

Bayswater Exploration & Production, LLC

Well Name: **Albrighton H-10HC**

Surface Location: Albrighton Pad Sec.10-T6N-R64W

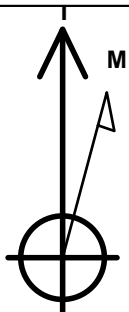
North American Datum 1983 , US State Plane 1983 , Colorado Northern Zone

Ground Elevation: 4807.0

+N/-S	+E/-W	Northing	Easting	Latitude	Longitude	Slot
0.0	0.0	1425197.51	3266588.51	40.496613	-104.541421	
RKB - 22.5' WELL @ 4829.5ft (RKB - 22.5')						

WELLBORE TARGET DETAILS

Name	TVD	+N/-S	+E/-W	Shape
SHL 1170'FSL, 1197'FWL	1.0	0.0	0.0	Point
BHL 470'FNL, 1680'FWL	7024.5	3662.5	527.2	Point
LPL 572'FSL, 1680'FWL	7024.5	-597.1	474.2	Point



Azimuths to True North
Magnetic North: 8.18°

Magnetic Field
Strength: 52761.0nT
Dip Angle: 67.02°
Date: 8/31/2015
Model: IGRF2010

Albrighton Pad Sec.10-T6N-R64W

Albrighton H-10HC

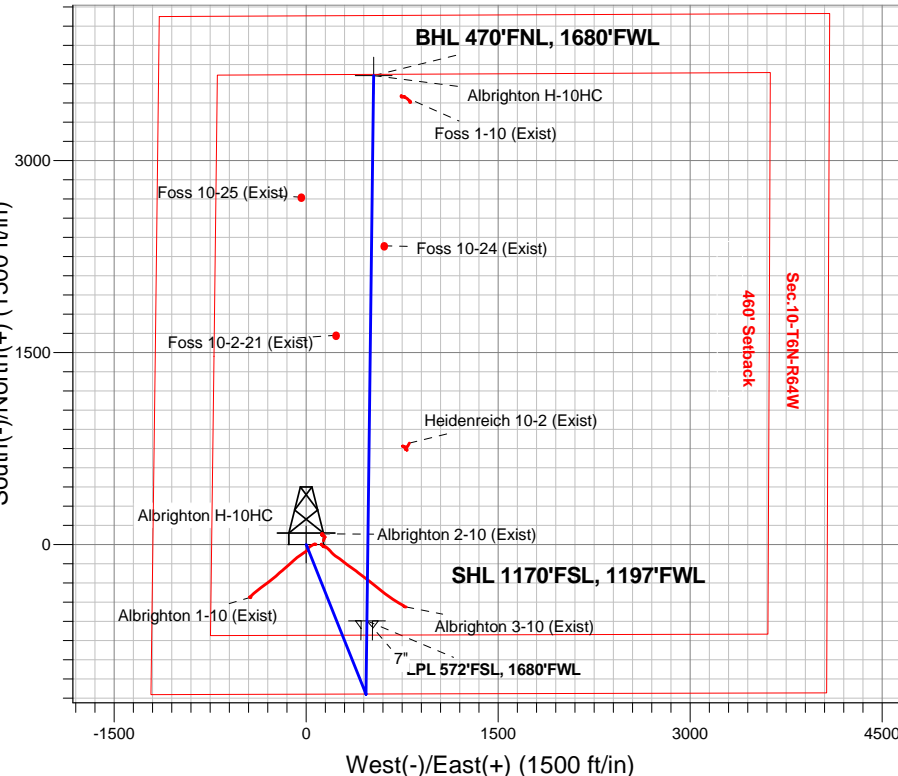
Plan #2 (8-27-15)

10:52, August 31 2015

ANNOTATIONS

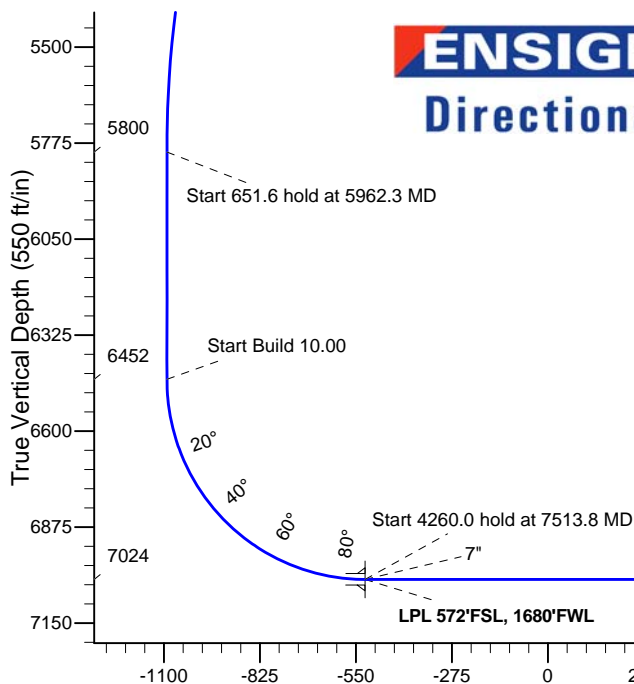
TVD	MD	Annotation
400.0	400.0	KOP - Start Build 1.50
5024.1	5176.5	Start Drop -2.00
5800.0	5962.3	Start 651.6 hold at 5962.3 MD
6451.6	6613.8	Start Build 10.00
7024.5	7513.8	Start 4260.0 hold at 7513.8 MD
7024.5	11773.8	TD at 11773.8

South(-)/North(+) (1500 ft/in)



West(-)/East(+) (1500 ft/in)

ENSIGN
Directional



SECTION DETAILS

Sec	MD	Inc	Azi	TVD	+N/-S	+E/-W	DLeg	TFace	VSec	Target
1	0.0	0.00	0.00	0.0	0.0	0.0	0.00	0.00	0.0	
2	400.0	0.00	0.00	400.0	0.0	0.0	0.00	0.00	0.0	
3	1447.6	15.71	158.24	1434.5	-132.6	52.9	1.50	158.24	-123.7	
4	5176.5	15.71	158.24	5024.1	-1070.6	427.4	0.00	0.00	-998.8	
5	5962.3	0.00	0.00	5800.0	-1170.0	467.1	2.00	180.00	-1091.5	
6	6613.8	0.00	0.00	6451.6	-1170.0	467.1	0.00	0.00	-1091.5	
7	7513.8	90.00	0.71	7024.5	-597.1	474.2	10.00	0.71	-523.5	
8	7513.8	90.00	0.71	7024.5	-597.1	474.2	0.00	0.00	-523.5	LPL 572'FSL, 1680'FWL
9	11773.8	90.00	0.71	7024.5	3662.5	527.1	0.00	0.00	3700.3	BHL 470'FNL, 1680'FWL

Vertical Section at 8.19° (550 ft/in)



Bayswater Exploration & Production, LLC

SEC.10-T6N-R64W

Albrighton Pad Sec.10-T6N-R64W

Albrighton H-10HC

Wellbore #1

Plan: Plan #2 (8-27-15)

Standard Planning Report

31 August, 2015



BAYSWATER
EXPLORATION & PRODUCTION, LLC

Database:	EDMNEW	Local Co-ordinate Reference:	Well Albrighton H-10HC
Company:	Bayswater Exploration & Production, LLC	TVD Reference:	WELL @ 4829.5ft (RKB - 22.5')
Project:	SEC.10-T6N-R64W	MD Reference:	WELL @ 4829.5ft (RKB - 22.5')
Site:	Albrighton Pad Sec.10-T6N-R64W	North Reference:	True
Well:	Albrighton H-10HC	Survey Calculation Method:	Minimum Curvature
Wellbore:	Wellbore #1		
Design:	Plan #2 (8-27-15)		

Project	SEC.10-T6N-R64W, Weld County, Colorado		
Map System:	US State Plane 1983	System Datum:	Mean Sea Level
Geo Datum:	North American Datum 1983		Using Well Reference Point
Map Zone:	Colorado Northern Zone		Using geodetic scale factor

Site		Albrighton Pad Sec.10-T6N-R64W				
Site Position:		Northing:	1,425,196.03ft	Latitude:	40.496612	
From:	Lat/Long	Easting:	3,266,483.40ft	Longitude:	-104.541799	
Position Uncertainty:		0.0 ft	Slot Radius:	"	Grid Convergence:	0.62 °

Well	Albrighton H-10HC					
Well Position	+N-S	0.3 ft	Northing:	1,425,197.51 ft	Latitude:	40.496613
	+E-W	105.1 ft	Easting:	3,266,588.51 ft	Longitude:	-104.541421
Position Uncertainty		0.0 ft	Wellhead Elevation:	ft	Ground Level:	4,807.0 ft

Wellbore	Wellbore #1				
Magnetics	Model Name	Sample Date	Declination (°)	Dip Angle (°)	Field Strength (nT)
	IGRF2010	8/31/2015	8.18	67.02	52,761

Design	Plan #2 (8-27-15)			
Audit Notes:				
Version:	Phase:	PROTOTYPE	Tie On Depth:	0.0
Vertical Section:	Depth From (TVD) (ft)	+N/-S (ft)	+E/-W (ft)	Direction (°)
	0.0	0.0	0.0	8.19

Plan Sections										
Measured Depth (ft)	Inclination (°)	Azimuth (°)	Vertical Depth (ft)	+N/-S (ft)	+E/-W (ft)	Dogleg Rate (°/100ft)	Build Rate (°/100ft)	Turn Rate (°/100ft)	TFO (°)	Target
0.0	0.00	0.00	0.0	0.0	0.0	0.00	0.00	0.00	0.00	
400.0	0.00	0.00	400.0	0.0	0.0	0.00	0.00	0.00	0.00	
1,447.6	15.71	158.24	1,434.5	-132.6	52.9	1.50	1.50	0.00	158.24	
5,176.5	15.71	158.24	5,024.1	-1,070.6	427.4	0.00	0.00	0.00	0.00	
5,962.3	0.00	0.00	5,800.0	-1,170.0	467.1	2.00	-2.00	0.00	180.00	
6,613.8	0.00	0.00	6,451.6	-1,170.0	467.1	0.00	0.00	0.00	0.00	
7,513.8	90.00	0.71	7,024.5	-597.1	474.2	10.00	10.00	0.00	0.71	
7,513.8	90.00	0.71	7,024.5	-597.1	474.2	0.00	0.00	0.00	0.00	LPL 572'FSL, 1680'
11,773.8	90.00	0.71	7,024.5	3,662.5	527.1	0.00	0.00	0.00	0.00	BHL 470'FNL, 1680'

Database:	EDMNEW	Local Co-ordinate Reference:	Well Albrighton H-10HC
Company:	Bayswater Exploration & Production, LLC	TVD Reference:	WELL @ 4829.5ft (RKB - 22.5')
Project:	SEC.10-T6N-R64W	MD Reference:	WELL @ 4829.5ft (RKB - 22.5')
Site:	Albrighton Pad Sec.10-T6N-R64W	North Reference:	True
Well:	Albrighton H-10HC	Survey Calculation Method:	Minimum Curvature
Wellbore:	Wellbore #1		
Design:	Plan #2 (8-27-15)		

Planned Survey									
Measured Depth (ft)	Inclination (°)	Azimuth (°)	Vertical Depth (ft)	+N/-S (ft)	+E/-W (ft)	Vertical Section (ft)	Dogleg Rate (°/100ft)	Build Rate (°/100ft)	Turn Rate (°/100ft)
0.0	0.00	0.00	0.0	0.0	0.0	0.0	0.00	0.00	0.00
1.0	0.00	0.00	1.0	0.0	0.0	0.0	0.00	0.00	0.00
SHL 1170'FSL, 1197'FWL									
100.0	0.00	0.00	100.0	0.0	0.0	0.0	0.00	0.00	0.00
200.0	0.00	0.00	200.0	0.0	0.0	0.0	0.00	0.00	0.00
300.0	0.00	0.00	300.0	0.0	0.0	0.0	0.00	0.00	0.00
400.0	0.00	0.00	400.0	0.0	0.0	0.0	0.00	0.00	0.00
KOP - Start Build 1.50									
500.0	1.50	158.24	500.0	-1.2	0.5	-1.1	1.50	1.50	0.00
600.0	3.00	158.24	599.9	-4.9	1.9	-4.5	1.50	1.50	0.00
700.0	4.50	158.24	699.7	-10.9	4.4	-10.2	1.50	1.50	0.00
800.0	6.00	158.24	799.3	-19.4	7.8	-18.1	1.50	1.50	0.00
900.0	7.50	158.24	898.6	-30.3	12.1	-28.3	1.50	1.50	0.00
1,000.0	9.00	158.24	997.5	-43.7	17.4	-40.7	1.50	1.50	0.00
1,100.0	10.50	158.24	1,096.1	-59.4	23.7	-55.4	1.50	1.50	0.00
1,200.0	12.00	158.24	1,194.2	-77.5	30.9	-72.3	1.50	1.50	0.00
1,300.0	13.50	158.24	1,291.7	-98.0	39.1	-91.4	1.50	1.50	0.00
1,400.0	15.00	158.24	1,388.6	-120.9	48.3	-112.8	1.50	1.50	0.00
1,447.6	15.71	158.24	1,434.5	-132.6	52.9	-123.7	1.50	1.50	0.00
1,500.0	15.71	158.24	1,485.0	-145.8	58.2	-136.0	0.00	0.00	0.00
1,600.0	15.71	158.24	1,581.2	-170.9	68.2	-159.5	0.00	0.00	0.00
1,700.0	15.71	158.24	1,677.5	-196.1	78.3	-182.9	0.00	0.00	0.00
1,800.0	15.71	158.24	1,773.7	-221.2	88.3	-206.4	0.00	0.00	0.00
1,900.0	15.71	158.24	1,870.0	-246.4	98.4	-229.9	0.00	0.00	0.00
2,000.0	15.71	158.24	1,966.3	-271.5	108.4	-253.3	0.00	0.00	0.00
2,100.0	15.71	158.24	2,062.5	-296.7	118.4	-276.8	0.00	0.00	0.00
2,200.0	15.71	158.24	2,158.8	-321.8	128.5	-300.3	0.00	0.00	0.00
2,300.0	15.71	158.24	2,255.1	-347.0	138.5	-323.7	0.00	0.00	0.00
2,400.0	15.71	158.24	2,351.3	-372.1	148.6	-347.2	0.00	0.00	0.00
2,500.0	15.71	158.24	2,447.6	-397.3	158.6	-370.7	0.00	0.00	0.00
2,600.0	15.71	158.24	2,543.8	-422.5	168.7	-394.1	0.00	0.00	0.00
2,700.0	15.71	158.24	2,640.1	-447.6	178.7	-417.6	0.00	0.00	0.00
2,800.0	15.71	158.24	2,736.4	-472.8	188.7	-441.1	0.00	0.00	0.00
2,900.0	15.71	158.24	2,832.6	-497.9	198.8	-464.5	0.00	0.00	0.00
3,000.0	15.71	158.24	2,928.9	-523.1	208.8	-488.0	0.00	0.00	0.00
3,100.0	15.71	158.24	3,025.2	-548.2	218.9	-511.5	0.00	0.00	0.00
3,200.0	15.71	158.24	3,121.4	-573.4	228.9	-534.9	0.00	0.00	0.00
3,300.0	15.71	158.24	3,217.7	-598.5	239.0	-558.4	0.00	0.00	0.00
3,400.0	15.71	158.24	3,313.9	-623.7	249.0	-581.9	0.00	0.00	0.00
3,500.0	15.71	158.24	3,410.2	-648.8	259.0	-605.3	0.00	0.00	0.00
3,600.0	15.71	158.24	3,506.5	-674.0	269.1	-628.8	0.00	0.00	0.00
3,700.0	15.71	158.24	3,602.7	-699.1	279.1	-652.3	0.00	0.00	0.00
3,800.0	15.71	158.24	3,699.0	-724.3	289.2	-675.7	0.00	0.00	0.00
3,900.0	15.71	158.24	3,795.3	-749.5	299.2	-699.2	0.00	0.00	0.00
4,000.0	15.71	158.24	3,891.5	-774.6	309.2	-722.7	0.00	0.00	0.00
4,100.0	15.71	158.24	3,987.8	-799.8	319.3	-746.1	0.00	0.00	0.00
4,200.0	15.71	158.24	4,084.0	-824.9	329.3	-769.6	0.00	0.00	0.00
4,300.0	15.71	158.24	4,180.3	-850.1	339.4	-793.1	0.00	0.00	0.00
4,400.0	15.71	158.24	4,276.6	-875.2	349.4	-816.5	0.00	0.00	0.00
4,500.0	15.71	158.24	4,372.8	-900.4	359.5	-840.0	0.00	0.00	0.00
4,600.0	15.71	158.24	4,469.1	-925.5	369.5	-863.5	0.00	0.00	0.00
4,700.0	15.71	158.24	4,565.4	-950.7	379.5	-886.9	0.00	0.00	0.00
4,800.0	15.71	158.24	4,661.6	-975.8	389.6	-910.4	0.00	0.00	0.00
4,900.0	15.71	158.24	4,757.9	-1,001.0	399.6	-933.9	0.00	0.00	0.00

Database:	EDMNEW	Local Co-ordinate Reference:	Well Albrighton H-10HC
Company:	Bayswater Exploration & Production, LLC	TVD Reference:	WELL @ 4829.5ft (RKB - 22.5')
Project:	SEC.10-T6N-R64W	MD Reference:	WELL @ 4829.5ft (RKB - 22.5')
Site:	Albrighton Pad Sec.10-T6N-R64W	North Reference:	True
Well:	Albrighton H-10HC	Survey Calculation Method:	Minimum Curvature
Wellbore:	Wellbore #1		
Design:	Plan #2 (8-27-15)		

Planned Survey

Measured Depth (ft)	Inclination (°)	Azimuth (°)	Vertical Depth (ft)	+N/-S (ft)	+E/-W (ft)	Vertical Section (ft)	Dogleg Rate (°/100ft)	Build Rate (°/100ft)	Turn Rate (°/100ft)
5,000.0	15.71	158.24	4,854.1	-1,026.1	409.7	-957.3	0.00	0.00	0.00
5,100.0	15.71	158.24	4,950.4	-1,051.3	419.7	-980.8	0.00	0.00	0.00
5,176.5	15.71	158.24	5,024.0	-1,070.5	427.4	-998.7	0.00	0.00	0.00
Start Drop -2.00									
5,200.0	15.25	158.24	5,046.7	-1,076.4	429.7	-1,004.2	2.00	-2.00	0.00
5,300.0	13.25	158.24	5,143.6	-1,099.2	438.8	-1,025.5	2.00	-2.00	0.00
5,400.0	11.25	158.24	5,241.3	-1,118.9	446.7	-1,043.9	2.00	-2.00	0.00
5,500.0	9.25	158.24	5,339.7	-1,135.4	453.3	-1,059.3	2.00	-2.00	0.00
5,600.0	7.25	158.24	5,438.7	-1,148.8	458.6	-1,071.7	2.00	-2.00	0.00
5,700.0	5.25	158.24	5,538.1	-1,158.9	462.7	-1,081.1	2.00	-2.00	0.00
5,800.0	3.25	158.24	5,637.8	-1,165.7	465.4	-1,087.5	2.00	-2.00	0.00
5,900.0	1.25	158.24	5,737.7	-1,169.4	466.8	-1,090.9	2.00	-2.00	0.00
5,962.3	0.00	0.00	5,800.0	-1,170.0	467.1	-1,091.5	2.00	-2.00	0.00
Start 651.6 hold at 5962.3 MD									
6,000.0	0.00	0.00	5,837.7	-1,170.0	467.1	-1,091.5	0.00	0.00	0.00
6,100.0	0.00	0.00	5,937.7	-1,170.0	467.1	-1,091.5	0.00	0.00	0.00
6,200.0	0.00	0.00	6,037.7	-1,170.0	467.1	-1,091.5	0.00	0.00	0.00
6,300.0	0.00	0.00	6,137.7	-1,170.0	467.1	-1,091.5	0.00	0.00	0.00
6,400.0	0.00	0.00	6,237.7	-1,170.0	467.1	-1,091.5	0.00	0.00	0.00
6,500.0	0.00	0.00	6,337.7	-1,170.0	467.1	-1,091.5	0.00	0.00	0.00
6,600.0	0.00	0.00	6,437.7	-1,170.0	467.1	-1,091.5	0.00	0.00	0.00
6,613.8	0.00	0.00	6,451.5	-1,170.0	467.1	-1,091.5	0.00	0.00	0.00
Start Build 10.00									
6,700.0	8.62	0.71	6,537.4	-1,163.5	467.2	-1,085.1	10.00	10.00	0.00
6,800.0	18.62	0.71	6,634.5	-1,140.0	467.5	-1,061.8	10.00	10.00	0.00
6,900.0	28.62	0.71	6,726.0	-1,100.0	468.0	-1,022.1	10.00	10.00	0.00
7,000.0	38.62	0.71	6,809.1	-1,044.7	468.7	-967.3	10.00	10.00	0.00
7,100.0	48.62	0.71	6,881.4	-975.8	469.5	-899.0	10.00	10.00	0.00
7,200.0	58.62	0.71	6,940.7	-895.4	470.5	-819.3	10.00	10.00	0.00
7,300.0	68.62	0.71	6,985.1	-806.0	471.6	-730.6	10.00	10.00	0.00
7,400.0	78.62	0.71	7,013.2	-710.2	472.8	-635.6	10.00	10.00	0.00
7,500.0	88.62	0.71	7,024.3	-610.9	474.0	-537.2	10.00	10.00	0.00
7,513.8	90.00	0.71	7,024.5	-597.1	474.2	-523.5	9.99	9.99	0.00
Start 4260.0 hold at 7513.8 MD - 7" - LPL 572'FSL, 1680'FWL									
7,600.0	90.00	0.71	7,024.5	-510.9	475.3	-438.0	0.00	0.00	0.00
7,700.0	90.00	0.71	7,024.5	-410.9	476.5	-338.9	0.00	0.00	0.00
7,800.0	90.00	0.71	7,024.5	-310.9	477.8	-239.7	0.00	0.00	0.00
7,900.0	90.00	0.71	7,024.5	-210.9	479.0	-140.6	0.00	0.00	0.00
8,000.0	90.00	0.71	7,024.5	-110.9	480.3	-41.4	0.00	0.00	0.00
8,100.0	90.00	0.71	7,024.5	-11.0	481.5	57.7	0.00	0.00	0.00
8,200.0	90.00	0.71	7,024.5	89.0	482.7	156.9	0.00	0.00	0.00
8,300.0	90.00	0.71	7,024.5	189.0	484.0	256.0	0.00	0.00	0.00
8,400.0	90.00	0.71	7,024.5	289.0	485.2	355.2	0.00	0.00	0.00
8,500.0	90.00	0.71	7,024.5	389.0	486.5	454.3	0.00	0.00	0.00
8,600.0	90.00	0.71	7,024.5	489.0	487.7	553.5	0.00	0.00	0.00
8,700.0	90.00	0.71	7,024.5	589.0	488.9	652.6	0.00	0.00	0.00
8,800.0	90.00	0.71	7,024.5	689.0	490.2	751.8	0.00	0.00	0.00
8,900.0	90.00	0.71	7,024.5	789.0	491.4	850.9	0.00	0.00	0.00
9,000.0	90.00	0.71	7,024.5	889.0	492.7	950.1	0.00	0.00	0.00
9,100.0	90.00	0.71	7,024.5	989.0	493.9	1,049.2	0.00	0.00	0.00
9,200.0	90.00	0.71	7,024.5	1,089.0	495.2	1,148.4	0.00	0.00	0.00
9,300.0	90.00	0.71	7,024.5	1,189.0	496.4	1,247.5	0.00	0.00	0.00
9,400.0	90.00	0.71	7,024.5	1,288.9	497.6	1,346.7	0.00	0.00	0.00

Database:	EDMNEW	Local Co-ordinate Reference:	Well Albrighton H-10HC
Company:	Bayswater Exploration & Production, LLC	TVD Reference:	WELL @ 4829.5ft (RKB - 22.5')
Project:	SEC.10-T6N-R64W	MD Reference:	WELL @ 4829.5ft (RKB - 22.5')
Site:	Albrighton Pad Sec.10-T6N-R64W	North Reference:	True
Well:	Albrighton H-10HC	Survey Calculation Method:	Minimum Curvature
Wellbore:	Wellbore #1		
Design:	Plan #2 (8-27-15)		

Planned Survey										
Measured Depth (ft)	Inclination (°)	Azimuth (°)	Vertical Depth (ft)	+N/-S (ft)	+E/-W (ft)	Vertical Section (ft)	Dogleg Rate (°/100ft)	Build Rate (°/100ft)	Turn Rate (°/100ft)	
9,500.0	90.00	0.71	7,024.5	1,388.9	498.9	1,445.8	0.00	0.00	0.00	
9,600.0	90.00	0.71	7,024.5	1,488.9	500.1	1,545.0	0.00	0.00	0.00	
9,700.0	90.00	0.71	7,024.5	1,588.9	501.4	1,644.1	0.00	0.00	0.00	
9,800.0	90.00	0.71	7,024.5	1,688.9	502.6	1,743.3	0.00	0.00	0.00	
9,900.0	90.00	0.71	7,024.5	1,788.9	503.8	1,842.4	0.00	0.00	0.00	
10,000.0	90.00	0.71	7,024.5	1,888.9	505.1	1,941.6	0.00	0.00	0.00	
10,100.0	90.00	0.71	7,024.5	1,988.9	506.3	2,040.7	0.00	0.00	0.00	
10,200.0	90.00	0.71	7,024.5	2,088.9	507.6	2,139.9	0.00	0.00	0.00	
10,300.0	90.00	0.71	7,024.5	2,188.9	508.8	2,239.0	0.00	0.00	0.00	
10,400.0	90.00	0.71	7,024.5	2,288.9	510.1	2,338.2	0.00	0.00	0.00	
10,500.0	90.00	0.71	7,024.5	2,388.9	511.3	2,437.3	0.00	0.00	0.00	
10,600.0	90.00	0.71	7,024.5	2,488.9	512.5	2,536.5	0.00	0.00	0.00	
10,700.0	90.00	0.71	7,024.5	2,588.8	513.8	2,635.6	0.00	0.00	0.00	
10,800.0	90.00	0.71	7,024.5	2,688.8	515.0	2,734.8	0.00	0.00	0.00	
10,900.0	90.00	0.71	7,024.5	2,788.8	516.3	2,833.9	0.00	0.00	0.00	
11,000.0	90.00	0.71	7,024.5	2,888.8	517.5	2,933.1	0.00	0.00	0.00	
11,100.0	90.00	0.71	7,024.5	2,988.8	518.7	3,032.2	0.00	0.00	0.00	
11,200.0	90.00	0.71	7,024.5	3,088.8	520.0	3,131.4	0.00	0.00	0.00	
11,300.0	90.00	0.71	7,024.5	3,188.8	521.2	3,230.5	0.00	0.00	0.00	
11,400.0	90.00	0.71	7,024.5	3,288.8	522.5	3,329.7	0.00	0.00	0.00	
11,500.0	90.00	0.71	7,024.5	3,388.8	523.7	3,428.8	0.00	0.00	0.00	
11,600.0	90.00	0.71	7,024.5	3,488.8	524.9	3,528.0	0.00	0.00	0.00	
11,700.0	90.00	0.71	7,024.5	3,588.8	526.2	3,627.1	0.00	0.00	0.00	
11,773.8	90.00	0.71	7,024.5	3,662.5	527.1	3,700.3	0.00	0.00	0.00	
BHL 470'FNL, 1680'FWL										

Targets										
Target Name	Dip Angle (°)	Dip Dir. (°)	TVD (ft)	+N/-S (ft)	+E/-W (ft)	Northing (ft)	Easting (ft)	Latitude	Longitude	
SHL 1170'FSL, 1197'f - hit/miss target - Shape - Point	0.00	0.00	1.0	0.0	0.0	1,425,197.53	3,266,588.51	40.496613	-104.541421	
BHL 470'FNL, 1680'F - plan misses target center by 0.1ft at 11773.8ft MD (7024.5 TVD, 3662.5 N, 527.1 E) - Point	0.00	0.00	7,024.5	3,662.5	527.2	1,428,865.38	3,267,076.12	40.506666	-104.539525	
LPL 572'FSL, 1680'Fv - plan hits target center - Point	0.00	0.00	7,024.5	-597.1	474.2	1,424,605.59	3,267,069.14	40.494974	-104.539716	

Casing Points						
Measured Depth (ft)	Vertical Depth (ft)	Name	Casing Diameter (")	Hole Diameter (")		
7,513.8	7,024.5	7"	7	7-1/2		

Database:	EDMNEW	Local Co-ordinate Reference:	Well Albrighton H-10HC
Company:	Bayswater Exploration & Production, LLC	TVD Reference:	WELL @ 4829.5ft (RKB - 22.5')
Project:	SEC.10-T6N-R64W	MD Reference:	WELL @ 4829.5ft (RKB - 22.5')
Site:	Albrighton Pad Sec.10-T6N-R64W	North Reference:	True
Well:	Albrighton H-10HC	Survey Calculation Method:	Minimum Curvature
Wellbore:	Wellbore #1		
Design:	Plan #2 (8-27-15)		

Plan Annotations				
Measured Depth (ft)	Vertical Depth (ft)	Local Coordinates		Comment
		+N/-S (ft)	+E/-W (ft)	
400.0	400.0	0.0	0.0	KOP - Start Build 1.50
5,176.5	5,024.1	-132.6	52.9	Start Drop -2.00
5,962.3	5,800.0	-1,070.6	427.4	Start 651.6 hold at 5962.3 MD
6,613.8	6,451.6	-1,170.0	467.1	Start Build 10.00
7,513.8	7,024.5	-1,170.0	467.1	Start 4260.0 hold at 7513.8 MD
11,773.8	7,024.5	-597.1	474.2	TD at 11773.8