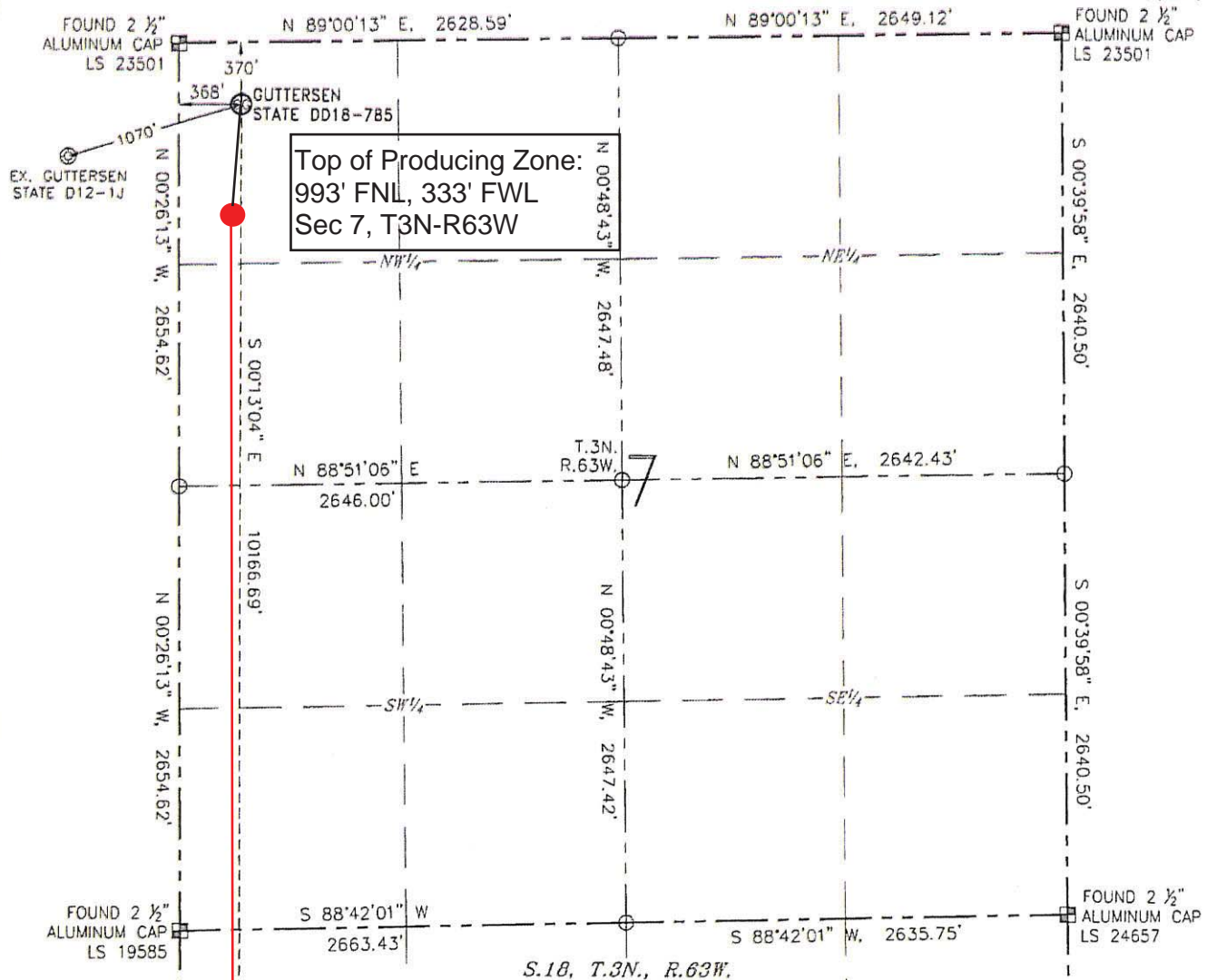


# WELL LOCATION CERTIFICATE

GUTTERSEN STATE DD18-785  
(SHEET 1 OF 2)

SECTION: 7  
TOWNSHIP: 3N  
RANGE: 63W



## NOTES:

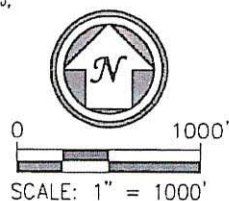
1. BEARINGS ARE GRID BEARINGS OF THE COLORADO STATE PLANE COORDINATE SYSTEM, NORTH ZONE, NAD 83. THE LINEAL DIMENSIONS SHOWN HEREON ARE BASED UPON THE "U.S. SURVEY FOOT".
2. GROUND ELEVATIONS ARE BASED UPON NGS OPUS SOLUTION NAVD 88 DATUM COMPUTED USING GEOID09.
3. IMPROVEMENTS: SEE LOCATION DRAWING FOR ALL VISIBLE IMPROVEMENTS WITHIN 500' OF THE DISTURBED AREA.
4. SURFACE USE: RANGELAND.
5. INSTRUMENT OPERATOR: ANTONIO SMITH.
6. THE NEAREST EXISTING WELL: GUTTERSEN STATE D12-1J, 1070' SW.

## NEAREST CULTURAL ITEMS:

BUILDING:	5280'+
BUILDING UNIT:	5280'+
HIGH OCCUPANCY BUILDING UNIT:	5280'+
DESIGNATED OUTSIDE ACTIVITY AREA:	5280'+
PUBLIC ROAD (CR 57):	5280'+
ABOVEGROUND UTILITY:	5280'+
RAILROAD:	5280'+
PROPERTY LINE:	368' W

IN ACCORDANCE WITH A REQUEST FROM DERRICK WORDEN WITH NOBLE ENERGY INC., R&R ENGINEERS-SURVEYORS, INC. HAS DETERMINED THE SURFACE HOLE LOCATION OF THE GUTTERSEN STATE DD18-785 WELL TO BE 370' FROM THE NORTH LINE AND 368' FROM THE WEST LINE AS MEASURED AT RIGHT ANGLES FROM THE SECTION LINES OF SECTION 7, TOWNSHIP 3 NORTH, RANGE 63 WEST, AND THE BOTTOM HOLE LOCATION TO BE 75' FROM THE SOUTH LINE AND 330' FROM THE WEST LINE AS MEASURED AT RIGHT ANGLES FROM THE SECTION LINES OF SECTION 18, TOWNSHIP 3 NORTH, RANGE 63 WEST OF THE 6TH PRINCIPAL MERIDIAN, WELD COUNTY, COLORADO.

I HEREBY CERTIFY THAT THIS WELL LOCATION CERTIFICATE WAS PREPARED BY ME, OR UNDER MY DIRECT SUPERVISION, THAT THE FIELD WORK WAS COMPLETED ON 02/03/14, FOR AND ON BEHALF OF NOBLE ENERGY INC., THAT IT IS NOT A LAND SURVEY PLAT OR AN IMPROVEMENT SURVEY PLAT, AND THAT IT IS NOT TO BE RELIED UPON FOR ESTABLISHMENT OF FENCES, BUILDINGS, OR OTHER FUTURE IMPROVEMENT LINES.



## SURFACE HOLE LOCATION

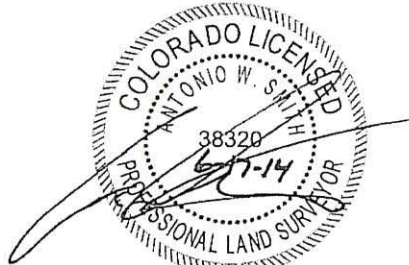
LATITUDE: N 40.24613'  
LONGITUDE: W 104.48878'  
PDOP: 1.6  
ELEVATION: 4805'  
1/4-1/4: NW1/4NW1/4

## BOTTOM HOLE LOCATION

LATITUDE: N 40.21823'  
LONGITUDE: W 104.48905'

## LEGEND

- ⊙ PROPOSED WELL
- ⊙ EXISTING WELL
- ⊙ BOTTOM HOLE
- ⊙ FOUND MONUMENT
- CALCULATED POSITION

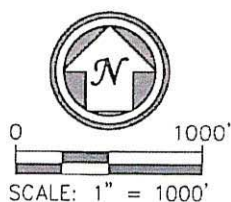
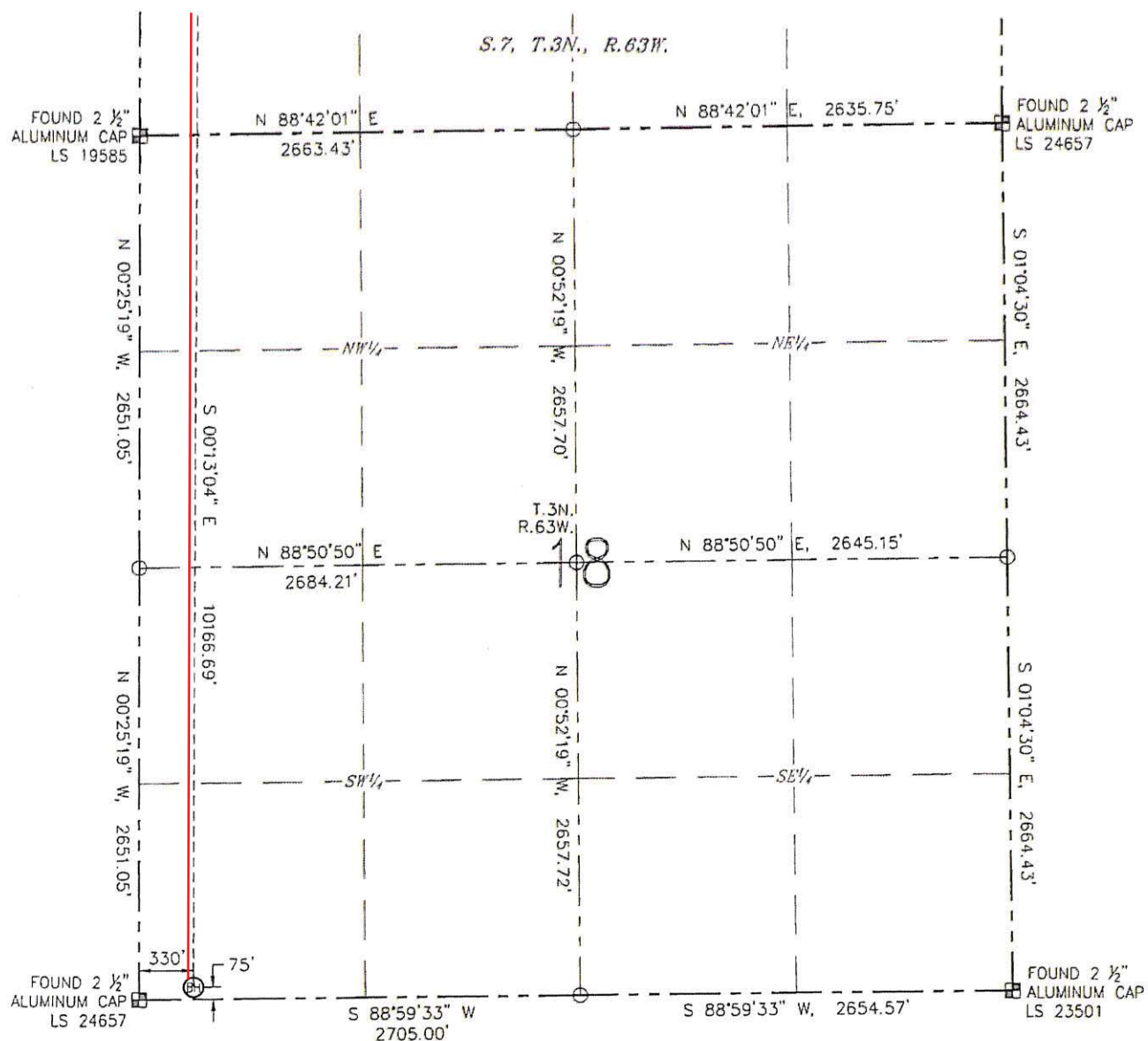


ANTONIO W. SMITH, PLS 38320  
FOR AND ON BEHALF OF R&R ENGINEERS-SURVEYORS, INC. DATE: 06/16/2014  
JOB NO.: NE14301.1

# WELL LOCATION CERTIFICATE

GUTTERSEN STATE DD18-785  
(SHEET 2 OF 2)

SECTION: 7  
TOWNSHIP: 3N  
RANGE: 63W



### LEGEND

- ⊗ PROPOSED WELL  
 ⊗ EXISTING WELL  
 ⊗ BOTTOM HOLE  
 ⊞ FOUND MONUMENT  
 ○ CALCULATED POSITION



ANTONIO W. SMITH, PLS 38320  
FOR AND ON BEHALF OF R&R DATE: 06/16/2014  
ENGINEERS-SURVEYORS, INC. JOB NO.: NE14301.1