

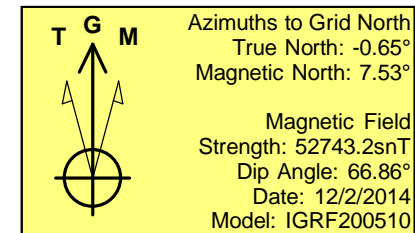
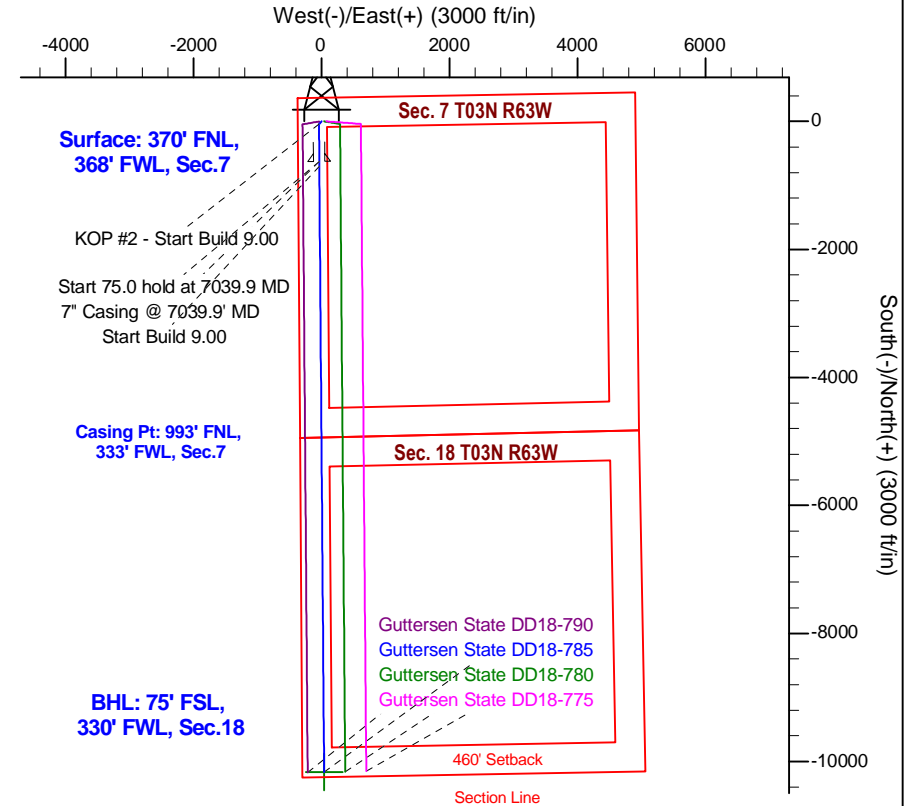
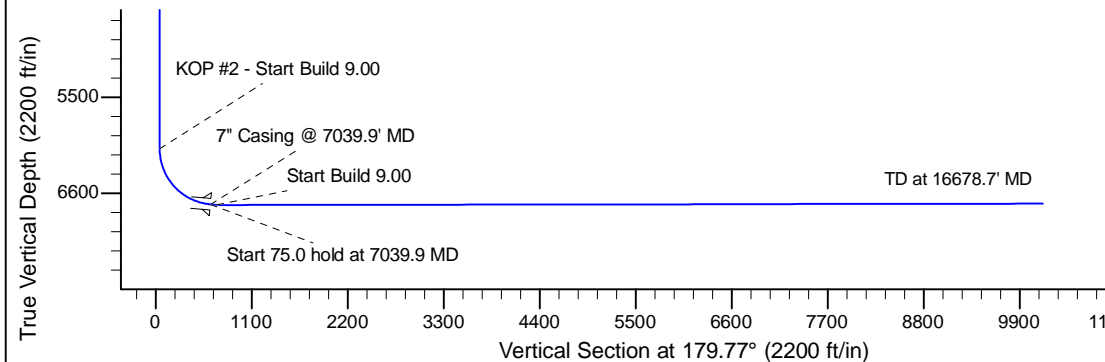
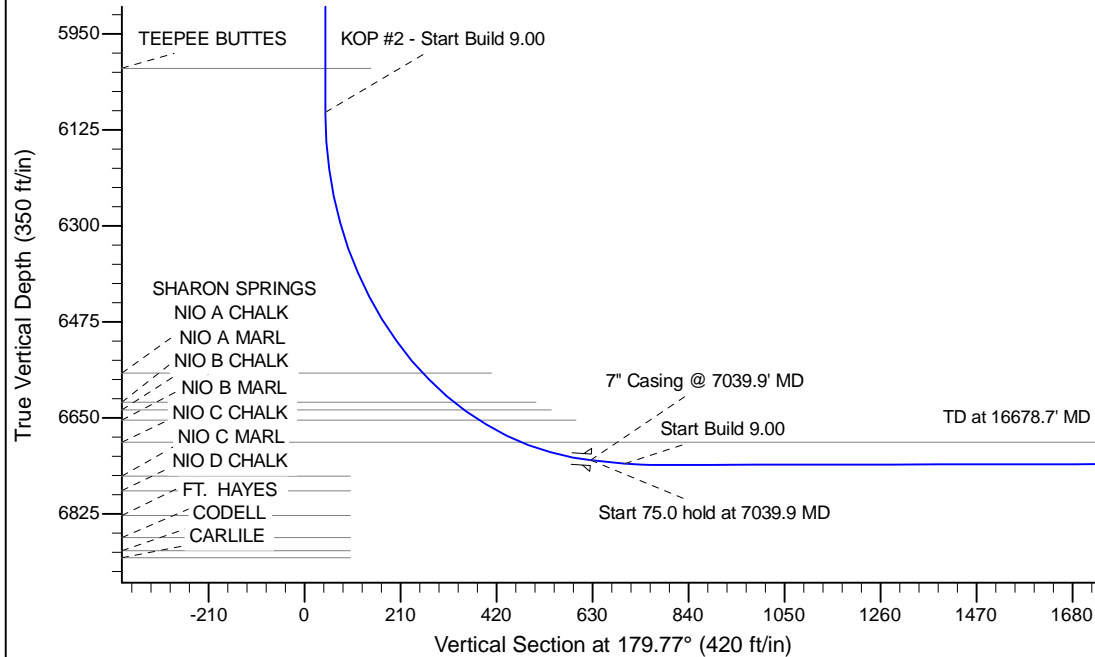
Project: Wattenberg Field  
Site: DD (Sec.7-T03N-R63W) Weld County, CO  
Well: Gutttersen State DD18-785  
Wellbore: Original Drilling  
Design: APD - Rev 0

# Northern Region Drilling - Working

Geodetic System: US State Plane 1983  
Datum: North American Datum 1983  
Ellipsoid: GRS 1980  
Zone: Colorado Northern Zone  
System Datum: Mean Sea Level

## SECTION DETAILS

Sec	MD	Inc	Azi	TVD	+N/-S	+E/-W	Dleg	TFace	VSect	Target
1	0.0	0.00	0.00	0.0	0.0	0.0	0.00	0.00	0.0	
2	2200.0	0.00	0.00	2200.0	0.0	0.0	0.00	0.00	0.0	
3	2591.0	7.82	221.63	2589.8	-19.9	-17.7	2.00	221.63	19.8	
4	2641.9	7.82	221.63	2640.2	-25.1	-22.3	0.00	0.00	25.0	
5	3032.9	0.00	0.00	3030.0	-45.0	-40.0	2.00	180.00	44.8	
6	6095.5	0.00	0.00	6092.6	-45.0	-40.0	0.00	0.00	44.8	
7	7039.9	85.00	179.54	6726.8	-626.1	-35.4	9.00	179.54	626.0	
8	7114.9	85.00	179.54	6733.3	-700.8	-34.8	0.00	0.00	700.7	
9	7171.6	90.10	179.54	6735.7	-757.4	-34.3	9.00	0.00	757.3	
10	16578.7	90.10	179.54	6719.3	-10164.2	40.5	0.00	0.00	10164.3	Gutttersen State DD18-785 BHL 75'FSL, 330'FWL



WELL DETAILS: Gutttersen State DD18-785					
Ground Level: 4805.0					
	Northing	Easting	Latitude	Longitude	
0.0	0.0	1334116.37	3282268.34	40.246130	-104.488780
Plan: APD - Rev 0 (Gutttersen State DD18-785/Original Drilling)					
Created By: Shailey Jewell			Date: 13:47, December 02 2014		
OK to submit with 2A as per Noble Drilling 12/2/2014 3:43					