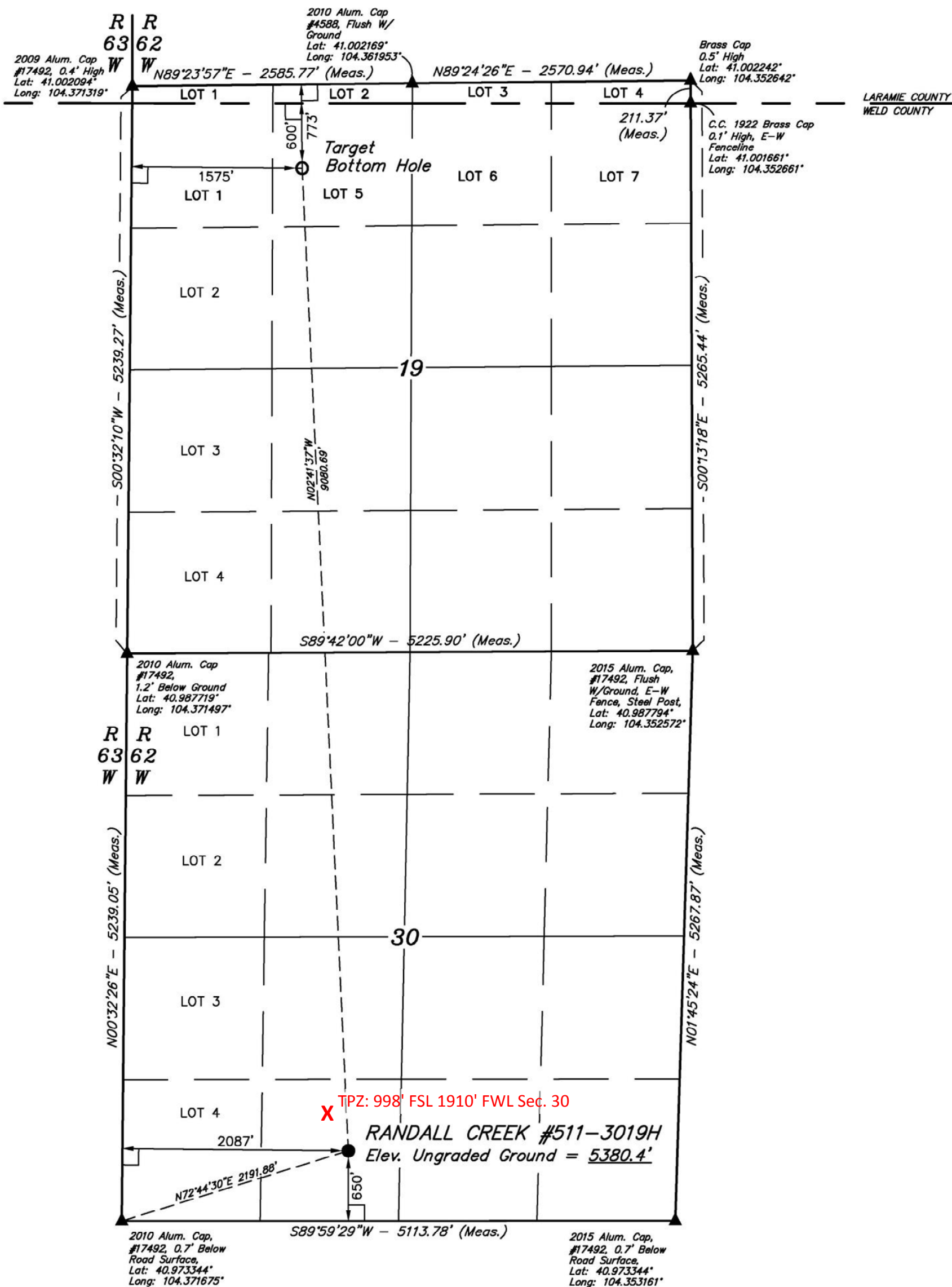


L = 90° SYMBOL
 ● = PROPOSED WELLHEAD.
 ○ = TARGET BOTTOM HOLE.
 ▲ = SECTION CORNERS
 LOCATED.

WYOMING
COLORADO



NAD 83 (TARGET BOTTOM HOLE)	NAD 83 (SURFACE LOCATION)
LATITUDE = 41°00'00.07" (41.000019)	LATITUDE = 40°58'30.47" (40.975131)
LONGITUDE = 104°21'56.30" (104.365639)	LONGITUDE = 104°21'50.75" (104.364097)
NAD 27 (TARGET BOTTOM HOLE)	NAD 27 (SURFACE LOCATION)
LATITUDE = 41°00'00.13" (41.000036)	LATITUDE = 40°58'30.53" (40.975147)
LONGITUDE = 104°21'54.46" (104.365128)	LONGITUDE = 104°21'48.91" (104.363586)
STATE PLANE NAD 83 (COLORADO NORTH)	STATE PLANE NAD 83 (COLORADO NORTH)
N: 1609166.50 E: 3313126.07	N: 1600103.96 E: 3313667.87
STATE PLANE NAD 27 (COLORADO NORTH)	STATE PLANE NAD 27 (COLORADO NORTH)
N: 609163.90 E: 2313275.58	N: 600101.51 E: 2313817.32

CERTIFICATE

THIS IS TO CERTIFY THAT THE ABOVE THAT WAS PREPARED FROM FIELD NOTES OF ACTUAL SURVEYS MADE BY ME OR UNDER MY SUPERVISION AND THAT THE SAME ARE TRUE AND CORRECT TO THE BEST OF MY KNOWLEDGE AND BELIEF.

REGISTERED LAND SURVEYOR
REGISTRATION NO. 28285
STATE OF COLORADO 05-29-15

BASIS OF BEARINGS

BASIS OF ELEVATION

BASIS OF ELEVATION
SPOT ELEVATION LOCATED AT THE NORTHEAST CORNER OF SECTION 1, T11N, R63W, 6th P.M. TAKEN FROM THE HEREFORD, QUADRANGLE, COLORADO, WELD COUNTY, 7.5 MINUTE QUAD (TOPOGRAPHIC MAP) PUBLISHED BY THE UNITED STATES DEPARTMENT OF THE INTERIOR, GEOLOGICAL SURVEY. SAID ELEVATION IS MARKED AS BEING 5352 FEET.

EOG RESOURCES, INC.

RANDALL CREEK #511-3019H
SE 1/4 SW 1/4, SECTION 30, T12N, R62W, 6th P.M.
WELD COUNTY, COLORADO

SURVEYED BY: JARED CHRISTOPHER, D.W.		DATE: 05-6-15
DRAWN BY: H.W.		DATE DRAWN: 05-14-15
SCALE: 1" = 1000'		REVISED: 00-00-00

WELL LOCATION PLAT



UELS, LLC
Corporate Office * 85 South 200 East
Vernal, UT 84078 * (435) 789-1017

