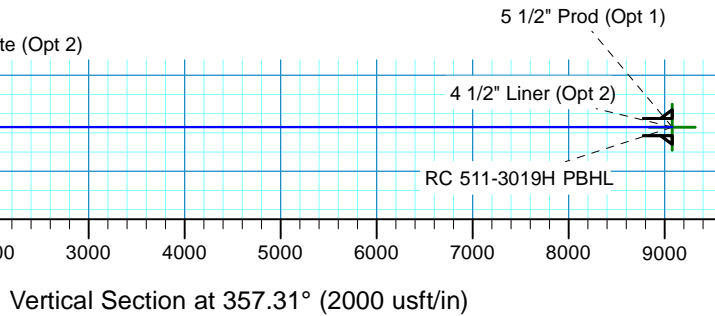
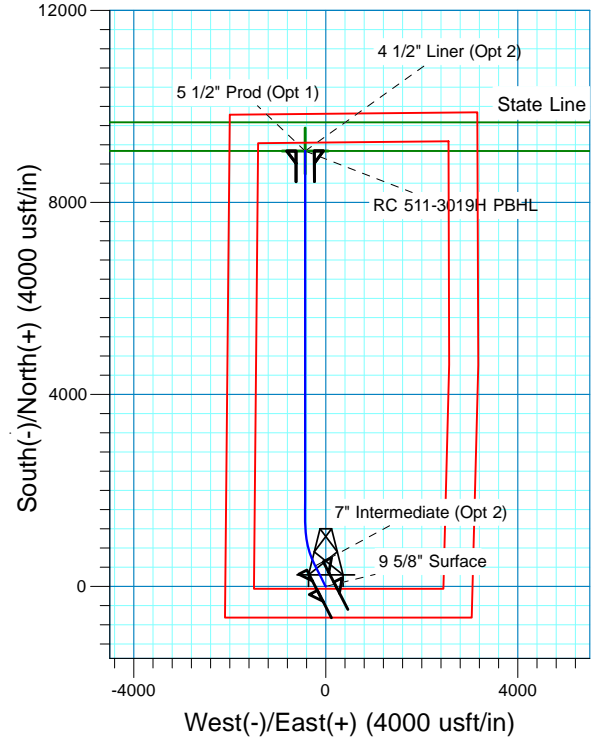
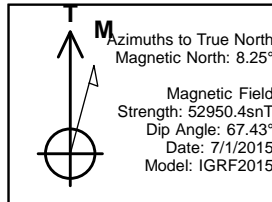
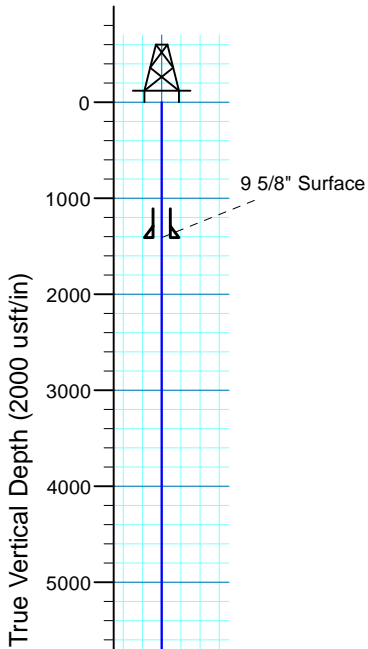




Randall Creek 511-3019H
 Section 30-T12N-R62W
 Weld County, CO

Surface Location				
NAD 1927 (NADCON CONUS) Colorado North 501				
Ground Elevation: 5380.0 RKB @ 5405.0usft (KB GL+25')				
Northing	Easting	Latitude	Longitude	
600101.51	2313817.32	40° 58' 30.526 N	104° 21' 48.913 W	

Project: DJ - Hereford Ranch
 Site: Randall Creek R30 SESW Pad
 Well: Randall Creek 511-3019H
 Plan: APD Plan (Plat Cert 5/29/15)



SECTION DETAILS

Sec	MD	Inc	Azi	TVD	+N/-S	+E/-W	Dleg	TFace	V Sect	Target
1	0.0	0.00	0.00	0.0	0.0	0.0	0.00	0.00	0.0	
2	7064.5	0.00	0.00	7064.5	0.0	0.0	0.00	0.00	0.0	
3	7814.5	90.00	333.00	7542.0	425.4	-216.8	12.00	333.00	435.1	
4	8714.3	90.00	360.00	7542.0	1292.3	-424.9	3.00	90.00	1310.8	RC 511-3019H PBHL
5	16490.6	90.00	360.00	7542.0	9068.6	-425.6	0.00	0.00	9078.6	RC 511-3019H PBHL

TARGET DETAILS

Name	TVD	+N/-S	+E/-W	Northing	Easting	Latitude	Longitude	Shape Point
RC 511-3019H PBHL	7542.0	9068.6	-425.6	609163.90	2313275.58	41° 0' 0.127 N 104° 21' 54.462 W		

Denver Division- Colorado

**DJ - Hereford Ranch
Randall Creek R30 SESW Pad
Randall Creek 511-3019H**

OH

Plan: APD Plan (Plat Cert 5/29/15)

Standard Planning Report

01 July, 2015

EOG Resources, Inc.

Planning Report

Database:	EDM_DENVER	Local Co-ordinate Reference:	Well Randall Creek 511-3019H
Company:	Denver Division- Colorado	TVD Reference:	RKB @ 5405.0usft (KB GL+25')
Project:	DJ - Hereford Ranch	MD Reference:	RKB @ 5405.0usft (KB GL+25')
Site:	Randall Creek R30 SESW Pad	North Reference:	True
Well:	Randall Creek 511-3019H	Survey Calculation Method:	Minimum Curvature
Wellbore:	OH		
Design:	APD Plan (Plat Cert 5/29/15)		

Project	DJ - Hereford Ranch, Weld County		
Map System:	US State Plane 1927 (Exact solution)	System Datum:	Mean Sea Level
Geo Datum:	NAD 1927 (NADCON CONUS)		
Map Zone:	Colorado North 501		

Site	Randall Creek R30 SESW Pad		
Site Position:		Northing:	600,150.00 usft
From:	Map	Easting:	2,313,800.00 usft
Position Uncertainty:	0.0 usft	Slot Radius:	13-3/16 "
		Latitude:	40° 58' 31.007 N
		Longitude:	104° 21' 49.130 W
		Grid Convergence:	0.73 °

Well	Randall Creek 511-3019H		
Well Position	+N/-S	-48.7 usft	Northing:
	+E/-W	16.7 usft	Easting:
Position Uncertainty	0.0 usft	Wellhead Elevation:	0.0 usft
		Latitude:	40° 58' 30.526 N
		Longitude:	104° 21' 48.913 W
		Ground Level:	5,380.0 usft

Wellbore	OH				
Magnetics	Model Name	Sample Date	Declination (°)	Dip Angle (°)	Field Strength (nT)
	IGRF2015	7/1/2015	8.25	67.43	52,950

Design	APD Plan (Plat Cert 5/29/15)			
Audit Notes:				
Version:	Phase:	PROTOTYPE	Tie On Depth:	0.0
Vertical Section:	Depth From (TVD) (usft)	+N/-S (usft)	+E/-W (usft)	Direction (°)
	0.0	0.0	0.0	357.31

Plan Sections										
Measured Depth (usft)	Inclination (°)	Azimuth (°)	Vertical Depth (usft)	+N/-S (usft)	+E/-W (usft)	Dogleg Rate (°/100usft)	Build Rate (°/100usft)	Turn Rate (°/100usft)	TFO (°)	Target
0.0	0.00	0.00	0.0	0.0	0.0	0.00	0.00	0.00	0.00	
7,064.5	0.00	0.00	7,064.5	0.0	0.0	0.00	0.00	0.00	0.00	
7,814.5	90.00	333.00	7,542.0	425.4	-216.8	12.00	12.00	0.00	333.00	
8,714.3	90.00	360.00	7,542.0	1,292.3	-424.9	3.00	0.00	3.00	90.00	RC 511-3019H PBHL
16,490.6	90.00	360.00	7,542.0	9,068.6	-425.6	0.00	0.00	0.00	0.00	RC 511-3019H PBHL

EOG Resources, Inc.

Planning Report

Database:	EDM_DENVER	Local Co-ordinate Reference:	Well Randall Creek 511-3019H
Company:	Denver Division- Colorado	TVD Reference:	RKB @ 5405.0usft (KB GL+25')
Project:	DJ - Hereford Ranch	MD Reference:	RKB @ 5405.0usft (KB GL+25')
Site:	Randall Creek R30 SESW Pad	North Reference:	True
Well:	Randall Creek 511-3019H	Survey Calculation Method:	Minimum Curvature
Wellbore:	OH		
Design:	APD Plan (Plat Cert 5/29/15)		

Planned Survey									
Measured Depth (usft)	Inclination (°)	Azimuth (°)	Vertical Depth (usft)	+N/-S (usft)	+E/-W (usft)	Vertical Section (usft)	Dogleg Rate (°/100usft)	Build Rate (°/100usft)	Turn Rate (°/100usft)
0.0	0.00	0.00	0.0	0.0	0.0	0.0	0.00	0.00	0.00
100.0	0.00	0.00	100.0	0.0	0.0	0.0	0.00	0.00	0.00
200.0	0.00	0.00	200.0	0.0	0.0	0.0	0.00	0.00	0.00
300.0	0.00	0.00	300.0	0.0	0.0	0.0	0.00	0.00	0.00
400.0	0.00	0.00	400.0	0.0	0.0	0.0	0.00	0.00	0.00
500.0	0.00	0.00	500.0	0.0	0.0	0.0	0.00	0.00	0.00
600.0	0.00	0.00	600.0	0.0	0.0	0.0	0.00	0.00	0.00
700.0	0.00	0.00	700.0	0.0	0.0	0.0	0.00	0.00	0.00
800.0	0.00	0.00	800.0	0.0	0.0	0.0	0.00	0.00	0.00
900.0	0.00	0.00	900.0	0.0	0.0	0.0	0.00	0.00	0.00
1,000.0	0.00	0.00	1,000.0	0.0	0.0	0.0	0.00	0.00	0.00
1,100.0	0.00	0.00	1,100.0	0.0	0.0	0.0	0.00	0.00	0.00
1,200.0	0.00	0.00	1,200.0	0.0	0.0	0.0	0.00	0.00	0.00
1,300.0	0.00	0.00	1,300.0	0.0	0.0	0.0	0.00	0.00	0.00
1,400.0	0.00	0.00	1,400.0	0.0	0.0	0.0	0.00	0.00	0.00
1,411.0	0.00	0.00	1,411.0	0.0	0.0	0.0	0.00	0.00	0.00
9 5/8" Surface									
1,500.0	0.00	0.00	1,500.0	0.0	0.0	0.0	0.00	0.00	0.00
1,600.0	0.00	0.00	1,600.0	0.0	0.0	0.0	0.00	0.00	0.00
1,700.0	0.00	0.00	1,700.0	0.0	0.0	0.0	0.00	0.00	0.00
1,800.0	0.00	0.00	1,800.0	0.0	0.0	0.0	0.00	0.00	0.00
1,900.0	0.00	0.00	1,900.0	0.0	0.0	0.0	0.00	0.00	0.00
2,000.0	0.00	0.00	2,000.0	0.0	0.0	0.0	0.00	0.00	0.00
2,100.0	0.00	0.00	2,100.0	0.0	0.0	0.0	0.00	0.00	0.00
2,200.0	0.00	0.00	2,200.0	0.0	0.0	0.0	0.00	0.00	0.00
2,300.0	0.00	0.00	2,300.0	0.0	0.0	0.0	0.00	0.00	0.00
2,400.0	0.00	0.00	2,400.0	0.0	0.0	0.0	0.00	0.00	0.00
2,500.0	0.00	0.00	2,500.0	0.0	0.0	0.0	0.00	0.00	0.00
2,600.0	0.00	0.00	2,600.0	0.0	0.0	0.0	0.00	0.00	0.00
2,700.0	0.00	0.00	2,700.0	0.0	0.0	0.0	0.00	0.00	0.00
2,800.0	0.00	0.00	2,800.0	0.0	0.0	0.0	0.00	0.00	0.00
2,900.0	0.00	0.00	2,900.0	0.0	0.0	0.0	0.00	0.00	0.00
3,000.0	0.00	0.00	3,000.0	0.0	0.0	0.0	0.00	0.00	0.00
3,100.0	0.00	0.00	3,100.0	0.0	0.0	0.0	0.00	0.00	0.00
3,200.0	0.00	0.00	3,200.0	0.0	0.0	0.0	0.00	0.00	0.00
3,300.0	0.00	0.00	3,300.0	0.0	0.0	0.0	0.00	0.00	0.00
3,400.0	0.00	0.00	3,400.0	0.0	0.0	0.0	0.00	0.00	0.00
3,500.0	0.00	0.00	3,500.0	0.0	0.0	0.0	0.00	0.00	0.00
3,600.0	0.00	0.00	3,600.0	0.0	0.0	0.0	0.00	0.00	0.00
3,700.0	0.00	0.00	3,700.0	0.0	0.0	0.0	0.00	0.00	0.00
3,800.0	0.00	0.00	3,800.0	0.0	0.0	0.0	0.00	0.00	0.00
3,900.0	0.00	0.00	3,900.0	0.0	0.0	0.0	0.00	0.00	0.00
4,000.0	0.00	0.00	4,000.0	0.0	0.0	0.0	0.00	0.00	0.00
4,100.0	0.00	0.00	4,100.0	0.0	0.0	0.0	0.00	0.00	0.00
4,200.0	0.00	0.00	4,200.0	0.0	0.0	0.0	0.00	0.00	0.00
4,300.0	0.00	0.00	4,300.0	0.0	0.0	0.0	0.00	0.00	0.00
4,400.0	0.00	0.00	4,400.0	0.0	0.0	0.0	0.00	0.00	0.00
4,500.0	0.00	0.00	4,500.0	0.0	0.0	0.0	0.00	0.00	0.00
4,600.0	0.00	0.00	4,600.0	0.0	0.0	0.0	0.00	0.00	0.00
4,700.0	0.00	0.00	4,700.0	0.0	0.0	0.0	0.00	0.00	0.00
4,800.0	0.00	0.00	4,800.0	0.0	0.0	0.0	0.00	0.00	0.00
4,900.0	0.00	0.00	4,900.0	0.0	0.0	0.0	0.00	0.00	0.00
5,000.0	0.00	0.00	5,000.0	0.0	0.0	0.0	0.00	0.00	0.00
5,100.0	0.00	0.00	5,100.0	0.0	0.0	0.0	0.00	0.00	0.00

EOG Resources, Inc.

Planning Report

Database:	EDM_DENVER	Local Co-ordinate Reference:	Well Randall Creek 511-3019H
Company:	Denver Division- Colorado	TVD Reference:	RKB @ 5405.0usft (KB GL+25')
Project:	DJ - Hereford Ranch	MD Reference:	RKB @ 5405.0usft (KB GL+25')
Site:	Randall Creek R30 SESW Pad	North Reference:	True
Well:	Randall Creek 511-3019H	Survey Calculation Method:	Minimum Curvature
Wellbore:	OH		
Design:	APD Plan (Plat Cert 5/29/15)		

Planned Survey									
Measured Depth (usft)	Inclination (°)	Azimuth (°)	Vertical Depth (usft)	+N/-S (usft)	+E/-W (usft)	Vertical Section (usft)	Dogleg Rate (°/100usft)	Build Rate (°/100usft)	Turn Rate (°/100usft)
5,200.0	0.00	0.00	5,200.0	0.0	0.0	0.0	0.00	0.00	0.00
5,300.0	0.00	0.00	5,300.0	0.0	0.0	0.0	0.00	0.00	0.00
5,400.0	0.00	0.00	5,400.0	0.0	0.0	0.0	0.00	0.00	0.00
5,500.0	0.00	0.00	5,500.0	0.0	0.0	0.0	0.00	0.00	0.00
5,600.0	0.00	0.00	5,600.0	0.0	0.0	0.0	0.00	0.00	0.00
5,700.0	0.00	0.00	5,700.0	0.0	0.0	0.0	0.00	0.00	0.00
5,800.0	0.00	0.00	5,800.0	0.0	0.0	0.0	0.00	0.00	0.00
5,900.0	0.00	0.00	5,900.0	0.0	0.0	0.0	0.00	0.00	0.00
6,000.0	0.00	0.00	6,000.0	0.0	0.0	0.0	0.00	0.00	0.00
6,100.0	0.00	0.00	6,100.0	0.0	0.0	0.0	0.00	0.00	0.00
6,200.0	0.00	0.00	6,200.0	0.0	0.0	0.0	0.00	0.00	0.00
6,300.0	0.00	0.00	6,300.0	0.0	0.0	0.0	0.00	0.00	0.00
6,400.0	0.00	0.00	6,400.0	0.0	0.0	0.0	0.00	0.00	0.00
6,500.0	0.00	0.00	6,500.0	0.0	0.0	0.0	0.00	0.00	0.00
6,600.0	0.00	0.00	6,600.0	0.0	0.0	0.0	0.00	0.00	0.00
6,700.0	0.00	0.00	6,700.0	0.0	0.0	0.0	0.00	0.00	0.00
6,800.0	0.00	0.00	6,800.0	0.0	0.0	0.0	0.00	0.00	0.00
6,900.0	0.00	0.00	6,900.0	0.0	0.0	0.0	0.00	0.00	0.00
7,000.0	0.00	0.00	7,000.0	0.0	0.0	0.0	0.00	0.00	0.00
7,064.5	0.00	0.00	7,064.5	0.0	0.0	0.0	0.00	0.00	0.00
7,100.0	4.26	333.00	7,100.0	1.2	-0.6	1.2	12.00	12.00	0.00
7,200.0	16.26	333.00	7,198.2	17.0	-8.7	17.4	12.00	12.00	0.00
7,300.0	28.26	333.00	7,290.6	50.7	-25.8	51.9	12.00	12.00	0.00
7,400.0	40.26	333.00	7,373.1	100.8	-51.3	103.1	12.00	12.00	0.00
7,500.0	52.26	333.00	7,442.1	165.0	-84.1	168.8	12.00	12.00	0.00
7,600.0	64.26	333.00	7,494.6	240.7	-122.6	246.2	12.00	12.00	0.00
7,700.0	76.26	333.00	7,528.3	324.4	-165.3	331.8	12.00	12.00	0.00
7,800.0	88.26	333.00	7,541.7	412.5	-210.2	421.9	12.00	12.00	0.00
7,814.5	90.00	333.00	7,542.0	425.4	-216.8	435.1	12.00	12.00	0.00
7,815.0	90.00	333.02	7,542.0	425.9	-217.0	435.6	3.00	0.00	3.00
7" Intermediate (Opt 2)									
7,900.0	90.00	335.57	7,542.0	502.4	-253.9	513.8	3.00	0.00	3.00
8,000.0	90.00	338.57	7,542.0	594.5	-292.8	607.6	3.00	0.00	3.00
8,100.0	90.00	341.57	7,542.0	688.5	-326.9	703.1	3.00	0.00	3.00
8,200.0	90.00	344.57	7,542.0	784.2	-356.0	800.0	3.00	0.00	3.00
8,300.0	90.00	347.57	7,542.0	881.2	-380.1	898.1	3.00	0.00	3.00
8,400.0	90.00	350.57	7,542.0	979.4	-399.1	997.0	3.00	0.00	3.00
8,500.0	90.00	353.57	7,542.0	1,078.4	-412.9	1,096.6	3.00	0.00	3.00
8,600.0	90.00	356.57	7,542.0	1,178.1	-421.5	1,196.5	3.00	0.00	3.00
8,700.0	90.00	359.57	7,542.0	1,278.0	-424.9	1,296.5	3.00	0.00	3.00
8,714.3	90.00	360.00	7,542.0	1,292.3	-424.9	1,310.8	3.00	0.00	3.00
8,800.0	90.00	360.00	7,542.0	1,378.0	-424.9	1,396.4	0.00	0.00	0.00
8,900.0	90.00	360.00	7,542.0	1,478.0	-424.9	1,496.3	0.00	0.00	0.00
9,000.0	90.00	360.00	7,542.0	1,578.0	-424.9	1,596.2	0.00	0.00	0.00
9,100.0	90.00	360.00	7,542.0	1,678.0	-425.0	1,696.1	0.00	0.00	0.00
9,200.0	90.00	360.00	7,542.0	1,778.0	-425.0	1,795.9	0.00	0.00	0.00
9,300.0	90.00	360.00	7,542.0	1,878.0	-425.0	1,895.8	0.00	0.00	0.00
9,400.0	90.00	360.00	7,542.0	1,978.0	-425.0	1,995.7	0.00	0.00	0.00
9,500.0	90.00	360.00	7,542.0	2,078.0	-425.0	2,095.6	0.00	0.00	0.00
9,600.0	90.00	360.00	7,542.0	2,178.0	-425.0	2,195.5	0.00	0.00	0.00
9,700.0	90.00	360.00	7,542.0	2,278.0	-425.0	2,295.4	0.00	0.00	0.00
9,800.0	90.00	360.00	7,542.0	2,378.0	-425.0	2,395.3	0.00	0.00	0.00
9,900.0	90.00	360.00	7,542.0	2,478.0	-425.0	2,495.2	0.00	0.00	0.00

EOG Resources, Inc.

Planning Report

Database:	EDM_DENVER	Local Co-ordinate Reference:	Well Randall Creek 511-3019H
Company:	Denver Division- Colorado	TVD Reference:	RKB @ 5405.0usft (KB GL+25')
Project:	DJ - Hereford Ranch	MD Reference:	RKB @ 5405.0usft (KB GL+25')
Site:	Randall Creek R30 SESW Pad	North Reference:	True
Well:	Randall Creek 511-3019H	Survey Calculation Method:	Minimum Curvature
Wellbore:	OH		
Design:	APD Plan (Plat Cert 5/29/15)		

Planned Survey									
Measured Depth (usft)	Inclination (°)	Azimuth (°)	Vertical Depth (usft)	+N/-S (usft)	+E/-W (usft)	Vertical Section (usft)	Dogleg Rate (°/100usft)	Build Rate (°/100usft)	Turn Rate (°/100usft)
10,000.0	90.00	360.00	7,542.0	2,578.0	-425.0	2,595.1	0.00	0.00	0.00
10,100.0	90.00	360.00	7,542.0	2,678.0	-425.0	2,695.0	0.00	0.00	0.00
10,200.0	90.00	360.00	7,542.0	2,778.0	-425.0	2,794.9	0.00	0.00	0.00
10,300.0	90.00	360.00	7,542.0	2,878.0	-425.1	2,894.7	0.00	0.00	0.00
10,400.0	90.00	360.00	7,542.0	2,978.0	-425.1	2,994.6	0.00	0.00	0.00
10,500.0	90.00	360.00	7,542.0	3,078.0	-425.1	3,094.5	0.00	0.00	0.00
10,600.0	90.00	360.00	7,542.0	3,178.0	-425.1	3,194.4	0.00	0.00	0.00
10,700.0	90.00	360.00	7,542.0	3,278.0	-425.1	3,294.3	0.00	0.00	0.00
10,800.0	90.00	360.00	7,542.0	3,378.0	-425.1	3,394.2	0.00	0.00	0.00
10,900.0	90.00	360.00	7,542.0	3,478.0	-425.1	3,494.1	0.00	0.00	0.00
11,000.0	90.00	360.00	7,542.0	3,578.0	-425.1	3,594.0	0.00	0.00	0.00
11,100.0	90.00	360.00	7,542.0	3,678.0	-425.1	3,693.9	0.00	0.00	0.00
11,200.0	90.00	360.00	7,542.0	3,778.0	-425.1	3,793.8	0.00	0.00	0.00
11,300.0	90.00	360.00	7,542.0	3,878.0	-425.1	3,893.6	0.00	0.00	0.00
11,400.0	90.00	360.00	7,542.0	3,978.0	-425.1	3,993.5	0.00	0.00	0.00
11,500.0	90.00	360.00	7,542.0	4,078.0	-425.2	4,093.4	0.00	0.00	0.00
11,600.0	90.00	360.00	7,542.0	4,178.0	-425.2	4,193.3	0.00	0.00	0.00
11,700.0	90.00	360.00	7,542.0	4,278.0	-425.2	4,293.2	0.00	0.00	0.00
11,800.0	90.00	360.00	7,542.0	4,378.0	-425.2	4,393.1	0.00	0.00	0.00
11,900.0	90.00	360.00	7,542.0	4,478.0	-425.2	4,493.0	0.00	0.00	0.00
12,000.0	90.00	360.00	7,542.0	4,578.0	-425.2	4,592.9	0.00	0.00	0.00
12,100.0	90.00	360.00	7,542.0	4,678.0	-425.2	4,692.8	0.00	0.00	0.00
12,200.0	90.00	360.00	7,542.0	4,778.0	-425.2	4,792.7	0.00	0.00	0.00
12,300.0	90.00	360.00	7,542.0	4,878.0	-425.2	4,892.6	0.00	0.00	0.00
12,400.0	90.00	360.00	7,542.0	4,978.0	-425.2	4,992.4	0.00	0.00	0.00
12,500.0	90.00	360.00	7,542.0	5,078.0	-425.2	5,092.3	0.00	0.00	0.00
12,600.0	90.00	360.00	7,542.0	5,178.0	-425.2	5,192.2	0.00	0.00	0.00
12,700.0	90.00	360.00	7,542.0	5,278.0	-425.3	5,292.1	0.00	0.00	0.00
12,800.0	90.00	360.00	7,542.0	5,378.0	-425.3	5,392.0	0.00	0.00	0.00
12,900.0	90.00	360.00	7,542.0	5,478.0	-425.3	5,491.9	0.00	0.00	0.00
13,000.0	90.00	360.00	7,542.0	5,578.0	-425.3	5,591.8	0.00	0.00	0.00
13,100.0	90.00	360.00	7,542.0	5,678.0	-425.3	5,691.7	0.00	0.00	0.00
13,200.0	90.00	360.00	7,542.0	5,778.0	-425.3	5,791.6	0.00	0.00	0.00
13,300.0	90.00	360.00	7,542.0	5,878.0	-425.3	5,891.5	0.00	0.00	0.00
13,400.0	90.00	360.00	7,542.0	5,978.0	-425.3	5,991.3	0.00	0.00	0.00
13,500.0	90.00	360.00	7,542.0	6,078.0	-425.3	6,091.2	0.00	0.00	0.00
13,600.0	90.00	360.00	7,542.0	6,178.0	-425.3	6,191.1	0.00	0.00	0.00
13,700.0	90.00	360.00	7,542.0	6,278.0	-425.3	6,291.0	0.00	0.00	0.00
13,800.0	90.00	360.00	7,542.0	6,378.0	-425.3	6,390.9	0.00	0.00	0.00
13,900.0	90.00	360.00	7,542.0	6,478.0	-425.3	6,490.8	0.00	0.00	0.00
14,000.0	90.00	360.00	7,542.0	6,578.0	-425.4	6,590.7	0.00	0.00	0.00
14,100.0	90.00	360.00	7,542.0	6,678.0	-425.4	6,690.6	0.00	0.00	0.00
14,200.0	90.00	360.00	7,542.0	6,778.0	-425.4	6,790.5	0.00	0.00	0.00
14,300.0	90.00	360.00	7,542.0	6,878.0	-425.4	6,890.4	0.00	0.00	0.00
14,400.0	90.00	360.00	7,542.0	6,978.0	-425.4	6,990.3	0.00	0.00	0.00
14,500.0	90.00	360.00	7,542.0	7,078.0	-425.4	7,090.1	0.00	0.00	0.00
14,600.0	90.00	360.00	7,542.0	7,178.0	-425.4	7,190.0	0.00	0.00	0.00
14,700.0	90.00	360.00	7,542.0	7,278.0	-425.4	7,289.9	0.00	0.00	0.00
14,800.0	90.00	360.00	7,542.0	7,378.0	-425.4	7,389.8	0.00	0.00	0.00
14,900.0	90.00	360.00	7,542.0	7,478.0	-425.4	7,489.7	0.00	0.00	0.00
15,000.0	90.00	360.00	7,542.0	7,578.0	-425.4	7,589.6	0.00	0.00	0.00
15,100.0	90.00	360.00	7,542.0	7,678.0	-425.4	7,689.5	0.00	0.00	0.00
15,200.0	90.00	360.00	7,542.0	7,778.0	-425.5	7,789.4	0.00	0.00	0.00
15,300.0	90.00	360.00	7,542.0	7,878.0	-425.5	7,889.3	0.00	0.00	0.00

EOG Resources, Inc.

Planning Report

Database:	EDM_DENVER	Local Co-ordinate Reference:	Well Randall Creek 511-3019H
Company:	Denver Division- Colorado	TVD Reference:	RKB @ 5405.0usft (KB GL+25')
Project:	DJ - Hereford Ranch	MD Reference:	RKB @ 5405.0usft (KB GL+25')
Site:	Randall Creek R30 SESW Pad	North Reference:	True
Well:	Randall Creek 511-3019H	Survey Calculation Method:	Minimum Curvature
Wellbore:	OH		
Design:	APD Plan (Plat Cert 5/29/15)		

Planned Survey										
Measured Depth (usft)	Inclination (°)	Azimuth (°)	Vertical Depth (usft)	+N/-S (usft)	+E/-W (usft)	Vertical Section (usft)	Dogleg Rate (°/100usft)	Build Rate (°/100usft)	Turn Rate (°/100usft)	
15,400.0	90.00	360.00	7,542.0	7,978.0	-425.5	7,989.2	0.00	0.00	0.00	
15,500.0	90.00	360.00	7,542.0	8,078.0	-425.5	8,089.0	0.00	0.00	0.00	
15,600.0	90.00	360.00	7,542.0	8,178.0	-425.5	8,188.9	0.00	0.00	0.00	
15,700.0	90.00	360.00	7,542.0	8,278.0	-425.5	8,288.8	0.00	0.00	0.00	
15,800.0	90.00	360.00	7,542.0	8,378.0	-425.5	8,388.7	0.00	0.00	0.00	
15,900.0	90.00	360.00	7,542.0	8,478.0	-425.5	8,488.6	0.00	0.00	0.00	
16,000.0	90.00	360.00	7,542.0	8,578.0	-425.5	8,588.5	0.00	0.00	0.00	
16,100.0	90.00	360.00	7,542.0	8,678.0	-425.5	8,688.4	0.00	0.00	0.00	
16,200.0	90.00	360.00	7,542.0	8,778.0	-425.5	8,788.3	0.00	0.00	0.00	
16,300.0	90.00	360.00	7,542.0	8,878.0	-425.5	8,888.2	0.00	0.00	0.00	
16,400.0	90.00	360.00	7,542.0	8,978.0	-425.6	8,988.1	0.00	0.00	0.00	
16,490.6	90.00	360.00	7,542.0	9,068.6	-425.6	9,078.6	0.00	0.00	0.00	
5 1/2" Prod (Opt 1) - 4 1/2" Liner (Opt 2)										

Design Targets										
Target Name	Dip Angle (°)	Dip Dir. (°)	TVD (usft)	+N/-S (usft)	+E/-W (usft)	Northing (usft)	Easting (usft)	Latitude		Longitude
- hit/miss target										
- Shape										
RC 511-3019H PBHL	0.00	0.00	7,542.0	9,068.6	-425.6	609,163.90	2,313,275.58	41° 0' 0.127 N		104° 21' 54.462 W
- plan hits target center										
- Point										

Casing Points						
Measured Depth (usft)	Vertical Depth (usft)	Name			Casing Diameter (")	Hole Diameter (")
1,411.0	1,411.0	9 5/8" Surface			9-5/8	13-1/2
7,815.0	7,542.0	7" Intermediate (Opt 2)			7	8-3/4
16,490.6	7,542.0	5 1/2" Prod (Opt 1)			5-1/2	8-3/4
16,490.6	7,542.0	4 1/2" Liner (Opt 2)			4-1/2	6-1/8