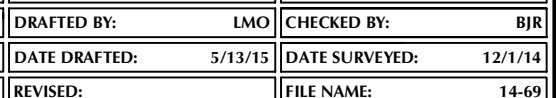
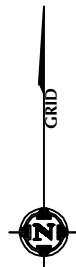
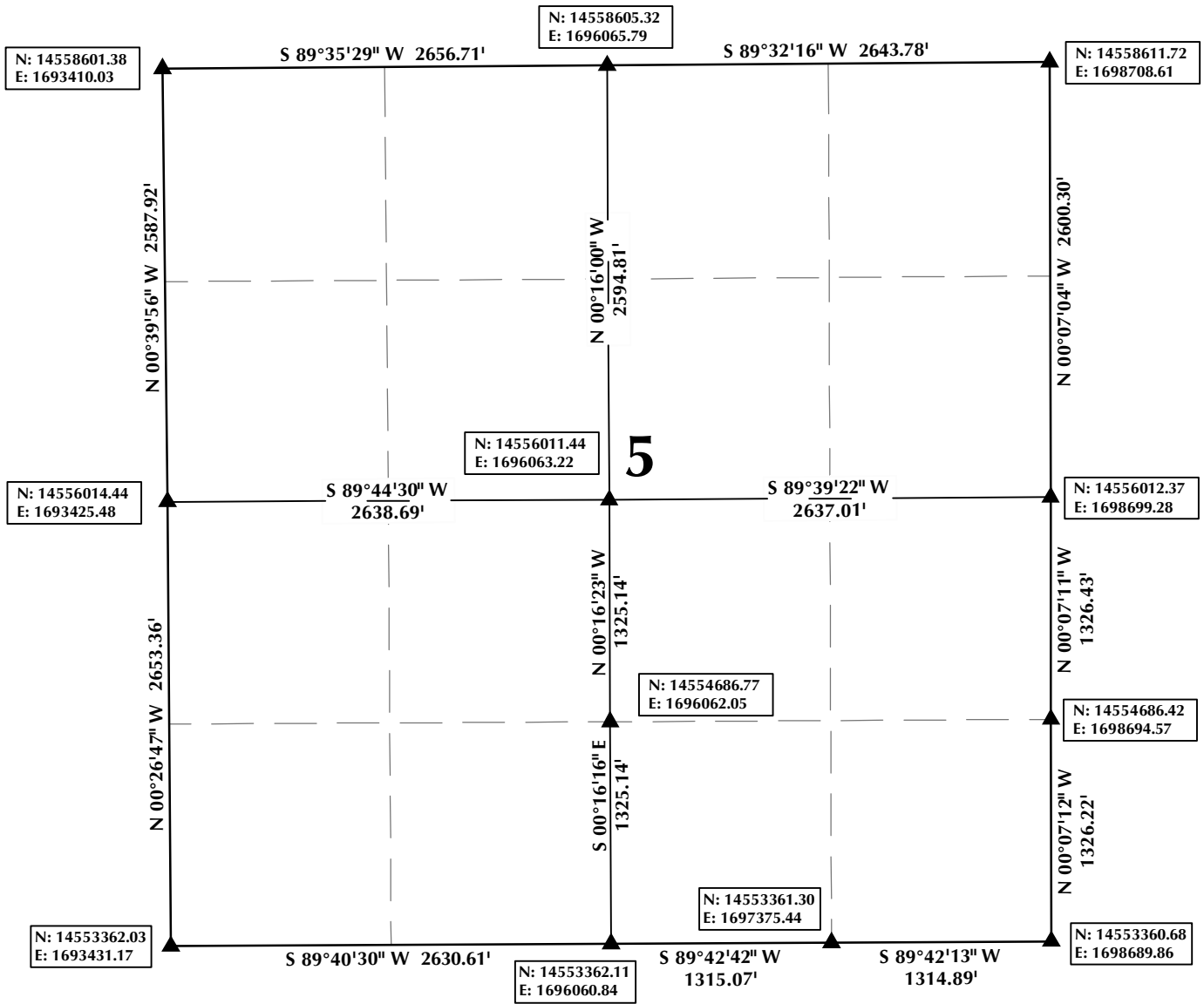


K:\ANADARKO\2014\2014 69 FORT LUPTON GREENS SEC 8 T1N R66W\PLATS\FORT LUPTON GREENS 29-8HZ.dwg, 5/14/2015 3:07:46 PM, lake



UTM COORDINATE EXHIBIT SECTION 5, T1N, R66W



SCALE: 1" = 1000'

NOTES:

- ▲ INDICATES FOUND SECTION CORNER
- INDICATES CALCULATED CORNER
- BEARINGS ARE BASED ON GRID NORTH, COLORADO STATE PLANE NORTH GRID (NAD 83)
- DRAWING N/E COORDINATES ARE BASED ON UTM COORDINATE SYSTEM NAD83, ZONE 13

UTM COORDINATE EXHIBIT
SECTION 5, T1N, R66W, 6TH P.M.
WELD COUNTY, COLORADO

**Kerr-McGee Oil &
Gas Onshore L.P.**
1099 18th Street
Denver, Colorado 80202



CONSULTING, LLC

SHERIDAN OFFICE
1095 Saberton Avenue
Sheridan, Wyoming 82801
Phone 307-674-0609

LOVELAND OFFICE
1635 Foxtrail Drive, Suite 204
Loveland, Colorado 80538
Phone 970-776-4331

DRAFTED BY:	MDZ	CHECKED BY:	BJR
DATE DRAFTED:	4/10/15	DATE SURVEYED:	12/1/14
REVISED:		FILE NAME:	14-69