

Caerus Oil and Gas LLC

Well Name: **Terrell 25-761-0157BH**

Surface Location: Terrell N 24 761 Pad Sec.24-T7N-R61W

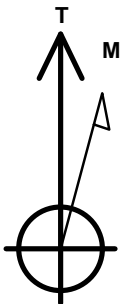
North American Datum 1983 , US State Plane 1983 , Colorado Northern Zone

Ground Elevation: 5018.0

+N/-S	+E/-W	Northing	Easting	Latitude	Longitude	Slot
0.0	0.0	1448285.24	3372288.01	40.556222	-104.160150	
RKB - 30' WELL @ 5048.0ft (RKB - 30')						

WELLBORE TARGET DETAILS

Name	TVD	+N/-S	+E/-W	Shape
SHL 1036'FSL, 1551'FWL, SEC.24	1.0	0.0	0.0	Point
BHL 460'FSL, 659'FWL, SEC.25	6478.0	-5905.6	-1223.0	Point
LPL 460'FNL, 659'FWL, Sec.25	6513.0	-1497.3	-946.2	Point



Azimuths to True North
Magnetic North: 8.00°

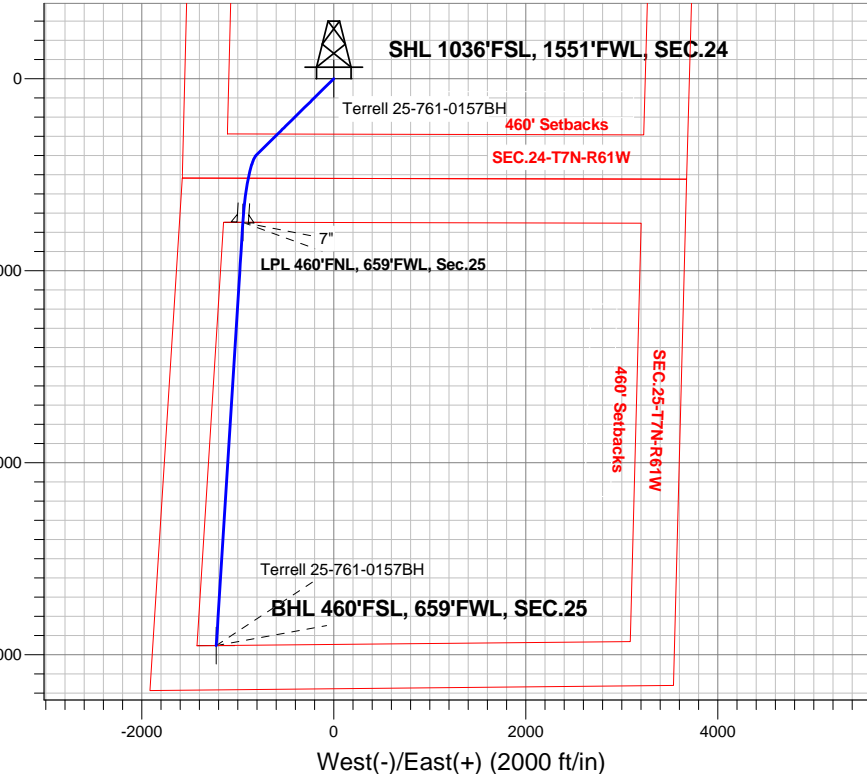
Magnetic Field
Strength: 52844.0snT
Dip Angle: 67.13°
Date: 7/8/2015
Model: IGRF2010

Terrell N 24 761 Pad Sec.24-T7N-R61W
Terrell 25-761-0157BH
Plan #1 (7-07-15)
7:32, July 08 2015

ANNOTATIONS

TVD	MD	Annotation
700.0	700.0	KOP - Start Build 1.00
2088.2	2102.1	Start 3964.3 hold at 2102.1 MD
5934.3	6066.4	Start DLS 8.00 TFO -42.56
6513.0	7066.9	Start 4417.1 hold at 7066.9 MD
6478.0	11484.0	TD at 11484.0

South(-)/North(+) (2000 ft/in)

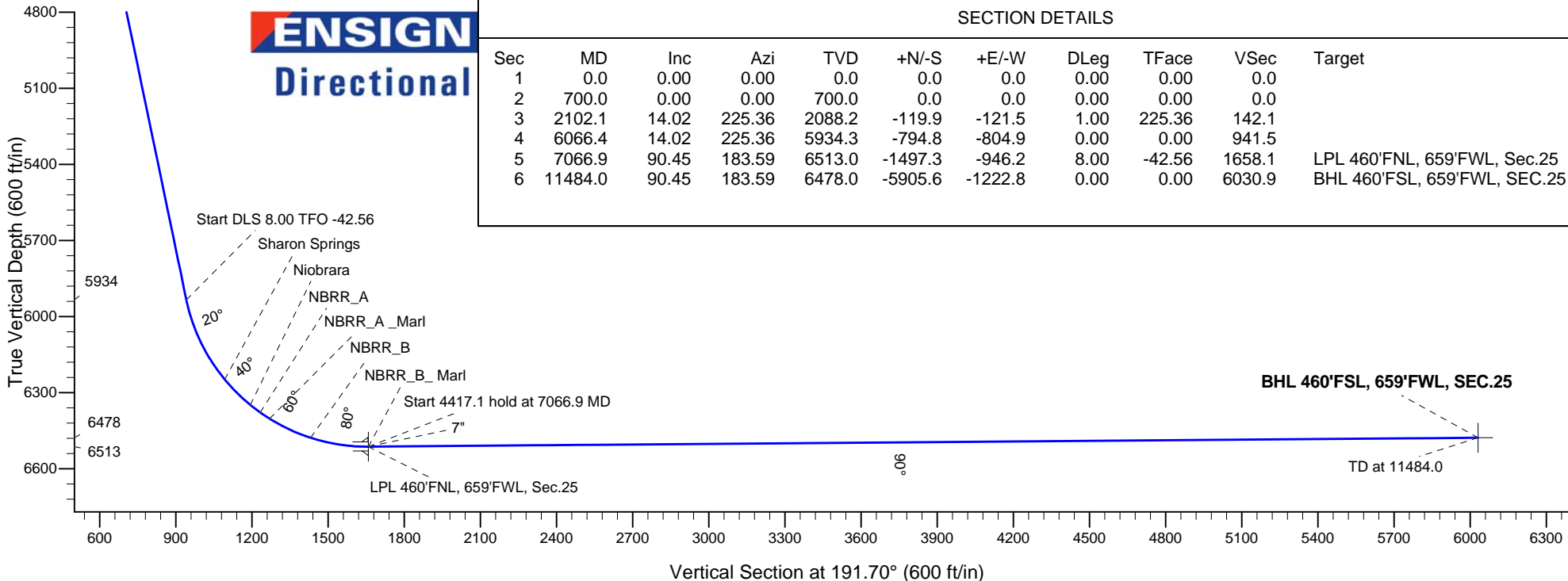


West(-)/East(+) (2000 ft/in)

ENSIGN
Directional

SECTION DETAILS

Sec	MD	Inc	Azi	TVD	+N/-S	+E/-W	DLeg	TFace	VSec	Target
1	0.0	0.00	0.00	0.0	0.0	0.0	0.00	0.00	0.0	
2	700.0	0.00	0.00	700.0	0.0	0.0	0.00	0.00	0.0	
3	2102.1	14.02	225.36	2088.2	-119.9	-121.5	1.00	225.36	142.1	
4	6066.4	14.02	225.36	5934.3	-794.8	-804.9	0.00	0.00	941.5	
5	7066.9	90.45	183.59	6513.0	-1497.3	-946.2	8.00	-42.56	1658.1	LPL 460'FNL, 659'FWL, Sec.25
6	11484.0	90.45	183.59	6478.0	-5905.6	-1222.8	0.00	0.00	6030.9	BHL 460'FSL, 659'FWL, SEC.25





Caerus Oil and Gas LLC

SEC.24-T7N-R61W

Terrell N 24 761 Pad Sec.24-T7N-R61W

Terrell 25-761-0157BH

Wellbore #1

Plan: Plan #1 (7-07-15)

Standard Planning Report

08 July, 2015

Database:	EDMNEW	Local Co-ordinate Reference:	Well Terrell 25-761-0157BH
Company:	Caerus Oil and Gas LLC	TVD Reference:	WELL @ 5048.0ft (RKB - 30')
Project:	SEC.24-T7N-R61W	MD Reference:	WELL @ 5048.0ft (RKB - 30')
Site:	Terrell N 24 761 Pad Sec.24-T7N-R61W	North Reference:	True
Well:	Terrell 25-761-0157BH	Survey Calculation Method:	Minimum Curvature
Wellbore:	Wellbore #1		
Design:	Plan #1 (7-07-15)		

Project	SEC.24-T7N-R61W, Weld County, Colorado		
Map System:	US State Plane 1983	System Datum:	Mean Sea Level
Geo Datum:	North American Datum 1983		Using Well Reference Point
Map Zone:	Colorado Northern Zone		Using geodetic scale factor

Site	Terrell N 24 761 Pad Sec.24-T7N-R61W				
Site Position:		Northing:	1,448,285.39ft	Latitude:	40.556223
From:	Lat/Long	Easting:	3,372,273.00ft	Longitude:	-104.160204
Position Uncertainty:	0.0 ft	Slot Radius:	"	Grid Convergence:	0.87 °

Well	Terrell 25-761-0157BH					
Well Position	+N-S	-0.4 ft	Northing:	1,448,285.24 ft	Latitude:	40.556222
	+E-W	15.0 ft	Easting:	3,372,288.01 ft	Longitude:	-104.160150
Position Uncertainty		0.0 ft	Wellhead Elevation:	ft	Ground Level:	5,018.0ft

Wellbore	Wellbore #1				
Magnetics	Model Name	Sample Date	Declination (°)	Dip Angle (°)	Field Strength (nT)
	IGRF2010	7/8/2015	8.00	67.13	52,844

Design	Plan #1 (7-07-15)			
Audit Notes:				
Version:	Phase:	PROTOTYPE	Tie On Depth:	0.0
Vertical Section:	Depth From (TVD) (ft)	+N/-S (ft)	+E/-W (ft)	Direction (°)
	0.0	0.0	0.0	191.70

Plan Sections										
Measured Depth (ft)	Inclination (°)	Azimuth (°)	Vertical Depth (ft)	+N/-S (ft)	+E/-W (ft)	Dogleg Rate (°/100ft)	Build Rate (°/100ft)	Turn Rate (°/100ft)	TFO (°)	Target
0.0	0.00	0.00	0.0	0.0	0.0	0.00	0.00	0.00	0.00	
700.0	0.00	0.00	700.0	0.0	0.0	0.00	0.00	0.00	0.00	
2,102.1	14.02	225.36	2,088.2	-119.9	-121.5	1.00	1.00	0.00	225.36	
6,066.4	14.02	225.36	5,934.3	-794.8	-804.9	0.00	0.00	0.00	0.00	
7,066.9	90.45	183.59	6,513.0	-1,497.3	-946.2	8.00	7.64	-4.18	-42.56	LPL 460'FNL, 659°F
11,484.0	90.45	183.59	6,478.0	-5,905.6	-1,222.8	0.00	0.00	0.00	0.00	BHL 460'FSL, 659°F

Database:	EDMNEW	Local Co-ordinate Reference:	Well Terrell 25-761-0157BH
Company:	Caerus Oil and Gas LLC	TVD Reference:	WELL @ 5048.0ft (RKB - 30')
Project:	SEC.24-T7N-R61W	MD Reference:	WELL @ 5048.0ft (RKB - 30')
Site:	Terrell N 24 761 Pad Sec.24-T7N-R61W	North Reference:	True
Well:	Terrell 25-761-0157BH	Survey Calculation Method:	Minimum Curvature
Wellbore:	Wellbore #1		
Design:	Plan #1 (7-07-15)		

Planned Survey									
Measured Depth (ft)	Inclination (°)	Azimuth (°)	Vertical Depth (ft)	+N/-S (ft)	+E/-W (ft)	Vertical Section (ft)	Dogleg Rate (°/100ft)	Build Rate (°/100ft)	Turn Rate (°/100ft)
0.0	0.00	0.00	0.0	0.0	0.0	0.0	0.00	0.00	0.00
1.0	0.00	0.00	1.0	0.0	0.0	0.0	0.00	0.00	0.00
SHL 1036'FSL, 1551'FWL, SEC.24									
100.0	0.00	0.00	100.0	0.0	0.0	0.0	0.00	0.00	0.00
200.0	0.00	0.00	200.0	0.0	0.0	0.0	0.00	0.00	0.00
300.0	0.00	0.00	300.0	0.0	0.0	0.0	0.00	0.00	0.00
400.0	0.00	0.00	400.0	0.0	0.0	0.0	0.00	0.00	0.00
500.0	0.00	0.00	500.0	0.0	0.0	0.0	0.00	0.00	0.00
600.0	0.00	0.00	600.0	0.0	0.0	0.0	0.00	0.00	0.00
700.0	0.00	0.00	700.0	0.0	0.0	0.0	0.00	0.00	0.00
KOP - Start Build 1.00									
800.0	1.00	225.36	800.0	-0.6	-0.6	0.7	1.00	1.00	0.00
900.0	2.00	225.36	900.0	-2.5	-2.5	2.9	1.00	1.00	0.00
1,000.0	3.00	225.36	999.9	-5.5	-5.6	6.5	1.00	1.00	0.00
1,100.0	4.00	225.36	1,099.7	-9.8	-9.9	11.6	1.00	1.00	0.00
1,200.0	5.00	225.36	1,199.4	-15.3	-15.5	18.1	1.00	1.00	0.00
1,300.0	6.00	225.36	1,298.9	-22.1	-22.3	26.1	1.00	1.00	0.00
1,400.0	7.00	225.36	1,398.3	-30.0	-30.4	35.5	1.00	1.00	0.00
1,500.0	8.00	225.36	1,497.4	-39.2	-39.7	46.4	1.00	1.00	0.00
1,600.0	9.00	225.36	1,596.3	-49.6	-50.2	58.7	1.00	1.00	0.00
1,700.0	10.00	225.36	1,694.9	-61.2	-61.9	72.4	1.00	1.00	0.00
1,800.0	11.00	225.36	1,793.3	-74.0	-74.9	87.6	1.00	1.00	0.00
1,900.0	12.00	225.36	1,891.2	-88.0	-89.1	104.2	1.00	1.00	0.00
2,000.0	13.00	225.36	1,988.9	-103.2	-104.5	122.2	1.00	1.00	0.00
2,100.0	14.00	225.36	2,086.1	-119.6	-121.1	141.7	1.00	1.00	0.00
2,102.1	14.02	225.36	2,088.2	-119.9	-121.5	142.1	1.00	1.00	0.00
Start 3964.3 hold at 2102.1 MD									
2,200.0	14.02	225.36	2,183.1	-136.6	-138.3	161.8	0.00	0.00	0.00
2,300.0	14.02	225.36	2,280.2	-153.6	-155.6	182.0	0.00	0.00	0.00
2,400.0	14.02	225.36	2,377.2	-170.7	-172.8	202.1	0.00	0.00	0.00
2,500.0	14.02	225.36	2,474.2	-187.7	-190.1	222.3	0.00	0.00	0.00
2,600.0	14.02	225.36	2,571.2	-204.7	-207.3	242.5	0.00	0.00	0.00
2,700.0	14.02	225.36	2,668.2	-221.7	-224.5	262.6	0.00	0.00	0.00
2,800.0	14.02	225.36	2,765.3	-238.7	-241.8	282.8	0.00	0.00	0.00
2,900.0	14.02	225.36	2,862.3	-255.8	-259.0	303.0	0.00	0.00	0.00
3,000.0	14.02	225.36	2,959.3	-272.8	-276.3	323.1	0.00	0.00	0.00
3,100.0	14.02	225.36	3,056.3	-289.8	-293.5	343.3	0.00	0.00	0.00
3,200.0	14.02	225.36	3,153.3	-306.8	-310.7	363.5	0.00	0.00	0.00
3,300.0	14.02	225.36	3,250.4	-323.9	-328.0	383.6	0.00	0.00	0.00
3,400.0	14.02	225.36	3,347.4	-340.9	-345.2	403.8	0.00	0.00	0.00
3,500.0	14.02	225.36	3,444.4	-357.9	-362.5	424.0	0.00	0.00	0.00
3,514.0	14.02	225.36	3,458.0	-360.3	-364.9	426.8	0.00	0.00	0.00
Richard_SD									
3,600.0	14.02	225.36	3,541.4	-374.9	-379.7	444.1	0.00	0.00	0.00
3,700.0	14.02	225.36	3,638.4	-392.0	-396.9	464.3	0.00	0.00	0.00
3,800.0	14.02	225.36	3,735.5	-409.0	-414.2	484.5	0.00	0.00	0.00
3,900.0	14.02	225.36	3,832.5	-426.0	-431.4	504.6	0.00	0.00	0.00
4,000.0	14.02	225.36	3,929.5	-443.0	-448.7	524.8	0.00	0.00	0.00
4,100.0	14.02	225.36	4,026.5	-460.1	-465.9	545.0	0.00	0.00	0.00
4,200.0	14.02	225.36	4,123.5	-477.1	-483.1	565.1	0.00	0.00	0.00
4,300.0	14.02	225.36	4,220.6	-494.1	-500.4	585.3	0.00	0.00	0.00
4,400.0	14.02	225.36	4,317.6	-511.1	-517.6	605.5	0.00	0.00	0.00
4,500.0	14.02	225.36	4,414.6	-528.1	-534.9	625.6	0.00	0.00	0.00
4,539.6	14.02	225.36	4,453.0	-534.9	-541.7	633.6	0.00	0.00	0.00

Database:	EDMNEW	Local Co-ordinate Reference:	Well Terrell 25-761-0157BH
Company:	Caerus Oil and Gas LLC	TVD Reference:	WELL @ 5048.0ft (RKB - 30')
Project:	SEC.24-T7N-R61W	MD Reference:	WELL @ 5048.0ft (RKB - 30')
Site:	Terrell N 24 761 Pad Sec.24-T7N-R61W	North Reference:	True
Well:	Terrell 25-761-0157BH	Survey Calculation Method:	Minimum Curvature
Wellbore:	Wellbore #1		
Design:	Plan #1 (7-07-15)		

Planned Survey									
Measured Depth (ft)	Inclination (°)	Azimuth (°)	Vertical Depth (ft)	+N/-S (ft)	+E/-W (ft)	Vertical Section (ft)	Dogleg Rate (°/100ft)	Build Rate (°/100ft)	Turn Rate (°/100ft)
Sussex									
4,600.0	14.02	225.36	4,511.6	-545.2	-552.1	645.8	0.00	0.00	0.00
4,700.0	14.02	225.36	4,608.6	-562.2	-569.3	666.0	0.00	0.00	0.00
4,800.0	14.02	225.36	4,705.7	-579.2	-586.6	686.1	0.00	0.00	0.00
4,900.0	14.02	225.36	4,802.7	-596.2	-603.8	706.3	0.00	0.00	0.00
5,000.0	14.02	225.36	4,899.7	-613.3	-621.1	726.4	0.00	0.00	0.00
5,100.0	14.02	225.36	4,996.7	-630.3	-638.3	746.6	0.00	0.00	0.00
5,200.0	14.02	225.36	5,093.7	-647.3	-655.5	766.8	0.00	0.00	0.00
5,300.0	14.02	225.36	5,190.8	-664.3	-672.8	786.9	0.00	0.00	0.00
5,400.0	14.02	225.36	5,287.8	-681.4	-690.0	807.1	0.00	0.00	0.00
5,500.0	14.02	225.36	5,384.8	-698.4	-707.3	827.3	0.00	0.00	0.00
5,600.0	14.02	225.36	5,481.8	-715.4	-724.5	847.4	0.00	0.00	0.00
5,700.0	14.02	225.36	5,578.9	-732.4	-741.7	867.6	0.00	0.00	0.00
5,800.0	14.02	225.36	5,675.9	-749.4	-759.0	887.8	0.00	0.00	0.00
5,900.0	14.02	225.36	5,772.9	-766.5	-776.2	907.9	0.00	0.00	0.00
6,000.0	14.02	225.36	5,869.9	-783.5	-793.5	928.1	0.00	0.00	0.00
6,066.4	14.02	225.36	5,934.3	-794.8	-804.9	941.5	0.00	0.00	0.00
Start DLS 8.00 TFO -42.56									
6,100.0	16.10	218.79	5,966.8	-801.3	-810.7	949.0	8.00	6.19	-19.54
6,200.0	23.03	206.66	6,061.0	-829.6	-828.2	980.3	8.00	6.93	-12.13
6,300.0	30.47	200.06	6,150.2	-871.0	-845.7	1,024.4	8.00	7.44	-6.60
6,400.0	38.12	195.89	6,232.8	-924.6	-862.9	1,080.4	8.00	7.65	-4.18
6,419.5	39.63	195.24	6,248.0	-936.4	-866.2	1,092.6	8.00	7.72	-3.33
Sharon Springs									
6,500.0	45.88	192.94	6,307.1	-989.4	-879.4	1,147.1	8.00	7.76	-2.86
6,561.5	50.68	191.49	6,348.0	-1,034.2	-889.1	1,193.0	8.00	7.80	-2.36
Niobrara									
6,600.0	53.69	190.68	6,371.6	-1,064.1	-894.9	1,223.4	8.00	7.83	-2.10
6,610.9	54.55	190.46	6,378.0	-1,072.8	-896.6	1,232.3	8.00	7.83	-2.00
NBRR_A									
6,656.0	58.08	189.60	6,403.0	-1,109.7	-903.1	1,269.8	8.00	7.84	-1.89
NBRR_A_Marl									
6,700.0	61.54	188.83	6,425.1	-1,147.2	-909.2	1,307.8	8.00	7.85	-1.76
6,800.0	69.41	187.24	6,466.6	-1,237.2	-921.8	1,398.5	8.00	7.87	-1.59
6,834.7	72.14	186.73	6,478.0	-1,269.7	-925.8	1,431.1	8.00	7.88	-1.47
NBRR_B									
6,900.0	77.29	185.81	6,495.2	-1,332.4	-932.7	1,493.8	8.00	7.88	-1.41
7,000.0	85.18	184.47	6,510.5	-1,430.7	-941.5	1,591.9	8.00	7.89	-1.34
7,066.9	90.45	183.59	6,513.0	-1,497.3	-946.2	1,658.1	7.99	7.89	-1.31
Start 4417.1 hold at 7066.9 MD - NBRR_B_Marl - 7" - LPL 460'FNL, 659'FWL, Sec.25									
7,100.0	90.45	183.59	6,512.7	-1,530.4	-948.3	1,690.9	0.01	0.01	0.00
7,200.0	90.45	183.59	6,511.9	-1,630.2	-954.6	1,789.9	0.00	0.00	0.00
7,300.0	90.45	183.59	6,511.2	-1,730.0	-960.8	1,888.9	0.00	0.00	0.00
7,400.0	90.45	183.59	6,510.4	-1,829.8	-967.1	1,987.9	0.00	0.00	0.00
7,500.0	90.45	183.59	6,509.6	-1,929.6	-973.4	2,086.9	0.00	0.00	0.00
7,600.0	90.45	183.59	6,508.8	-2,029.4	-979.6	2,185.9	0.00	0.00	0.00
7,700.0	90.45	183.59	6,508.0	-2,129.2	-985.9	2,284.9	0.00	0.00	0.00
7,800.0	90.45	183.59	6,507.2	-2,229.0	-992.1	2,383.9	0.00	0.00	0.00
7,900.0	90.45	183.59	6,506.4	-2,328.8	-998.4	2,482.9	0.00	0.00	0.00
8,000.0	90.45	183.59	6,505.6	-2,428.6	-1,004.7	2,581.9	0.00	0.00	0.00
8,100.0	90.45	183.59	6,504.8	-2,528.4	-1,010.9	2,680.9	0.00	0.00	0.00
8,200.0	90.45	183.59	6,504.0	-2,628.2	-1,017.2	2,779.9	0.00	0.00	0.00
8,300.0	90.45	183.59	6,503.2	-2,728.0	-1,023.5	2,878.9	0.00	0.00	0.00

Database:	EDMNEW	Local Co-ordinate Reference:	Well Terrell 25-761-0157BH
Company:	Caerus Oil and Gas LLC	TVD Reference:	WELL @ 5048.0ft (RKB - 30')
Project:	SEC.24-T7N-R61W	MD Reference:	WELL @ 5048.0ft (RKB - 30')
Site:	Terrell N 24 761 Pad Sec.24-T7N-R61W	North Reference:	True
Well:	Terrell 25-761-0157BH	Survey Calculation Method:	Minimum Curvature
Wellbore:	Wellbore #1		
Design:	Plan #1 (7-07-15)		

Planned Survey									
Measured Depth (ft)	Inclination (°)	Azimuth (°)	Vertical Depth (ft)	+N/-S (ft)	+E/-W (ft)	Vertical Section (ft)	Dogleg Rate (°/100ft)	Build Rate (°/100ft)	Turn Rate (°/100ft)
8,400.0	90.45	183.59	6,502.4	-2,827.8	-1,029.7	2,977.9	0.00	0.00	0.00
8,500.0	90.45	183.59	6,501.6	-2,927.6	-1,036.0	3,076.9	0.00	0.00	0.00
8,600.0	90.45	183.59	6,500.9	-3,027.4	-1,042.2	3,175.9	0.00	0.00	0.00
8,700.0	90.45	183.59	6,500.1	-3,127.2	-1,048.5	3,274.9	0.00	0.00	0.00
8,800.0	90.45	183.59	6,499.3	-3,227.0	-1,054.8	3,373.9	0.00	0.00	0.00
8,900.0	90.45	183.59	6,498.5	-3,326.8	-1,061.0	3,472.9	0.00	0.00	0.00
9,000.0	90.45	183.59	6,497.7	-3,426.6	-1,067.3	3,571.8	0.00	0.00	0.00
9,100.0	90.45	183.59	6,496.9	-3,526.4	-1,073.5	3,670.8	0.00	0.00	0.00
9,200.0	90.45	183.59	6,496.1	-3,626.2	-1,079.8	3,769.8	0.00	0.00	0.00
9,300.0	90.45	183.59	6,495.3	-3,726.0	-1,086.1	3,868.8	0.00	0.00	0.00
9,400.0	90.45	183.59	6,494.5	-3,825.8	-1,092.3	3,967.8	0.00	0.00	0.00
9,500.0	90.45	183.59	6,493.7	-3,925.6	-1,098.6	4,066.8	0.00	0.00	0.00
9,600.0	90.45	183.59	6,492.9	-4,025.4	-1,104.9	4,165.8	0.00	0.00	0.00
9,700.0	90.45	183.59	6,492.1	-4,125.2	-1,111.1	4,264.8	0.00	0.00	0.00
9,800.0	90.45	183.59	6,491.3	-4,225.0	-1,117.4	4,363.8	0.00	0.00	0.00
9,900.0	90.45	183.59	6,490.6	-4,324.8	-1,123.6	4,462.8	0.00	0.00	0.00
10,000.0	90.45	183.59	6,489.8	-4,424.6	-1,129.9	4,561.8	0.00	0.00	0.00
10,100.0	90.45	183.59	6,489.0	-4,524.4	-1,136.2	4,660.8	0.00	0.00	0.00
10,200.0	90.45	183.59	6,488.2	-4,624.2	-1,142.4	4,759.8	0.00	0.00	0.00
10,300.0	90.45	183.59	6,487.4	-4,724.0	-1,148.7	4,858.8	0.00	0.00	0.00
10,400.0	90.45	183.59	6,486.6	-4,823.8	-1,155.0	4,957.8	0.00	0.00	0.00
10,500.0	90.45	183.59	6,485.8	-4,923.6	-1,161.2	5,056.8	0.00	0.00	0.00
10,600.0	90.45	183.59	6,485.0	-5,023.4	-1,167.5	5,155.8	0.00	0.00	0.00
10,700.0	90.45	183.59	6,484.2	-5,123.2	-1,173.7	5,254.8	0.00	0.00	0.00
10,800.0	90.45	183.59	6,483.4	-5,223.0	-1,180.0	5,353.8	0.00	0.00	0.00
10,900.0	90.45	183.59	6,482.6	-5,322.8	-1,186.3	5,452.8	0.00	0.00	0.00
11,000.0	90.45	183.59	6,481.8	-5,422.6	-1,192.5	5,551.8	0.00	0.00	0.00
11,100.0	90.45	183.59	6,481.0	-5,522.4	-1,198.8	5,650.8	0.00	0.00	0.00
11,200.0	90.45	183.59	6,480.2	-5,622.2	-1,205.1	5,749.8	0.00	0.00	0.00
11,300.0	90.45	183.59	6,479.5	-5,722.0	-1,211.3	5,848.8	0.00	0.00	0.00
11,400.0	90.45	183.59	6,478.7	-5,821.8	-1,217.6	5,947.8	0.00	0.00	0.00
11,483.9	90.45	183.59	6,478.0	-5,905.6	-1,222.8	6,030.9	0.00	0.00	0.00
TD at 11484.0 - BHL 460'FSL, 659'FWL, SEC.25									

Targets									
Target Name	Dip Angle (°)	Dip Dir. (°)	TVD (ft)	+N/-S (ft)	+E/-W (ft)	Northing (ft)	Easting (ft)	Latitude	Longitude
BHL 460'FSL, 659'FW - hit/miss target - Shape	0.00	0.00	6,478.0	-5,905.6	-1,223.0	1,442,362.02	3,371,154.46	40.540012	-104.164550
- plan misses target center by 0.1ft at 11483.9ft MD (6478.0 TVD, -5905.6 N, -1222.8 E)									
- Point									
LPL 460'FNL, 659'FW - hit/miss target - Shape	0.00	0.00	6,513.0	-1,497.3	-946.2	1,446,773.83	3,371,364.54	40.552112	-104.163555
- plan hits target center									
- Point									
SHL 1036'FSL, 1551'I - hit/miss target - Shape	0.00	0.00	1.0	0.0	0.0	1,448,285.26	3,372,288.01	40.556222	-104.160150
- plan hits target center									
- Point									

Database:	EDMNEW	Local Co-ordinate Reference:	Well Terrell 25-761-0157BH
Company:	Caerus Oil and Gas LLC	TVD Reference:	WELL @ 5048.0ft (RKB - 30')
Project:	SEC.24-T7N-R61W	MD Reference:	WELL @ 5048.0ft (RKB - 30')
Site:	Terrell N 24 761 Pad Sec.24-T7N-R61W	North Reference:	True
Well:	Terrell 25-761-0157BH	Survey Calculation Method:	Minimum Curvature
Wellbore:	Wellbore #1		
Design:	Plan #1 (7-07-15)		

Casing Points					
Measured Depth (ft)	Vertical Depth (ft)	Name	Casing Diameter (")	Hole Diameter (")	
7,066.9	6,513.0	7"	7	7-1/2	

Formations						
Measured Depth (ft)	Vertical Depth (ft)	Name	Lithology	Dip (°)	Dip Direction (°)	
3,514.0	3,458.0	Richard_SD				
4,539.6	4,453.0	Sussex				
6,419.5	6,248.0	Sharon Springs		0.00		
6,561.5	6,348.0	Niobrara		0.00		
6,610.9	6,378.0	NBRR_A		0.00		
6,656.0	6,403.0	NBRR_A_Marl		0.00		
6,834.7	6,478.0	NBRR_B		0.00		
7,066.9	6,513.0	NBRR_B_Marl		0.00		

Plan Annotations					
Measured Depth (ft)	Vertical Depth (ft)	Local Coordinates			
		+N/-S (ft)	+E/-W (ft)	Comment	
700.0	700.0	0.0	0.0	KOP - Start Build 1.00	
2,102.1	2,088.2	-119.9	-121.5	Start 3964.3 hold at 2102.1 MD	
6,066.4	5,934.3	-794.8	-804.9	Start DLS 8.00 TFO -42.56	
7,066.9	6,513.0	-1,497.3	-946.2	Start 4417.1 hold at 7066.9 MD	
11,484.0	6,478.0	-5,905.6	-1,222.8	TD at 11484.0	