



Scale: 5" / 100'
Measured Depth Log

Well Name MATRIX P-29HC

Location SEC. 29-T6N-R65W

State COLORADO

County WELD

Country USA

Rig Number FRONTIER 8

API Number 0512340703

Field GREELEY

Region DJ BASIN

Spud Date 1/1/2015

Surface Coordinates 555' FSL 2263' FWL

Bottom Hole Coordinates 470' FNL 1137FEL

Ground Elevation 4708'

K.B. Elevation 4730.5'

Logged Interval 6000'

Formation CODELL

Type of Drilling Fluid FWLSNF

Operator

Company Bayswater Exploration and Production LLC.

Address 730 17th Street, Suite 610
Denver, CO 80202

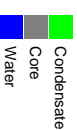
Geologist

Name ROBERT DAVIS, LISA KANT

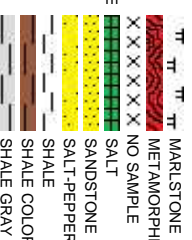
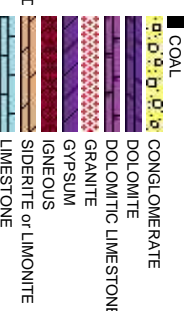
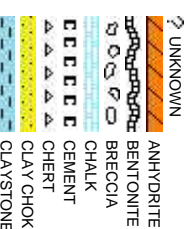
Company COLUMBINE LOGGING, INC.

Address 602 S. LIPAN ST.
DENVER, CO 80223

Zone Color Coding



Rock Types



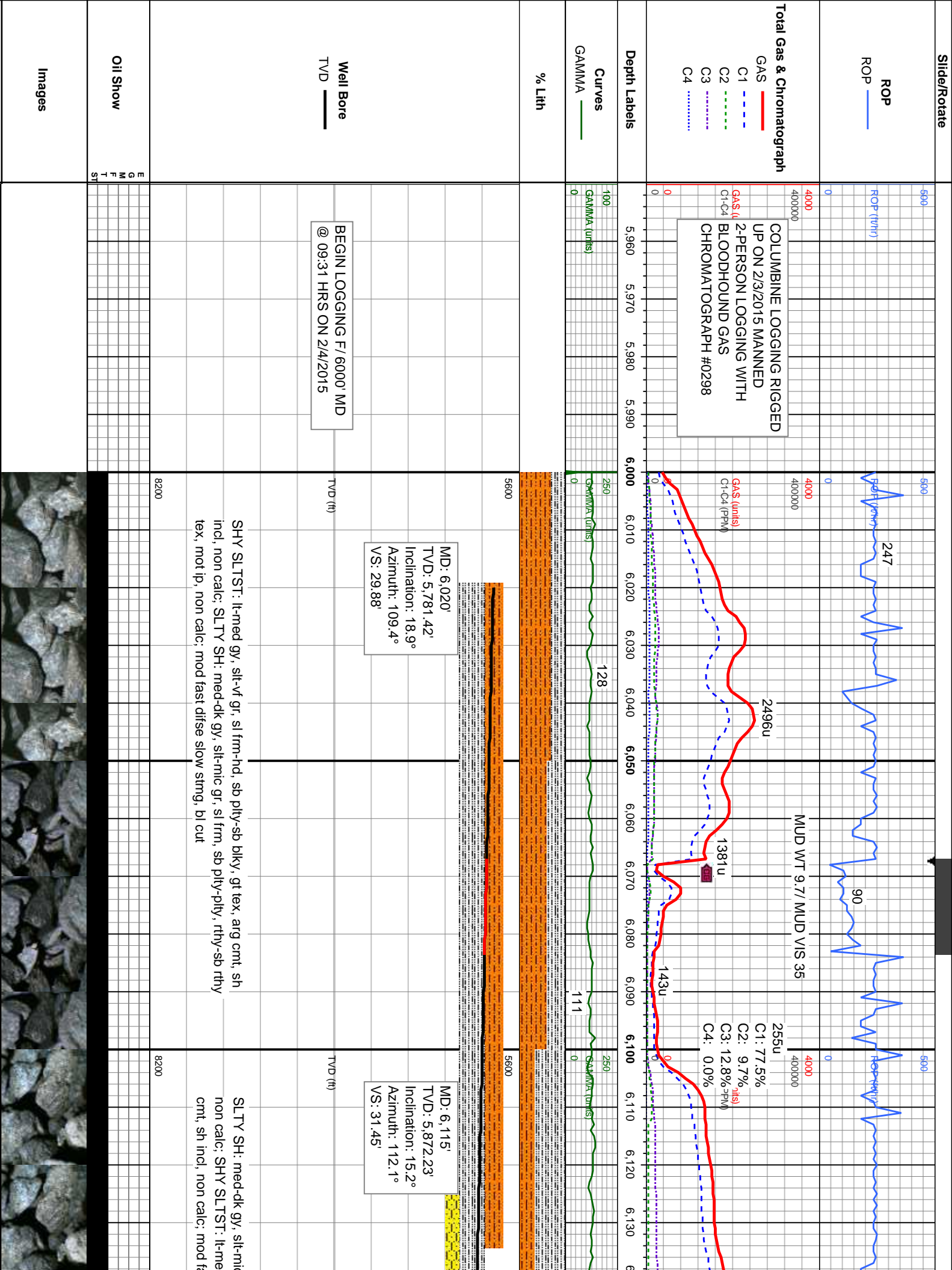
Accessories

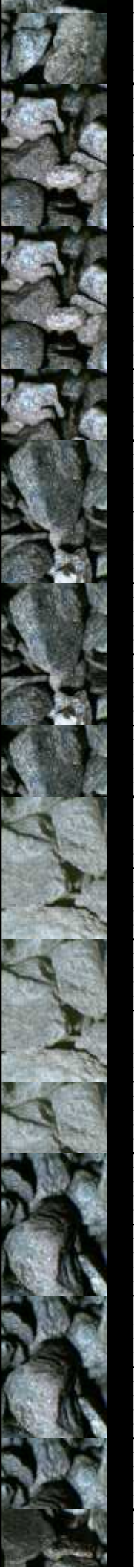
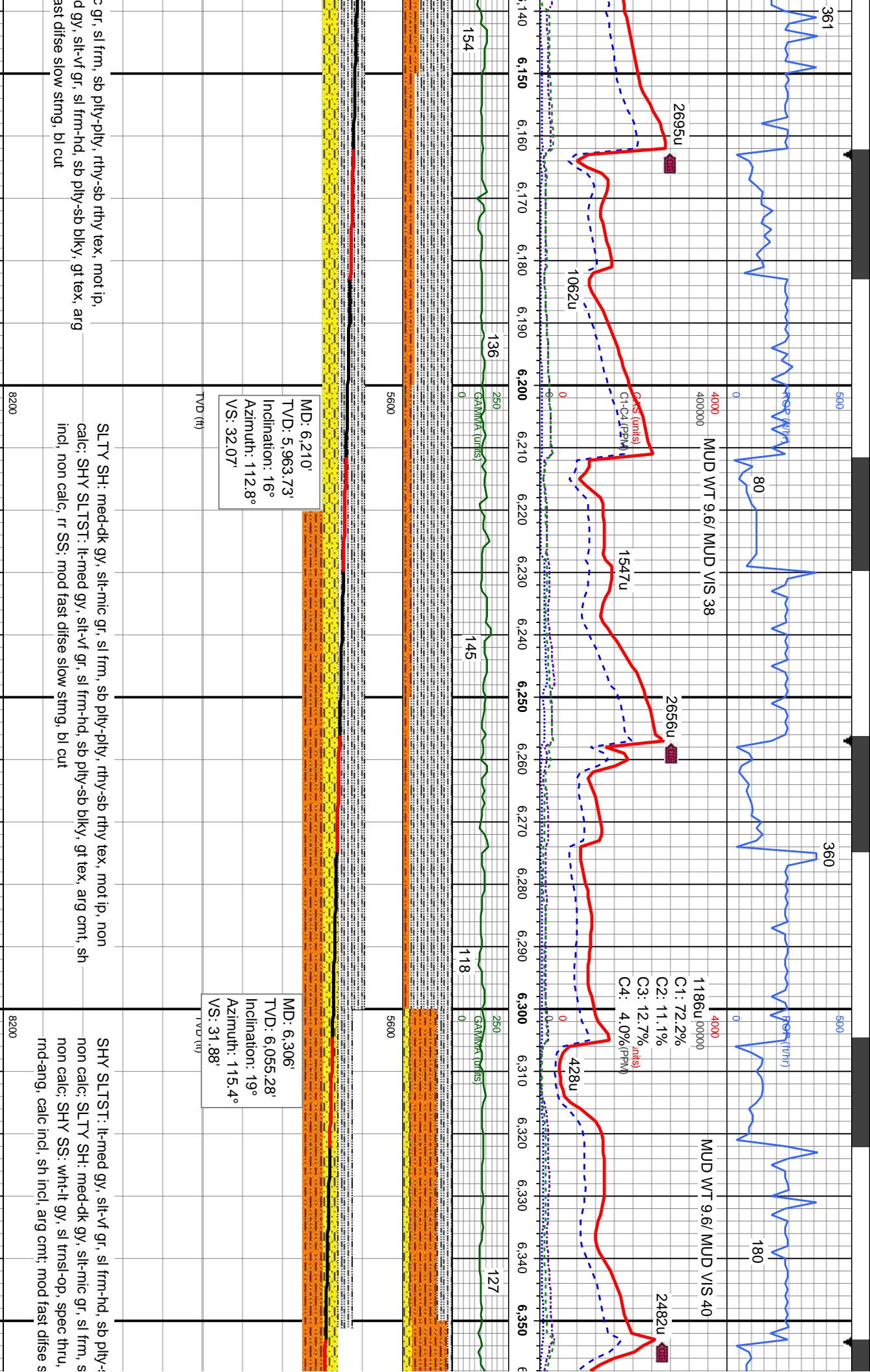
Fossils	GASTROPOD	ARGILLITE GRAIN	HEAVY MINERAL	Stringer
INOCERAMUS	B BENTONITE	K KAOLIN	ANHYDRITE STRINGER	
ALGAE	O OOLITE	M MARCASTITE	BENTONITE STRINGER	
AMPHIPORA	O OSTRACOD	T MARLSTONE	COAL STRINGER	
BELEMNITE	P PELLET	M MICACEOUS	DOLOMITE STRINGER	
BIOCLASTIC	P PISOLUTE	MINERAL CRYSTALS	GYPSUM STRINGER	
BRACHIOPOD	PLANT REMAINS	N NODULES	LIMESTONE STRINGER	
BRYOZOA	PLANT SPORES	PHOSPHATE PELLETS	MARLSTONE (CALC) STRG	
CEPHALOPOD	S SCAPHOPOD	P PYRITE	MARLSTONE (DOL) STRG	
CORAL	D DOLOMITIC	S SALT CAST	SANDSTONE STRINGER	
CRINOID	F FELDSPAR	S SANDY	SHALE STRINGER	
ECHINOID	F FERRUGINOUS PELLET	S SIDERITE		
FISH	F FERRUGINOUS	S SILICEOUS		
FORAMINIFERA	A ANHYDRITIC	S SILTY		
F FOSSIL	A ARGILLACEOUS	T TUFFACEOUS		
	Minerals			

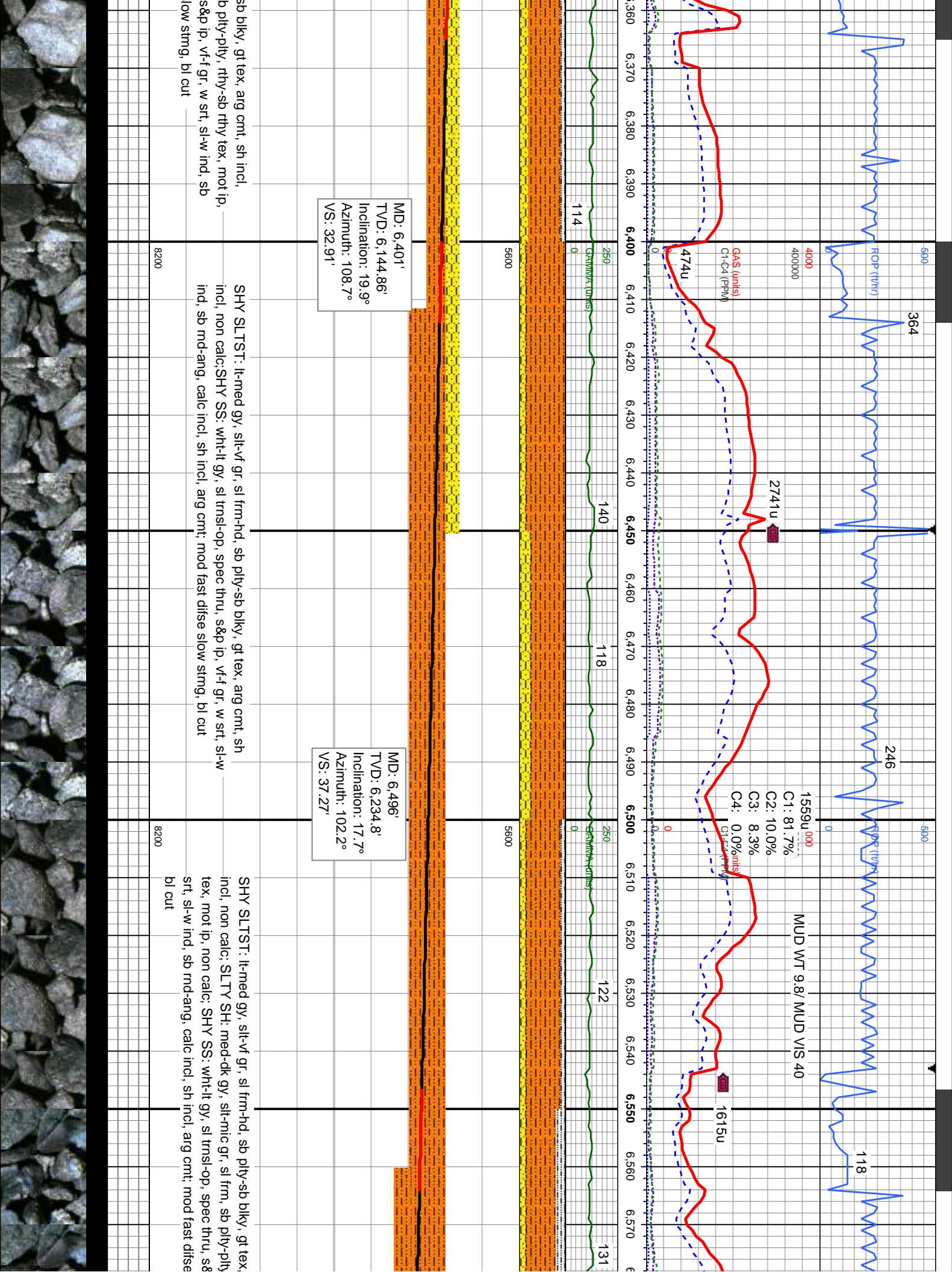
Other Symbols

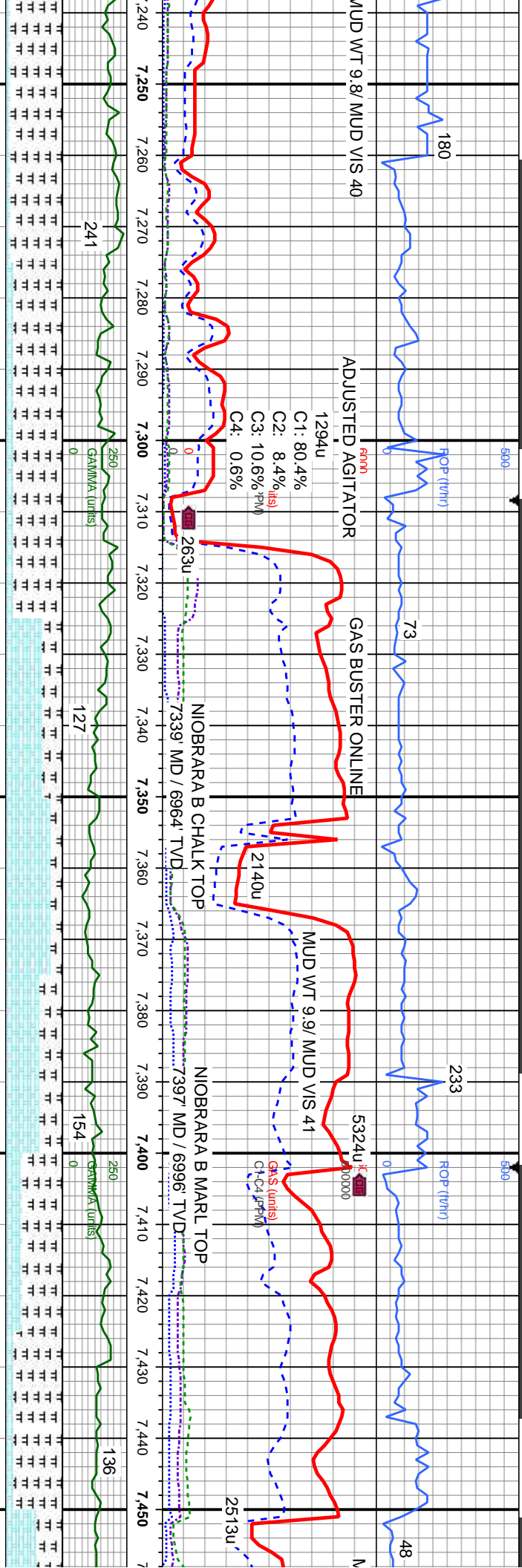
Oil Show	P PINPOINT	DST INTERVAL	WIRELINE TESTED - LEFT	E EARTHY
V VUGGY	FAULT	WIRELINE TESTED - RT	FX FINELYXLN	
Engineering	FORMATION TOP	DRILL STEM TEST	MN DEPTH	GS GRAINSTONE
D DEAD	GAS SHOW	MN DEPTH	L LITHOGRAPHIC	MX MICROXLN
E EVEN	OIL SHOW			
Q QUESTIONABLE	BIT	Rounding	MS MUDSTONE	
S SPOTTED STAINING	C CONNECTION (UP)			
Porosity	C CONNECTION (DOWN)	A ANGULAR	PS PACKSTONE	
E EARTHY	C CONNECTION GAS	N NORMAL FAULT	S SUBANG	WS WACKESTONE
F FENESTRAL	T TRIP GAS	O OVERTURNED STRATA	S SUBANG	
F FRACTURE	T TRIP GAS (LEFT)	R REVERSE FAULT	S SUBANG	Sorting
I INTERCRYSTALLINE	D DOWN TIME GAS	C CASING		M MODERATE
I INTEROOLITIC	D DOWN TIME GAS (LEFT)	S SIDEWALL CORE (LEFT)		P POOR
M MOLDIC	C CORE - LOST	S SIDEWALL CORE (RIGHT)		W WELL
O ORGANIC	C CORE - RECOVERED	S SLIDE		
		S SURVEY		
		C CRYPTOXLN		
		Textures		

	SHALY SANDSTONE
	SHALY SILTSTONE
	SILTY SHALE
	SILTSTONE
	TUFF
	WELDED TUFF









gr, sl
lt-med
thy-sm
mod

MRLST: med-dk gy, mot-spec, slt gr, sl
frm, sb pty-pty, gt tex, calc; CHK: lt-med
gy, str, sb pty-blky, brit, sl sft, sb rthy-sm
tex, v calc; mod fast difse mod
stmg-milky, bri bl-wh cut

5600

MRLST: med-dk gy, mot-spec, slt gr, sl
frm, sb pty-pty, gt tex, calc; CHK: lt-med
gy, str, sb pty-blky, brit, sl sft, sb rthy-sm
tex, v calc, com fos incl; mod fast difse
fast stmg-milky, bri bl-wh cut

CHK: lt-med gy, sft-sl frm, brit, sb pty-sb
blky, sm tex, mot-str, v calc, fos incl; tr fos
frags, tr pyr; MRLST: med-dk gy, slt gr, sl
frm-hd, pty-sb blky, rthy-gt tex, calc, com
fos incl; mod fast difse fast stmg-milky,
bri bl-wh cut

5600

MRLST: med-dk gy, slt gr, sl frm-hd,
pty-sb blky, rthy-gt tex, calc, fos incl; CHK:
lt-med gy, sft-sl frm, brit, sb pty-sb blky,
sm tex, mot-str, v calc, fos incl; com fos
frags, tr pyr, tr bent; mod fast difse fast
stmg-milky, bri bl-wh cut

CHK:
blky, s
gy-blk
calc, r
stmg-

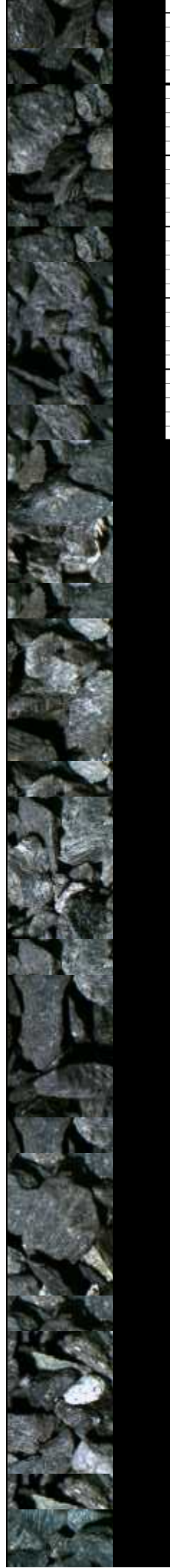
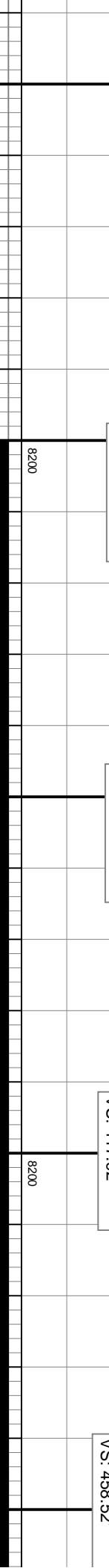
MD: 7,258'
TVD: 6,912.12'
Inclination: 45.6°
Azimuth: 18.7°
VS: 305.81'

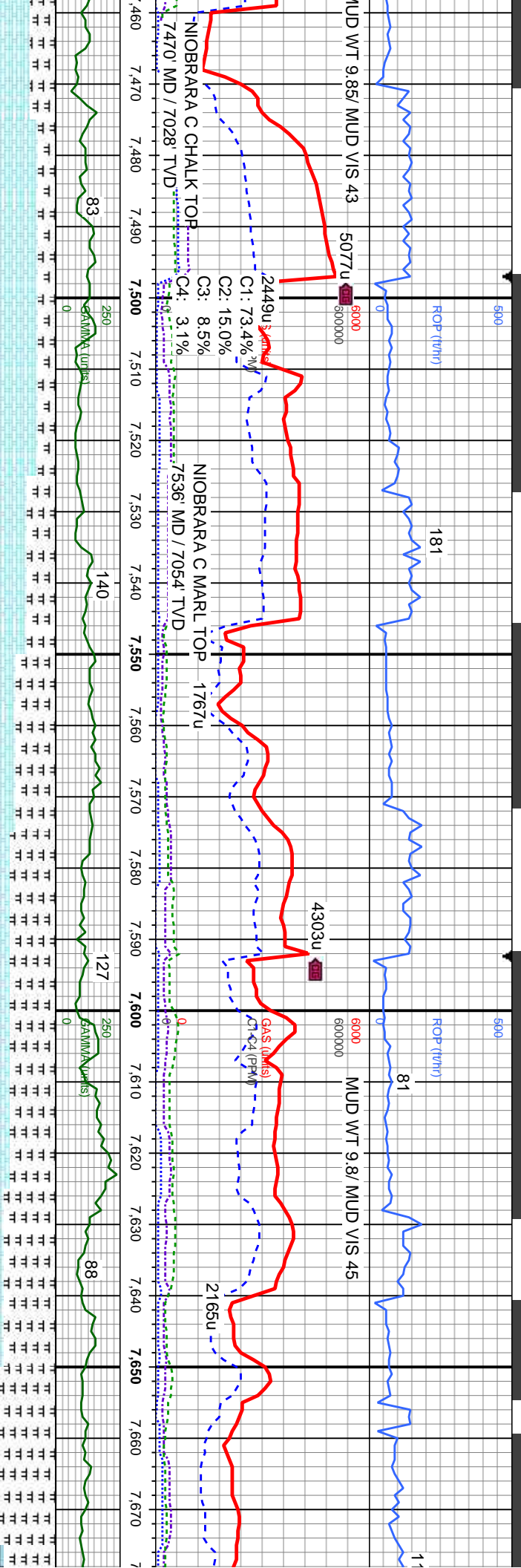
MD: 7,306'
TVD: 6,944.39'
Inclination: 49.9°
Azimuth: 15.7°
VS: 341.08'

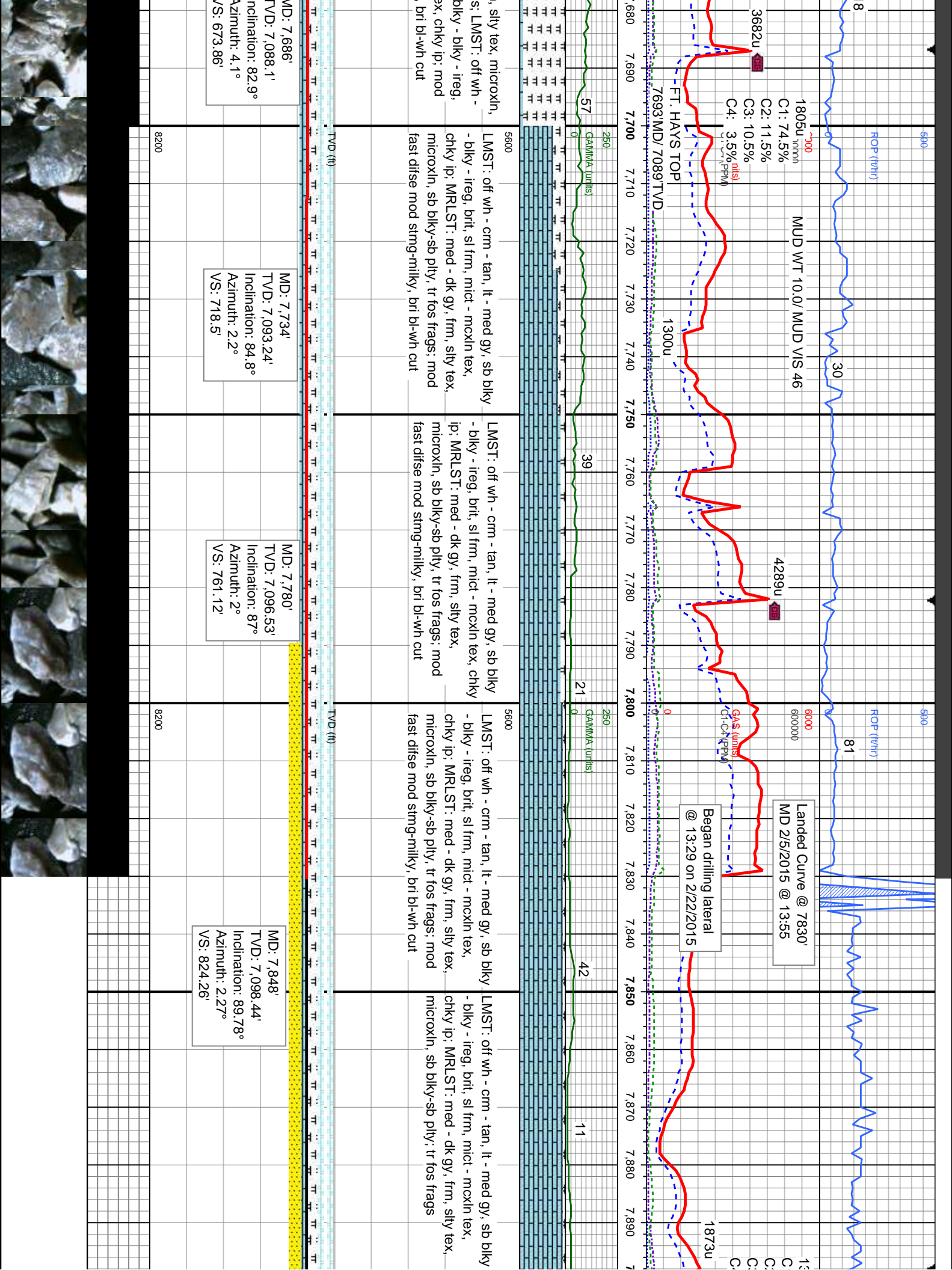
MD: 7,363'
TVD: 6,972.83'
Inclination: 55.6°
Azimuth: 13.6°
VS: 377.99'

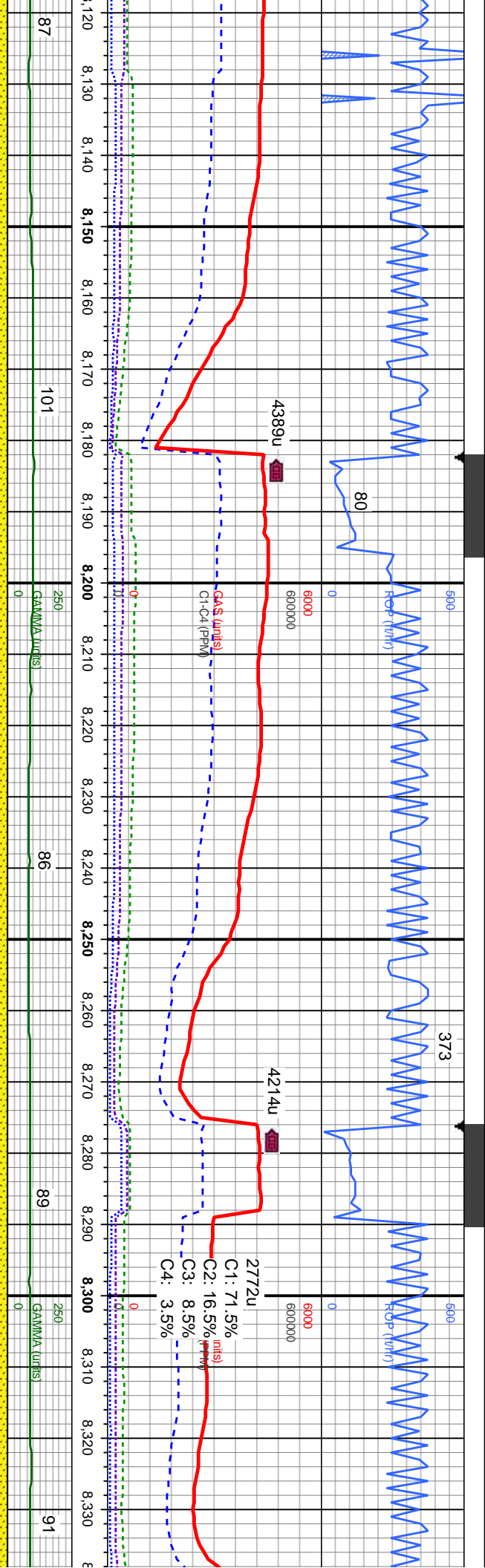
MD: 7,401'
TVD: 6,998.12'
Inclination: 60.8°
Azimuth: 10.8°
VS: 417.92'

MD: 7,448'
TVD: 7,019.45'
Inclination: 65.2°
Azimuth: 8.7°
VS: 458.52'

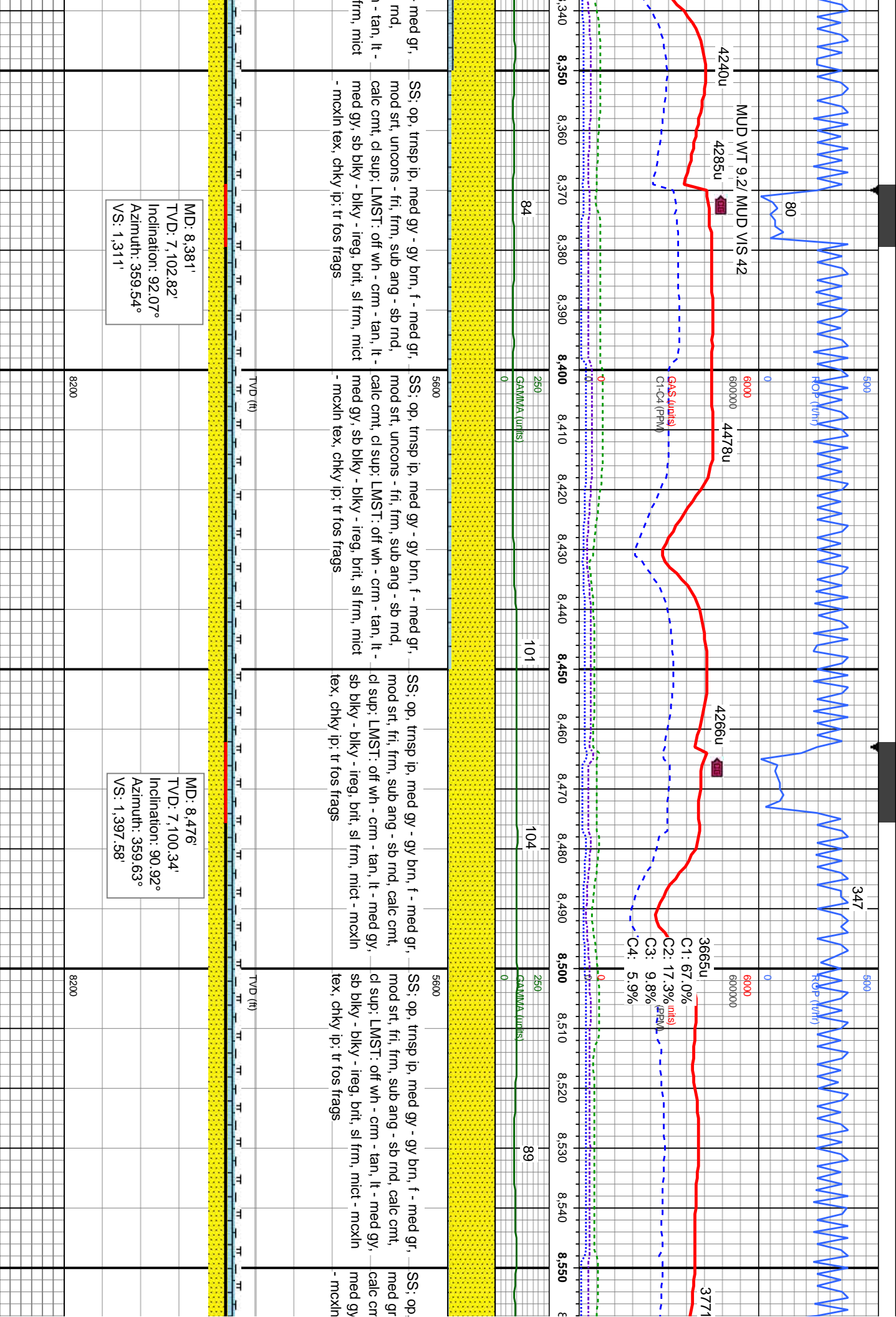


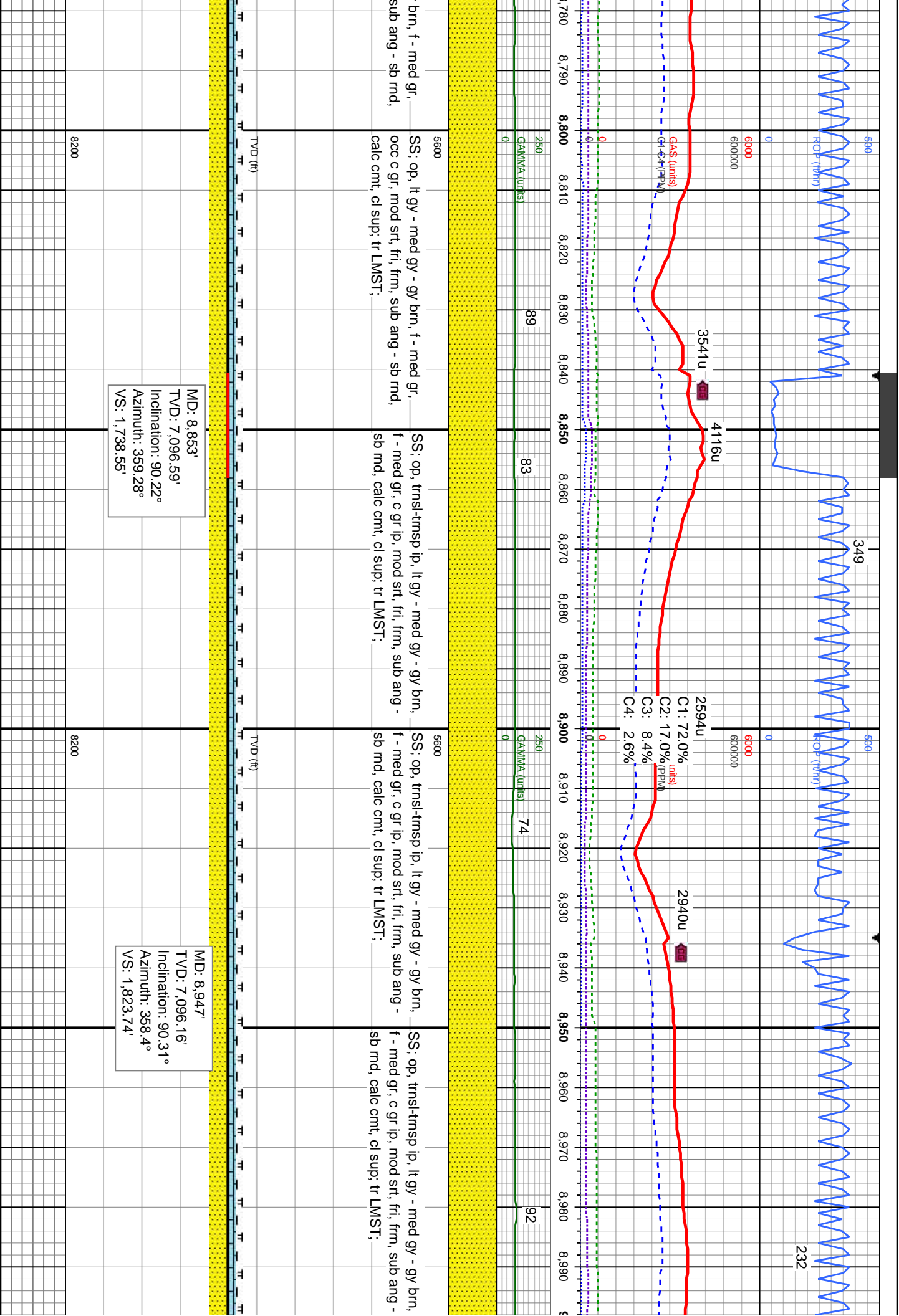






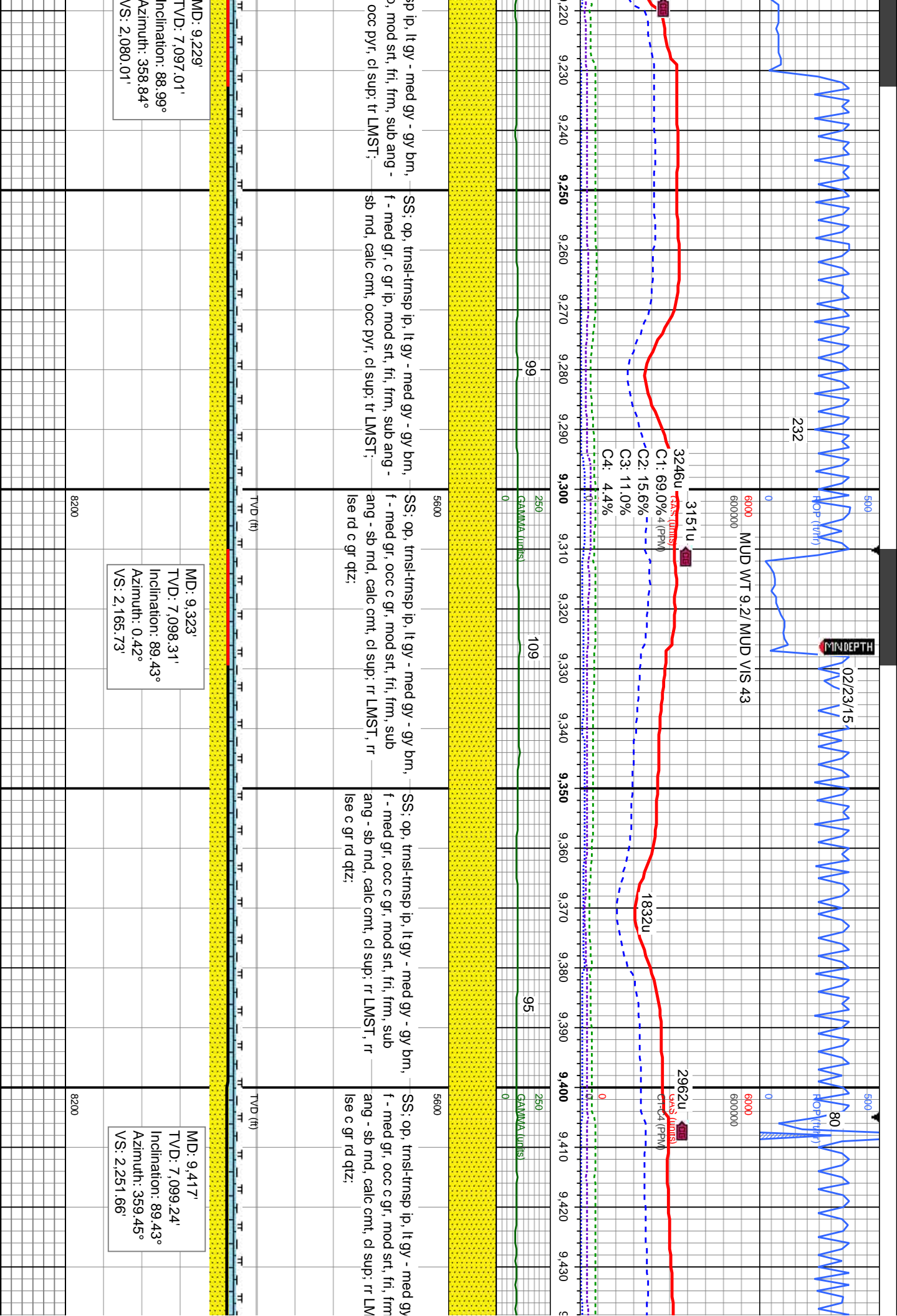
med gy - gy brn, med - c gr, od srt, unconcs - fri, frm, sub cmt, cl sup; LMST: off wh med gy, sb blkly - blkly - ireg, - mcnln tex, chky ip; tr fos		SS; op, trnsip ip, lt gy - med gy - gy brn, med - c gr, occ f gr, sl p - mod srt, unconcs - fri, frm, sub ang - sb rnd, calc cnt, cl sup; LMST: off wh - ctm - tan, lt - med gy, sb blkly - blkly - ireg, brit, sl frm, mict - mcnln tex, chky ip; tr fos frags		SS; op, trnsip ip, med gy - gy brn, f - med gr, occ c, mod srt, fri, frm, sub ang - sb rnd, calc cnt, cl sup; LMST: off wh - ctm - tan, lt - med gy, sb blkly - blkly - ireg, brit, sl frm, mict - mcnln tex, chky ip; tr fos frags	
MD: 8,193' TVD: 7,103.4' Inclination: 89.08° Azimuth: 358.84° VS: 1,139.79'		MD: 8,287' TVD: 7,104.33' Inclination: 89.78° Azimuth: 359.72° VS: 1,225.28'			
8200		8200		8200	

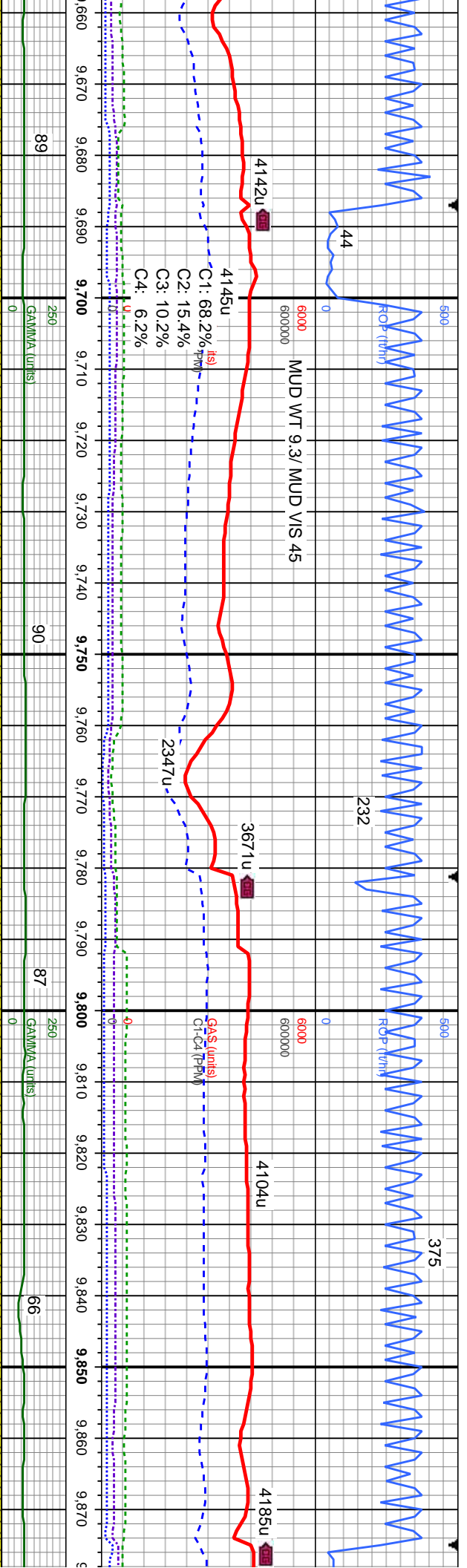




MD: 8,853'
TVD: 7,096.59'
Inclination: 90.22°
Azimuth: 359.28°
VS: 1,738.55'

MD: 8,947'
TVD: 7,096.16'
Inclination: 90.31°
Azimuth: 358.4°
VS: 1,823.74'





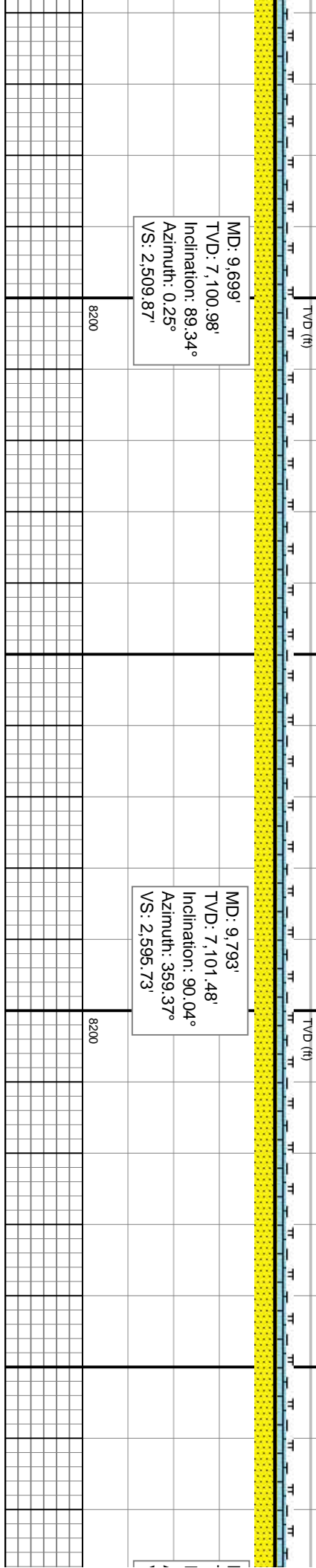
SS: op, tmsp ip, lt gy - med gy - gy brn, f - med gr, mod srt, fri, frm, sub ang - sb rnd, calc cmt, cl sup; LMST: off wh - crm - tan, lt - med gy, sb blkly - blkly - ireg, brit, sl frm, mict - mcoln tex

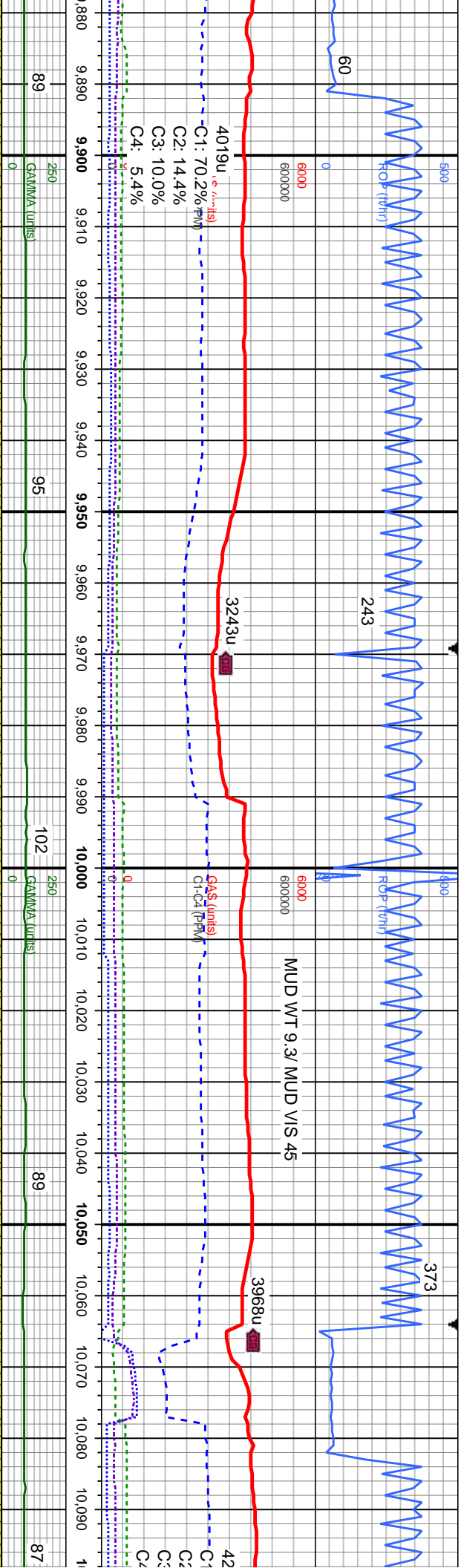
SS: op, tmsp ip, lt gy - med gy - gy brn, f - med gr, mod srt, fri, frm, sub ang - sb rnd, calc cmt, cl sup; LMST: off wh - crm - tan, lt - med gy, sb blkly - blkly - ireg, brit, sl frm, mict - mcoln tex

SS: op, tmsp ip, lt gy - med gy - gy brn, f - med gr, mod srt, fri, frm, sub ang - sb rnd, calc cmt, cl sup; LMST: off wh - crm - tan, lt - med gy, sb blkly - blkly - ireg, brit, sl frm, mict - mcoln tex

MD: 9,699'
TVD: 7,100.98'
Inclination: 89.34°
Azimuth: 0.25°
VS: 2,509.87'

MD: 9,793'
TVD: 7,101.48'
Inclination: 90.04°
Azimuth: 359.37°
VS: 2,595.73'





gy - gy brn, f -
sub ang - sb md,
ff wh - crm - tan, lt -
eg, brit, sl frm, mict

SS: op, trnsL-trnsp ip, med gy - gy brn, occ
gy, v-f gr, occ med gr, mod w srt, fri, frm,
sub ang - sb md, calc cnt, cl sup, tr LMST

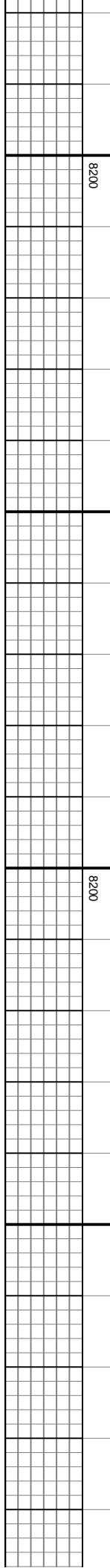
SS: op, trnsL-trnsp ip, med gy - gy brn, occ lt
gy, v-f gr, occ med gr, mod w srt, fri, frm,
sub ang - sb md, calc cnt, cl sup, tr LMST

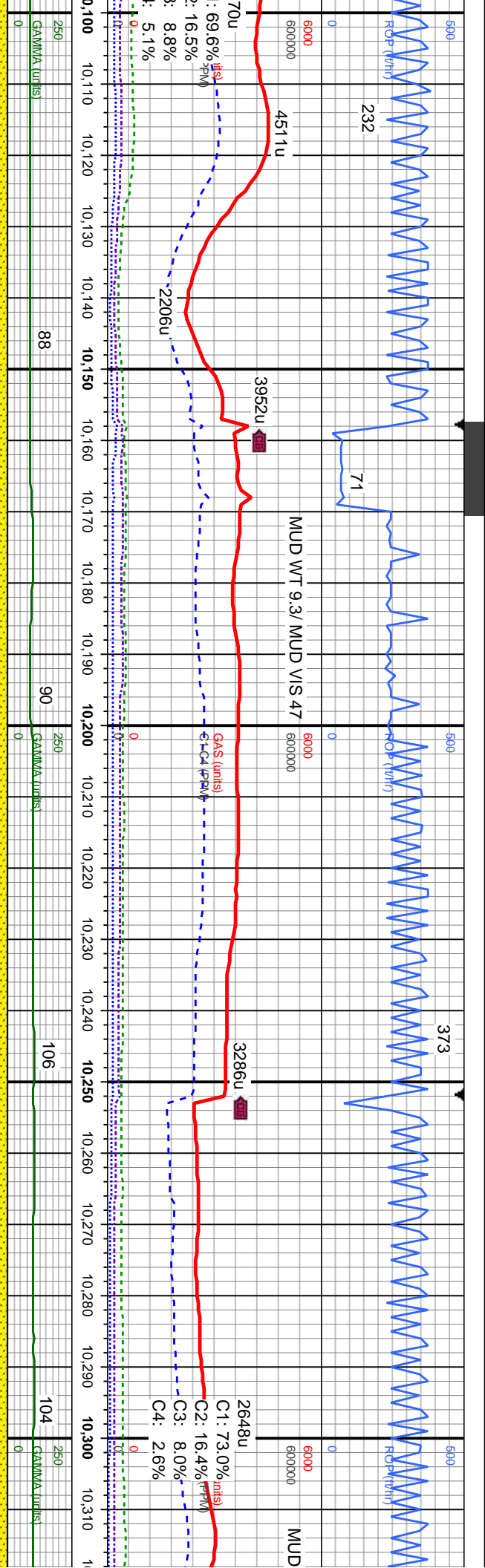
SS: op, trnsL-trnsp ip, med gy - gy brn, occ
lt gy, v-f gr, occ med gr, mod w srt, fri, frm,
sub ang - sb md, calc cnt, cl sup, tr LMST

MD: 9.887'
TVD: 7,101.99'
Inclination: 89.34°
Azimuth: 0.33°
VS: 2,681.6'

MD: 9.981'
TVD: 7,102.43'
Inclination: 90.13°
Azimuth: 359.63°
VS: 2,767.57'

MD: 10.075'
TVD: 7,102.65'
Inclination: 89.6°
Azimuth: 0.25°
VS: 2,853.51'



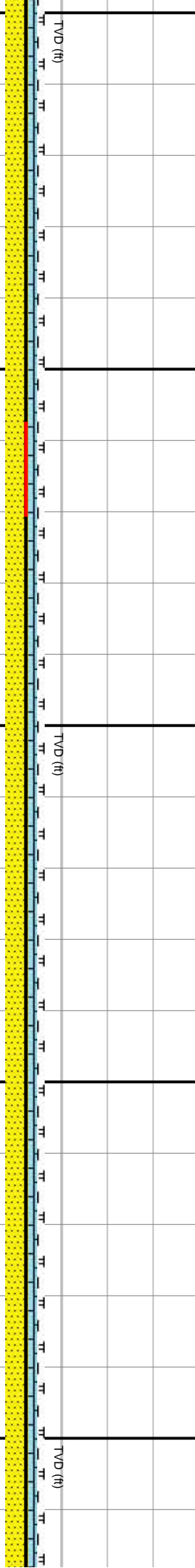


SS: op, trnsI-trnsp ip, med gy - gy brn, vf-f gr, occ med gr, mod w srt, fri, frm, sub ang - sb rnd, calc cnt, cl sup

SS: op, trnsI-trnsp ip, med gy - gy brn, vf-f gr, occ med gr, mod w srt, fri, frm, sub ang - sb rnd, calc cnt, cl sup

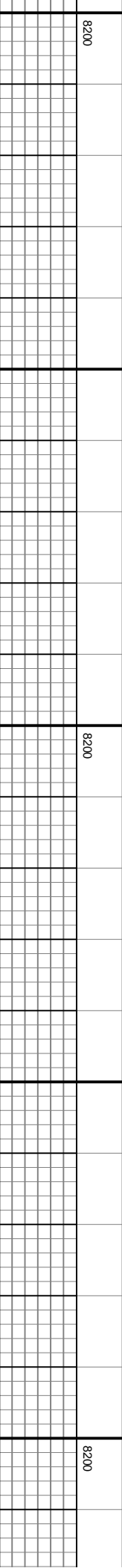
SS: op, trnsI-trnsp ip, med gy - gy brn, vf-f gr, occ med gr, mod w srt, fri, frm, sub ang - sb rnd, calc cnt, cl sup

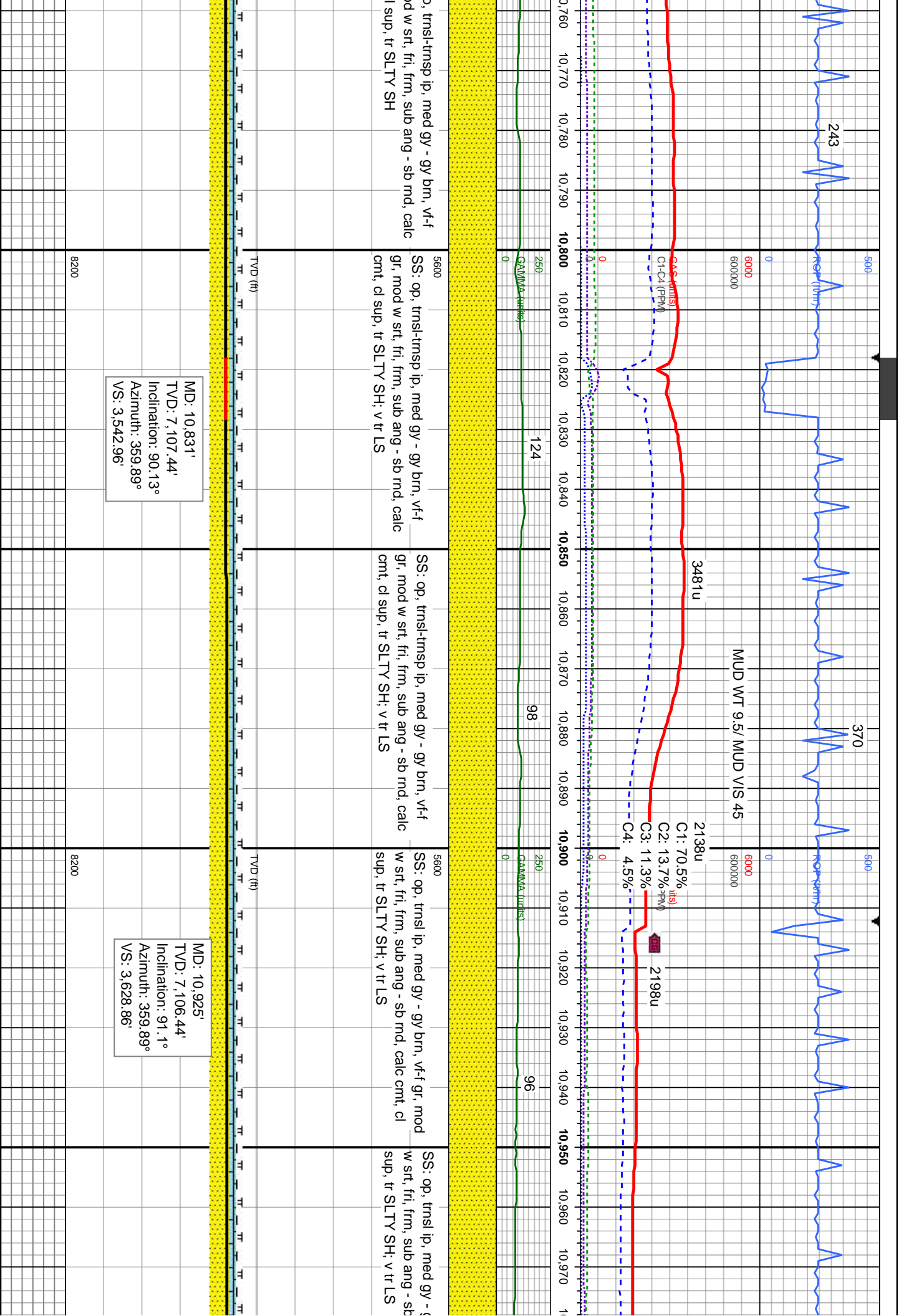
SS: op, trnsI-trnsp ip, med gy - gy brn, vf-f gr, occ med gr, mod w srt, fri, frm, sub ang - sb rnd, calc cnt, cl sup

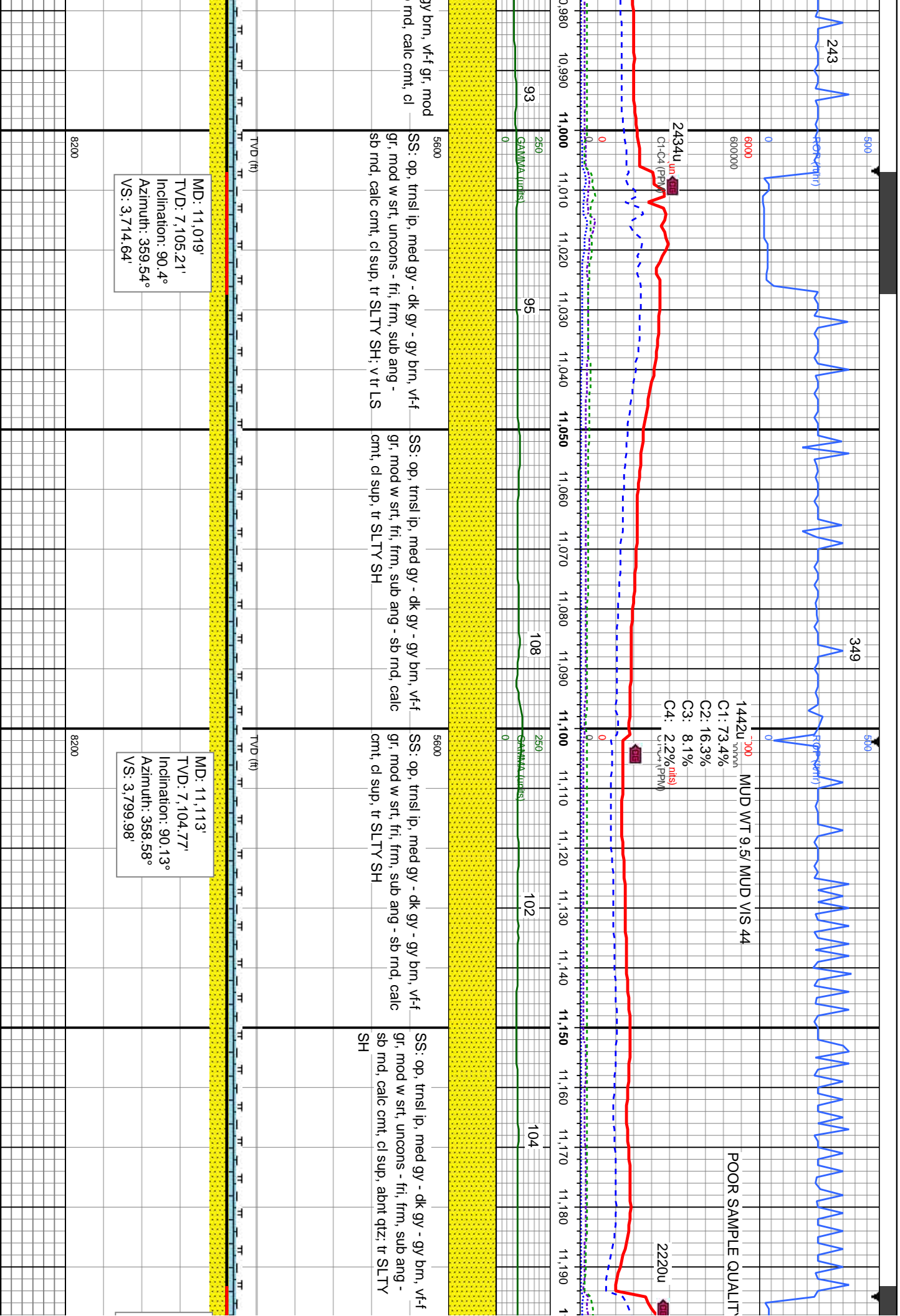


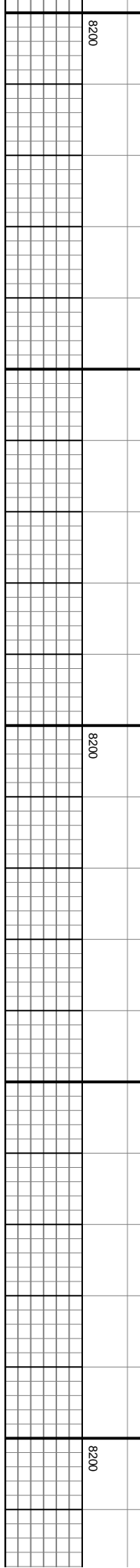
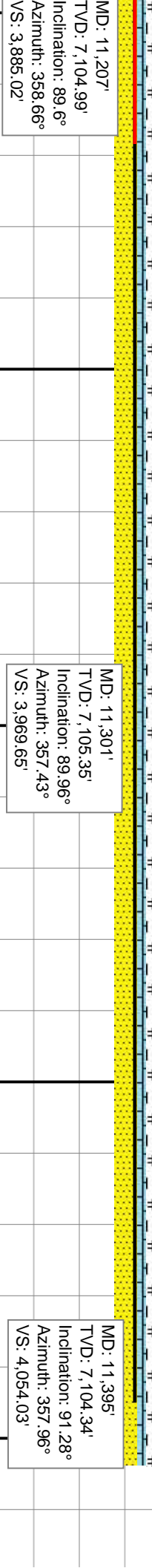
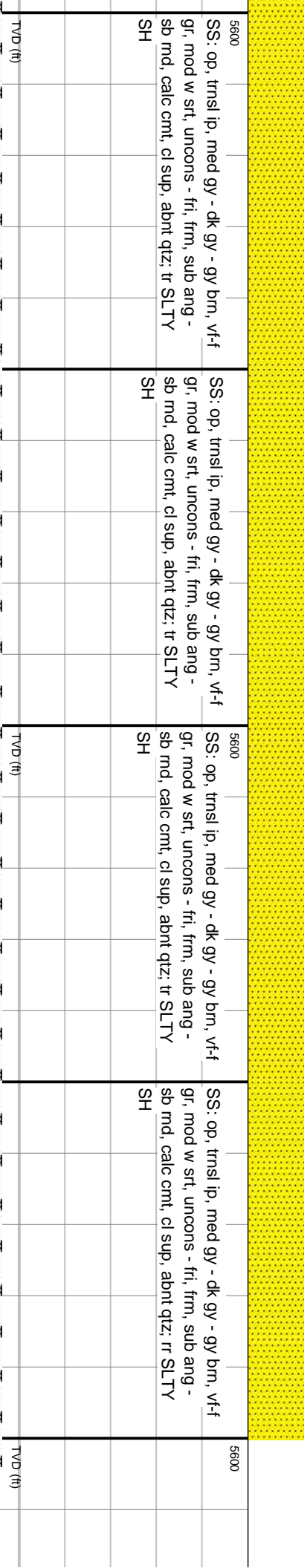
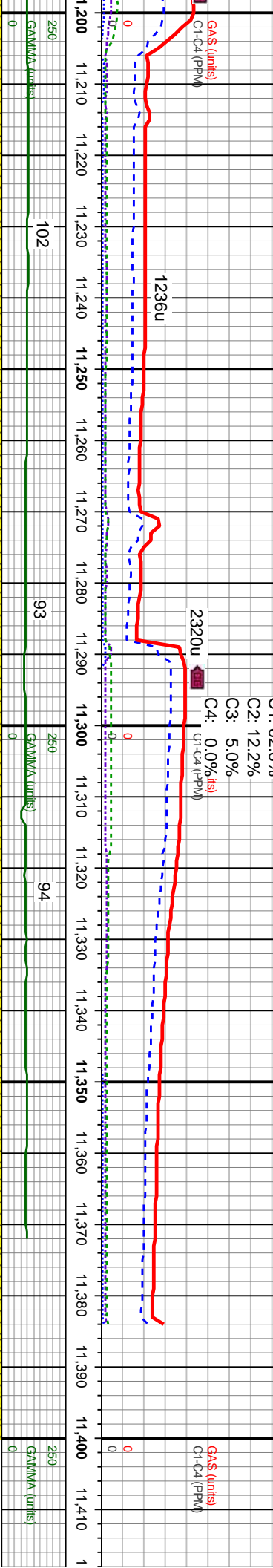
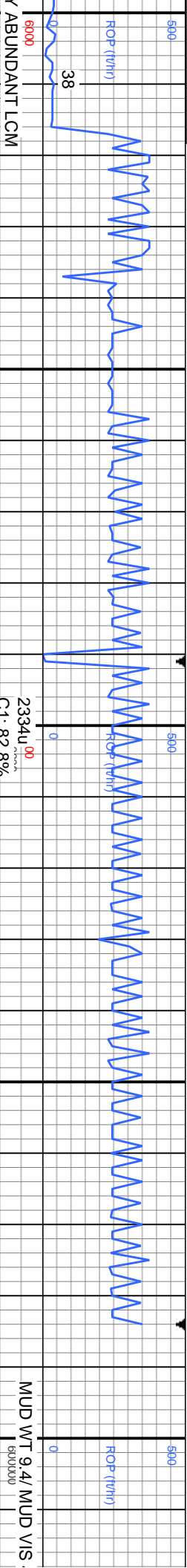
MD: 10,170'
TVD: 7,104.18'
Inclination: 88.55°
Azimuth: 0.33°
VS: 2,940.58'

MD: 10,264'
TVD: 7,105.55'
Inclination: 89.78°
Azimuth: 359.89°
VS: 3,026.62'









MUD WT 9.4/ MUD VIS

GAs (units)
C1-C4 (ppm)

0

250

GAs (units)
C1-C4 (ppm)

0

250

GAs (units)
C1-C4 (ppm)

0

250

GAs (units)
C1-C4 (ppm)

0

250

GAs (units)
C1-C4 (ppm)

0

250

