

COMPANY MAN

HALLIBURTON

iCem[®] Service

CATAMOUNT ENERGY PARTNERS LLC-EBUS

For:

Date: Tuesday, March 31, 2015

CARPENTER 32-6-3 #1S

CARPENTER 32-6-3 #1S

CTAMOUNT

Job Date: Tuesday, March 31, 2015

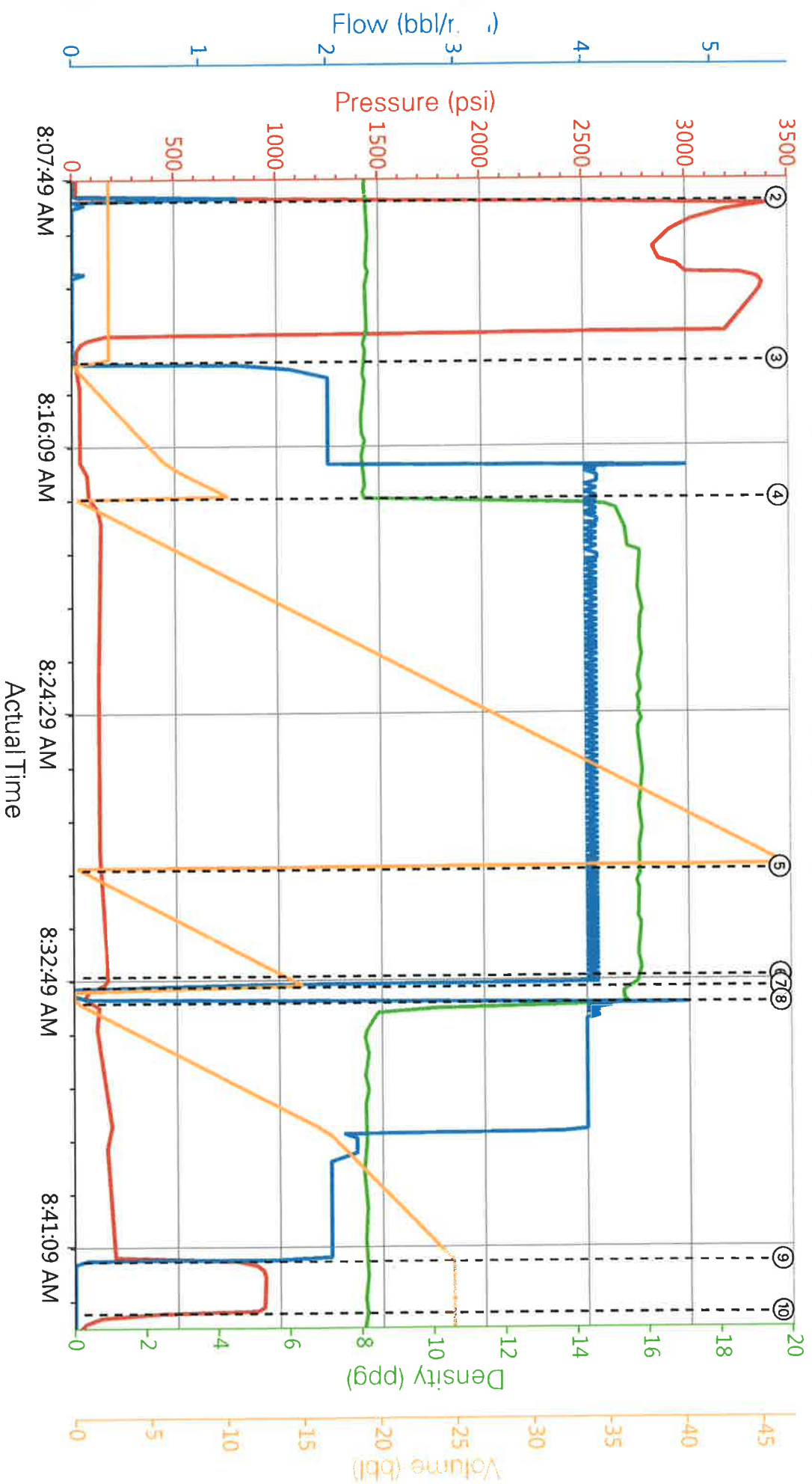
Sincerely,



1.0 Real-Time Job Summary

1.1 Job Event Log											
Type	Seq. No.	Activity	Graph Label	Date	Time	Source	Pass-Side Pump Pressure (psi)	Downhole Density (ppg)	Pass-Side Pump Rate (bbl/min)	PS Pmp Stg Tot (bbl)	Comments
Event	1	Start Job	Start Job	3/31/2015	08:02:34	COM5	7.00	8.14	0.00	0.0	
Event	2	Pressure Test	Pressure Test	3/31/2015	08:08:36	USER	3398.00	8.22	0.00	2.4	PRESSURE TEST GOOD TO 3200 PSI
Event	3	Pump Spacer	Pump Spacer	3/31/2015	08:13:37	USER	18.00	8.14	1.40	0.1	PUMPED 10 BBLS H2O
Event	4	Pump Lead Cement	Pump Lead Cement	3/31/2015	08:17:54	USER	85.00	12.55	4.10	0.7	240 SKS 1.18 CUFT/SK 5.24 GAL/SK = 50.4 BBLS @ 15.8# 30 BBLS H2O REQ
Event	5	Pump Tail Cement	Pump Tail Cement	3/31/2015	08:29:29	USER	129.00	15.80	4.10	1.0	60 SKS 1.19 CUFT/SK 5.26 GAL/SK 12.7 BBLS @ 15.8# 7.5 BBLS H2O REQ
Event	6	Cement Returns to Surface	Cement Returns to Surface	3/31/2015	08:32:48	USER	163.00	15.73	4.10	14.4	CALCULATED 30 BBLS OF CEMENT BACK TO SURFACE, ACTUALLY CIRCULATED 33 BBLS OF CEMENT BACK TO SURFACE
Event	7	Shutdown	Shutdown	3/31/2015	08:33:09	USER	69.00	15.34	0.00	0.0	SHUTDOWN DROP PLUG
Event	8	Pump Displacement	Pump Displacement	3/31/2015	08:33:38	USER	126.00	13.03	4.10	0.8	CALCULATED 23.9 BBLS TO DISLACE PLUG, PLUG BUMPED @ 24.8 BBLS TANK TO TANK MARK TO MARK
Event	9	Bump Plug	Bump Plug	3/31/2015	08:41:43	USER	882.00	8.12	0.00	24.8	CALCULATED 148 PSI TO LAND PLUG, PLUG BUMPED @ 225 PSI PRESSURED UP TO 930 PSI
Event	10	Check Floats	Check Floats	3/31/2015	08:43:20	USER	167.00	8.13	0.00	24.8	CHECK FLOATS FLOATS HELD, .25 BBLS BACK
Event	11	End Job	End Job	3/31/2015	08:46:14	COM5	12.00	8.21	0.00	0.0	

CATAMOUNT CARPENTER 32-6-3 #1S, SURFACE



PS Pump Press (psi) DH Density (ppg) PS Pump Rate (bbl/min) PS Pmp Stg Tot (bbl)

Customer : CATAMOUNT ENERGY PARTNERS LLC-EBUS

Job Date : 3/31/2015 6:10:06 AM

Well : CARPENTER 32-6-3 #1S

Representative : LEMONT JOJOLA

Sales Order # : 902284900

COMPANY MAN : DALE ARNOLD

Created: 2015-03-31 01:34:54, Version: 4.1.107

[Edit](#)

The Road to Excellence Starts with Safety

Sold To #: 367830	Ship To #: 3657917	Quote #: 0022003152	Sales Order #: 0902284900
Customer: CATAMOUNT ENERGY PARTNERS LLC-EBUS		Customer Rep:	
Well Name: CARPENTER 32-6-3	Well #: 1S	API/UWI #: 05-067-09918-04	
Field: IGNACIO-BLANCO	City (SAP): IGNACIO	County/Parish: LA PLATA	State: COLORADO
Legal Description: NW SE-3-32N-6W-2386FSL-1763FEL			
Contractor: D & J DRLG		Rig/Platform Name/Num: D & J 1	
Job BOM: 7521			
Well Type: COAL DE-GAS			
Sales Person: HALAMERICA\HB50180		Srvc Supervisor: Lemont Jojola	
Job			

Formation Name			
Formation Depth (MD)	Top		Bottom
Form Type	BHST		
Job depth MD	400ft	Job Depth TVD	
Water Depth		Wk Ht Above Floor	
Perforation Depth (MD)	From		To

Well Data									
Description	New / Used	Size in	ID in	Weight lbm/ft	Thread	Grade	Top MD ft	Bottom MD ft	Top TVD ft
Casing		16	15.25	65			0	60	
Casing		8.625	8.097	24	8 RD	H-40	0	400	
Open Hole Section			12.25				60	400	

Tools and Accessories									
Type	Size in	Qty	Make	Depth ft		Type	Size in	Qty	Make
Guide Shoe	8.625			400		Top Plug	8.625		HES
Float Shoe	8.625					Bottom Plug	8.625		HES
Float Collar	8.625					SSR plug set	8.625		HES
Insert Float	8.625					Plug Container	8.625		HES
Stage Tool	8.625					Centralizers	8.625		HES

Miscellaneous Materials									
Gelling Agt		Conc		Surfactant		Conc		Acid Type	
Treatment Fld		Conc		Inhibitor		Conc		Sand Type	
								Qty	Conc
								Size	Qty

Fluid Data									
Stage/Plug #: 1									
Fluid #	Stage Type	Fluid Name	Qty	Qty UoM	Mixing Density lbm/gal	Yield ft ³ /sack	Mix Fluid Gal	Rate bbl/min	Total Mix Fluid Gal
1	Fresh Water	Fresh Water	10	bbl	8.33				
Fluid #	Stage Type	Fluid Name	Qty	Qty UoM	Mixing Density lbm/gal	Yield ft ³ /sack	Mix Fluid Gal	Rate bbl/min	Total Mix Fluid Gal

2	Lead Cement	HALCEM (TM) SYSTEM	240	sack	15.8	1.18		6	5.24		
5.24 Gal		FRESH WATER									
0.1250 lbm		POLY-E-FLAKE (101216940)									
2 %		CALCIUM CHLORIDE, PELLET, 50 LB (101509387)									
Fluid #	Stage Type	Fluid Name	Qty	Qty UoM	Mixing Density lbm/gal	Yield ft ³ /sack	Mix Fluid Gal	Rate bbl/min	Total Mix Fluid Gal		
3	Tail Cement	HALCEM (TM) SYSTEM	60	sack	15.8	1.19		6	5.26		
0.1250 lbm		POLY-E-FLAKE (101216940)									
0.30 %		SUPER CBL, 50 LB PAIL (100003668)									
5.26 Gal		FRESH WATER									
2 %		CALCIUM CHLORIDE, PELLET, 50 LB (101509387)									
Fluid #	Stage Type	Fluid Name	Qty	Qty UoM	Mixing Density lbm/gal	Yield ft ³ /sack	Mix Fluid Gal	Rate bbl/min	Total Mix Fluid Gal		
4	Displacement Mud		24	bbl	10						
Cement Left In Pipe		Amount	45 ft		Reason			Shoe Joint			
Mix Water:		pH ##	Mix Water Chloride:		## ppm		Mix Water Temperature:		## °F °C		
Cement Temperature:		## °F °C		Plug Displaced by:		## lb/gal kg/m ³ XXXX		Disp. Temperature:		## °F °C	
Plug Bumped?		Yes/No		Bump Pressure:		#### psi MPa		Floats Held?		Yes/No	
Cement Returns:		## bbl m ³		Returns Density:		## lb/gal kg/m ³		Returns Temperature:		## °F °C	
Comment											

Summary Report



Crew: _____

Job Start Date: 3/31/2015

Sales Order #: 0902284900

WO #: 0902284900

PO/AFE #: NA

Customer: CATAMOUNT ENERGY
PARTNERS LLC-EBUS
UWI / API Number: 05-067-09918-04
Well Name: CARPENTER 32-6-3
Well No: 1S

Field: IGNACIO-BLANCO
County/Parish: LA PLATA
State: COLORADO
Latitude: 37.045730
Longitude: -107.484670
Sect / Twn / Rng: 3/32/6

Job Type: CMT SURFACE
CASING BOM
Service Supervisor: Lemont Jojola

Cust Rep Name:
Cust Rep Phone #:

Remarks:

<i>The Information Stated Herein Is Correct</i>	Customer Representative Signature	Date
	Customer Representative Printed Name	