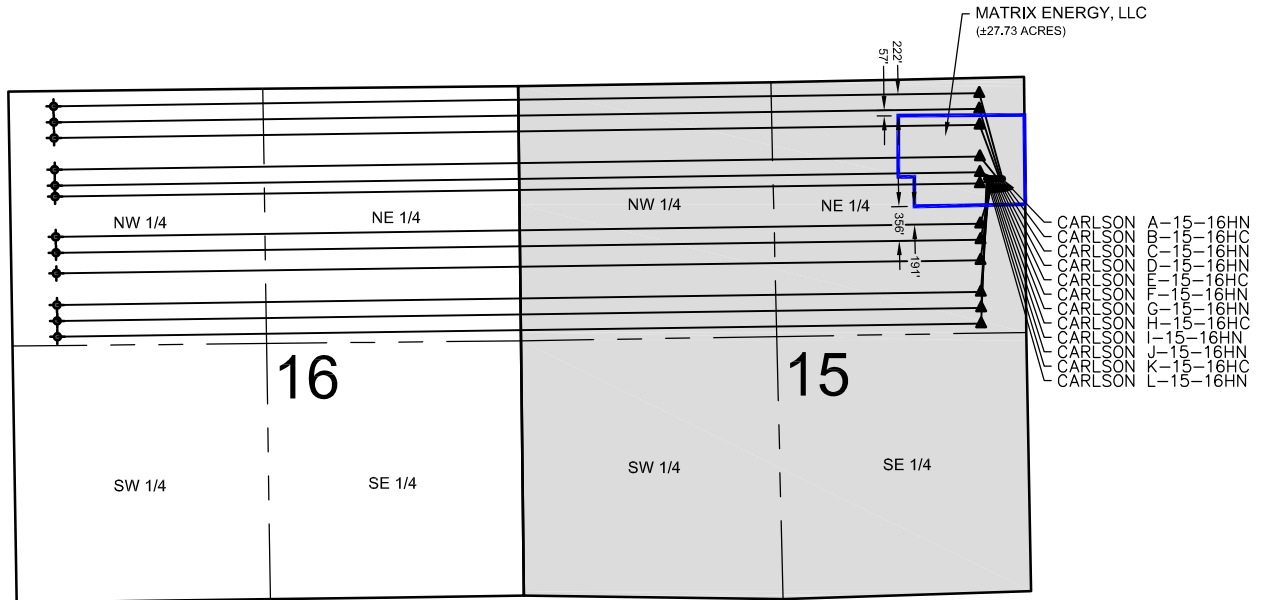


CARLSON 15-D PAD LEASE DRAWING

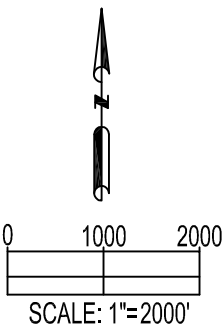


NOTES:

CARLSON A-15-16HN TO BE AT 1057' FNL, 234' FEL.
BOTTOM HOLE AT 160' FNL & 470' FWL, SEC 16.
CARLSON B-15-16HC TO BE AT 1057' FNL, 249' FEL.
BOTTOM HOLE AT 325' FNL & 470' FWL, SEC 16.
CARLSON C-15-16HN TO BE AT 1057' FNL, 264' FEL.
BOTTOM HOLE AT 490' FNL & 470' FWL, SEC 16.
CARLSON D-15-16HN TO BE AT 1056' FNL, 279' FEL.
BOTTOM HOLE AT 820' FNL & 470' FWL, SEC 16.
CARLSON E-15-16HC TO BE AT 1056' FNL, 294' FEL.
BOTTOM HOLE AT 985' FNL & 470' FWL, SEC 16.
CARLSON F-15-16HN TO BE AT 1056' FNL, 309' FEL.
BOTTOM HOLE AT 1100' FNL & 470' FWL, SEC 16.
CARLSON G-15-16HN TO BE AT 1055' FNL, 324' FEL.
BOTTOM HOLE AT 1520' FNL & 470' FWL, SEC 16.
CARLSON H-15-16HC TO BE AT 1055' FNL, 339' FEL.
BOTTOM HOLE AT 1685' FNL & 470' FWL, SEC 16.
CARLSON I-15-16HN TO BE AT 1055' FNL, 354' FEL.
BOTTOM HOLE AT 1900' FNL & 470' FWL, SEC 16.
CARLSON J-15-16HN TO BE AT 1054' FNL, 369' FEL.
BOTTOM HOLE AT 2230' FNL & 470' FWL, SEC 16.
CARLSON K-15-16HC TO BE AT 1054' FNL, 384' FEL.
BOTTOM HOLE AT 2395' FNL & 470' FWL, SEC 16.
CARLSON L-15-16HN TO BE AT 1054' FNL, 399' FEL.
BOTTOM HOLE AT 2560' FNL & 470' FWL, SEC 16.

DISTANCE FROM COMPLETED PORTION OF WELL BORE TO LEASE LINE:

CARLSON A-15-16HN 222' S
CARLSON B-15-16HC 57' S
CARLSON G-15-16HN 191' N
CARLSON H-15-16HC 356' N



LEGEND

- = PROPOSED WELL
- ▲ = LANDING POINT
- ◆ = BOTTOM HOLE
- = LEASE LINES

PREPARED BY:



FIELD DATE:

03-20-15

DRAWING DATE:

05-15-15

BY:

MLP

CHECKED BY:

KAD

SITE NAME:

CARLSON 15-D PAD

SURFACE LOCATION:

NE 1/4 NE 1/4, SEC. 15, T5N, R65W, 6TH P.M.
WELD COUNTY, COLORADO

PREPARED FOR:

