



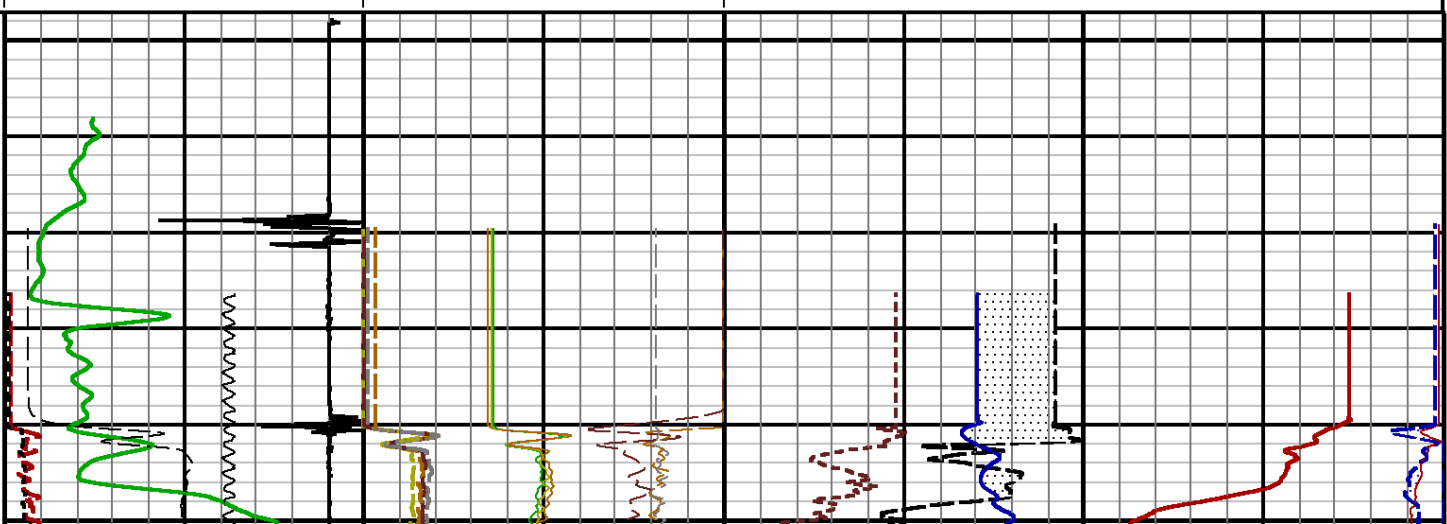
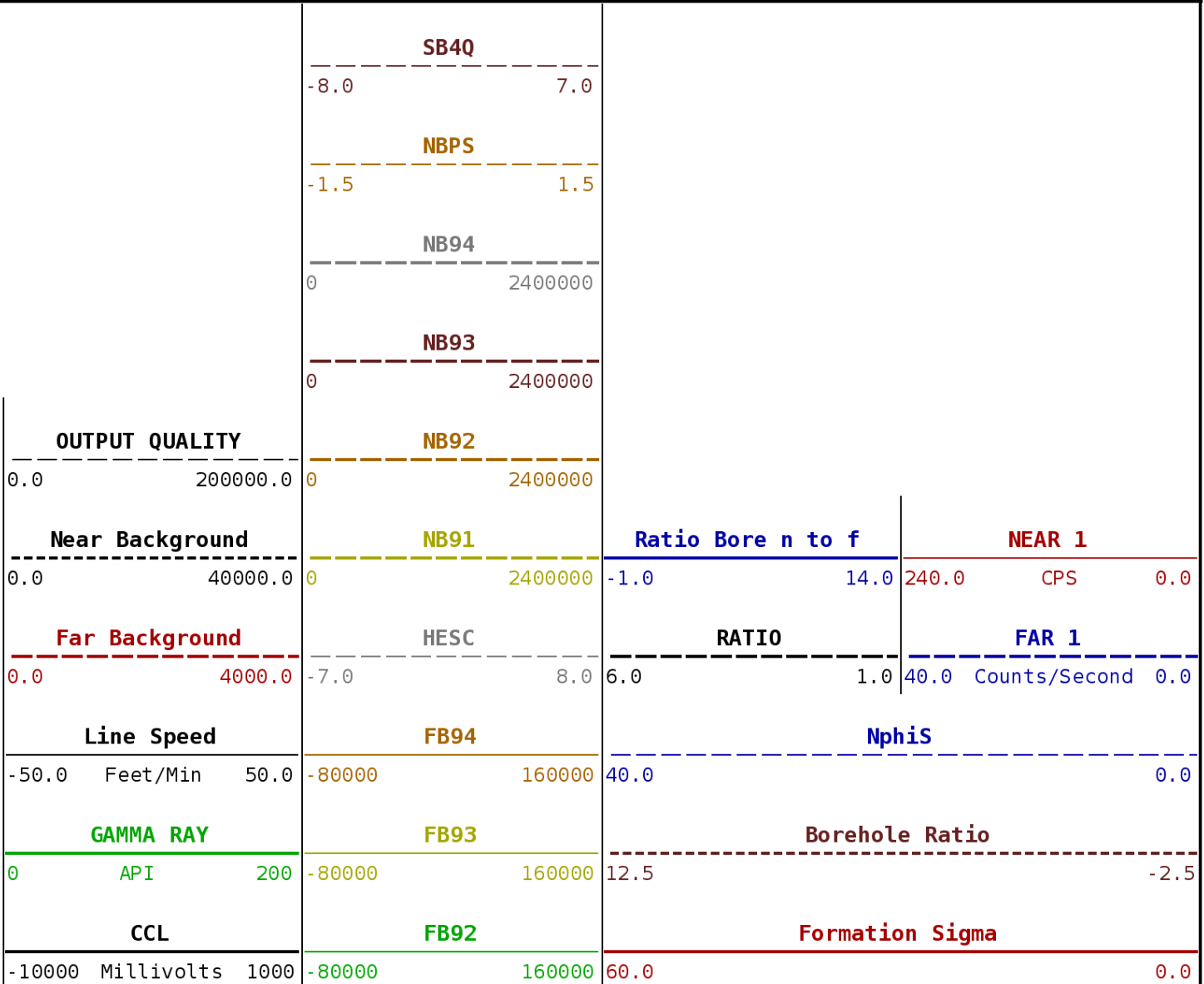
DEPTH SCALE: 5":100'

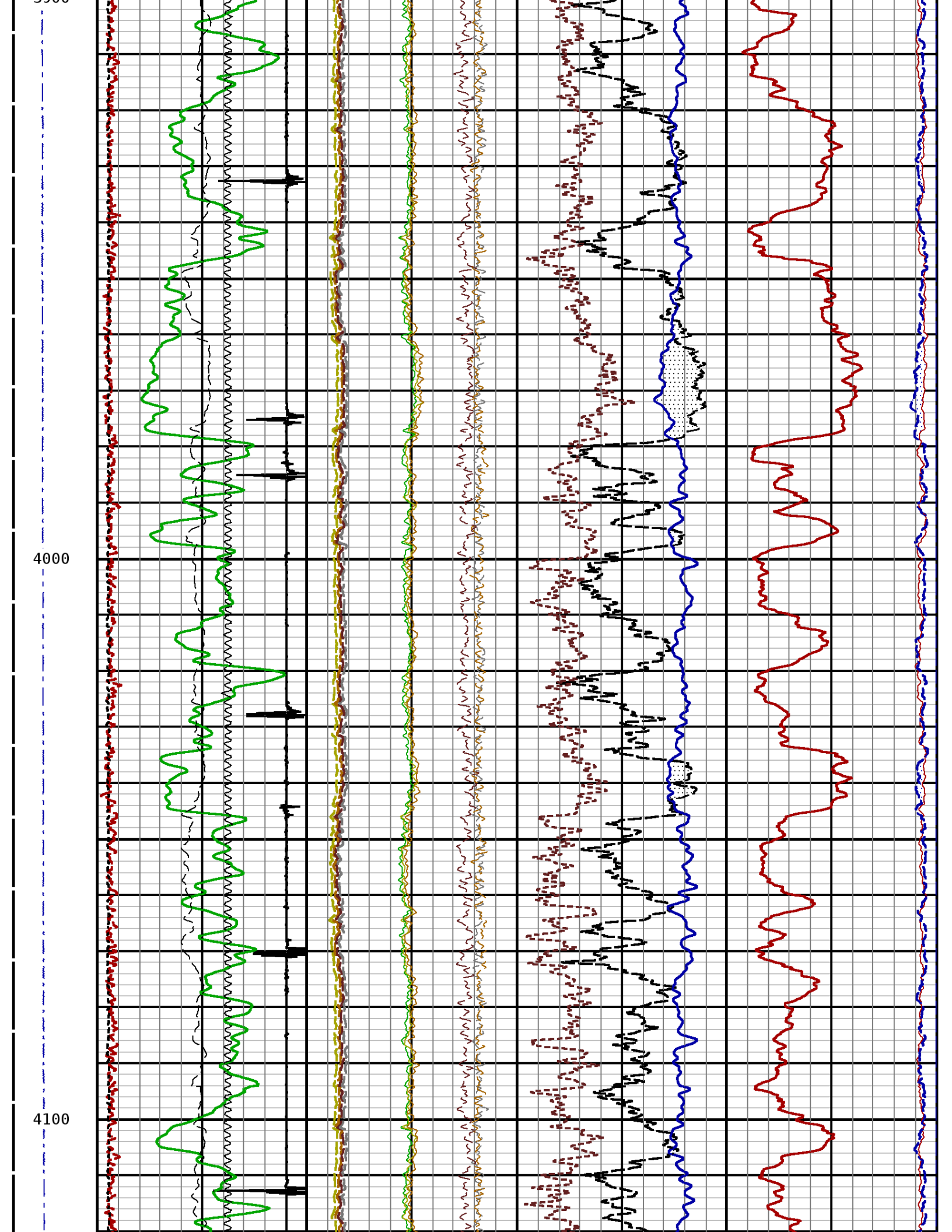
PROCESSED VERSION: 2012.07.18.162"

MAIN PASS

113204463 PNDMAIN

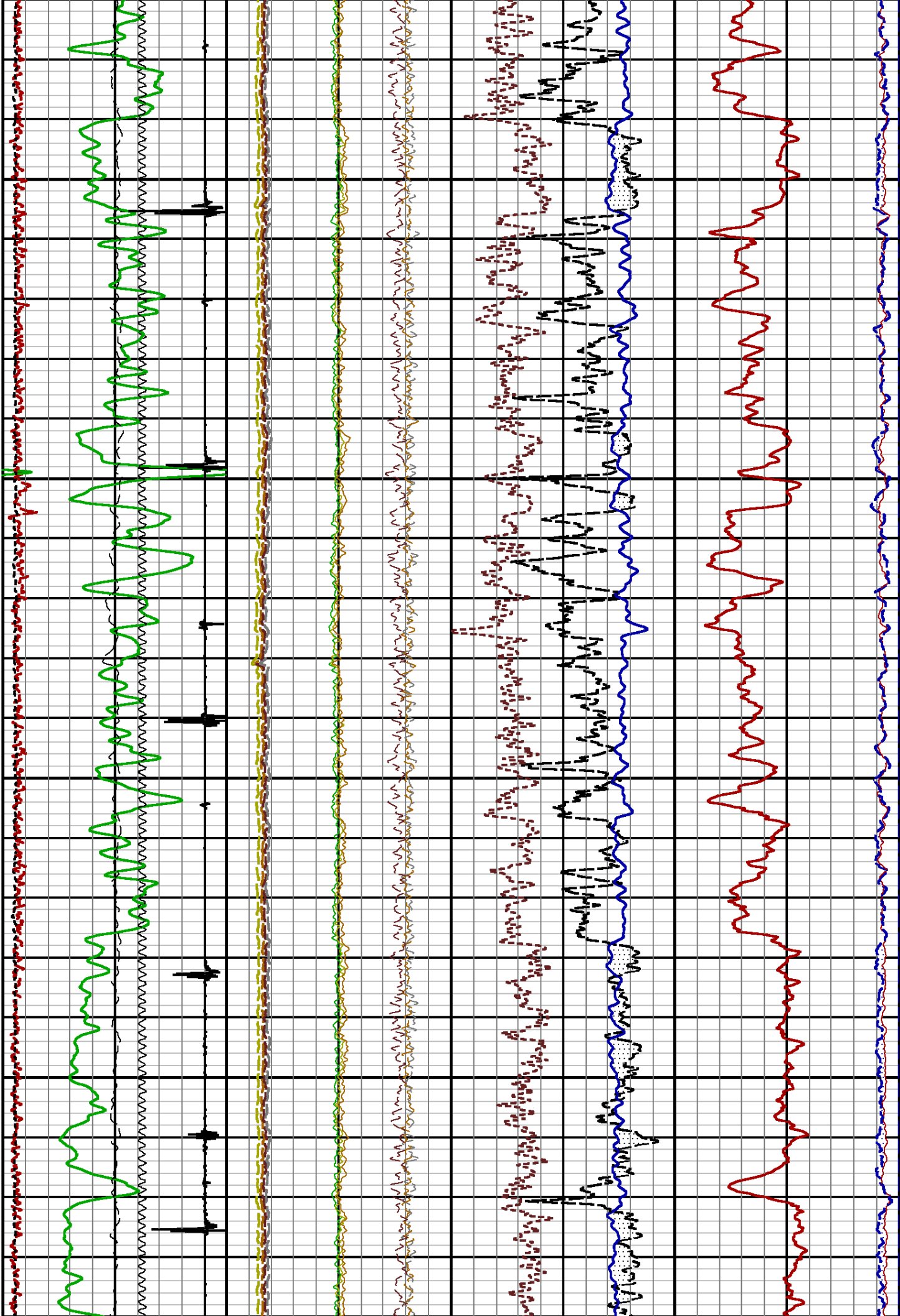
FINISH DEPTH: 3847.3 Feet DIRECTION: UP DATE: 03/11/2015 TIME: 22:27 MODE: ORIGINAL





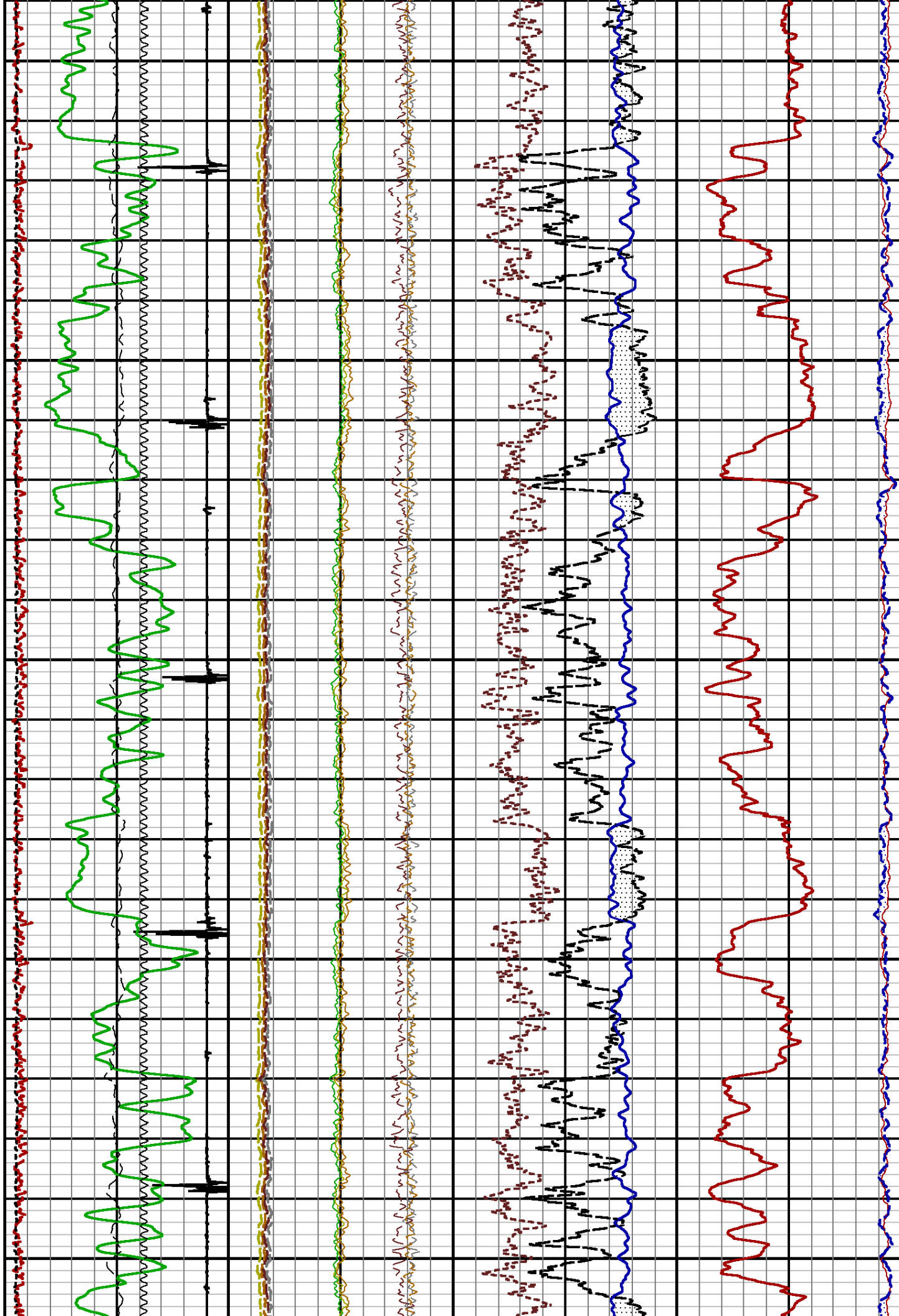
4200

4300



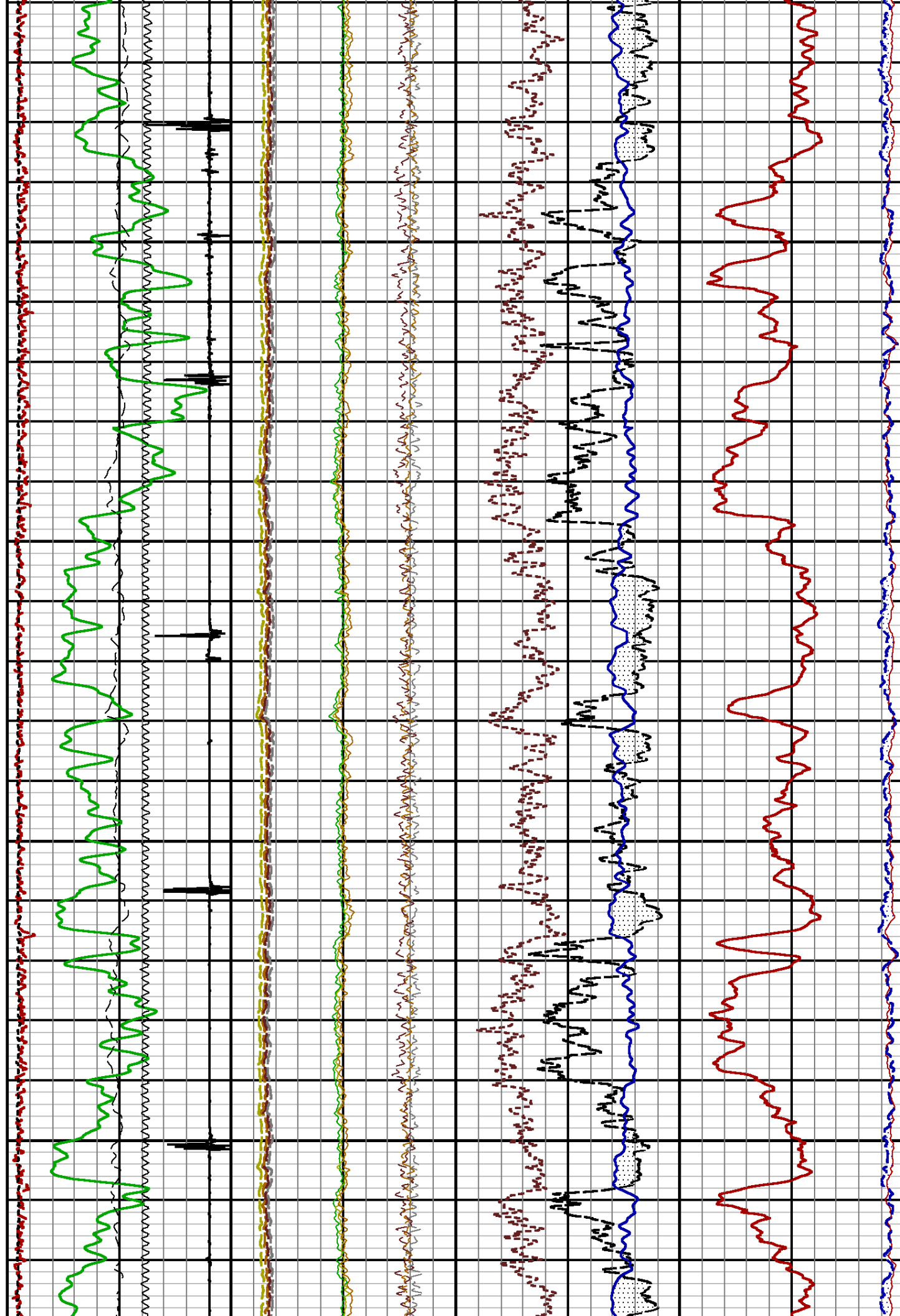
4400

4500



4600

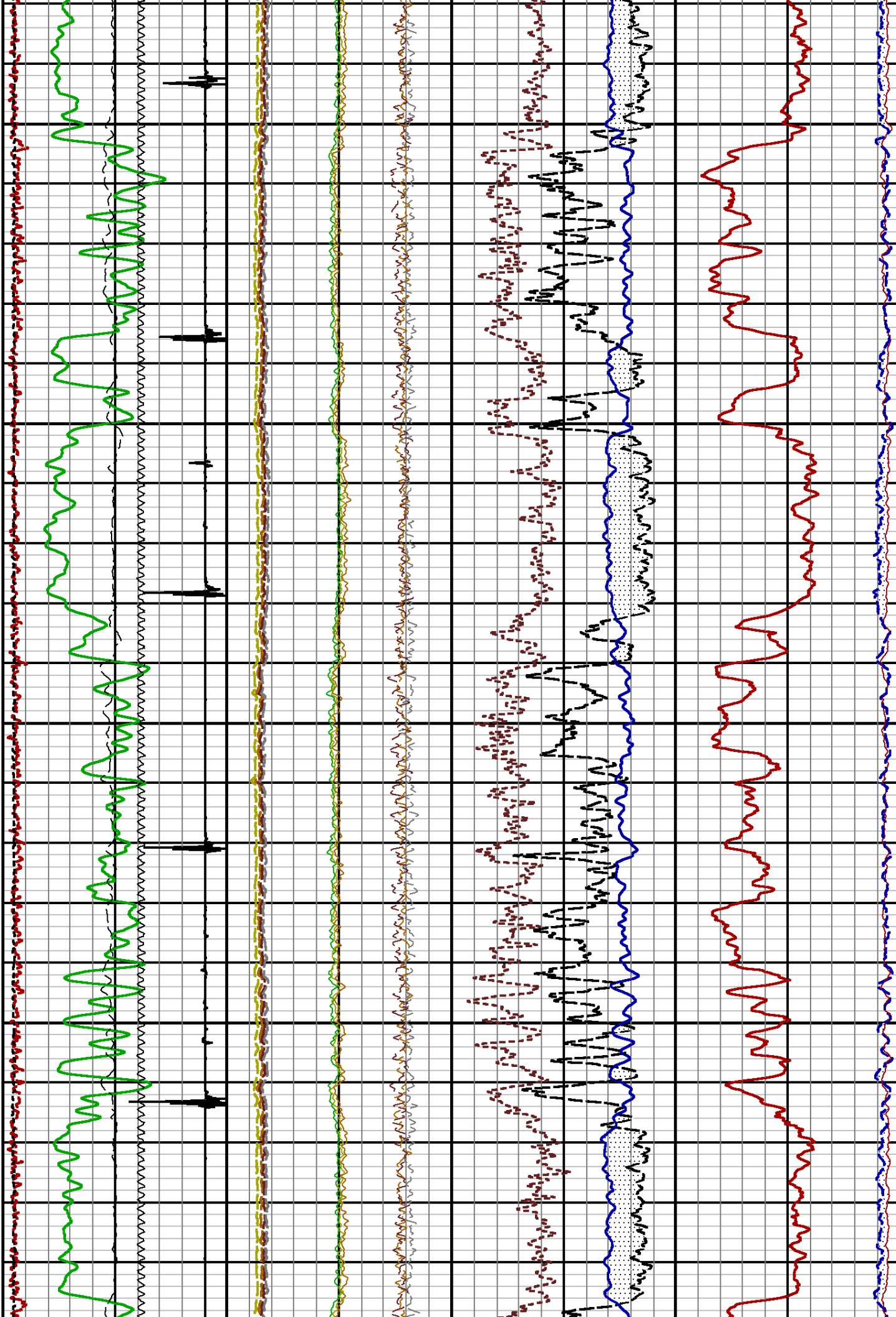
4700

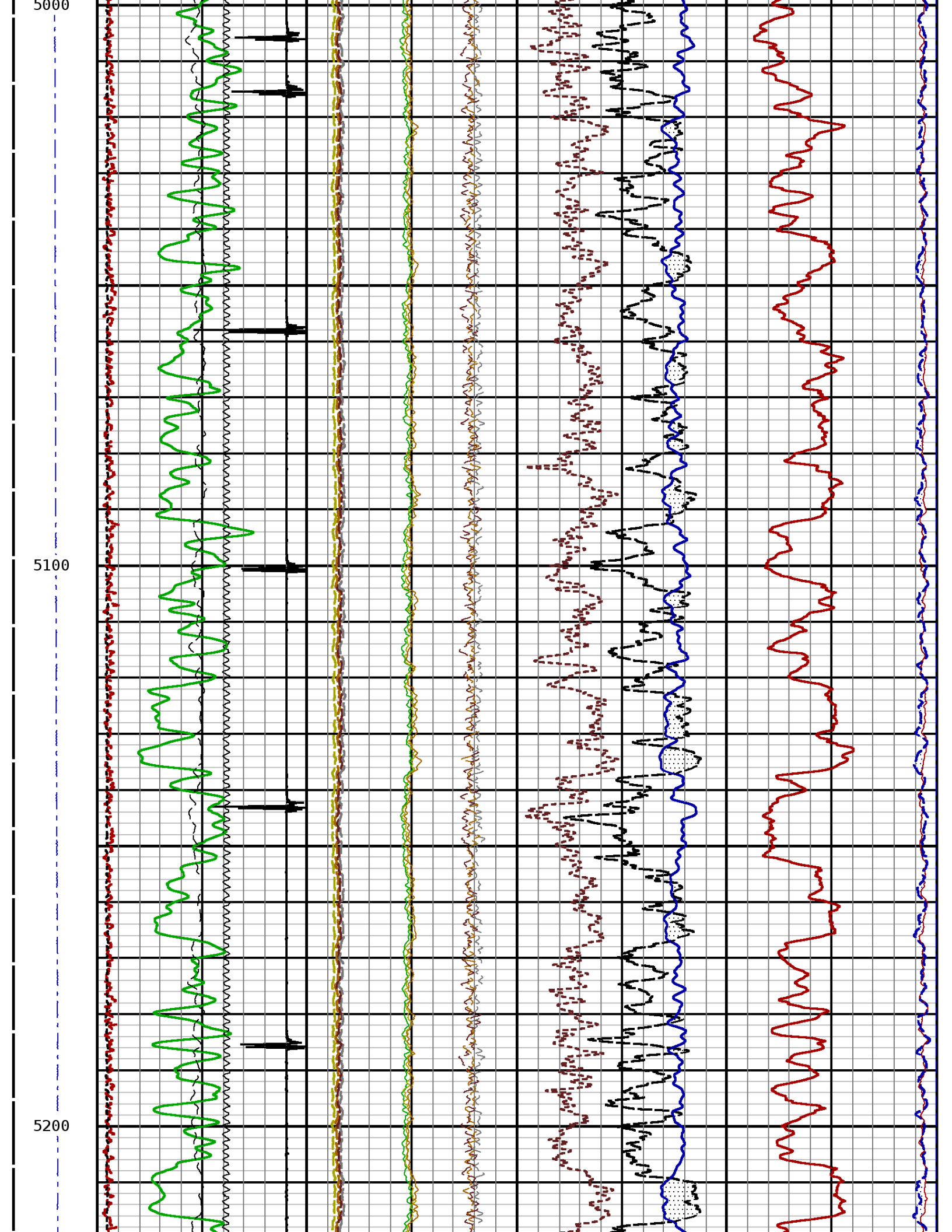




4800

4900

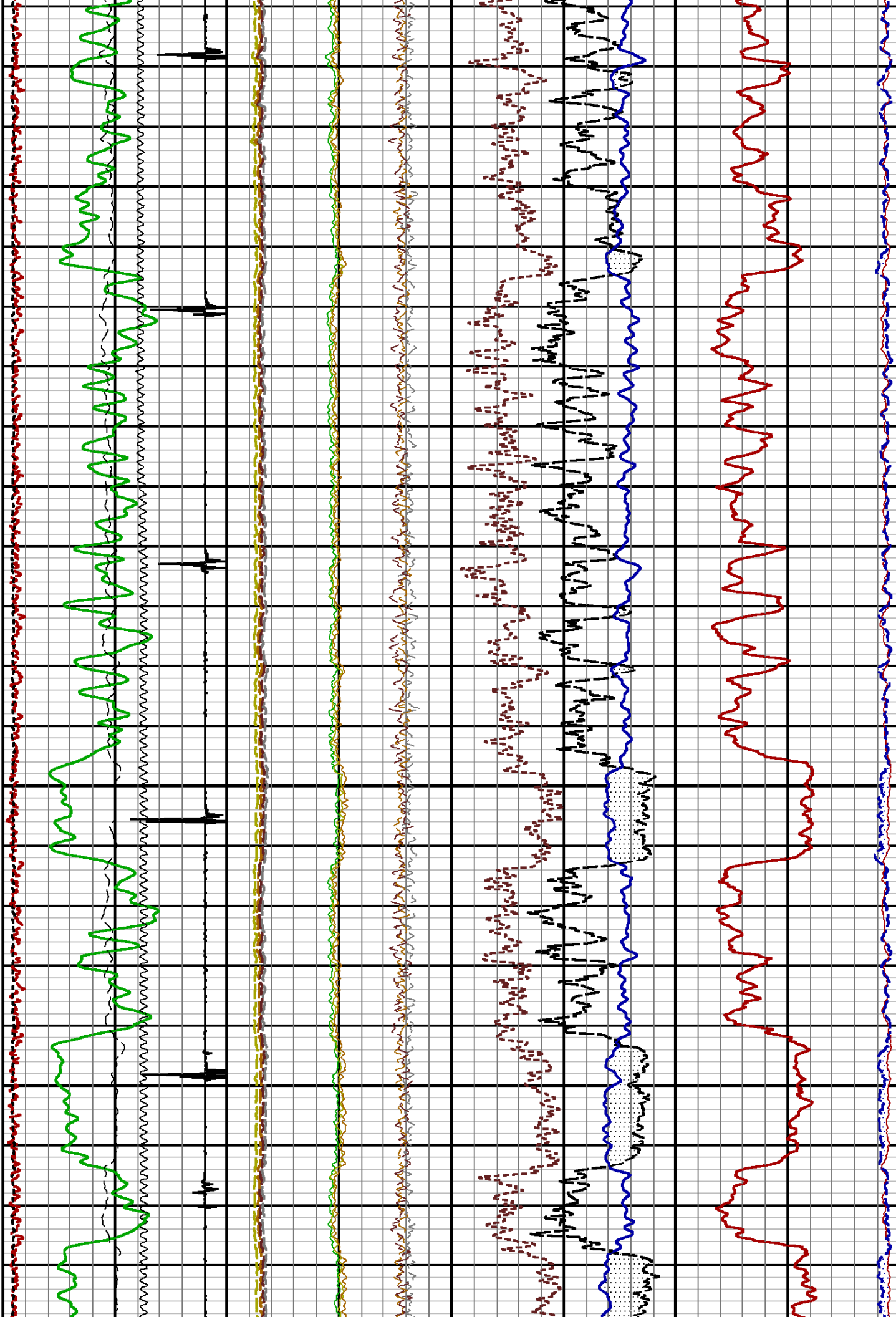






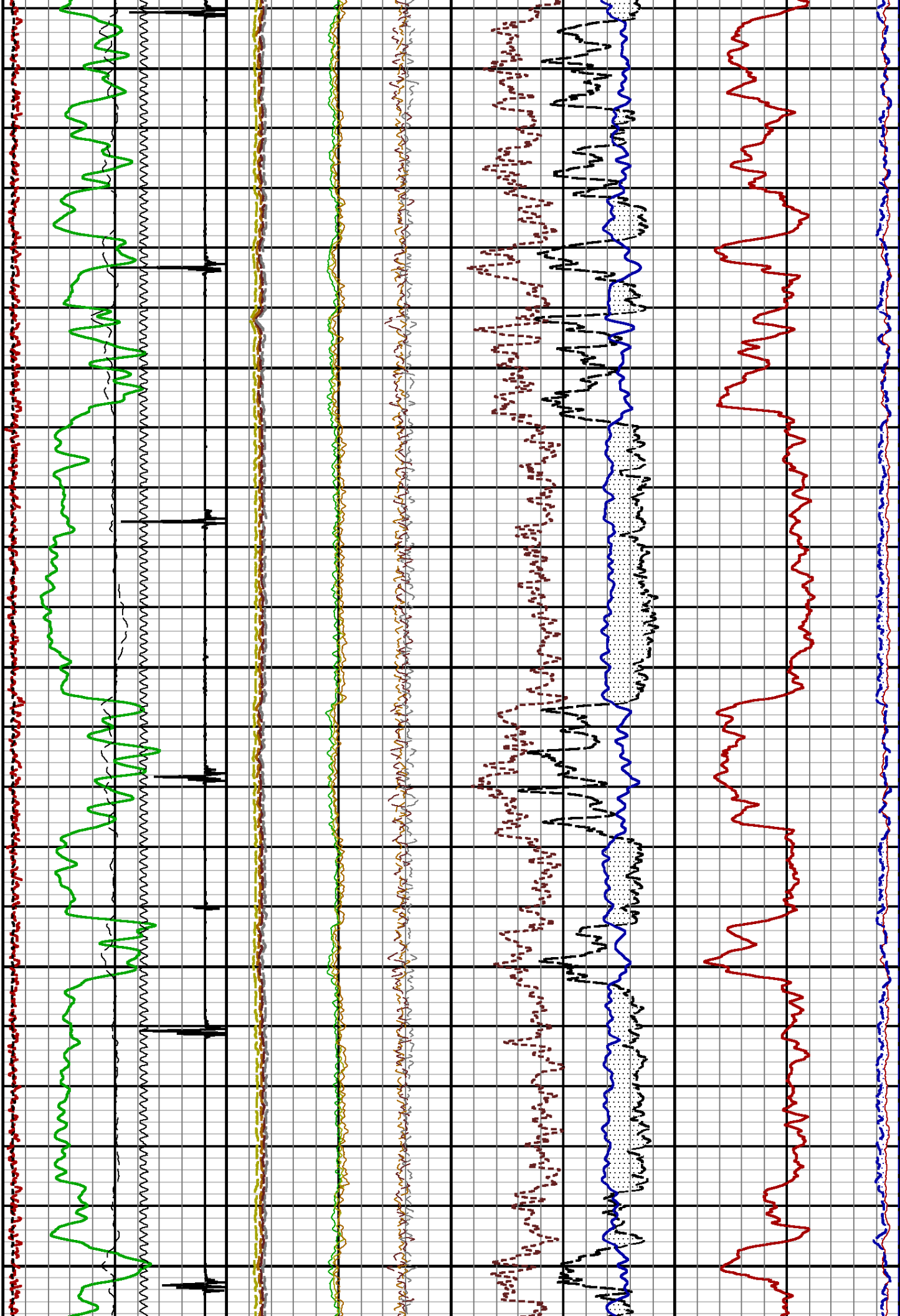
5300

5400



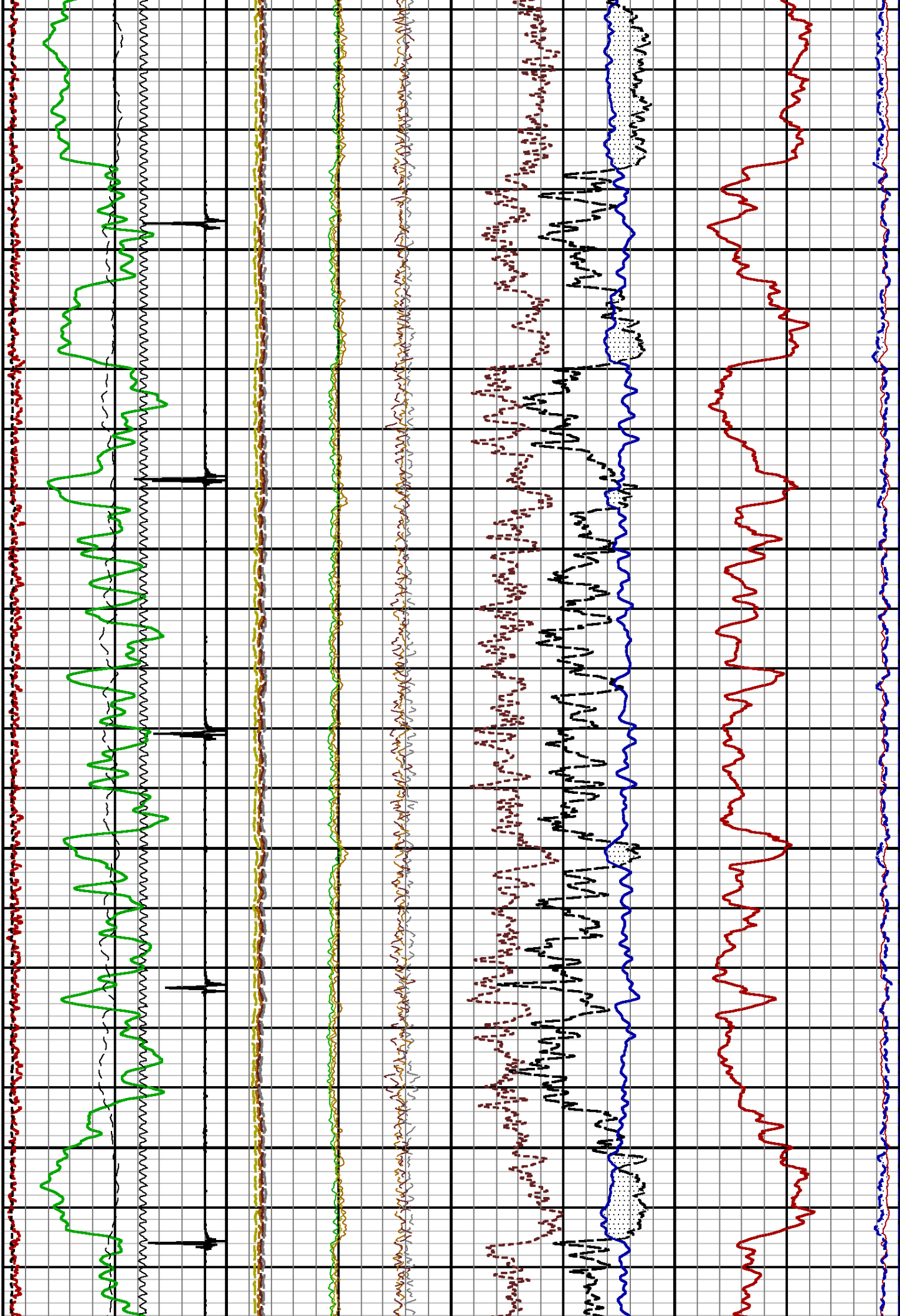
5500

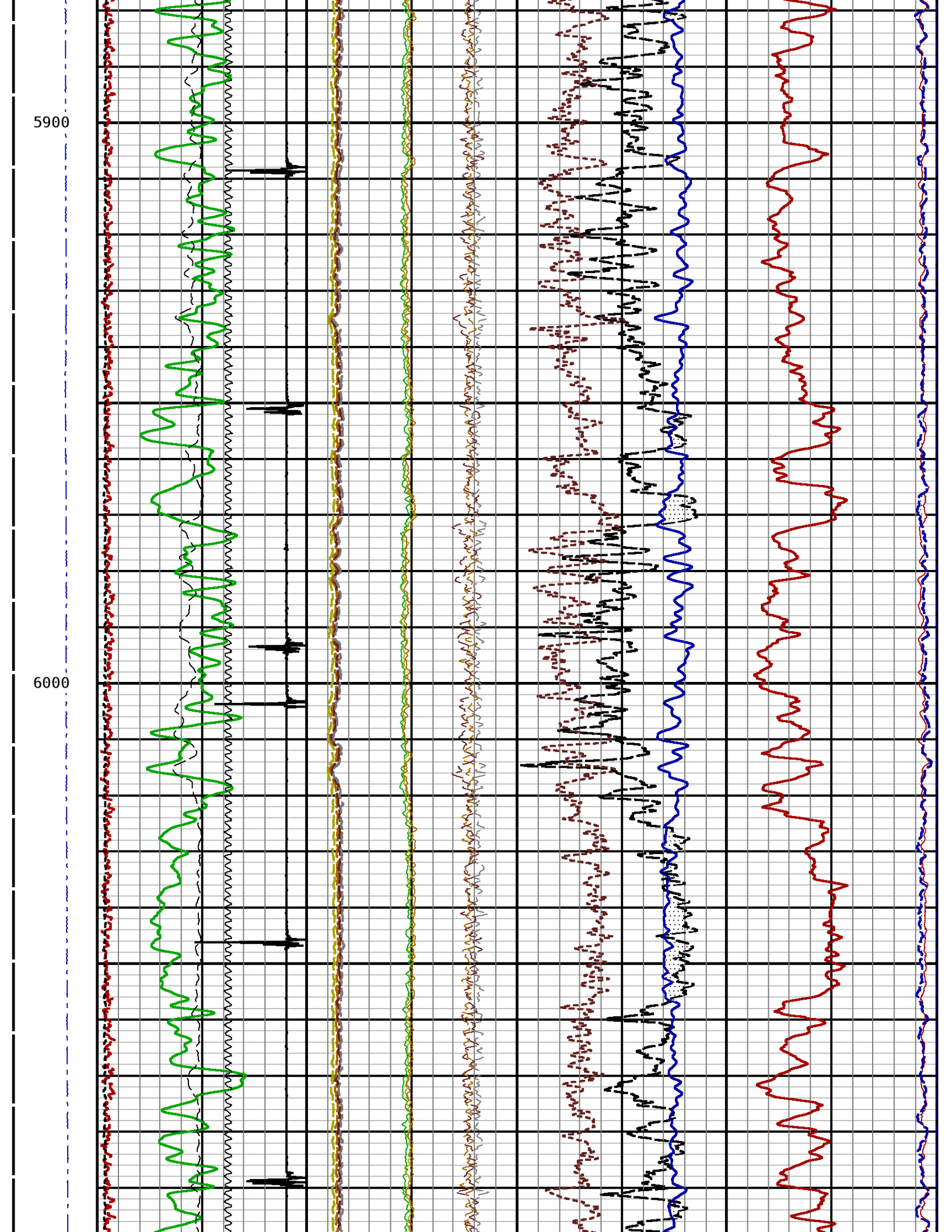
5600



5700

5800

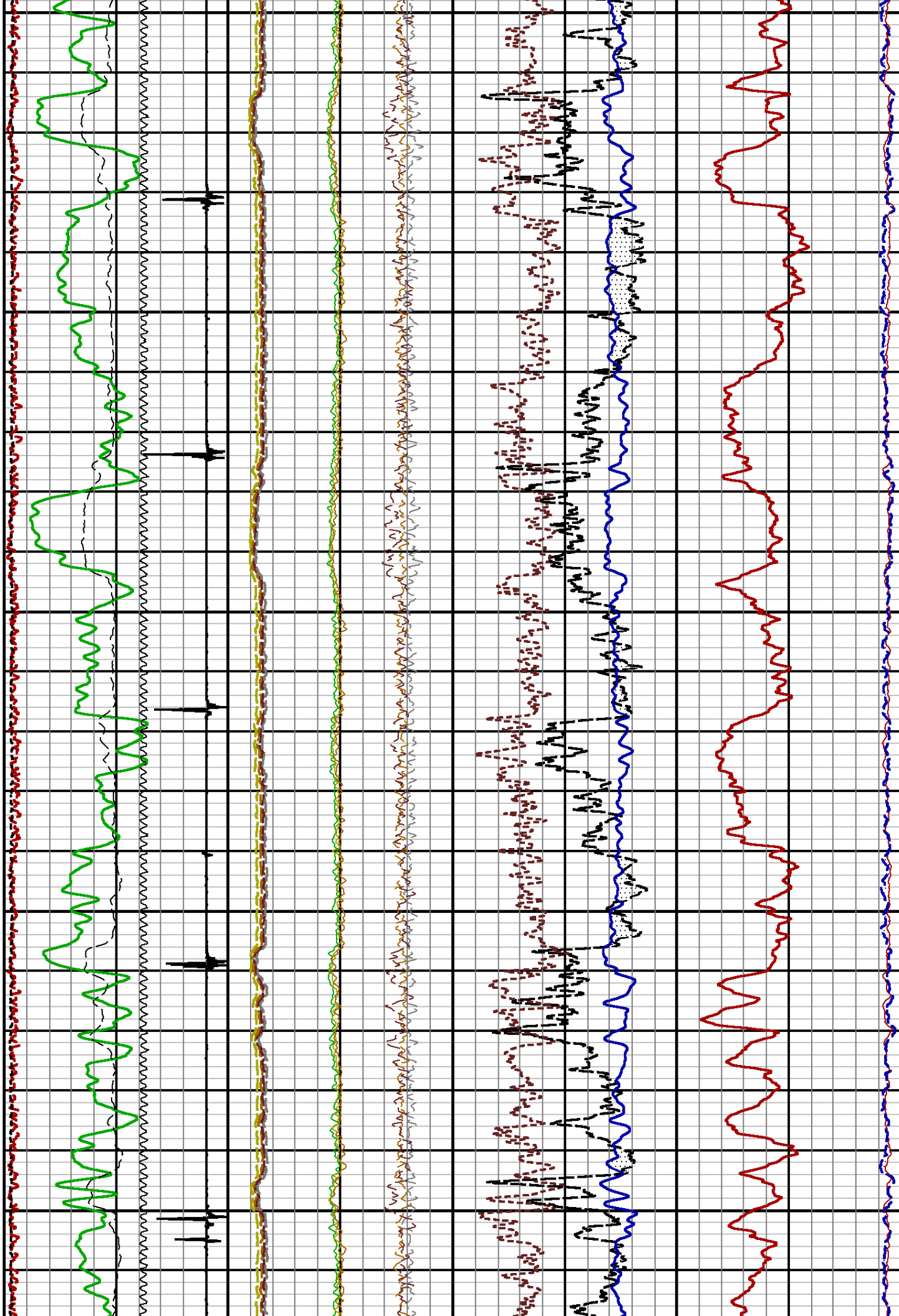




6100

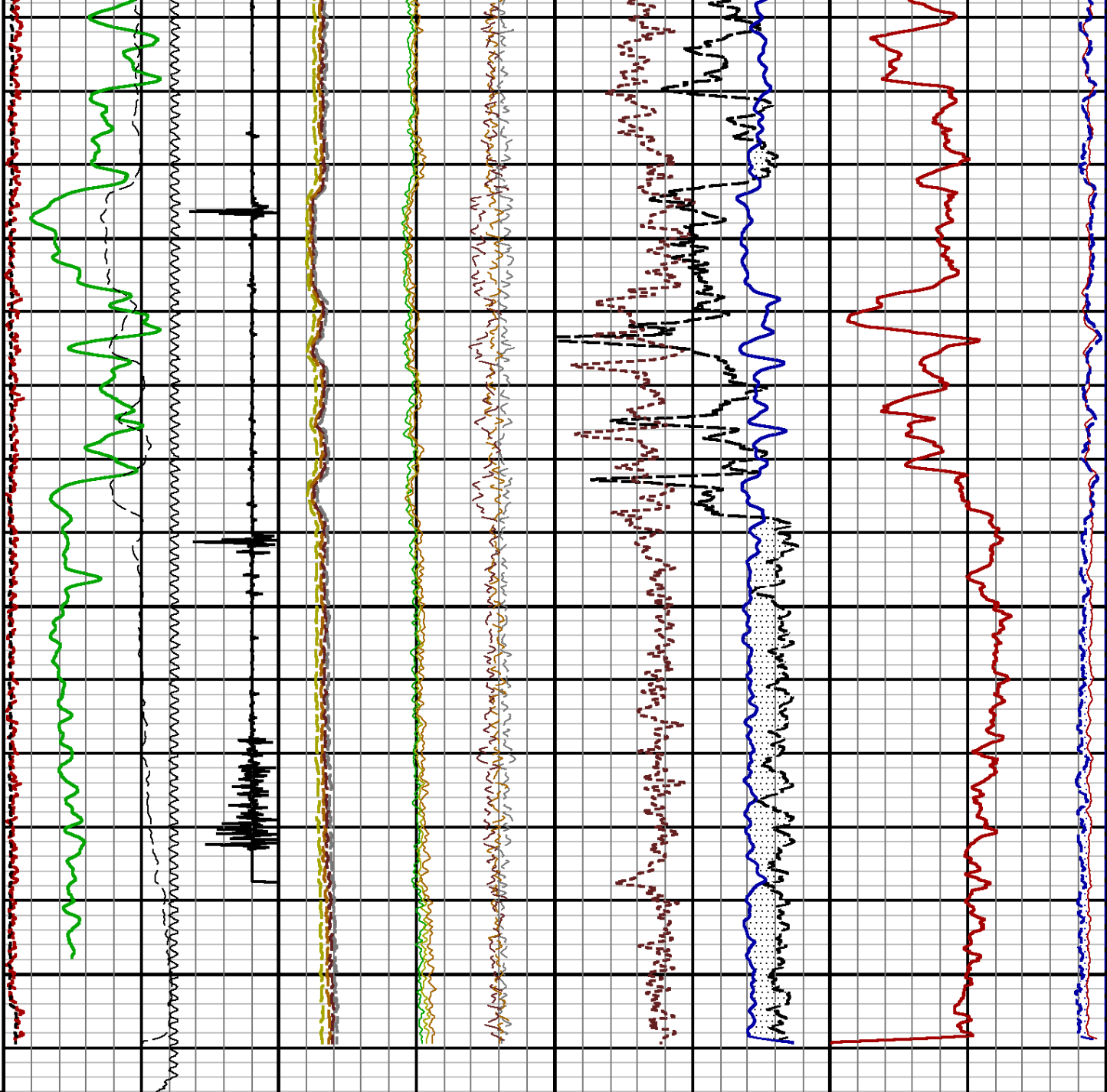
6200

6300

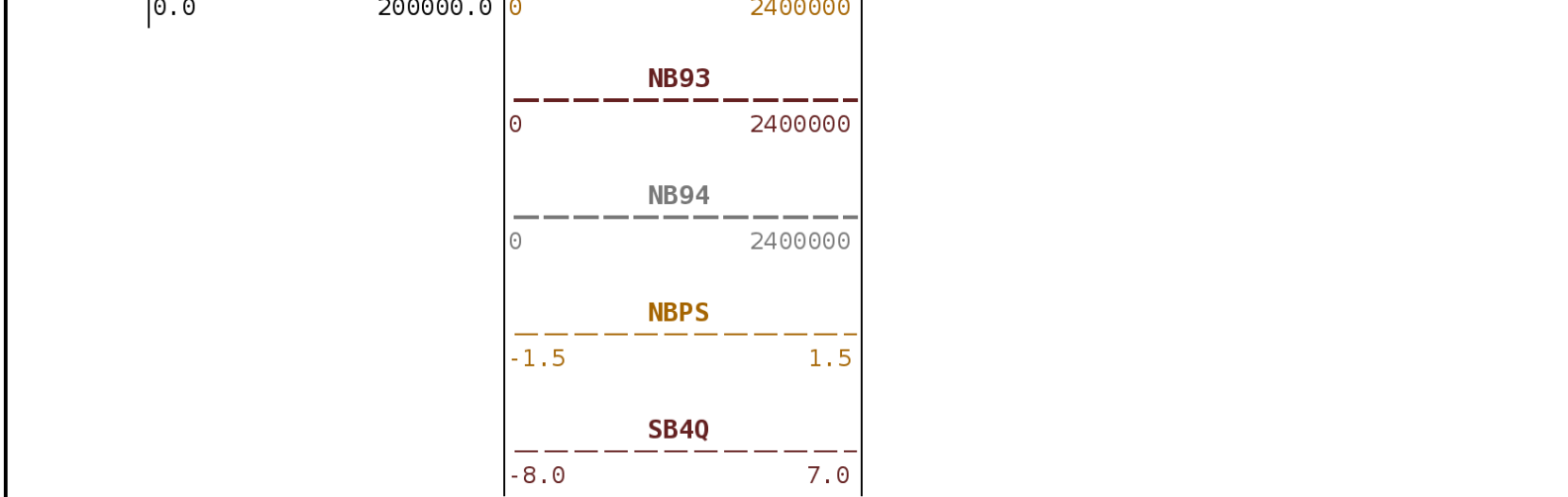




6400



Tension 0 2000	CCL		FB92		Formation Sigma	
	-10000	Millivolts 1000	-80000	160000	60.0	0.0
	GAMMA RAY		FB93		Borehole Ratio	
	0	API 200	-80000	160000	12.5	-2.5
	Line Speed		FB94		NphiS	
	-50.0	Feet/Min 50.0	-80000	160000	40.0	0.0
	Far Background		HESC		RATIO	
	0.0	4000.0	-7.0	8.0	6.0	1.0
	Near Background		NB91		Ratio Bore n to f	
	0.0	40000.0	0	2400000	-1.0	14.0
OUTPUT QUALITY		NB92		NEAR 1		
				240.0 CPS 0.0		



START DEPTH: **6466.1**    DIRECTION: **UP**    DATE: **03/11/2015**    TIME: **22:27**    MODE: **ORIGINAL**

113204463 PNDMAIN

**MAIN PASS**

DEPTH SCALE: **5":100'**    LOGGED VERSION: **2012.07.18.162"**

### 1 7/16 Adapter Head

Weight 2.2 LBS.  
Length 12 IN.  
Max. Diameter

Total Stack Weight in air  
Total Stack Length 32.0 FT.

### Pulsed Neutron Processor

Weight 49 LBS.  
Length 12.9 FT.  
Max. Diameter 1.69 IN.

### Pulsed Neutron Detectors

Weight 29.9 LBS  
Length 19.0 FT.  
Max. Diameter 1.69 IN.

CCL 28.51 FT.

GR 19.15 FT.

FAR DETECTOR 7.66 FT

From Target ( )

NEAR DETECTOR 7.02 FT

From Target ( )

1.00 in. dia.  
( cm)

1.44 in. dia.  
( cm)

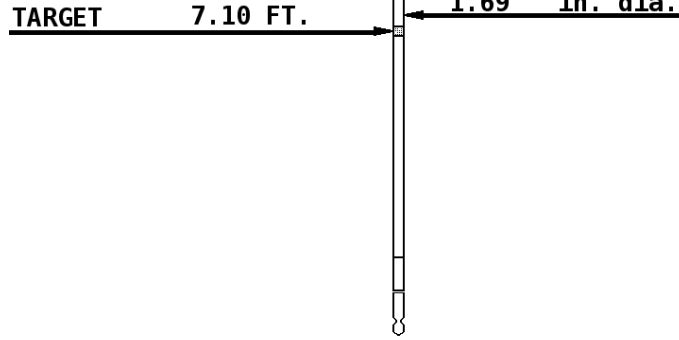
1.69 in. dia.

1.69 in. dia.

1.69 in. dia.

**Pulsed Neutron Generator**

Weight 26 LBS.  
Length 8.7 FT.  
Max. Diameter 1.69 IN.



COMPANY URSA OPERATING COMPANY

WELL BAT 32A-24-07-96

FIELD BATTLEMENT MESA

COUNTY GARFIELD STATE COLORADO



**Weatherford®**