

T12N, R65W

NW. COR.
SEC. 35, T12N, R65W
SET 2 1/2" ALUM. CAP
L.S. NO. 38305

NE. COR.
SEC. 35, T12N, R65W
FOUND 2 1/2" ALUM. CAP
L.S. NO. 37070

S 87°16'56" W 5266.23' (M)

**RESOLUTION FED
12-65-35-2-2NH**
SURFACE LOCATION

SURFACE LOCATION
GROUND ELEVATION= 5930.3'
NAD 83
LATITUDE= 40.967201°
LONGITUDE= -104.635056°

LATITUDE= 40°58'01.923"
LONGITUDE= -104°38'06.200"

BOTTOM HOLE LOCATION
NAD 83
LATITUDE= 40.943823°
LONGITUDE= -104.633915°

LATITUDE= 40°56'37.764"
LONGITUDE= -104°38'02.095"

35

S 88°15'25" W
2529.49' (C)

S 88°15'25" W
2631.74' (C)

SURFACE LOCATION
NAD 27
LATITUDE= 40.967219°
LONGITUDE= -104.634536°

LATITUDE= 40°58'01.987"
LONGITUDE= -104°38'04.330"

BOTTOM HOLE LOCATION
NAD 27
LATITUDE= 40.943841°
LONGITUDE= -104.633396°

LATITUDE= 40°56'37.829"
LONGITUDE= -104°38'00.225"

W. 1/4 COR.
SEC. 35, T12N, R65W
SET 2 1/2" ALUM. CAP
L.S. NO. 38305

SW. COR.
SEC. 35, T12N, R65W
FOUND 2 1/2" ALUM. CAP
L.S. NO. 9911

S. 1/4 COR.
SEC. 35, T12N, R65W
FOUND STONE

SE. COR.
SEC. 35, T12N, R65W
FOUND 2 1/2" ALUM. CAP
L.S. NO. 9911

WELL BORE CONTINUES
INTO SECTION 2

MATCH LINE
SEE SHEET 2

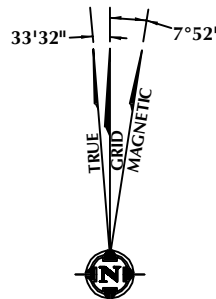
CERTIFICATE OF SURVEYOR:

THIS IS TO CERTIFY THAT THE ABOVE PLAT WAS PREPARED FROM FIELD NOTES OF ACTUAL SURVEY MADE BY ME OR UNDER MY SUPERVISION AND THAT THE SAME ARE TRUE AND CORRECT TO THE BEST OF MY KNOWLEDGE AND BELIEF. THIS CERTIFICATE DOES NOT REPRESENT A LAND SURVEY PLAT OR IMPROVEMENT SURVEY PLAT AS DEFINED BY C.S. 38-51-102 AND CANNOT BE RELIED UPON TO DETERMINE OWNERSHIP.

Benjamin J. Reenders
PROFESSIONAL LAND SURVEYOR
38305

BENJAMIN J. REENDERS
PROFESSIONAL LAND SURVEYOR
COLORADO REGISTRATION NUMBER 14306

NOTICE:
ACCORDING TO COLORADO STATE LAW YOU MUST COMMENCE ANY LEGAL ACTION BASED UPON ANY DEFECT IN THIS SURVEY WITHIN THREE YEARS AFTER YOU FIRST DISCOVER SUCH DEFECT. IN NO EVENT MAY ANY ACTION BASED UPON ANY DEFECT IN THIS SURVEY BE COMMENCED MORE THAN TEN YEARS FROM THE DATE ON THE CERTIFICATION SHOWN HEREON.



NOTE:
MAGNETIC NORTH IS CURRENT AS OF 3/5/2015.
MAGNETIC NORTH CHANGES WEST 0°06' PER YEAR.

SCALE: 1" = 1000'

NOTES:

- ▲ INDICATES FOUND SECTION CORNER
- INDICATES CALCULATED CORNER
- INDICATES STATE LINE MONUMENT
- ELEVATION BASED ON NAVD88 (GEOID09)
- BASIS OF BEARING DERIVED FROM COLORADO COORDINATE SYSTEM 1983 NORTH ZONE UNLESS OTHERWISE NOTED.
- ALL MEASURED DISTANCES ARE GRID.
- COMBINED SCALE FACTOR: .99975766
- OPERATOR: ROB WILSON / PDOP = 1.3
- SEE ADDENDUM TO WELL LOCATION CERTIFICATE FOR EXISTING IMPROVEMENTS WITHIN 500' OF THE WELL PAD.
- WELL FOOTAGES ARE MEASURED AT RIGHT ANGLES TO THE SECTION LINES.
- THE BOTTOM OF HOLE BEARS S02°40'38"E, 8524' FROM THE SURFACE LOCATION.

WELL PAD - RESOLUTION FED 12-65-35-2CH

RESOLUTION FED 12-65-35-2-2NH
WELL LOCATION CERTIFICATE
1274' FNL & 860' FWL NWNW (SURFACE)
LOCATED IN SECTION 35
T12N, R65W, 6TH P.M.
600' FSL & 1270' FWL SWSW (BOTTOM)
LOCATED IN SECTION 2
T11N, R65W, 6TH P.M.
WELD COUNTY, COLORADO

**Anadarko E&P
Onshore LLC**
1099 18th Street
Denver, Colorado 80202



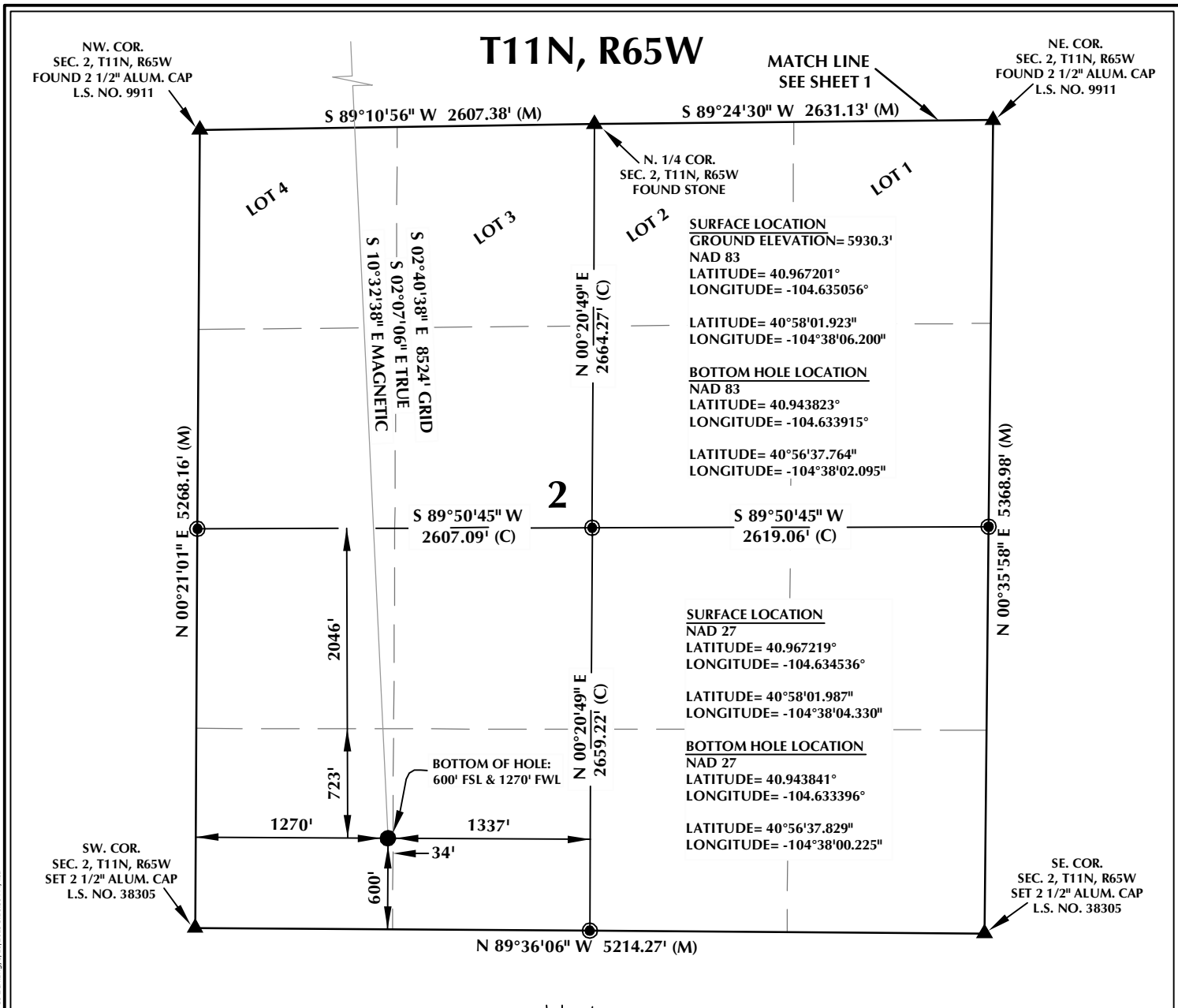
CONSULTING, LLC

SHERIDAN OFFICE
1095 Saberton Avenue
Sheridan, Wyoming 82801
Phone 307-674-0609

LOVELAND OFFICE
1635 Foxtrail Drive, Suite 204
Loveland, Colorado 80538
Phone 970-776-4331

DRAFTED BY:	LMO	CHECKED BY:	BJR	SHEET NO:
DATE DRAFTED:	3/10/15	DATE SURVEYED:	12/16/14	1
REVISED:		FILE NAME:	14-52	1 OF 2

K:\ANADARKO\2014\2014_52_RESOLUTION_FED_12-65-35-2CH\RESOLUTION_FED_12-65-35-2CH.dwg, 3/16/2015 3:16:30 PM, lba

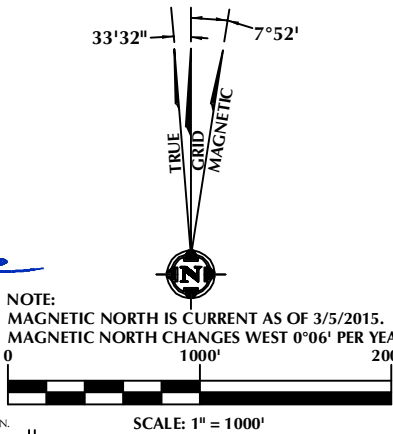


CERTIFICATE OF SURVEYOR:

THIS IS TO CERTIFY THAT THE ABOVE PLAT WAS PREPARED FROM FIELD NOTES OF ACTUAL SURVEY MADE BY ME OR UNDER MY SUPERVISION AND THAT THE SAME ARE TRUE AND CORRECT TO THE BEST OF MY KNOWLEDGE AND BELIEF. THIS CERTIFICATE DOES NOT REPRESENT A LAND SURVEY PLAT OR IMPROVEMENT SURVEY PLAT AS DEFINED BY C.S. 38-51-102 AND CANNOT BE RELIED UPON TO DETERMINE OWNERSHIP.

Benjamin J. Reenders
BENJAMIN J. REENDERS
PROFESSIONAL LAND SURVEYOR
COLORADO REGISTRATION NUMBER 18306

NOTICE:
ACCORDING TO COLORADO STATE LAW YOU MUST COMMENCE ANY LEGAL ACTION BASED UPON ANY DEFECT IN THIS SURVEY WITHIN THREE YEARS AFTER YOU FIRST DISCOVER SUCH DEFECT. IN NO EVENT MAY ANY ACTION BASED UPON ANY DEFECT IN THIS SURVEY BE COMMENCED MORE THAN TEN YEARS FROM THE DATE ON THE CERTIFICATION SHOWN HEREON.



NOTES:

- ▲ INDICATES FOUND SECTION CORNER
- INDICATES CALCULATED CORNER
- INDICATES STATE LINE MONUMENT
- ELEVATION BASED ON NAVD88 (GEOID09)
- BASIS OF BEARING DERIVED FROM COLORADO COORDINATE SYSTEM 1983 NORTH ZONE UNLESS OTHERWISE NOTED.
- ALL MEASURED DISTANCES ARE GRID.
- COMBINED SCALE FACTOR: .99975766
- OPERATOR: ROB WILSON / PDOP = 1.3
- SEE ADDENDUM TO WELL LOCATION CERTIFICATE FOR EXISTING IMPROVEMENTS WITHIN 500' OF THE WELL PAD.
- WELL FOOTAGES ARE MEASURED AT RIGHT ANGLES TO THE SECTION LINES.
- THE BOTTOM OF HOLE BEARS S02°40'38"E, 8524' FROM THE SURFACE LOCATION.

WELL PAD - RESOLUTION FED 12-65-35-2CH

RESOLUTION FED 12-65-35-2NH
WELL LOCATION CERTIFICATE
1274' FNL & 860' FWL NWNW (SURFACE)
LOCATED IN SECTION 35
T11N, R65W, 6TH P.M.
600' FSL & 1270' FWL SWSW (BOTTOM)
LOCATED IN SECTION 2
T11N, R65W, 6TH P.M.
WELD COUNTY, COLORADO

Anadarko E&P
Onshore LLC
1099 18th Street
Denver, Colorado 80202



CONSULTING, LLC

SHERIDAN OFFICE
1095 Saberton Avenue
Sheridan, Wyoming 82801
Phone 307-674-0609

LOVELAND OFFICE
1635 Foxtrail Drive, Suite 204
Loveland, Colorado 80538
Phone 970-776-4331

DRAFTED BY:	LMO	CHECKED BY:	BJR	SHEET NO:
DATE DRAFTED:	3/10/15	DATE SURVEYED:	12/16/14	2
REVISED:		FILE NAME:	14-52	2 OF 2