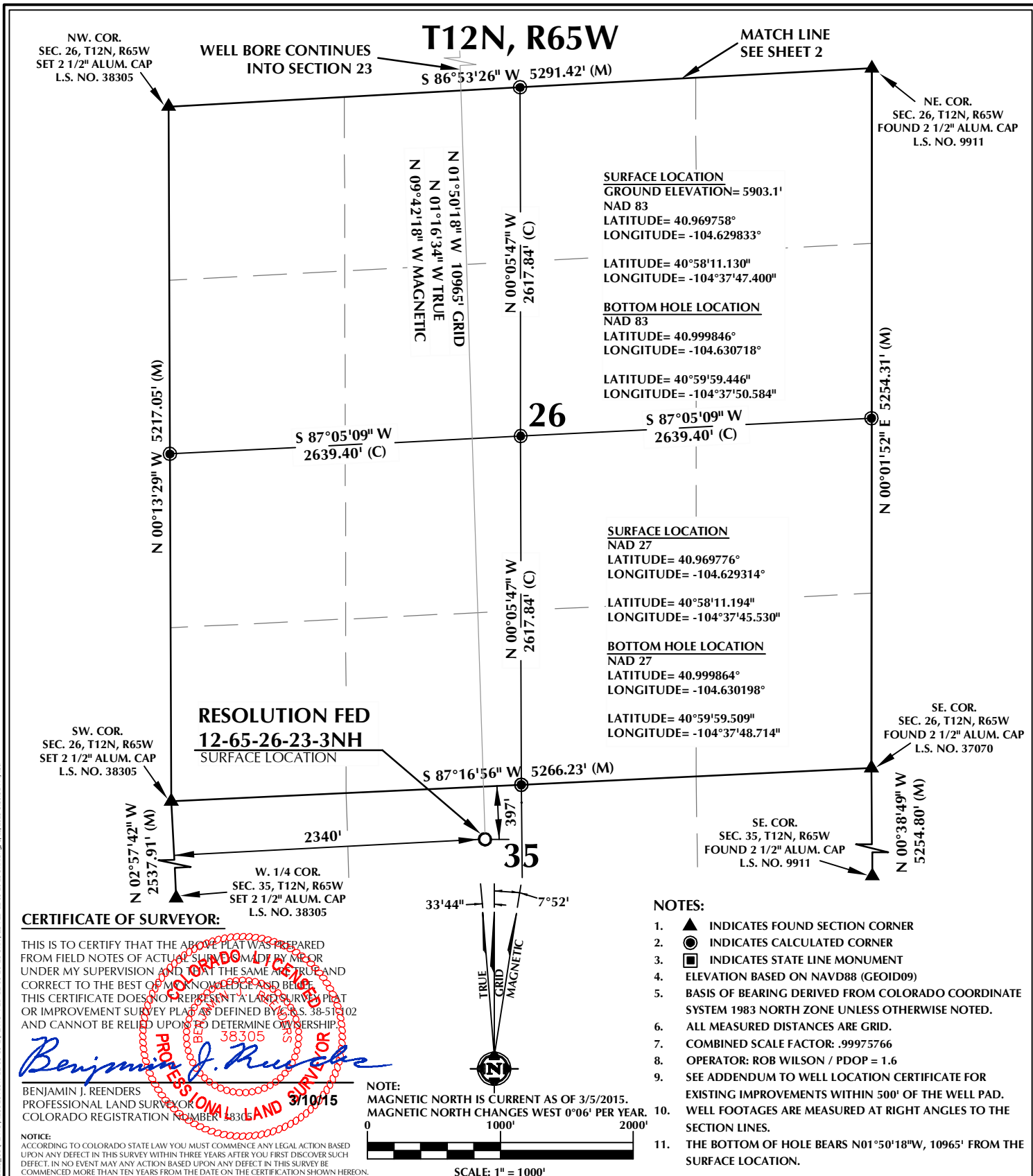


K:\ANADARKO\2014\12-65-26-23-3NH\RESOLUTION 12-65-26-23-3NH\RES FED 12-65-26-23-3NH.dwg, 3/13/2015 3:36:31 PM, lba



WELL PAD - RESOLUTION FED 12-65-26-23-3NH

**RESOLUTION FED 12-65-26-23-3NH**  
**WELL LOCATION CERTIFICATE**  
397' FNL & 2340' FWL NENW (SURFACE)  
LOCATED IN SECTION 35  
118' FSL & 1960' FWL LOT 3 (SESW) (BOTTOM)  
LOCATED IN SECTION 14  
T12N, R65W, 6TH P.M.  
WELD COUNTY, COLORADO

**Anadarko E&P**  
**Onshore LLC**  
1099 18th Street  
Denver, Colorado 80202



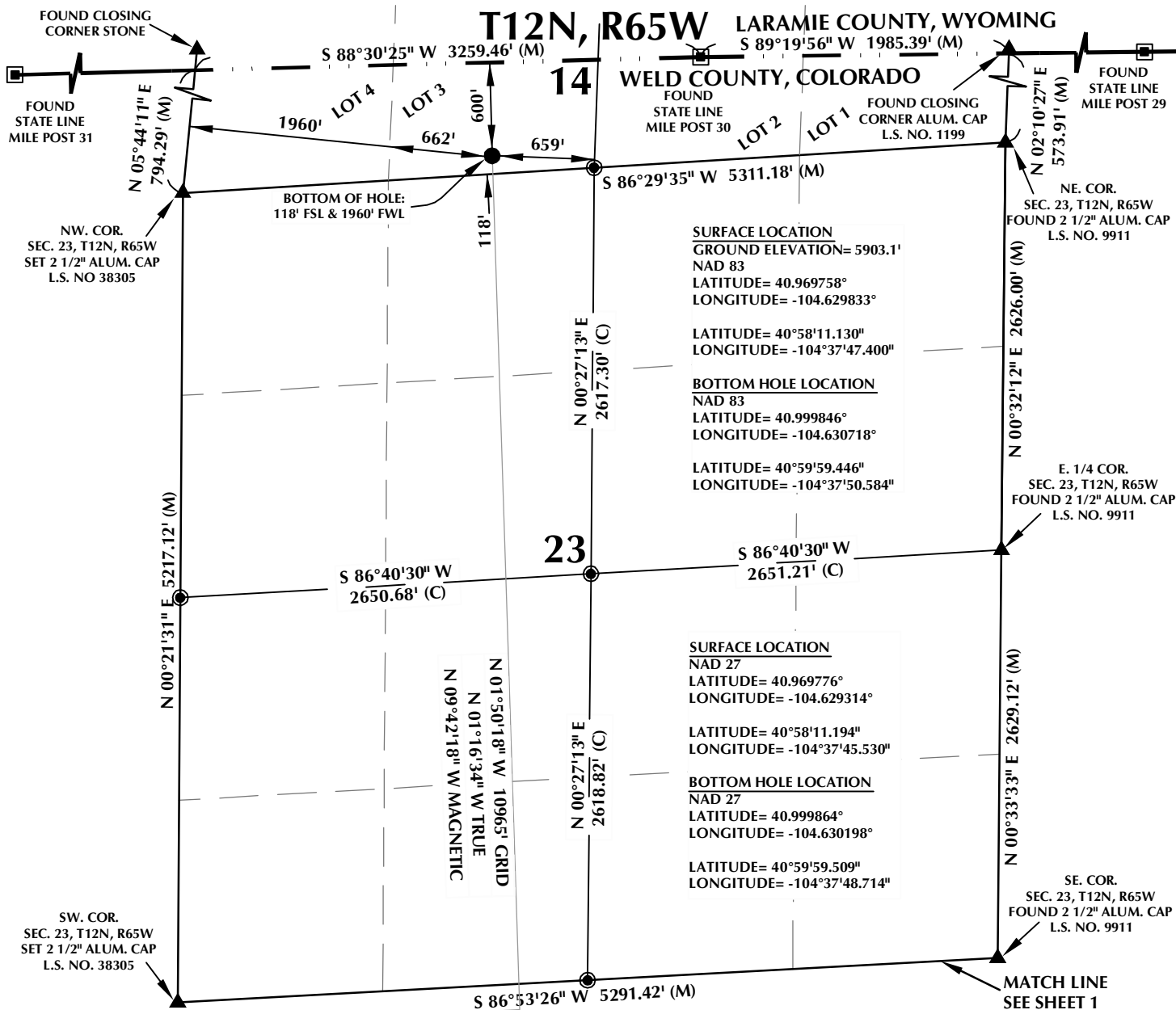
**CONSULTING, LLC**

SHERIDAN OFFICE  
1095 Saberton Avenue  
Sheridan, Wyoming 82801  
Phone 307-674-0609

LOVELAND OFFICE  
1635 Foxtrail Drive, Suite 204  
Loveland, Colorado 80538  
Phone 970-776-4331

DRAFTED BY:	LMO	CHECKED BY:	BJR	SHEET NO:
DATE DRAFTED:	3/10/15	DATE SURVEYED:	12/16/14	1
REVISED:		FILE NAME:	14-52	1 OF 2

K:\ANADARKO\2014\12-52\_RESOLUTION\_PROSPECT\_WELLS\CO\PLATS\RESOLUTION\_12-65-26-23-3NH\RES\_FED\_12-65-26-23-3NH.dwg, 3/13/2015 3:36:35 PM, lba



#### CERTIFICATE OF SURVEYOR:

THIS IS TO CERTIFY THAT THE ABOVE PLAT WAS PREPARED FROM FIELD NOTES OF ACTUAL SURVEY MADE BY ME OR UNDER MY SUPERVISION AND THAT THE SAME ARE TRUE AND CORRECT TO THE BEST OF MY KNOWLEDGE AND BELIEF. THIS CERTIFICATE DOES NOT REPRESENT A LAND SURVEY PLAT OR IMPROVEMENT SURVEY PLAT AS DEFINED BY C.S. 38-51-102 AND CANNOT BE RELIED UPON TO DETERMINE OWNERSHIP.

*Benjamin J. Reenders*  
BENJAMIN J. REENDERS  
PROFESSIONAL LAND SURVEYOR  
COLORADO REGISTRATION NUMBER 14336

NOTICE:  
ACCORDING TO COLORADO STATE LAW YOU MUST COMMENCE ANY LEGAL ACTION BASED UPON ANY DEFECT IN THIS SURVEY WITHIN THREE YEARS AFTER YOU FIRST DISCOVER SUCH DEFECT. IN NO EVENT MAY ANY ACTION BASED UPON ANY DEFECT IN THIS SURVEY BE COMMENCED MORE THAN TEN YEARS FROM THE DATE ON THE CERTIFICATION SHOWN HEREON.

#### NOTES:

- ▲ INDICATES FOUND SECTION CORNER
- INDICATES CALCULATED CORNER
- INDICATES STATE LINE MONUMENT
- ELEVATION BASED ON NAVD88 (GEOID09)
- BASIS OF BEARING DERIVED FROM COLORADO COORDINATE SYSTEM 1983 NORTH ZONE UNLESS OTHERWISE NOTED.
- ALL MEASURED DISTANCES ARE GRID.
- COMBINED SCALE FACTOR: .99975766
- OPERATOR: ROB WILSON / PDOP = 1.6
- SEE ADDENDUM TO WELL LOCATION CERTIFICATE FOR EXISTING IMPROVEMENTS WITHIN 500' OF THE WELL PAD.
- WELL FOOTAGES ARE MEASURED AT RIGHT ANGLES TO THE SECTION LINES.
- THE BOTTOM OF HOLE BEARS N01°50'18"W, 10965' FROM THE SURFACE LOCATION.

WELL PAD - RESOLUTION FED 12-65-26-23-3NH

RESOLUTION FED 12-65-26-23-3NH  
WELL LOCATION CERTIFICATE  
397' FNL & 2340' FWL NENW (SURFACE)  
LOCATED IN SECTION 35  
118' FSL & 1960' FWL LOT 3 (SESW) (BOTTOM)  
LOCATED IN SECTION 14  
T12N, R65W, 6TH P.M.  
WELD COUNTY, COLORADO

Anadarko E&P  
Onshore LLC  
1099 18th Street  
Denver, Colorado 80202



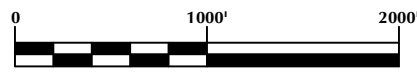
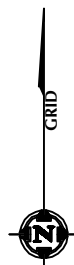
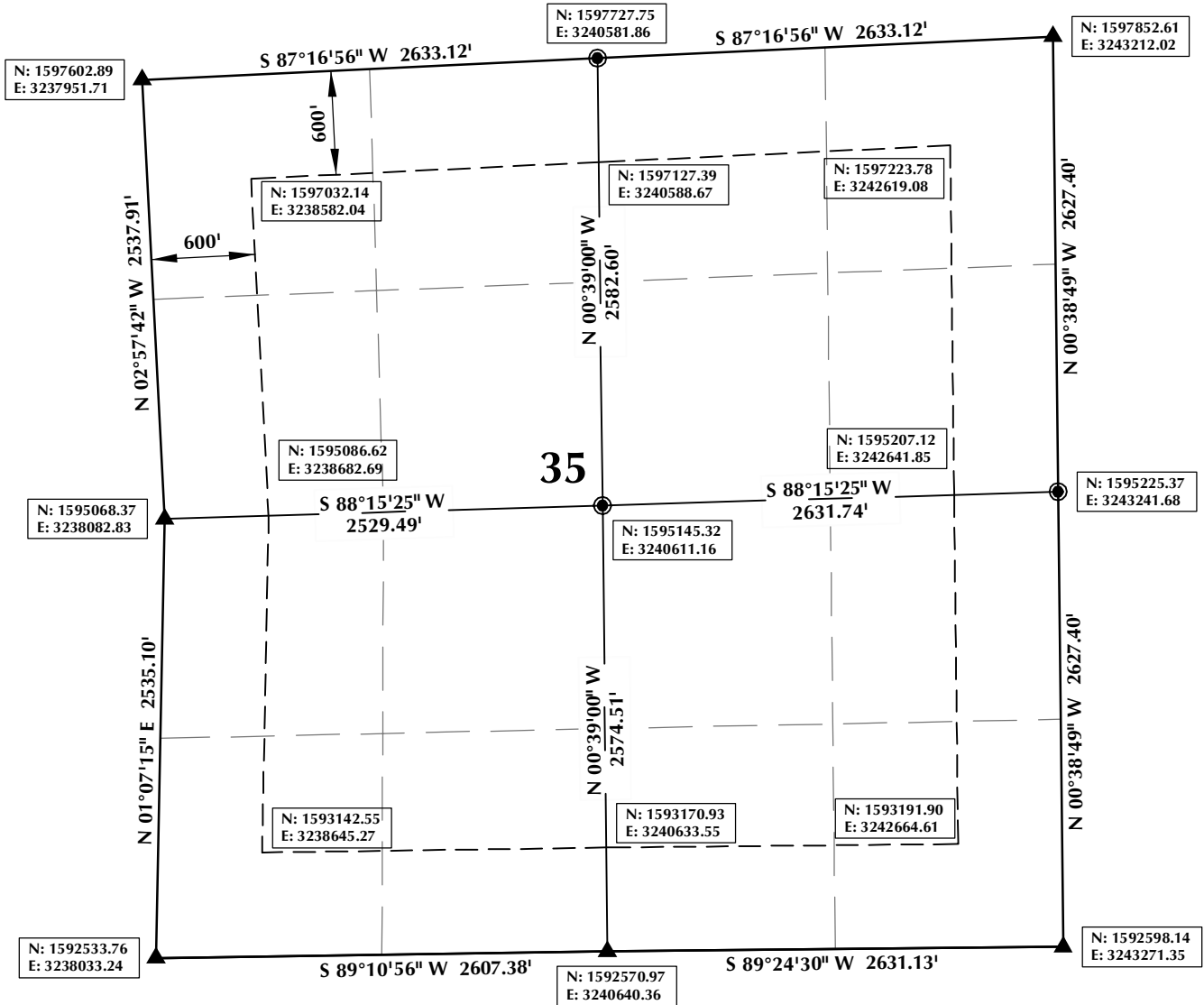
CONSULTING, LLC

SHERIDAN OFFICE  
1095 Saberton Avenue  
Sheridan, Wyoming 82801  
Phone 307-674-0609

LOVELAND OFFICE  
1635 Foxtrail Drive, Suite 204  
Loveland, Colorado 80538  
Phone 970-776-4331

DRAFTED BY:	LMO	CHECKED BY:	BJR	SHEET NO:
DATE DRAFTED:	3/10/15	DATE SURVEYED:	12/16/14	2
REVISED:		FILE NAME:	14-52	2 OF 2

# COORDINATE EXHIBIT SECTION 35, T12N, R65W



SCALE: 1" = 1000'

## NOTES:

- ▲ INDICATES FOUND SECTION CORNER
- INDICATES CALCULATED CORNER
- BEARINGS ARE BASED ON GRID NORTH, COLORADO STATE PLANE NORTH GRID (NAD 83)
- DRAWING N/E COORDINATES ARE BASED ON COLORADO STATE PLANE NORTH GRID (NAD 83)

COORDINATE EXHIBIT  
SECTION 35, T12N, R65W, 6TH P.M.  
WELD COUNTY, COLORADO

Anadarko E&P  
Onshore LLC  
1099 18th Street  
Denver, Colorado 80202



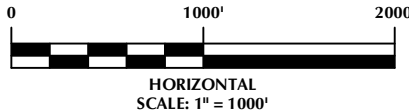
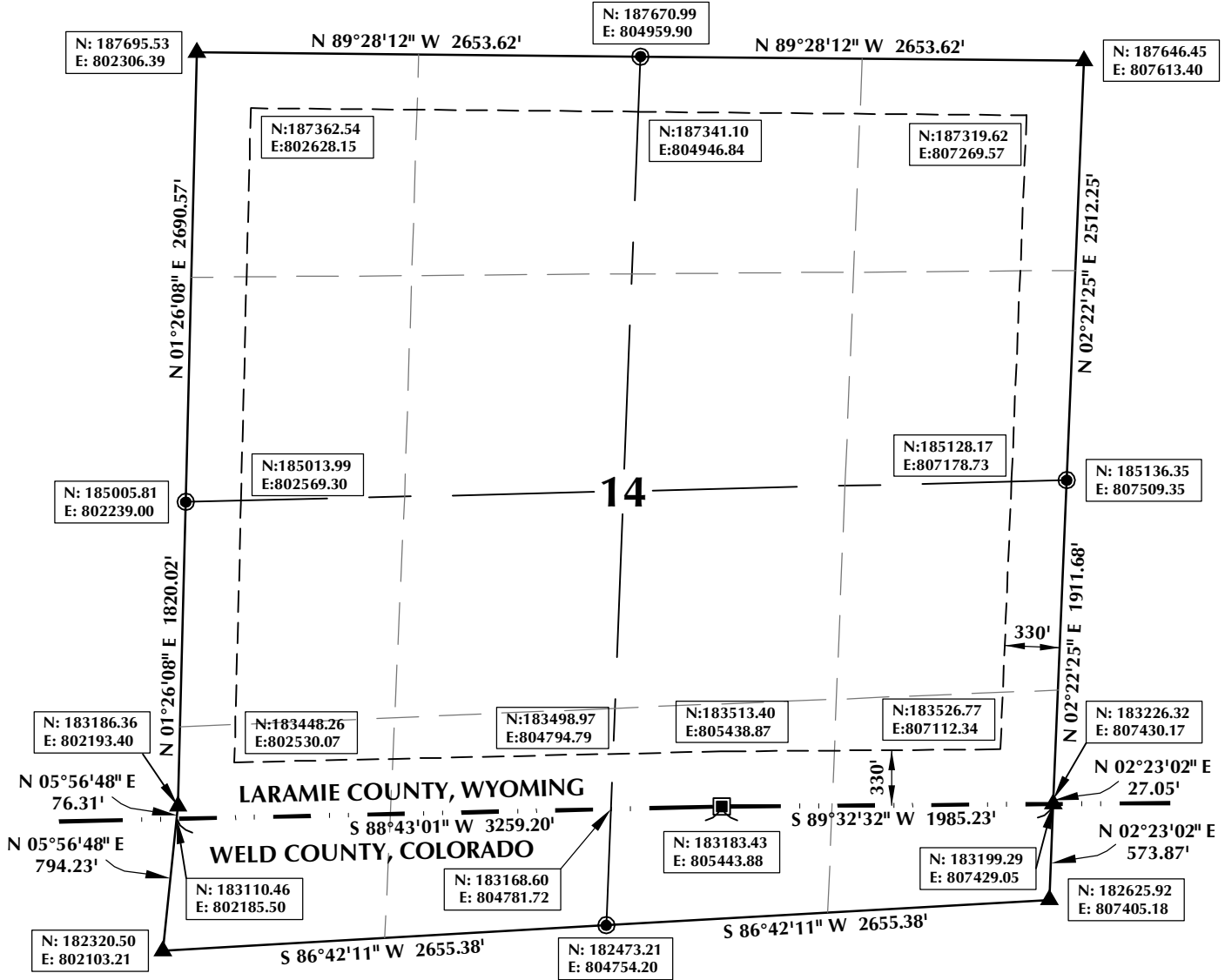
## CONSULTING, LLC

SHERIDAN OFFICE  
1095 Saberton Avenue  
Sheridan, Wyoming 82801  
Phone 307-674-0609

LOVELAND OFFICE  
1635 Foxtrail Drive, Suite 204  
Loveland, Colorado 80538  
Phone 970-776-4331

DRAFTED BY:	LMO	CHECKED BY:	BJR
DATE DRAFTED:	3/10/15	DATE SURVEYED:	12/16/14
REVISED:		FILE NAME:	14-52

# COORDINATE EXHIBIT SECTION 14, T12N, R65W



## NOTES:

1. ▲ INDICATES SECTION CORNER
2. ● INDICATES CALCULATED CORNER POSITION FROM RECORD
3. ■ INDICATES STATE LINE MONUMENT
4. BEARINGS ARE BASED ON GRID NORTH, WYOMING COORDINATE SYSTEM NAD83, EAST ZONE
5. DRAWING N/E COORDINATES ARE BASED ON WYOMING COORDINATE SYSTEM NAD83, EAST ZONE

COORDINATE EXHIBIT  
SECTION 14, T12N, R65W, 6TH P.M.  
LARAMIE COUNTY, WYOMING

Anadarko E&P  
Onshore LLC  
1099 18th Street  
Denver, Colorado 80202



## CONSULTING, LLC

SHERIDAN OFFICE  
1095 Saberton Avenue  
Sheridan, Wyoming 82801  
Phone 307-674-0609

LOVELAND OFFICE  
1635 Foxtrail Drive, Suite 204  
Loveland, Colorado 80538  
Phone 970-776-4331

DRAFTED BY:	APF	CHECKED BY:	BJR
DATE DRAFTED:	6/20/14	DATE SURVEYED:	6/18/14
REVISED:	3/3/15	FILE NAME:	14-49