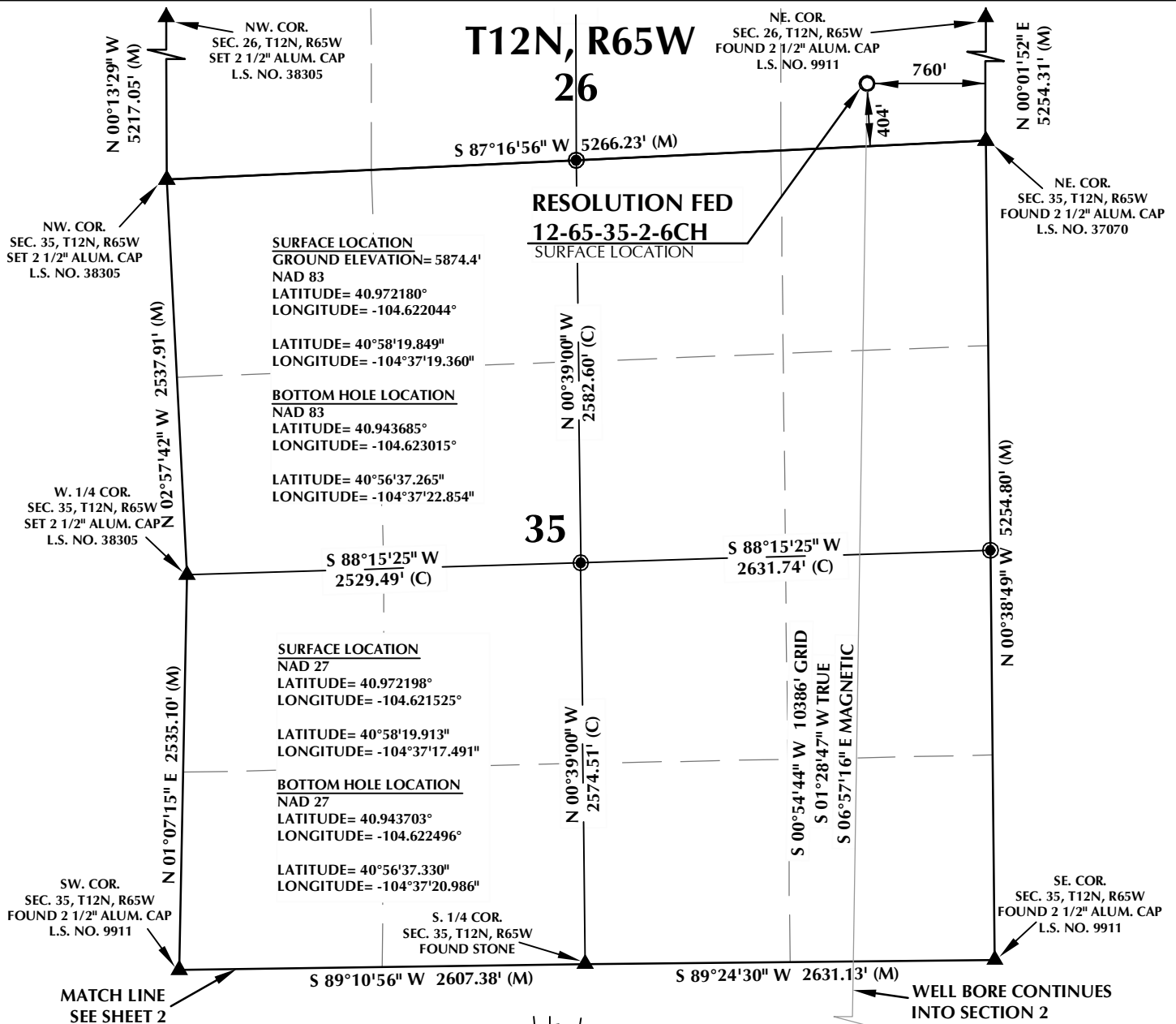


K:\ANADARKO\2014\12-65-35-2-7NH\RESOLUTION 12-65-35-2-7NH\FED 12-65-35-2-7NH.dwg, 3/13/2015 12:26:31 PM, lra



WELL PAD - RESOLUTION FED 12-65-35-2-7NH

RESOLUTION FED 12-65-35-2-6CH
WELL LOCATION CERTIFICATE
404' FSL & 760' FEL SESE (SURFACE)
LOCATED IN SECTION 26
T12N, R65W, 6TH P.M.
600' FSL & 935' FEL SESE (BOTTOM)
LOCATED IN SECTION 2
T11N, R65W, 6TH P.M.
WELD COUNTY, COLORADO

**Anadarko E&P
Onshore LLC**
1099 18th Street
Denver, Colorado 80202



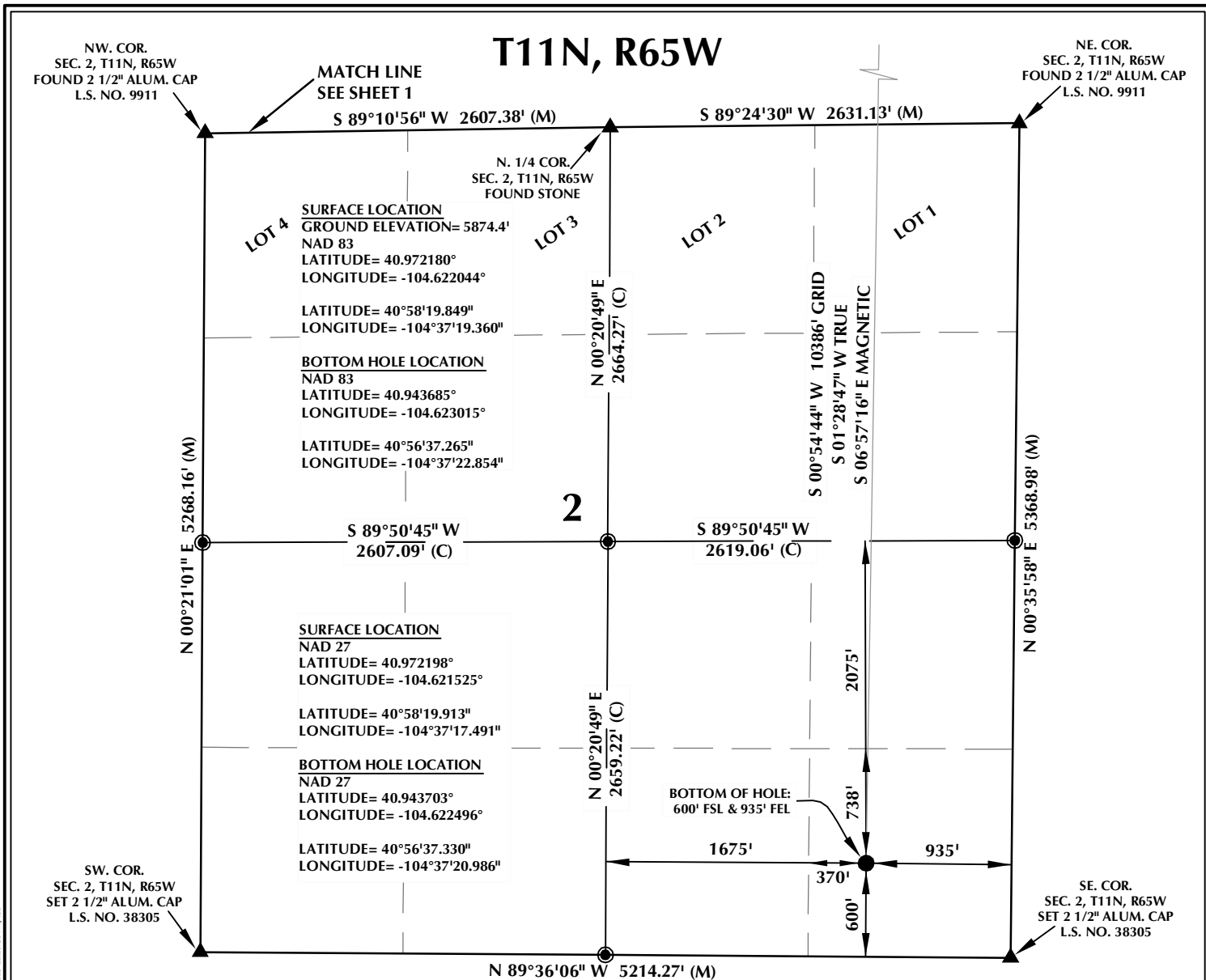
CONSULTING, LLC

SHERIDAN OFFICE
1095 Saberton Avenue
Sheridan, Wyoming 82801
Phone 307-674-0609

LOVELAND OFFICE
1635 Foxtrail Drive, Suite 204
Loveland, Colorado 80538
Phone 970-776-4331

DRAFTED BY:	LMO	CHECKED BY:	BJR	SHEET NO:
DATE DRAFTED:	3/10/15	DATE SURVEYED:	12/16/14	1
REVISED:		FILE NAME:	14-52	1 OF 2

K:\ANADARKO\2014\12-65-35-2-7NH\RESOLUTION 12-65-35-2-7NH.DWG, 3/13/2015 12:26:36 PM, lra

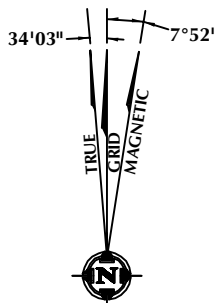


CERTIFICATE OF SURVEYOR:

THIS IS TO CERTIFY THAT THE ABOVE PLAT WAS PREPARED FROM FIELD NOTES OF ACTUAL SURVEY MADE BY ME OR UNDER MY SUPERVISION AND THAT THE SAME ARE TRUE AND CORRECT TO THE BEST OF MY KNOWLEDGE AND BELIEF. THIS CERTIFICATE DOES NOT REPRESENT A LAND SURVEY PLAT OR IMPROVEMENT SURVEY PLAT AS DEFINED BY C.S. 38-51-102 AND CANNOT BE RELIED UPON TO DETERMINE OWNERSHIP.

Benjamin J. Reenders
BENJAMIN J. REENDERS
PROFESSIONAL LAND SURVEYOR
COLORADO REGISTRATION NUMBER 4836
3/10/15

NOTICE:
ACCORDING TO COLORADO STATE LAW YOU MUST COMMENCE ANY LEGAL ACTION BASED UPON ANY DEFECT IN THIS SURVEY WITHIN THREE YEARS AFTER YOU FIRST DISCOVER SUCH DEFECT. IN NO EVENT MAY ANY ACTION BASED UPON ANY DEFECT IN THIS SURVEY BE COMMENCED MORE THAN TEN YEARS FROM THE DATE ON THE CERTIFICATION SHOWN HEREON.



NOTE:
MAGNETIC NORTH IS CURRENT AS OF 3/5/2015.
MAGNETIC NORTH CHANGES WEST 0°06' PER YEAR.



SCALE: 1" = 1000'

NOTES:

- ▲ INDICATES FOUND SECTION CORNER
- INDICATES CALCULATED CORNER
- INDICATES STATE LINE MONUMENT
- ELEVATION BASED ON NAVD88 (GEOID09)
- BASIS OF BEARING DERIVED FROM COLORADO COORDINATE SYSTEM 1983 NORTH ZONE UNLESS OTHERWISE NOTED.
- ALL MEASURED DISTANCES ARE GRID.
- COMBINED SCALE FACTOR: .99975766
- OPERATOR: ROB WILSON / PDOP = 1.3
- SEE ADDENDUM TO WELL LOCATION CERTIFICATE FOR EXISTING IMPROVEMENTS WITHIN 500' OF THE WELL PAD.
- WELL FOOTAGES ARE MEASURED AT RIGHT ANGLES TO THE SECTION LINES.
- THE BOTTOM OF HOLE BEARS S00°54'44"W, 10386' FROM THE SURFACE LOCATION.

WELL PAD - RESOLUTION FED 12-65-35-2-7NH

RESOLUTION FED 12-65-35-2-6CH
WELL LOCATION CERTIFICATE
404' FSL & 760' FEL SESE (SURFACE)
LOCATED IN SECTION 26
T12N, R65W, 6TH P.M.
600' FSL & 935' FEL SESE (BOTTOM)
LOCATED IN SECTION 2
T11N, R65W, 6TH P.M.
WELD COUNTY, COLORADO

**Anadarko E&P
Onshore LLC**
1099 18th Street
Denver, Colorado 80202



CONSULTING, LLC

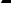
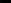
SHERIDAN OFFICE
1095 Saberton Avenue
Sheridan, Wyoming 82801
Phone 307-674-0609

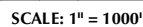
LOVELAND OFFICE
1635 Foxtrail Drive, Suite 204
Loveland, Colorado 80538
Phone 970-776-4331

DRAFTED BY:	LMO	CHECKED BY:	BJR	SHEET NO:
DATE DRAFTED:	3/10/15	DATE SURVEYED:	12/16/14	2
REVISED:		FILE NAME:	14-52	2 OF 2

K:\ANADARKO\2014_52_RESOLUTION_PROSPECT_WELLS\COMPLATS\RESOLUTION 12-65-35-2\SECTION 26 EXHIBIT.dwg, 3/17/2015 11:08:01 AM, jake



1.  INDICATES FOUND SECTION CORNER
2.  INDICATES CALCULATED CORNER
3. BEARINGS ARE BASED ON GRID NORTH,
COLORADO STATE PLANE NORTH GRID (NAD 83)
4. DRAWING N/E COORDINATES ARE BASED ON COLORADO
STATE PLANE NORTH GRID (NAD 83)



LOVELAND OFFICE
1635 Foxtrail Drive, Suite 204
Loveland, Colorado 80538
Phone 970-776-4331

DRAFTED BY:	LMO	CHECKED BY:	BJR
DATE DRAFTED:	3/10/15	DATE SURVEYED:	12/16/14
REVISED:		FILE NAME:	14-52