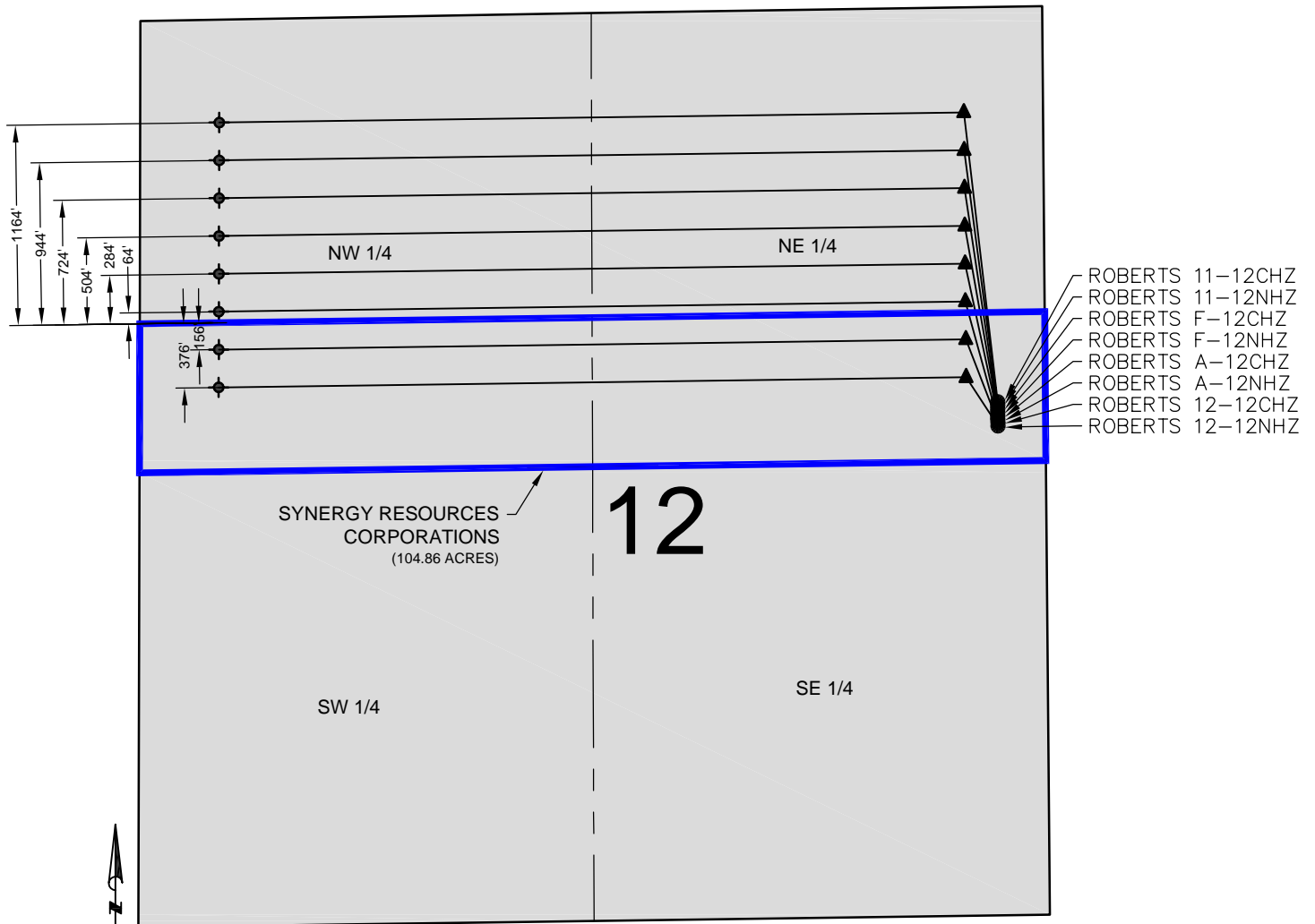


ROBERTS 12-E PAD LEASE DRAWING



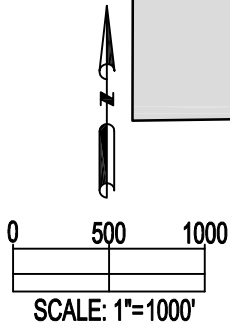
ROBERTS 11-12CHZ
ROBERTS 11-12NHZ
ROBERTS F-12CHZ
ROBERTS F-12NHZ
ROBERTS A-12CHZ
ROBERTS A-12NHZ
ROBERTS 12-12CHZ
ROBERTS 12-12NHZ

SYNERGY RESOURCES
CORPORATIONS
(104.86 ACRES)

12

SW 1/4

SE 1/4



NOTES:

ROBERTS 11-12CHZ TO BE AT 2297' FNL, 277' FEL.
BOTTOM HOLE AT 598' FNL & 460' FWL
ROBERTS 11-12NHZ TO BE AT 2317' FNL, 277' FEL.
BOTTOM HOLE AT 818' FNL & 460' FWL
ROBERTS F-12CHZ TO BE AT 2337' FNL, 277' FEL.
BOTTOM HOLE AT 1038' FNL & 460' FWL
ROBERTS F-12NHZ TO BE AT 2357' FNL, 277' FEL.
BOTTOM HOLE AT 1258' FNL & 460' FWL
ROBERTS A-12CHZ TO BE AT 2377' FNL, 277' FEL.
BOTTOM HOLE AT 1478' FNL & 460' FWL
ROBERTS A-12NHZ TO BE AT 2397' FNL, 277' FEL.
BOTTOM HOLE AT 1698' FNL & 460' FWL
ROBERTS 12-12CHZ TO BE AT 2417' FNL, 277' FEL.
BOTTOM HOLE AT 1918' FNL & 460' FWL
ROBERTS 12-12NHZ TO BE AT 2437' FNL, 277' FEL.
BOTTOM HOLE AT 2138' FNL & 460' FWL

DISTANCE FROM COMPLETED PORTION OF WELLBORE TO LEASE LINE:

ROBERTS 11-12CHZ 1164' S
ROBERTS 11-12NHZ 944' S
ROBERTS F-12CHZ 724' S
ROBERTS F-12NHZ 504' S
ROBERTS A-12CHZ 284' S
ROBERTS A-12NHZ 64' S
ROBERTS 12-12CHZ 156' N
ROBERTS 12-12NHZ 376' N

LEGEND

- = PROPOSED WELL
- ▲ = LANDING POINT
- ⊙ = BOTTOM HOLE
- = LEASE LINES

PREPARED BY:



FIELD DATE:
07-29-14

DRAWING DATE:
02-06-15

BY:
KAD

CHECKED BY:
WDW

SITE NAME:

ROBERTS 12-E PAD

SURFACE LOCATION:

SE 1/4 NE 1/4, SEC. 12, T7N, R67W, 6TH P.M.
WELD COUNTY, COLORADO

PREPARED FOR:

