

T5S, R65W, 6th P.M.

ConocoPhillips Company

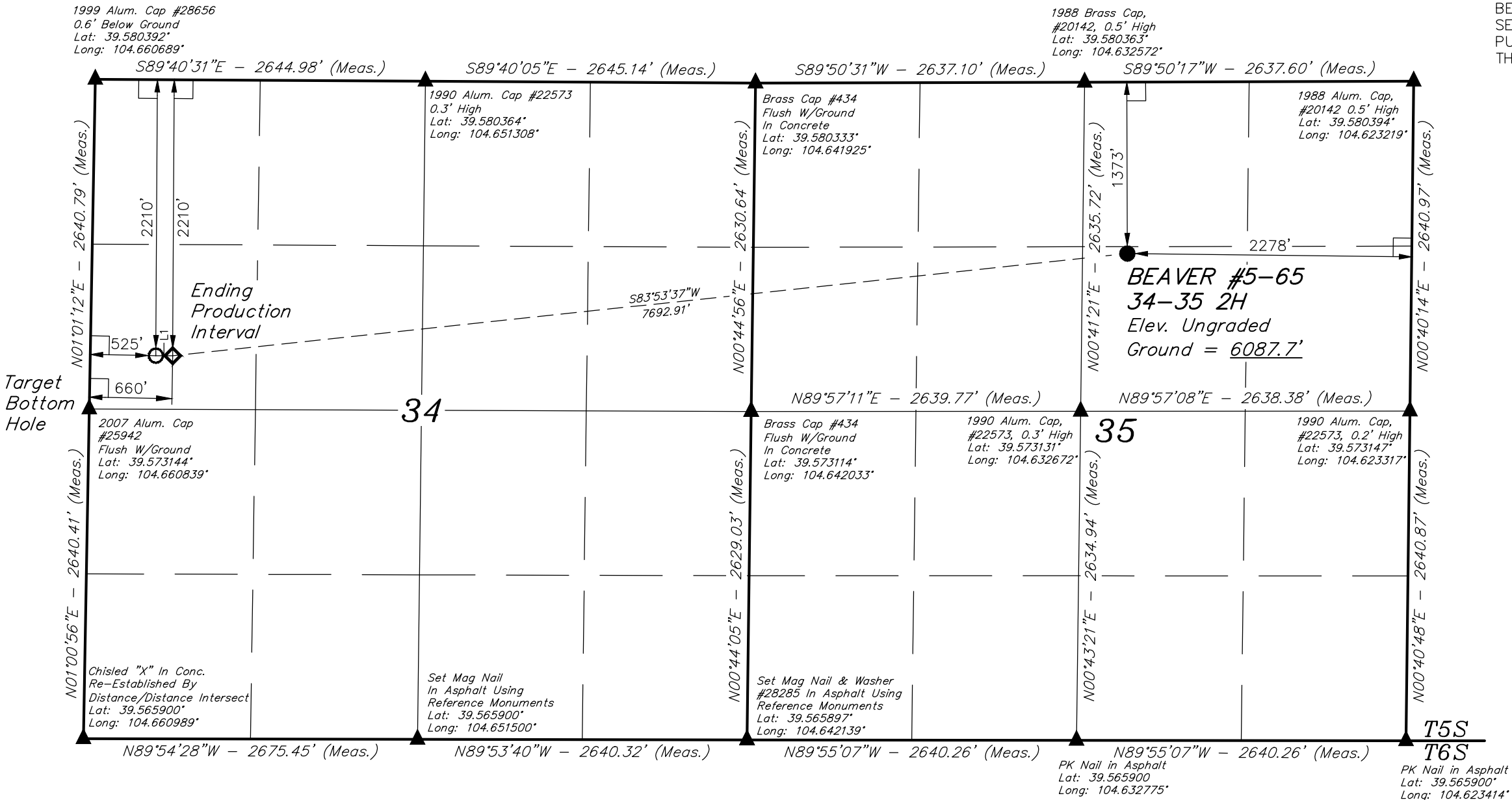
BEAVER #5-65 34-35 2H
SW 1/4 NE 1/4, SECTION 35, T5S, R65W, 6th P.M.
ARAPAHOE COUNTY, COLORADO

BASIS OF BEARINGS

BASIS OF BEARINGS IS A G.P.S. OBSERVATION

BASIS OF ELEVATION

BENCHMARK 374 LOCATED ON THE SECTION LINE BETWEEN SECTIONS 12 & 13, T5S, R64W, 6th. P.M., TAKEN FROM 1988 PUBLISHED DATUM BY THE UNITED STATES DEPARTMENT OF THE INTERIOR, GEOLOGICAL SURVEY AS BEING 6054.61 FEET.



LEGEND:

- 90° SYMBOL
- PROPOSED WELLHEAD.
- TARGET BOTTOM HOLE.
- SECTION CORNERS LOCATED.
- PRODUCTION INTERVAL.

NAD 83 (TARGET BOTTOM HOLE) LATITUDE = 39°34'27.56" (39.574322) LONGITUDE = 104°39'32.23" (104.658953)	NAD 83 (ENDING PRODUCTION INTERVAL) LATITUDE = 39°34'27.55" (39.574319) LONGITUDE = 104°39'30.50" (104.658472)	NAD 83 (SURFACE LOCATION) LATITUDE = 39°34'35.76" (39.576600) LONGITUDE = 104°37'52.86" (104.631350)
NAD 27 (TARGET BOTTOM HOLE) LATITUDE = 39°34'27.60" (39.574333) LONGITUDE = 104°39'30.33" (104.658425)	NAD 27 (ENDING PRODUCTION INTERVAL) LATITUDE = 39°34'27.59" (39.574331) LONGITUDE = 104°39'28.61" (104.657947)	NAD 27 (SURFACE LOCATION) LATITUDE = 39°34'35.80" (39.576611) LONGITUDE = 104°37'50.97" (104.630825)
STATE PLANE NAD 83 N: 1635172.24 E: 3237076.54	STATE PLANE NAD 83 N: 1635172.96 E: 3237211.50	STATE PLANE NAD 83 N: 1636075.10 E: 3244848.91
STATE PLANE NAD 27 N: 635165.27 E: 2237230.97	STATE PLANE NAD 27 N: 635165.99 E: 2237365.94	STATE PLANE NAD 27 N: 636068.27 E: 2245003.28



UELS, LLC
Corporate Office * 85 South 200 East
Vernal, UT 84078 * (435) 789-1017

SURVEYED BY: DALLAS NIELSEN, L.P.	DATE: 06-30-14
DRAWN BY: K.B.	DATE DRAWN: 07-15-14
SCALE: 1" = 1000'	REVISED: 01-20-15 T.C.

WELL LOCATION PLAT

T5S, R65W, 6th P.M.

ConocoPhillips Company

BEAVER #5-65 34-35 2H
SW 1/4 NE 1/4, SECTION 35, T5S, R65W, 6th P.M.
ARAPAHOE COUNTY, COLORADO

BASIS OF BEARINGS

BASIS OF BEARINGS IS A G.P.S. OBSERVATION

BASIS OF ELEVATION

BENCHMARK 374 LOCATED ON THE SECTION LINE BETWEEN SECTIONS 12 & 13, T5S, R64W, 6th. P.M., TAKEN FROM 1988 PUBLISHED DATUM BY THE UNITED STATES DEPARTMENT OF THE INTERIOR, GEOLOGICAL SURVEY AS BEING 6054.61 FEET.

1999 Alum. Cap #28656
0.6' Below Ground
Lat: 39.580392°
Long: 104.660689°

1990 Alum. Cap #22573
0.3' High
Lat: 39.580364°
Long: 104.651308°

Brass Cap #434
Flush W/Ground
In Concrete
Lat: 39.580333°
Long: 104.641925°

1988 Brass Cap,
#20142, 0.5' High
Lat: 39.580363°
Long: 104.632572°

1988 Alum. Cap,
#20142, 0.5' High
Lat: 39.580394°
Long: 104.623219°

1990 Alum. Cap,
#22573, 0.2' High
Lat: 39.573147°
Long: 104.623317°

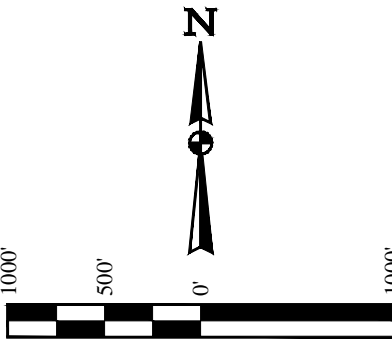
Chisled "X" In Conc.
Re-Established By
Distance/Distance Intersect
Lat: 39.565900°
Long: 104.660989°

Set Mag Nail
In Asphalt Using
Reference Monuments
Lat: 39.565900°
Long: 104.651500°

Set Mag Nail & Washer
#28285 In Asphalt Using
Reference Monuments
Lat: 39.565897°
Long: 104.642139°

PK Nail in Asphalt
Lat: 39.565900°
Long: 104.632775°

PK Nail in Asphalt
Lat: 39.565900°
Long: 104.623414°



LINE TABLE

LINE	DIRECTION	LENGTH
L1	N89°40'31"W	135.01'

CERTIFICATE

THIS IS TO CERTIFY THAT THE ABOVE PLAT WAS PREPARED FROM FIELD NOTES OF ACTUAL SURVEYS MADE BY ME OR UNDER MY SUPERVISION, AND THAT THE SAME ARE TRUE AND CORRECT TO THE BEST OF MY KNOWLEDGE AND BELIEF.

REGISTERED LAND SURVEYOR
REGISTRATION NO. 28285
STATE OF COLORADO

PDOP = 1.2

LEGEND:

- 90° SYMBOL
- PROPOSED WELLHEAD.
- TARGET BOTTOM HOLE.
- SECTION CORNERS LOCATED.
- PRODUCTION INTERVAL.

NAD 83 (TARGET BOTTOM HOLE) LATITUDE = 39°34'27.56" (39.574322) LONGITUDE = 104°39'32.23" (104.658953)	NAD 83 (ENDING PRODUCTION INTERVAL) LATITUDE = 39°34'27.55" (39.574319) LONGITUDE = 104°39'30.50" (104.658472)	NAD 83 (SURFACE LOCATION) LATITUDE = 39°34'35.76" (39.576600) LONGITUDE = 104°37'52.86" (104.631350)
NAD 27 (TARGET BOTTOM HOLE) LATITUDE = 39°34'27.60" (39.574333) LONGITUDE = 104°39'30.33" (104.658425)	NAD 27 (ENDING PRODUCTION INTERVAL) LATITUDE = 39°34'27.59" (39.574331) LONGITUDE = 104°39'28.61" (104.657947)	NAD 27 (SURFACE LOCATION) LATITUDE = 39°34'35.80" (39.576611) LONGITUDE = 104°37'50.97" (104.630825)
STATE PLANE NAD 83 N: 1635172.24 E: 3237076.54	STATE PLANE NAD 83 N: 1635172.96 E: 3237211.50	STATE PLANE NAD 83 N: 1636075.10 E: 3244848.91
STATE PLANE NAD 27 N: 635165.27 E: 2237230.97	STATE PLANE NAD 27 N: 635165.99 E: 2237365.94	STATE PLANE NAD 27 N: 636068.27 E: 2245003.28



UELS, LLC
Corporate Office * 85 South 200 East
Vernal, UT 84078 * (435) 789-1017

SURVEYED BY: DALLAS NIELSEN, L.P.	DATE: 06-30-14
DRAWN BY: K.B.	DATE DRAWN: 07-15-14
SCALE: 1" = 1000'	REVISED: 01-20-15 T.C.

SECTION BREAKDOWN