



Corporate Office

1775 Sherman Street, #3000
Denver, Colorado 80203
303.860.5800
www.pdce.com

February 6, 2015

Department of Natural Resources
Oil and Gas Conservation Commission
The Chancery Building
Attn: Matt Lepore
1120 Lincoln St., Suite 801
Denver, CO 80203

Re: **30 Day Certification Letter – Rule 318Ae**
Tarin Federal 32Y-214
SESE, Section 32-T4N-R66W, 6th PM
Weld County, Colorado

Dear Director,

PDC Energy, Inc. ("PDC") hereby certifies to the Director that a thirty (30-day) notice has been given by certified mail to all owners in the proposed wellbore spacing unit consisting to Sec 32: S2S2; Sec 31: S2SE in T4N R66W; Sec 5: N2NE, NENW in T3N R66W, 360 acres. We have not received any objections to such well location or proposed spacing unit, therefore, PDC hereby requests the Director to approve the well.

If you should have any questions or concerns regarding this permit, please contact the undersigned at (303) 860-5800.

Sincerely,

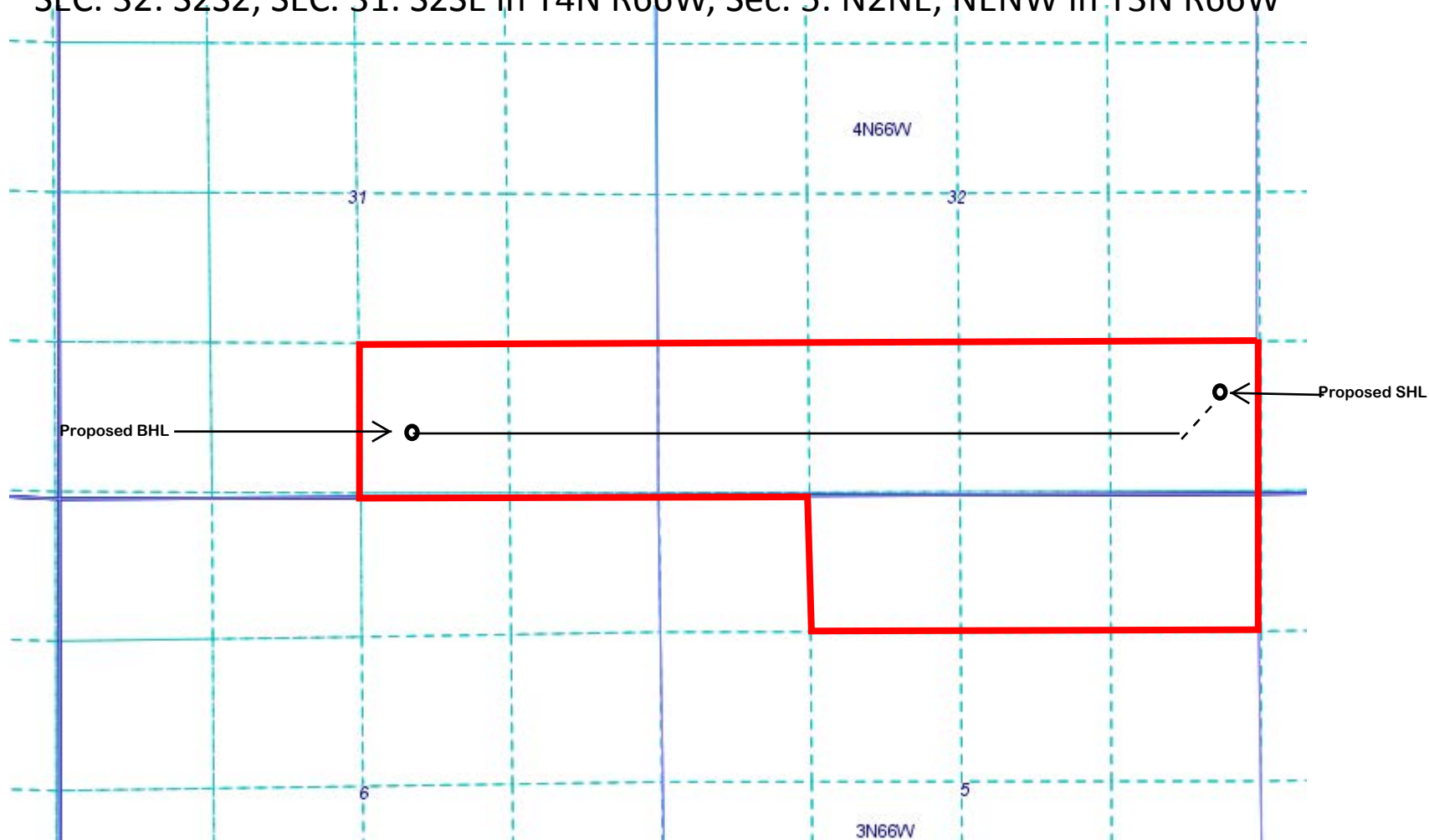
A handwritten signature in blue ink that reads "Kelsi Welch".

Kelsi Welch
Regulatory Analyst
PDC Energy

Tarin Federal 32Y-214

PROPOSED SPACING UNIT – 360 ACRES

SEC. 32: S2S2; SEC. 31: S2SE in T4N R66W; Sec. 5: N2NE, NENW in T3N R66W



PROPOSED SPACING UNIT

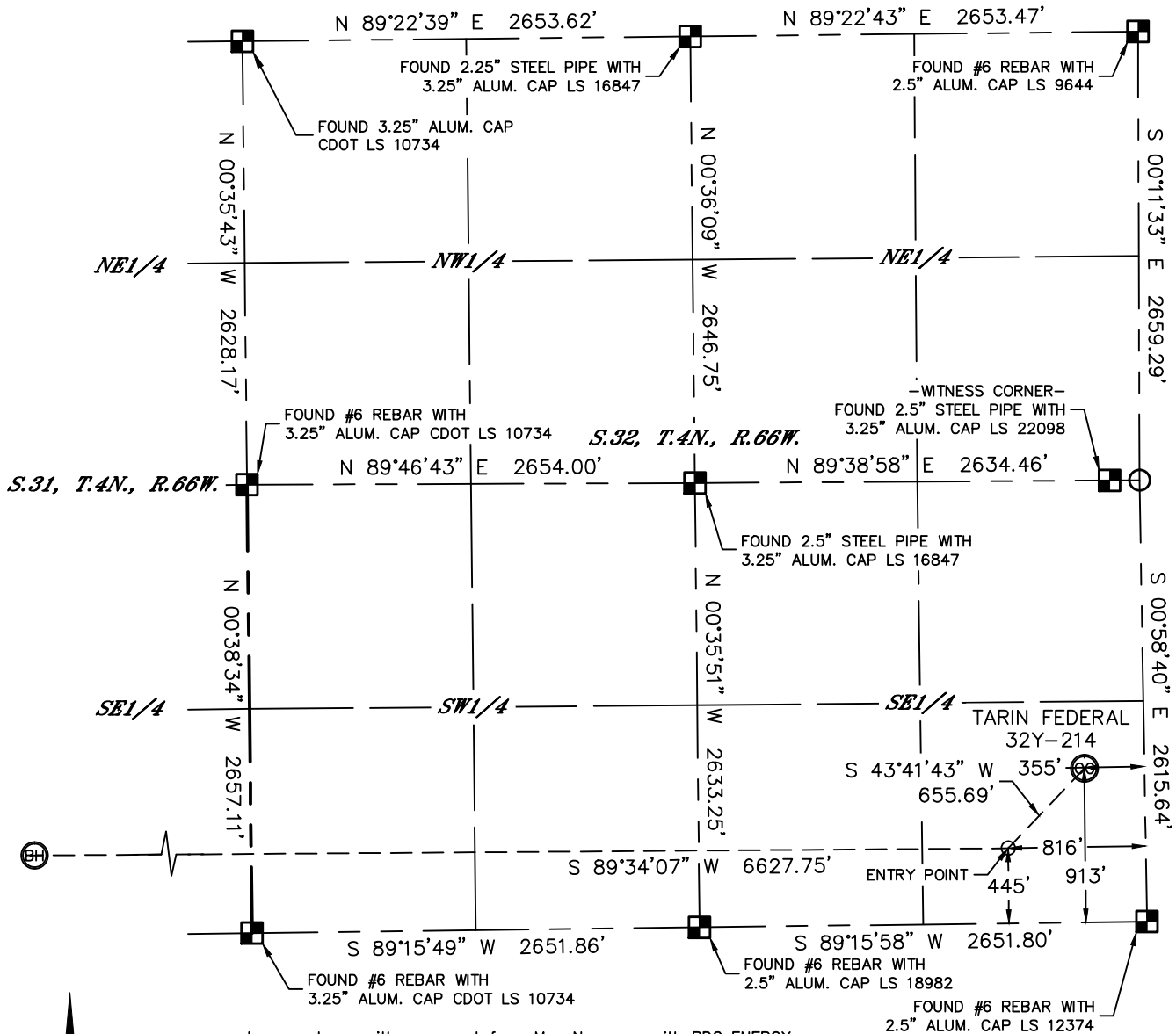


Lat40°, Inc. 1635 Foxtrail Drive, Suite 325 Loveland, CO 970-776-3321

WELL LOCATION CERTIFICATE

THIS MAP DOES NOT REPRESENT A BOUNDARY SURVEY

SECTION: 32
TOWNSHIP: 4N
RANGE: 66W



In accordance with a request from Mac Neumann with PDC ENERGY

Lat40°, Inc. has determined the surface location of the TARIN FEDERAL 32Y-214 to be 913' from the SOUTH line and 355' from the EAST line as measured at right angles from the section lines of Section 32, Township 4 North, Range 66 West and the bottom hole to be 485' from the SOUTH line and 2143' from the EAST line as measured at right angles from the section lines of Section 31, Township 4 North, Range 66 West of the Sixth Principal Meridian, County of Weld, State of Colorado.

I hereby state that this Well Location Certificate was prepared by me, or under my direct supervision, that the fieldwork was completed on 12/19/2013, for and on behalf of PDC ENERGY. That this is not a Land Survey Plat or an Improvement Survey Plat, and that it is not to be relied upon for establishment of fence, building, or other future improvement lines.

SURFACE LOCATION

LAT: 40.26340°N
LONG: 104.79317°W
PDOP: 2.9
ELEV: 4775'
1/4, 1/4: SE1/4SE1/4

BOTTOM HOLE

LAT: 40.26212°N
LONG: 104.81855°W

ENTRY POINT

LAT: 40.26211°N
LONG: 104.79481°W

LEGEND

- = ALIQUOT MONUMENT AS DESCRIBED
- = CALCULATED POSITION

Brian T. Brinkman, On behalf of Lat40°, Inc.

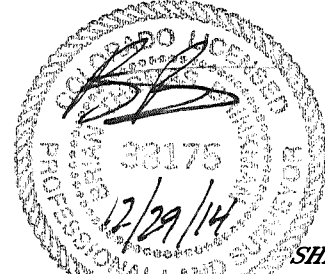
Colorado Licensed Professional
Land Surveyor No. 38175

DATE: 12/29/2014
PROJECT#: 2013166

SHEET 1 OF 2

NOTE:

- 1) Bearings shown are Grid Bearings of the Colorado State Plane Coordinate System, North Zone, North American Datum 1983/2007. The lineal dimensions as contained herein are based upon the "U.S. Survey Foot."
- 2) Ground elevations are based on an observed GPS elevation (NAVD 1988 DATUM).
- 3) IMPROVEMENTS: See LOCATION DRAWING for all visible improvements within 500' of disturbed area.
- 4) SURFACE USE: PASTURE
- 5) INSTRUMENT OPERATOR: BRIAN ROTTINGHAUS
- NEAREST CULTURAL ITEMS:
BUILDING: ±517' NW
BUILDING UNIT: ±637' NE
HIGH OCCUPANCY BUILDING UNIT: 5280'+
DESIGNATED OUTSIDE ACTIVITY AREA: 5280'+
PUBLIC ROAD: 351' E (CR29)
ABOVEGROUND UTILITY: 616' NE
RAILROAD: 794' NW
PROPERTY LINE: 355' E



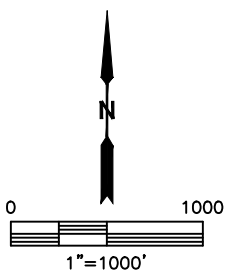
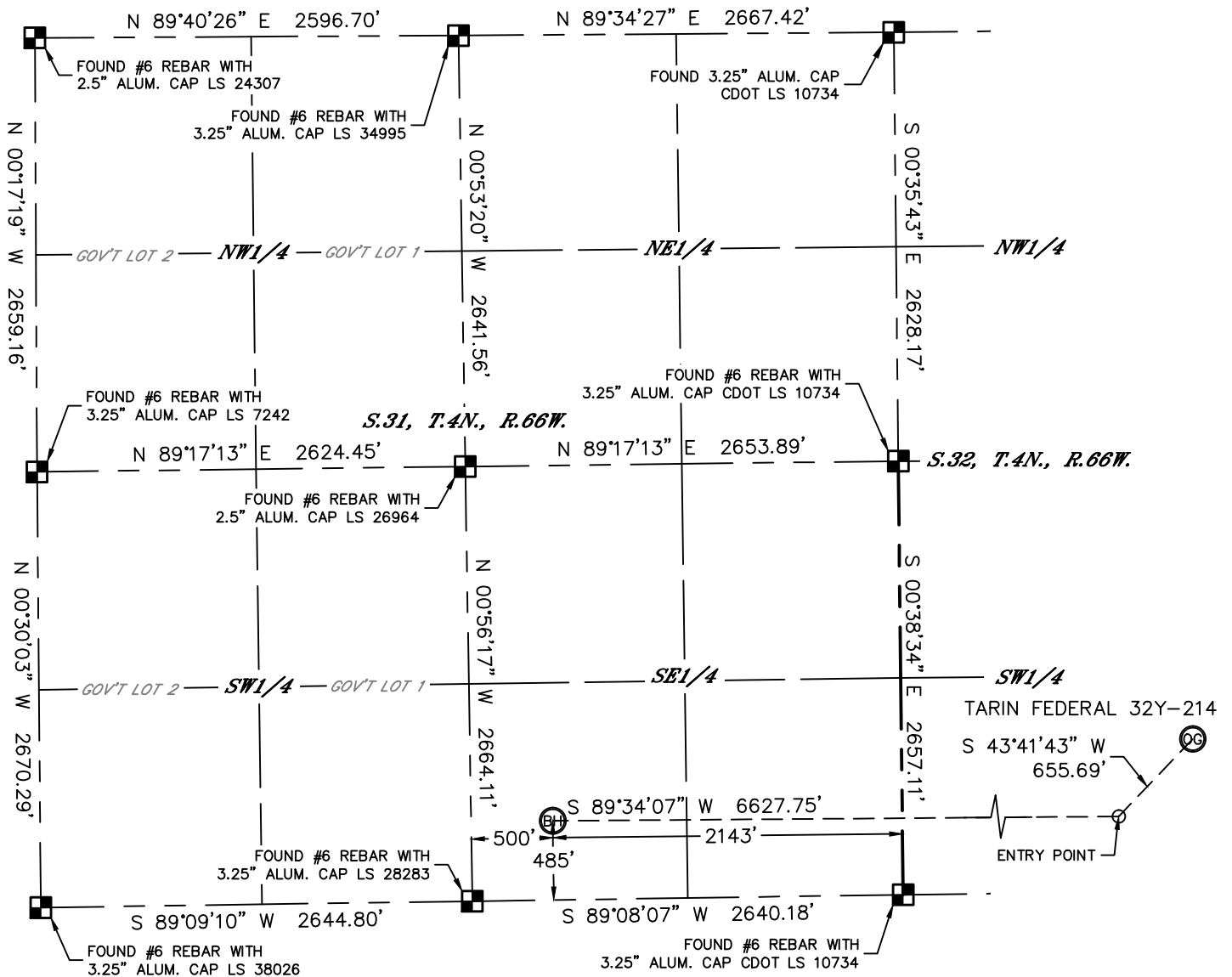


Lat40°, Inc. 1635 Foxtrail Drive, Suite 325 Loveland, CO 970-776-3321

WELL LOCATION CERTIFICATE

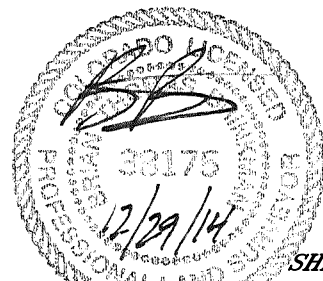
THIS MAP DOES NOT REPRESENT A BOUNDARY SURVEY

SECTION: 32
TOWNSHIP: 4N
RANGE: 66W



LEGEND

- = ALIQUOT MONUMENT AS DESCRIBED
- = CALCULATED POSITION



SHEET 2 OF 2

Brian T. Brinkman, on behalf of Lat40°, Inc.
Colorado Licensed Professional
Land Surveyor No. 38175
DATE: 12/29/2014
PROJECT#: 2013166