

WELLBORE DIAGRAM

Bayswater E&P LLC
Walton 8-25
SENE Sec 25-T7N-R67W
SHL: 1798' FNL, 659' FEL
BHL: 1798' FNL, 659' FEL
Weld County CO
05-123-34765

Directions: WCR 78 and WCR 23, East 1.0 miles and south into.

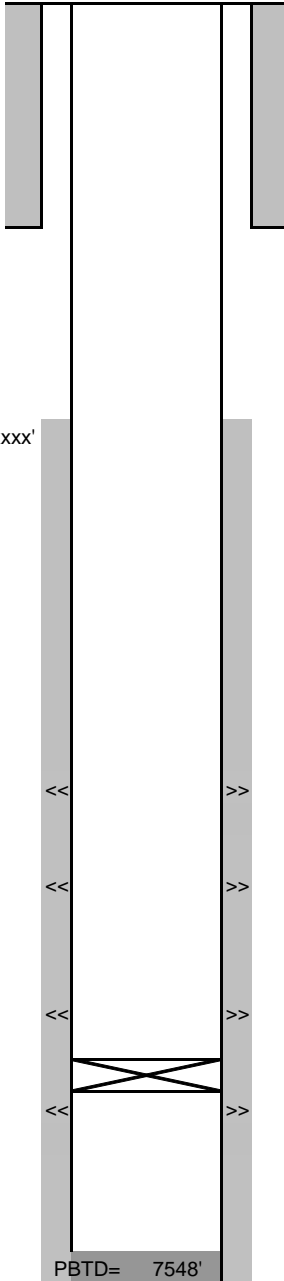
SE well on pad

Updated
12/15/2014
SMS

G.L.= 4970
K.B.= 4986
16

8-5/8" 24# set at 544'
Cmt'd w/ 220 sx to Surf.

CBL TOC: xxxx'



Niobrara "A" 7119'-7127" - 7132'-7140' 4spf, 64 holes on 11/28/14

Frac'd 11/28/14, = 4,202 bbls, 100,125 lbs 30/50, FR water

Niobrara "B" 7244' - 7264' 4spf, 80 holes on 11/26/14

Frac'd 11/28/14, 6,556 bbls, 179,263 lbs 30/50, FR water

Niobrara "C" 7326' - 7336' 4spf, 40 holes on 11/24/14

Frac'd 11/26/14, 4,448 bbls, 99,068 lbs 30/50, FR water

10K CIBP @ 7410' on 11/24/14

Codell: 7434'- 7450', 4 spf, 64 shots

Frac on 2/14/2013 with 257,673 gals of slickwater and 180,400 lbs of 30/50.

4 1/2", 11.6# LTC 7579' (7-7/8" O.H.)

Cmt'd w/ 865 sx

N ↑

• Walton 17-25

• Walton 8-25