

KERR-MCGEE OIL & GAS ONSHORE LP

Location: COLORADO Slot: SLOT#20 DOUTHIT 1N-27HZ (1500'FNL & 369'FEL, SEC.26)
 Field: WELD COUNTY (KERR MCGEE) Well: DOUTHIT 1N-27HZ
 Facility: SEC.26-T3N-R68W Wellbore: DOUTHIT 1N-27HZ PWB

Plot reference wellpath is DOUTHIT 1N-27HZ (REV-B.0) PWB

True vertical depths are referenced to XTREME 8 (17KB) (RKB)

Measured depths are referenced to XTREME 8 (17KB) (RKB)

XTREME 8 (17KB) (RKB) to Mean Sea Level: 4959 feet

Mean Sea Level to Mud line (At Slot: SLOT#20 DOUTHIT 1N-27HZ (1500'FNL & 369'FEL, SEC.26)): 0 feet

Coordinates are in feet referenced to Slot

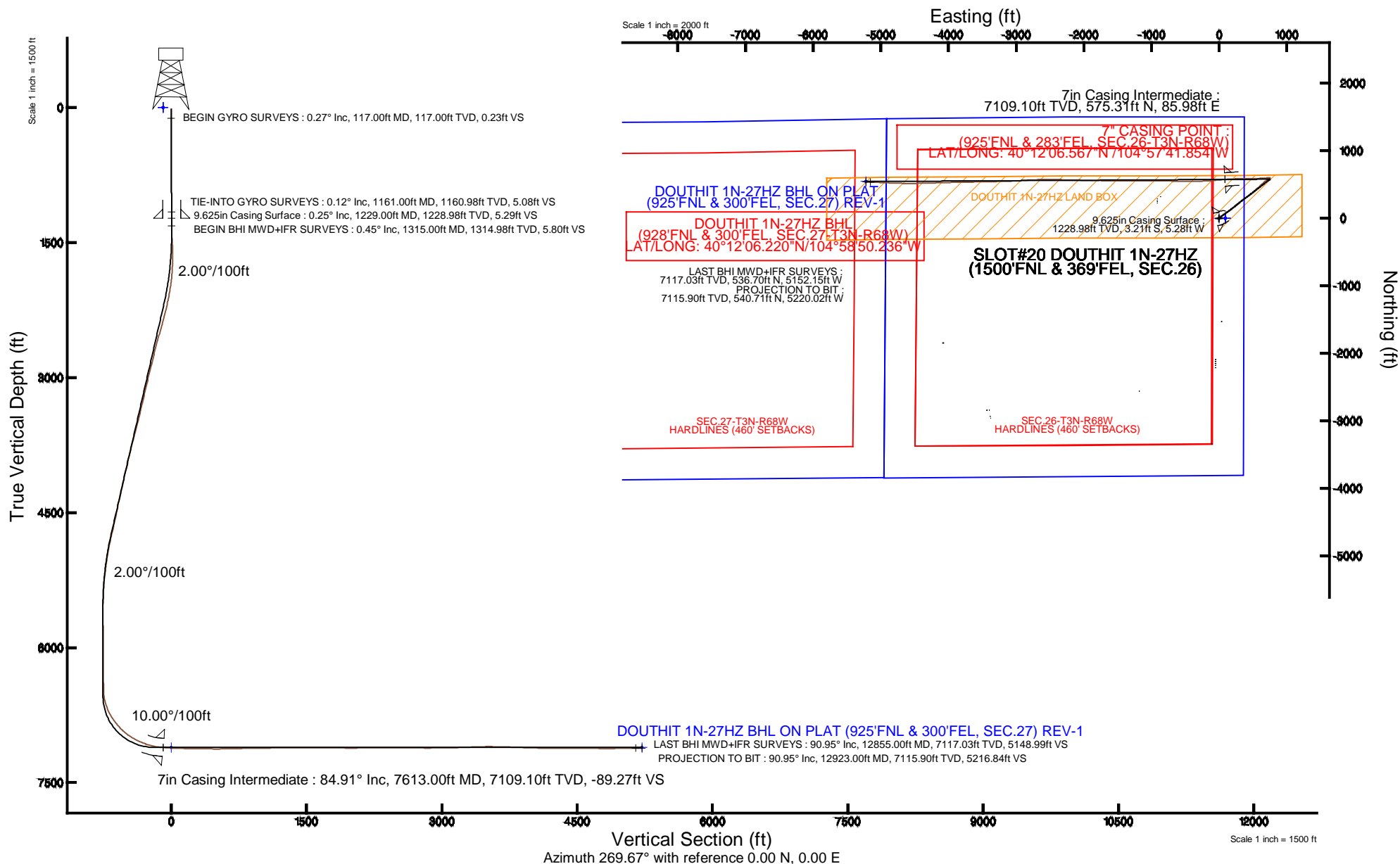
Grid System: NAD83 / Lambert Colorado SP, Northern Zone (501), US feet

North Reference: True north

Scale: True distance

Depths are in feet

Created by: amarc on 10/17/2014



Actual Wellpath Report

DOUTHIT 1N-27HZ AWP

Page 1 of 7

REFERENCE WELLPATH IDENTIFICATION

Operator	KERR-MCGEE OIL & GAS ONSHORE LP	Slot	SLOT#20 DOUTHIT 1N-27HZ (1500'FNL & 369'FEL, SEC.26)
Area	COLORADO	Well	DOUTHIT 1N-27HZ
Field	WELD COUNTY (KERR MCGEE)	Wellbore	DOUTHIT 1N-27HZ AWB
Facility	SEC.26-T3N-R68W		

REPORT SETUP INFORMATION

Projection System	NAD83 / Lambert Colorado SP, Northern Zone (501), US feet	Software System	WellArchitect® 4.0.0
North Reference	True	User	Amarcar
Scale	0.999957	Report Generated	10/17/2014 at 9:46:59 AM
Convergence at slot	n/a	Database/Source file	WellArchitectDB/DOUTHIT_1N-27HZ_AWB.xml

WELLPATH LOCATION

	Local coordinates		Grid coordinates		Geographic coordinates	
	North[ft]	East[ft]	Easting[US ft]	Northing[US ft]	Latitude	Longitude
Slot Location	2854.52	3398.52	3150297.61	1316247.70	40°12'00.882"N	104°57'42.962"W
Facility Reference Pt			3146916.23	1313373.21	40°11'32.676"N	104°58'26.760"W
Field Reference Pt			3197771.84	1268891.29	40°04'09.600"N	104°47'36.000"W

WELLPATH DATUM

Calculation method	Minimum curvature	XTREME 8 (17'KB) (RKB) to Facility Vertical Datum	4959.00ft
Horizontal Reference Pt	Slot	XTREME 8 (17'KB) (RKB) to Mean Sea Level	4959.00ft
Vertical Reference Pt	XTREME 8 (17'KB) (RKB)	XTREME 8 (17'KB) (RKB) to Mud Line at Slot (SLOT#20 DOUTHIT 1N-27HZ (1500'FNL & 369'FEL, SEC.26))	4959.00ft
MD Reference Pt	XTREME 8 (17'KB) (RKB)	Section Origin	N 0.00, E 0.00 ft
Field Vertical Reference	Mean Sea Level	Section Azimuth	269.67°

REFERENCE WELLPATH IDENTIFICATION

Operator	KERR-MCGEE OIL & GAS ONSHORE LP	Slot	SLOT#20 DOUTHIT 1N-27HZ (1500'FNL & 369'FEL, SEC.26)
Area	COLORADO	Well	DOUTHIT 1N-27HZ
Field	WELD COUNTY (KERR MCGEE)	Wellbore	DOUTHIT 1N-27HZ AWB
Facility	SEC.26-T3N-R68W		

WELLPATH DATA (145 stations) † = interpolated/extrapolated station

MD [ft]	Inclination [°]	Azimuth [°]	TVD [ft]	Vert Sect [ft]	North [ft]	East [ft]	Latitude	Longitude	DLS [°/100ft]	Comments
0.00†	0.000	252.430	0.00	0.00	0.00	0.00	40°12'00.882"N	104°57'42.962"W	0.00	
17.00	0.000	252.430	17.00	0.00	0.00	0.00	40°12'00.882"N	104°57'42.962"W	0.00	
117.00	0.270	252.430	117.00	0.23	-0.07	-0.22	40°12'00.881"N	104°57'42.965"W	0.27	BEGIN GYRO SURVEYS
217.00	0.220	251.880	217.00	0.63	-0.20	-0.63	40°12'00.880"N	104°57'42.970"W	0.05	
317.00	0.360	252.390	317.00	1.12	-0.36	-1.11	40°12'00.878"N	104°57'42.976"W	0.14	
417.00	0.250	259.980	417.00	1.63	-0.49	-1.63	40°12'00.877"N	104°57'42.983"W	0.12	
517.00	0.280	247.930	516.99	2.07	-0.62	-2.07	40°12'00.876"N	104°57'42.989"W	0.06	
617.00	0.440	238.250	616.99	2.63	-0.91	-2.62	40°12'00.873"N	104°57'42.996"W	0.17	
717.00	0.500	213.300	716.99	3.20	-1.48	-3.19	40°12'00.867"N	104°57'43.003"W	0.21	
817.00	0.370	250.350	816.99	3.74	-1.95	-3.73	40°12'00.863"N	104°57'43.010"W	0.30	
917.00	0.300	213.850	916.99	4.19	-2.28	-4.18	40°12'00.859"N	104°57'43.016"W	0.22	
1017.00	0.250	214.420	1016.98	4.47	-2.68	-4.45	40°12'00.856"N	104°57'43.019"W	0.05	
1117.00	0.440	234.090	1116.98	4.90	-3.08	-4.89	40°12'00.852"N	104°57'43.025"W	0.22	
1161.00	0.120	244.710	1160.98	5.08	-3.20	-5.06	40°12'00.850"N	104°57'43.027"W	0.73	TIE-INTO GYRO SURVEYS
1315.00	0.450	289.490	1314.98	5.80	-3.07	-5.78	40°12'00.852"N	104°57'43.036"W	0.24	BEGIN BHI MWD+IFR SURVEYS
1399.00	2.100	271.260	1398.96	7.65	-2.92	-7.63	40°12'00.853"N	104°57'43.060"W	2.00	
1491.00	3.740	264.640	1490.83	12.32	-3.17	-12.30	40°12'00.851"N	104°57'43.121"W	1.82	
1583.00	1.140	285.300	1582.74	16.19	-3.21	-16.17	40°12'00.850"N	104°57'43.170"W	2.94	
1674.00	2.270	18.300	1673.71	16.49	-1.26	-16.48	40°12'00.870"N	104°57'43.174"W	2.85	
1783.00	4.690	35.680	1782.51	13.18	4.41	-13.20	40°12'00.926"N	104°57'43.132"W	2.40	
1875.00	6.810	46.560	1874.04	6.98	11.22	-7.05	40°12'00.993"N	104°57'43.053"W	2.58	
1967.00	9.410	57.340	1965.12	-3.36	19.03	3.25	40°12'01.070"N	104°57'42.920"W	3.26	
2058.00	11.700	61.400	2054.58	-17.77	27.46	17.61	40°12'01.153"N	104°57'42.735"W	2.64	
2150.00	13.600	60.700	2144.34	-35.45	37.22	35.24	40°12'01.250"N	104°57'42.508"W	2.07	
2242.00	15.390	54.440	2233.41	-54.89	49.62	54.60	40°12'01.372"N	104°57'42.258"W	2.58	
2334.00	16.790	56.830	2321.81	-76.02	63.99	75.66	40°12'01.514"N	104°57'41.987"W	1.68	
2426.00	18.800	58.840	2409.40	-99.92	78.93	99.47	40°12'01.662"N	104°57'41.680"W	2.28	
2517.00	18.710	57.100	2495.57	-124.81	94.45	124.27	40°12'01.815"N	104°57'41.360"W	0.62	
2609.00	18.110	55.920	2582.86	-149.13	110.47	148.50	40°12'01.974"N	104°57'41.048"W	0.77	
2700.00	17.400	54.020	2669.53	-171.95	126.39	171.23	40°12'02.131"N	104°57'40.755"W	1.01	
2792.00	16.350	52.130	2757.57	-193.40	142.43	192.58	40°12'02.289"N	104°57'40.480"W	1.29	
2884.00	17.400	51.100	2845.60	-214.42	159.01	213.51	40°12'02.453"N	104°57'40.210"W	1.19	
2976.00	18.420	50.560	2933.14	-236.45	176.89	235.44	40°12'02.630"N	104°57'39.928"W	1.12	
3068.00	17.100	47.850	3020.76	-257.81	195.20	256.70	40°12'02.811"N	104°57'39.654"W	1.69	
3159.00	17.380	50.510	3107.67	-278.32	212.82	277.11	40°12'02.985"N	104°57'39.391"W	0.92	
3250.00	16.020	48.020	3194.83	-298.24	229.86	296.93	40°12'03.153"N	104°57'39.135"W	1.69	
3342.00	17.020	51.230	3283.04	-318.27	246.79	316.87	40°12'03.321"N	104°57'38.878"W	1.47	
3427.00	16.860	53.250	3364.35	-337.94	261.95	336.44	40°12'03.471"N	104°57'38.626"W	0.72	
3512.00	17.690	52.820	3445.51	-358.19	277.13	356.61	40°12'03.621"N	104°57'38.366"W	0.99	
3598.00	17.540	53.330	3527.48	-379.08	292.77	377.41	40°12'03.775"N	104°57'38.098"W	0.25	
3683.00	16.270	53.860	3608.81	-399.06	307.44	397.30	40°12'03.920"N	104°57'37.842"W	1.51	
3768.00	17.860	56.570	3690.06	-419.63	321.64	417.80	40°12'04.060"N	104°57'37.578"W	2.09	
3858.00	17.930	56.240	3775.71	-442.76	336.94	440.83	40°12'04.212"N	104°57'37.281"W	0.14	
3945.00	17.240	53.970	3858.64	-464.40	351.97	462.39	40°12'04.360"N	104°57'37.003"W	1.12	
4030.00	16.100	52.310	3940.07	-484.00	366.58	481.91	40°12'04.505"N	104°57'36.751"W	1.45	

REFERENCE WELLPATH IDENTIFICATION

Operator	KERR-MCGEE OIL & GAS ONSHORE LP	Slot	SLOT#20 DOUTHIT 1N-27HZ (1500'FNL & 369'FEL, SEC.26)
Area	COLORADO	Well	DOUTHIT 1N-27HZ
Field	WELD COUNTY (KERR MCGEE)	Wellbore	DOUTHIT 1N-27HZ AWP
Facility	SEC.26-T3N-R68W		

WELLPATH DATA (145 stations)

MD [ft]	Inclination [°]	Azimuth [°]	TVD [ft]	Vert Sect [ft]	North [ft]	East [ft]	Latitude	Longitude	DLS [°/100ft]	Comments
4115.00	15.960	51.670	4021.77	-502.57	381.04	500.40	40°12'04.647"N	104°57'36.513"W	0.27	
4201.00	16.760	45.660	4104.29	-520.81	397.04	518.55	40°12'04.805"N	104°57'36.279"W	2.18	
4288.00	15.830	44.080	4187.79	-538.14	414.33	535.77	40°12'04.976"N	104°57'36.057"W	1.18	
4374.00	17.370	46.810	4270.21	-555.76	431.54	553.29	40°12'05.146"N	104°57'35.831"W	2.01	
4459.00	16.860	46.760	4351.44	-574.08	448.67	571.52	40°12'05.316"N	104°57'35.596"W	0.60	
4546.00	15.400	45.870	4435.02	-591.66	465.36	589.01	40°12'05.481"N	104°57'35.371"W	1.70	
4631.00	15.800	48.030	4516.89	-608.46	480.96	605.71	40°12'05.635"N	104°57'35.156"W	0.83	
4716.00	16.410	48.100	4598.55	-626.09	496.71	623.25	40°12'05.790"N	104°57'34.930"W	0.72	
4801.00	17.080	49.680	4679.95	-644.63	512.81	641.71	40°12'05.949"N	104°57'34.692"W	0.95	
4886.00	16.960	49.570	4761.22	-663.68	528.93	660.66	40°12'06.109"N	104°57'34.448"W	0.15	
4971.00	14.940	50.110	4842.95	-681.61	543.99	678.51	40°12'06.258"N	104°57'34.218"W	2.38	
5056.00	12.340	51.740	4925.54	-697.22	556.65	694.05	40°12'06.383"N	104°57'34.017"W	3.09	
5142.00	10.410	50.350	5009.85	-710.48	567.30	707.25	40°12'06.488"N	104°57'33.847"W	2.27	
5229.00	9.600	54.350	5095.53	-722.48	576.54	719.20	40°12'06.579"N	104°57'33.693"W	1.23	
5314.00	8.300	53.180	5179.49	-733.20	584.35	729.87	40°12'06.656"N	104°57'33.556"W	1.54	
5399.00	6.560	57.110	5263.77	-742.22	590.66	738.86	40°12'06.719"N	104°57'33.440"W	2.13	
5484.00	4.270	56.910	5348.39	-748.98	595.03	745.58	40°12'06.762"N	104°57'33.353"W	2.69	
5572.00	2.030	52.600	5436.25	-752.98	597.76	749.57	40°12'06.789"N	104°57'33.302"W	2.56	
5657.00	0.710	94.670	5521.22	-754.70	598.64	751.29	40°12'06.798"N	104°57'33.280"W	1.85	
5744.00	0.230	353.390	5608.22	-755.22	598.77	751.81	40°12'06.799"N	104°57'33.273"W	0.91	
5829.00	0.410	231.120	5693.22	-754.96	598.74	751.55	40°12'06.799"N	104°57'33.276"W	0.67	
6085.00	0.440	244.530	5949.21	-753.36	597.75	749.95	40°12'06.789"N	104°57'33.297"W	0.04	
6341.00	0.280	357.100	6205.21	-752.44	597.95	749.03	40°12'06.791"N	104°57'33.309"W	0.24	
6426.00	1.060	276.340	6290.21	-751.65	598.24	748.24	40°12'06.794"N	104°57'33.319"W	1.24	
6601.00	1.100	276.050	6465.18	-748.37	598.60	744.96	40°12'06.797"N	104°57'33.361"W	0.02	
6643.00	4.170	270.750	6507.13	-746.45	598.66	743.03	40°12'06.798"N	104°57'33.386"W	7.32	
6686.00	8.350	269.920	6549.86	-741.76	598.68	738.34	40°12'06.798"N	104°57'33.446"W	9.72	
6729.00	12.910	269.320	6592.11	-733.83	598.62	730.41	40°12'06.797"N	104°57'33.549"W	10.61	
6771.00	17.360	267.690	6632.64	-722.87	598.31	719.46	40°12'06.794"N	104°57'33.690"W	10.64	
6814.00	21.580	266.280	6673.18	-708.56	597.53	705.15	40°12'06.787"N	104°57'33.874"W	9.87	
6857.00	25.790	266.350	6712.55	-691.32	596.43	687.91	40°12'06.776"N	104°57'34.096"W	9.79	
6899.00	30.070	267.080	6749.64	-671.68	595.31	668.28	40°12'06.765"N	104°57'34.349"W	10.22	
6942.00	33.790	267.150	6786.13	-648.96	594.16	645.57	40°12'06.753"N	104°57'34.642"W	8.65	
6986.00	36.780	265.410	6822.05	-623.59	592.50	620.21	40°12'06.737"N	104°57'34.969"W	7.17	
7029.00	40.040	265.960	6855.74	-596.95	590.50	593.58	40°12'06.717"N	104°57'35.312"W	7.62	
7072.00	42.300	269.440	6888.11	-568.67	589.38	565.30	40°12'06.706"N	104°57'35.677"W	7.48	
7114.00	45.750	269.730	6918.30	-539.48	589.17	536.12	40°12'06.704"N	104°57'36.053"W	8.23	
7157.00	50.130	269.790	6947.10	-507.57	589.04	504.20	40°12'06.703"N	104°57'36.464"W	10.19	
7200.00	54.740	270.290	6973.31	-473.49	589.07	470.13	40°12'06.703"N	104°57'36.903"W	10.76	
7242.00	58.360	271.360	6996.46	-438.46	589.58	435.09	40°12'06.708"N	104°57'37.355"W	8.88	
7285.00	61.630	270.730	7017.96	-401.24	590.25	397.87	40°12'06.715"N	104°57'37.834"W	7.71	
7328.00	64.840	268.880	7037.32	-362.86	590.11	359.48	40°12'06.713"N	104°57'38.329"W	8.40	
7370.00	67.460	267.360	7054.30	-324.46	588.85	321.10	40°12'06.701"N	104°57'38.824"W	7.06	
7413.00	70.130	267.380	7069.85	-284.41	587.01	281.05	40°12'06.683"N	104°57'39.340"W	6.21	
7456.00	73.850	266.680	7083.15	-243.57	584.89	240.22	40°12'06.662"N	104°57'39.866"W	8.79	

REFERENCE WELLPATH IDENTIFICATION

Operator	KERR-MCGEE OIL & GAS ONSHORE LP	Slot	SLOT#20 DOUTHIT 1N-27HZ (1500'FNL & 369'FEL, SEC.26)
Area	COLORADO	Well	DOUTHIT 1N-27HZ
Field	WELD COUNTY (KERR MCGEE)	Wellbore	DOUTHIT 1N-27HZ AWB
Facility	SEC.26-T3N-R68W		

WELLPATH DATA (145 stations) † = interpolated/extrapolated station

MD [ft]	Inclination [°]	Azimuth [°]	TVD [ft]	Vert Sect [ft]	North [ft]	East [ft]	Latitude	Longitude	DLS [°/100ft]	Comments
7498.00	77.560	266.940	7093.51	-202.92	582.62	199.59	40°12'06.639"N	104°57'40.390"W	8.85	
7559.00	83.400	266.260	7103.60	-142.88	579.05	139.57	40°12'06.604"N	104°57'41.163"W	9.64	
7613.00†	84.912	265.752	7109.10	-89.27	575.31	85.98	40°12'06.567"N	104°57'41.854"W	2.95	7" CASING POINT
7745.00	88.610	264.520	7116.55	42.08	564.14	-45.31	40°12'06.457"N	104°57'43.546"W	2.95	
7830.00	87.990	265.970	7119.08	126.79	557.10	-129.98	40°12'06.387"N	104°57'44.637"W	1.85	
7915.00	88.390	267.060	7121.76	211.61	551.93	-214.78	40°12'06.336"N	104°57'45.730"W	1.37	
8004.00	88.700	268.050	7124.02	300.52	548.14	-303.67	40°12'06.299"N	104°57'46.876"W	1.17	
8092.00	90.210	270.260	7124.86	388.51	546.84	-391.64	40°12'06.286"N	104°57'48.009"W	3.04	
8177.00	89.530	270.690	7125.05	473.50	547.54	-476.64	40°12'06.293"N	104°57'49.105"W	0.95	
8262.00	91.010	270.830	7124.65	558.48	548.67	-561.63	40°12'06.304"N	104°57'50.200"W	1.75	
8348.00	91.230	270.700	7122.97	644.45	549.82	-647.61	40°12'06.315"N	104°57'51.308"W	0.30	
8435.00	91.380	270.870	7120.99	731.41	551.01	-734.58	40°12'06.327"N	104°57'52.429"W	0.26	
8605.00	90.640	270.350	7117.99	901.36	552.82	-904.54	40°12'06.345"N	104°57'54.619"W	0.53	
8778.00	91.050	270.290	7115.44	1074.33	553.79	-1077.52	40°12'06.354"N	104°57'56.849"W	0.24	
8949.00	90.830	270.360	7112.64	1245.29	554.76	-1248.49	40°12'06.364"N	104°57'59.052"W	0.14	
9119.00	90.460	269.910	7110.72	1415.28	555.16	-1418.48	40°12'06.368"N	104°58'01.243"W	0.34	
9289.00	89.810	270.320	7110.32	1585.27	555.50	-1588.48	40°12'06.371"N	104°58'03.434"W	0.45	
9467.00	89.220	270.920	7111.83	1763.24	557.42	-1766.46	40°12'06.390"N	104°58'05.727"W	0.47	
9556.00	88.520	271.280	7113.58	1852.19	559.13	-1855.42	40°12'06.407"N	104°58'06.874"W	0.88	
9645.00	89.320	271.510	7115.26	1941.13	561.30	-1944.38	40°12'06.428"N	104°58'08.020"W	0.94	
9734.00	90.580	271.440	7115.34	2030.09	563.59	-2033.35	40°12'06.451"N	104°58'09.167"W	1.42	
9823.00	90.580	271.430	7114.44	2119.04	565.82	-2122.32	40°12'06.472"N	104°58'10.314"W	0.01	
10001.00	89.350	271.160	7114.55	2296.97	569.84	-2300.27	40°12'06.512"N	104°58'12.607"W	0.71	
10090.00	90.800	272.060	7114.43	2385.91	572.34	-2389.23	40°12'06.537"N	104°58'13.754"W	1.92	
10179.00	89.190	269.510	7114.44	2474.89	573.56	-2478.21	40°12'06.549"N	104°58'14.900"W	3.39	
10268.00	90.390	269.800	7114.76	2563.88	573.02	-2567.21	40°12'06.543"N	104°58'16.047"W	1.39	
10357.00	89.930	268.440	7114.51	2652.88	571.66	-2656.19	40°12'06.530"N	104°58'17.194"W	1.61	
10446.00	89.780	267.360	7114.74	2741.83	568.40	-2745.13	40°12'06.497"N	104°58'18.340"W	1.23	
10535.00	89.960	266.780	7114.94	2830.74	563.85	-2834.01	40°12'06.452"N	104°58'19.486"W	0.68	
10624.00	90.150	265.590	7114.86	2919.57	557.93	-2922.82	40°12'06.394"N	104°58'20.630"W	1.35	
10709.00	91.590	267.490	7113.57	3004.43	552.80	-3007.64	40°12'06.343"N	104°58'21.723"W	2.80	
10794.00	90.830	267.980	7111.77	3089.36	549.44	-3092.56	40°12'06.310"N	104°58'22.818"W	1.06	
10879.00	91.410	268.010	7110.11	3174.31	546.46	-3177.49	40°12'06.280"N	104°58'23.912"W	0.68	
10964.00	92.210	269.010	7107.42	3259.25	544.26	-3262.42	40°12'06.258"N	104°58'25.007"W	1.51	
11137.00	91.970	269.240	7101.12	3432.12	541.61	-3435.28	40°12'06.232"N	104°58'27.235"W	0.19	
11222.00	89.930	268.760	7099.71	3517.10	540.13	-3520.25	40°12'06.217"N	104°58'28.330"W	2.47	
11308.00	88.670	267.860	7100.76	3603.07	537.60	-3606.21	40°12'06.192"N	104°58'29.437"W	1.80	
11393.00	88.550	268.550	7102.82	3688.02	534.93	-3691.14	40°12'06.165"N	104°58'30.532"W	0.82	
11478.00	87.810	269.270	7105.52	3772.96	533.32	-3776.08	40°12'06.149"N	104°58'31.627"W	1.21	
11563.00	88.020	269.540	7108.61	3857.91	532.44	-3861.02	40°12'06.141"N	104°58'32.721"W	0.40	
11649.00	87.840	268.710	7111.72	3943.85	531.12	-3946.95	40°12'06.127"N	104°58'33.829"W	0.99	
11734.00	88.700	268.020	7114.28	4028.78	528.70	-4031.88	40°12'06.103"N	104°58'34.923"W	1.30	
11819.00	89.500	268.450	7115.62	4113.75	526.08	-4116.82	40°12'06.077"N	104°58'36.018"W	1.07	
11908.00	89.440	267.770	7116.44	4202.71	523.15	-4205.77	40°12'06.048"N	104°58'37.164"W	0.77	
11992.00	90.400	268.500	7116.56	4286.68	520.41	-4289.73	40°12'06.021"N	104°58'38.246"W	1.44	

REFERENCE WELLPATH IDENTIFICATION

Operator	KERR-MCGEE OIL & GAS ONSHORE LP	Slot	SLOT#20 DOUTHIT 1N-27HZ (1500'FNL & 369'FEL, SEC.26)
Area	COLORADO	Well	DOUTHIT 1N-27HZ
Field	WELD COUNTY (KERR MCGEE)	Wellbore	DOUTHIT 1N-27HZ AWB
Facility	SEC.26-T3N-R68W		

WELLPATH DATA (145 stations)

MD [ft]	Inclination [°]	Azimuth [°]	TVD [ft]	Vert Sect [ft]	North [ft]	East [ft]	Latitude	Longitude	DLS [°/100ft]	Comments
12077.00	91.010	269.170	7115.51	4371.66	518.68	-4374.70	40°12'06.004"N	104°58'39.342"W	1.07	
12163.00	89.320	268.750	7115.27	4457.65	517.12	-4460.68	40°12'05.988"N	104°58'40.450"W	2.02	
12248.00	88.580	269.260	7116.82	4542.63	515.65	-4545.66	40°12'05.973"N	104°58'41.545"W	1.06	
12335.00	89.250	270.970	7118.47	4629.61	515.82	-4632.64	40°12'05.975"N	104°58'42.666"W	2.11	
12421.00	89.260	271.990	7119.59	4715.56	518.04	-4718.60	40°12'05.997"N	104°58'43.774"W	1.19	
12506.00	89.100	271.720	7120.81	4800.49	520.79	-4803.55	40°12'06.024"N	104°58'44.868"W	0.37	
12591.00	91.200	272.920	7120.58	4885.39	524.24	-4888.47	40°12'06.058"N	104°58'45.963"W	2.85	
12762.00	90.430	272.330	7118.15	5056.14	532.07	-5059.27	40°12'06.135"N	104°58'48.164"W	0.57	
12855.00	90.950	273.380	7117.03	5148.99	536.70	-5152.15	40°12'06.180"N	104°58'49.361"W	1.26	LAST BHI MWD+IFR SURVEYS
12923.00	90.950	273.380	7115.90	5216.84	540.71	-5220.02	40°12'06.220"N	104°58'50.236"W	0.00	PROJECTION TO BIT

HOLE & CASING SECTIONS - Ref Wellbore: DOUTHIT 1N-27HZ AWB Ref Wellpath: DOUTHIT 1N-27HZ AWP

String/Diameter	Start MD [ft]	End MD [ft]	Interval [ft]	Start TVD [ft]	End TVD [ft]	Start N/S [ft]	Start E/W [ft]	End N/S [ft]	End E/W [ft]
13.5in Open Hole	17.00	1241.00	1224.00	17.00	1240.98	0.00	0.00	-3.20	-5.33
9.625in Casing Surface	17.00	1229.00	1212.00	17.00	1228.98	0.00	0.00	-3.21	-5.28
8.75in Open Hole	1239.00	7623.00	6384.00	1238.98	7109.96	-3.20	-5.32	574.57	76.04
7in Casing Intermediate	17.00	7613.00	7596.00	17.00	7109.10	0.00	0.00	575.31	85.98
6.125in Open Hole	7623.00	12923.00	5300.00	7109.96	7115.90	574.57	76.04	540.71	-5220.02

Actual Wellpath Report

DOUTHIT 1N-27HZ AWP

Page 6 of 7

REFERENCE WELLPATH IDENTIFICATION

Operator	KERR-MCGEE OIL & GAS ONSHORE LP	Slot	SLOT#20 DOUTHIT 1N-27HZ (1500'FNL & 369'FEL, SEC.26)
Area	COLORADO	Well	DOUTHIT 1N-27HZ
Field	WELD COUNTY (KERR MCGEE)	Wellbore	DOUTHIT 1N-27HZ AWB
Facility	SEC.26-T3N-R68W		

TARGETS

Name	MD [ft]	TVD [ft]	North [ft]	East [ft]	Grid East [US ft]	Grid North [US ft]	Latitude	Longitude	Shape
SEC.26-T3N-R68W HARDLINES (460' SETBACKS)		0.00	0.00	89.93	3150387.54	1316248.25	40°12'00.882"N	104°57'41.803"W	polygon
SEC.26-T3N-R68W SECTION LINES		0.00	0.00	89.93	3150387.54	1316248.25	40°12'00.882"N	104°57'41.803"W	polygon
SEC.27-T3N-R68W HARDLINES (460' SETBACKS)		0.00	0.00	89.93	3150387.54	1316248.25	40°12'00.882"N	104°57'41.803"W	polygon
SEC.27-T3N-R68W SECTION LINES		0.00	0.00	89.93	3150387.54	1316248.25	40°12'00.882"N	104°57'41.803"W	polygon
DOUTHIT 1N-27HZ BHL ON PLAT (925'FNL & 300'FEL, SEC.27) REV-1		7109.00	544.06	-5221.44	3145073.20	1316760.05	40°12'06.253"N	104°58'50.254"W	point
DOUTHIT 1N-27HZ LAND BOX		7109.00	0.00	0.00	3150297.61	1316247.70	40°12'00.882"N	104°57'42.962"W	polygon

WELLPATH COMPOSITION - Ref Wellbore: DOUTHIT 1N-27HZ AWB Ref Wellpath: DOUTHIT 1N-27HZ AWP

Start MD [ft]	End MD [ft]	Positional Uncertainty Model	Log Name/Comment	Wellbore
17.00	1161.00	Generic gyro - continuous (Standard)	MS ENERGY GYROS SURVEYS 13.5" <117-1161>	DOUTHIT 1N-27HZ AWB
1161.00	7559.00	NaviTrak (IFR)	BHI MWD+IFR SURVEYS 8.75" <1315-7559>	DOUTHIT 1N-27HZ AWB
7559.00	12855.00	NaviTrak (IFR)	BHI MWD+IFR SURVEYS 6.125" <7745-12855>	DOUTHIT 1N-27HZ AWB
12855.00	12923.00	Blind Drilling (std)	Projection to bit	DOUTHIT 1N-27HZ AWB

Actual Wellpath Report

DOUTHIT 1N-27HZ AWP

Page 7 of 7

REFERENCE WELLPATH IDENTIFICATION			
Operator	KERR-MCGEE OIL & GAS ONSHORE LP	Slot	SLOT#20 DOUTHIT 1N-27HZ (1500'FNL & 369'FEL, SEC.26)
Area	COLORADO	Well	DOUTHIT 1N-27HZ
Field	WELD COUNTY (KERR MCGEE)	Wellbore	DOUTHIT 1N-27HZ AWB
Facility	SEC.26-T3N-R68W		

WELLPATH COMMENTS				
MD [ft]	Inclination [°]	Azimuth [°]	TVD [ft]	Comment
117.00	0.270	252.430	117.00	BEGIN GYRO SURVEYS
1161.00	0.120	244.710	1160.98	TIE-INTO GYRO SURVEYS
1315.00	0.450	289.490	1314.98	BEGIN BHI MWD+IFR SURVEYS
7613.00	84.912	265.752	7109.10	7" CASING POINT
12855.00	90.950	273.380	7117.03	LAST BHI MWD+IFR SURVEYS
12923.00	90.950	273.380	7115.90	PROJECTION TO BIT