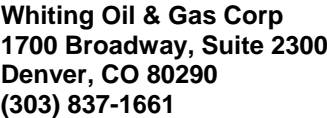




Whiting Oil & Gas Corp  
1700 Broadway, Suite 2300  
Denver, CO 80290  
(303) 837-1661

Completion Report Info -- CR  
Well Name: RAZOR FEDERAL 26J-3511A

WPC ID 1C00761027	API Number 05123383460 0	N/S Dist (ft) 2,326.0	N/S Ref FSL	E/W Dist (ft) 1,947.0	E/W Ref FEL	Lot	Quarter 1 NW	Quarter 2 SE	Quarter 3	Quarter 4	Section 26	Township 10	Twnshp... N	Range 58	Rng E/W... W		
Field Name DJ Horizontal Niobrara		County Weld		State CO		Gr Elev (ft) 4,725.60		Orig KB Elv (ft) 4,742.60		KB-Grd (ft) 17.00		Orig Spud Date 4/22/2014		Completion Date 7/29/2014		First Prod Date 8/19/2014	
Operator		Responsible Drilling			Responsible Engineer			Responsible Foreman			Responsible Geology			Well Permit Number			
Lateral/Horizontal - Original Hole, 12/9/2014 3:41:54 PM																	
MD (ftKB)		Vertical schematic (actual)															
97.1		<div><div></div><div></div><div></div><div></div><div></div><div></div><div></div><div></div><div></div><div></div><div></div><div></div><div></div><div></div><div></div><div></div><div></div><div></div><div></div><div></div><div></div><div></div><div></div><div></div><div></div><div></div><div></div><div></div><div></div><div></div><div></div><div></div><div></div><div></div><div></div><div></div><div></div><div></div><div></div><div></div><div></div><div></div><div></div><div></div><div></div><div></div><div></div><div></div><div></div><div></div><div></div><div></div><div></div><div></div><div></div><div></div><div></div><div></div><div></div><div></div><div></div><div></div><div></div><div></div><div></div><div></div><div></div><div></div><div></div><div></div><div></div><div></div><div></div><div></div><div></div><div></div><div></div><div></div><div></div><div></div><div></div><div></div><div></div><div></div><div></div><div></div><div></div><div></div><div></div><div></div><div></div><div></div><div></div><div></div><div></div><div></div><div></div><div></div><div></div><div></div><div></div><div></div><div></div><div></div><div></div><div></div><div></div><div></div><div></div><div></div><div></div><div></div><div></div><div></div><div></div><div></div><div></div><div></div><div></div><div></div><div></div><div></div><div></div><div></div><div></div><div></div><div></div><div></div><div></div><div></div><div></div><div></div><div></div><div></div><div></div><div></div><div></div><div></div><div></div><div></div><div></div><div></div><div></div><div></div><div></div><div></div><div></div><div></div><div></div><div></div><div></div><div></div><div></div><div></div><div></div><div></div><div></div><div></div><div></div><div></div><div></div><div></div><div></div><div></div><div></div><div></div><div></div><div></div><div></div><div></div><div></div><div></div><div></div><div></div><div></div><div></div><div></div><div></div><div></div><div></div><div></div><div></div><div></div><div></div><div></div><div></div><div></div><div></div><div></div><div></div><div></div><div></div><div></div><div></div><div></div><div></div><div></div><div></div><div></div><div></div><div></div><div></div><div></div><div></div><div></div><div></div><div></div><div></div><div></div><div></div><div></div><div></div><div></div><div></div><div></div><div></div><div></div><div></div><div></div><div></div><div></div><div></div><div></div><div></div><div></div><div></div><div></div><div></div><div></div><div></div><div></div><div></div><div></div><div></div><div></div><div></div><div></div><div></div><div></div><div></div><div></div><div></div><div></div><div></div><div></div><div></div><div></div><div></div><div></div><div></div><div></div><div></div><div></div><div></div><div></div><div></div><div></div><div></div><div></div><div></div><div></div><div></div><div></div><div></div><div></div><div></div><div></div><div></div><div></div><div></div><div></div><div></div><div></div><div></div><div></div><div></div><div></div><div></div><div></div><div></div><div></div><div></div><div></div><div></div><div></div><div></div><div></div><div></div><div></div><div></div><div></div><div></div><div></div><div></div><div></div><div></div><div></div><div></div><div></div><div></div><div></div><div></div><div></div><div></div><div></div><div></div><div></div><div></div><div></div><div></div><div></div><div></div><div></div><div></div><div></div><div></div><div></div><div></div><div></div><div></div><div></div><div></div><div></div><div></div><div></div><div></div><div></div><div></div><div></div><div></div><div></div><div></div><div></div><div></div><div></div><div></div><div></div><div></div><div></div><div></div><div></div><div></div><div></div><div></div><div></div><div></div><div></div><div></div><div></div><div></div><div></div><div></div><div></div><div></div><div></div><div></div><div></div><div></div><div></div><div></div><div></div><div></div><div></div><div></div><div></div><div></div><div></div><div></div><div></div><div></div><div></div><div></div><div></div><div></div><div></div><div></div><div></div><div></div><div></div><div></div><div></div><div></div><div></div><div></div><div></div><div></div><div></div><div></div><div></div><div></div><div></div><div></div><div></div><div></div><div></div><div></div><div></div><div></div><div></div><div></div><div></div><div></div><div></div><div></div><div></div><div></div><div></div><div></div><div></div><div></div><div></div><div></div><div></div><div></div><div></div><div></div><div></div><div></div><div></div><div></div><div></div><div></div><div></div><div></div><div></div><div></div><div></div><div></div><div></div><div></div><div></div><div></div><div></div><div></div><div></div><div></div><div></div><div></div><div></div><div></div><div></div><div></div><div></div><div></div><div></div><div></div><div></div><div></div><div></div><div></div><div></div><div></div><div></div><div></div><div></div><div></div><div></div><div></div><div></div><div></div><div></div><div></div><div></div><div></div><div></div><div></div><div></div><div></div><div></div><div></div><div></div><div></div><div></div><div></div><div></div><div></div><div></div><div></div><div></div><div></div><div></div><div></div><div></div><div></div><div></div><div></div><div></div><div></div><div></div><div></div><div></div><div></div><div></div><div></div><div></div><div></div><div></div><div></div><div></div><div></div><div></div><div></div><div></div><div></div><div></div><div></div><div></div><div></div><div></div><div></div><div></div><div></div><div></div><div></div><div></div><div></div><div></div><div></div><div></div><div></div><div></div><div></div><div></div><div></div><div></div><div></div><div></div><div></div><div></div><div></div><div></div><div></div><div></div><div></div><div></div><div></div><div></div><div></div><div></div><div></div><div></div><div></div><div></div><div></div><div></div><div></div><div></div><div></div><div></div><div></div><div></div><div></div><div></div><div></div><div></div><div></div><div></div><div></div><div></div><div></div><div></div><div></div><div></div><div></div><div></div><div></div><div></div><div></div><div></div><div></div><div></div><div></div><div></div><div></div><div></div><div></div><div></div><div></div><div></div><div></div><div></div><div></div><div></div><div></div><div></div><div></div><div></div><div></div><div></div><div></div><div></div><div></div><div></div><div></div><div></div><div></div><div></div><div></div><div></div><div></div><div></div><div></div><div></div><div></div><div></div><div></div><div></div><div></div><div></div><div></div><div></div><div></div><div></div><div></div><div></div><div></div><div></div><div></div><div></div><div></div><div></div><div></div><div></div><div></div><div></div><div></div><div></div><div></div><div></div><div></div><div></div><div></div><div></div><div></div><div></div><div></div><div></div><div></div><div></div><div></div><div></div><div></div><div></div><div></div><div></div><div></div><div></div><div></div><div></div><div></div><div></div><div></div><div></div><div></div><div></div><div></div><div></div><div></div><div></div><div></div><div></div><div></div><div></div><div></div><div></div><div></div><div></div><div></div><div></div><div></div><div></div><div></div><div></div><div></div><div></div><div></div><div></div><div></div><div></div><div></div><div></div><div></div><div></div><div></div><div></div><div></div><div></div><div></div><div></div><div></div><div></div><div></div><div></div><div></div><div></div><div></div><div></div><div></div><div></div><div></div><div></div><div></div><div></div><div></div><div></div><div></div><div></div><div></div><div></div><div></div><div></div><div></div><div></div><div></div><div></div><div></div><div></div><div></div><div></div><div></div><div></div><div></div><div></div><div></div><div></div><div></div><div></div><div></div><div></div><div></div><div></div><div></div><div></div><div></div><div></div><div></div><div></div><div></div><div></div><div></div><div></div><div></div><div></div><div></div><div></div><div></div><div></div><div></div><div></div><div></div><div></div><div></div><div></div><div></div><div></div><div></div><div></div><div></div><div></div><div></div><div></div><div></div><div></div><div></div><div></div><div></div><div></div><div></div><div></div><div></div><div></div><div></div><div></div><div></div><div></div><div></div><div></div><div></div><div></div><div></div><div></div><div></div><div></div><div></div><div></div><div></div><div></div><div></div><div></div><div></div><div></div><div></div><div></div><div></div><div></div><div></div><div></div><div></div><div></div><div></div><div></div><div></div><div></div><div></div><div></div><div></div><div></div><div></div><div></div><div></div><div></div><div></div><div></div><div></div><div></div><div></div><div></div><div></div><div></div><div></div><div></div><div></div><div></div><div></div><div></div><div></div><div></div><div></div><div></div><div></div><div></div><div></div><div></div><div></div><div></div><div></div><div></div><div></div><div></div><div></div><div></div><div></div><div></div><div></div><div></div><div></div><div></div><div></div><div></div><div></div><div></div><div></div><div></div><div></div><div></div><div></div><div></div><div></div><div></div><div></div><div></div><div></div><div></div><div></div><div></div><div></div><div></div><div></div><div></div><div></div><div></div><div></div><div></div><div></div><div></div><div></div><div></div><div></div><div></div><div></div><div></div><div></div><div></div><div></div><div></div><div></div><div></div><div></div><div></div><div></div><div></div><div></div><div></div><div></div><div></div><div></div><div></div><div></div><div></div><div></div><div></div><div></div><div></div><div></div><div></div><div></div><div></div><div></div><div></div><div></div><div></div><div></div><div></div><div></div><div></div><div></div><div></div><div></div><div></div><div></div><div></div><div></div><div></div><div></div><div></div><div></div><div></div><div></div><div></div><div></div><div></div><div></div><div></div><div></div><div></div><div></div><div></div><div></div><div></div><div></div><div></div><div></div><div></div><div></div><div></div><div></div><div></div><div></div><div></div><div></div><div></div><div></div><div></div><div></div><div></div><div></div><div></div><div></div><div></div><div></div><div></div><div></div><div></div><div></div><div></div><div></div><div></div><div></div><div></div><div></div><div></div><div></div><div></div><div></div><div></div><div></div><div></div><div></div><div></div><div></div><div></div><div></div><div></div><div></div><div></div><div></div><div></div><div></div><div></div><div></div><div></div><div></div><div></div><div></div><div></div><div></div><div></div><div></div><div></div><div></div><div></div><div></div><div></div><div></div><div></div><div></div><div></div><div></div><div></div><div></div><div></div><div></div><div></div><div></div><div></div><div></div><div></div><div></div><div></div></div>															



**Well Name: RAZOR FEDERAL 26J-3511A**

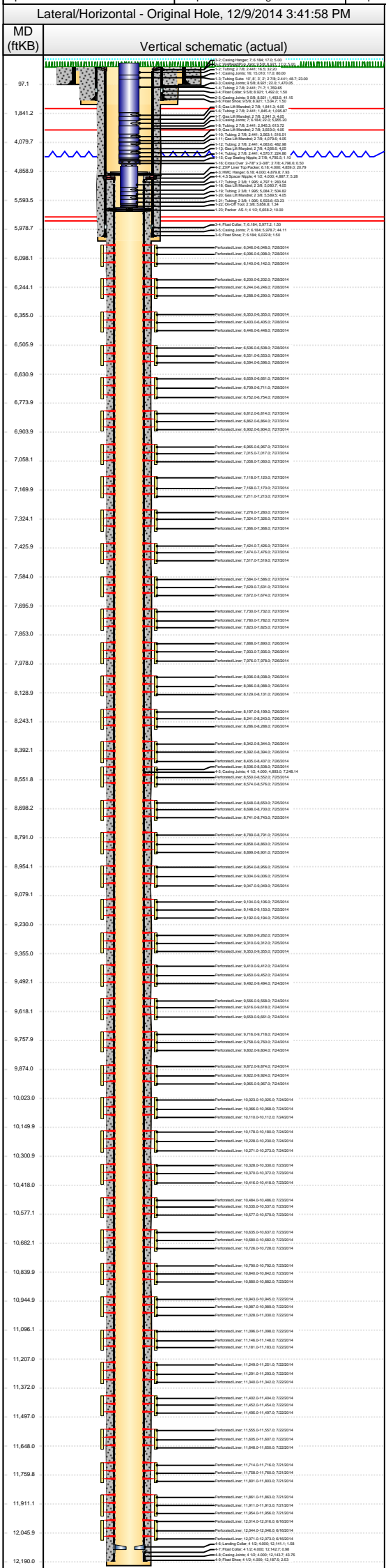
WPC ID 1CO0761027		API Number 051233834600		N/S Dist (ft) 2,326.0		N/S Ref FSL		E/W Dist (ft) 1,947.0		E/W Ref FEL		Lot		Quarter 1 NW		Quarter 2 SE		Quarter 3		Quarter 4		Section 26		Township 10 N		Twnshp...Range 58 W		Rng EW...																	
Field Name DJ Horizontal Niobrara				County Weld				State CO				Gr Elev (ft) 4,725.60				Orig KB Elev (ft) 4,742.60				KB-Grd (ft) 17.00				Orig Spud Date 4/22/2014				Completion Date 7/29/2014				First Prod Date 8/19/2014													
Operator				Responsible Drilling				Responsible Engineer				Responsible Foreman				Responsible Geology				Well Permit Number																									
Lateral/Horizontal - Original Hole, 12/9/2014 3:41:56 PM																														Shot Dens (shots/ft )		Calcula ted Shot Total													
MD (ftKB)		Vertical schematic (actual)																																											
																												Type of Hole		Date		Top (ftKB)		Btm (ftKB)		Zone									
99.1		<div>1-2-2 Casing String: 7.614-17.3-5.0</div> <div>1-3-2 Casing String: 7.614-17.3-5.0</div> <div>1-4-2 Casing String: 7.614-17.3-5.0</div> <div>1-5-2 Casing String: 7.614-17.3-5.0</div> <div>1-6-2 Casing String: 7.614-17.3-5.0</div> <div>1-7-2 Casing String: 7.614-17.3-5.0</div> <div>1-8-2 Casing String: 7.614-17.3-5.0</div> <div>1-9-2 Casing String: 7.614-17.3-5.0</div> <div>1-10-2 Casing String: 7.614-17.3-5.0</div> <div>1-11-2 Casing String: 7.614-17.3-5.0</div> <div>1-12-2 Casing String: 7.614-17.3-5.0</div> <div>1-13-2 Casing String: 7.614-17.3-5.0</div> <div>1-14-2 Casing String: 7.614-17.3-5.0</div> <div>1-15-2 Casing String: 7.614-17.3-5.0</div> <div>1-16-2 Casing String: 7.614-17.3-5.0</div> <div>1-17-2 Casing String: 7.614-17.3-5.0</div> <div>1-18-2 Casing String: 7.614-17.3-5.0</div> <div>1-19-2 Casing String: 7.614-17.3-5.0</div> <div>1-20-2 Casing String: 7.614-17.3-5.0</div> <div>1-21-2 Casing String: 7.614-17.3-5.0</div> <div>1-22-2 Casing String: 7.614-17.3-5.0</div> <div>1-23-2 Casing String: 7.614-17.3-5.0</div> <div>1-24-2 Casing String: 7.614-17.3-5.0</div> <div>1-25-2 Casing String: 7.614-17.3-5.0</div> <div>1-26-2 Casing String: 7.614-17.3-5.0</div> <div>1-27-2 Casing String: 7.614-17.3-5.0</div> <div>1-28-2 Casing String: 7.614-17.3-5.0</div> <div>1-29-2 Casing String: 7.614-17.3-5.0</div> <div>1-30-2 Casing String: 7.614-17.3-5.0</div> <div>1-31-2 Casing String: 7.614-17.3-5.0</div> <div>1-32-2 Casing String: 7.614-17.3-5.0</div> <div>1-33-2 Casing String: 7.614-17.3-5.0</div> <div>1-34-2 Casing String: 7.614-17.3-5.0</div> <div>1-35-2 Casing String: 7.614-17.3-5.0</div> <div>1-36-2 Casing String: 7.614-17.3-5.0</div> <div>1-37-2 Casing String: 7.614-17.3-5.0</div> <div>1-38-2 Casing String: 7.614-17.3-5.0</div> <div>1-39-2 Casing String: 7.614-17.3-5.0</div> <div>1-40-2 Casing String: 7.614-17.3-5.0</div> <div>1-41-2 Casing String: 7.614-17.3-5.0</div> <div>1-42-2 Casing String: 7.614-17.3-5.0</div> <div>1-43-2 Casing String: 7.614-17.3-5.0</div> <div>1-44-2 Casing String: 7.614-17.3-5.0</div> <div>1-45-2 Casing String: 7.614-17.3-5.0</div> <div>1-46-2 Casing String: 7.614-17.3-5.0</div> <div>1-47-2 Casing String: 7.614-17.3-5.0</div> <div>1-48-2 Casing String: 7.614-17.3-5.0</div> <div>1-49-2 Casing String: 7.614-17.3-5.0</div> <div>1-50-2 Casing String: 7.614-17.3-5.0</div> <div>1-51-2 Casing String: 7.614-17.3-5.0</div> <div>1-52-2 Casing String: 7.614-17.3-5.0</div> <div>1-53-2 Casing String: 7.614-17.3-5.0</div> <div>1-54-2 Casing String: 7.614-17.3-5.0</div> <div>1-55-2 Casing String: 7.614-17.3-5.0</div> <div>1-56-2 Casing String: 7.614-17.3-5.0</div> <div>1-57-2 Casing String: 7.614-17.3-5.0</div> <div>1-58-2 Casing String: 7.614-17.3-5.0</div> <div>1-59-2 Casing String: 7.614-17.3-5.0</div> <div>1-60-2 Casing String: 7.614-17.3-5.0</div> <div>1-61-2 Casing String: 7.614-17.3-5.0</div> <div>1-62-2 Casing String: 7.614-17.3-5.0</div> <div>1-63-2 Casing String: 7.614-17.3-5.0</div> <div>1-64-2 Casing String: 7.614-17.3-5.0</div> <div>1-65-2 Casing String: 7.614-17.3-5.0</div> <div>1-66-2 Casing String: 7.614-17.3-5.0</div> <div>1-67-2 Casing String: 7.614-17.3-5.0</div> <div>1-68-2 Casing String: 7.614-17.3-5.0</div> <div>1-69-2 Casing String: 7.614-17.3-5.0</div> <div>1-70-2 Casing String: 7.614-17.3-5.0</div> <div>1-71-2 Casing String: 7.614-17.3-5.0</div> <div>1-72-2 Casing String: 7.614-17.3-5.0</div> <div>1-73-2 Casing String: 7.614-17.3-5.0</div> <div>1-74-2 Casing String: 7.614-17.3-5.0</div> <div>1-75-2 Casing String: 7.614-17.3-5.0</div> <div>1-76-2 Casing String: 7.614-17.3-5.0</div> <div>1-77-2 Casing String: 7.614-17.3-5.0</div> <div>1-78-2 Casing String: 7.614-17.3-5.0</div> <div>1-79-2 Casing String: 7.614-17.3-5.0</div> <div>1-80-2 Casing String: 7.614-17.3-5.0</div> <div>1-81-2 Casing String: 7.614-17.3-5.0</div> <div>1-82-2 Casing String: 7.614-17.3-5.0</div> <div>1-83-2 Casing String: 7.614-17.3-5.0</div> <div>1-84-2 Casing String: 7.614-17.3-5.0</div> <div>1-85-2 Casing String: 7.614-17.3-5.0</div> <div>1-86-2 Casing String: 7.614-17.3-5.0</div> <div>1-87-2 Casing String: 7.614-17.3-5.0</div> <div>1-88-2 Casing String: 7.614-17.3-5.0</div> <div>1-89-2 Casing String: 7.614-17.3-5.0</div> <div>1-90-2 Casing String: 7.614-17.3-5.0</div> <div>1-91-2 Casing String: 7.614-17.3-5.0</div> <div>1-92-2 Casing String: 7.614-17.3-5.0</div> <div>1-93-2 Casing String: 7.614-17.3-5.0</div> <div>1-94-2 Casing String: 7.614-17.3-5.0</div> <div>1-95-2 Casing String: 7.614-17.3-5.0</div> <div>1-96-2 Casing String: 7.614-17.3-5.0</div> <div>1-97-2 Casing String: 7.614-17.3-5.0</div> <div>1-98-2 Casing String: 7.614-17.3-5.0</div> <div>1-99-2 Casing String: 7.614-17.3-5.0</div> <div>1-100-2 Casing String: 7.614-17.3-5.0</div> <div>1-101-2 Casing String: 7.614-17.3-5.0</div> <div>1-102-2 Casing String: 7.614-17.3-5.0</div> <div>1-103-2 Casing String: 7.614-17.3-5.0</div> <div>1-104-2 Casing String: 7.614-17.3-5.0</div> <div>1-105-2 Casing String: 7.614-17.3-5.0</div> <div>1-106-2 Casing String: 7.614-17.3-5.0</div> <div>1-107-2 Casing String: 7.614-17.3-5.0</div> <div>1-108-2 Casing String: 7.614-17.3-5.0</div> <div>1-109-2 Casing String: 7.614-17.3-5.0</div> <div>1-110-2 Casing String: 7.614-17.3-5.0</div> <div>1-111-2 Casing String: 7.614-17.3-5.0</div> <div>1-112-2 Casing String: 7.614-17.3-5.0</div> <div>1-113-2 Casing String: 7.614-17.3-5.0</div> <div>1-114-2 Casing String: 7.614-17.3-5.0</div> <div>1-115-2 Casing String: 7.614-17.3-5.0</div> <div>1-116-2 Casing String: 7.614-17.3-5.0</div> <div>1-117-2 Casing String: 7.614-17.3-5.0</div> <div>1-118-2 Casing String: 7.614-17.3-5.0</div> <div>1-119-2 Casing String: 7.614-17.3-5.0</div> <div>1-120-2 Casing String: 7.614-17.3-5.0</div> <div>1-121-2 Casing String: 7.614-17.3-5.0</div> <div>1-122-2 Casing String: 7.614-17.3-5.0</div> <div>1-123-2 Casing String: 7.614-17.3-5.0</div> <div>1-124-2 Casing String: 7.614-17.3-5.0</div> <div>1-125-2 Casing String: 7.614-17.3-5.0</div> <div>1-126-2 Casing String: 7.614-17.3-5.0</div> <div>1-127-2 Casing String: 7.614-17.3-5.0</div> <div>1-128-2 Casing String: 7.614-17.3-5.0</div> <div>1-129-2 Casing String: 7.614-17.3-5.0</div> <div>1-130-2 Casing String: 7.614-17.3-5.0</div> <div>1-131-2 Casing String: 7.614-17.3-5.0</div> <div>1-132-2 Casing String: 7.614-17.3-5.0</div> <div>1-133-2 Casing String: 7.614-17.3-5.0</div> <div>1-134-2 Casing String: 7.614-17.3-5.0</div> <div>1-135-2 Casing String: 7.614-17.3-5.0</div> <div>1-136-2 Casing String: 7.614-17.3-5.0</div> <div>1-137-2 Casing String: 7.614-17.3-5.0</div> <div>1-138-2 Casing String: 7.614-17.3-5.0</div> <div>1-139-2 Casing String: 7.614-17.3-5.0</div> <div>1-140-2 Casing String: 7.614-17.3-5.0</div> <div>1-141-2 Casing String: 7.614-17.3-5.0</div> <div>1-142-2 Casing String: 7.614-17.3-5.0</div> <div>1-143-2 Casing String: 7.614-17.3-5.0</div> <div>1-144-2 Casing String: 7.614-17.3-5.0</div> <div>1-145-2 Casing String: 7.614-17.3-5.0</div> <div>1-146-2 Casing String: 7.614-17.3-5.0</div> <div>1-147-2 Casing String: 7.614-17.3-5.0</div> <div>1-148-2 Casing String: 7.614-17.3-5.0</div> <div>1-149-2 Casing String: 7.614-17.3-5.0</div> <div>1-150-2 Casing String: 7.614-17.3-5.0</div> <div>1-151-2 Casing String: 7.614-17.3-5.0</div> <div>1-152-2 Casing String: 7.614-17.3-5.0</div> <div>1-153-2 Casing String: 7.614-17.3-5.0</div> <div>1-154-2 Casing String: 7.614-17.3-5.0</div> <div>1-155-2 Casing String: 7.614-17.3-5.0</div> <div>1-156-2 Casing String: 7.614-17.3-5.0</div> <div>1-157-2 Casing String: 7.614-17.3-5.0</div> <div>1-158-2 Casing String: 7.614-17.3-5.0</div> <div>1-159-2 Casing String: 7.614-17.3-5.0</div> <div>1-160-2 Casing String: 7.614-17.3-5.0</div> <div>1-161-2 Casing String: 7.614-17.3-5.0</div> <div>1-162-2 Casing String: 7.614-17.3-5.0</div> <div>1-163-2 Casing String: 7.614-17.3-5.0</div> <div>1-164-2 Casing String: 7.614-17.3-5.0</div> <div>1-165-2 Casing String: 7.614-17.3-5.0</div> <div>1-166-2 Casing String: 7.614-17.3-5.0</div> <div>1-167-2 Casing String: 7.614-17.3-5.0</div> <div>1-168-2 Casing String: 7.614-17.3-5.0</div> <div>1-169-2 Casing String: 7.614-17.3-5.0</div> <div>1-170-2 Casing String: 7.614-17.3-5.0</div> <div>1-171-2 Casing String: 7.614-17.3-5.0</div> <div>1-172-2 Casing String: 7.614-17.3-5.0</div> <div>1-173-2 Casing String: 7.614-17.3-5.0</div> <div>1-174-2 Casing String: 7.614-17.3-5.0</div> <div>1-175-2 Casing String: 7.614-17.3-5.0</div> <div>1-176-2 Casing String: 7.614-17.3-5.0</div> <div>1-177-2 Casing String: 7.614-17.3-5.0</div> <div>1-178-2 Casing String: 7.614-17.3-5.0</div> <div>1-179-2 Casing String: 7.614-17.3-5.0</div> <div>1-180-2 Casing String: 7.614-17.3-5.0</div> <div>1-181-2 Casing String: 7.614-17.3-5.0</div> <div>1-182-2 Casing String: 7.614-17.3-5.0</div> <div>1-183-2 Casing String: 7.614-17.3-5.0</div> <div>1-184-2 Casing String: 7.614-17.3-5.0</div> <div>1-185-2 Casing String: 7.614-17.3-5.0</div> <div>1-186-2 Casing String: 7.614-17.3-5.0</div> <div>1-187-2 Casing String: 7.614-17.3-5.0</div> <div>1-188-2 Casing String: 7.614-17.3-5.0</div> <div>1-189-2 Casing String: 7.614-17.3-5.0</div> <div>1-190-2 Casing String: 7.614-17.3-5.0</div> <div>1-191-2 Casing String: 7.614-17.3-5.0</div> <div>1-192-2 Casing String: 7.614-17.3-5.0</div> <div>1-193-2 Casing String: 7.614-17.3-5.0</div> <div>1-194-2 Casing String: 7.614-17.3-5.0</div> <div>1-195-2 Casing String: 7.614-17.3-5.0</div> <div>1-196-2 Casing String: 7.614-17.3-5.0</div> <div>1-197-2 Casing String: 7.614-17.3-5.0</div> <div>1-198-2 Casing String: 7.614-17.3-5.0</div> <div>1-199-2 Casing String: 7.614-17.3-5.0</div> <div>1-200-2 Casing String: 7.614-17.3-5.0</div> <div>1-201-2 Casing String: 7.614-17.3-5.0</div> <div>1-202-2 Casing String: 7.614-17.3-5.0</div> <div>1-203-2 Casing String: 7.614-17.3-5.0</div> <div>1-204-2 Casing String: 7.614-17.3-5.0</div> <div>1-205-2 Casing String: 7.614-17.3-5.0</div> <div>1-206-2 Casing String: 7.614-17.3-5.0</div> <div>1-207-2 Casing String: 7.614-17.3-5.0</div> <div>1-208-2 Casing String: 7.614-17.3-5.0</div> <div>1-209-2 Casing String: 7.614-17.3-5.0</div> <div>1-210-2 Casing String: 7.614-17.3-5.0</div> <div>1-211-2 Casing String: 7.614-17.3-5.0</div> <div>1-212-2 Casing String: 7.614-17.3-5.0</div> <div>1-213-2 Casing String: 7.614-17.3-5.0</div> <div>1-214-2 Casing String: 7.614-17.3-5.0</div> <div>1-215-2 Casing String: 7.614-17.3-5.0</div> <div>1-216-2 Casing String: 7.614-17.3-5.0</div> <div>1-217-2 Casing String: 7.614-17.3-5.0</div> <div>1-218-2 Casing String: 7.614-17.3-5.0</div> <div>1-219-2 Casing String: 7.614-17.3-5.0</div> <div>1-220-2 Casing String: 7.614-17.3-5.0</div> <div>1-221-2 Casing String: 7.614-17.3-5.0</div> <div>1-222-2 Casing String: 7.614-17.3-5.0</div> <div>1-223-2 Casing String: 7.614-17.3-5.0</div> <div>1-224-2 Casing String: 7.614-17.3-5.0</div> <div>1-225-2 Casing String: 7.614-17.3-5.0</div> <div>1-226-2 Casing String: 7.614-17.3-5.0</div> <div>1-227-2 Casing String: 7.614-17.3-5.0</div> <div>1-228-2 Casing String: 7.614-17.3-5.0</div> <div>1-229-2 Casing String: 7.614-17.3-5.0</div> <div>1-230-2 Casing String: 7.614-17.3-5.0</div> <div>1-231-2 Casing String: 7.614-17.3-5.0</div> <div>1-232-2 Casing String: 7.614-17.3-5.0</div> <div>1-233-2 Casing String: 7.614-17.3-5.0</div> <div>1-234-2 Casing String: 7.614-17.3-5.0</div> <div>1-235-2 Casing String: 7.614-17.3-5.0</div> <div>1-236-2 Casing String: 7.614-17.3-5.0</div> <div>1-237-2 Casing String: 7.614-17.3-5.0</div> <div>1-238-2 Casing String: 7.614-17.3-5.0</div> <div>1-239-2 Casing String: 7.614-17.3-5.0</div> <div>1-240-2 Casing String: 7.614-17.3-5.0</div> <div>1-241-2 Casing String: 7.614-17.3-5.0</div> <div>1-242-2 Casing String: 7.614-17.3-5.0</div> <div>1-243-2 Casing String: 7.614-17.3-5.0</div> <div>1-244-2 Casing String: 7.614-17.3-5.0</div> <div>1-245-2 Casing String: 7.614-17.3-5.0</div> <div>1-246-2 Casing String: 7.614-17.3-5.0</div> <div>1-247-2 Casing String: 7.614-17.3-5.0</div> <div>1-248-2 Casing String: 7.614-17.3-5.0</div> <div>1-249-2 Casing String: 7.614-17.3-5.0</div> <div>1-250-2 Casing String: 7.614-17.3-5.0</div> <div>1-251-2 Casing String: 7.614-17.3-5.0</div> <div>1-252-2 Casing String: 7.614-17.3-5.0</div> <div>1-253-2 Casing String: 7.614-17.3-5.0</div> <div>1-254-2 Casing String: 7.614-17.3-5.0</div> <div>1-255-2 Casing String: 7.614-17.3-5.0</div> <div>1-256-2 Casing String: 7.614-17.3-5.0</div> <div>1-257-2 Casing String: 7.614-17.3-5.0</div> <div>1-258-2 Casing String: 7.614-17.3-5.0</div> <div>1-259-2 Casing String: 7.614-17.3-5.0</div> <div>1-260-2 Casing String: 7.614-17.3-5.0</div> <div>1-261-2 Casing String: 7.614-17.3-5.0</div> <div>1-262-2 Casing String: 7.614-17.3-5.0</div> <div>1-263-2 Casing String: 7.614-17.3-5.0</div> <div>1-264-2 Casing String: 7.614-17.3-5.0</div> <div>1-265-2 Casing String: 7.614-17.3-5.0</div> <div>1-266-2 Casing String: 7.614-17.3-5.0</div> <div>1-267-2 Casing String: 7.614-17.3-5.0</div> <div>1-268-2 Casing String: 7.614-17.3-5.0</div> <div>1-269-2 Casing String: 7.614-17.3-5.0</div> <div>1-270-2 Casing String: 7.614-17.3-5.0</div> <div>1-271-2 Casing String: 7.614-17.3-5.0</div> <div>1-272-2 Casing String: 7.614-17.3-5.0</div> <div>1-273-2 Casing String: 7.614-17.3-5.0</div> <div>1-274-2 Casing String: 7.614-17.3-5.0</div> <div>1-275-2 Casing String: 7.614-17.3-5.0</div> <div>1-276-2 Casing String: 7.614-17.3-5.0</div> <div>1-277-2 Casing String: 7.614-17.3-5.0</div> <div>1-278-2 Casing String: 7.614-17.3-5.0</div> <div>1-279-2 Casing String: 7.614-17.3-5.0</div> <div>1-280-2 Casing String: 7.614-17.3-5.0</div> <div>1-281-2 Casing String: 7.614-17.3-5.0</div> <div>1-282-2 Casing String: 7.614-17.3-5.0</div> <div>1-283-2 Casing String: 7.614-17.3-5.0</div> <div>1-284-2 Casing String: 7.614-17.3-5.0</div> <div>1-285-2 Casing String: 7.614-17.3-5.0</div> <div>1-286-2 Casing String: 7.614-17.3-5.0</div> <div>1-287-2 Casing String: 7.614-17.3-5.0</div> <div>1-288-2 Casing String: 7.614-17.3-5.0</div> <div>1-289-2 Casing String: 7.614-17.3-5.0</div> <div>1-290-2 Casing String: 7.614-17.3-5.0</div> <div>1-291-2 Casing String: 7.614-17.3-5.0</div> <div>1-292-2 Casing String: 7.614-17.3-5.0</div> <div>1-293-2 Casing String: 7.614-17.3-5.0</div> <div>1-294-2 Casing String: 7.614-17.3-5.0</div> <div>1-295-2 Casing String: 7.614-17.3-5.0</div> <div>1-296-2 Casing String: 7.614-17.3-5.0</div> <div>1-297-2 Casing String: 7.614-17.3-5.0</div> <div>1-298-2 Casing String: 7.614-17.3-5.0</div> <div>1-299-2 Casing String: 7.614-17.3-5.0</div> <div>1-300-2 Casing String: 7.614-17.3-5.0</div> <div>1-301-2 Casing String: 7.614-17.3-5.0</div> <div>1-302-2 Casing String: 7.614-17.3-5.0</div> <div>1-303-2 Casing String: 7.614-17.3-5.0</div> <div>1-304-2 Casing String: 7.614-17.3-5.0</div> <div>1-305-2 Casing String: 7.614-17.3-5.0</div> <div>1-306-2 Casing String: 7.614-17.3-5.0</div> <div>1-307-2 Casing String: 7.614-17.3-5.0</div> <div>1-308-2 Casing String: 7.614-17.3-5.0</div> <div>1-309-2 Casing String: 7.614-17.3-5.0</div> <div>1-310-2 Casing String: 7.614-17.3-5.0</div> <div>1-311-2 Casing String: 7.614-17.3-5.0</div> <div>1-312-2 Casing String: 7.614-17.3-5.0</div> <div>1-313-2 Casing String: 7.614-17.3-5.0</div> <div>1-314-2 Casing String: 7.614-17.3-5.0</div> <div>1-315-2 Casing String: 7.614-17.3-5.0</div> <div>1-316-2 Casing String: 7.614-17.3-5.0</div> <div>1-317-2 Casing String: 7.614-17.3-5.0</div> <div>1-318-2 Casing String: 7.614-17.3-5.0</div> <div>1-319-2 Casing String: 7.614-17.3-5.0</div> <div>1-320-2 Casing String: 7.614-17.3-5.0</div> <div>1-321-2 Casing String: 7.614-17.3-5.0</div> <div>1-322-2 Casing String: 7.614-17.3-5.0</div> <div>1-323-2 Casing String: 7.614-17.3-5.0</div> <div>1-324-2 Casing String: 7.614-17.3-5.0</div> <div>1-325-2 Casing String: 7.614-17.3-5.0</div> <div>1-326-2 Casing String: 7.614-17.3-5.0</div> <div>1-327-2 Casing String: 7.614-17.3-5.0</div> <div>1-328-2 Casing String: 7.614-17.3-5.0</div> <div>1-329-2 Casing String: 7.614-17.3-5.0</div> <div>1-330-2 Casing String: 7.614-17.3-5.0</div> <div>1-331-2 Casing String: 7.614-17.3-5.0</div> <div>1-332-2 Casing String: 7.614-17.3-5.0</div> <div>1-333-2 Casing String: 7.614-17.3-5.0</div> <div>1-334-2 Casing String: 7.614-17.3-5.0</div> <div>1-335-2 Casing String: 7.614-17.3-5.0</div> <div>1-336-2 Casing String: 7.614-17.3-5.0</div> <div>1-337-2 Casing String: 7.614-17.3-5.0</div> <div>1-338-2 Casing String: 7.614-17.3-5.0</div> <div>1-339-2 Casing String: 7.614-17.3-5.0</div> <div>1-340-2 Casing String: 7.614-17.3-5.0</div> <div>1-341-2 Casing String: 7.614-17.3-5.0</div> <div>1-342-2 Casing String: 7.614-17.3-5.0</div> <div>1-343-2 Casing String: 7.614-17.3-5.0</div> <div>1-344-2 Casing String: 7.614-17.3-5.0</div> <div>1-345-2 Casing String: 7.614-17.3-5.0</div> <div>1-346-2 Casing String: 7.614-17.3-5.0</div> <div>1-347-2 Casing String: 7.614-17.3-5.0</div> <div>1-348-2 Casing String: 7.614-17.3-5.0</div> <div>1-349-2 Casing String: 7.614-17.3-5.0</div> <div>1-350-2 Casing String: 7.614-17.3-5.0</div> <div>1-351-2 Casing String: 7.614-17.3-5.0</div> <div>1-352-2 Casing String: 7.614-17.3-5.0</div> <div>1-353-2 Casing String: 7.614-17.3-5.0</div> <div>1-354-2 Casing String: 7.614-17.3-5.0</div> <div>1-355-2 Casing String: 7.614-17.3-5.0</div> <div>1-356-2 Casing String: 7.614-17.3-5.0</div> <div>1-357-2 Casing String: 7.614-17.3-5.0</div> <div>1-358-2 Casing String: 7.614-17.3-5.0</div> <div>1-359-2 Casing String: 7.614-17.3-5.0</div> <div>1-360-2 Casing String: 7.614-17.3-5.0</div> <div>1-361-2 Casing String: 7.614-17.3-5.0</div> <div>1-362-2 Casing String: 7.614-17.3-5.0</div> <div>1-363-2 Casing String: 7.614-17.3-5.0</div> <div>1-364-2 Casing String: 7.614-17.3-5.0</div> <div>1-365-2 Casing String: 7.614-17.3-5.0</div> <div>1-366-2 Casing String: 7.614-17.3-5.0</div> <div>1-367-2 Casing String: 7.614-17.3-5.0</div> <div>1-368-2 Casing String: 7.614-17.3-5.0</div> <div>1-369-2 Casing String: 7.614-17.3-5.0</div> <div>1-370-2 Casing String: 7.614-17.3-5.0</div> <div>1-371-2 Casing String: 7.614-17.3-5.0</div> <div>1-372-2 Casing String: 7.614-17.3-5.0</div> <div>1-373-2 Casing String: 7.614-17.3-5.0</div> <div>1-374-2 Casing String: 7.614-17.3-5.0</div> <div>1-375-2 Casing String: 7.614-17.3-5.0</div> <div>1-376-2 Casing String: 7.614-17.3-5.0</div> <div>1-377-2 Casing String: 7.614-17.3-5.0</div> <div>1-378-2 Casing String: 7.614-17.3-5.0</div> <div>1-379-2 Casing String: 7.</div>																																											



Whiting Oil & Gas Corp  
1700 Broadway, Suite 2300  
Denver, CO 80290  
(303) 837-1661

Completion Report Info -- CR  
Well Name: RAZOR FEDERAL 26J-3511A

WPC ID 1CO0761027	API Number 05123383460 0	N/S Dist (ft) 2,326.0	N/S Ref FSL	E/W Dist (ft) 1,947.0	E/W Ref FEL	Lot	Quarter 1 NW	Quarter 2 SE	Quarter 3	Quarter 4	Section 26	Township 10	Twnshp... N	Range 58	Rng E/W... W
Field Name DJ Horizontal Niobrara	County Weld	State CO	Gr Elev (ft) 4,725.60	Orig KB Elv (ft) 4,742.60	KB-Grd (ft) 17.00	Orig Spud Date 4/22/2014	Completion Date 7/29/2014	First Prod Date 8/19/2014							
Operator		Responsible Drilling		Responsible Engineer		Responsible Foreman		Responsible Geology		Well Permit Number					



Type of Hole	Date	Top (ftKB)	Btm (ftKB)	Zone	Shot Dens (shots/ft )	Calculated Shot Total
Perforated Liner	7/26/2014	7,976.0	7,978.0	Niobrara, Original Hole	6.0	13
Perforated Liner	7/26/2014	8,036.0	8,038.0	Niobrara, Original Hole	6.0	13
Perforated Liner	7/26/2014	8,086.0	8,088.0	Niobrara, Original Hole	6.0	13
Perforated Liner	7/26/2014	8,129.0	8,131.0	Niobrara, Original Hole	6.0	13
Perforated Liner	7/26/2014	8,197.0	8,199.0	Niobrara, Original Hole	6.0	13
Perforated Liner	7/26/2014	8,241.0	8,243.0	Niobrara, Original Hole	6.0	13
Perforated Liner	7/26/2014	8,286.0	8,288.0	Niobrara, Original Hole	6.0	13
Perforated Liner	7/26/2014	8,342.0	8,344.0	Niobrara, Original Hole	6.0	13
Perforated Liner	7/26/2014	8,392.0	8,394.0	Niobrara, Original Hole	6.0	13
Perforated Liner	7/26/2014	8,435.0	8,437.0	Niobrara, Original Hole	6.0	13
Perforated Liner	7/25/2014	8,506.0	8,508.0	Niobrara, Original Hole	6.0	13
Perforated Liner	7/25/2014	8,550.0	8,552.0	Niobrara, Original Hole	6.0	13
Perforated Liner	7/25/2014	8,574.0	8,576.0	Niobrara, Original Hole	6.0	13
Perforated Liner	7/25/2014	8,648.0	8,650.0	Niobrara, Original Hole	6.0	13
Perforated Liner	7/25/2014	8,698.0	8,700.0	Niobrara, Original Hole	6.0	13
Perforated Liner	7/25/2014	8,741.0	8,743.0	Niobrara, Original Hole	6.0	13
Perforated Liner	7/25/2014	8,789.0	8,791.0	Niobrara, Original Hole	6.0	13
Perforated Liner	7/25/2014	8,858.0	8,860.0	Niobrara, Original Hole	6.0	13
Perforated Liner	7/25/2014	8,899.0	8,901.0	Niobrara, Original Hole	6.0	13
Perforated Liner	7/25/2014	8,954.0	8,956.0	Niobrara, Original Hole	6.0	13
Perforated Liner	7/25/2014	9,004.0	9,006.0	Niobrara, Original Hole	6.0	13
Perforated Liner	7/25/2014	9,047.0	9,049.0	Niobrara, Original Hole	6.0	13
Perforated Liner	7/25/2014	9,104.0	9,106.0	Niobrara, Original Hole	6.0	13
Perforated Liner	7/25/2014	9,148.0	9,150.0	Niobrara, Original Hole	6.0	13
Perforated Liner	7/25/2014	9,192.0	9,194.0	Niobrara, Original Hole	6.0	13
Perforated Liner	7/25/2014	9,260.0	9,262.0	Niobrara, Original Hole	6.0	13
Perforated Liner	7/25/2014	9,310.0	9,312.0	Niobrara, Original Hole	6.0	13
Perforated Liner	7/25/2014	9,353.0	9,355.0	Niobrara, Original Hole	6.0	13
Perforated Liner	7/24/2014	9,410.0	9,412.0	Niobrara, Original Hole	6.0	13
Perforated Liner	7/24/2014	9,450.0	9,452.0	Niobrara, Original Hole	6.0	13
Perforated Liner	7/24/2014	9,492.0	9,494.0	Niobrara, Original Hole	6.0	13
Perforated Liner	7/24/2014	9,566.0	9,568.0	Niobrara, Original Hole	6.0	13
Perforated Liner	7/24/2014	9,616.0	9,618.0	Niobrara, Original Hole	6.0	13
Perforated Liner	7/24/2014	9,659.0	9,661.0	Niobrara, Original Hole	6.0	13
Perforated Liner	7/24/2014	9,716.0	9,718.0	Niobrara, Original Hole	6.0	13
Perforated Liner	7/24/2014	9,758.0	9,760.0	Niobrara, Original Hole	6.0	13
Perforated Liner	7/24/2014	9,802.0	9,804.0	Niobrara, Original Hole	6.0	13
Perforated Liner	7/24/2014	9,872.0	9,874.0	Niobrara, Original Hole	6.0	13

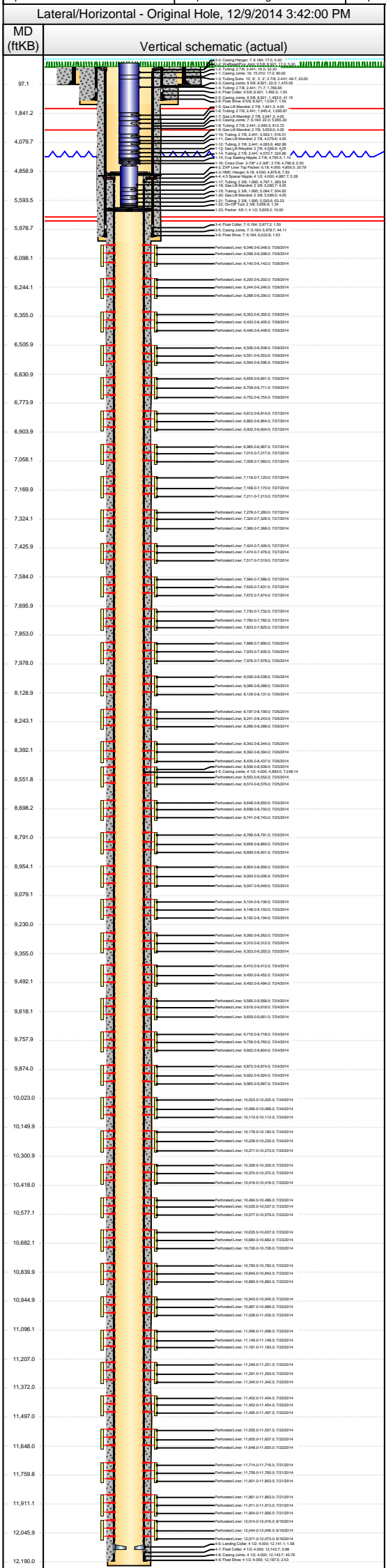




Whiting Oil & Gas Corp  
1700 Broadway, Suite 2300  
Denver, CO 80290  
(303) 837-1661

Completion Report Info -- CR  
Well Name: RAZOR FEDERAL 26J-3511A

WPC ID	API Number	N/S Dist (ft)	N/S Ref	E/W Dist (ft)	E/W Ref	Lot	Quarter 1	Quarter 2	Quarter 3	Quarter 4	Section	Township	Twnshp...	Range	Rng E/W...
1CO0761027	051233834600	2,326.0	FSL	1,947.0	FEL		NW	SE			26	10	N	58	W
Field Name		County	State			Gr Elev (ft)	Orig KB Elv (ft)	KB-Grd (ft)	Orig Spud Date	Completion Date	First Prod Date				
DJ Horizontal Niobrara		Weld	CO			4,725.60	4,742.60	17.00	4/22/2014	7/29/2014	8/19/2014				



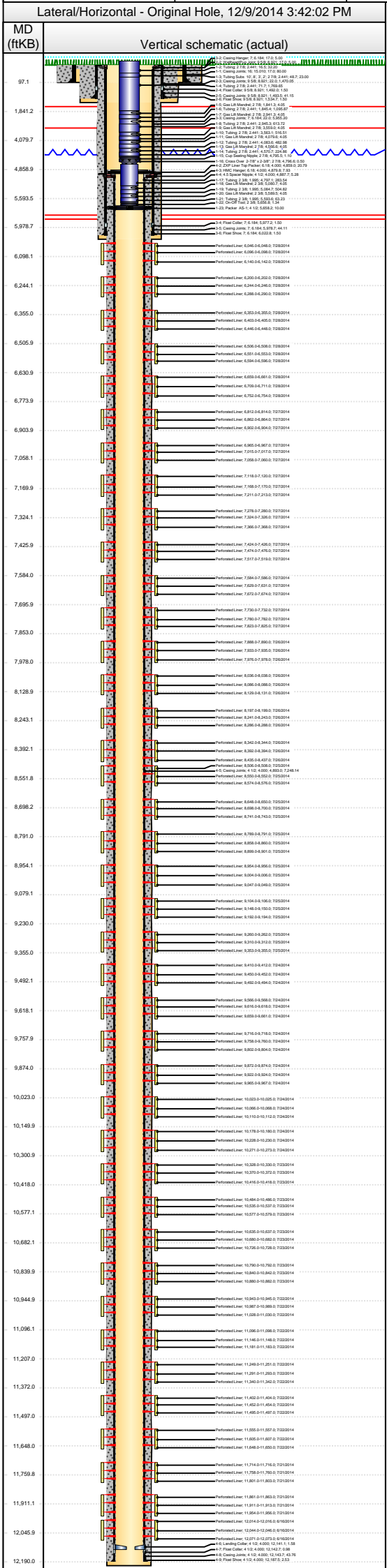
Type of Hole	Date	Top (ftKB)	Btm (ftKB)	Zone	Shot Dens (shots/ft)	Calculated Shot Total
Perforated Liner	7/24/2014	9,922.0	9,924.0	Niobrara, Original Hole	6.0	13
Perforated Liner	7/24/2014	9,965.0	9,967.0	Niobrara, Original Hole	6.0	13
Perforated Liner	7/24/2014	10,023.0	10,025.0	Niobrara, Original Hole	6.0	13
Perforated Liner	7/24/2014	10,066.0	10,068.0	Niobrara, Original Hole	6.0	13
Perforated Liner	7/24/2014	10,110.0	10,112.0	Niobrara, Original Hole	6.0	13
Perforated Liner	7/24/2014	10,178.0	10,180.0	Niobrara, Original Hole	6.0	13
Perforated Liner	7/24/2014	10,228.0	10,230.0	Niobrara, Original Hole	6.0	13
Perforated Liner	7/24/2014	10,271.0	10,273.0	Niobrara, Original Hole	6.0	13
Perforated Liner	7/23/2014	10,328.0	10,330.0	Niobrara, Original Hole	6.0	13
Perforated Liner	7/23/2014	10,370.0	10,372.0	Niobrara, Original Hole	6.0	13
Perforated Liner	7/23/2014	10,416.0	10,418.0	Niobrara, Original Hole	6.0	13
Perforated Liner	7/23/2014	10,484.0	10,486.0	Niobrara, Original Hole	6.0	13
Perforated Liner	7/23/2014	10,535.0	10,537.0	Niobrara, Original Hole	6.0	13
Perforated Liner	7/23/2014	10,577.0	10,579.0	Niobrara, Original Hole	6.0	13
Perforated Liner	7/23/2014	10,635.0	10,637.0	Niobrara, Original Hole	6.0	13
Perforated Liner	7/23/2014	10,680.0	10,682.0	Niobrara, Original Hole	6.0	13
Perforated Liner	7/23/2014	10,726.0	10,728.0	Niobrara, Original Hole	6.0	13
Perforated Liner	7/23/2014	10,790.0	10,792.0	Niobrara, Original Hole	6.0	13
Perforated Liner	7/23/2014	10,840.0	10,842.0	Niobrara, Original Hole	6.0	13
Perforated Liner	7/23/2014	10,880.0	10,882.0	Niobrara, Original Hole	6.0	13
Perforated Liner	7/22/2014	10,943.0	10,945.0	Niobrara, Original Hole	6.0	13
Perforated Liner	7/22/2014	10,987.0	10,989.0	Niobrara, Original Hole	6.0	13
Perforated Liner	7/22/2014	11,028.0	11,030.0	Niobrara, Original Hole	6.0	13
Perforated Liner	7/22/2014	11,096.0	11,098.0	Niobrara, Original Hole	6.0	13
Perforated Liner	7/22/2014	11,146.0	11,148.0	Niobrara, Original Hole	6.0	13
Perforated Liner	7/22/2014	11,181.0	11,183.0	Niobrara, Original Hole	6.0	13
Perforated Liner	7/22/2014	11,249.0	11,251.0	Niobrara, Original Hole	6.0	13
Perforated Liner	7/22/2014	11,291.0	11,293.0	Niobrara, Original Hole	6.0	13
Perforated Liner	7/22/2014	11,340.0	11,342.0	Niobrara, Original Hole	6.0	13
Perforated Liner	7/22/2014	11,402.0	11,404.0	Niobrara, Original Hole	6.0	13
Perforated Liner	7/22/2014	11,452.0	11,454.0	Niobrara, Original Hole	6.0	13
Perforated Liner	7/22/2014	11,495.0	11,497.0	Niobrara, Original Hole	6.0	13
Perforated Liner	7/22/2014	11,555.0	11,557.0	Niobrara, Original Hole	6.0	13
Perforated Liner	7/22/2014	11,605.0	11,607.0	Niobrara, Original Hole	6.0	13
Perforated Liner	7/22/2014	11,648.0	11,650.0	Niobrara, Original Hole	6.0	13
Perforated Liner	7/21/2014	11,714.0	11,716.0	Niobrara, Original Hole	6.0	13
Perforated Liner	7/21/2014	11,758.0	11,760.0	Niobrara, Original Hole	6.0	13
Perforated Liner	7/21/2014	11,801.0	11,803.0	Niobrara, Original Hole	6.0	13



Whiting Oil & Gas Corp  
1700 Broadway, Suite 2300  
Denver, CO 80290  
(303) 837-1661

Completion Report Info -- CR  
Well Name: RAZOR FEDERAL 26J-3511A

WPC ID 1C00761027	API Number 05123383460 0	N/S Dist (ft) 2,326.0	N/S Ref FSL	E/W Dist (ft) 1,947.0	E/W Ref FEL	Lot	Quarter 1 NW	Quarter 2 SE	Quarter 3	Quarter 4	Section 26	Township 10	Twnshp... N	Range 58	Rng E/W... W
Field Name DJ Horizontal Niobrara	County Weld	State CO	Gr Elev (ft) 4,725.60	Orig KB Elv (ft) 4,742.60	KB-Grd (ft) 17.00	Orig Spud Date 4/22/2014	Completion Date 7/29/2014	First Prod Date 8/19/2014							
Operator		Responsible Drilling		Responsible Engineer		Responsible Foreman		Responsible Geology		Well Permit Number					



MD (ftKB)	Type of Hole	Date	Top (ftKB)	Btm (ftKB)	Zone	Shot Dens (shots/ft)	Calculated Shot Total
97.1	Perforated Liner	7/21/2014	11,861.0	11,863.0	Niobrara, Original Hole	6.0	13
1,841.2	Perforated Liner	7/21/2014	11,911.0	11,913.0	Niobrara, Original Hole	6.0	13
4,079.7	Perforated Liner	7/21/2014	11,954.0	11,956.0	Niobrara, Original Hole	6.0	13
4,858.9	Perforated Liner	6/16/2014	12,014.0	12,016.0	Niobrara, Original Hole	6.0	13
5,593.5	Perforated Liner	6/16/2014	12,044.0	12,046.0	Niobrara, Original Hole	6.0	13
5,978.7	Perforated Liner	6/16/2014	12,071.0	12,073.0	Niobrara, Original Hole	6.0	13
6,098.1	Perforated Liner	6/16/2014	12,071.0	12,073.0	Niobrara, Original Hole	6.0	13
6,244.1	Perforated Liner	6/16/2014	12,071.0	12,073.0	Niobrara, Original Hole	6.0	13
6,355.0	Perforated Liner	6/16/2014	12,071.0	12,073.0	Niobrara, Original Hole	6.0	13
6,505.9	Perforated Liner	6/16/2014	12,071.0	12,073.0	Niobrara, Original Hole	6.0	13
6,630.9	Perforated Liner	6/16/2014	12,071.0	12,073.0	Niobrara, Original Hole	6.0	13
6,773.9	Perforated Liner	6/16/2014	12,071.0	12,073.0	Niobrara, Original Hole	6.0	13
6,903.9	Perforated Liner	6/16/2014	12,071.0	12,073.0	Niobrara, Original Hole	6.0	13
7,058.1	Perforated Liner	6/16/2014	12,071.0	12,073.0	Niobrara, Original Hole	6.0	13
7,169.9	Perforated Liner	6/16/2014	12,071.0	12,073.0	Niobrara, Original Hole	6.0	13
7,324.1	Perforated Liner	6/16/2014	12,071.0	12,073.0	Niobrara, Original Hole	6.0	13
7,425.9	Perforated Liner	6/16/2014	12,071.0	12,073.0	Niobrara, Original Hole	6.0	13
7,584.0	Perforated Liner	6/16/2014	12,071.0	12,073.0	Niobrara, Original Hole	6.0	13
7,695.9	Perforated Liner	6/16/2014	12,071.0	12,073.0	Niobrara, Original Hole	6.0	13
7,853.0	Perforated Liner	6/16/2014	12,071.0	12,073.0	Niobrara, Original Hole	6.0	13
7,978.0	Perforated Liner	6/16/2014	12,071.0	12,073.0	Niobrara, Original Hole	6.0	13
8,128.9	Perforated Liner	6/16/2014	12,071.0	12,073.0	Niobrara, Original Hole	6.0	13
8,243.1	Perforated Liner	6/16/2014	12,071.0	12,073.0	Niobrara, Original Hole	6.0	13
8,392.1	Perforated Liner	6/16/2014	12,071.0	12,073.0	Niobrara, Original Hole	6.0	13
8,551.8	Perforated Liner	6/16/2014	12,071.0	12,073.0	Niobrara, Original Hole	6.0	13
8,698.2	Perforated Liner	6/16/2014	12,071.0	12,073.0	Niobrara, Original Hole	6.0	13
8,791.0	Perforated Liner	6/16/2014	12,071.0	12,073.0	Niobrara, Original Hole	6.0	13
8,954.1	Perforated Liner	6/16/2014	12,071.0	12,073.0	Niobrara, Original Hole	6.0	13
9,079.1	Perforated Liner	6/16/2014	12,071.0	12,073.0	Niobrara, Original Hole	6.0	13
9,230.0	Perforated Liner	6/16/2014	12,071.0	12,073.0	Niobrara, Original Hole	6.0	13
9,355.0	Perforated Liner	6/16/2014	12,071.0	12,073.0	Niobrara, Original Hole	6.0	13
9,492.1	Perforated Liner	6/16/2014	12,071.0	12,073.0	Niobrara, Original Hole	6.0	13
9,618.1	Perforated Liner	6/16/2014	12,071.0	12,073.0	Niobrara, Original Hole	6.0	13
9,757.9	Perforated Liner	6/16/2014	12,071.0	12,073.0	Niobrara, Original Hole	6.0	13
9,874.0	Perforated Liner	6/16/2014	12,071.0	12,073.0	Niobrara, Original Hole	6.0	13
10,023.0	Perforated Liner	6/16/2014	12,071.0	12,073.0	Niobrara, Original Hole	6.0	13
10,149.9	Perforated Liner	6/16/2014	12,071.0	12,073.0	Niobrara, Original Hole	6.0	13
10,300.9	Perforated Liner	6/16/2014	12,071.0	12,073.0	Niobrara, Original Hole	6.0	13
10,418.0	Perforated Liner	6/16/2014	12,071.0	12,073.0	Niobrara, Original Hole	6.0	13
10,577.1	Perforated Liner	6/16/2014	12,071.0	12,073.0	Niobrara, Original Hole	6.0	13
10,682.1	Perforated Liner	6/16/2014	12,071.0	12,073.0	Niobrara, Original Hole	6.0	13
10,839.9	Perforated Liner	6/16/2014	12,071.0	12,073.0	Niobrara, Original Hole	6.0	13
10,944.9	Perforated Liner	6/16/2014	12,071.0	12,073.0	Niobrara, Original Hole	6.0	13
11,096.1	Perforated Liner	6/16/2014	12,071.0	12,073.0	Niobrara, Original Hole	6.0	13
11,207.0	Perforated Liner	6/16/2014	12,071.0	12,073.0	Niobrara, Original Hole	6.0	13
11,372.0	Perforated Liner	6/16/2014	12,071.0	12,073.0	Niobrara, Original Hole	6.0	13
11,497.0	Perforated Liner	6/16/2014	12,071.0	12,073.0	Niobrara, Original Hole	6.0	13
11,648.0	Perforated Liner	6/16/2014	12,071.0	12,073.0	Niobrara, Original Hole	6.0	13
11,759.8	Perforated Liner	6/16/2014	12,071.0	12,073.0	Niobrara, Original Hole	6.0	13
11,911.1	Perforated Liner	6/16/2014	12,071.0	12,073.0	Niobrara, Original Hole	6.0	13
12,045.9	Perforated Liner	6/16/2014	12,071.0	12,073.0	Niobrara, Original Hole	6.0	13
12,190.0	Perforated Liner	6/16/2014	12,071.0	12,073.0	Niobrara, Original Hole	6.0	13

Stimulations & Treatments					
Stg #	Stage Type	Start Date	Top (ftKB)	Btm (ftKB)	Stim/Treat Fluid
40	Interval	7/28/2014	6,046.0	6,142.0	Clearstar 30 XL Gel; 30# Linear Gel; 15% HCl, <fluidtyp>
39	Interval	7/28/2014	6,200.0	6,290.0	Clearstar 30 XL Gel; 30# Linear Gel; 15% HCl, <fluidtyp>
38	Interval	7/28/2014	6,353.0	6,448.0	Clearstar 30 XL Gel; 30# Linear Gel; 15% HCl, <fluidtyp>
37	Interval	7/28/2014	6,506.0	6,596.0	Clearstar 30 XL Gel; 30# Linear Gel; 15% HCl, <fluidtyp>
36	Interval	7/27/2014	6,659.0	6,754.0	Clearstar 30 XL Gel; 30# Linear Gel; 15% HCl, <fluidtyp>
35	Interval	7/27/2014	6,812.0	6,904.0	Clearstar 30 XL Gel; 30# Linear Gel; 15% HCl, <fluidtyp>
34	Interval	7/27/2014	6,965.0	7,060.0	Clearstar 30 XL Gel; 30# Linear Gel; 15% HCl, <fluidtyp>
33	Interval	7/27/2014	7,118.0	7,213.0	Clearstar 30 XL Gel; 30# Linear Gel; 15% HCl, <fluidtyp>
32	Interval	7/27/2014	7,278.0	7,368.0	Clearstar 30 XL Gel; 30# Linear Gel; 15% HCl, <fluidtyp>
31	Interval	7/27/2014	7,424.0	7,519.0	Clearstar 30 XL Gel; 30# Linear Gel; 15% HCl, <fluidtyp>
30	Interval	7/27/2014	7,584.0	7,674.0	Clearstar 30 XL Gel; 30# Linear Gel; 15% HCl, <fluidtyp>
29	Interval	7/26/2014	7,730.0	7,825.0	Clearstar 30 XL Gel; 30# Linear Gel; 15% HCl, <fluidtyp>
28	Interval	7/26/2014	7,888.0	7,978.0	Clearstar 30 XL Gel; 30# Linear Gel; 15% HCl, <fluidtyp>
27	Interval	7/26/2014	8,036.0	8,131.0	Clearstar 30 XL Gel; 30# Linear Gel; 15% HCl, <fluidtyp>
26	Interval	7/26/2014	8,197.0	8,288.0	Clearstar 30 XL Gel; 30# Linear Gel; 15% HCl, <fluidtyp>
25	Interval	7/26/2014	8,342.0	8,437.0	Clearstar 30 XL Gel; 30# Linear Gel; 15% HCl, <fluidtyp>
24	Interval	7/26/2014	8,506.0	8,576.0	Clearstar 30 XL Gel; 30# Linear Gel; 15% HCl, <fluidtyp>
23	Interval	7/25/2014	8,648.0	8,743.0	Clearstar 30 XL Gel; 30# Linear Gel; 15% HCl, <fluidtyp>
22	Interval	7/25/2014	8,789.0	8,901.0	Clearstar 30 XL Gel; 30# Linear Gel; 15% HCl, <fluidtyp>
21	Interval	7/25/2014	8,954.0	9,049.0	Clearstar 30 XL Gel; 30# Linear Gel; 15% HCl, <fluidtyp>
20	Interval	7/25/2014	9,104.0	9,194.0	Clearstar 30 XL Gel; 30# Linear Gel; 15% HCl, <fluidtyp>
19	Interval	7/24/2014	9,260.0	9,355.0	Clearstar 30 XL Gel; 30# Linear Gel; 15% HCl, <fluidtyp>
18	Interval	7/24/2014	9,410.0	9,494.0	Clearstar 30 XL Gel; 30# Linear Gel; 15% HCl, <fluidtyp>
17	Interval	7/24/2014	9,566.0	9,661.0	Clearstar 30 XL Gel; 30# Linear Gel; 15% HCl, <fluidtyp>
16	Interval	7/24/2014	9,716.0	9,804.0	Clearstar 30 XL Gel; 30# Linear Gel; 15% HCl, <fluidtyp>



**Well Name: RAZOR FEDERAL 26J-3511A**

WPC ID 1C00761027	API Number 051233834600	N/S Dist (ft) 2,326.0	N/S Ref FSL	E/W Dist (ft) 1,947.0	E/W Ref FEL	Lot	Quarter 1 NW	Quarter 2 SE	Quarter 3	Quarter 4	Section 26	Township 10	Twnshp... N	Range 58	Rng E/W... W			
Field Name DJ Horizontal Niobrara		County Weld		State CO			Gr Elev (ft) 4,725.60		Orig KB Elev (ft) 4,742.60		KB-Grd (ft) 17.00		Orig Spud Date 4/22/2014		Completion Date 7/29/2014		First Prod Date 8/19/2014	
Operator		Responsible Drilling		Responsible Engineer			Responsible Foreman			Responsible Geology			Well Permit Number					

Lateral/Horizontal - Original Hole, 12/9/2014 3:42:03 PM

MD  
(ftKB)

Vertical schematic (actual)

97.1

1-2 Casing inner 7.8 15.0 17.0 20.0  
1-2 Casing inner 7.8 15.0 17.0 20.0  
1-2 Casing inner 7.8 15.0 17.0 20.0  
1-2 Casing inner 7.8 15.0 17.0 20.0  
1-2 Casing inner 7.8 15.0 17.0 20.0  
1-2 Casing inner 7.8 15.0 17.0 20.0  
1-2 Casing inner 7.8 15.0 17.0 20.0  
1-2 Casing inner 7.8 15.0 17.0 20.0  
1-2 Casing inner 7.8 15.0 17.0 20.0  
1-2 Casing inner 7.8 15.0 17.0 20.0  
1-2 Casing inner 7.8 15.0 17.0 20.0  
1-2 Casing inner 7.8 15.0 17.0 20.0  
1-2 Casing inner 7.8 15.0 17.0 20.0  
1-2 Casing inner 7.8 15.0 17.0 20.0  
1-2 Casing inner 7.8 15.0 17.0 20.0  
1-2 Casing inner 7.8 15.0 17.0 20.0  
1-2 Casing inner 7.8 15.0 17.0 20.0  
1-2 Casing inner 7.8 15.0 17.0 20.0  
1-2 Casing inner 7.8 15.0 17.0 20.0  
1-2 Casing inner 7.8 15.0 17.0 20.0  
1-2 Casing inner 7.8 15.0 17.0 20.0  
1-2 Casing inner 7.8 15.0 17.0 20.0  
1-2 Casing inner 7.8 15.0 17.0 20.0  
1-2 Casing inner 7.8 15.0 17.0 20.0  
1-2 Casing inner 7.8 15.0 17.0 20.0  
1-2 Casing inner 7.8 15.0 17.0 20.0  
1-2 Casing inner 7.8 15.0 17.0 20.0  
1-2 Casing inner 7.8 15.0 17.0 20.0  
1-2 Casing inner 7.8 15.0 17.0 20.0  
1-2 Casing inner 7.8 15.0 17.0 20.0  
1-2 Casing inner 7.8 15.0 17.0 20.0  
1-2 Casing inner 7.8 15.0 17.0 20.0  
1-2 Casing inner 7.8 15.0 17.0 20.0  
1-2 Casing inner 7.8 15.0 17.0 20.0  
1-2 Casing inner 7.8 15.0 17.0 20.0  
1-2 Casing inner 7.8 15.0 17.0 20.0  
1-2 Casing inner 7.8 15.0 17.0 20.0  
1-2 Casing inner 7.8 15.0 17.0 20.0  
1-2 Casing inner 7.8 15.0 17.0 20.0  
1-2 Casing inner 7.8 15.0 17.0 20.0  
1-2 Casing inner 7.8 15.0 17.0 20.0  
1-2 Casing inner 7.8 15.0 17.0 20.0  
1-2 Casing inner 7.8 15.0 17.0 20.0  
1-2 Casing inner 7.8 15.0 17.0 20.0  
1-2 Casing inner 7.8 15.0 17.0 20.0  
1-2 Casing inner 7.8 15.0 17.0 20.0  
1-2 Casing inner 7.8 15.0 17.0 20.0  
1-2 Casing inner 7.8 15.0 17.0 20.0  
1-2 Casing inner 7.8 15.0 17.0 20.0  
1-2 Casing inner 7.8 15.0 17.0 20.0  
1-2 Casing inner 7.8 15.0 17.0 20.0  
1-2 Casing inner 7.8 15.0 17.0 20.0  
1-2 Casing inner 7.8 15.0 17.0 20.0  
1-2 Casing inner 7.8 15.0 17.0 20.0  
1-2 Casing inner 7.8 15.0 17.0 20.0  
1-2 Casing inner 7.8 15.0 17.0 20.0  
1-2 Casing inner 7.8 15.0 17.0 20.0  
1-2 Casing inner 7.8 15.0 17.0 20.0  
1-2 Casing inner 7.8 15.0 17.0 20.0  
1-2 Casing inner 7.8 15.0 17.0 20.0  
1-2 Casing inner 7.8 15.0 17.0 20.0  
1-2 Casing inner 7.8 15.0 17.0 20.0  
1-2 Casing inner 7.8 15.0 17.0 20.0  
1-2 Casing inner 7.8 15.0 17.0 20.0  
1-2 Casing inner 7.8 15.0 17.0 20.0  
1-2 Casing inner 7.8 15.0 17.0 20.0  
1-2 Casing inner 7.8 15.0 17.0 20.0  
1-2 Casing inner 7.8 15.0 17.0 20.0  
1-2 Casing inner 7.8 15.0 17.0 20.0  
1-2 Casing inner 7.8 15.0 17.0 20.0  
1-2 Casing inner 7.8 15.0 17.0 20.0  
1-2 Casing inner 7.8 15.0 17.0 20.0  
1-2 Casing inner 7.8 15.0 17.0 20.0  
1-2 Casing inner 7.8 15.0 17.0 20.0  
1-2 Casing inner 7.8 15.0 17.0 20.0  
1-2 Casing inner 7.8 15.0 17.0 20.0  
1-2 Casing inner 7.8 15.0 17.0 20.0  
1-2 Casing inner 7.8 15.0 17.0 20.0  
1-2 Casing inner 7.8 15.0 17.0 20.0  
1-2 Casing inner 7.8 15.0 17.0 20.0  
1-2 Casing inner 7.8 15.0 17.0 20.0  
1-2 Casing inner 7.8 15.0 17.0 20.0  
1-2 Casing inner 7.8 15.0 17.0 20.0  
1-2 Casing inner 7.8 15.0 17.0 20.0  
1-2 Casing inner 7.8 15.0 17.0 20.0  
1-2 Casing inner 7.8 15.0 17.0 20.0  
1-2 Casing inner 7.8 15.0 17.0 20.0  
1-2 Casing inner 7.8 15.0 17.0 20.0  
1-2 Casing inner 7.8 15.0 17.0 20.0  
1-2 Casing inner 7.8 15.0 17.0 20.0  
1-2 Casing inner 7.8 15.0 17.0 20.0  
1-2 Casing inner 7.8 15.0 17.0 20.0  
1-2 Casing inner 7.8 15.0 17.0 20.0  
1-2 Casing inner 7.8 15.0 17.0 20.0  
1-2 Casing inner 7.8 15.0 17.0 20.0  
1-2 Casing inner 7.8 15.0 17.0 20.0  
1-2 Casing inner 7.8 15.0 17.0 20.0  
1-2 Casing inner 7.8 15.0 17.0 20.0  
1-2 Casing inner 7.8 15.0 17.0 20.0  
1-2 Casing inner 7.8 15.0 17.0 20.0  
1-2 Casing inner 7.8 15.0 17.0 20.0  
1-2 Casing inner 7.8 15.0 17.0 20.0  
1-2 Casing inner 7.8 15.0 17.0 20.0  
1-2 Casing inner 7.8 15.0 17.0 20.0  
1-2 Casing inner 7.8 15.0 17.0 20.0  
1-2 Casing inner 7.8 15.0 17.0 20.0  
1-2 Casing inner 7.8 15.0 17.0 20.0  
1-2 Casing inner 7.8 15.0 17.0 20.0  
1-2 Casing inner 7.8 15.0 17.0 20.0  
1-2 Casing inner 7.8 15.0 17.0 20.0  
1-2 Casing inner 7.8 15.0 17.0 20.0  
1-2 Casing inner 7.8 15.0 17.0 20.0  
1-2 Casing inner 7.8 15.0 17.0 20.0  
1-2 Casing inner 7.8 15.0 17.0 20.0  
1-2 Casing inner 7.8 15.0 17.0 20.0  
1-2 Casing inner 7.8 15.0 17.0 20.0  
1-2 Casing inner 7.8 15.0 17.0 20.0  
1-2 Casing inner 7.8 15.0 17.0 20.0  
1-2 Casing inner 7.8 15.0 17.0 20.0  
1-2 Casing inner 7.8 15.0 17.0 20.0  
1-2 Casing inner 7.8 15.0 17.0 20.0  
1-2 Casing inner 7.8 15.0 17.0 20.0  
1-2 Casing inner 7.8 15.0 17.0 20.0  
1-2 Casing inner 7.8 15.0 17.0 20.0  
1-2 Casing inner 7.8 15.0 17.0 20.0  
1-2 Casing inner 7.8 15.0 17.0 20.0  
1-2 Casing inner 7.8 15.0 17.0 20.0  
1-2 Casing inner 7.8 15.0 17.0 20.0  
1-2 Casing inner 7.8 15.0 17.0 20.0  
1-2 Casing inner 7.8 15.0 17.0 20.0  
1-2 Casing inner 7.8 15.0 17.0 20.0  
1-2 Casing inner 7.8 15.0 17.0 20.0  
1-2 Casing inner 7.8 15.0 17.0 20.0  
1-2 Casing inner 7.8 15.0 17.0 20.0  
1-2 Casing inner 7.8 15.0 17.0 20.0  
1-2 Casing inner 7.8 15.0 17.0 20.0  
1-2 Casing inner 7.8 15.0 17.0 20.0  
1-2 Casing inner 7.8 15.0 17.0 20.0  
1-2 Casing inner 7.8 15.0 17.0 20.0  
1-2 Casing inner 7.8 15.0 17.0 20.0  
1-2 Casing inner 7.8 15.0 17.0 20.0  
1-2 Casing inner 7.8 15.0 17.0 20.0  
1-2 Casing inner 7.8 15.0 17.0 20.0  
1-2 Casing inner 7.8 15.0 17.0 20.0  
1-2 Casing inner 7.8 15.0 17.0 20.0  
1-2 Casing inner 7.8 15.0 17.0 20.0  
1-2 Casing inner 7.8 15.0 17.0 20.0  
1-2 Casing inner 7.8 15.0 17.0 20.0  
1-2 Casing inner 7.8 15.0 17.0 20.0  
1-2 Casing inner 7.8 15.0 17.0 20.0  
1-2 Casing inner 7.8 15.0 17.0 20.0  
1-2 Casing inner 7.8 15.0 17.0 20.0  
1-2 Casing inner 7.8 15.0 17.0 20.0  
1-2 Casing inner 7.8 15.0 17.0 20.0  
1-2 Casing inner 7.8 15.0 17.0 20.0  
1-2 Casing inner 7.8 15.0 17.0 20.0  
1-2 Casing inner 7.8 15.0 17.0 20.0  
1-2 Casing inner 7.8 15.0 17.0 20.0  
1-2 Casing inner 7.8 15.0 17.0 20.0  
1-2 Casing inner 7.8 15.0 17.0 20.0  
1-2 Casing inner 7.8 15.0 17.0 20.0  
1-2 Casing inner 7.8 15.0 17.0 20.0  
1-2 Casing inner 7.8 15.0 17.0 20.0  
1-2 Casing inner 7.8 15.0 17.0 20.0  
1-2 Casing inner 7.8 15.0 17.0 20.0  
1-2 Casing inner 7.8 15.0 17.0 20.0  
1-2 Casing inner 7.8 15.0 17.0 20.0  
1-2 Casing inner 7.8 15.0 17.0 20.0  
1-2 Casing inner 7.8 15.0 17.0 20.0  
1-2 Casing inner 7.8 15.0 17.0 20.0  
1-2 Casing inner 7.8 15.0 17.0 20.0  
1-2 Casing inner 7.8 15.0 17.0 20.0  
1-2 Casing inner 7.8 15.0 17.0 20.0  
1-2 Casing inner 7.8 15.0 17.0 20.0  
1-2 Casing inner 7.8 15.0 17.0 20.0  
1-2 Casing inner 7.8 15.0 17.0 20.0  
1-2 Casing inner 7.8 15.0 17.0 20.0  
1-2 Casing inner 7.8 15.0 17.0 20.0  
1-2 Casing inner 7.8 15.0 17.0 20.0  
1-2 Casing inner 7.8 15.0 17.0 20.0  
1-2 Casing inner 7.8 15.0 17.0 20.0  
1-2 Casing inner 7.8 15.0 17.0 20.0  
1-2 Casing inner 7.8 15.0 17.0 20.0  
1-2 Casing inner 7.8 15.0 17.0 20.0  
1-2 Casing inner 7.8 15.0 17.0 20.0  
1-2 Casing inner 7.8 15.0 17.0 20.0  
1-2 Casing inner 7.8 15.0 17.0 20.0  
1-2 Casing inner 7.8 15.0 17.0 20.0  
1-2 Casing inner 7.8 15.0 17.0 20.0  
1-2 Casing inner 7.8 15.0 17.0 20.0  
1-2 Casing inner 7.8 15.0 17.0 20.0  
1-2 Casing inner 7.8 15.0 17.0 20.0  
1-2 Casing inner 7.8 15.0 17.0 20.0  
1-2 Casing inner 7.8 15.0 17.0 20.0  
1-2 Casing inner 7.8 15.0 17.0 20.0  
1-2 Casing inner 7.8 15.0 17.0 20.0  
1-2 Casing inner 7.8 15.0 17.0 20.0  
1-2 Casing inner 7.8 15.0 17.0 20.0  
1-2 Casing inner 7.8 15.0 17.0 20.0  
1-2 Casing inner 7.8 15.0 17.0 20.0  
1-2 Casing inner 7.8 15.0 17.0 20.0  
1-2 Casing inner 7.8 15.0 17.0 20.0  
1-2 Casing inner 7.8 15.0 17.0 20.0  
1-2 Casing inner 7.8 15.0 17.0 20.0  
1-2 Casing inner 7.8 15.0 17.0 20.0  
1-2 Casing inner 7.8 15.0 17.0 20.0  
1-2 Casing inner 7.8 15.0 17.0 20.0  
1-2 Casing inner 7.8 15.0 17.0 20.0  
1-2 Casing inner 7.8 15.0 17.0 20.0  
1-2 Casing inner 7.8 15.0 17.0 20.0  
1-2 Casing inner 7.8 15.0 17.0 20.0  
1-2 Casing inner 7.8 15.0 17.0 20.0  
1-2 Casing inner 7.8 15.0 17.0 20.0  
1-2 Casing inner 7.8 15.0 17.0 20.0  
1-2 Casing inner 7.8 15.0 17.0 20.0  
1-2 Casing inner 7.8 15.0 17.0 20.0  
1-2 Casing inner 7.8 15.0 17.0 20.0  
1-2 Casing inner 7.8 15.0 17.0 20.0  
1-2 Casing inner 7.8 15.0 17.0 20.0  
1-2 Casing inner 7.8 15.0 17.0 20.0  
1-2 Casing inner 7.8 15.0 17.0 20.0  
1-2 Casing inner 7.8 15.0 17.0 20.0  
1-2 Casing inner 7.8 15.0 17.0 20.0  
1-2 Casing inner 7.8 15.0 17.0 20.0  
1-2 Casing inner 7.8 15.0 17.0 20.0  
1-2 Casing inner 7.8 15.0 17.0 20.0  
1-2 Casing inner 7.8 15.0 17.0 20.0  
1-2 Casing inner 7.8 15.0 17.0 20.0  
1-2 Casing inner 7.8 15.0 17.0 20.0  
1-2 Casing inner 7.8 15.0 17.0 20.0  
1-2 Casing inner 7.8 15.0 17.0 20.0  
1-2 Casing inner 7.8 15.0 17.0 20.0  
1-2 Casing inner 7.8 15.0 17.0 20.0  
1-2 Casing inner 7.8 15.0 17.0 20.0  
1-2 Casing inner 7.8 15.0 17.0 20.0  
1-2 Casing inner 7.8 15.0 17.0 20.0  
1-2 Casing inner 7.8 15.0 17.0 20.0  
1-2 Casing inner 7.8 15.0 17.0 20.0  
1-2 Casing inner 7.8 15.0 17.0 20.0  
1-2 Casing inner 7.8 15.0 17.0 20.0  
1-2 Casing inner 7.8 15.0 17.0 20.0  
1-2 Casing inner 7.8 15.0 17.0 20.0  
1-2 Casing inner 7.8 15.0 17.0 20.0  
1-2 Casing inner 7.8 15.0 17.0 20.0  
1-2 Casing inner 7.8 15.0 17.0 20.0  
1-2 Casing inner 7.8 15.0 17.0 20.0  
1-2 Casing inner 7.8 15.0 17.0 20.0  
1-2 Casing inner 7.8 15.0 17.0 20.0  
1-2 Casing inner 7.8 15.0 17.0 20.0  
1-2 Casing inner 7.8 15.0 17.0 20.0  
1-2 Casing inner 7.8 15.0 17.0 20.0  
1-2 Casing inner 7.8 15.0 17.0 20.0  
1-2 Casing inner 7.8 15.0 17.0 20.0  
1-2 Casing inner 7.8 15.0 17.0 20.0  
1-2 Casing inner 7.8 15.0 17.0 20.0  
1-2 Casing inner 7.8 15.0 17.0 20.0  
1-2 Casing inner 7.8 15.0 17.0 20.0  
1-2 Casing inner 7.8 15.0 17.0 20.0  
1-2 Casing inner 7.8 15.0 17.0 20.0  
1-2 Casing inner 7.8 15.0 17.0 20.0  
1-2 Casing inner 7.8 15.0 17.0 20.0  
1-2 Casing inner 7.8 15.0 17.0 20.0  
1-2 Casing inner 7.8 15.0 17.0 20.0  
1-2 Casing inner 7.8 15.0 17.0 20.0  
1-2 Casing inner 7.8 15.0 17.0 20.0  
1-2 Casing inner 7.8 15.0 17.0 20.0  
1-2 Casing inner 7.8 15.0 17.0 20.0  
1-2 Casing inner 7.8 15.0 17.0 20.0  
1-2 Casing inner 7.8 15.0 17.0 20.0  
1-2 Casing inner 7.8 15.0 17.0 20.0  
1-2 Casing inner 7.8 15.0 17.0 20.0  
1-2 Casing inner 7.8 15.0 17.0 20.0  
1-2 Casing inner 7.8 15.0 17.0 20.0  
1-2 Casing inner 7.8 15.0 17.0 20.0  
1-2 Casing inner 7.8 15.0 17.0 20.0  
1-2 Casing inner 7.8 15.0 17.0 20.0  
1-2 Casing inner 7.8 15.0 17.0 20.0  
1-2 Casing inner 7.8 15.0 17.0 20.0  
1-2 Casing inner 7.8 15.0 17.0 20.0  
1-2 Casing inner 7.8 15.0 17.0 20.0  
1-2 Casing inner 7.8 15.0 17.0 20.0  
1-2 Casing inner 7.8 15.0 17.0 20.0  
1-2 Casing inner 7.8 15.0 17.0 20.0  
1-2 Casing inner 7.8 15.0 17.0 20.0  
1-2 Casing inner 7.8 15.0 17.0 20.0  
1-2 Casing inner 7.8 15.0 17.0 20.0  
1-2 Casing inner 7.8 15.0 17.0 20.0  
1-2 Casing inner 7.8 15.0 17.0 20.0  
1-2 Casing inner 7.8 15.0 17.0 20.0  
1-2 Casing inner 7.8 15.0 17.0 20.0  
1-2 Casing inner 7.8 15.0 17.0 20.0  
1-2 Casing inner 7.8 15.0 17.0 20.0  
1-2 Casing inner 7.8 15.0 17.0 20.0  
1-2 Casing inner 7.8 15.0 17.0 20.0  
1-2 Casing inner 7.8 15.0 17.0 20.0  
1-2 Casing inner 7.8 15.0 17.0 20.0  
1-2 Casing inner 7.8 15.0 17.0 20.0  
1-2 Casing inner 7.8 15.0 17.0 20.0  
1-2 Casing inner 7.8 15.0 17.0 20.0  
1-2 Casing inner 7.8 15.0 17.0 20.0  
1-2 Casing inner 7.8 15.0 17.0 20.0  
1-2 Casing inner 7.8 15.0 17.0 20.0  
1-2 Casing inner 7.8 15.0 17.0 2





Whiting Oil & Gas Corp  
1700 Broadway, Suite 2300  
Denver, CO 80290  
(303) 837-1661

Completion Report Info -- CR  
Well Name: RAZOR FEDERAL 26J-3511A

WPC ID	API Number	N/S Dist (ft)	N/S Ref	E/W Dist (ft)	E/W Ref	Lot	Quarter 1	Quarter 2	Quarter 3	Quarter 4	Section	Township	Twnshp...	Range	Rng E/W...	
1C00761027	051233834600	2,326.0	FSL	1,947.0	FEL		NW	SE			26	10	N		58 W	
Field Name		County		State		Gr Elev (ft)		Orig KB Elv (ft)		KB-Grd (ft)		Orig Spud Date		Completion Date		First Prod Date
DJ Horizontal Niobrara		Weld		CO		4,725.60		4,742.60		17.00		4/22/2014		7/29/2014		8/19/2014
Operator		Responsible Drilling		Responsible Engineer		Responsible Foreman		Responsible Geology		Well Permit Number						
Lateral/Horizontal - Original Hole, 12/9/2014 3:42:06 PM																
MD (ftKB)	Vertical schematic (actual)					Other In Hole										
						Description	OD (in)	Run Date	Pull Date	Top Depth (ftKB)	Btm (ftKB)					
						CFP	4		8/19/2014	6,174.0	6,176.0					
						Comment	Isolation									
97.1						Description	OD (in)	Run Date	Pull Date	Top Depth (ftKB)	Btm (ftKB)					
						CFP	4		8/19/2014	6,323.0	6,325.0					
1,841.2						Comment	Isolation									
4,079.7						Description	OD (in)	Run Date	Pull Date	Top Depth (ftKB)	Btm (ftKB)					
						CFP	4		8/19/2014	6,468.0	6,470.0					
4,858.9						Comment	Isolation									
5,593.5						Description	OD (in)	Run Date	Pull Date	Top Depth (ftKB)	Btm (ftKB)					
						CFP	4		8/19/2014	6,629.0	6,631.0					
5,978.7						Comment	Isolation									
6,098.1						Description	OD (in)	Run Date	Pull Date	Top Depth (ftKB)	Btm (ftKB)					
						CFP	4		8/19/2014	6,774.0	6,776.0					
6,244.1						Comment	Isolation									
6,355.0						Description	OD (in)	Run Date	Pull Date	Top Depth (ftKB)	Btm (ftKB)					
						CFP	4		8/19/2014	6,935.0	6,937.0					
6,505.9						Comment	Isolation									
6,630.9						Description	OD (in)	Run Date	Pull Date	Top Depth (ftKB)	Btm (ftKB)					
						CFP	4		8/19/2014	7,080.0	7,082.0					
6,773.9						Comment	Isolation									
6,903.9						Description	OD (in)	Run Date	Pull Date	Top Depth (ftKB)	Btm (ftKB)					
						CFP	4		8/19/2014	7,241.0	7,243.0					
7,058.1						Comment	Isolation									
7,169.9						Description	OD (in)	Run Date	Pull Date	Top Depth (ftKB)	Btm (ftKB)					
						CFP	4		8/19/2014	7,389.0	7,391.0					
7,324.1						Comment	Isolation									
7,425.9						Description	OD (in)	Run Date	Pull Date	Top Depth (ftKB)	Btm (ftKB)					
						CFP	4		8/19/2014	7,547.0	7,549.0					
7,584.0						Comment	Isolation									
7,695.9						Description	OD (in)	Run Date	Pull Date	Top Depth (ftKB)	Btm (ftKB)					
						CFP	4		8/19/2014	7,694.0	7,696.0					
7,853.0						Comment	Isolation									
7,978.0						Description	OD (in)	Run Date	Pull Date	Top Depth (ftKB)	Btm (ftKB)					
						CFP	4		8/19/2014	7,853.0	7,855.0					
8,128.9						Comment	Isolation									
8,243.1						Description	OD (in)	Run Date	Pull Date	Top Depth (ftKB)	Btm (ftKB)					
						CFP	4		8/19/2014	7,853.0	7,855.0					
8,392.1						Comment	Isolation									
8,551.8						Description	OD (in)	Run Date	Pull Date	Top Depth (ftKB)	Btm (ftKB)					
						CFP	4		8/19/2014	8,000.0	8,002.0					
8,698.2						Comment	Isolation									
8,898.2						Description	OD (in)	Run Date	Pull Date	Top Depth (ftKB)	Btm (ftKB)					
						CFP	4		8/19/2014	8,159.0	8,161.0					
8,791.0						Comment	Isolation									
8,854.1						Description	OD (in)	Run Date	Pull Date	Top Depth (ftKB)	Btm (ftKB)					
						CFP	4		8/19/2014	8,310.0	8,312.0					
9,079.1						Comment	Isolation									
9,230.0						Description	OD (in)	Run Date	Pull Date	Top Depth (ftKB)	Btm (ftKB)					
						CFP	4		8/19/2014	8,310.0	8,312.0					
9,355.0						Comment	Isolation									
9,492.1						Description	OD (in)	Run Date	Pull Date	Top Depth (ftKB)	Btm (ftKB)					
						CFP	4		8/19/2014	8,618.0	8,620.0					
9,618.1						Comment	Isolation									
9,757.9						Description	OD (in)	Run Date	Pull Date	Top Depth (ftKB)	Btm (ftKB)					
						CFP	4		8/19/2014	8,771.0	8,773.0					
9,874.0						Comment	Isolation									
10,023.0						Description	OD (in)	Run Date	Pull Date	Top Depth (ftKB)	Btm (ftKB)					
						CFP	4		8/20/2014	8,924.0	8,926.0					
10,149.9						Comment	Isolation									
10,300.9						Description	OD (in)	Run Date	Pull Date	Top Depth (ftKB)	Btm (ftKB)					
						CFP	4		8/20/2014	9,077.0	9,079.0					
10,418.0						Comment	Isolation									
10,577.1						Description	OD (in)	Run Date	Pull Date	Top Depth (ftKB)	Btm (ftKB)					
						CFP	4		8/20/2014	9,230.0	9,232.0					
10,682.1						Comment	Isolation									
10,836.9						Description	OD (in)	Run Date	Pull Date	Top Depth (ftKB)	Btm (ftKB)					
						CFP	4		8/20/2014	9,386.0	9,388.0					
10,944.9						Comment	Isolation									
11,096.1						Description	OD (in)	Run Date	Pull Date	Top Depth (ftKB)	Btm (ftKB)					
						CFP	4		8/20/2014	9,536.0	9,538.0					
11,207.0						Comment	Isolation									
11,372.0						Description	OD (in)	Run Date	Pull Date	Top Depth (ftKB)	Btm (ftKB)					
						CFP	4		8/20/2014	9,689.0	9,691.0					
11,497.0						Comment	Isolation									
11,648.0						Description	OD (in)	Run Date	Pull Date	Top Depth (ftKB)	Btm (ftKB)					
						CFP	4		8/20/2014	9,842.0	9,844.0					
11,759.8						Comment	Isolation									
11,911.1						Description	OD (in)	Run Date	Pull Date	Top Depth (ftKB)	Btm (ftKB)					
						CFP	4		8/20/2014	9,842.0	9,844.0					
12,045.9						Comment	Isolation									
12,190.0						Description	OD (in)	Run Date	Pull Date	Top Depth (ftKB)	Btm (ftKB)					
						CFP	4		8/20/2014	9,842.0	9,844.0					
						Comment	Isolation									



Whiting Oil & Gas Corp  
1700 Broadway, Suite 2300  
Denver, CO 80290  
(303) 837-1661

Completion Report Info -- CR  
Well Name: RAZOR FEDERAL 26J-3511A

WPC ID 1CO0761027	API Number 05123383460 0	N/S Dist (ft) 2,326.0	N/S Ref FSL	E/W Dist (ft) 1,947.0	E/W Ref FEL	Lot	Quarter 1 NW	Quarter 2 SE	Quarter 3	Quarter 4	Section 26	Township 10	Twnshp... N	Range 58	Rng E/W... W
Field Name DJ Horizontal Niobrara	County Weld	State CO	Gr Elev (ft) 4,725.60	Orig KB Elv (ft) 4,742.60	KB-Grd (ft) 17.00	Orig Spud Date 4/22/2014	Completion Date 7/29/2014	First Prod Date 8/19/2014							
Operator		Responsible Drilling		Responsible Engineer		Responsible Foreman		Responsible Geology		Well Permit Number					

Lateral/Horizontal - Original Hole, 12/9/2014 3:42:08 PM		Other In Hole						
MD (ftKB)	Vertical schematic (actual)	Description	OD (in)	Run Date	Pull Date	Top Depth (ftKB)	Btm (ftKB)	
		CFP	4		8/20/2014	9,997.0	9,999.0	
		Comment						
		Isolation						
		Description	OD (in)	Run Date	Pull Date	Top Depth (ftKB)	Btm (ftKB)	
		CFP	4		8/20/2014	10,148.0	10,150.0	
		Comment						
		Isolation						
		Description	OD (in)	Run Date	Pull Date	Top Depth (ftKB)	Btm (ftKB)	
		CFP	4		8/20/2014	10,301.0	10,303.0	
		Comment						
		Isolation						
		Description	OD (in)	Run Date	Pull Date	Top Depth (ftKB)	Btm (ftKB)	
		CFP	4		8/20/2014	10,454.0	10,456.0	
		Comment						
		Isolation						
		Description	OD (in)	Run Date	Pull Date	Top Depth (ftKB)	Btm (ftKB)	
		CFP	4		8/20/2014	10,612.0	10,614.0	
		Comment						
		Isolation						
		Description	OD (in)	Run Date	Pull Date	Top Depth (ftKB)	Btm (ftKB)	
		CFP	4		8/20/2014	10,760.0	10,762.0	
		Comment						
		Isolation						
		Description	OD (in)	Run Date	Pull Date	Top Depth (ftKB)	Btm (ftKB)	
		CFP	4		8/20/2014	10,902.0	10,904.0	
		Comment						
		Isolation						
		Description	OD (in)	Run Date	Pull Date	Top Depth (ftKB)	Btm (ftKB)	
		CFP	4		8/20/2014	11,066.0	11,068.0	
		Comment						
		Isolation						
		Description	OD (in)	Run Date	Pull Date	Top Depth (ftKB)	Btm (ftKB)	
		CFP	4		8/20/2014	11,205.0	11,207.0	
		Comment						
		Isolation						
		Description	OD (in)	Run Date	Pull Date	Top Depth (ftKB)	Btm (ftKB)	
		CFP	4		8/20/2014	11,372.0	11,374.0	
		Comment						
		Isolation						
		Description	OD (in)	Run Date	Pull Date	Top Depth (ftKB)	Btm (ftKB)	
		CFP	4		8/20/2014	11,516.0	11,518.0	
		Comment						
		Isolation						
		Description	OD (in)	Run Date	Pull Date	Top Depth (ftKB)	Btm (ftKB)	
		CFP	4		8/20/2014	11,678.0	11,680.0	
		Comment						
		Isolation						
		Description	OD (in)	Run Date	Pull Date	Top Depth (ftKB)	Btm (ftKB)	
		CFP	4		8/20/2014	11,824.0	11,826.0	
		Comment						
		Isolation						
		Bottom Hole Cores						
		Core #	Date	Top (ftKB)	Btm (ftKB)	Wellbore	Recovered (ft)	% Rec..
		Comment						