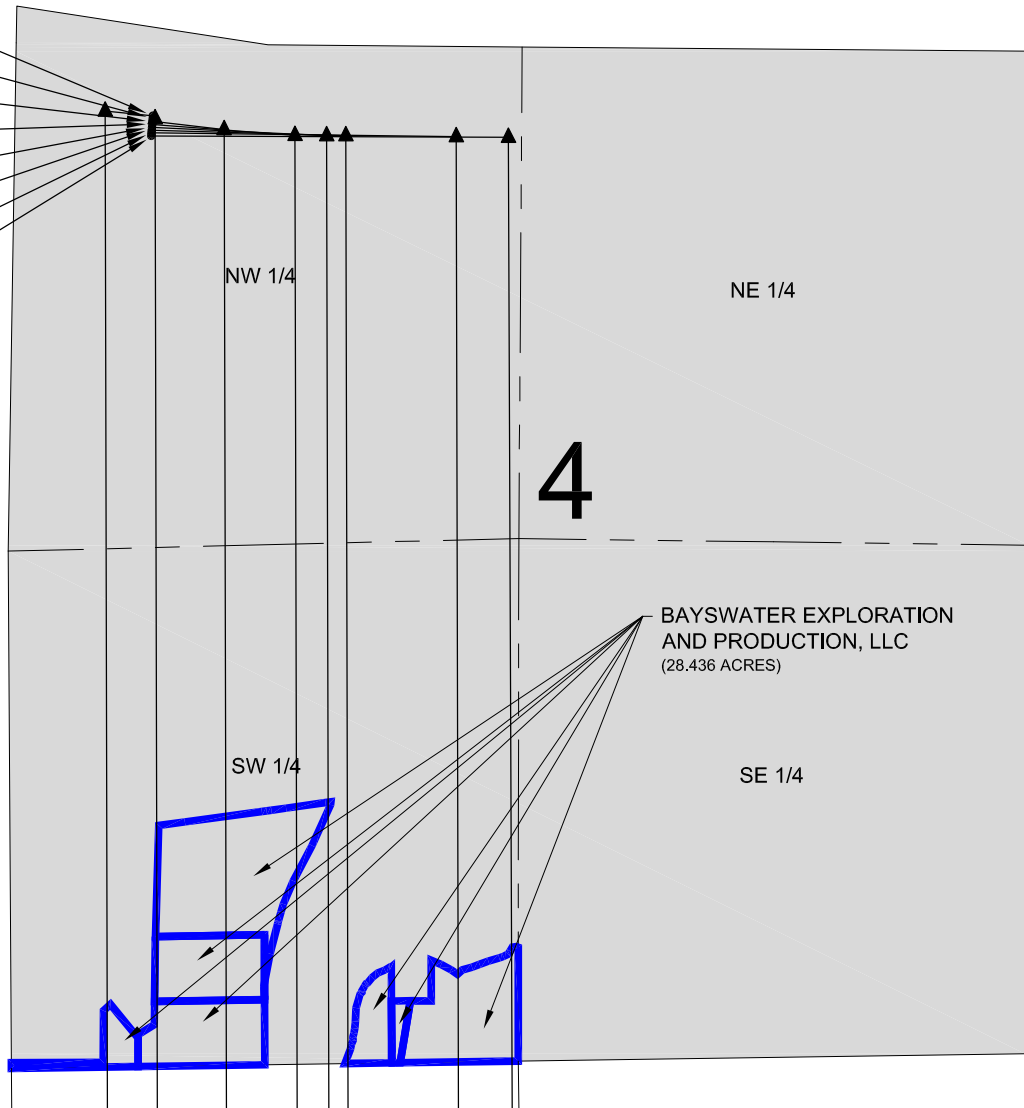


# LEASE DRAWING: SHERLEY 4-9H PAD

SHERLEY C-4-9HN  
SHERLEY D-4-9HN  
SHERLEY E-4-9HN  
SHERLEY F-4-9HN  
SHERLEY G-4-9HC  
SHERLEY H-4-9HN  
SHERLEY I-4-9HN  
SHERLEY J-4-9HN



BAYSWATER EXPLORATION  
AND PRODUCTION, LLC  
(28.436 ACRES)

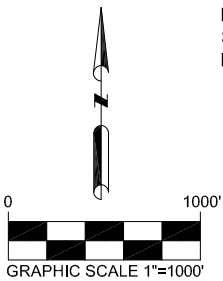
## NOTES:

SHERLEY C-4-9HN TO BE AT 486' FNL, 716' FWL.  
BOTTOM HOLE AT 470' FSL & 470' FWL, SEC 9.  
SHERLEY D-4-9HN TO BE AT 501' FNL, 715' FWL.  
BOTTOM HOLE AT 470' FSL & 730' FWL, SEC 9.  
SHERLEY E-4-9HN TO BE AT 516' FNL, 714' FWL.  
BOTTOM HOLE AT 470' FSL & 1090' FWL, SEC 9.  
SHERLEY F-4-9HN TO BE AT 531' FNL, 713' FWL.  
BOTTOM HOLE AT 470' FSL & 1460' FWL, SEC 9.

SHERLEY G-4-9HC TO BE AT 546' FNL, 712' FWL.  
BOTTOM HOLE AT 470' FSL & 1625' FWL, SEC 9.  
SHERLEY H-4-9HN TO BE AT 561' FNL, 711' FWL.  
BOTTOM HOLE AT 470' FSL & 1725' FWL, SEC 9.  
SHERLEY I-4-9HN TO BE AT 576' FNL, 710' FWL.  
BOTTOM HOLE AT 470' FSL & 2300' FWL, SEC 9.  
SHERLEY J-4-9HN TO BE AT 591' FNL, 709' FWL.  
BOTTOM HOLE AT 465' FSL & 2585' FWL, SEC 9.

## LEGEND

- ⊙ = EXISTING MONUMENT
- ◆ = EXISTING WELL
- = PROPOSED WELL
- ▲ = LANDING POINT
- ⊙ = BOTTOM HOLE
- = LEASE LINES



PREPARED BY:



FIELD DATE:  
10-03-14

DRAWING DATE:  
10-26-14

BY:  
KAD

CHECKED BY:  
SWW

SITE NAME:

SHERLEY 4-9H PAD

SURFACE LOCATION:

NW 1/4, NW 1/4, SEC. 4, T5N, R65W, 6TH P.M.  
WELD COUNTY, COLORADO

PREPARED FOR:

