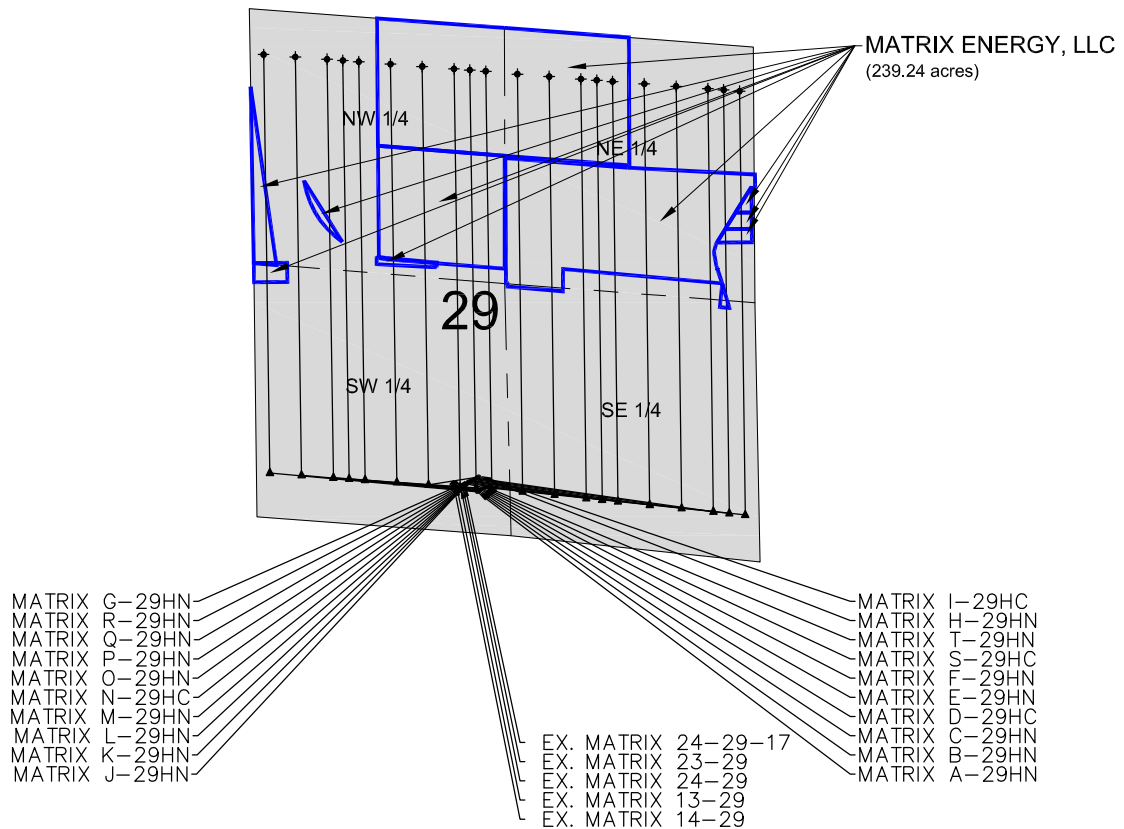


LEASE DRAWING: MATRIX 29-O



NOTES:

MATRIX A-29HN TO BE AT 427' FSL, 2297' FWL.
 BOTTOM HOLE AT 465' FNL & 140' FWL, SEC 29.
 MATRIX B-29HN TO BE AT 435' FSL, 2309' FWL.
 BOTTOM HOLE AT 465' FNL & 470' FWL, SEC 29.
 MATRIX C-29HN TO BE AT 444' FSL, 2322' FWL.
 BOTTOM HOLE AT 465' FNL & 800' FWL, SEC 29.
 MATRIX D-29HC TO BE AT 453' FSL, 2335' FWL.
 BOTTOM HOLE AT 465' FNL & 965' FWL, SEC 29.
 MATRIX E-29HN TO BE AT 462' FSL, 2348' FWL.
 BOTTOM HOLE AT 465' FNL & 1130' FWL, SEC 29.
 MATRIX F-29HN TO BE AT 470' FSL, 2361' FWL.
 BOTTOM HOLE AT 465' FNL & 1460' FWL, SEC 29.
 MATRIX G-29HN TO BE AT 581' FSL, 2302' FWL.
 BOTTOM HOLE AT 465' FNL & 1790' FWL, SEC 29.
 MATRIX H-29HN TO BE AT 589' FSL, 2315' FWL.
 BOTTOM HOLE AT 465' FNL & 2120' FWL, SEC 29.
 MATRIX I-29HC TO BE AT 598' FSL, 2328' FWL.
 BOTTOM HOLE AT 465' FNL & 2285' FWL, SEC 29.
 MATRIX J-29HN TO BE AT 502' FSL, 2186' FWL.
 BOTTOM HOLE AT 465' FNL & 2450' FWL, SEC 29.

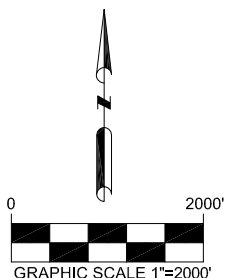
NOTES:

MATRIX K-29HN TO BE AT 511' FSL, 2199' FWL.
 BOTTOM HOLE AT 470' FNL & 2458' FEL, SEC 29.
 MATRIX L-29HN TO BE AT 520' FSL, 2212' FWL.
 BOTTOM HOLE AT 470' FNL & 2127' FEL, SEC 29.
 MATRIX M-29HN TO BE AT 528' FSL, 2224' FWL.
 BOTTOM HOLE AT 470' FNL & 1797' FEL, SEC 29.
 MATRIX N-29HC TO BE AT 537' FSL, 2237' FWL.
 BOTTOM HOLE AT 470' FNL & 1632' FEL, SEC 29.
 MATRIX O-29HN TO BE AT 546' FSL, 2250' FWL.
 BOTTOM HOLE AT 470' FNL & 1467' FEL, SEC 29.
 MATRIX P-29HN TO BE AT 555' FSL, 2263' FWL.
 BOTTOM HOLE AT 470' FNL & 1137' FEL, SEC 29.
 MATRIX Q-29HN TO BE AT 563' FSL, 2276' FWL.
 BOTTOM HOLE AT 470' FNL & 806' FEL, SEC 29.
 MATRIX R-29HN TO BE AT 572' FSL, 2289' FWL.
 BOTTOM HOLE AT 470' FNL & 476' FEL, SEC 29.
 MATRIX S-29HC TO BE AT 479' FSL, 2374' FWL.
 BOTTOM HOLE AT 470' FNL & 311' FEL, SEC 29.
 MATRIX T-29HN TO BE AT 488' FSL, 2387' FWL.
 BOTTOM HOLE AT 470' FNL & 146' FEL, SEC 29.

EX. MATRIX 24-29-17 IS AT 491' FSL, 2168' FWL.
 EX. MATRIX 23-29 IS AT 476' FSL, 2147' FWL.
 EX. MATRIX 24-29 IS AT 462' FSL, 2126' FWL.
 EX. MATRIX 14-29 IS AT 489' FSL, 2078' FWL.
 EX. MATRIX 13-29 IS AT 490' FSL, 2049' FWL.

LEGEND

- ⊙ = EXISTING MONUMENT
- ◆ = EXISTING WELL
- = PROPOSED WELL
- ▲ = LANDING POINT
- ⬤ = BOTTOM HOLE
- = LEASE LINES



PREPARED BY:



FIELD DATE:
07-10-14

DRAWING DATE:
10-14-14

BY:
SWW

CHECKED BY:
KAD

SITE NAME:

MATRIX 29-O PAD

SURFACE LOCATION:

SE 1/4, SW 1/4, SEC. 29, T6N, R65W, 6TH P.M.
 WELD COUNTY, COLORADO

PREPARED FOR:

