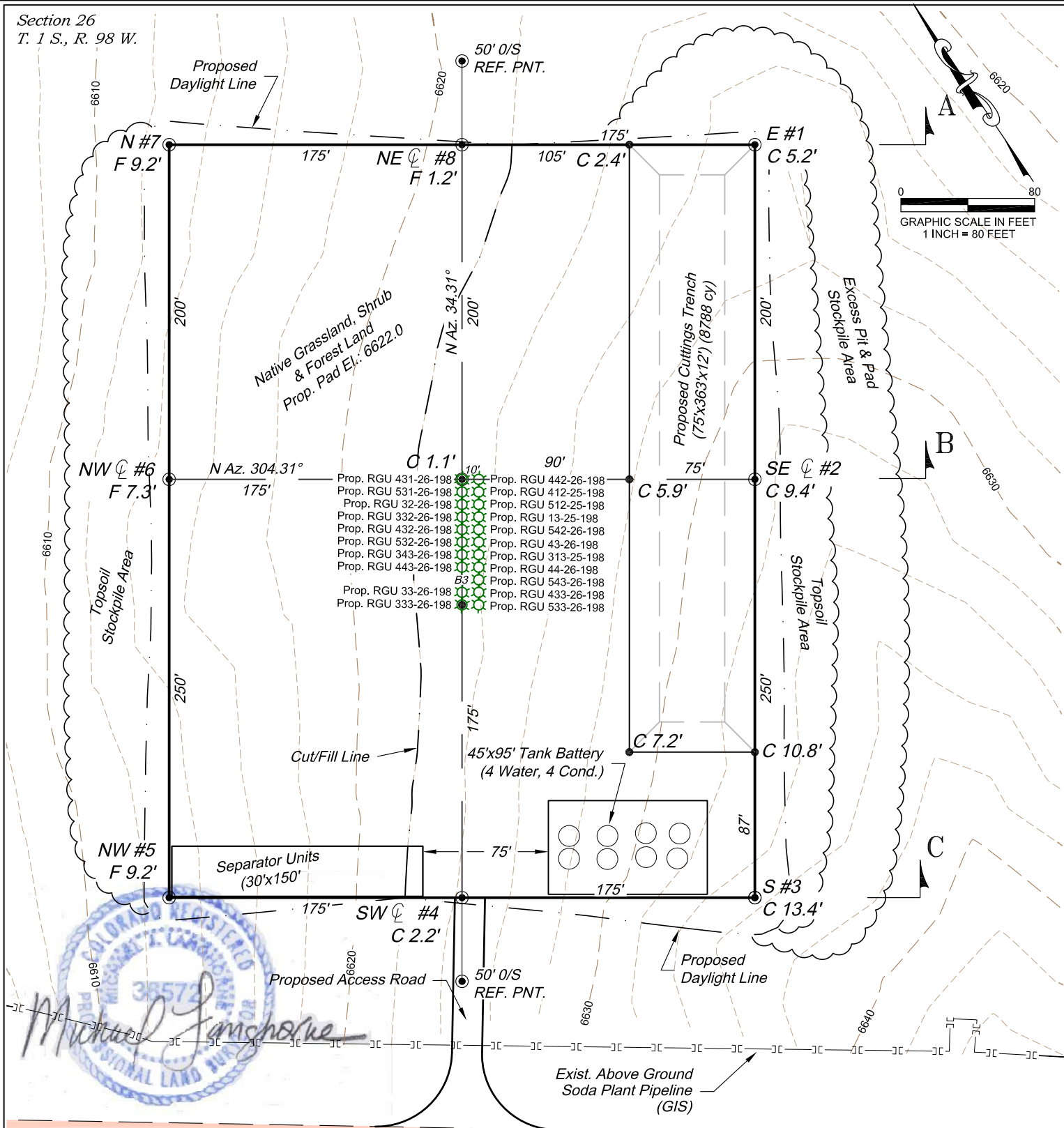


Section 26  
T. 1 S., R. 98 W.



# ESTIMATED EARTHWORK QUANTITIES (cy)

ITEM	CUT	FILL	TOPSOIL	EXCESS
PAD	18401	11499	6510	392
PIT	9660			9660
TOTALS	28061	11499	6510	10052

Exist. County Road

## \*NOTE:

- 1.) 10% SWELL FACTOR APPLIED TO CUT VOLUME.
- 2.) TOPSOIL VOLUME BASED ON 12" SOIL DEPTH.
- 3.) TOTAL DISTURBED AREA = 6.78 ac.

REVISED: 9/16/14

136 East Third Street  
Rifle, Colorado 81650  
Ph. (970) 625-2720  
Fax (970) 625-2773



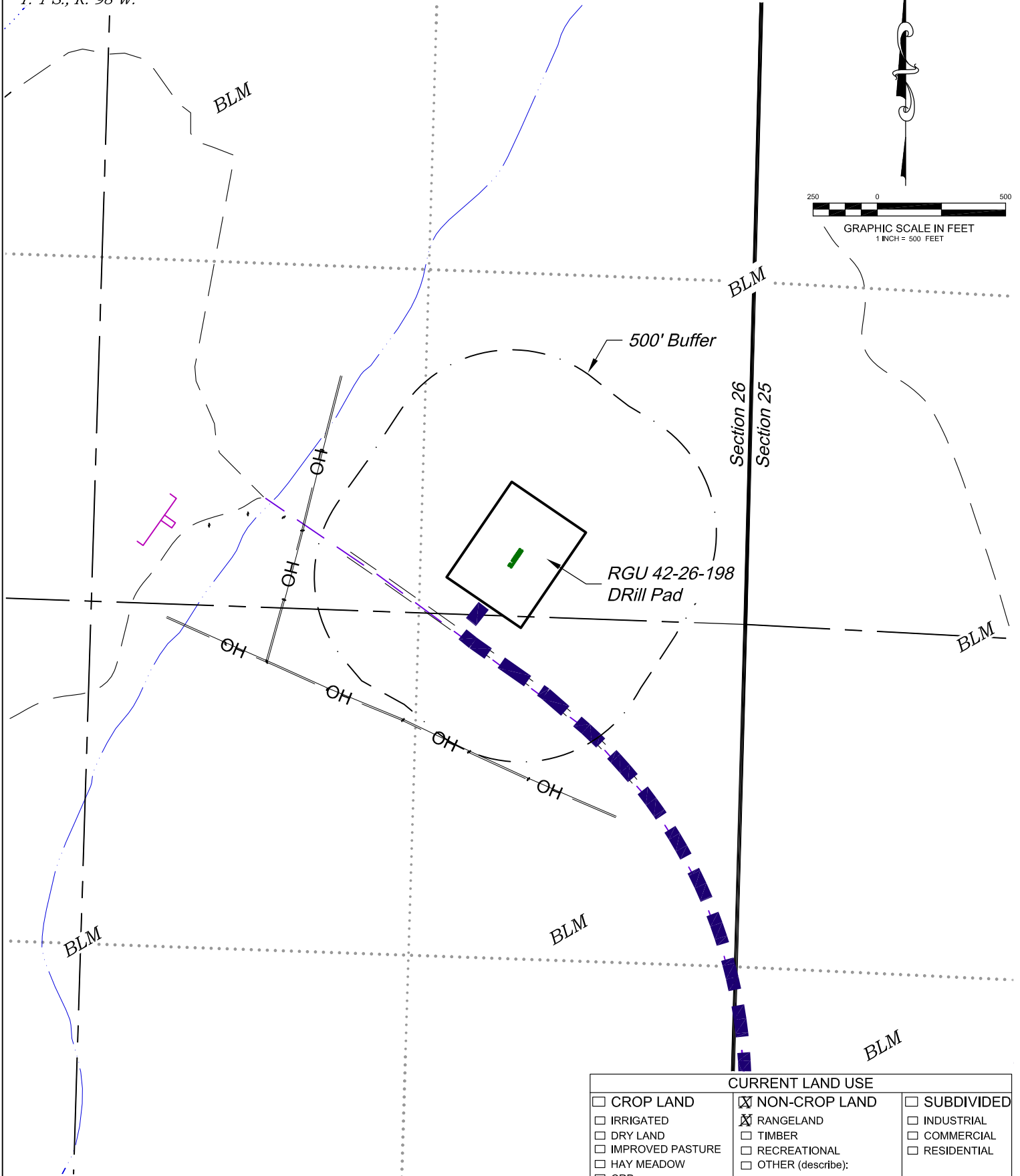
**BOOKCLIFF**  
Survey Services, Inc.

SCALE: 1" = 80'  
DATE: 2/21/13  
PLAT: 2 of 7  
PROJECT: Highlands  
DFT: cws

**Construction Plan Prepared for:**  
**WPXENERGY** WPX Energy Rocky Mountain, LLC

RGU 42-26-198 Drill Pad - Plat 2  
CONSTRUCTION LAYOUT

Section 26  
T. 1 S., R. 98 W.



CURRENT LAND USE		
<input type="checkbox"/> CROP LAND	<input checked="" type="checkbox"/> NON-CROP LAND	<input type="checkbox"/> SUBDIVIDED
<input type="checkbox"/> IRRIGATED	<input checked="" type="checkbox"/> RANGELAND	<input type="checkbox"/> INDUSTRIAL
<input type="checkbox"/> DRY LAND	<input type="checkbox"/> TIMBER	<input type="checkbox"/> COMMERCIAL
<input type="checkbox"/> IMPROVED PASTURE	<input type="checkbox"/> RECREATIONAL	<input type="checkbox"/> RESIDENTIAL
<input type="checkbox"/> HAY MEADOW	<input type="checkbox"/> OTHER (describe):	
<input type="checkbox"/> CRP		

REVISED: 9/4/14

SCALE: 1" = 500'  
DATE: 2/21/13  
PLAT: 6 of 7  
PROJECT: Highlands  
DFT: cws

136 East Third Street  
Rifle, Colorado 81650  
Ph. (970) 625-2720  
Fax (970) 625-2773

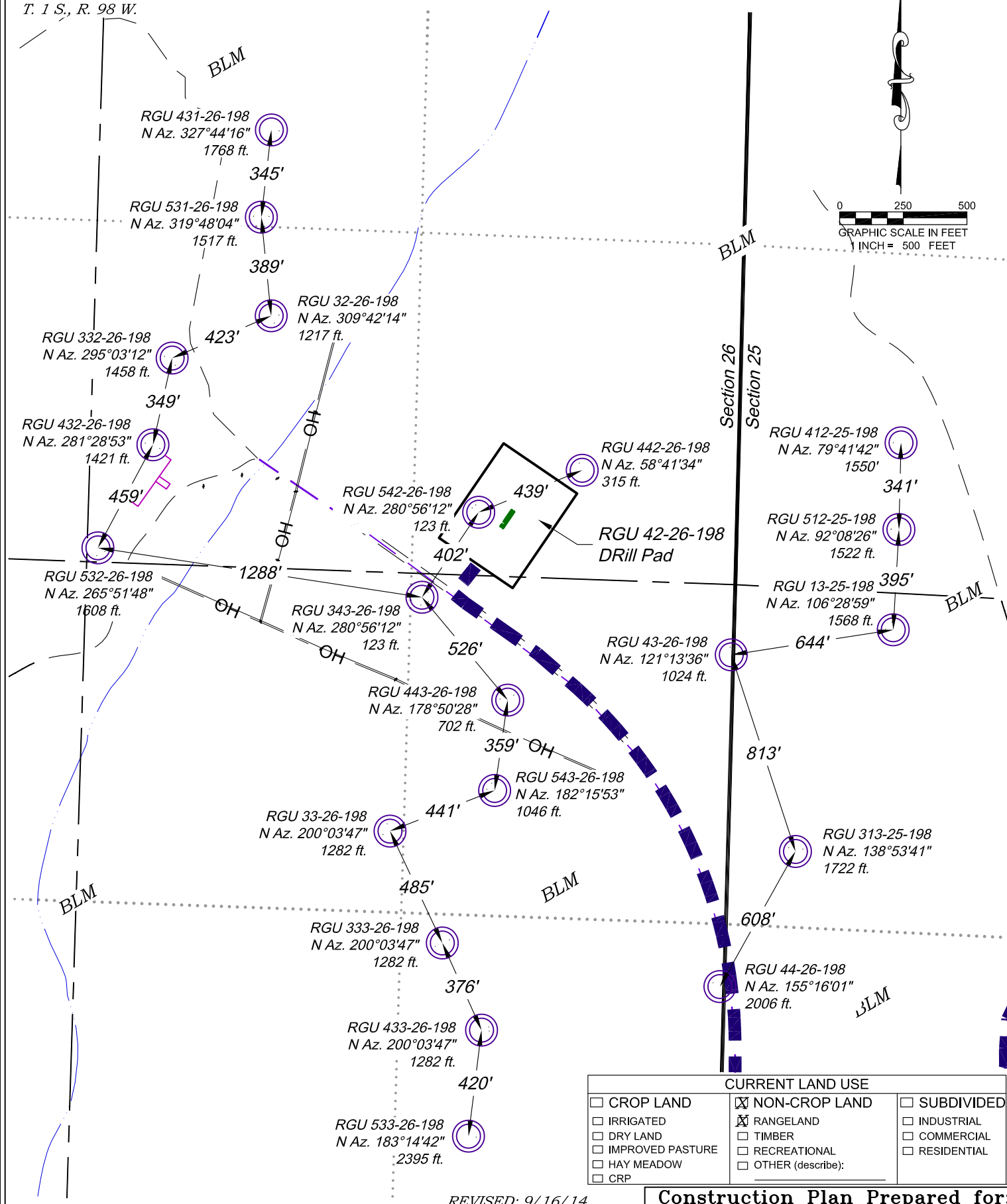


**BOOKCLIFF**  
Survey Services, Inc.

**Construction Plan Prepared for:**  
**WPXENERGY** WPX Energy Rocky Mountain, LLC

RGU 42-26-198 Drill Pad - Plat 6  
LOCATION MAP

Section 26  
T. 1 S., R. 98 W.



CURRENT LAND USE		
<input type="checkbox"/> CROP LAND	<input checked="" type="checkbox"/> NON-CROP LAND	<input type="checkbox"/> SUBDIVIDED
<input type="checkbox"/> IRRIGATED	<input checked="" type="checkbox"/> RANGELAND	<input type="checkbox"/> INDUSTRIAL
<input type="checkbox"/> DRY LAND	<input type="checkbox"/> TIMBER	<input type="checkbox"/> COMMERCIAL
<input type="checkbox"/> IMPROVED PASTURE	<input type="checkbox"/> RECREATIONAL	<input type="checkbox"/> RESIDENTIAL
<input type="checkbox"/> HAY MEADOW	<input type="checkbox"/> OTHER (describe):	
<input type="checkbox"/> CRP		

REVISED: 9/16/14

SCALE: 1" = 500'  
DATE: 2/21/13  
PLAT: 6 of 7A  
PROJECT: Highlands  
DFT: cws

**Construction Plan Prepared for:**  
**WPXENERGY** WPX Energy Rocky Mountain, LLC  
**RGU 42-26-198 Drill Pad - Plat 6A**  
**LOCATION MAP**

136 East Third Street  
Rifle, Colorado 81650  
Ph. (970) 625-2720  
Fax (970) 625-2773



*Visible Improvements to Well Head (ft.)*

<i>Description</i>	<i>Building</i>	<i>Building Unit</i>	<i>High Occu. Building</i>	<i>DOAA</i>	<i>Public Road</i>	<i>Above Ground Utility</i>	<i>Railroad</i>	<i>Property Line</i>
RGU 533-26-198	277° 1310	277° 1310	>5280	>5280	215° 313	206° 717	>5280	>5280
RGU 433-26-198	277° 1314	277° 1314	>5280	>5280	215° 320	206° 724	>5280	>5280
RGU 543-26-198	276° 1321	276° 1321	>5280	>5280	215° 328	206° 732	>5280	>5280
RGU 44-26-198	276° 1324	276° 1324	>5280	>5280	215° 335	206° 739	>5280	>5280
RGU 313-25-198	276° 1328	276° 1328	>5280	>5280	215° 343	206° 747	>5280	>5280
RGU 43-26-198	276° 1331	276° 1331	>5280	>5280	215° 350	206° 754	>5280	>5280
RGU 542-26-198	275° 1335	275° 1335	>5280	>5280	215° 358	206° 762	>5280	>5280
RGU 13-25-198	275° 1339	275° 1339	>5280	>5280	215° 365	206° 769	>5280	>5280
RGU 512-25-198	275° 1342	275° 1342	>5280	>5280	215° 373	206° 776	>5280	>5280
RGU 412-25-198	274° 1346	274° 1346	>5280	>5280	215° 380	206° 784	>5280	>5280
RGU 442-26-198	277° 1319	277° 1319	>5280	>5280	215° 388	206° 791	>5280	>5280
RGU 333-26-198	277° 1323	277° 1323	>5280	>5280	215° 313	206° 719	>5280	>5280
RGU 33-26-198	277° 1326	277° 1326	>5280	>5280	215° 320	206° 726	>5280	>5280
RGU 443-26-198	277° 1329	277° 1329	>5280	>5280	215° 335	206° 741	>5280	>5280
RGU 343-26-198	276° 1333	276° 1333	>5280	>5280	215° 343	206° 748	>5280	>5280
RGU 532-26-198	276° 1336	276° 1336	>5280	>5280	215° 350	206° 756	>5280	>5280
RGU 432-26-198	276° 1340	276° 1340	>5280	>5280	215° 358	206° 763	>5280	>5280
RGU 332-26-198	275° 1344	275° 1344	>5280	>5280	215° 365	206° 770	>5280	>5280
RGU 32-26-198	275° 1347	275° 1347	>5280	>5280	215° 373	206° 778	>5280	>5280
RGU 531-26-198	275° 1351	275° 1351	>5280	>5280	215° 380	206° 785	>5280	>5280
RGU 431-26-198	275° 1355	275° 1355	>5280	>5280	215° 388	206° 793	>5280	>5280

*Production Equipment*

Seperators	281° 1079	281° 1079	>5280	>5280	215° 135	206° 550	>5280	>5280
Tanks	285° 1290	285° 1290	>5280	>5280	215° 141	206° 527	>5280	>5280

REVISED: 9/4/14

SCALE: NA

DATE: 2/21/13

PLAT: 6B of 7

PROJECT: Highlands

DFT: cws

136 East Third Street  
Rifle, Colorado 81650  
Ph. (970) 625-2720  
Fax (970) 625-2773



**BOOKCLIFF**  
Survey Services, Inc.

**Construction Plan Prepared for:**  
**WPXENERGY** WPX Energy Rocky Mountain, LLC

*RGU 42-26-198 Drill Pad - Plat 6B*  
*LOCATION MAP*