

#### LEGEND:

 PROPOSED LOCATION

#### BILL BARRETT CORPORATION

CB RUDD 6-61-18\_19 SW7 PAD  
#6-61-18-0263BH2  
LOT 4, SECTION 7, T6N, R61W, 6th P.M.  
250' FSL 770' FWL

DRAWN BY: T.W.

DATE DRAWN: 07-14-14

SCALE: 1:100,000

REVISED: 00-00-00

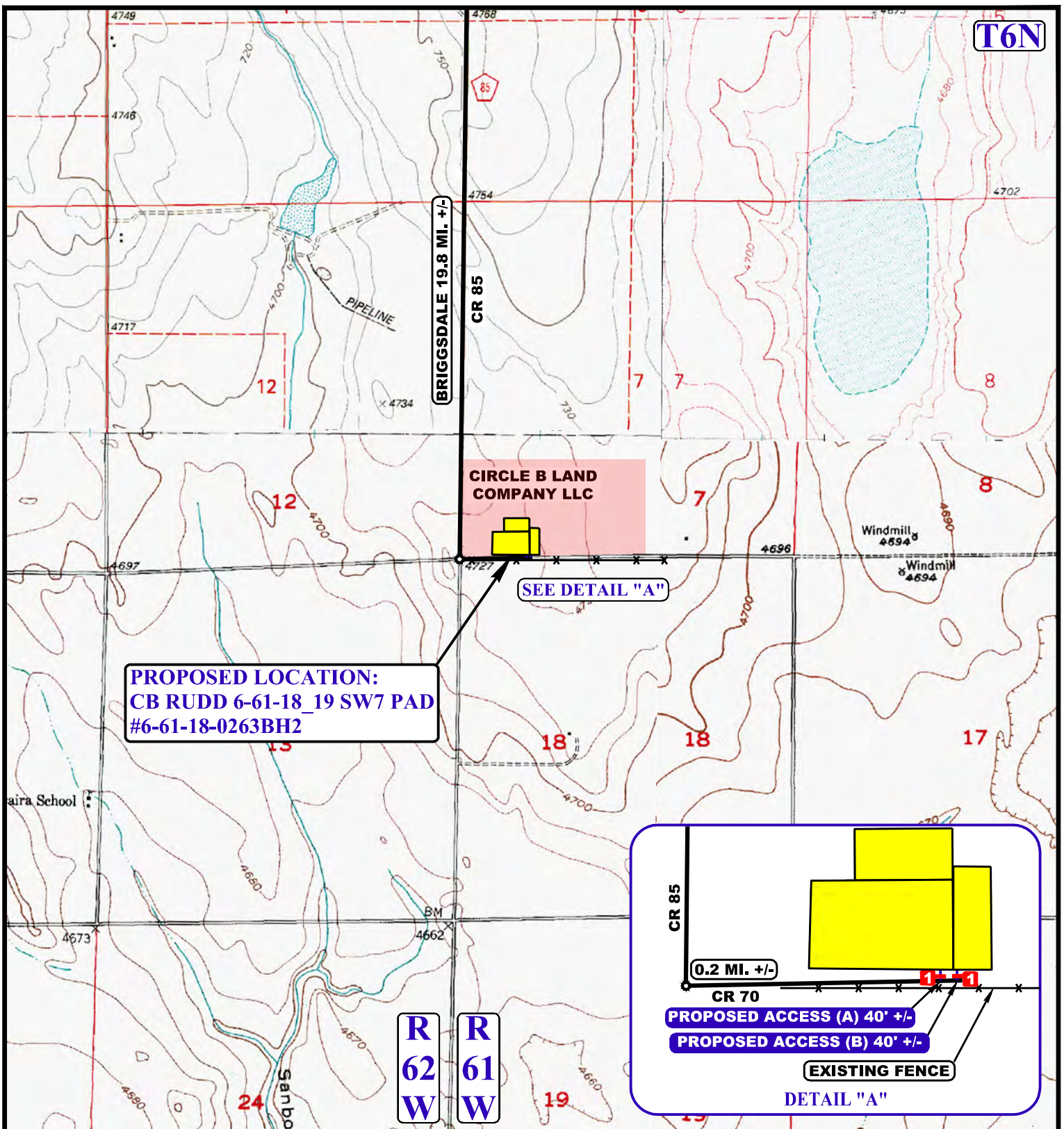
ACCESS ROAD MAP

TOPO A



UELS, LLC  
Corporate Office \* 85 South 200 East  
Vernal, UT 84078 \* (435) 789-1017





PROCEED IN A SOUTHERLY, THEN SOUTHWESTERLY DIRECTION FROM BRIGGSDALE, COLORADO ALONG HIGHWAY 392 APPROXIMATELY 9.7 MILES TO THE JUNCTION OF THIS ROAD AND COUNTY ROAD 74 TO THE EAST; TURN LEFT AND PROCEED IN AN EASTERLY DIRECTION APPROXIMATELY 8.1 MILES TO THE JUNCTION OF THIS ROAD AND COUNTY ROAD 85 TO THE SOUTH; TURN RIGHT AND PROCEED IN A SOUTHERLY DIRECTION APPROXIMATELY 2.0 MILES TO THE JUNCTION OF THIS ROAD AND COUNTY ROAD 70 TO THE EAST; TURN LEFT AND PROCEED IN AN EASTERLY DIRECTION APPROXIMATELY 0.2 MILES TO THE BEGINNING OF THE PROPOSED ACCESS TO THE NORTH; FOLLOW ROAD FLAGS IN A NORTHERLY DIRECTION APPROXIMATELY 40' TO THE PROPOSED LOCATION.

TOTAL DISTANCE FROM BRIGGSDALE, COLORADO TO THE PROPOSED WELL LOCATION IS APPROXIMATELY 20.0 MILES.

**BILL BARRETT CORPORATION**

**CB RUDD 6-61-18 19 SW7 PAD  
#6-61-18-0263BH2  
LOT 4, SECTION 7, T6N, R61W, 6th P.M.  
250' FSL 770' FWL**



**UELS, LLC**  
Corporate Office \* 85 South 200 East  
Vernal, UT 84078 \* (435) 789-1017

DRAWN BY: T.W.

DATE DRAWN: 07-14-14

REVISED: 00-00-00

**ROAD DESCRIPTION**