



FILE NO: CH087278	COMPANY WPX ENERGY INC
API NO: 05045222580000	WELL C & C ENERGY GM 521-13
	FIELD GRAND VALLEY
	COUNTY GARFIELD
	STATE CO
Ver. 3.87 S13 T7S R96W PAD: GM 24-12 RIG: H & P 318	LOCATION: SHL: 274' FSL 1008' FWL S12 T7S R96W BHL: 1054' FNL 2074' FWL S13 T7S R96W SEC 13 TWP 7S RGE 96W
PERMANENT DATUM LOG MEASURED FROM DRILL. MEAS. FROM	OTHER SERVICES RPM ELEVATIONS: KB 5165 FT DF GL 5141 FT
GL KB KB	ELEVATION 5141 FT 24 FT ABOVE P.D.

DATE	29-Jun-2014
RUN	1
TRIP	1
SERVICE ORDER	US087278
DEPTH DRILLER	6347 FT
DEPTH LOGGER	6311 FT
BOTTOM LOGGED INTERVAL	6301 FT
TOP LOGGED INTERVAL	3090 FT
TIME STARTED	20:30
TIME FINISHED	01:00
OPERATOR RIG TIME	5.5HRS
TYPE OF FLUID IN HOLE	WATER
FLUID DENSITY	NA
FLUID SALINITY	NA
FLUID LEVEL	66 FT
LOGGED CEMENT TOP	NA
WELLHEAD PRESSURE	0 PSI
MAXIMUM HOLE DEVIATION	NA
NOMINAL LOGGING SPEED	15 FMN
MAX. RECORDED TEMP.	190 DEGF
REFERENCE LOG	NA
REFERENCE LOG DATE	NA
EQUIP. NO.	6670
LOCATION	GRAND JCT
RECORDED BY	D SMITH
WITNESSED BY	J BRADY

IN MAKING INTERPRETATIONS OF LOGS OUR EMPLOYEES WILL GIVE THE CUSTOMER THE BENEFIT OF THEIR BEST JUDGEMENT. BUT SINCE ALL INTERPRETATIONS ARE OPINIONS BASED ON INFERENCES FROM ELECTRICAL OR OTHER MEASUREMENTS, WE CANNOT, AND WE DO NOT GUARANTEE THE ACCURACY OR CORRECTNESS OF ANY INTERPRETATION. WE SHALL NOT BE LIABLE OR RESPONSIBLE FOR ANY LOSS, COST, DAMAGES, OR EXPENSES WHATSOEVER INCURRED OR SUSTAINED BY THE CUSTOMER RESULTING FROM ANY INTERPRETATION MADE BY ANY OF OUR EMPLOYEES.

#### BOREHOLE RECORD

BIT SIZE	FROM	TO
13.5 IN	0 FT	1660 FT
8.75 IN	1660 FT	6386 FT

#### CASING RECORD

SIZE	WEIGHT	GRADE	FROM	TO
9.625 IN	32.2 LB/F		0 FT	1660 FT
4.5 IN	11.6 LB/F		1660 FT	6386 FT

#### REMARKS

RUN 1 TRIP 1: ALL DATA ON THIS LOG IS SHIFTED USING THE CCL CURVE TO PLACE THE WELLHEAD (TOP CCL MARK) ON DEPTH WITH GROUND LEVEL ELEVATION AT CLIENT'S REQUEST

THE DEPTH MATCHING PROCESS CREATES POTENTIAL FOR COLLAR LENGTHS TO VARY FROM THOSE RECORDED ON OTHER CASED HOLE WIRELINE UNITS WITHOUT A GAMMA RAY REFERENCE

MAX RECORDED TEMP: 190 F

AMOUNT OF LINEAR SHIFT -.0 FT

SJ: 2617 TO 2646

## EQUIPMENT DATA

RUN	TRIP	TOOL	SERIES NO.	SERIAL NO.	POSITION
1	1	ELECTRONICS	8250EA	10314363	FREE
1	1	TELE	8248ED	Z120493	FREE
1	1	GR	2812LA	11701636	FREE
1	1	RPM	8281EA	10273848	FREE
1	1	RPM	8283PA	104662231	FREE
1	1	RPM	8281FA	10307727	FREE
1	1	TEMP	8255XA	Z166341	FREE

## MAIN LOG 5"/100FT SCALE

ECLIPS 6.2i ECLIPS General Release Rel 6.2i Wed Jun 12 12:21:40 CDT 2013

Updates: 1

Plotted: Mon Jun 30 15:19:27 2014

## PARAMETER AND FILTER SUMMARY REPORT

FILE: /dat1a/CH087278/n354hR02.prm  
 LOGGING MODE: DEPTH DIRECTION: UP  
 TOP DEPTH: 2988.250 ft BOTTOM DEPTH: 6322.125 ft

## SYMMETRIC FILTER

MEASUREMENT TYPE	PARAMETER	VALUE	UNITS	INTERVAL (ft)	
GR	FILTER ()	medium (1)		TOP	BOTTOM

## RPM PROCESSING

MEASUREMENT TYPE	PARAMETER	VALUE	UNITS	INTERVAL (ft)	
PNC Parameters	BOREHOLE CONTENTS	FLUID		TOP	BOTTOM
	OPEN/CASED HOLE	CASED HOLE		"	"
	BOREHOLE SIZE	8.75	in	"	"
	CASING SIZE	4.50	in	"	"
	MATRIX	SANDSTONE		"	"
	CORRECTION BUFFER	11		"	"

## CURVE DESCRIPTION REPORT

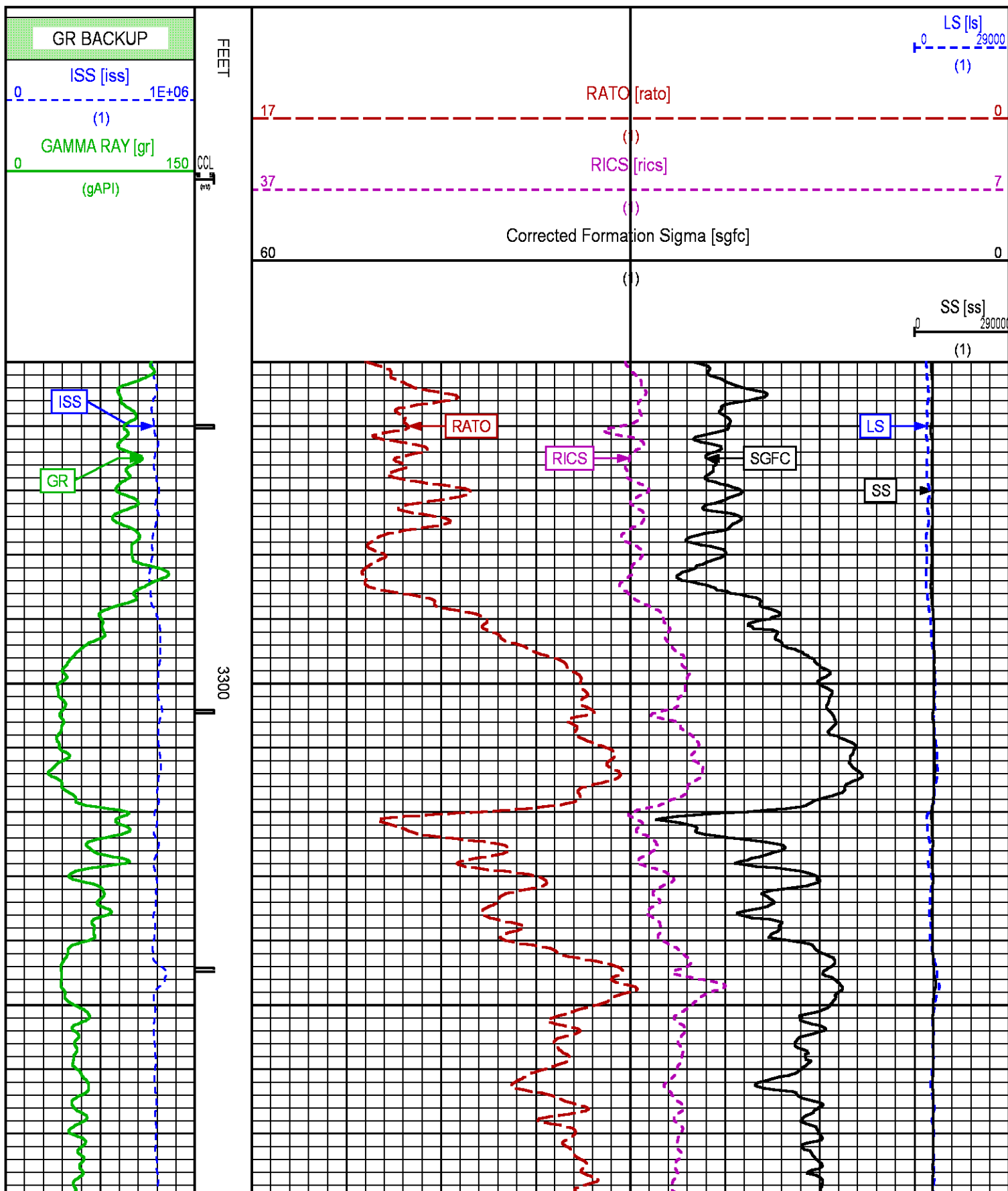
CURVE NAME	CREATION DATE	CURVE DESCRIPTION
F1:CCL	Jun 30 15:00:50 2014	CASING COLLAR LOCATOR
F1:GR	Jun 30 15:00:50 2014	GAMMA RAY
F1:ISS	Jun 30 15:00:50 2014	INELASTIC SHORT SPACE COUNT RATE
F1:LS	Jun 30 15:00:50 2014	LONG SPACE COUNT RATE
F1:RATO	Jun 30 15:00:50 2014	SHORT/LONG SPACE COUNT RATE RATIO
F1:RICS	Jun 30 15:00:50 2014	SHORT SPACE INELASTIC TO CAPTURE COUNT RATE RATIO (ISS/CSS)
F1:SGFC	Jun 30 15:00:50 2014	CORRECTED FORMATION SIGMA
F1:SS	Jun 30 15:00:50 2014	SHORT SPACE COUNT RATE

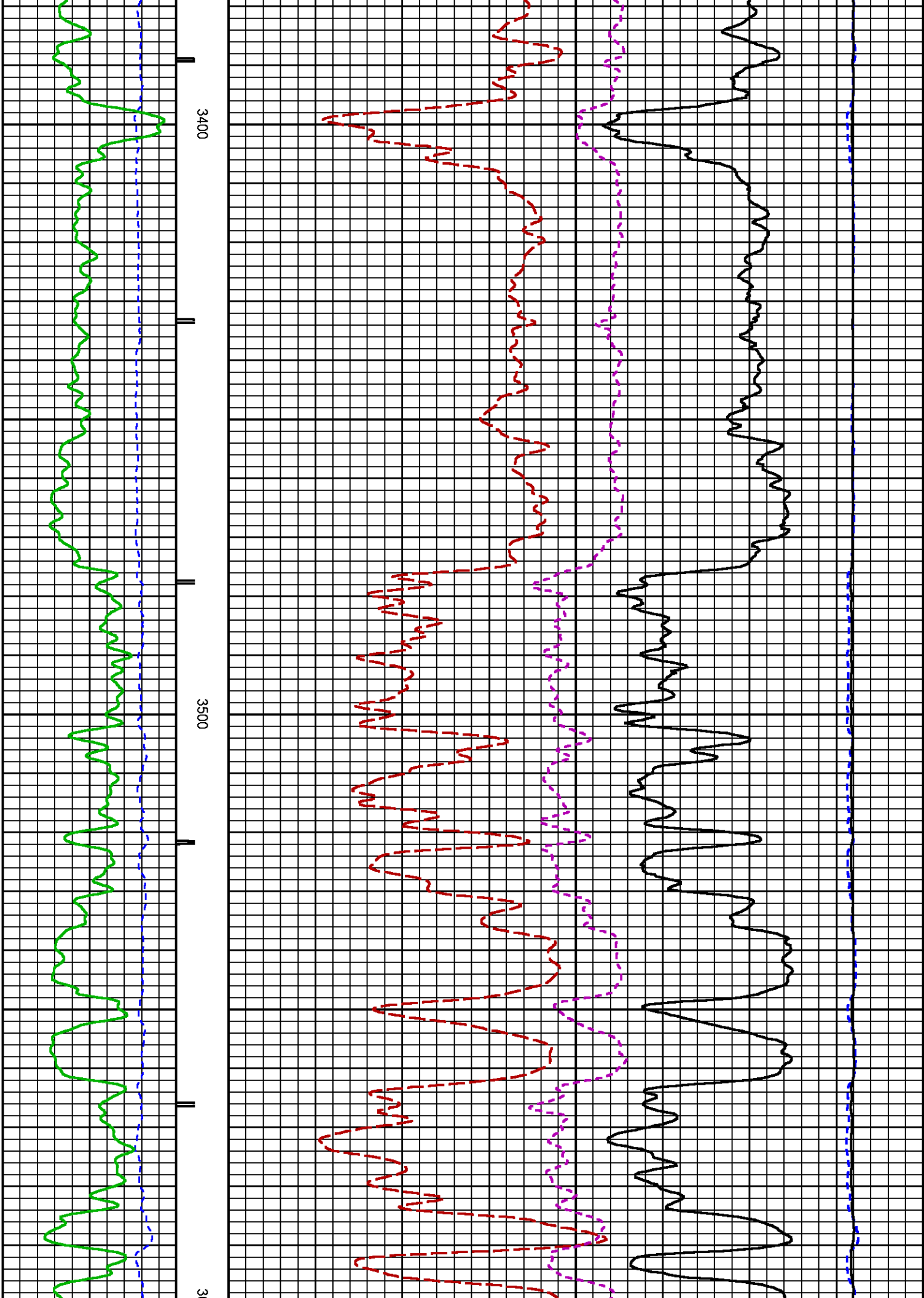
## CURVE MEASURE POINT OFFSET

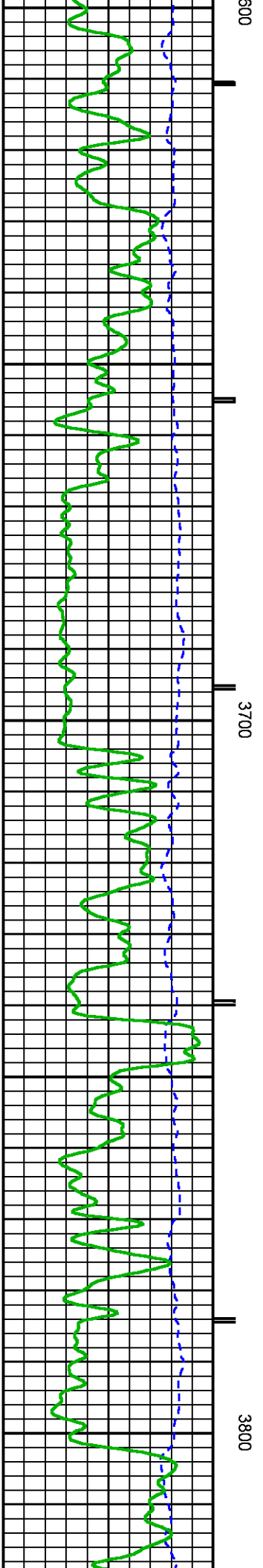
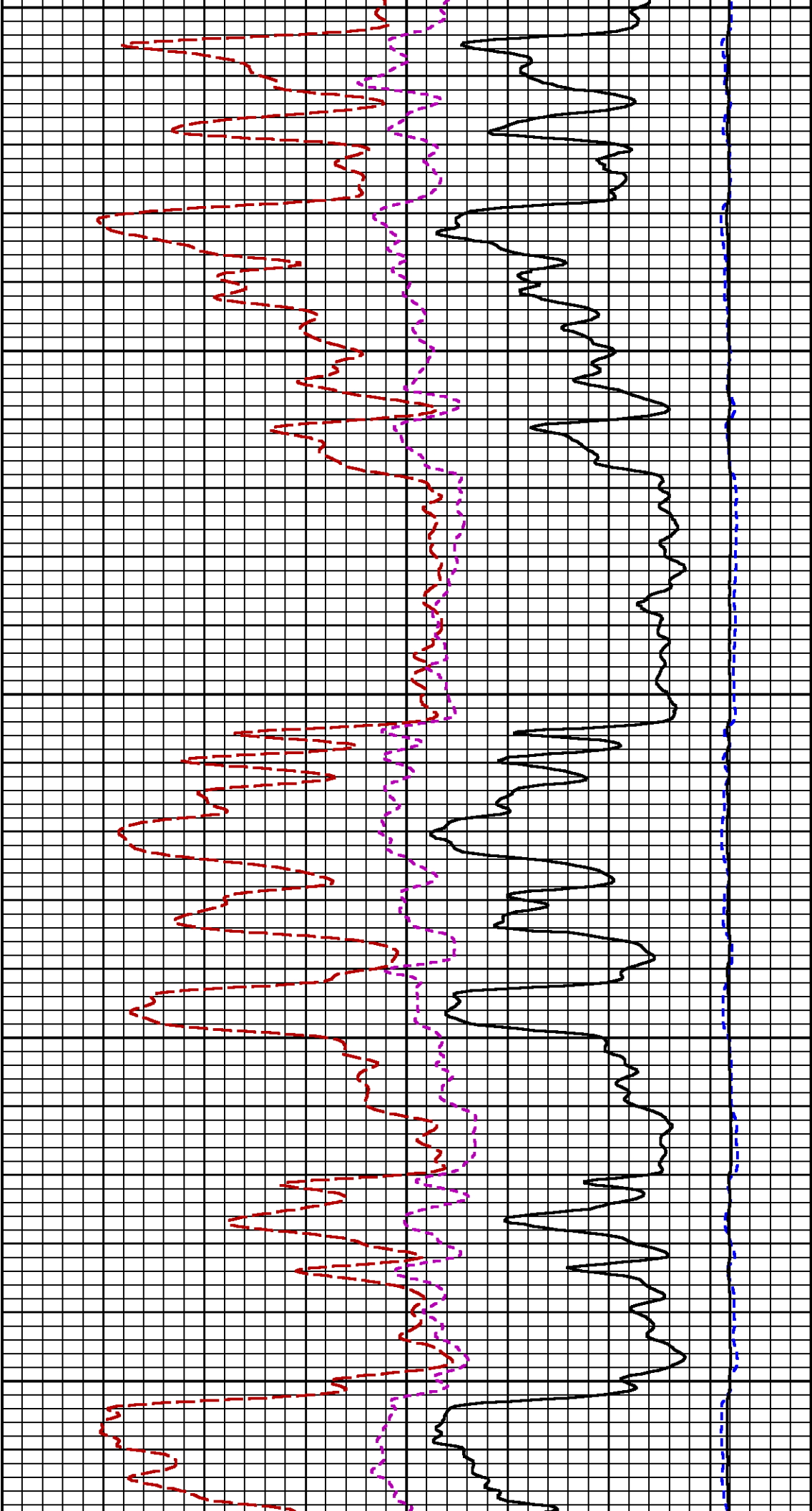
CURVE	OFFSET (ft)	CURVE	OFFSET (ft)	CURVE	OFFSET (ft)	CURVE	OFFSET (ft)
CCL	25.00	ISS	12.75	RATO	12.75	SGFC	12.75
GR	22.75	LS	12.75	RICS	12.75	SS	12.75

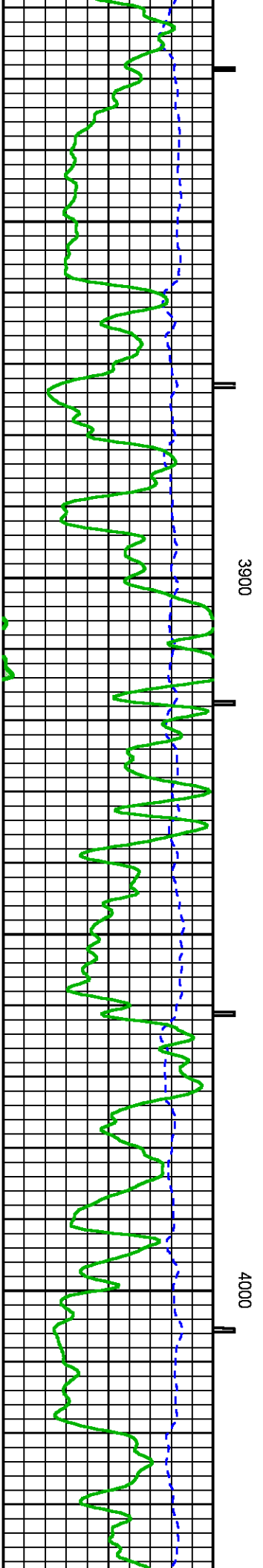
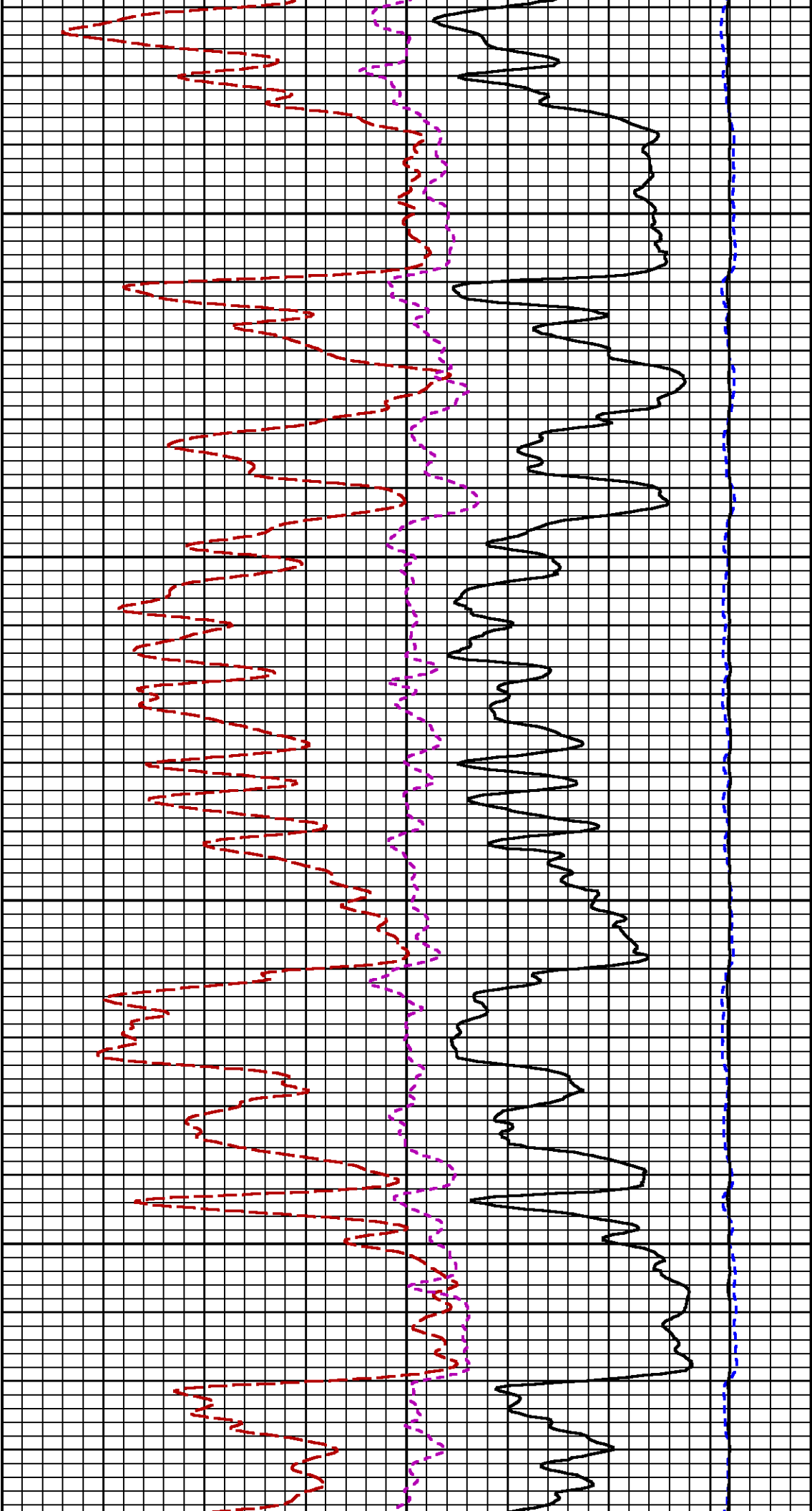
Presentation : HL6670:WPX\_rpm\_pnc3D\_MAIN.fvpdf [5"/100' Scale]  
Plot Interval : 3250 - 6322 Feet

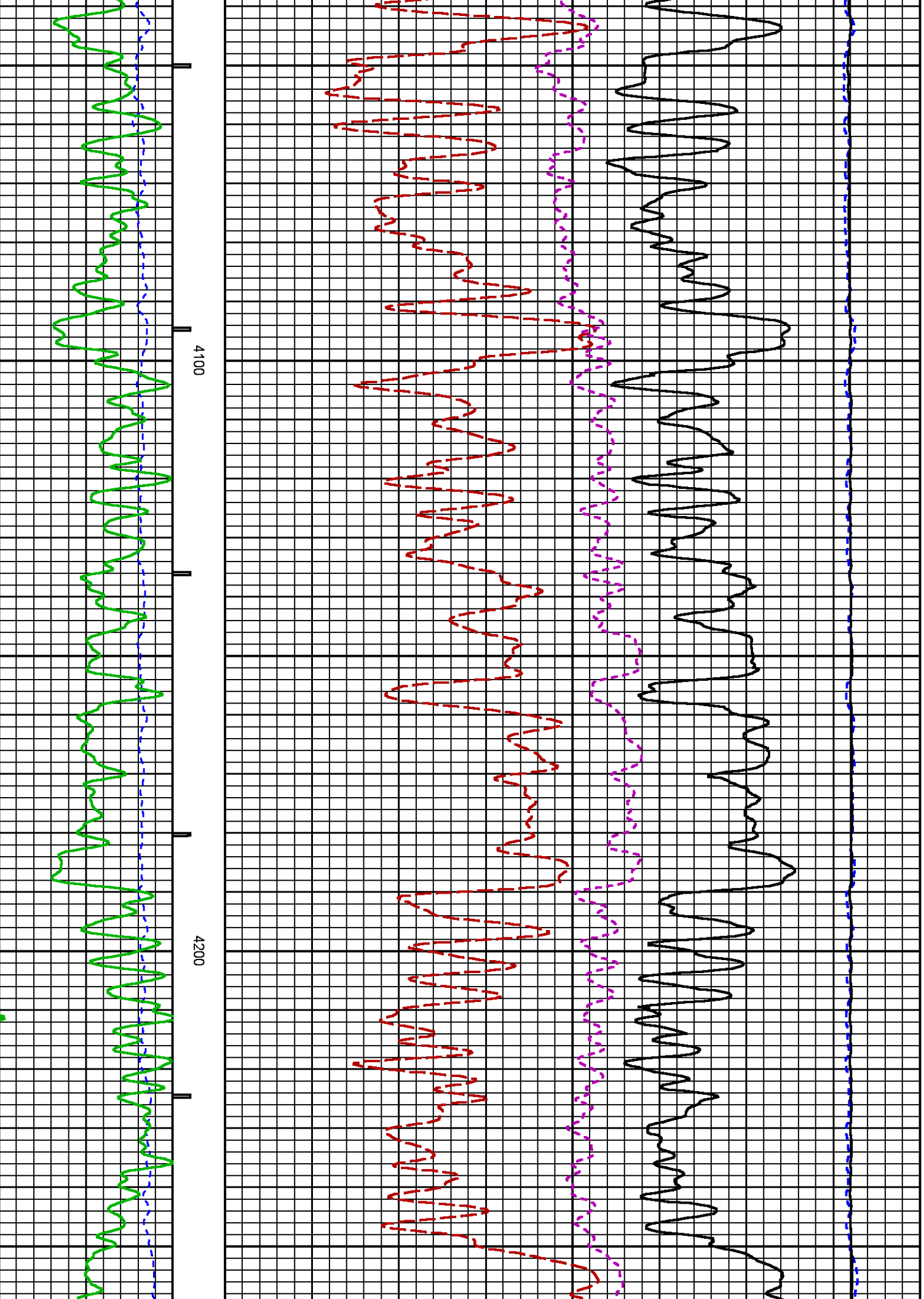
Data File 1 : F1 : HL6670:/dat1a/CH087278/MAIN\_RPM.xtf  
Created On : Jun 30 15:00:50 2014  
Company : WPX ENERGY  
Well : C&C ENERGY GM 521-13  
Field : GRAND VALLEY  
File Interval : 24 - 6322 Feet  
OCT : n354h

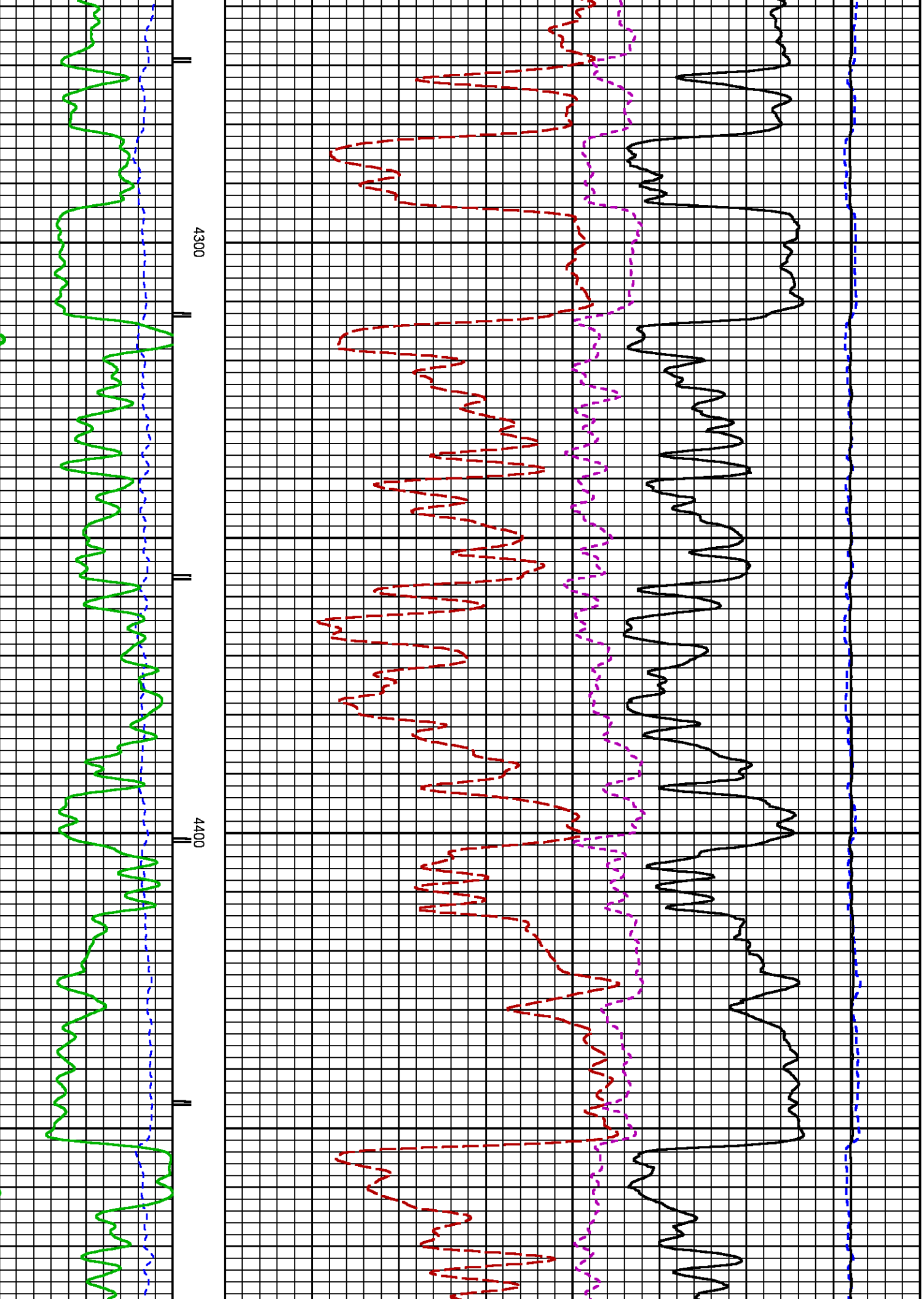




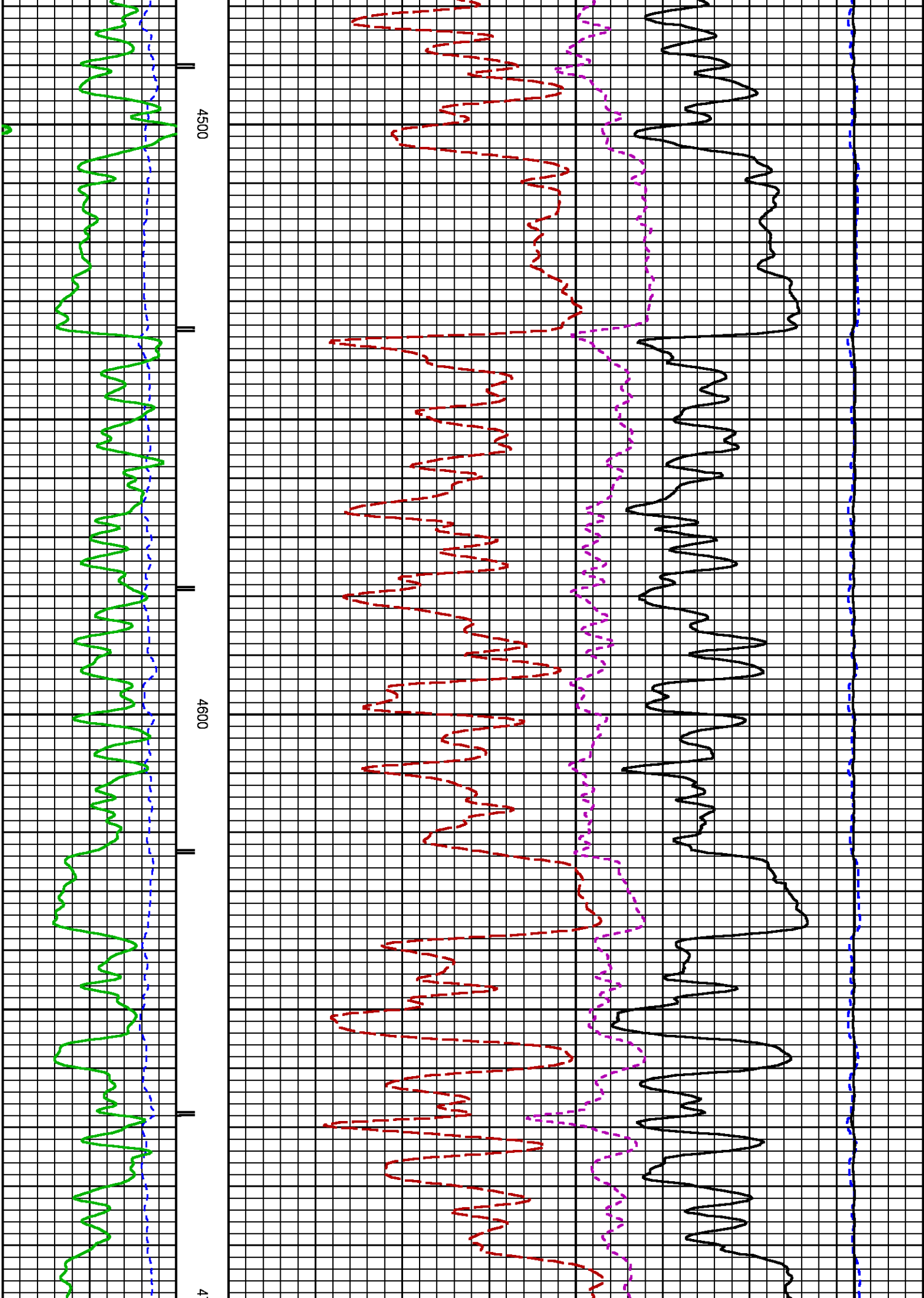


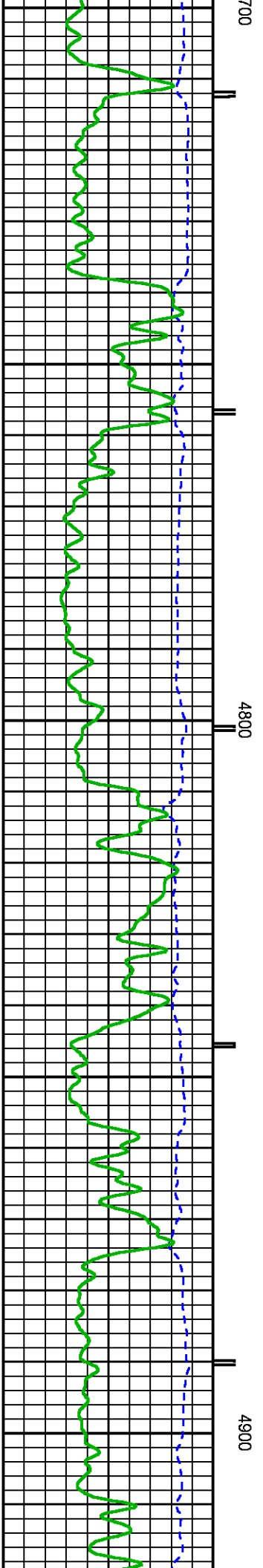
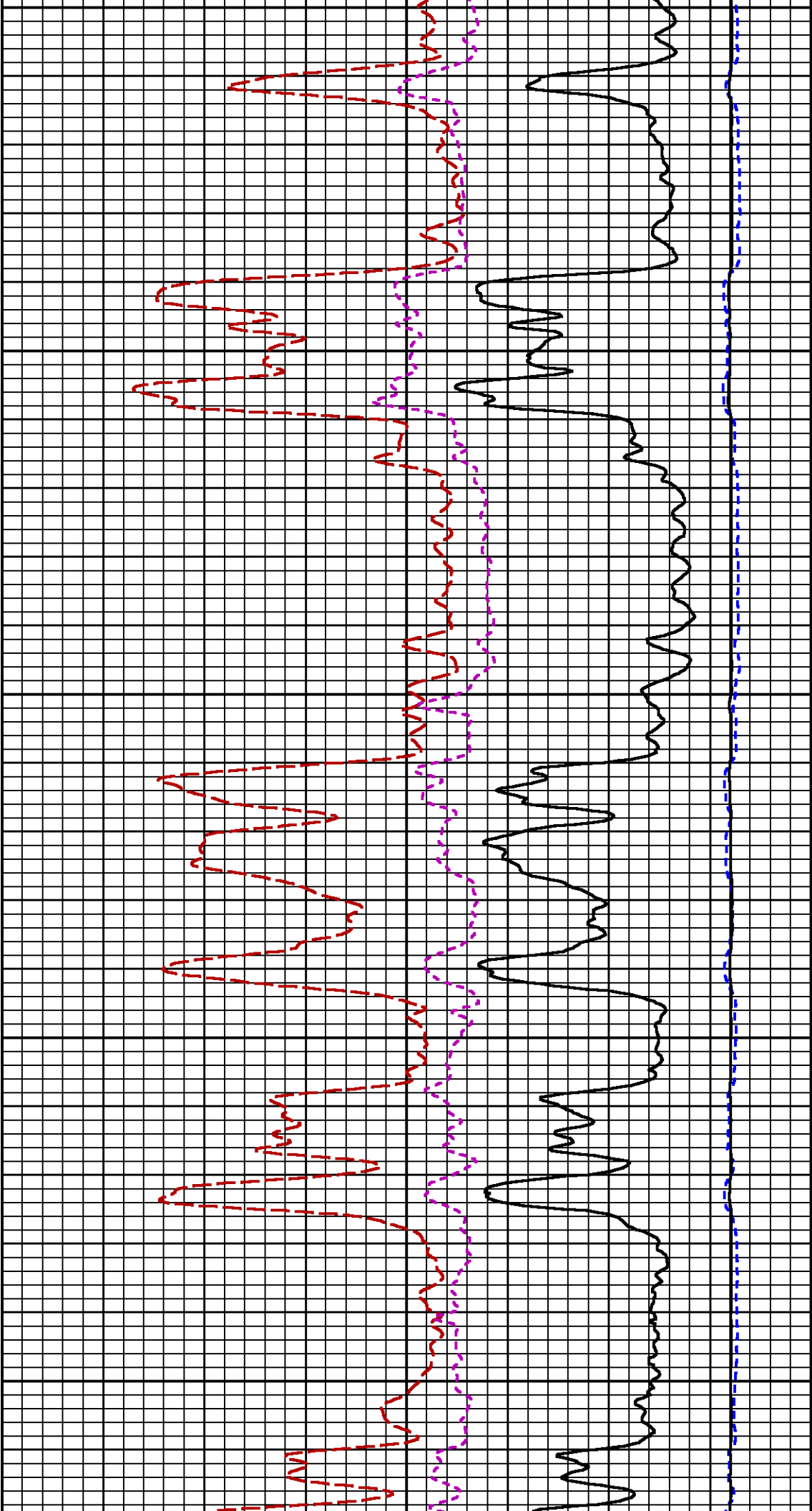


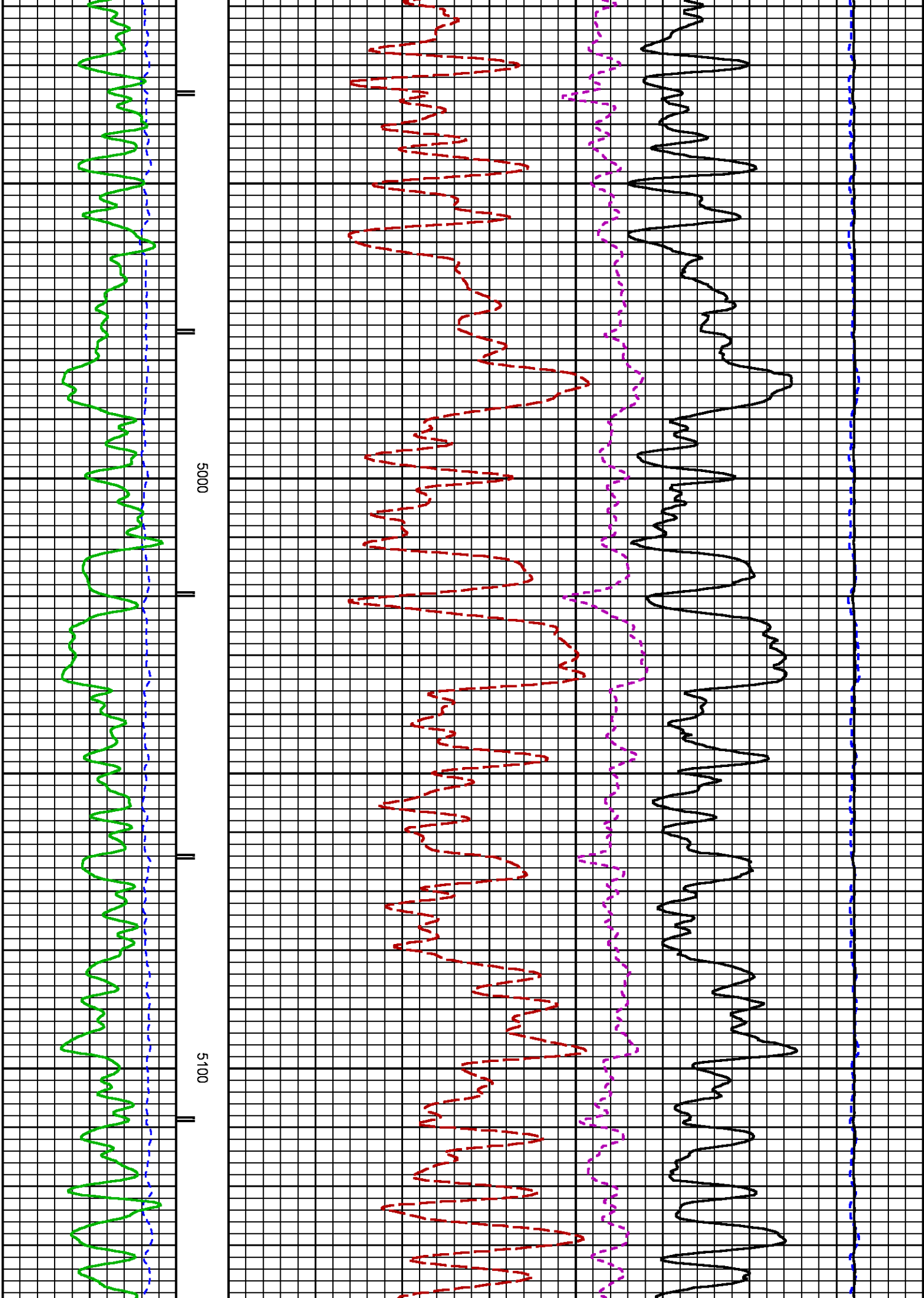


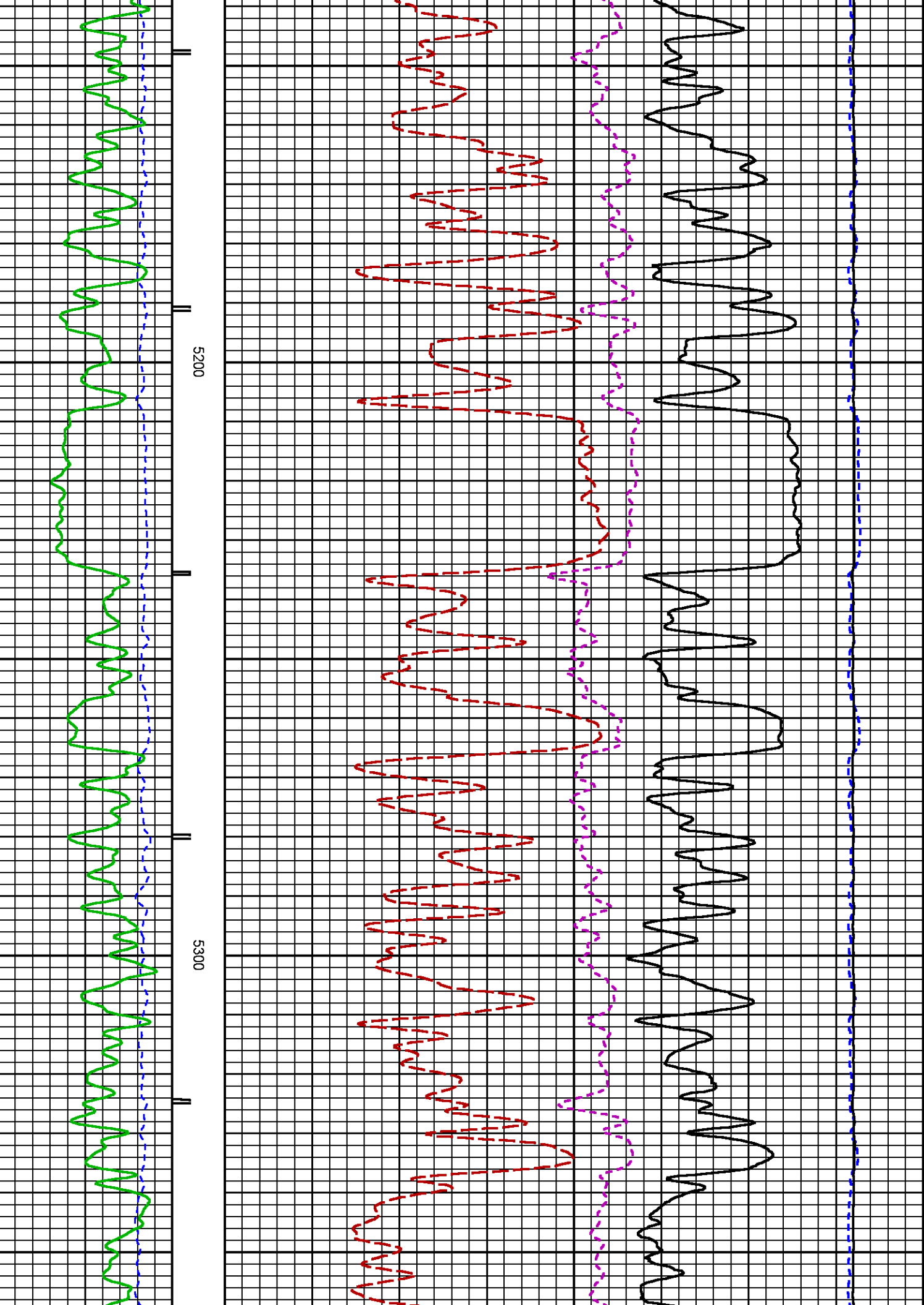


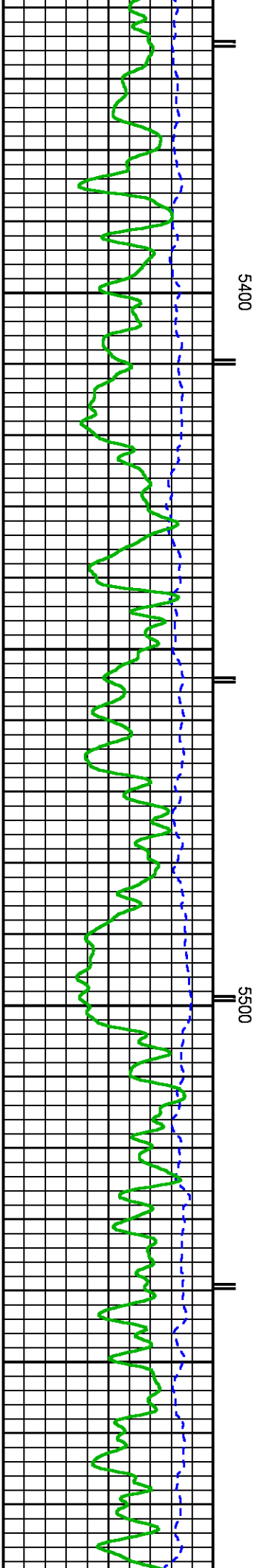
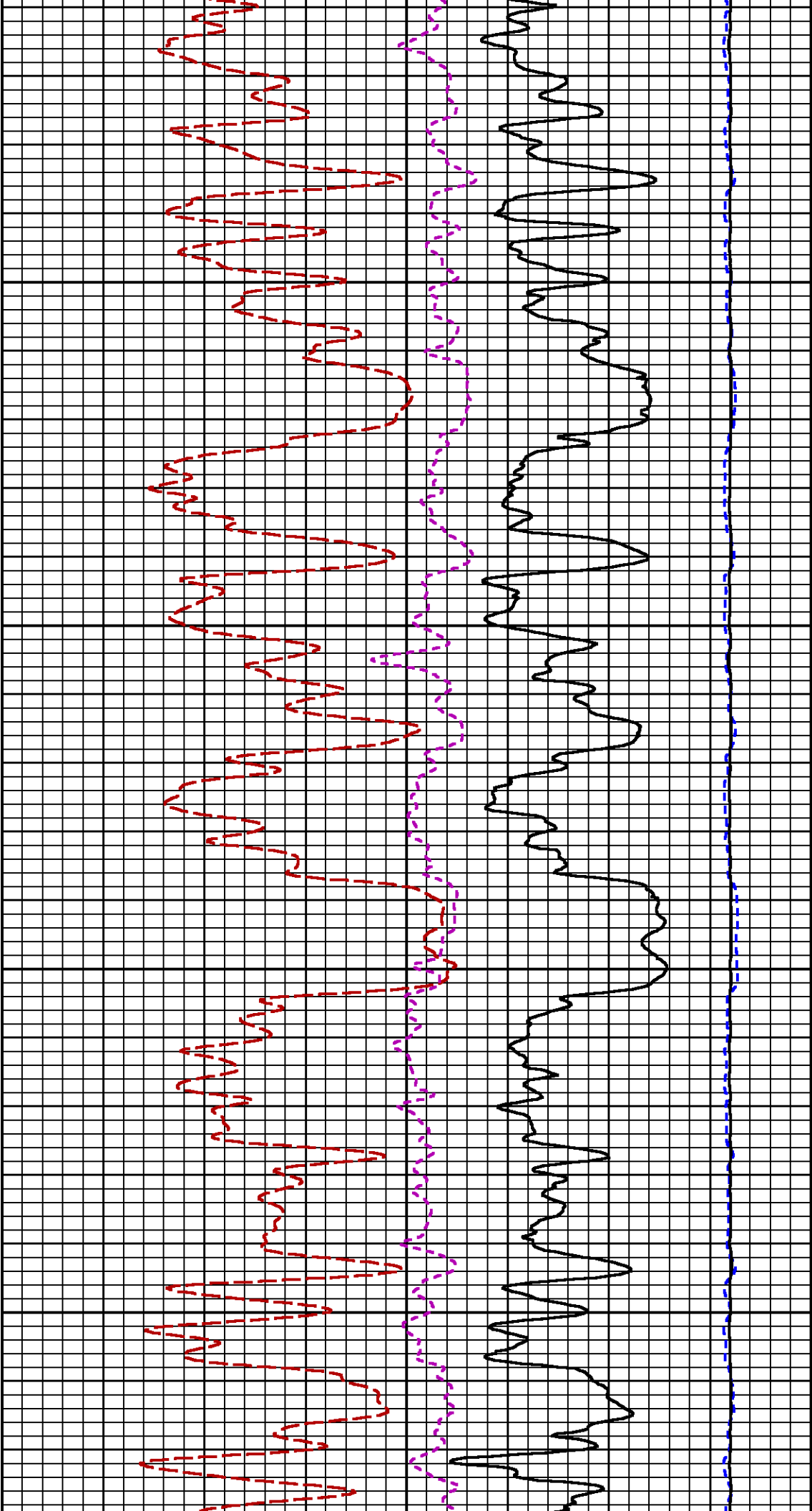


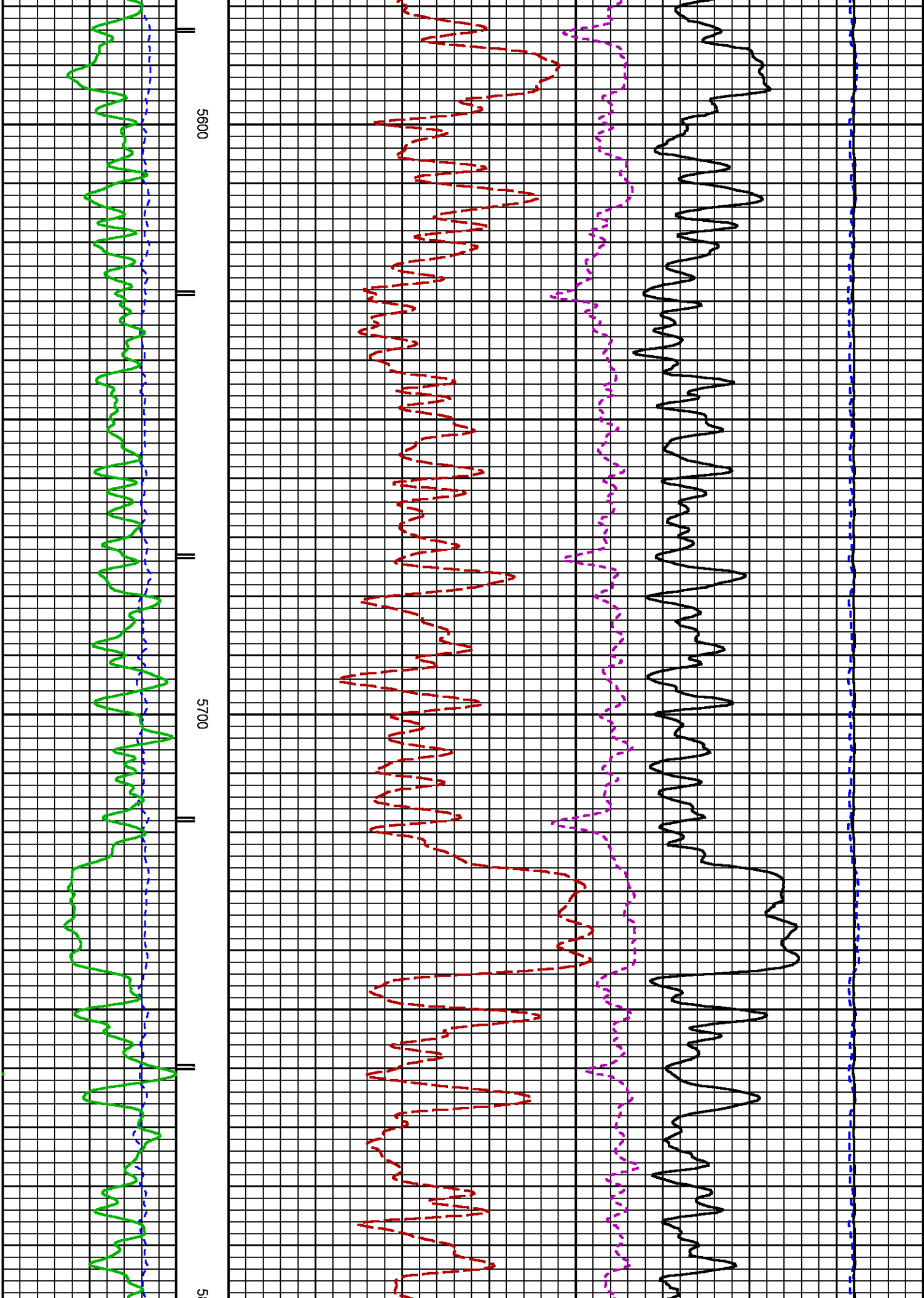


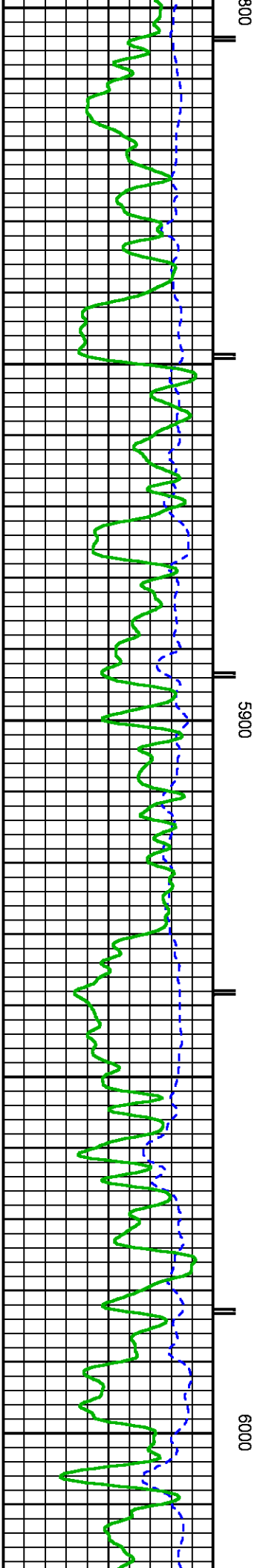
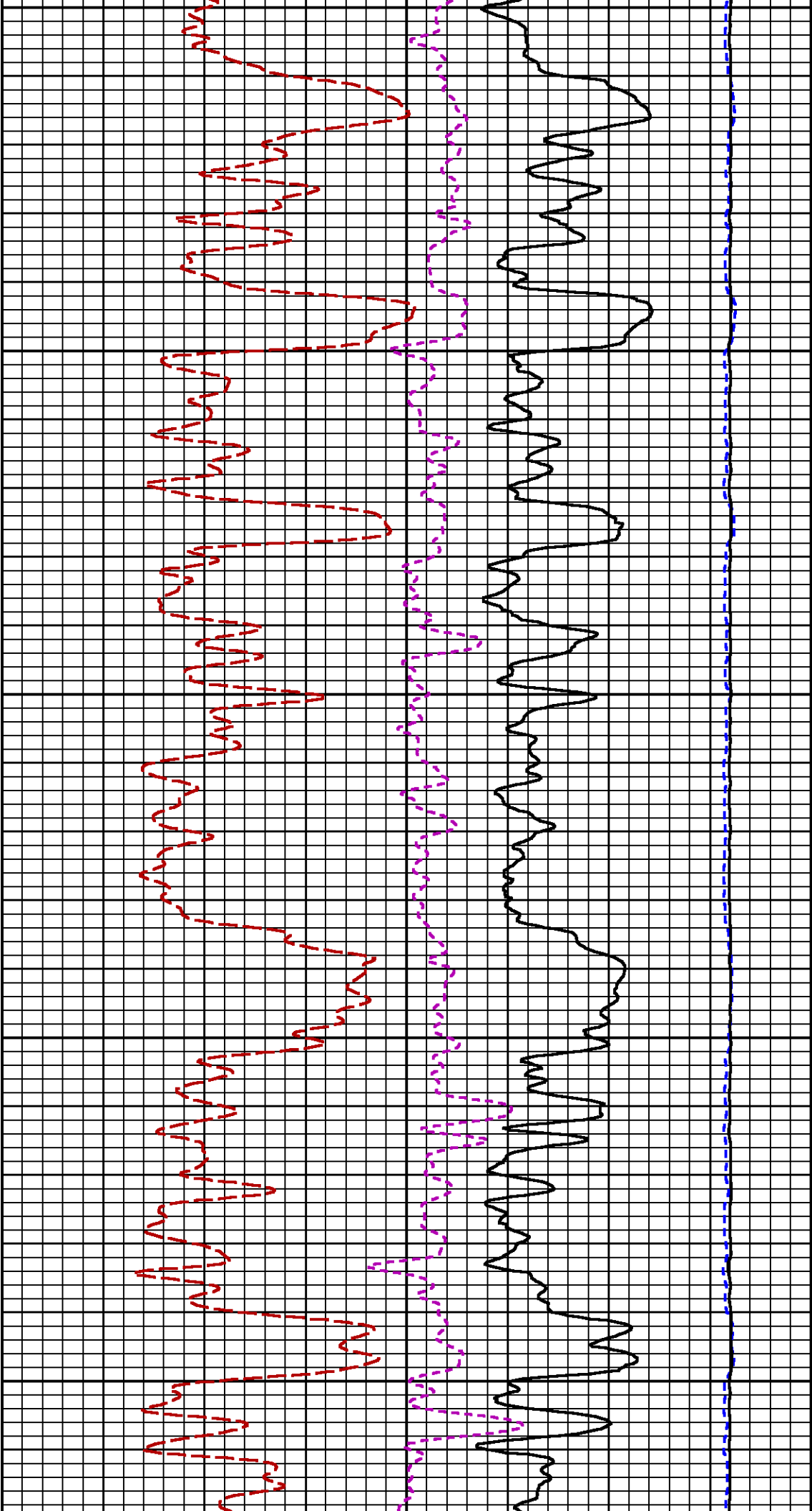


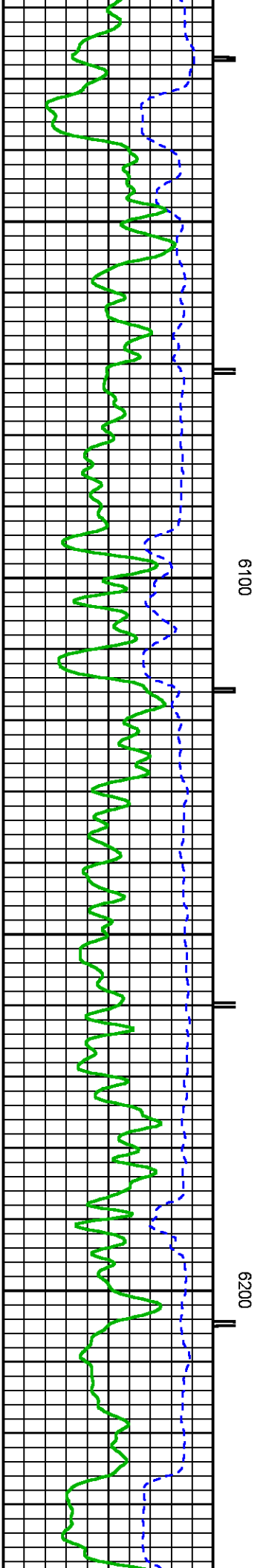
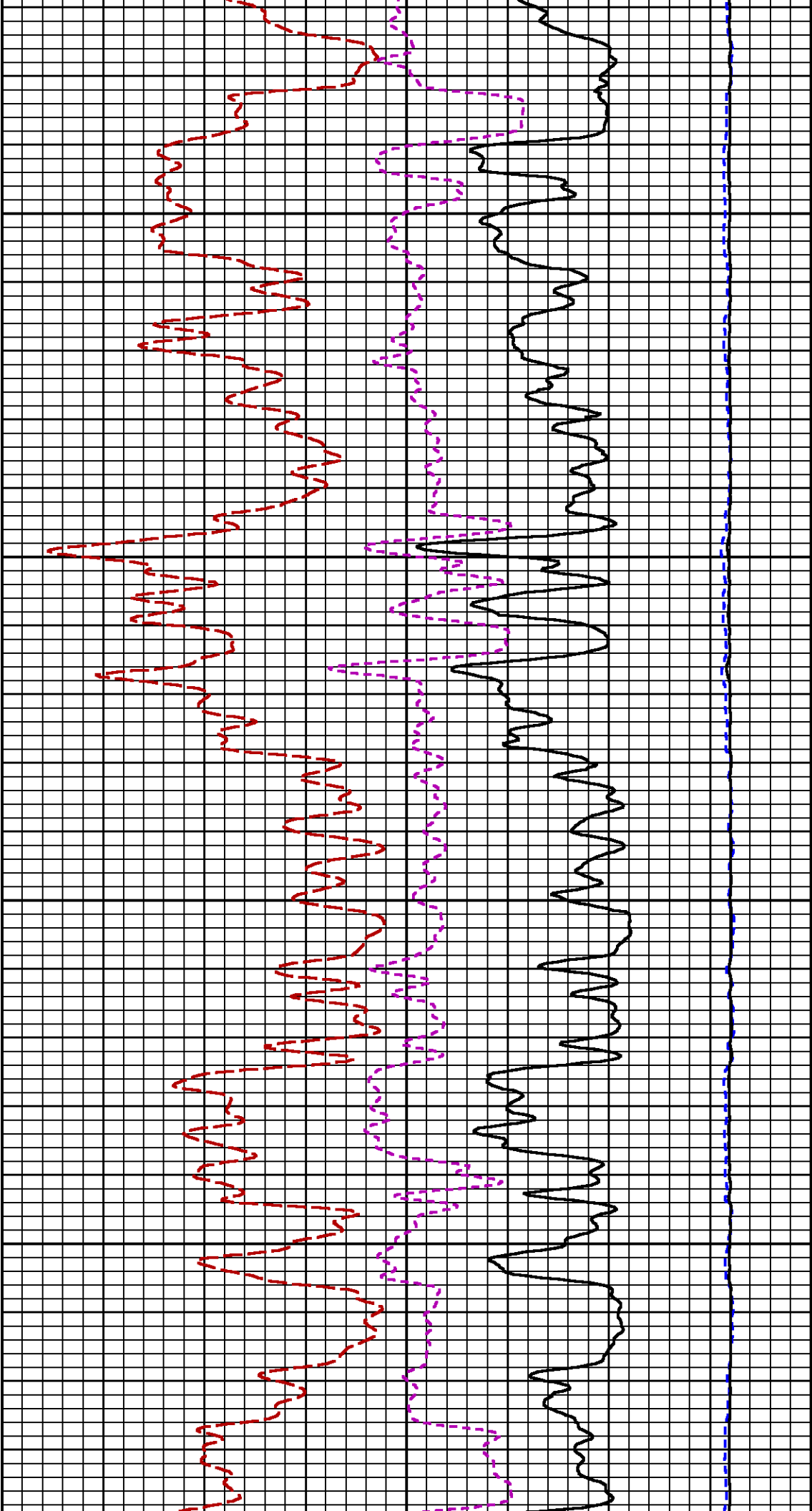




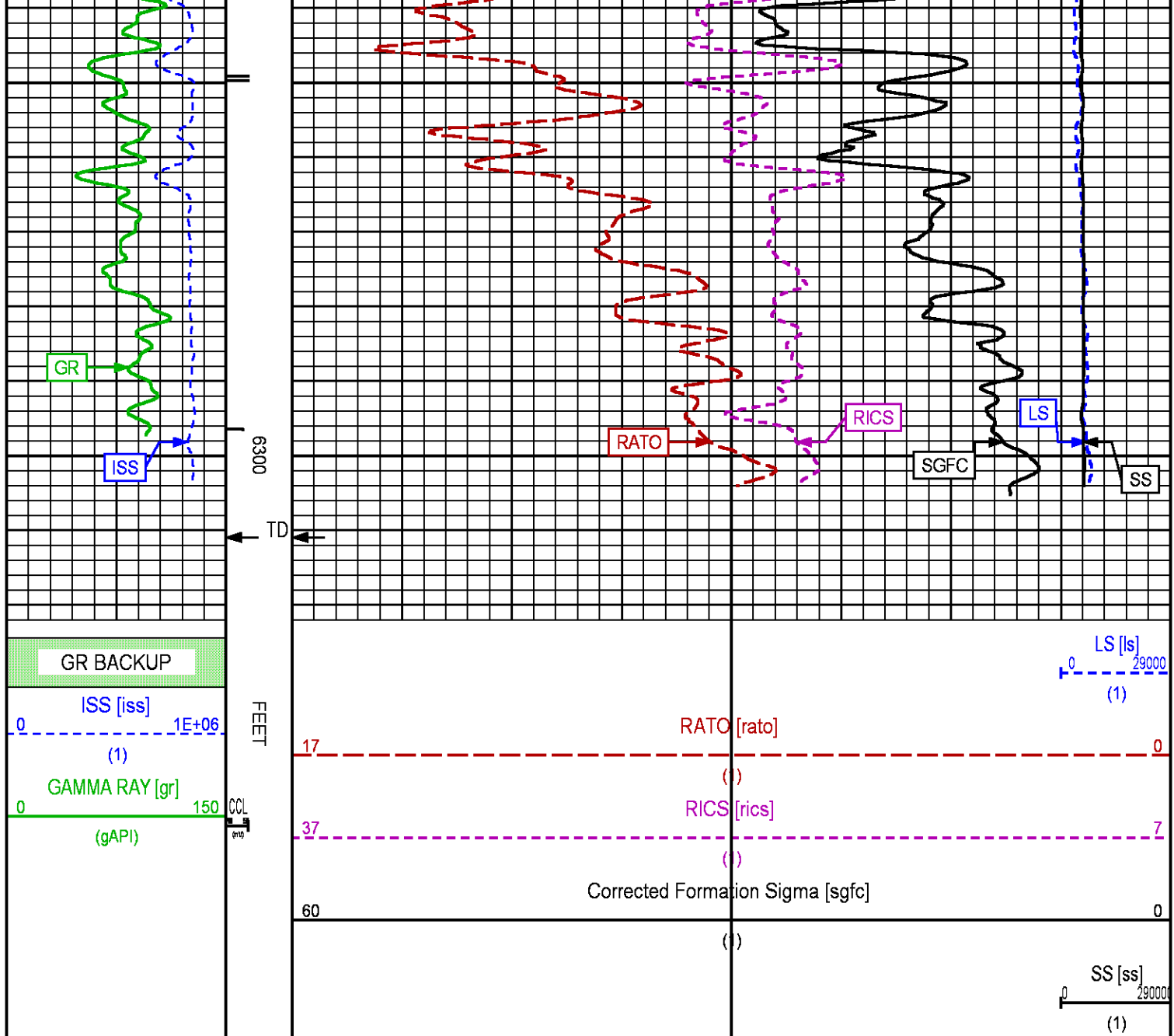












REPEAT LOG

ECLIPS 6.2i ECLIPS General Release Rel 6.2i Wed Jun 12 12:21:40 CDT 2013

Updates: 1

Plotted: Mon Jun 30 15:17:32 2014

### PARAMETER AND FILTER SUMMARY REPORT

FILE: /dat1a/CH087278/n354hR01.prm  
LOGGING MODE: DEPTH DIRECTION: UP  
TOP DEPTH: 5395.000 ft BOTTOM DEPTH: 5846.500 ft

### SYMMETRIC FILTER

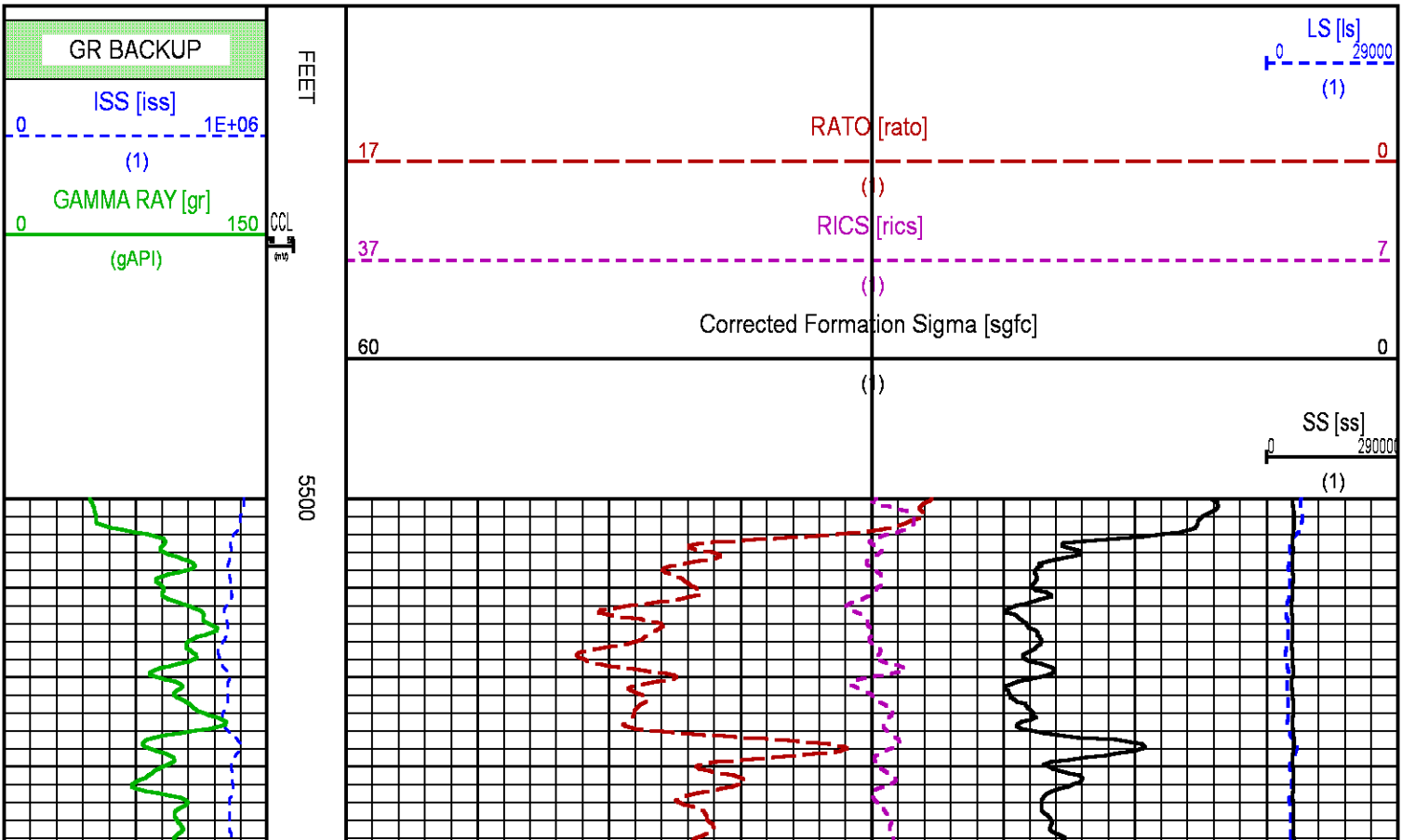
MEASUREMENT TYPE	PARAMETER	VALUE	UNITS	INTERVAL (ft)
------------------	-----------	-------	-------	---------------

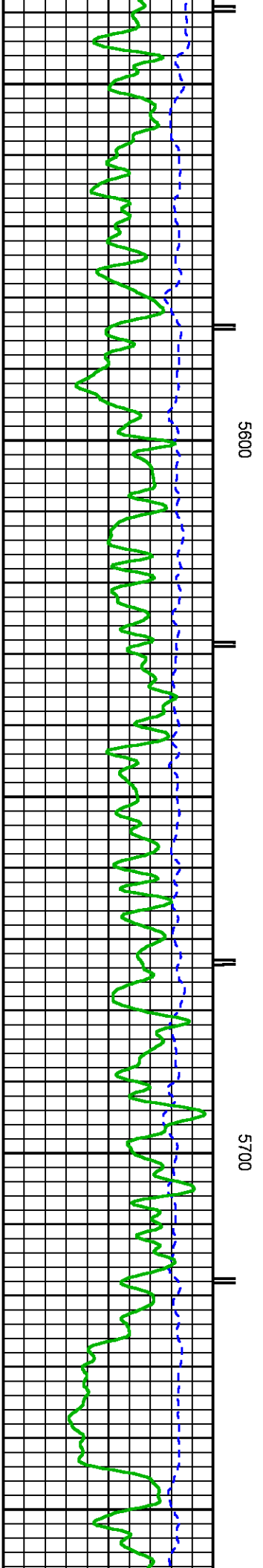
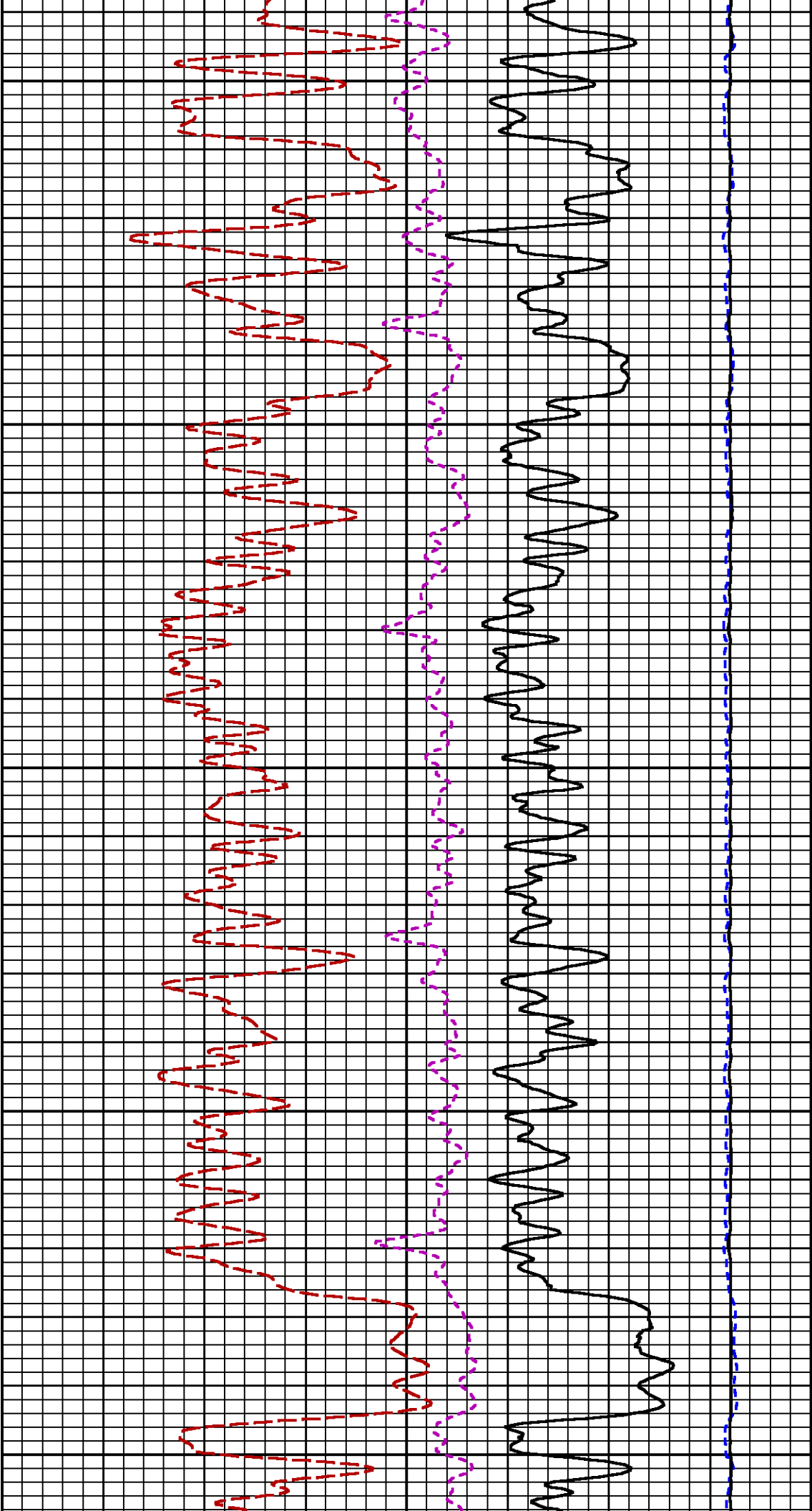
GR	FILTER ()	medium (1)	TOP	BOTTOM
RPM PROCESSING				
MEASUREMENT TYPE	PARAMETER	VALUE	UNITS	INTERVAL (ft)
PNC Parameters	BOREHOLE CONTENTS	FLUID		TOP
	OPEN/CASED HOLE	CASED HOLE		BOTTOM
	BOREHOLE SIZE	8.75	in	"
	CASING SIZE	4.50	in	"
	MATRIX	SANDSTONE		"
	CORRECTION BUFFER	11		"

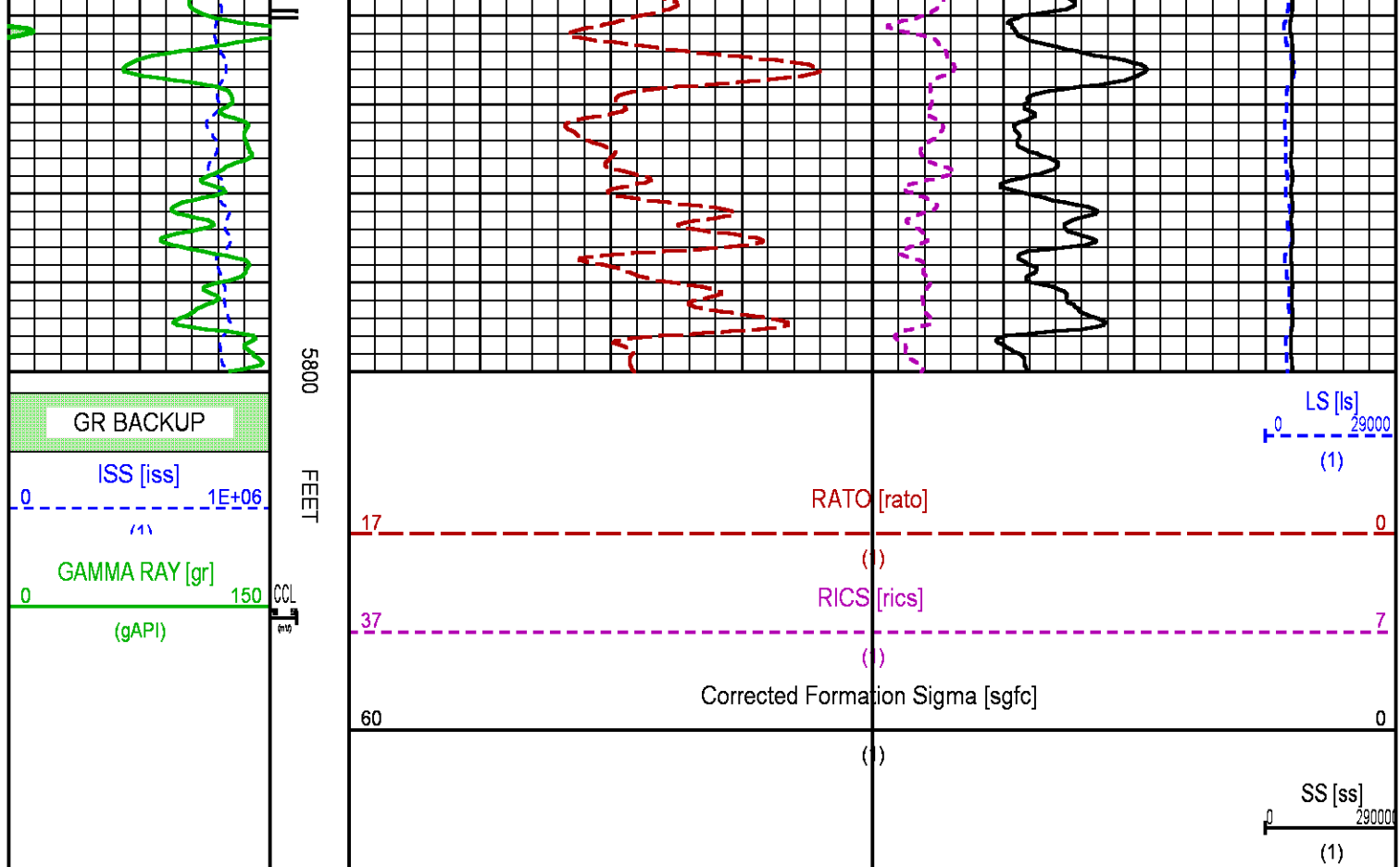
CURVE DESCRIPTION REPORT		
CURVE NAME	CREATION DATE	CURVE DESCRIPTION
F1:CCL	Jun 30 14:59:46 2014	CASING COLLAR LOCATOR
F1:GR	Jun 30 14:59:46 2014	GAMMA RAY
F1:ISS	Jun 30 14:59:46 2014	INELASTIC SHORT SPACE COUNT RATE
F1:LS	Jun 30 14:59:46 2014	LONG SPACE COUNT RATE
F1:RATO	Jun 30 14:59:46 2014	SHORT/LONG SPACE COUNT RATE RATIO
F1:RICS	Jun 30 14:59:46 2014	SHORT SPACE INELASTIC TO CAPTURE COUNT RATE RATIO (ISS/CSS)
F1:SGFC	Jun 30 14:59:46 2014	CORRECTED FORMATION SIGMA
F1:SS	Jun 30 14:59:46 2014	SHORT SPACE COUNT RATE

CURVE MEASURE POINT OFFSET							
CURVE	OFFSET (ft)	CURVE	OFFSET (ft)	CURVE	OFFSET (ft)	CURVE	OFFSET (ft)
CCL	25.00	ISS	12.75	RATO	12.75	SGFC	12.75
GR	22.75	LS	12.75	RICS	12.75	SS	12.75

Presentation	: HL6670:WPX_rpm_pnc3D_REPEAT.fvpdf [5"/100' Scale]
Plot Interval	: 5500 - 5800 Feet
Data File 1	: F1 : HL6670:/dat1a/CH087278/REPEAT_RPM.xtf
Created On	: Jun 30 14:59:46 2014
Company	: WPX ENERGY
Well	: C&C ENERGY GM 521-13
Field	: GRAND VALLEY
File Interval	: 2962.75 - 6296.5 Feet
OCT	: n354h







## CALIBRATION / VERIFICATION SUMMARY

Source File: /dat1a/CH087278/RPM\_CAL.tp1

### GR PRIMARY CALIBRATION SUMMARY

TOOL #: 2812LA 11701636

DATE/TIME PERFORMED: Sat Jun 7 13:49:20 2014

UNIT #: 3880TA HL6670

CALB JIG #: 4702NK DA-041

	BACKGROUND CALBRTR ON (cts/s)	CR DIFF (cts/s)	MULT	BACKGROUND CALBRTR ON (gAPI)	CALBRTR (gAPI)
GR	64.73	269.38	1.026	66.43	276.43

### GR PRIMARY VERIFICATION SUMMARY

TOOL #: 2812LA 11701636

DATE/TIME PERFORMED: Sat Jun 7 13:51:47 2014

UNIT #: 3880TA HL6670

VERI JIG #: 4702NK DA-041

	BACKGROUND CALBRTR ON (cts/s)	DIFF. (gAPI)
GR	62.22	212.55

### RPM\_PNC\_3D PRIMARY CALIBRATION SUMMARY

TOOL: 8283PA 10466231

DATE/TIME PERFORMED: Sat Jun 7 13:46:01 2014

UNIT: 3880TA HL6670

CALIBRATOR: 243ZYB 112674

SOURCE: 8281AA 11724361

HOURS: 8281AA 150

UNIT: 3880TA HL6670 CALIBRATOR: 2437XB T12674 SOURCE: 8255XA T1724361 TROCKS: 8255XA T50

	ISS	Mtr Vltz (V)	SS Gain	LS Gain	XLS Gain	EA Temp (degF)	Sync Delay (usec)	RCAL
Raw Data	793110	120	2274	2285	2265	136	7	0.9713
Interpolated	1300000	142	2257	2280	2263			

	ISS	BKS	BKL	BKX	SGA1	SDA1	SGA2	SDA2
Raw Data	793110	6702	1051	147	26.05	0.15	24.16	0.33
					25.35 26.40	0.00 0.20	23.60 24.80	0.00 0.40

	ISS	ILS	IXS	SS	SS2	LS	CSS	CLS
Raw Data	793110	163084	25428	88862	31655	8202	53870	13116
Fit Quality %		1.050	1.105	1.067	1.070	1.105	1.011	1.080

	ISS	RBOR	RIN	RIN13	RICS	RATO	RTWO	RONE
			ISS/LS	ISS/XS	ISS/CSS	SS/LS	SS2/LS	CSS/CLS
Raw Data	793110	1.44	4.86	31.21	14.72	10.84	3.86	4.11
		1.42 1.45	3.55 5.52	22.20 32.70	10.99 16.34	10.06 11.10	3.57 3.95	3.76 4.22
Fit Quality %		0.032	0.127	0.067	0.089	0.111	0.100	0.071
Reduced	1399095	1.43	4.86	31.17	14.69	10.86	3.87	4.11
		1.42 1.45	4.33 5.52	27.60 32.70	13.70 16.34	10.06 11.10	3.57 3.95	3.76 4.22

## TPSETEMP PRIMARY CALIBRATION SUMMARY

TOOL #: 8255XA 166341

DATE/TIME PERFORMED: Sat Jun 28 11:12:23 2014

UNIT #: 3880TA HL6670

	T(0)	T(1)	T(2)	T(3)
Corr Coeff for Temp	1.112722E-05	-6.595931E-12	3.011507E-19	-2.270919E-26

## INSTRUMENT CONFIGURATION

Source File: /dat1a/CH087278/RPM\_TEMP.tdg

A3 CABLEHEAD  
Diameter : 1.37"

PCM POWER SUPPLY  
Diameter : 1.70"  
Length : 3.86'  
Weight : 18 lbs  
Series : 8250EA  
Mnemonic : PCM

TELEMETRY / CCL  
Diameter : 1.70"  
Length : 4.46'  
Weight : 20 lbs  
Series : 8248ED  
Mnemonic : PCM  
Measure Point: 1.00': CCL MP

SONDEX GAMMA RAY  
Diameter : 1.69"  
Length : 2.17'  
Weight : 10 lbs  
Series : 2812LA  
Mnemonic : GR  
Measure Point: 0.62': GR MP

33.24'

CCL MP 25.19'

GR MP 22.64'

Measure Point: 0.02' : GR 11

RPM ELECTRONICS

Diameter : 1.70"  
Length : 4.48'  
Weight : 16 lbs  
Series : 8281EA  
Mnemonic : RPM

RPM C DETECTOR SECTION

Diameter : 1.70"  
Length : 9.40'  
Weight : 41 lbs  
Series : 8283PA  
Mnemonic : RPM  
Measure Point: 5.45': XLS DETECTOR  
Measure Point: 5.04': LS DETECTOR  
Measure Point: 4.79': SS DETECTOR

XLS DETECTOR 13.58'  
LS DETECTOR 13.16'  
SS DETECTOR 12.91'

RPM SOURCE SECTION

Diameter : 1.70"  
Length : 4.70'  
Weight : 18 lbs  
Series : 8281FA  
Mnemonic : RPM

TEMPERATURE / PRESSURE

Diameter : 1.70"  
Length : 3.30'  
Weight : 13 lbs  
Series : 8255XA  
Mnemonic : SRPL  
Measure Point: 1.52': TEMP MP

TEMP MP 1.65'  
PRES MP

BULL PLUG 1 11/16

TOTAL LENGTH: 33.24'  
TOTAL WEIGHT: 140 lbs  
MAX DIAMETER: 0'1.70'

0.00'



COMPANY	WPX ENERGY INC		FILE NO:
WELL	C & C ENERGY GM 521-13		CH087278
FIELD	GRAND VALLEY		API NO:
COUNTY	GARFIELD	STATE CO	05045222580000
LOCATION:	ELEVATIONS:	S13 T7S R96W	
SHL: 274' FSL 1008' FWL S12 T7S R96W	KB 5165 FT	PAD: GM 24-12	
BHL: 1054' FNL 2074' FWL S13 T7S R96W	DF	RIG: H & P 318	
	GL 5141 FT		
SEC 13	TWP 7S	RGE 96W	DATE 29-Jun-2014