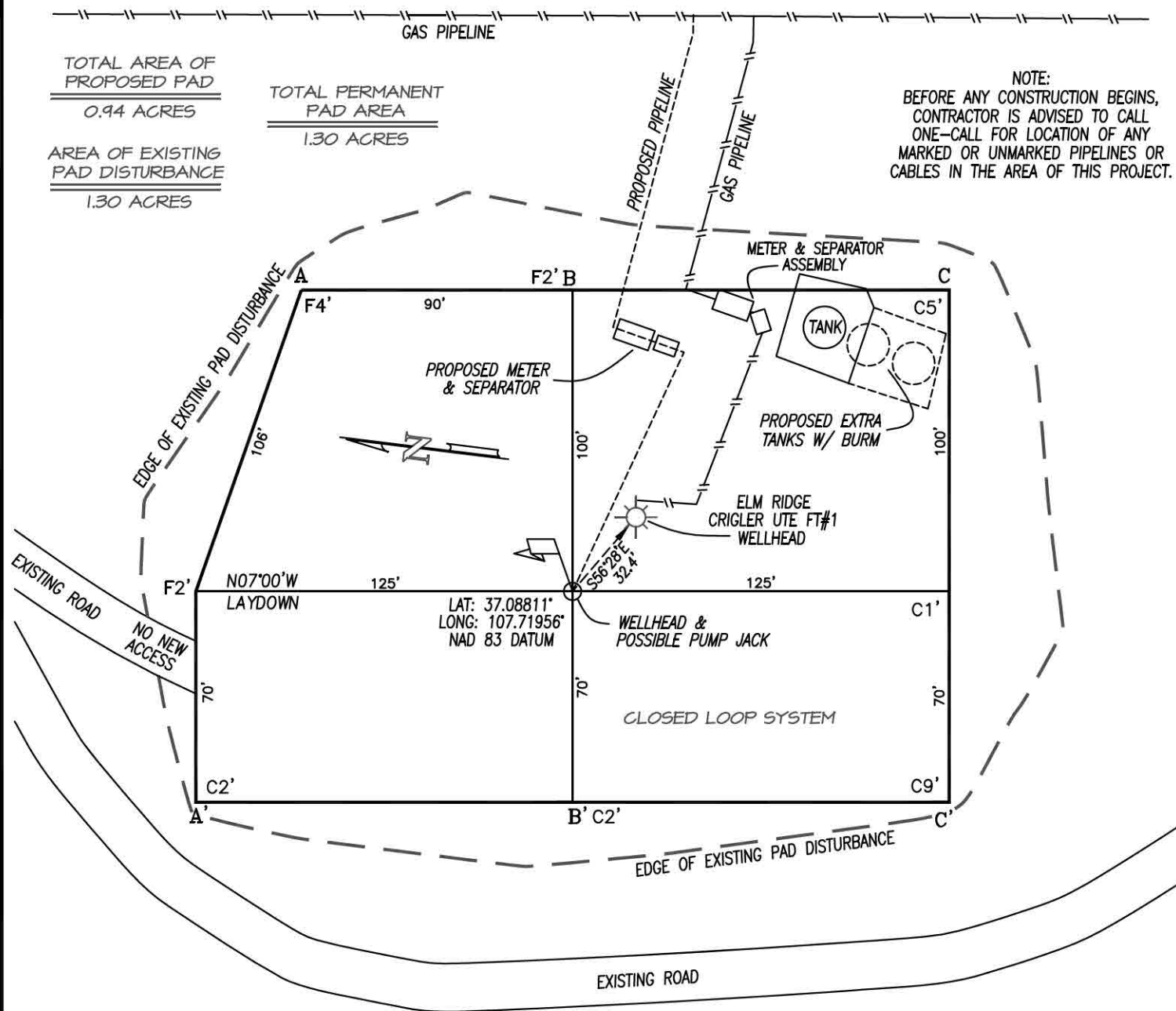


ELM RIDGE EXPLORATION COMPANY, LLC: IGS 146
2124' FSL, 1693' FEL, SECTION 21, T-33-N, R-8-W, N.M.P.M.,
LA PLATA COUNTY, CO. GROUND LEVEL ELEVATION: 6876'



A-A' ELEV.	C/L
6886	
6876	
6866	

B-B'	C/L
6886	
6876	
6866	

C-C'	C/L
6886	
6876	
6866	