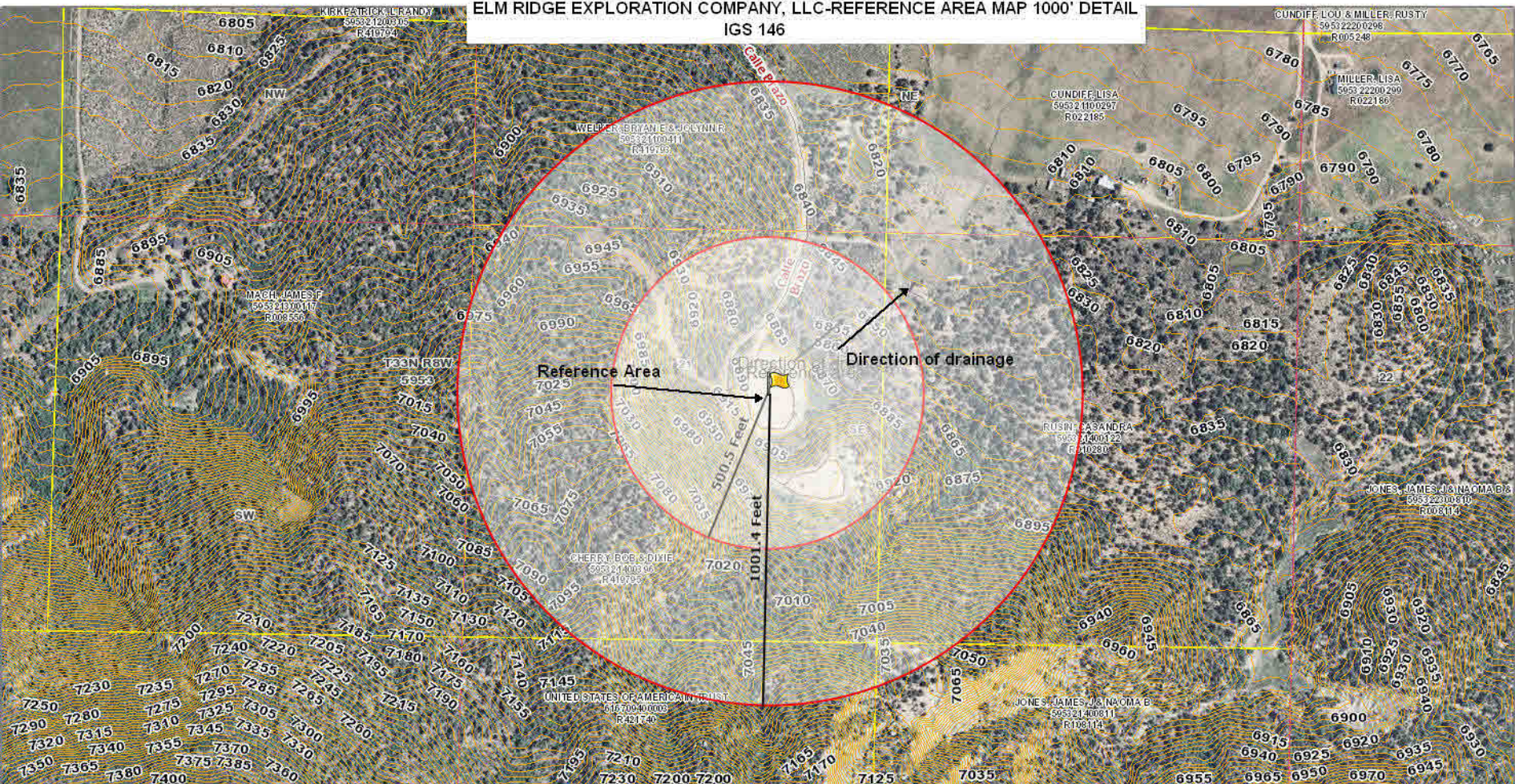


ELM RIDGE EXPLORATION COMPANY, LLC-REFERENCE AREA MAP 1000' DETAIL  
IGS 146



Disclaimer: The information is provided as is without warranty of any kind, either express or implied, including but not limited to the implied warranties of merchantability and fitness for a particular purpose. In no event shall La Plata County be liable for any damages whatsoever including direct, indirect, incidental, consequential, loss of business profits or special damages.

Map Scale  
1 inch = 315 feet  
7/23/2014