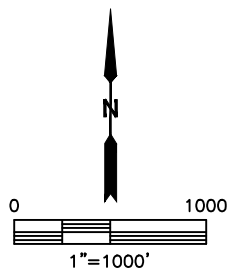
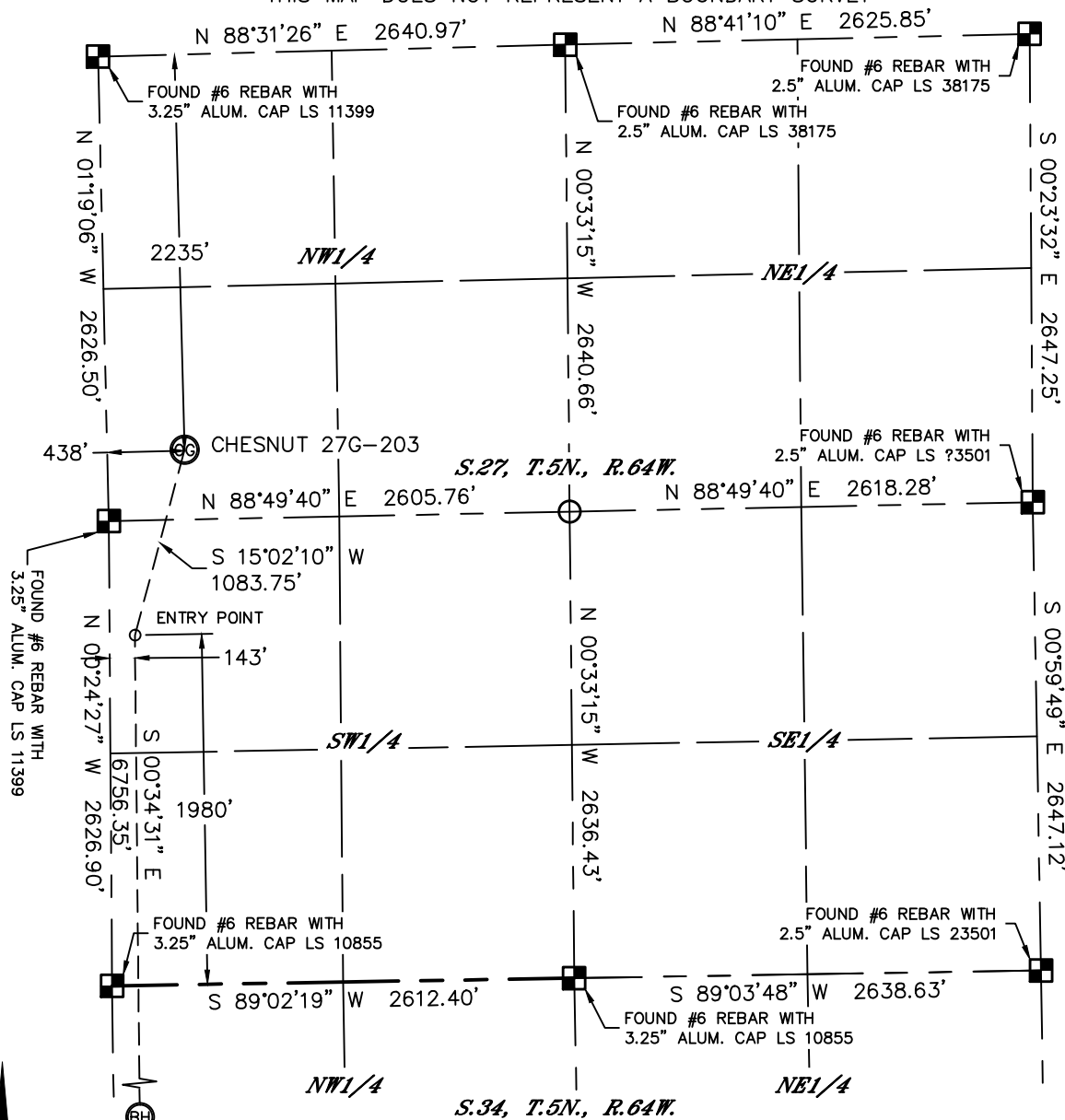


Lat40°, Inc. 1635 Foxtrail Drive, Suite 325 Loveland, CO 970-776-3321

WELL LOCATION CERTIFICATE

SECTION: 27
TOWNSHIP: 5N
RANGE: 64W



THIS MAP DOES NOT REPRESENT A BOUNDARY SURVEY



In accordance with a request from Jeff Dillingham with PDC ENERGY Lat40^o, Inc. has determined the surface location of the CHESNUT 27G-203 to be 2235' from the NORTH line and 438' from the WEST line as measured at right angles from the section lines of Section 27, Township 5 North, Range 64 West and the bottom hole to be 500' from the SOUTH line and 130' from the WEST line as measured at right angles from the section lines of Section 34, Township 5 North, Range 64 West of the Sixth Principal Meridian, County of Weld, State of Colorado.

I hereby state that this Well Location Certificate was prepared by me, or under my direct supervision, that the fieldwork was completed on 6/17/2014, for and on behalf of PDC ENERGY. That this is not a Land Survey Plat or an Improvement Survey Plat, and that it is not to be relied upon for establishment of fence, building, or other future improvement lines.

NOTE:

- 1) Bearings shown are Grid Bearings of the Colorado State Plane Coordinate System, North Zone, North American Datum 1983. The linear dimensions as contained herein are based upon the "U.S. Survey Foot."
- 2) Ground elevations are based on an observed GPS elevation (NAVD 1988 DATUM).
- 3) IMPROVEMENTS: See LOCATION DRAWING for all visible improvements within 500' of disturbed area.
- 4) SURFACE USE: RANGELAND
- 5) INSTRUMENT OPERATOR: BRIAN ROTTINGHAUS
- 6) NEAREST CULTURAL ITEMS:
- BUILDING ±521' N
BUILDING UNIT (VACANT) ±646' SW
HIGH OCCUPANCY BUILDING UNIT +5280'
DESIGNATED OUTSIDE ACTIVITY AREA +5280'
PUBLIC ROAD (CR 55) ±419' W
ABOVE GROUND UTILITY ±402' W
RAILROAD ±5016' N
PROPERTY LINE ±382' N
- LEGEND
-  = ALIQUOT MONUMENT
-  = CALCULATED POSITION

SURFACE LOCATION

LAT: 40.37133°N
LONG: 104.54360°W
PDOP: 2.3
ELEV: 4619'
1/4.1/4: SW1/4NW1/4



ENTRY POINT

LAT: 40.36847°N
LONG: 104.54465°W
1/4, 1/4: NW1/4SW1/4

BOTTOM HOLE

LAT: 40.34993°N
LONG: 104.54466°W
1/4, 1/4: SW1/4SW1/4

LEGEND

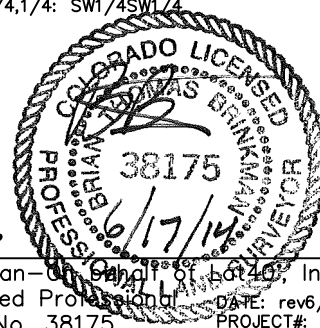
-  = ALIQUOT MONUMENT AS DESCRIBED
 = CALCULATED POSITION

SHEET 1 OF 2

Brian T. Brinkman - Chairman of Lat40, Inc.

Colorado Licensed Professional Land Surveyor No. 38175 DATE: rev6/17/2014 PROJECT#: 2014004

DATE: rev6/17/2014
PROJECT#: 2014004



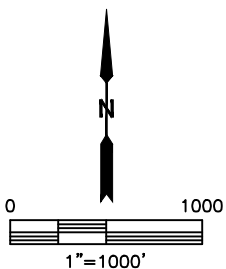
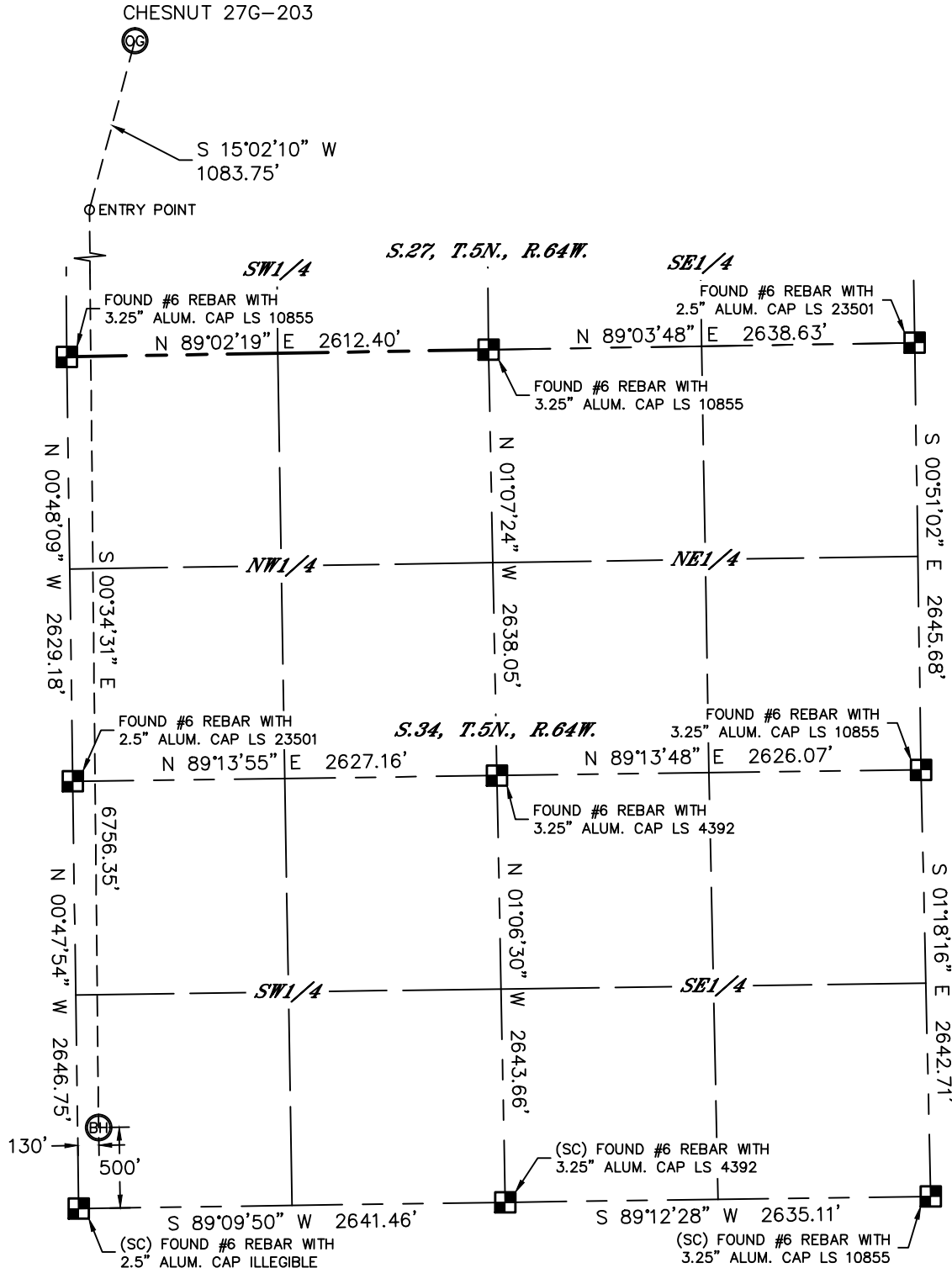


Lat40°, Inc. 1635 Foxtrail Drive, Suite 325 Loveland, CO 970-776-3321

WELL LOCATION CERTIFICATE

SECTION: 27
TOWNSHIP: 5N
RANGE: 64W

THIS MAP DOES NOT REPRESENT A BOUNDARY SURVEY

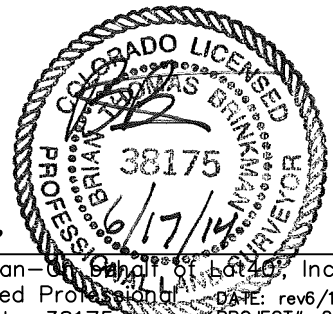


LEGEND

- = ALIQUOT MONUMENT AS DESCRIBED
- = CALCULATED POSITION

SHEET 2 OF 2

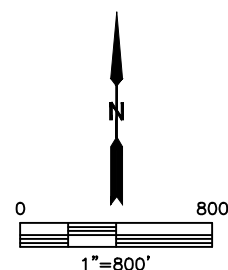
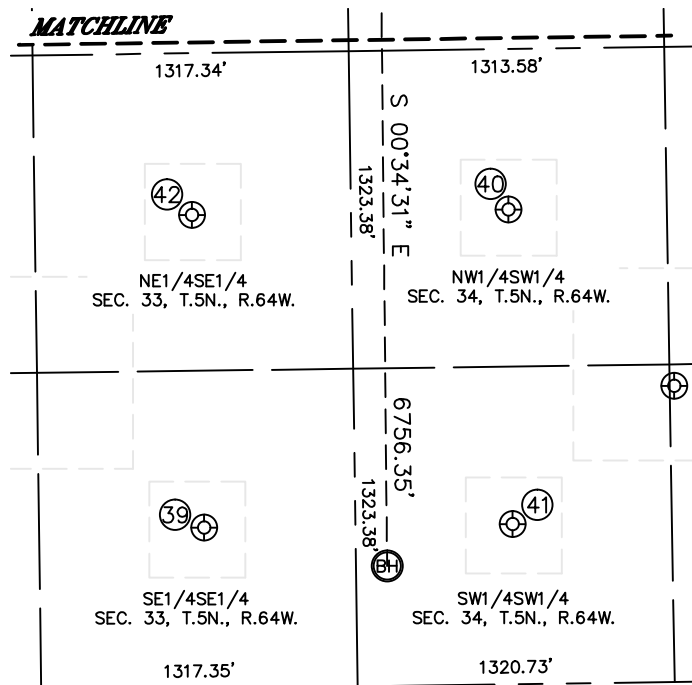
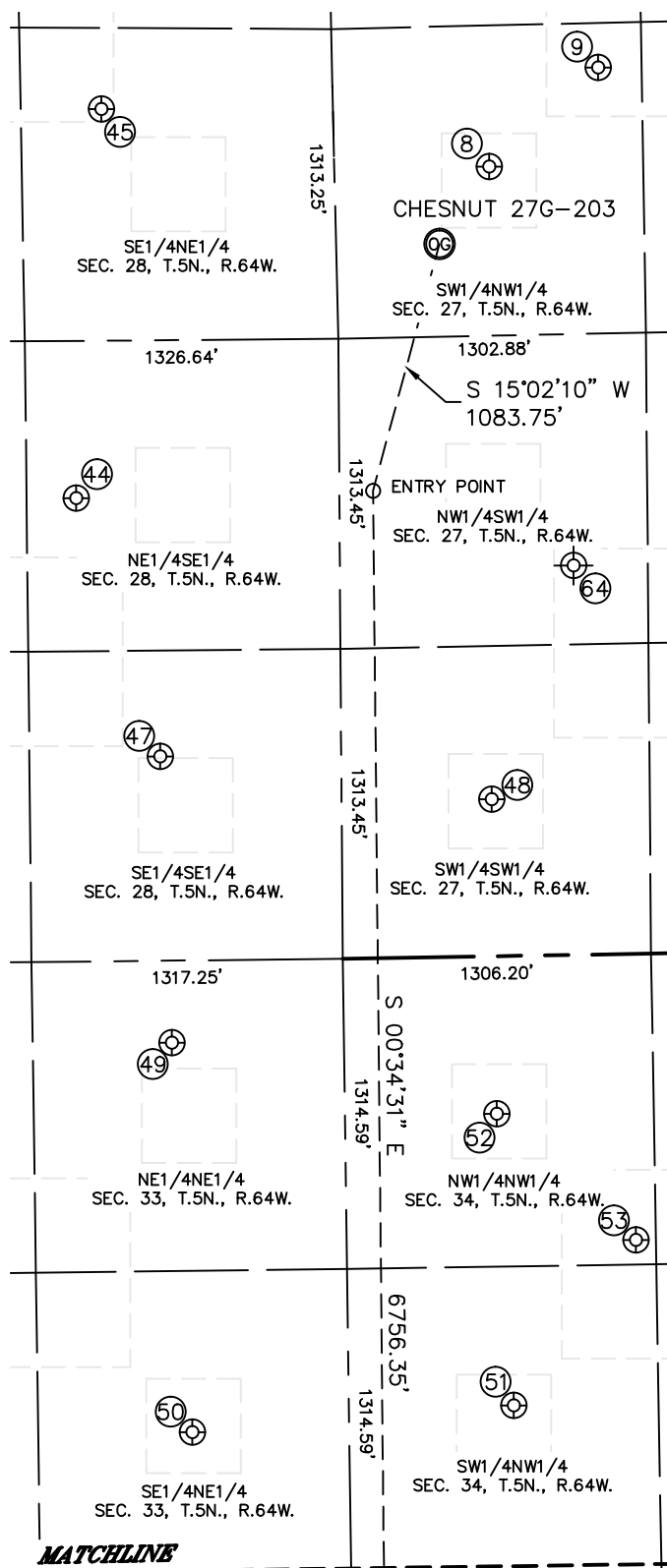
Brian T. Brinkman—*Surveyor*
Colorado Licensed Professional
Land Surveyor No. 38175
DATE: rev6/17/2014
PROJECT#: 2014004



SITE SKETCH

CHESNUT 27G-203

SECTION: 27
TOWNSHIP: 5N
RANGE: 64W





Lat40°, Inc. 1635 Foxtrail Drive, Suite 325 Loveland, CO 970-776-3321

SITE SKETCH

CHESNUT 27G-203

SECTION: 27
TOWNSHIP: 5N
RANGE: 64W

WELL NO.	WELL NAME	SHL FOOTAGE				SHL LAT°	SHL LONG°	PDOP	ELEV (FT.)	1/4/1/4
8	WHITE 27-6	1913	FNL	656	FWL	40.37222	-104.54283	1.8	4613	SWNW
9	WHITE 5	1505	FNL	1127	FWL	40.37336	-104.54116	2.0	4608	SWNW
39	ECKHARDT 1	669	FSL	630	FEL	40.35039	-104.54739	2.1	4672	SESE
40	BAILEY 34-1	1977	FSL	656	FWL	40.35399	-104.54279	1.9	4656	NWSW
41	BAILEY 14-34	667	FSL	655	FWL	40.35039	-104.54278	2.4	4668	SWSW
42	JEWELL 1	1972	FSL	663	FEL	40.35396	-104.54752	2.4	4661	NESE
44	P & A FARMS 28-2	1963	FSL	1114	FEL	40.36842	-104.54916	2.9	4634	NESE
45	HALL 28-1	1668	FNL	981	FEL	40.37294	-104.54871	1.8	4615	SENE
47	P & A FARMS 28-1	866	FSL	767	FEL	40.36541	-104.54792	3.0	4653	SESE
48	WHITE 27-8	665	FSL	636	FWL	40.36487	-104.54289	2.2	4634	SWSW
49	HENDRICKS 33-3	348	FNL	728	FEL	40.36208	-104.54779	1.7	4643	NENE
50	HENDRICKS 33-1	2000	FNL	664	FEL	40.35754	-104.54754	1.8	4658	SENE
51	WHITE 12-34	1905	FNL	698	FWL	40.35782	-104.54266	2.0	4650	SWNW
52	WHITE 34-2	669	FNL	643	FWL	40.36121	-104.54287	2.1	4642	NWNW
53	WHITE 1-1	1212	FNL	1225	FWL	40.35972	-104.54078	2.1	4643	NWNW
64	WHITE 27-1	1650	FSL	990	FWL	40.36750	-104.54167	N/A	4637	SWSW

NOTE: THE ABANDONED WELL DATA SHOWN IN RED ABOVE WAS OBTAINED FROM COGCC SCOUT CARDS.