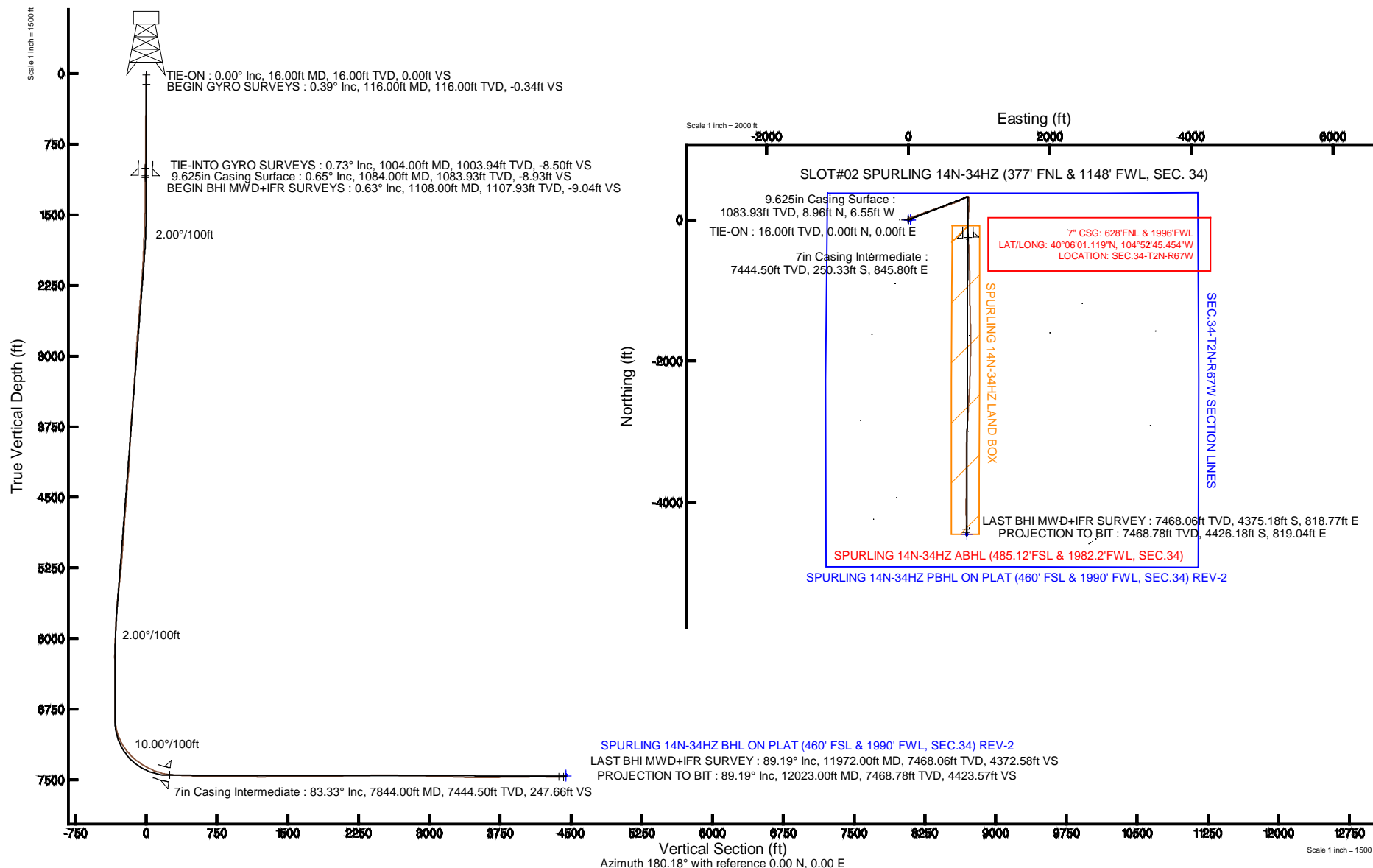


KERR-MCGEE OIL & GAS ONSHORE LP

Location: COLORADO Slot: SLOT#02 SPURLING 14N-34HZ (377' FNL & 1148' FWL, SEC. 34)
 Field: WELD COUNTY (KERR MCGEE) Well: SPURLING 14N-34HZ
 Facility: SEC.34-T2N-R67W Wellbore: SPURLING 14N-34HZ PWB

Plot reference wellpath is SPURLING 14N-34HZ (REV-A.0) PWP

True vertical depths are referenced to XTREME 6 (16'RKB) (RKB)	Grid System: NAD83 / Lambert Colorado SP, Northern Zone (501), US feet
Measured depths are referenced to XTREME 6 (16'RKB) (RKB)	North Reference: True north
XTREME 6 (16'RKB) (RKB) to Mean Sea Level: 5029 feet	Scale: True distance
Mean Sea Level to Mud line (At Slot: SLOT#02 SPURLING 14N-34HZ (377' FNL & 1148' FWL, SEC. 34)): 0 feet	Depths are in feet
Coordinates are in feet referenced to Slot	Created by: robale01 on 25/Jun/2014



Actual Wellpath Report

SPURLING 14N-34HZ AWP

Page 1 of 6

REFERENCE WELLPATH IDENTIFICATION

Operator	KERR-MCGEE OIL & GAS ONSHORE LP	Slot	SLOT#02 SPURLING 14N-34HZ (377' FNL & 1148' FWL, SEC. 34)
Area	COLORADO	Well	SPURLING 14N-34HZ
Field	WELD COUNTY (KERR MCGEE)	Wellbore	SPURLING 14N-34HZ AWP
Facility	SEC.34-T2N-R67W		

REPORT SETUP INFORMATION

Projection System	NAD83 / Lambert Colorado SP, Northern Zone (501), US feet	Software System	WellArchitect® 4.0.0
North Reference	True	User	Robiale01
Scale	0.99996	Report Generated	25/Jun/2014 at 12:48
Convergence at slot	n/a	Database/Source file	WellArchitectDB/SPURLING_14N-34HZ_AWP.xml

WELLPATH LOCATION

	Local coordinates		Grid coordinates		Geographic coordinates	
	North[ft]	East[ft]	Easting[US ft]	Northing[US ft]	Latitude	Longitude
Slot Location	0.00	-30.07	3172788.69	1280239.78	40°06'03.593"N	104°52'56.338"W
Facility Reference Pt			3172818.76	1280239.99	40°06'03.593"N	104°52'55.951"W
Field Reference Pt			3197771.84	1268891.29	40°04'09.600"N	104°47'36.000"W

WELLPATH DATUM

Calculation method	Minimum curvature	XTREME 6 (16'RKB) (RKB) to Facility Vertical Datum	5029.00ft
Horizontal Reference Pt	Slot	XTREME 6 (16'RKB) (RKB) to Mean Sea Level	5029.00ft
Vertical Reference Pt	XTREME 6 (16'RKB) (RKB)	XTREME 6 (16'RKB) (RKB) to Mud Line at Slot (SLOT#02 SPURLING 14N-34HZ (377' FNL & 1148' FWL, SEC. 34))	5029.00ft
MD Reference Pt	XTREME 6 (16'RKB) (RKB)	Section Origin	N 0.00, E 0.00 ft
Field Vertical Reference	Mean Sea Level	Section Azimuth	169.52°

REFERENCE WELLPATH IDENTIFICATION

Operator	KERR-MCGEE OIL & GAS ONSHORE LP	Slot	SLOT#02 SPURLING 14N-34HZ (377' FNL & 1148' FWL, SEC. 34)
Area	COLORADO	Well	SPURLING 14N-34HZ
Field	WELD COUNTY (KERR MCGEE)	Wellbore	SPURLING 14N-34HZ AWP
Facility	SEC.34-T2N-R67W		

WELLPATH DATA (134 stations) † = interpolated/extrapolated station

MD [ft]	Inclination [°]	Azimuth [°]	TVD [ft]	Vert Sect [ft]	North [ft]	East [ft]	Latitude	Longitude	DLS [°/100ft]	Comments
0.00†	0.000	352.980	0.00	0.00	0.00	0.00	40°06'03.593"N	104°52'56.338"W	0.00	
16.00	0.000	352.980	16.00	0.00	0.00	0.00	40°06'03.593"N	104°52'56.338"W	0.00	TIE-ON
116.00	0.390	352.980	116.00	-0.34	0.34	-0.04	40°06'03.596"N	104°52'56.339"W	0.39	BEGIN GYRO SURVEYS
216.00	0.540	344.000	216.00	-1.15	1.13	-0.21	40°06'03.604"N	104°52'56.341"W	0.17	
316.00	0.560	335.410	315.99	-2.09	2.03	-0.55	40°06'03.613"N	104°52'56.345"W	0.08	
416.00	0.610	325.560	415.99	-3.05	2.91	-1.05	40°06'03.622"N	104°52'56.352"W	0.11	
516.00	0.770	335.980	515.98	-4.19	3.96	-1.63	40°06'03.632"N	104°52'56.359"W	0.20	
616.00	0.710	327.040	615.97	-5.42	5.10	-2.24	40°06'03.643"N	104°52'56.367"W	0.13	
716.00	0.740	327.160	715.96	-6.59	6.16	-2.92	40°06'03.654"N	104°52'56.376"W	0.03	
816.00	0.710	308.600	815.95	-7.65	7.09	-3.76	40°06'03.663"N	104°52'56.386"W	0.24	
916.00	0.750	308.190	915.95	-8.61	7.88	-4.76	40°06'03.671"N	104°52'56.399"W	0.04	
1004.00	0.730	300.150	1003.94	-9.41	8.52	-5.69	40°06'03.677"N	104°52'56.411"W	0.12	TIE-INTO GYRO SURVEYS
1108.00	0.630	291.510	1107.93	-10.14	9.06	-6.80	40°06'03.683"N	104°52'56.425"W	0.14	BEGIN BHI MWD+IFR SURVEYS
1156.00	0.850	285.960	1155.93	-10.44	9.25	-7.39	40°06'03.684"N	104°52'56.433"W	0.48	
1248.00	0.690	292.650	1247.92	-11.05	9.65	-8.55	40°06'03.688"N	104°52'56.448"W	0.20	
1340.00	0.770	319.300	1339.91	-11.89	10.34	-9.47	40°06'03.695"N	104°52'56.460"W	0.38	
1431.00	1.530	46.770	1430.90	-13.07	11.63	-8.98	40°06'03.708"N	104°52'56.454"W	1.85	
1520.00	3.370	48.160	1519.81	-15.08	14.19	-6.17	40°06'03.733"N	104°52'56.417"W	2.07	
1610.00	4.300	60.910	1609.61	-17.53	17.60	-1.25	40°06'03.767"N	104°52'56.354"W	1.40	
1701.00	5.370	64.130	1700.29	-19.75	21.11	5.57	40°06'03.802"N	104°52'56.266"W	1.21	
1792.00	6.980	72.440	1790.76	-21.56	24.64	14.67	40°06'03.836"N	104°52'56.149"W	2.02	
1884.00	8.140	76.230	1881.96	-22.62	27.88	26.33	40°06'03.868"N	104°52'55.999"W	1.37	
1975.00	9.570	72.620	1971.87	-23.90	31.67	39.80	40°06'03.906"N	104°52'55.826"W	1.69	
2065.00	11.080	69.900	2060.41	-26.24	36.88	55.06	40°06'03.957"N	104°52'55.629"W	1.76	
2156.00	12.200	71.520	2149.54	-29.04	42.93	72.40	40°06'04.017"N	104°52'55.406"W	1.28	
2247.00	13.630	71.310	2238.24	-31.91	49.41	91.67	40°06'04.081"N	104°52'55.158"W	1.57	
2338.00	12.170	68.730	2326.94	-35.23	56.33	110.77	40°06'04.150"N	104°52'54.913"W	1.72	
2429.00	13.410	72.330	2415.68	-38.35	63.01	129.76	40°06'04.216"N	104°52'54.668"W	1.62	
2519.00	12.310	69.570	2503.42	-41.31	69.53	148.70	40°06'04.280"N	104°52'54.424"W	1.40	
2610.00	13.390	70.490	2592.14	-44.64	76.43	167.72	40°06'04.348"N	104°52'54.180"W	1.21	
2701.00	12.530	66.970	2680.82	-48.44	83.82	186.74	40°06'04.421"N	104°52'53.935"W	1.28	
2882.00	11.540	70.600	2857.84	-55.51	97.51	221.89	40°06'04.557"N	104°52'53.483"W	0.69	
3065.00	12.450	74.280	3036.85	-60.15	108.94	258.14	40°06'04.670"N	104°52'53.016"W	0.65	
3235.00	12.060	70.620	3202.98	-64.57	119.79	292.54	40°06'04.777"N	104°52'52.573"W	0.51	
3405.00	12.280	68.400	3369.16	-70.80	132.34	326.10	40°06'04.901"N	104°52'52.142"W	0.30	
3576.00	10.560	67.480	3536.77	-77.57	145.04	357.48	40°06'05.026"N	104°52'51.738"W	1.01	
3747.00	11.560	70.160	3704.59	-83.63	156.86	388.07	40°06'05.143"N	104°52'51.344"W	0.66	
3916.00	13.110	75.800	3869.69	-87.62	167.31	422.59	40°06'05.246"N	104°52'50.900"W	1.16	
4086.00	11.910	81.070	4035.66	-88.40	174.76	458.61	40°06'05.320"N	104°52'50.436"W	0.97	
4257.00	12.270	68.300	4202.89	-91.45	184.22	492.93	40°06'05.413"N	104°52'49.995"W	1.57	
4427.00	12.790	70.510	4368.84	-97.91	197.18	527.45	40°06'05.541"N	104°52'49.550"W	0.42	
4598.00	11.110	62.950	4536.14	-105.57	210.98	559.97	40°06'05.678"N	104°52'49.132"W	1.34	
4766.00	13.510	73.150	4700.29	-112.37	224.04	593.18	40°06'05.807"N	104°52'48.705"W	1.92	
4935.00	12.360	73.800	4865.00	-116.36	234.81	629.44	40°06'05.913"N	104°52'48.238"W	0.69	
5105.00	12.900	68.700	5030.89	-121.73	246.78	664.60	40°06'06.032"N	104°52'47.785"W	0.73	

Actual Wellpath Report

SPURLING 14N-34HZ AWP

Page 3 of 6

REFERENCE WELLPATH IDENTIFICATION			
Operator	KERR-MCGEE OIL & GAS ONSHORE LP	Slot	SLOT#02 SPURLING 14N-34HZ (377' FNL & 1148' FWL, SEC. 34)
Area	COLORADO	Well	SPURLING 14N-34HZ
Field	WELD COUNTY (KERR MCGEE)	Wellbore	SPURLING 14N-34HZ AWP
Facility	SEC.34-T2N-R67W		

WELLPATH DATA (134 stations) † = interpolated/extrapolated station										
MD [ft]	Inclination [°]	Azimuth [°]	TVD [ft]	Vert Sect [ft]	North [ft]	East [ft]	Latitude	Longitude	DLS [°/100ft]	Comments
5275.00	11.060	67.660	5197.18	-128.64	259.87	697.36	40°06'06.161"N	104°52'47.364"W	1.09	
5445.00	13.470	61.340	5363.29	-138.17	275.57	729.82	40°06'06.316"N	104°52'46.946"W	1.62	
5615.00	12.290	58.730	5529.01	-150.77	294.45	762.66	40°06'06.503"N	104°52'46.523"W	0.77	
5701.00	12.230	61.770	5613.05	-156.79	303.51	778.51	40°06'06.592"N	104°52'46.319"W	0.75	
5786.00	9.890	67.680	5696.47	-161.03	310.55	793.20	40°06'06.662"N	104°52'46.130"W	3.06	
5871.00	7.890	67.560	5780.45	-163.74	315.55	805.35	40°06'06.711"N	104°52'45.974"W	2.35	
5956.00	6.580	67.920	5864.77	-165.93	319.60	815.25	40°06'06.751"N	104°52'45.847"W	1.54	
6042.00	5.220	63.220	5950.31	-168.02	323.22	823.31	40°06'06.787"N	104°52'45.743"W	1.68	
6127.00	4.140	61.160	6035.03	-170.07	326.44	829.45	40°06'06.819"N	104°52'45.664"W	1.29	
6212.00	3.410	59.680	6119.84	-171.89	329.20	834.32	40°06'06.846"N	104°52'45.601"W	0.87	
6297.00	1.510	108.530	6204.77	-172.21	330.12	837.57	40°06'06.855"N	104°52'45.560"W	3.14	
6383.00	1.170	118.130	6290.74	-171.11	329.34	839.41	40°06'06.847"N	104°52'45.536"W	0.47	
6553.00	0.620	102.150	6460.72	-169.67	328.33	841.84	40°06'06.837"N	104°52'45.504"W	0.35	
6724.00	1.120	103.550	6631.70	-168.64	327.75	844.37	40°06'06.832"N	104°52'45.472"W	0.29	
6895.00	1.030	90.000	6802.67	-167.68	327.35	847.53	40°06'06.828"N	104°52'45.431"W	0.16	
6937.00	1.620	109.300	6844.66	-167.31	327.16	848.47	40°06'06.826"N	104°52'45.419"W	1.74	
6980.00	4.890	160.900	6887.59	-165.20	325.22	849.65	40°06'06.807"N	104°52'45.404"W	9.50	
7022.00	9.720	172.140	6929.24	-159.88	320.02	850.72	40°06'06.755"N	104°52'45.390"W	11.94	
7065.00	13.460	175.020	6971.36	-151.27	311.43	851.65	40°06'06.670"N	104°52'45.378"W	8.80	
7108.00	18.160	173.960	7012.72	-139.60	299.78	852.79	40°06'06.555"N	104°52'45.364"W	10.95	
7150.00	23.220	173.020	7052.00	-124.80	285.04	854.48	40°06'06.410"N	104°52'45.342"W	12.07	
7193.00	27.870	172.230	7090.78	-106.29	266.66	856.88	40°06'06.228"N	104°52'45.311"W	10.84	
7235.00	30.760	175.970	7127.40	-85.81	246.21	858.96	40°06'06.026"N	104°52'45.284"W	8.14	
7278.00	34.520	180.730	7163.61	-62.92	223.05	859.58	40°06'05.797"N	104°52'45.276"W	10.58	
7321.00	38.580	184.330	7198.15	-37.99	197.48	858.41	40°06'05.544"N	104°52'45.291"W	10.67	
7364.00	43.530	185.600	7230.57	-10.79	169.36	855.95	40°06'05.266"N	104°52'45.323"W	11.67	
7406.00	47.490	184.430	7260.00	18.08	139.52	853.34	40°06'04.972"N	104°52'45.357"W	9.64	
7449.00	51.980	183.720	7287.78	49.83	106.80	851.02	40°06'04.648"N	104°52'45.387"W	10.52	
7492.00	54.610	183.990	7313.48	83.23	72.40	848.70	40°06'04.308"N	104°52'45.416"W	6.14	
7535.00	58.100	184.050	7337.30	117.88	36.70	846.19	40°06'03.956"N	104°52'45.449"W	8.12	
7577.00	60.770	183.720	7358.66	152.91	0.62	843.74	40°06'03.599"N	104°52'45.480"W	6.39	
7620.00	63.760	182.420	7378.67	189.91	-37.38	841.71	40°06'03.223"N	104°52'45.506"W	7.45	
7663.00	67.240	181.220	7396.50	228.13	-76.48	840.47	40°06'02.837"N	104°52'45.522"W	8.48	
7706.00	70.950	178.770	7411.84	267.62	-116.64	840.48	40°06'02.440"N	104°52'45.522"W	10.14	
7749.00	73.860	178.140	7424.84	308.11	-157.61	841.59	40°06'02.035"N	104°52'45.508"W	6.91	
7791.00	76.950	177.880	7435.42	348.30	-198.22	843.00	40°06'01.634"N	104°52'45.490"W	7.38	
7834.00	82.110	176.290	7443.23	390.20	-240.44	845.16	40°06'01.217"N	104°52'45.462"W	12.54	
7844.00†	83.326	176.333	7444.50	400.05	-250.33	845.80	40°06'01.119"N	104°52'45.454"W	12.17	7" CASING POINT
7878.00	87.460	176.480	7447.23	433.69	-284.15	847.92	40°06'00.785"N	104°52'45.427"W	12.17	
7926.00	87.140	176.930	7449.49	481.26	-332.02	850.67	40°06'00.312"N	104°52'45.391"W	1.15	
8011.00	87.460	177.170	7453.49	565.43	-416.81	855.04	40°05'59.474"N	104°52'45.335"W	0.47	
8096.00	88.360	177.320	7456.59	649.60	-501.66	859.13	40°05'58.635"N	104°52'45.282"W	1.07	
8181.00	88.760	178.810	7458.73	733.63	-586.58	862.00	40°05'57.796"N	104°52'45.246"W	1.81	
8267.00	87.960	178.540	7461.19	818.50	-672.52	863.98	40°05'56.947"N	104°52'45.220"W	0.98	
8352.00	89.380	179.510	7463.16	902.31	-757.48	865.43	40°05'56.107"N	104°52'45.201"W	2.02	

Actual Wellpath Report

SPURLING 14N-34HZ AWP

Page 4 of 6

REFERENCE WELLPATH IDENTIFICATION			
Operator	KERR-MCGEE OIL & GAS ONSHORE LP	Slot	SLOT#02 SPURLING 14N-34HZ (377' FNL & 1148' FWL, SEC. 34)
Area	COLORADO	Well	SPURLING 14N-34HZ
Field	WELD COUNTY (KERR MCGEE)	Wellbore	SPURLING 14N-34HZ AWP
Facility	SEC.34-T2N-R67W		

WELLPATH DATA (134 stations)										
MD [ft]	Inclination [°]	Azimuth [°]	TVD [ft]	Vert Sect [ft]	North [ft]	East [ft]	Latitude	Longitude	DLS [°/100ft]	Comments
8437.00	88.800	179.720	7464.51	985.98	-842.47	866.00	40°05'55.267"N	104°52'45.194"W	0.73	
8522.00	90.460	179.610	7465.06	1069.64	-927.46	866.50	40°05'54.428"N	104°52'45.188"W	1.96	
8606.00	89.960	179.080	7464.75	1152.41	-1011.45	867.46	40°05'53.598"N	104°52'45.175"W	0.87	
8691.00	89.410	179.000	7465.22	1236.24	-1096.44	868.88	40°05'52.758"N	104°52'45.157"W	0.65	
8774.00	88.980	178.370	7466.39	1318.17	-1179.41	870.79	40°05'51.938"N	104°52'45.133"W	0.92	
8859.00	90.920	179.060	7466.46	1402.07	-1264.38	872.69	40°05'51.098"N	104°52'45.108"W	2.42	
8944.00	90.490	178.890	7465.42	1485.91	-1349.36	874.21	40°05'50.258"N	104°52'45.089"W	0.54	
9029.00	89.840	177.680	7465.17	1569.91	-1434.32	876.76	40°05'49.419"N	104°52'45.056"W	1.62	
9115.00	90.830	177.880	7464.67	1655.02	-1520.26	880.09	40°05'48.569"N	104°52'45.013"W	1.17	
9199.00	90.920	179.080	7463.39	1737.98	-1604.22	882.32	40°05'47.740"N	104°52'44.985"W	1.43	
9285.00	91.100	180.360	7461.87	1822.60	-1690.20	882.74	40°05'46.890"N	104°52'44.979"W	1.50	
9370.00	90.580	181.400	7460.62	1905.93	-1775.18	881.43	40°05'46.050"N	104°52'44.996"W	1.37	
9455.00	90.180	181.150	7460.06	1989.14	-1860.16	879.54	40°05'45.211"N	104°52'45.020"W	0.55	
9540.00	91.260	181.570	7458.99	2072.32	-1945.12	877.52	40°05'44.371"N	104°52'45.046"W	1.36	
9625.00	91.010	181.230	7457.31	2155.48	-2030.08	875.45	40°05'43.531"N	104°52'45.073"W	0.50	
9710.00	90.870	181.570	7455.91	2238.65	-2115.04	873.37	40°05'42.692"N	104°52'45.100"W	0.43	
9796.00	91.100	180.640	7454.43	2322.89	-2201.01	871.71	40°05'41.842"N	104°52'45.121"W	1.11	
9881.00	91.140	181.880	7452.77	2406.09	-2285.98	869.84	40°05'41.002"N	104°52'45.145"W	1.46	
9966.00	90.610	183.910	7451.48	2488.77	-2370.85	865.55	40°05'40.164"N	104°52'45.201"W	2.47	
10052.00	90.830	183.560	7450.39	2572.13	-2456.66	859.95	40°05'39.316"N	104°52'45.273"W	0.48	
10137.00	90.060	183.420	7449.73	2654.61	-2541.50	854.77	40°05'38.477"N	104°52'45.339"W	0.92	
10222.00	88.730	183.150	7450.63	2737.16	-2626.36	849.90	40°05'37.639"N	104°52'45.402"W	1.60	
10308.00	89.000	182.610	7452.34	2820.81	-2712.23	845.58	40°05'36.790"N	104°52'45.458"W	0.70	
10393.00	89.290	183.240	7453.60	2903.49	-2797.11	841.25	40°05'35.951"N	104°52'45.514"W	0.82	
10478.00	89.320	183.230	7454.63	2986.06	-2881.97	836.45	40°05'35.113"N	104°52'45.575"W	0.04	
10563.00	88.300	182.530	7456.40	3068.73	-2966.84	832.18	40°05'34.274"N	104°52'45.630"W	1.46	
10648.00	88.090	182.780	7459.08	3151.47	-3051.71	828.25	40°05'33.435"N	104°52'45.681"W	0.38	
10734.00	87.560	181.580	7462.34	3235.31	-3137.58	824.98	40°05'32.587"N	104°52'45.723"W	1.52	
10819.00	87.850	182.220	7465.75	3318.27	-3222.47	822.16	40°05'31.748"N	104°52'45.759"W	0.83	
10904.00	87.700	181.240	7469.05	3401.28	-3307.36	819.60	40°05'30.909"N	104°52'45.792"W	1.17	
10990.00	88.670	180.340	7471.77	3485.58	-3393.31	818.41	40°05'30.060"N	104°52'45.808"W	1.54	
11075.00	89.690	179.590	7472.99	3569.16	-3478.30	818.46	40°05'29.220"N	104°52'45.807"W	1.49	
11160.00	90.770	179.460	7472.64	3652.86	-3563.29	819.17	40°05'28.380"N	104°52'45.798"W	1.28	
11246.00	90.270	178.800	7471.86	3737.65	-3649.28	820.47	40°05'27.530"N	104°52'45.781"W	0.96	
11331.00	90.150	179.950	7471.55	3821.39	-3734.27	821.40	40°05'26.690"N	104°52'45.769"W	1.36	
11416.00	91.540	181.330	7470.30	3904.78	-3819.25	820.45	40°05'25.850"N	104°52'45.782"W	2.30	
11502.00	91.100	180.910	7468.32	3989.00	-3905.21	818.77	40°05'25.001"N	104°52'45.803"W	0.71	
11588.00	90.550	179.990	7467.08	4073.43	-3991.20	818.10	40°05'24.151"N	104°52'45.812"W	1.25	
11674.00	90.520	179.940	7466.28	4158.00	-4077.20	818.15	40°05'23.301"N	104°52'45.811"W	0.07	
11759.00	89.840	179.990	7466.01	4241.59	-4162.20	818.20	40°05'22.461"N	104°52'45.811"W	0.80	
11845.00	89.160	179.880	7466.76	4326.17	-4248.19	818.30	40°05'21.612"N	104°52'45.809"W	0.80	
11930.00	89.660	179.750	7467.64	4409.80	-4333.19	818.57	40°05'20.772"N	104°52'45.806"W	0.61	
11972.00	89.190	179.700	7468.06	4451.13	-4375.18	818.77	40°05'20.357"N	104°52'45.803"W	1.13	LAST BHI MWD+IFR SURVEY
12023.00	89.190	179.700	7468.78	4501.32	-4426.18	819.04	40°05'19.853"N	104°52'45.800"W	0.00	PROJECTION TO BIT

Actual Wellpath Report

SPURLING 14N-34HZ AWP

Page 5 of 6

REFERENCE WELLPATH IDENTIFICATION

Operator	KERR-MCGEE OIL & GAS ONSHORE LP	Slot	SLOT#02 SPURLING 14N-34HZ (377' FNL & 1148' FWL, SEC. 34)
Area	COLORADO	Well	SPURLING 14N-34HZ
Field	WELD COUNTY (KERR MCGEE)	Wellbore	SPURLING 14N-34HZ AWB
Facility	SEC.34-T2N-R67W		

HOLE & CASING SECTIONS - Ref Wellbore: SPURLING 14N-34HZ AWB Ref Wellpath: SPURLING 14N-34HZ AWP

String/Diameter	Start MD [ft]	End MD [ft]	Interval [ft]	Start TVD [ft]	End TVD [ft]	Start N/S [ft]	Start E/W [ft]	End N/S [ft]	End E/W [ft]
13.5in Open Hole	16.00	1084.00	1068.00	16.00	1083.93	0.00	0.00	8.96	-6.55
9.625in Casing Surface	16.00	1084.00	1068.00	16.00	1083.93	0.00	0.00	8.96	-6.55
8.75in Open Hole	1084.00	7878.00	6794.00	1083.93	7447.23	8.96	-6.55	-284.15	847.92
7in Casing Intermediate	16.00	7844.00	7828.00	16.00	7444.50	0.00	0.00	-250.33	845.80
6.125in Open Hole	7878.00	12023.00	4145.00	7447.23	7468.78	-284.15	847.92	-4426.18	819.04

TARGETS

Name	MD [ft]	TVD [ft]	North [ft]	East [ft]	Grid East [US ft]	Grid North [US ft]	Latitude	Longitude	Shape
SEC.34-T2N-R47W HARD LINES (460' SETBACKS)		5029.00	0.00	30.00	3172818.68	1280239.99	40°06'03.593"N	104°52'55.952"W	polygon
SEC.34-T2N-R67W SECTION LINES		5029.00	0.00	30.00	3172818.68	1280239.99	40°06'03.593"N	104°52'55.952"W	polygon
SPURLING 14N-34HZ (460' FSL & 1990' FWL, SEC.34)		7448.00	-4451.30	826.84	3173646.48	1275794.53	40°05'19.604"N	104°52'45.700"W	point
SPURLING 14N-34HZ BHL ON PLAT (460' FSL & 1990' FWL, SEC.34) REV-2		7458.00	-4451.30	826.84	3173646.48	1275794.54	40°05'19.604"N	104°52'45.700"W	point
SPURLING 14N-34HZ LAND BOX		7500.00	0.00	0.00	3172788.69	1280239.78	40°06'03.593"N	104°52'56.338"W	polygon

WELLPATH COMPOSITION - Ref Wellbore: SPURLING 14N-34HZ AWB Ref Wellpath: SPURLING 14N-34HZ AWP

Start MD [ft]	End MD [ft]	Positional Uncertainty Model	Log Name/Comment	Wellbore
16.00	1004.00	Generic gyro - continuous (Standard)	MS GYRODATA SURVEYS <116-1004>	SPURLING 14N-34HZ AWB
1004.00	7878.00	NaviTrak (MAGCORR,IFR)	BHI MWD+IFR SURVEYS 8 3/4" HOLE <1108-7878>	SPURLING 14N-34HZ AWB
7878.00	11972.00	NaviTrak (MAGCORR,IFR)	BHI MWD+IFR SURVEYS 6 1/8" HOLE <7926-11972>	SPURLING 14N-34HZ AWB
11972.00	12023.00	Blind Drilling (std)	Projection to bit	SPURLING 14N-34HZ AWB

Actual Wellpath Report

SPURLING 14N-34HZ AWP

Page 6 of 6

REFERENCE WELLPATH IDENTIFICATION				
Operator	KERR-MCGEE OIL & GAS ONSHORE LP	Slot	SLOT#02 SPURLING 14N-34HZ (377' FNL & 1148' FWL, SEC. 34)	
Area	COLORADO	Well	SPURLING 14N-34HZ	
Field	WELD COUNTY (KERR MCGEE)	Wellbore	SPURLING 14N-34HZ AWP	
Facility	SEC.34-T2N-R67W			

WELLPATH COMMENTS				
MD [ft]	Inclination [°]	Azimuth [°]	TVD [ft]	Comment
16.00	0.000	352.980	16.00	TIE-ON
116.00	0.390	352.980	116.00	BEGIN GYRO SURVEYS
1004.00	0.730	300.150	1003.94	TIE-INTO GYRO SURVEYS
1108.00	0.630	291.510	1107.93	BEGIN BHI MWD+IFR SURVEYS
7844.00	83.326	176.333	7444.50	7" CASING POINT
11972.00	89.190	179.700	7468.06	LAST BHI MWD+IFR SURVEY
12023.00	89.190	179.700	7468.78	PROJECTION TO BIT