

**Note:**

The measurement for determining any Designated Setback Location shall be made from the center of the Well nearest any Building Unit to the nearest wall or corner of such Building Unit.

Building - 618'  
 Building Unit - 482'  
 HOBV - 5282'  
 DOAA - N/A  
 Public Road - 245'  
 Above Grnd Util. - 237'  
 Railroad - 4994'  
 Property Line - 223'

Current Surface Land Use :  
 Range Land

**Legend**

- ◈ - Field Surveyed Section Corner
- ◈ - Field Surveyed Quarter Corner
- - Calculated Section Corner Location
- ⊕ - Field Surveyed 1/16 Corner

750' 0' 1500'  
 Graphic Scale in Feet  
 1"= 1500'

**Surface: 41D-08-07-95**

223' FSL  
 558 FEL  
 Gnd El= 5528  
 Pad El= 5532  
**NAD83**  
 Lat: 39.460023513°N  
 Long: 108.013870213°W

**Bottom: 41D-08-07-95**

1100' FNL  
 660' FEL  
**NAD83**  
 Lat: 39.456397195°N  
 Long: 108.014166856°W

**Notes:**

1. LATITUDE AND LONGITUDE COORDINATES ARE DIFFERENTIALLY CORRECTED AND BASED ON PUBLISHED NGS CONTROL STATION "WDP-5". SYSTEM: UTM ZONE: 13 NORTH DATUM: NAD 1983 (CONUS)
2. ELEVATIONS ARE BASED ON NAVD OF 1929.
3. ALL BOTTOM AND TOP HOLE LOCATIONS ARE MEASURED 90 DEGREES FROM SECTION LINE.
4. USGS QUADRANGLE MAP "GRAND VALLEY".
5. CURRENT SURFACE LAND USE: RANGE LAND.
6. PDOP AT THE TIME OF LOCATION OF SURFACE WELL = 1.7
7. GPS OPERATOR: P. HOFFMANN

**Prepared For: Ursa Operating Company LLC**  
**Proposed Tompkins 41D-08-07-95 Well, Surface Situate in**  
**The SE1/4SE1/4 Section 5, Township 7 South, Range 95**  
**West of the 6 th. Principal Meridian, County of Garfield,**  
**State of Colorado.**

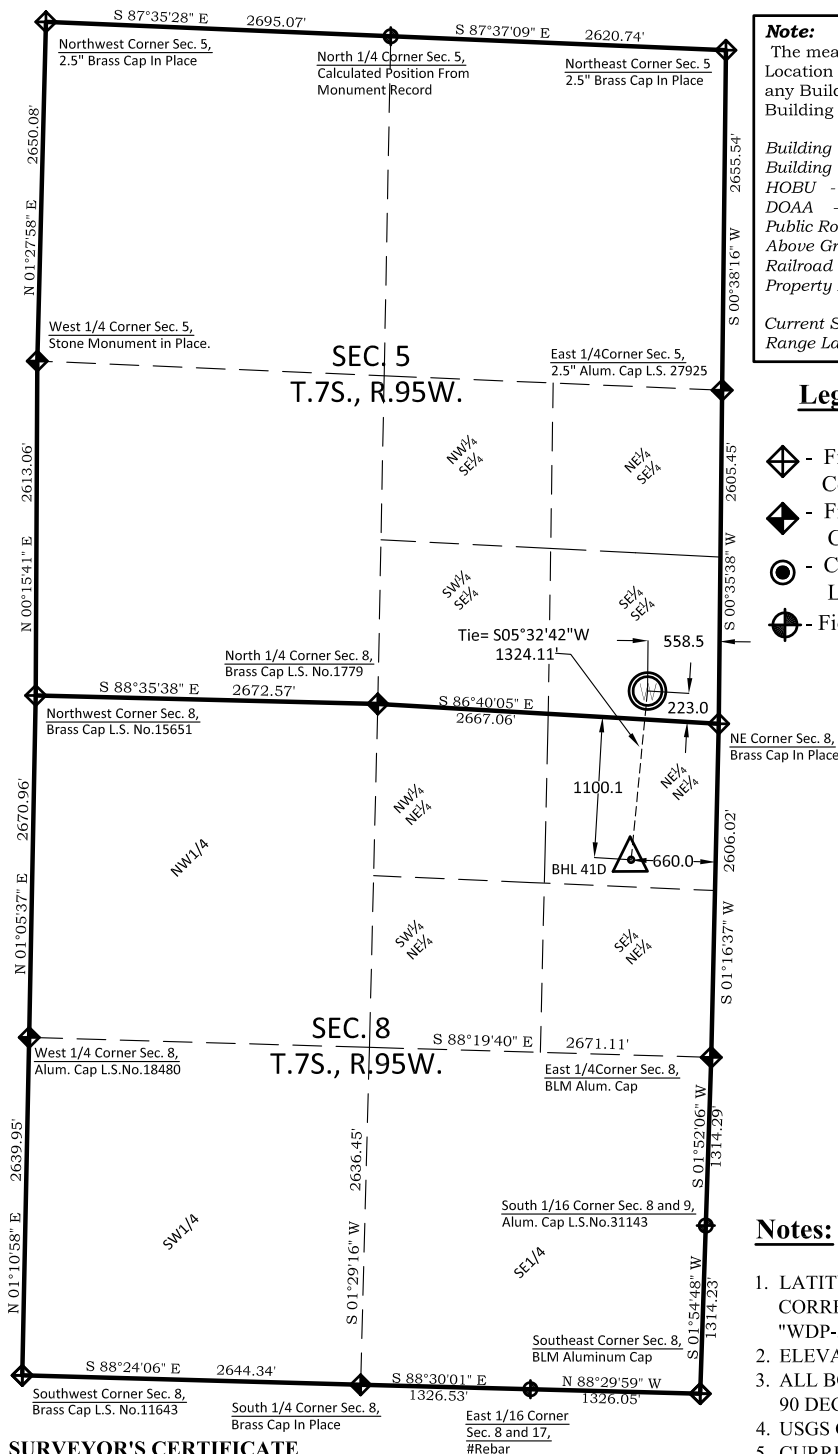


**303.a Form 2**

**Tompkins Pad**

**Tompkins Well 41D-08-07-95**

**Section 8, Township 7 South, Range 95 West**

**SURVEYOR'S CERTIFICATE**

I, SCOTT E. AIBNER, A REGISTERED LAND SURVEYOR, LICENSED UNDER THE LAWS OF THE STATE OF COLORADO, DO HEREBY CERTIFY THAT THE SURVEY SHOWN HEREON WAS PREPARED BY RIVER VALLEY SURVEY, INC., FOR URSA OPERATING COMPANY LLC, BY ME OR UNDER MY DIRECT SUPERVISION AND HAS BEEN STAKED ON THE GROUND AND SHOWN ON THE PLAT AND THAT THIS PLAT IS A TRUE REPRESENTATION THEREOF.

BY:   
 SCOTT E. AIBNER, COLORADO REG. NO. 31143



**River Valley Survey, Inc.**  
 110 East 3rd. Street, Suite 213  
 Rifle, Colorado 81650  
 Ph: 970-379-7846

**Project: RVS 06001-47**

**Field Date: 04-22-14**

**Scale: 1"= 1500'**

**Date: 05-27-14**

**Sheet: 1 of 1**