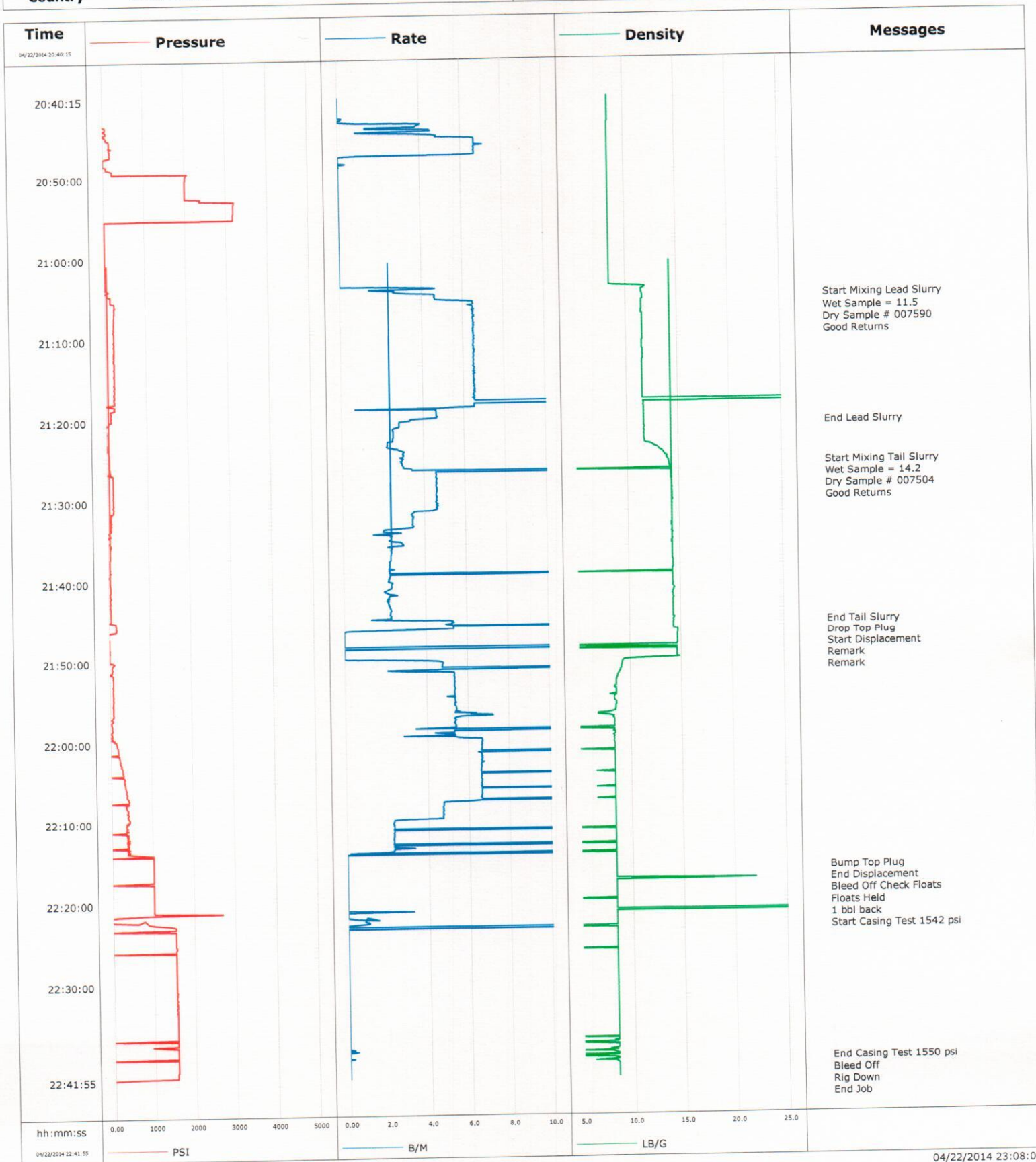


Well Razor Federal 26J-3511A
Field
Engineer Cole Fairbrook/ J Warmoth
Country United States

Client Whiting
SIR No. C459-02626
Job Type Surface
Job Date 04-22-2014





Cementing Service Report

				Customer Whiting		Job Number C459-02626											
Well Razor Federal 26J-3511A		Location (legal)		Schlumberger Location Rock Springs		Job Start Apr/22/2014											
Field		Formation Name/Type Dirty-Sandstone		Deviation deg		Bit Size 13.5 in		Well MD 1536.0 ft		Well TVD 1536.0 ft							
County Weld		State/Province Colorado		BHP psi		BHST 99 degF		BHCT 82 degF		Pore Press. Gradient lb/gal							
Well Master		API/UWI															
Rig Name Xtreme 18		Drilled For Oil		Service Via Land		Casing/Liner											
						Depth, ft		Size, in		Weight, lb/ft		Grade		Thread			
Offshore Zone		Well Class New		Well Type		1536.0		9.6		36.0		110		8RD			
						0.0		0.0		0.0							
Drilling Fluid Type		Max. Density lb/gal		Plastic Viscosity cP		Tubing/Drill Pipe											
						T/D		Depth, ft		Size, in		Weight, lb/ft		Grade		Thread	
Service Line Cementing		Job Type Surface															
Max. Allowed Tub. Press psi		Max. Allowed Ann. Press psi		WH Connection Single Cement head		Perforations/Open Hole											
						Top, ft		Bottom, ft		shot/ft		No. of Shots		Total Interval ft			
Service Instructions 20 bbl Water 116 bbl Lead yeld 2.92 215 SKS 68 bbl Tail Yeld 1.52 250 SKS 115.5 bbl Water Disp						ft		ft						Diameter in			
						ft		ft									
						ft		ft									
Treat Down Casing		Displacement 115.5 bbl		Packer Type		Packer Depth ft											
Tubing Vol. bbl		Casing Vol. 117.0 bbl		Annular Vol. 136.0 bbl		Openhole Vol. 256.0 bbl											
Casing/Tubing Secured <input type="checkbox"/>		1 Hole Vol. Circulated prior to Cement <input type="checkbox"/>				Casing Tools		Squeeze Job									
Lift Pressure 760 psi		Shoe Type Float		Squeeze Type													
Pipe Rotated <input type="checkbox"/>		Pipe Reciprocated <input type="checkbox"/>		Shoe Depth 1536.0 ft		Tool Type											
No. Centralizers		Top Plugs 1		Bottom Plugs		Stage Tool Type		Tool Depth ft									
Cement Head Type Single		Stage Tool Depth ft		Tail Pipe Size in													
Job Scheduled For Apr/22/2014		Arrived on Location Apr/22/2014		Leave Location Apr/22/2014		Collar Type Guide		Tail Pipe Depth ft									
						Collar Depth 1494.0 ft		Sqz. Total Vol. bbl									
Date	Time 24-hr clock	Treating Pressure PSI	Flow Rate B/M	Density LB/G	Volume BBL	Message											
04/22/2014	20:40:15	0	0.0	0.00	0.0	Started Acquisition											
04/22/2014	20:45:15	0	0.0	0.00	0.0												
04/22/2014	20:50:15	0	0.0	0.00	0.0												
04/22/2014	20:55:15	0	0.0	0.00	0.0												
04/22/2014	21:00:15	0	0.0	0.00	0.0												
04/22/2014	21:04:55	0	0.0	0.00	0.0	Start Mixing Lead Slurry											
04/22/2014	21:05:15	0	0.0	0.00	0.0												
04/22/2014	21:06:30	0	0.0	0.00	0.0	Wet Sample = 11.5											
04/22/2014	21:10:15	0	0.0	0.00	0.0												
04/22/2014	21:15:15	0	0.0	0.00	0.0												
04/22/2014	21:20:15	0	0.0	0.00	0.0												
04/22/2014	21:20:40	0	0.0	0.00	0.0	End Lead Slurry											
04/22/2014	21:25:15	0	0.0	0.00	8.2												
04/22/2014	21:25:35	0	0.0	0.00	9.2	Start Mixing Tail Slurry											
04/22/2014	21:25:40	0	0.0	0.00	9.4	Wet Sample = 14.2											
04/22/2014	21:30:15	0	0.0	0.00	41.0												
04/22/2014	21:35:15	0	0.0	0.00	57.5												
04/22/2014	21:40:15	0	0.0	0.00	72.6												
04/22/2014	21:45:15	0	0.0	0.00	84.5												
04/22/2014	21:45:20	0	0.0	0.00	84.9	End Tail Slurry											
04/22/2014	21:45:25	0	0.0	0.00	85.4	Start Displacement											

Well			Field		Job Start	Customer		Job Number
Razor Federal 26J-3511A					Apr/22/2014	Whiting		C459-02626
Date	Time 24-hr clock	Treating Pressure PSI		Flow Rate B/M	Density LB/G	Volume BBL	Message	
04/22/2014	21:55:15	0		0.0	0.00	127.9		
04/22/2014	22:00:15	0		0.0	0.00	156.2		
04/22/2014	22:05:15	0		0.0	0.00	198.8		
04/22/2014	22:10:15	0		0.0	0.00	241.2		
04/22/2014	22:15:15	0		0.0	0.00	279.4		
04/22/2014	22:15:55	0		0.0	0.00	279.4	Bump Top Plug	
04/22/2014	22:16:00	0		0.0	0.00	279.4	Bleed Off Check Floats	
04/22/2014	22:20:15	0		0.0	0.00	279.4		
04/22/2014	22:22:55	0		0.0	0.00	280.6	Start Casing Test 1542 psi	
04/22/2014	22:25:15	0		0.0	0.00	641.8		
04/22/2014	22:30:15	0		0.0	0.00	641.8		
04/22/2014	22:35:15	0		0.0	0.00	641.8		
04/22/2014	22:39:45	0		0.0	0.00	641.8	End Casing Test 1550 psi	
04/22/2014	22:40:15	0		0.0	0.00	641.8		
04/22/2014	22:40:25	0		0.0	0.00	641.8	Bleed Off	

Post Job Summary

Average Pump Rates, bbl/min					Volume of Fluid Injected, bbl			
Slurry	N2	Mud	Maximum Rate		Total Slurry	Mud	Spacer	N2
10.6			2889.0		641.8	0.0	0.0	
Treating Pressure Summary, psi					Breakdown Fluid			
Maximum	Final	Average	Bump Plug to	Breakdown	Type	Volume	Density	
3192	-5	538	1200			bbl	lb/gal	
Avg. N2 Percent	Designed Slurry Volume	Displacement	Mix Water Temp	Cement Circulated to Surface?	Washed Thru Perfs	Volume	To	
%	0.0 bbl	115 189.0 bbl	degF	<input checked="" type="checkbox"/>	<input type="checkbox"/>	60.0 bbl	ft	
Customer or Authorized Representative			Schlumberger Supervisor	Circulation Lost	Job Completed			
			Cole Fairbrook/ J Warmoth	-	-			