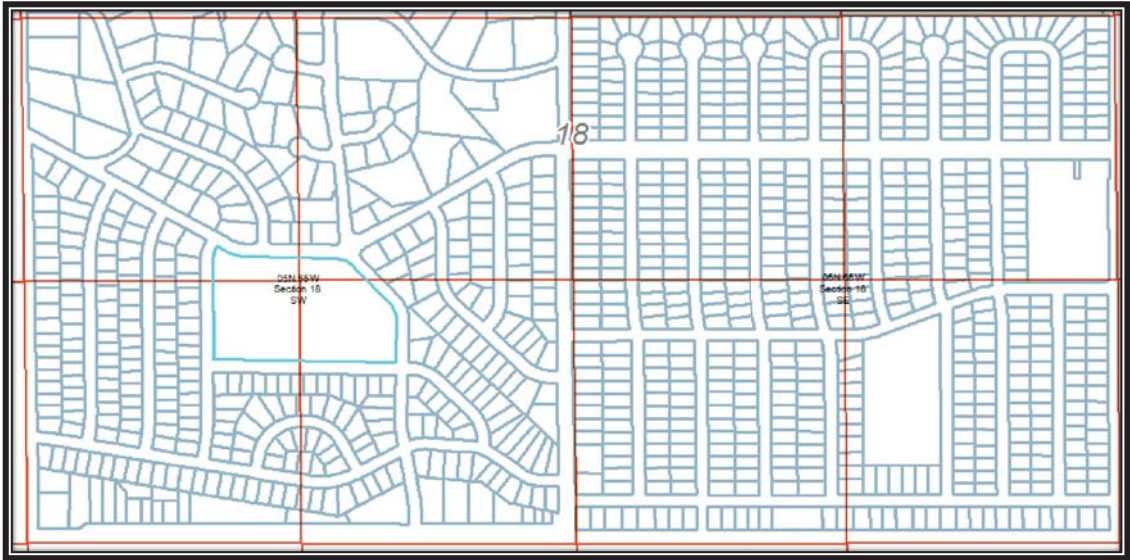


3.) Spacing Unit: Jackson, Greeley Commerce Center

Legal Description: S/2, Sec. 18, T5N, R65W

Lessor:	Weld County School District 6
Lessee:	Mineral Resources, Inc.
Reception No.:	3858328
Reception Date:	7/11/2012
Lease Date:	6/13/2012
Net Acres:	9.7845



Key: Selected Lease for Spacing Unit