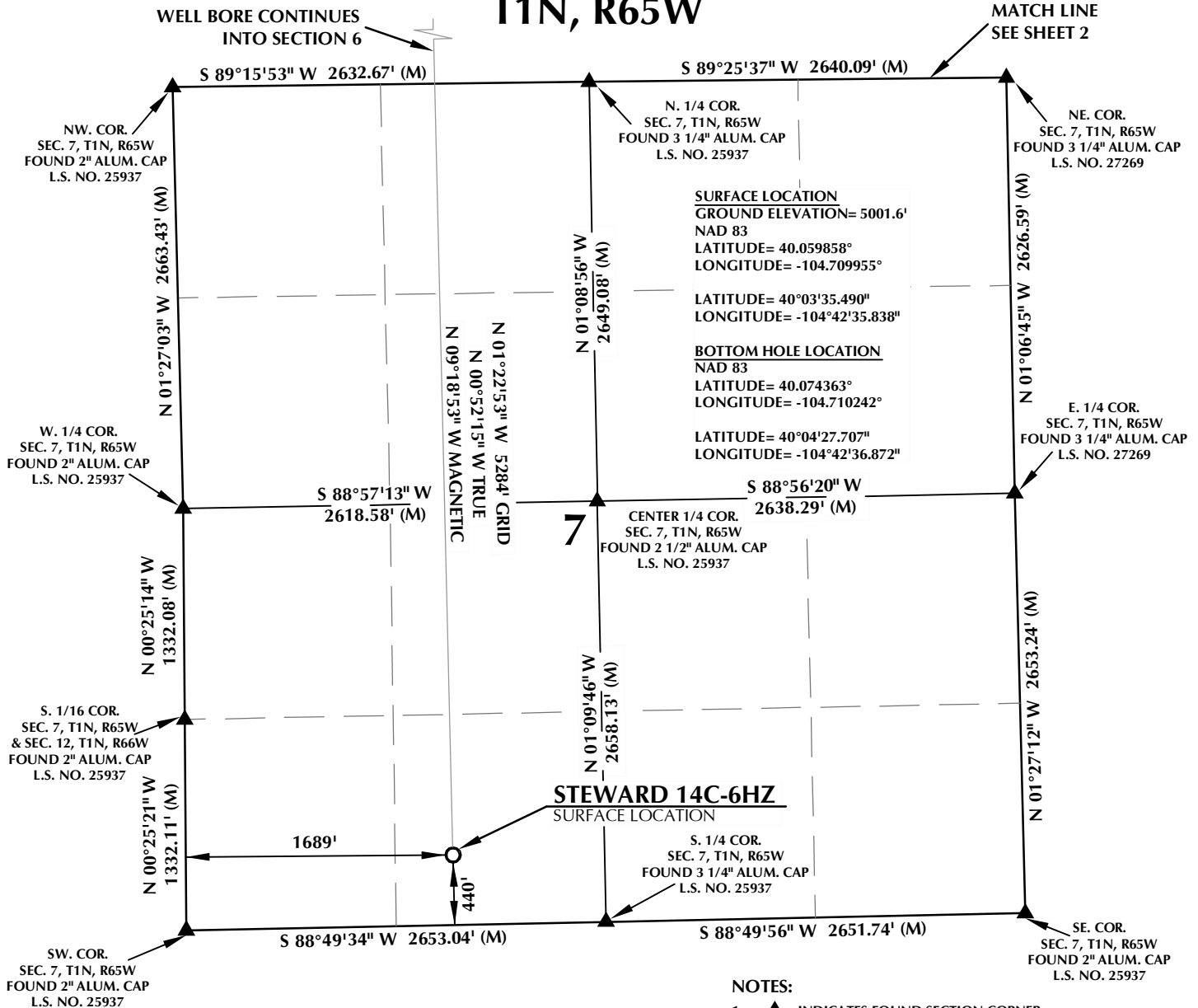


# T1N, R65W

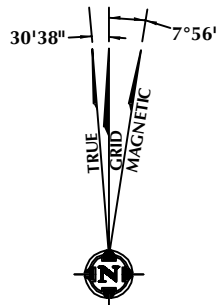


## CERTIFICATE OF SURVEYOR:

THIS IS TO CERTIFY THAT THE ABOVE PLAT WAS PREPARED FROM FIELD NOTES OF ACTUAL SURVEY MADE BY ME OR UNDER MY SUPERVISION AND THAT THE SAME ARE TRUE AND CORRECT TO THE BEST OF MY KNOWLEDGE AND BELIEF. THIS CERTIFICATE DOES NOT REPRESENT A LAND SURVEY PLAT OR IMPROVEMENT SURVEY PLAT AS DEFINED BY C.S. 38-51-102 AND CANNOT BE RELIED UPON TO DETERMINE OWNERSHIP.

*Benjamin J. Reenders*  
 BENJAMIN J. REENDERS  
 PROFESSIONAL LAND SURVEYOR  
 COLORADO REGISTRATION NUMBER 48306 3/21/14

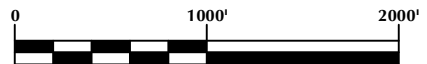
NOTICE:  
 ACCORDING TO COLORADO STATE LAW YOU MUST COMMENCE ANY LEGAL ACTION BASED UPON ANY DEFECT IN THIS SURVEY WITHIN THREE YEARS AFTER YOU FIRST DISCOVER SUCH DEFECT. IN NO EVENT MAY ANY ACTION BASED UPON ANY DEFECT IN THIS SURVEY BE COMMENCED MORE THAN TEN YEARS FROM THE DATE ON THE CERTIFICATION SHOWN HEREON.



NOTE:  
 MAGNETIC NORTH IS CURRENT AS OF 3/18/2014.  
 MAGNETIC NORTH CHANGES WEST 0°08' PER YEAR.

## NOTES:

- ▲ INDICATES FOUND SECTION CORNER
- INDICATES CALCULATED CORNER
- ELEVATION BASED ON NAVD88 (GEOID09)
- BASIS OF BEARING DERIVED FROM COLORADO COORDINATE SYSTEM 1983 NORTH ZONE UNLESS OTHERWISE NOTED.
- ALL MEASURED DISTANCES ARE GRID.  
COMBINED SCALE FACTOR: .99972680
- OPERATOR: ROB WILSON / PDOP = 1.7
- SEE ADDENDUM TO WELL LOCATION CERTIFICATE FOR EXISTING IMPROVEMENTS WITHIN 500' OF THE WELL PAD.
- WELL FOOTAGES ARE MEASURED AT RIGHT ANGLES TO THE SECTION LINES.
- THE BOTTOM OF HOLE BEARS N01°22'53"W, 5284' FROM THE SURFACE LOCATION.



## WELL PAD - STEWARD 35N-6HZ

STEWARD 14C-6HZ  
 WELL LOCATION CERTIFICATE  
 440' FSL & 1689' FWL SESW (SURFACE)  
 LOCATED IN SECTION 7  
 410' FSL & 1647' FWL SESW (BOTTOM)  
 LOCATED IN SECTION 6  
 T1N, R65W, 6TH P.M.  
 WELD COUNTY, COLORADO

**Kerr-McGee Oil &  
 Gas Onshore L.P.**  
 1099 18th Street  
 Denver, Colorado 80202



## CONSULTING, LLC

SHERIDAN OFFICE  
 2155 North Main Street  
 Sheridan, Wyoming 82801  
 Phone 307-674-0609

LOVELAND OFFICE  
 1635 Foxtrail Drive, Suite 204  
 Loveland, Colorado 80538  
 Phone 970-776-4331

DRAFTED BY:	APF	CHECKED BY:	BJR	SHEET NO:
DATE DRAFTED:	7/3/12	DATE SURVEYED:	6/10/12	1
REVISED:	3/21/14	FILE NAME:	12-59	1 OF 2

# T1N, R65W

**SURFACE LOCATION**  
GROUND ELEVATION= 5001.6'  
NAD 83  
LATITUDE= 40.059858°  
LONGITUDE= -104.709955°

LATITUDE= 40°03'35.490"  
LONGITUDE= -104°42'35.838"

**BOTTOM HOLE LOCATION**  
NAD 83  
LATITUDE= 40.074363°  
LONGITUDE= -104.710242°

LATITUDE= 40°04'27.707"  
LONGITUDE= -104°42'36.872"

W. 1/4 COR.  
SEC. 6, T1N, R65W  
FOUND 3 1/4" ALUM. CAP  
L.S. NO. 28283

S 88°36'04" W  
2636.01' (M)

S 88°36'20" W  
2672.48' (M)

E. 1/4 COR.  
SEC. 6, T1N, R65W  
FOUND 3 1/4" ALUM. CAP  
L.S. NO. 27269

6 CENTER 1/4 COR.  
SEC. 6, T1N, R65W  
SET ALUM. CAP  
L.S. NO. 38305

N 00°13'41" W 2598.40' (M)

N 01°22'53" W 5284' GRID  
N 00°52'15" W TRUE  
N 09°18'53" W MAGNETIC

2207'

N 00°09'54" W  
2628.96' (M)

BOTTOM OF HOLE:  
410' FSL & 1647' FWL

899'

334'

986'

S. 1/4 COR.  
SEC. 6, T1N, R65W  
FOUND 3 1/4" ALUM. CAP  
L.S. NO. 25937

SE. COR.  
SEC. 6, T1N, R65W  
FOUND 3 1/4" ALUM. CAP  
L.S. NO. 27269

SW. COR.  
SEC. 6, T1N, R65W  
FOUND 2" ALUM. CAP  
L.S. NO. 25937

S 89°15'53" W 2632.67' (M)

S 89°25'37" W 2640.09' (M)

MATCH LINE  
SEE SHEET 1

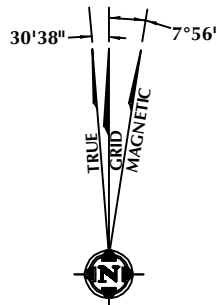
## CERTIFICATE OF SURVEYOR:

THIS IS TO CERTIFY THAT THE ABOVE PLAT WAS PREPARED FROM FIELD NOTES OF ACTUAL SURVEY MADE BY ME OR UNDER MY SUPERVISION AND THAT THE SAME ARE TRUE AND CORRECT TO THE BEST OF MY KNOWLEDGE AND BELIEF. THIS CERTIFICATE DOES NOT REPRESENT A LAND SURVEY PLAT OR IMPROVEMENT SURVEY PLAT AS DEFINED BY C.S. 38-51-102 AND CANNOT BE RELIED UPON TO DETERMINE OWNERSHIP.

*Benjamin J. Reenders*  
BENJAMIN J. REENDERS  
PROFESSIONAL LAND SURVEYOR  
COLORADO REGISTRATION NUMBER 48365

3/21/14

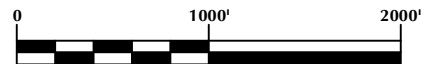
NOTICE:  
ACCORDING TO COLORADO STATE LAW YOU MUST COMMENCE ANY LEGAL ACTION BASED UPON ANY DEFECT IN THIS SURVEY WITHIN THREE YEARS AFTER YOU FIRST DISCOVER SUCH DEFECT. IN NO EVENT MAY ANY ACTION BASED UPON ANY DEFECT IN THIS SURVEY BE COMMENCED MORE THAN TEN YEARS FROM THE DATE ON THE CERTIFICATION SHOWN HEREON.



NOTE:  
MAGNETIC NORTH IS CURRENT AS OF 3/18/2014.  
MAGNETIC NORTH CHANGES WEST 0°08' PER YEAR.

## NOTES:

- ▲ INDICATES FOUND SECTION CORNER
- INDICATES CALCULATED CORNER
- ELEVATION BASED ON NAVD88 (GEOID09)
- BASIS OF BEARING DERIVED FROM COLORADO COORDINATE SYSTEM 1983 NORTH ZONE UNLESS OTHERWISE NOTED.
- ALL MEASURED DISTANCES ARE GRID.  
COMBINED SCALE FACTOR: .99972680
- OPERATOR: ROB WILSON / PDOP = 1.7
- SEE ADDENDUM TO WELL LOCATION CERTIFICATE FOR EXISTING IMPROVEMENTS WITHIN 500' OF THE WELL PAD.
- WELL FOOTAGES ARE MEASURED AT RIGHT ANGLES TO THE SECTION LINES.
- THE BOTTOM OF HOLE BEARS N01°22'53"W, 5284' FROM THE SURFACE LOCATION.



## WELL PAD - STEWARD 35N-6HZ

STEWARD 14C-6HZ  
WELL LOCATION CERTIFICATE  
440' FSL & 1689' FWL SESW (SURFACE)  
LOCATED IN SECTION 7  
410' FSL & 1647' FWL SESW (BOTTOM)  
LOCATED IN SECTION 6  
T1N, R65W, 6TH P.M.  
WELD COUNTY, COLORADO

**Kerr-McGee Oil &  
Gas Onshore L.P.**  
1099 18th Street  
Denver, Colorado 80202



## CONSULTING, LLC

SHERIDAN OFFICE  
2155 North Main Street  
Sheridan, Wyoming 82801  
Phone 307-674-0609

LOVELAND OFFICE  
1635 Foxtrail Drive, Suite 204  
Loveland, Colorado 80538  
Phone 970-776-4331

DRAFTED BY:	APF	CHECKED BY:	BJR	SHEET NO:
DATE DRAFTED:	7/3/12	DATE SURVEYED:	6/10/12	2
REVISED:	3/21/14	FILE NAME:	12-59	2 OF 2