

**ANADARKO PETROLEUM CORP - EBUS
DO NOT MAIL - PO BOX 4995
THE WOODLANDS, Texas**

Elliott 32N-18 HZ

Majors 42

Post Job Summary **Cement Surface Casing**

Date Prepared: 2/27/2014
Version: 1

Service Supervisor: SMITH, AARON

Submitted by: PRUDHOMME, JOSHUA

HALLIBURTON

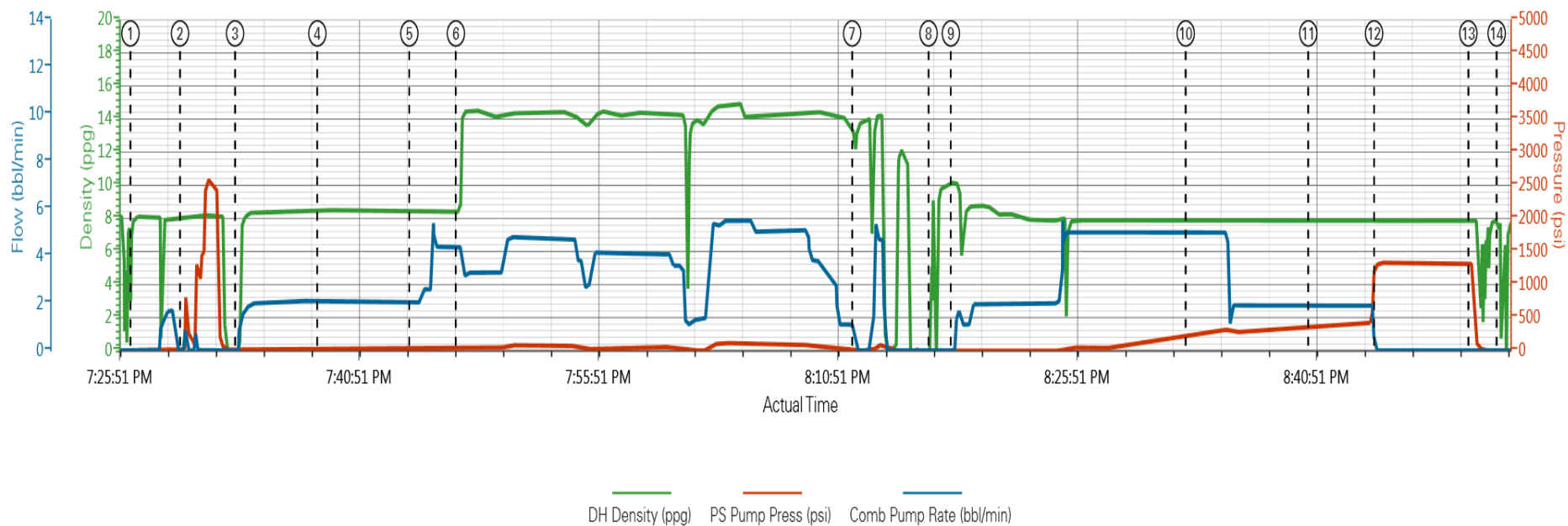
Pumping Schedule

Stage /Plug #	Fluid #	Fluid Type	Fluid Name	Surface Density lbm/gal	Avg Rate bbl/min	Surface Volume	Downhole Volume
1	1	Spacer	Fresh Water Spacer	8.33	2.0	10.0 bbl	10.0 bbl
1	2	Spacer	MUD FLUSH	8.50	2.0	12.0 bbl	12.0 bbl
1	1	Spacer	Fresh Water Spacer	8.33	4.0	10.0 bbl	10.0 bbl
1	3	Cement Slurry	SwiftCem B2	14.2	5.0	401.0 sacks	401.0 sacks

HALLIBURTON

Data Acquisition

ANADARKO PETROLEUM ELLIOT 32N-18HZ SURFACE



① Start Job 7.9;-2;0	④ Pump Spacer 2 8.4;26;2.1	⑦ Shutdown 12.59;6;0	⑩ Spacer Returns to Surface 7.83;221;5	⑬ Check Floats 7.85;1320;0
② Test Lines 8.13;11;0	⑤ Pump Spacer 1 8.46;30;2.1	⑧ Drop Top Plug 0.05;-6;0	⑪ Cement Returns to Surface 7.92;358;1.9	⑭ End Job 7.54;0;0
③ Pump Spacer 1 -0.39;3;0	⑥ Pump Cement 8.4;64;4.4	⑨ Pump Displacement 10.17;-5;0	⑫ Bump Plug 7.84;1306;0	

▼ **HALLIBURTON** | iCem® Service

Created: 2014-02-20 15:45:34, Version: 3.0.121

Edit

Customer: ANADARKO PETROLEUM CORP -
EBUS

Job Date: 2/20/2014 6:49:34 PM

Well: ELLIOT 32N-18HZ

Representative: AARON SMITH

Sales Order #: 901133414

HALLIBURTON

Service Supervisor Reports

Job Log

Date/Time	Chart #	Activity Code	Pump Rate	Cum Vol	Pump		Pressure (psig)	Comments
02/20/2014 18:00		Arrive at Location from Service Center						WITH ALL EQUIPMENT AND MATERIALS, RIG STILL RUNNING CASING.
02/20/2014 18:05		Assessment Of Location Safety Meeting						HAZARD HUNT, WATER TEST.
02/20/2014 18:10		Pre-Rig Up Safety Meeting						RIG-UP JSA
02/20/2014 18:15		Rig-Up Equipment						
02/20/2014 18:25		Rig-Up Completed						
02/20/2014 18:30		Casing on Bottom						
02/20/2014 18:30		Circulate Well						
02/20/2014 19:00		Pre-Job Safety Meeting						WITH CUSTOMER REP AND RIG CREW
02/20/2014 19:26		Start Job						
02/20/2014 19:29		Test Lines						FRESH WATER WITH NO ADDITIVES
02/20/2014 19:33		Pump Spacer 1	2	10			95.0	FRESH WATER WITH NO ADDITIVES
02/20/2014 19:38		Pump Spacer 2	2	12			95.0	FRESH WATER WITH MUD FLUSH
02/20/2014 19:44		Pump Spacer 1	4	10			100.0	FRESH WATER WITH NO ADDITIVES
02/20/2014 19:47		Pump Cement	5	111			80.0	401 SKS SWIFTCEM B1 @ 14.2 PPG 1.55 YIELD, 7.68 GAL/SK
02/20/2014 20:11		Shutdown						
02/20/2014 20:16		Drop Top Plug						PRE-LOADED HWE TOP PLUG IN PLUG CONTAINER VERIFIED BY CUSTOMER REP
02/20/2014 20:18		Clean Lines						WASHED PUMPS AND LINES ON PLUG.
02/20/2014 20:23		Pump Displacement	5	79			380.0	FRESH WATER WITH NO ADDITIVES
02/20/2014 20:32		Spacer Returns to Surface						@37 BBLS DISPLACEMENT, 32 BBLS TO THE PIT
02/20/2014 20:40		Cement Returns to Surface						@69 BBLS DISPLACEMENT, 10 BBLS TO THE PIT
02/20/2014 20:44		Bump Plug	2	29			1326.0	FINAL CIRCULATING PRESSURE 380, 313 PSI TO LAND, 463 PSI TO LIFT,
02/20/2014 20:50		Check Floats						FLOATS HELD, BBLS BACK
02/20/2014 20:52		End Job						RIG DOWN JSA, JOURNEY MANAGMENT MEETING, THANKS AARON SMITH AND CREW

The Road to Excellence Starts with Safety

Sold To #: 300466	Ship To #: 3280151	Quote #:	Sales Order #: 901133414
Customer: ANADARKO PETROLEUM CORP - EBUS		Customer Rep: Hersh, Larry	
Well Name: Elliott		Well #: 32N-18 HZ	API/UWI #: 05-123-38784
Field:	City (SAP): PLATTEVILLE	County/Parish: Weld	State: Colorado
Contractor: Majors		Rig/Platform Name/Num: Majors 42	
Job Purpose: Cement Surface Casing			
Well Type: Development Well		Job Type: Cement Surface Casing	
Sales Person: FLING, MATTHEW	Srvc Supervisor: SMITH, AARON		MBU ID Emp #: 518187

Job Personnel

HES Emp Name	Exp Hrs	Emp #	HES Emp Name	Exp Hrs	Emp #	HES Emp Name	Exp Hrs	Emp #
DODSON, RICHARD Bryan	3.5	518192	GRIFFITHS, ZACHARY Sakae	3.5	551430	SMITH, AARON David	3.5	518187
TOWNSON, JUSTIN T	3.5	555407						

Equipment

HES Unit #	Distance-1 way	HES Unit #	Distance-1 way	HES Unit #	Distance-1 way	HES Unit #	Distance-1 way
10248062C	20 mile	10679720C	20 mile	11398490	20 mile	11562544C	20 mile
12010173	20 mile						

Job

Job Times

Formation Name				Date	Time	Time Zone
Formation Depth (MD)	Top	Bottom		Called Out	20 - Feb - 2014	14:30 MST
Form Type	BHST			On Location	20 - Feb - 2014	18:00 MST
Job depth MD	1062. ft	Job Depth TVD	1062. ft	Job Started	20 - Feb - 2014	19:26 MST
Water Depth		Wk Ht Above Floor	5. ft	Job Completed	20 - Feb - 2014	20:52 MST
Perforation Depth (MD)	From	To		Departed Loc	20 - Feb - 2014	21:30 MST

Fluid Data

Stage/Plug #: 1

Fluid #	Stage Type	Fluid Name	Qty	Qty uom	Mixing Density lbm/gal	Yield ft ³ /sk	Mix Fluid Gal/sk	Rate bbl/min	Total Mix Fluid Gal/sk
1	Fresh Water Spacer		10.00	bbl	8.33			2.0	
2	MUD FLUSH		12.00	bbl	8.5			2.0	
	42 gal/bbl	MUD FLUSH III - SBM (528788)							
	0.4 lbm/bbl	MUD FLUSH III, 40 LB SACK (101633304)							
	42 gal/bbl	FRESH WATER							
1	Fresh Water Spacer		10.00	bbl	8.33			4.0	
3	SwiftCem B2	SWIFTCM (TM) SYSTEM (452990)	401.0	sacks	14.2	1.54	7.66	5.0	7.66
	7.66 Gal	FRESH WATER							

Calculated Values

Pressures

Volumes

Displacement		Shut In: Instant		Lost Returns		Cement Slurry		Pad	
Top Of Cement		5 Min		Cement Returns	10.0	Actual Displacement	79.0	Treatment	
Frac Gradient		15 Min		Spacers	32.0	Load and Breakdown		Total Job	

Rates											
Circulating		Mixing		Displacement		Avg. Job					
Cement Left In Pipe	Amount	0 ft	Reason	Shoe Joint							
Frac Ring # 1 @	ID		Frac ring # 2 @	ID		Frac Ring # 3 @	ID		Frac Ring # 4 @	ID	
The Information Stated Herein Is Correct				Customer Representative Signature							

