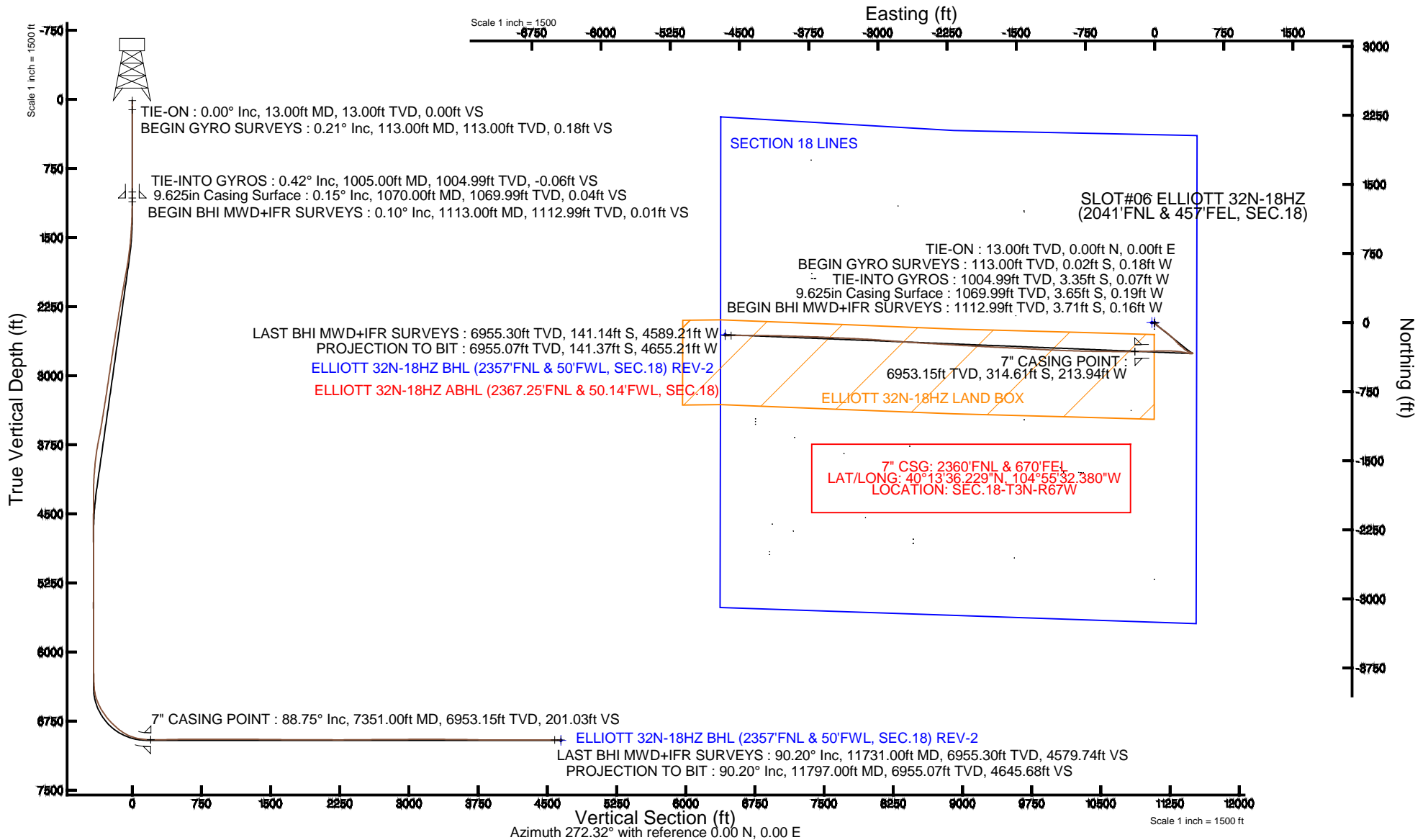


KERR-MCGEE OIL & GAS ONSHORE LP

Location: COLORADO Slot: SLOT#06 ELLIOTT 32N-18HZ (2041'FNL & 457'FEL, SEC.18)
Field: WELD COUNTY (KERR MCGEE) Well: ELLIOTT 32N-18HZ
Facility: SEC.18-T3N-R67W Wellbore: ELLIOTT 32N-18HZ PWP

Plot reference wellpath is ELLIOTT 32N-18HZ (REV-A.0) PWP

True vertical depths are referenced to ENSIGN 138 (RKB)	Grid System: NAD83 / Lambert Colorado SP, Northern Zone (501), US feet
Measured depths are referenced to ENSIGN 138 (RKB)	North Reference: True north
ENSIGN 138 (RKB) to Mean Sea Level: 4835 feet	Scale: True distance
Mean Sea Level to Mud line (At Slot: SLOT#06 ELLIOTT 32N-18HZ (2041'FNL & 457'FEL, SEC.18)): 0 feet	Depths are in feet
Coordinates are in feet referenced to Slot.	Created by: wilsjef02 on 4/30/2014





Actual Wellpath Report

ELLIOTT 32N-18HZ AWP

Page 1 of 6



REFERENCE WELLPATH IDENTIFICATION

Operator	KERR-MCGEE OIL & GAS ONSHORE LP	Slot	SLOT#06 ELLIOTT 32N-18HZ (2041'FNL & 457'FEL, SEC.18)
Area	COLORADO	Well	ELLIOTT 32N-18HZ
Field	WELD COUNTY (KERR MCGEE)	Wellbore	ELLIOTT 32N-18HZ AWB
Facility	SEC.18-T3N-R67W		

REPORT SETUP INFORMATION

Projection System	NAD83 / Lambert Colorado SP, Northern Zone (501), US feet	Software System	WellArchitect® 4.0.0
North Reference	True	User	Wilsjef02
Scale	0.999957	Report Generated	4/30/2014 at 1:41:41 PM
Convergence at slot	n/a	Database/Source file	WellArchitectDB/ELLIOTT_32N-18HZ_AWB.xml

WELLPATH LOCATION

	Local coordinates		Grid coordinates		Geographic coordinates	
	North[ft]	East[ft]	Easting[US ft]	Northing[US ft]	Latitude	Longitude
Slot Location	-173.29	2793.71	3160578.90	1326275.19	40°13'39.338"N	104°55'29.622"W
Facility Reference Pt			3157784.27	1326430.67	40°13'41.052"N	104°56'05.640"W
Field Reference Pt			3197771.84	1268891.29	40°04'09.600"N	104°47'36.000"W

WELLPATH DATUM

Calculation method	Minimum curvature	ENSIGN 138 (RKB) to Installation Vertical Datum	4835.00ft
Horizontal Reference Pt	Slot	ENSIGN 138 (RKB) to Mean Sea Level	4835.00ft
Vertical Reference Pt	ENSIGN 138 (RKB)	ENSIGN 138 (RKB) to Mud Line at Slot (SLOT#06 ELLIOTT 32N-18HZ (2041'FNL & 457'FEL, SEC.18))	4835.00ft
MD Reference Pt	ENSIGN 138 (RKB)	Section Origin	N 0.00, E 0.00 ft
Field Vertical Reference	Mean Sea Level	Section Azimuth	268.26°

Actual Wellpath Report

ELLIOTT 32N-18HZ AWP

Page 2 of 6

REFERENCE WELLPATH IDENTIFICATION			
Operator	KERR-MCGEE OIL & GAS ONSHORE LP	Slot	SLOT#06 ELLIOTT 32N-18HZ (2041'FNL & 457'FEL, SEC.18)
Area	COLORADO	Well	ELLIOTT 32N-18HZ
Field	WELD COUNTY (KERR MCGEE)	Wellbore	ELLIOTT 32N-18HZ AWP
Facility	SEC.18-T3N-R67W		

WELLPATH DATA (102 stations) † = interpolated/extrapolated station										
MD [ft]	Inclination [°]	Azimuth [°]	TVD [ft]	Vert Sect [ft]	North [ft]	East [ft]	Latitude	Longitude	DLS [°/100ft]	Comments
0.00†	0.000	262.360	0.00	0.00	0.00	0.00	40°13'39.338"N	104°55'29.622"W	0.00	
13.00	0.000	262.360	13.00	0.00	0.00	0.00	40°13'39.338"N	104°55'29.622"W	0.00	TIE-ON
113.00	0.210	262.360	113.00	0.18	-0.02	-0.18	40°13'39.338"N	104°55'29.624"W	0.21	BEGIN GYRO SURVEYS
213.00	0.270	227.120	213.00	0.54	-0.21	-0.54	40°13'39.336"N	104°55'29.629"W	0.16	
313.00	0.310	182.060	313.00	0.74	-0.64	-0.72	40°13'39.332"N	104°55'29.631"W	0.23	
413.00	0.160	99.710	413.00	0.62	-0.93	-0.59	40°13'39.329"N	104°55'29.630"W	0.33	
513.00	0.180	101.470	513.00	0.33	-0.99	-0.30	40°13'39.328"N	104°55'29.626"W	0.02	
613.00	0.300	149.670	613.00	0.05	-1.25	-0.01	40°13'39.326"N	104°55'29.622"W	0.22	
713.00	0.190	173.060	712.99	-0.09	-1.64	0.14	40°13'39.322"N	104°55'29.620"W	0.15	
813.00	0.410	172.420	812.99	-0.14	-2.16	0.21	40°13'39.317"N	104°55'29.619"W	0.22	
913.00	0.340	197.300	912.99	-0.08	-2.79	0.17	40°13'39.310"N	104°55'29.620"W	0.18	
1005.00	0.420	207.570	1004.99	0.17	-3.35	-0.07	40°13'39.305"N	104°55'29.623"W	0.11	TIE-INTO GYROS
1113.00	0.100	95.200	1112.99	0.27	-3.71	-0.16	40°13'39.301"N	104°55'29.624"W	0.43	BEGIN BHI MWD+IFR SURVEYS
1207.00	1.500	141.000	1206.98	-0.55	-4.68	0.70	40°13'39.292"N	104°55'29.613"W	1.52	
1301.00	2.900	135.200	1300.91	-2.92	-7.32	3.15	40°13'39.266"N	104°55'29.581"W	1.51	
1394.00	4.600	126.200	1393.70	-7.47	-11.19	7.81	40°13'39.227"N	104°55'29.521"W	1.93	
1488.00	6.000	136.700	1487.30	-13.70	-16.99	14.22	40°13'39.170"N	104°55'29.439"W	1.81	
1583.00	8.000	137.000	1581.59	-21.36	-25.44	22.14	40°13'39.087"N	104°55'29.337"W	2.11	
1674.00	9.300	133.000	1671.55	-30.76	-35.09	31.84	40°13'38.991"N	104°55'29.212"W	1.57	
1766.00	11.200	127.000	1762.08	-43.01	-45.54	44.41	40°13'38.888"N	104°55'29.049"W	2.37	
1858.00	12.700	129.300	1852.09	-57.60	-57.32	59.37	40°13'38.772"N	104°55'28.857"W	1.71	
1950.00	12.500	126.700	1941.87	-73.03	-69.68	75.18	40°13'38.649"N	104°55'28.653"W	0.65	
2133.00	11.400	122.300	2120.91	-103.53	-91.18	106.35	40°13'38.437"N	104°55'28.251"W	0.78	
2225.00	12.000	129.900	2211.00	-118.21	-102.17	121.37	40°13'38.328"N	104°55'28.057"W	1.80	
2408.00	11.300	129.200	2390.23	-145.98	-125.71	149.86	40°13'38.096"N	104°55'27.690"W	0.39	
2591.00	12.100	132.000	2569.43	-173.38	-149.87	178.01	40°13'37.857"N	104°55'27.327"W	0.54	
2774.00	11.600	135.500	2748.53	-199.73	-175.83	205.16	40°13'37.600"N	104°55'26.977"W	0.48	
2956.00	12.400	136.700	2926.55	-225.11	-203.10	231.39	40°13'37.331"N	104°55'26.639"W	0.46	
3140.00	10.900	135.100	3106.76	-250.12	-229.80	257.22	40°13'37.067"N	104°55'26.306"W	0.83	
3325.00	11.700	130.000	3288.17	-276.08	-254.25	283.93	40°13'36.825"N	104°55'25.961"W	0.69	
3514.00	11.200	130.800	3473.41	-303.91	-278.56	312.51	40°13'36.585"N	104°55'25.593"W	0.28	
3609.00	12.500	132.000	3566.38	-318.13	-291.47	327.13	40°13'36.458"N	104°55'25.404"W	1.39	
3703.00	13.100	120.900	3658.06	-334.46	-303.75	343.84	40°13'36.336"N	104°55'25.189"W	2.69	
3798.00	11.500	118.800	3750.88	-351.68	-313.84	361.37	40°13'36.237"N	104°55'24.963"W	1.75	
3892.00	8.400	110.300	3843.46	-366.12	-320.74	376.03	40°13'36.168"N	104°55'24.774"W	3.64	
3987.00	6.100	107.600	3937.69	-377.32	-324.68	387.35	40°13'36.130"N	104°55'24.628"W	2.45	
4081.00	4.700	104.000	4031.27	-385.74	-327.12	395.85	40°13'36.105"N	104°55'24.519"W	1.53	
4176.00	3.200	83.500	4126.05	-392.12	-327.76	402.26	40°13'36.099"N	104°55'24.436"W	2.14	
4271.00	0.600	44.100	4220.99	-395.12	-327.10	405.24	40°13'36.106"N	104°55'24.397"W	2.91	
4555.00	0.800	30.200	4504.97	-397.24	-324.32	407.27	40°13'36.133"N	104°55'24.371"W	0.09	
4650.00	1.100	16.900	4599.96	-397.88	-322.87	407.87	40°13'36.147"N	104°55'24.364"W	0.39	
4745.00	0.900	203.600	4694.95	-397.85	-322.69	407.84	40°13'36.149"N	104°55'24.364"W	2.10	
4839.00	1.000	197.400	4788.94	-397.27	-324.15	407.30	40°13'36.135"N	104°55'24.371"W	0.15	
4933.00	0.600	190.800	4882.93	-396.89	-325.41	406.96	40°13'36.122"N	104°55'24.375"W	0.44	
5123.00	0.800	195.500	5072.92	-396.28	-327.67	406.42	40°13'36.100"N	104°55'24.382"W	0.11	

Actual Wellpath Report

ELLIOTT 32N-18HZ AWP

Page 3 of 6

REFERENCE WELLPATH IDENTIFICATION			
Operator	KERR-MCGEE OIL & GAS ONSHORE LP	Slot	SLOT#06 ELLIOTT 32N-18HZ (2041'FNL & 457'FEL, SEC.18)
Area	COLORADO	Well	ELLIOTT 32N-18HZ
Field	WELD COUNTY (KERR MCGEE)	Wellbore	ELLIOTT 32N-18HZ AWB
Facility	SEC.18-T3N-R67W		

WELLPATH DATA (102 stations) † = interpolated/extrapolated station

MD [ft]	Inclination [°]	Azimuth [°]	TVD [ft]	Vert Sect [ft]	North [ft]	East [ft]	Latitude	Longitude	DLS [°/100ft]	Comments
5312.00	0.700	173.000	5261.90	-396.00	-330.08	406.21	40°13'36.076"N	104°55'24.385"W	0.16	
5501.00	0.400	129.100	5450.89	-396.60	-331.65	406.86	40°13'36.061"N	104°55'24.377"W	0.26	
5595.00	1.100	202.000	5544.89	-396.49	-332.69	406.78	40°13'36.050"N	104°55'24.378"W	1.12	
5690.00	0.700	182.500	5639.87	-396.08	-334.11	406.41	40°13'36.036"N	104°55'24.382"W	0.52	
5786.00	0.600	199.400	5735.87	-395.85	-335.17	406.22	40°13'36.026"N	104°55'24.385"W	0.22	
5975.00	0.300	169.400	5924.86	-395.57	-336.59	405.98	40°13'36.012"N	104°55'24.388"W	0.20	
6070.00	0.100	201.700	6019.86	-395.58	-336.92	405.99	40°13'36.009"N	104°55'24.388"W	0.23	
6164.00	0.300	113.600	6113.86	-395.77	-337.09	406.19	40°13'36.007"N	104°55'24.385"W	0.33	
6259.00	1.700	254.100	6208.85	-394.63	-337.58	405.06	40°13'36.002"N	104°55'24.400"W	2.04	
6353.00	1.500	252.500	6302.81	-392.09	-338.33	402.55	40°13'35.995"N	104°55'24.432"W	0.22	
6446.00	4.900	271.100	6395.65	-386.95	-338.62	397.41	40°13'35.992"N	104°55'24.498"W	3.78	
6541.00	15.900	279.500	6488.95	-370.08	-336.39	380.47	40°13'36.014"N	104°55'24.717"W	11.66	
6635.00	26.200	283.100	6576.57	-337.31	-329.54	347.47	40°13'36.081"N	104°55'25.142"W	11.04	
6729.00	34.600	280.700	6657.57	-291.10	-319.86	300.95	40°13'36.177"N	104°55'25.742"W	9.03	
6824.00	40.100	275.100	6733.09	-234.32	-312.13	243.91	40°13'36.254"N	104°55'26.477"W	6.80	
6918.00	47.700	272.000	6800.78	-169.47	-308.22	178.91	40°13'36.292"N	104°55'27.315"W	8.40	
7013.00	53.600	270.300	6860.99	-96.14	-306.79	105.50	40°13'36.306"N	104°55'28.262"W	6.36	
7108.00	67.300	267.800	6907.73	-13.71	-308.28	23.08	40°13'36.292"N	104°55'29.324"W	14.60	
7202.00	76.800	267.900	6936.67	75.61	-311.63	-66.18	40°13'36.259"N	104°55'30.475"W	10.11	
7294.00	85.900	269.200	6950.49	166.47	-313.91	-157.01	40°13'36.236"N	104°55'31.646"W	9.99	
7351.00†	88.750	269.394	6953.15	223.39	-314.61	-213.94	40°13'36.229"N	104°55'32.380"W	5.01	7" CASING POINT
7382.00	90.300	269.500	6953.41	254.38	-314.91	-244.93	40°13'36.226"N	104°55'32.780"W	5.01	
7445.00	90.900	270.300	6952.75	317.35	-315.02	-307.93	40°13'36.225"N	104°55'33.592"W	1.59	
7635.00	91.300	270.600	6949.10	507.18	-313.53	-497.89	40°13'36.240"N	104°55'36.041"W	0.26	
7729.00	90.100	270.800	6947.95	601.08	-312.38	-591.87	40°13'36.251"N	104°55'37.253"W	1.29	
7824.00	90.500	270.600	6947.46	695.99	-311.22	-686.86	40°13'36.262"N	104°55'38.477"W	0.47	
7919.00	89.900	271.400	6947.13	790.88	-309.56	-781.85	40°13'36.279"N	104°55'39.702"W	1.05	
8108.00	89.400	272.300	6948.28	979.51	-303.46	-970.74	40°13'36.339"N	104°55'42.137"W	0.54	
8297.00	90.600	272.600	6948.28	1168.00	-295.38	-1159.57	40°13'36.419"N	104°55'44.572"W	0.65	
8486.00	89.300	273.200	6948.44	1356.37	-285.82	-1348.32	40°13'36.513"N	104°55'47.005"W	0.76	
8676.00	89.400	272.700	6950.60	1545.73	-276.04	-1538.06	40°13'36.610"N	104°55'49.451"W	0.27	
8865.00	90.000	272.900	6951.59	1734.13	-266.81	-1726.83	40°13'36.701"N	104°55'51.885"W	0.33	
9055.00	89.800	272.900	6951.92	1923.51	-257.20	-1916.58	40°13'36.796"N	104°55'54.331"W	0.11	
9244.00	89.400	273.200	6953.24	2111.84	-247.14	-2105.31	40°13'36.895"N	104°55'56.765"W	0.26	
9433.00	90.200	273.500	6953.90	2300.09	-236.10	-2293.98	40°13'37.004"N	104°55'59.197"W	0.45	
9717.00	90.700	273.600	6951.67	2582.87	-218.51	-2577.43	40°13'37.177"N	104°56'02.851"W	0.18	
9905.00	90.100	274.200	6950.36	2769.96	-205.73	-2764.99	40°13'37.304"N	104°56'05.269"W	0.45	
10000.00	90.600	274.600	6949.78	2864.41	-198.44	-2859.70	40°13'37.375"N	104°56'06.491"W	0.67	
10095.00	90.200	274.000	6949.11	2958.88	-191.31	-2954.43	40°13'37.446"N	104°56'07.712"W	0.76	
10190.00	90.900	273.700	6948.20	3053.42	-184.94	-3049.22	40°13'37.509"N	104°56'08.934"W	0.80	
10285.00	90.200	273.100	6947.29	3148.04	-179.30	-3144.04	40°13'37.564"N	104°56'10.156"W	0.97	
10380.00	89.500	273.300	6947.54	3242.68	-174.00	-3238.89	40°13'37.616"N	104°56'11.379"W	0.77	
10474.00	89.700	271.900	6948.20	3336.41	-169.74	-3332.79	40°13'37.658"N	104°56'12.590"W	1.50	
10568.00	89.300	272.600	6949.02	3430.18	-166.05	-3426.72	40°13'37.695"N	104°56'13.801"W	0.86	
10664.00	89.500	272.700	6950.02	3525.89	-161.61	-3522.61	40°13'37.739"N	104°56'15.037"W	0.23	

Actual Wellpath Report

ELLIOTT 32N-18HZ AWP

Page 4 of 6

REFERENCE WELLPATH IDENTIFICATION

Operator	KERR-MCGEE OIL & GAS ONSHORE LP	Slot	SLOT#06 ELLIOTT 32N-18HZ (2041'FNL & 457'FEL, SEC.18)
Area	COLORADO	Well	ELLIOTT 32N-18HZ
Field	WELD COUNTY (KERR MCGEE)	Wellbore	ELLIOTT 32N-18HZ AWB
Facility	SEC.18-T3N-R67W		

WELLPATH DATA (102 stations)

MD [ft]	Inclination [°]	Azimuth [°]	TVD [ft]	Vert Sect [ft]	North [ft]	East [ft]	Latitude	Longitude	DLS [°/100ft]	Comments
10758.00	89.300	272.300	6951.01	3619.63	-157.51	-3616.51	40°13'37.779"N	104°56'16.248"W	0.48	
10851.00	88.700	271.500	6952.63	3712.42	-154.42	-3709.45	40°13'37.809"N	104°56'17.446"W	1.08	
10945.00	89.100	272.100	6954.43	3806.23	-151.47	-3803.38	40°13'37.838"N	104°56'18.657"W	0.77	
11040.00	89.500	271.800	6955.59	3901.02	-148.24	-3898.32	40°13'37.870"N	104°56'19.881"W	0.53	
11134.00	90.500	271.900	6955.59	3994.84	-145.21	-3992.27	40°13'37.900"N	104°56'21.092"W	1.07	
11228.00	90.200	271.200	6955.02	4088.68	-142.66	-4086.23	40°13'37.925"N	104°56'22.304"W	0.81	
11323.00	89.500	270.700	6955.27	4183.57	-141.09	-4181.22	40°13'37.940"N	104°56'23.528"W	0.91	
11417.00	90.200	270.000	6955.51	4277.51	-140.51	-4275.21	40°13'37.946"N	104°56'24.740"W	1.05	
11512.00	89.900	270.100	6955.43	4372.46	-140.43	-4370.21	40°13'37.946"N	104°56'25.965"W	0.33	
11607.00	90.000	269.700	6955.51	4467.42	-140.60	-4465.21	40°13'37.945"N	104°56'27.190"W	0.43	
11731.00	90.200	269.800	6955.30	4591.38	-141.14	-4589.21	40°13'37.939"N	104°56'28.788"W	0.18	LAST BHI MWD+IFR SURVEYS
11797.00	90.200	269.800	6955.07	4657.36	-141.37	-4655.21	40°13'37.937"N	104°56'29.639"W	0.00	PROJECTION TO BIT

HOLE & CASING SECTIONS - Ref Wellbore: ELLIOTT 32N-18HZ AWB Ref Wellpath: ELLIOTT 32N-18HZ AWP

String/Diameter	Start MD [ft]	End MD [ft]	Interval [ft]	Start TVD [ft]	End TVD [ft]	Start N/S [ft]	Start E/W [ft]	End N/S [ft]	End E/W [ft]
13.5in Open Hole	13.00	1070.00	1057.00	13.00	1069.99	0.00	0.00	-3.65	-0.19
9.625in Casing Surface	13.00	1070.00	1057.00	13.00	1069.99	0.00	0.00	-3.65	-0.19
8.75in Open Hole	1070.00	7358.00	6288.00	1069.99	6953.28	-3.65	-0.19	-314.68	-220.94
7in Casing Intermediate	13.00	7351.00	7338.00	13.00	6953.15	0.00	0.00	-314.61	-213.94
6.125in Open Hole	7351.00	11797.00	4446.00	6953.15	6955.07	-314.61	-213.94	-141.37	-4655.21

Actual Wellpath Report

ELLIOTT 32N-18HZ AWP

Page 5 of 6

REFERENCE WELLPATH IDENTIFICATION

Operator	KERR-MCGEE OIL & GAS ONSHORE LP	Slot	SLOT#06 ELLIOTT 32N-18HZ (2041'FNL & 457'FEL, SEC.18)
Area	COLORADO	Well	ELLIOTT 32N-18HZ
Field	WELD COUNTY (KERR MCGEE)	Wellbore	ELLIOTT 32N-18HZ AWB
Facility	SEC.18-T3N-R67W		

TARGETS

Name	MD [ft]	TVD [ft]	North [ft]	East [ft]	Grid East [US ft]	Grid North [US ft]	Latitude	Longitude	Shape
ELLIOTT 32N-18HZ BHL (2357'FNL & 50'FWL, SEC.18) REV-2		6959.00	-131.12	-4655.07	3155924.99	1326113.89	40°13'38.038"N	104°56'29.637"W	point
ELLIOTT 32N-18HZ BHL ON PLAT (2252'FNL & 50'FWL, SEC.18) REV-1		6959.00	-26.12	-4655.07	3155924.31	1326218.89	40°13'39.076"N	104°56'29.638"W	point
ELLIOTT 32N-18HZ LAND BOX		7000.00	0.00	0.00	3160578.90	1326275.19	40°13'39.338"N	104°55'29.622"W	polygon
ELLIOTT 5C-18HZ SECTION 18 LINES		7210.00	0.81	-29.86	3160549.04	1326275.81	40°13'39.346"N	104°55'30.007"W	polygon

WELLPATH COMPOSITION - Ref Wellbore: ELLIOTT 32N-18HZ AWB Ref Wellpath: ELLIOTT 32N-18HZ AWP

Start MD [ft]	End MD [ft]	Positional Uncertainty Model	Log Name/Comment	Wellbore
13.00	1005.00	Generic gyro - continuous (Standard)	MS ENERGY GYRODATA SURVEYS <113-1005>	ELLIOTT 32N-18HZ AWB
1005.00	7294.00	NaviTrak (IFR)	BHI MWD+IFR SURVEYS 8 3/4" HOLE <1113-7294>	ELLIOTT 32N-18HZ AWB
7294.00	11731.00	NaviTrak (IFR)	BHI MWD+IFR SURVEYS 6 1/8" HOLE <7382-11731>	ELLIOTT 32N-18HZ AWB
11731.00	11797.00	Blind Drilling (std)	Projection to bit	ELLIOTT 32N-18HZ AWB



Actual Wellpath Report

ELLIOTT 32N-18HZ AWP

Page 6 of 6



REFERENCE WELLPATH IDENTIFICATION

Operator	KERR-MCGEE OIL & GAS ONSHORE LP	Slot	SLOT#06 ELLIOTT 32N-18HZ (2041'FNL & 457'FEL, SEC.18)
Area	COLORADO	Well	ELLIOTT 32N-18HZ
Field	WELD COUNTY (KERR MCGEE)	Wellbore	ELLIOTT 32N-18HZ AWB
Facility	SEC.18-T3N-R67W		

WELLPATH COMMENTS

MD [ft]	Inclination [°]	Azimuth [°]	TVD [ft]	Comment
13.00	0.000	262.360	13.00	TIE-ON
113.00	0.210	262.360	113.00	BEGIN GYRO SURVEYS
1005.00	0.420	207.570	1004.99	TIE-INTO GYROS
1113.00	0.100	95.200	1112.99	BEGIN BHI MWD+IFR SURVEYS
7351.00	88.750	269.394	6953.15	7" CASING POINT
11731.00	90.200	269.800	6955.30	LAST BHI MWD+IFR SURVEYS
11797.00	90.200	269.800	6955.07	PROJECTION TO BIT