

# BONANZA CREEK OIL COMPANY

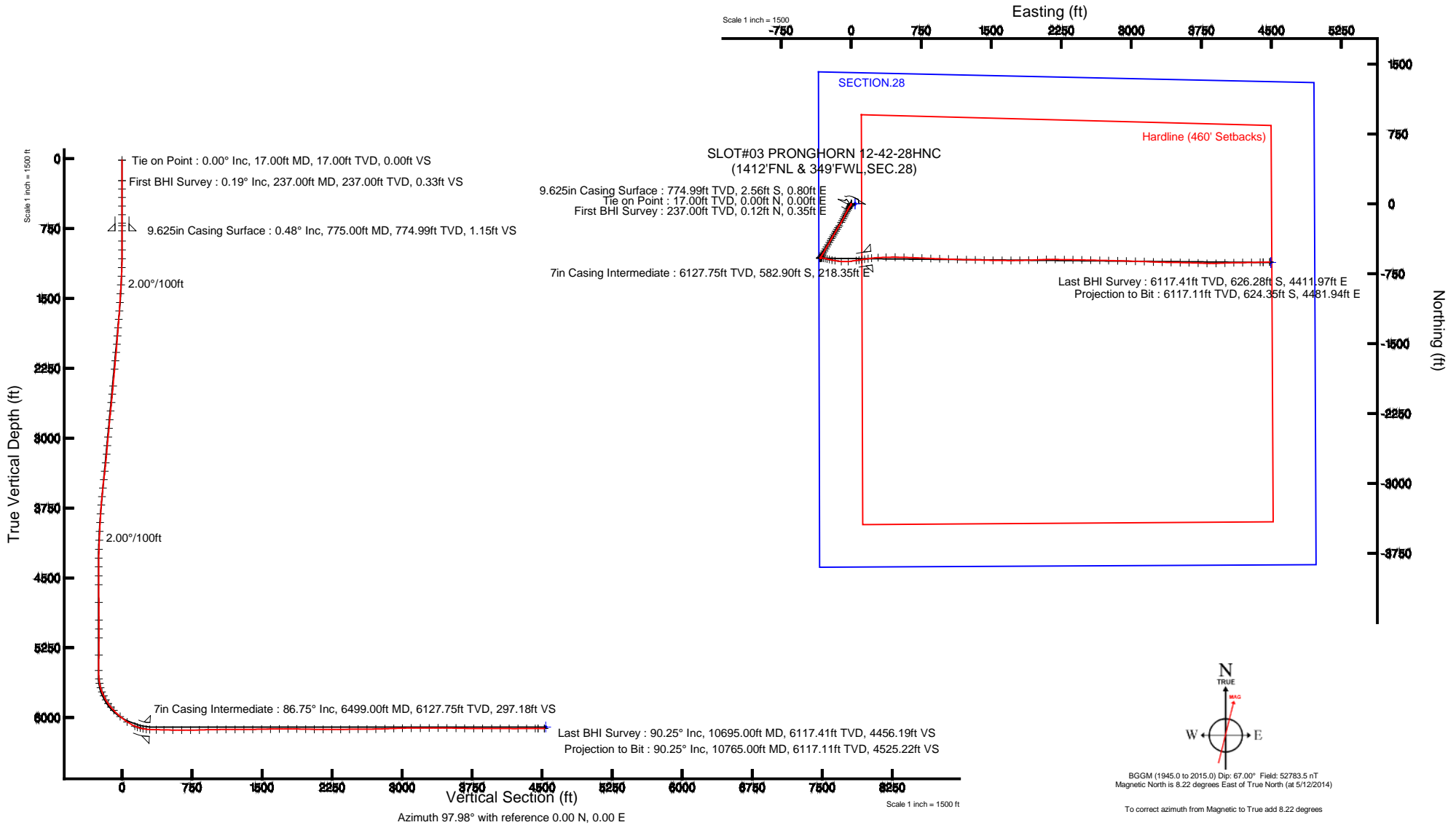
Location: COLORADO Slot: SLOT#03 PRONGHORN 12-42-28HNC (1412'FNL & 349'FWL,SEC.28)  
Field: WELD COUNTY Well: PRONGHORN 12-42-28HNC  
Facility: SEC.28-T5N-R61W Wellbore: PRONGHORN 12-42-28HNC PWB

Plot reference wellpath is PRONGHORN 12-42-28HNC (REV-B.0) PWP

True vertical depths are referenced to RIG (RKB)	Grid System: NAD83 / Lambert Colorado SP, Northern Zone (501), US feet
Measured depths are referenced to RIG (RKB)	North Reference: True north
RIG (RKB) to Mean Sea Level: 4633 feet	Scale: True distance
Mean Sea Level to Mud line (At Slot: SLOT#03 PRONGHORN 12-42-28HNC (1412'FNL & 349'FWL,SEC.28)): 0 feet	Depths are in feet
Coordinates are in feet referenced to Slot	Created by: guenaler on 5/12/2014

## Location Information

Facility Name			Grid East (US ft)	Grid North (US ft)	Latitude	Longitude
SEC.28-T5N-R61W			3355992.408	1382119.916	40°22'31.008"N	104°13'19.992"W
Slot	Local N (ft)	Local E (ft)	Grid East (US ft)	Grid North (US ft)	Latitude	Longitude
SLOT#03 PRONGHORN 12-42-28HNC (1412'FNL & 349'FWL,SEC.28)	0.00	-41.79	3355950.620	1382119.314	40°22'31.008"N	104°13'20.532"W
RIG (RKB) to Mud line (At Slot: SLOT#03 PRONGHORN 12-42-28HNC (1412'FNL & 349'FWL,SEC.28))					4633ft	
Mean Sea Level to Mud line (At Slot: SLOT#03 PRONGHORN 12-42-28HNC (1412'FNL & 349'FWL,SEC.28))					0ft	
RIG (RKB) to Mean Sea Level					4633ft	





# Actual Wellpath Report

PRONGHORN 12-42-28HNC AWP

Page 1 of 7



## REFERENCE WELLPATH IDENTIFICATION

Operator	BONANZA CREEK OIL COMPANY	Slot	SLOT#03 PRONGHORN 12-42-28HNC (1412'FNL & 349'FWL,SEC.28)
Area	COLORADO	Well	PRONGHORN 12-42-28HNC
Field	WELD COUNTY	Wellbore	PRONGHORN 12-42-28HNC AWB
Facility	SEC.28-T5N-R61W		

## REPORT SETUP INFORMATION

Projection System	NAD83 / Lambert Colorado SP, Northern Zone (501), US feet	Software System	WellArchitect® 4.0.0
North Reference	True	User	Guenaler
Scale	0.999959	Report Generated	5/12/2014 at 1:57:50 PM
Convergence at slot	n/a	Database/Source file	WA_Denver/PRONGHORN_12-42-28HNC_AWB.xml

## WELLPATH LOCATION

	Local coordinates		Grid coordinates		Geographic coordinates	
	North[ft]	East[ft]	Easting[US ft]	Northing[US ft]	Latitude	Longitude
Slot Location	0.00	-41.79	3355950.62	1382119.31	40°22'31.008"N	104°13'20.532"W
Facility Reference Pt			3355992.41	1382119.92	40°22'31.008"N	104°13'19.992"W
Field Reference Pt			3327718.19	1377782.99	40°21'52.020"N	104°19'26.040"W

## WELLPATH DATUM

Calculation method	Minimum curvature	RIG (RKB) to Facility Vertical Datum	4633.00ft
Horizontal Reference Pt	Slot	RIG (RKB) to Mean Sea Level	4633.00ft
Vertical Reference Pt	RIG (RKB)	RIG (RKB) to Mud Line at Slot (SLOT#03 PRONGHORN 12-42-28HNC (1412'FNL & 349'FWL,SEC.28))	4633.00ft
MD Reference Pt	RIG (RKB)	Section Origin	N 0.00, E 0.00 ft
Field Vertical Reference	Mean Sea Level	Section Azimuth	97.93°



# Actual Wellpath Report

PRONGHORN 12-42-28HNC AWP

Page 2 of 7



REFERENCE WELLPATH IDENTIFICATION			
Operator	BONANZA CREEK OIL COMPANY	Slot	SLOT#03 PRONGHORN 12-42-28HNC (1412'FNL & 349'FWL,SEC.28)
Area	COLORADO	Well	PRONGHORN 12-42-28HNC
Field	WELD COUNTY	Wellbore	PRONGHORN 12-42-28HNC AWP
Facility	SEC.28-T5N-R61W		

## WELLPATH DATA (117 stations) † = interpolated/extrapolated station

MD [ft]	Inclination [°]	Azimuth [°]	TVD [ft]	Vert Sect [ft]	North [ft]	East [ft]	Latitude	Longitude	DLS [°/100ft]	Comments
0.00†	0.000	71.280	0.00	0.00	0.00	0.00	40°22'31.008"N	104°13'20.532"W	0.00	
17.00	0.000	71.280	17.00	0.00	0.00	0.00	40°22'31.008"N	104°13'20.532"W	0.00	Tie on Point
237.00	0.190	71.280	237.00	0.33	0.12	0.35	40°22'31.009"N	104°13'20.528"W	0.09	First BHI Survey
328.00	0.130	27.860	328.00	0.50	0.26	0.54	40°22'31.011"N	104°13'20.525"W	0.14	
418.00	0.210	173.010	418.00	0.57	0.18	0.60	40°22'31.010"N	104°13'20.524"W	0.36	
510.00	0.590	186.320	510.00	0.63	-0.45	0.57	40°22'31.004"N	104°13'20.525"W	0.42	
601.00	0.440	176.050	600.99	0.72	-1.27	0.55	40°22'30.995"N	104°13'20.525"W	0.19	
692.00	0.380	176.090	691.99	0.85	-1.92	0.59	40°22'30.989"N	104°13'20.524"W	0.07	
719.00	0.490	155.340	718.99	0.93	-2.11	0.64	40°22'30.987"N	104°13'20.524"W	0.71	
884.00	0.500	187.340	883.98	1.32	-3.47	0.85	40°22'30.974"N	104°13'20.521"W	0.17	
979.00	1.670	193.200	978.97	1.19	-5.23	0.48	40°22'30.956"N	104°13'20.526"W	1.24	
1074.00	2.630	203.720	1073.90	0.47	-8.57	-0.72	40°22'30.923"N	104°13'20.541"W	1.09	
1169.00	4.130	211.600	1168.73	-1.49	-13.48	-3.38	40°22'30.875"N	104°13'20.576"W	1.65	
1263.00	5.890	217.300	1262.37	-5.22	-20.20	-8.08	40°22'30.808"N	104°13'20.636"W	1.94	
1357.00	7.000	218.090	1355.77	-10.46	-28.55	-14.54	40°22'30.726"N	104°13'20.720"W	1.18	
1453.00	8.410	212.360	1450.90	-16.30	-39.08	-21.90	40°22'30.622"N	104°13'20.815"W	1.67	
1547.00	9.930	208.860	1543.70	-22.04	-51.99	-29.50	40°22'30.494"N	104°13'20.913"W	1.72	
1640.00	10.940	209.400	1635.16	-28.14	-66.70	-37.70	40°22'30.349"N	104°13'21.019"W	1.09	
1732.00	12.290	208.250	1725.28	-34.73	-82.93	-46.62	40°22'30.189"N	104°13'21.134"W	1.49	
1823.00	12.880	207.200	1814.09	-41.44	-100.48	-55.84	40°22'30.015"N	104°13'21.253"W	0.70	
1915.00	14.030	205.720	1903.56	-48.23	-119.65	-65.37	40°22'29.826"N	104°13'21.377"W	1.30	
2006.00	14.200	205.670	1991.82	-55.00	-139.65	-74.99	40°22'29.628"N	104°13'21.501"W	0.19	
2097.00	13.860	209.500	2080.10	-62.41	-159.19	-85.19	40°22'29.435"N	104°13'21.633"W	1.09	
2190.00	14.460	210.180	2170.28	-70.90	-178.93	-96.51	40°22'29.240"N	104°13'21.779"W	0.67	
2282.00	13.750	209.060	2259.50	-79.19	-198.41	-107.60	40°22'29.047"N	104°13'21.922"W	0.83	
2468.00	13.250	210.790	2440.36	-95.44	-236.05	-129.25	40°22'28.675"N	104°13'22.202"W	0.35	
2559.00	14.280	212.190	2528.75	-104.11	-254.50	-140.57	40°22'28.493"N	104°13'22.348"W	1.19	
2651.00	14.560	211.180	2617.85	-113.33	-274.00	-152.60	40°22'28.300"N	104°13'22.504"W	0.41	
2745.00	13.930	210.280	2708.96	-122.30	-293.88	-164.42	40°22'28.104"N	104°13'22.656"W	0.71	
2841.00	14.820	209.980	2801.95	-131.30	-314.49	-176.38	40°22'27.900"N	104°13'22.811"W	0.93	



# Actual Wellpath Report

PRONGHORN 12-42-28HNC AWP

Page 3 of 7



REFERENCE WELLPATH IDENTIFICATION			
Operator	BONANZA CREEK OIL COMPANY	Slot	SLOT#03 PRONGHORN 12-42-28HNC (1412'FNL & 349'FWL,SEC.28)
Area	COLORADO	Well	PRONGHORN 12-42-28HNC
Field	WELD COUNTY	Wellbore	PRONGHORN 12-42-28HNC AWP
Facility	SEC.28-T5N-R61W		

## WELLPATH DATA (117 stations)

MD [ft]	Inclination [°]	Azimuth [°]	TVD [ft]	Vert Sect [ft]	North [ft]	East [ft]	Latitude	Longitude	DLS [°/100ft]	Comments
2937.00	13.150	209.230	2895.11	-139.88	-334.66	-187.85	40°22'27.701"N	104°13'22.959"W	1.75	
3033.00	12.820	214.850	2988.65	-148.67	-352.93	-199.27	40°22'27.520"N	104°13'23.107"W	1.36	
3127.00	13.950	206.240	3080.11	-156.95	-371.65	-210.24	40°22'27.335"N	104°13'23.248"W	2.43	
3223.00	14.810	209.930	3173.10	-165.18	-392.67	-221.48	40°22'27.128"N	104°13'23.394"W	1.31	
3319.00	16.130	209.480	3265.62	-174.68	-414.91	-234.16	40°22'26.908"N	104°13'23.557"W	1.38	
3414.00	16.760	210.400	3356.74	-184.76	-438.21	-247.59	40°22'26.678"N	104°13'23.731"W	0.72	
3508.00	17.420	211.310	3446.58	-195.52	-461.92	-261.76	40°22'26.443"N	104°13'23.914"W	0.76	
3601.00	15.640	207.630	3535.74	-205.27	-484.93	-274.81	40°22'26.216"N	104°13'24.083"W	2.22	
3696.00	14.230	211.750	3627.53	-214.31	-506.20	-286.89	40°22'26.006"N	104°13'24.239"W	1.86	
3789.00	12.050	208.830	3718.09	-222.39	-524.43	-297.59	40°22'25.826"N	104°13'24.377"W	2.45	
3885.00	9.880	208.730	3812.33	-228.89	-540.43	-306.38	40°22'25.668"N	104°13'24.491"W	2.26	
3980.00	8.040	210.790	3906.17	-234.36	-553.29	-313.70	40°22'25.541"N	104°13'24.585"W	1.97	
4076.00	6.250	212.940	4001.42	-239.18	-563.44	-319.98	40°22'25.440"N	104°13'24.666"W	1.88	
4172.00	4.560	216.840	4096.99	-243.23	-570.88	-325.11	40°22'25.367"N	104°13'24.733"W	1.80	
4268.00	3.110	222.930	4192.77	-246.57	-575.84	-329.17	40°22'25.318"N	104°13'24.785"W	1.57	
4364.00	1.870	231.150	4288.68	-249.14	-578.73	-332.16	40°22'25.289"N	104°13'24.824"W	1.34	
4457.00	1.140	183.420	4381.65	-250.11	-580.61	-333.40	40°22'25.271"N	104°13'24.840"W	1.49	
4553.00	0.570	166.750	4477.64	-249.86	-582.02	-333.35	40°22'25.257"N	104°13'24.839"W	0.64	
4648.00	0.490	139.730	4572.64	-249.38	-582.79	-332.98	40°22'25.249"N	104°13'24.834"W	0.27	
4838.00	0.370	81.180	4762.63	-248.19	-583.32	-331.85	40°22'25.244"N	104°13'24.820"W	0.23	
5029.00	0.550	38.460	4953.63	-247.13	-582.51	-330.67	40°22'25.252"N	104°13'24.804"W	0.20	
5124.00	0.430	37.090	5048.62	-246.73	-581.87	-330.17	40°22'25.258"N	104°13'24.798"W	0.13	
5218.00	0.770	221.910	5142.62	-246.91	-582.05	-330.38	40°22'25.256"N	104°13'24.801"W	1.28	
5405.00	0.610	230.300	5329.61	-248.28	-583.63	-331.98	40°22'25.241"N	104°13'24.821"W	0.10	
5570.00	0.730	229.440	5494.60	-249.57	-584.87	-333.46	40°22'25.228"N	104°13'24.840"W	0.07	
5660.00	4.430	73.990	5584.52	-246.77	-584.28	-330.55	40°22'25.234"N	104°13'24.803"W	5.67	
5708.00	10.760	78.880	5632.07	-240.84	-582.91	-324.36	40°22'25.248"N	104°13'24.723"W	13.24	
5755.00	16.270	87.990	5677.76	-230.20	-581.83	-313.47	40°22'25.259"N	104°13'24.582"W	12.53	
5803.00	21.920	97.750	5723.11	-214.60	-582.80	-297.86	40°22'25.249"N	104°13'24.380"W	13.48	
5850.00	25.220	102.060	5766.19	-195.83	-586.08	-279.37	40°22'25.217"N	104°13'24.141"W	7.92	



# Actual Wellpath Report

PRONGHORN 12-42-28HNC AWP

Page 4 of 7



REFERENCE WELLPATH IDENTIFICATION			
Operator	BONANZA CREEK OIL COMPANY	Slot	SLOT#03 PRONGHORN 12-42-28HNC (1412'FNL & 349'FWL,SEC.28)
Area	COLORADO	Well	PRONGHORN 12-42-28HNC
Field	WELD COUNTY	Wellbore	PRONGHORN 12-42-28HNC AWP
Facility	SEC.28-T5N-R61W		

WELLPATH DATA (117 stations)										
MD [ft]	Inclination [°]	Azimuth [°]	TVD [ft]	Vert Sect [ft]	North [ft]	East [ft]	Latitude	Longitude	DLS [°/100ft]	Comments
5898.00	30.010	104.940	5808.71	-173.70	-591.31	-257.75	40°22'25.165"N	104°13'23.862"W	10.36	
5945.00	35.080	102.520	5848.32	-148.56	-597.28	-233.20	40°22'25.106"N	104°13'23.545"W	11.14	
5993.00	38.890	102.760	5886.65	-119.78	-603.60	-205.02	40°22'25.043"N	104°13'23.181"W	7.94	
6041.00	43.890	99.590	5922.66	-88.11	-609.70	-173.90	40°22'24.983"N	104°13'22.779"W	11.29	
6136.00	48.900	95.060	5988.17	-19.39	-618.35	-105.71	40°22'24.898"N	104°13'21.898"W	6.30	
6231.00	56.500	86.210	6045.77	55.35	-618.89	-30.33	40°22'24.892"N	104°13'20.924"W	10.89	
6327.00	66.920	80.370	6091.24	136.92	-608.82	53.43	40°22'24.992"N	104°13'19.842"W	12.10	
6359.00	70.530	79.990	6102.85	165.32	-603.74	82.81	40°22'25.042"N	104°13'19.462"W	11.34	
6391.00	74.290	80.490	6112.51	194.37	-598.57	112.87	40°22'25.093"N	104°13'19.074"W	11.84	
6423.00	78.960	80.590	6119.91	224.07	-593.45	143.57	40°22'25.144"N	104°13'18.677"W	14.60	
6461.00	85.300	81.840	6125.12	260.11	-587.71	180.75	40°22'25.200"N	104°13'18.197"W	17.00	
6570.00	89.470	86.800	6130.09	365.88	-576.95	289.04	40°22'25.307"N	104°13'16.797"W	5.94	
6655.00	88.770	88.770	6131.40	449.54	-573.66	373.97	40°22'25.339"N	104°13'15.700"W	2.46	
6751.00	88.950	90.280	6133.31	544.49	-572.87	469.94	40°22'25.347"N	104°13'14.460"W	1.58	
6847.00	89.040	91.670	6134.99	639.76	-574.50	565.91	40°22'25.331"N	104°13'13.220"W	1.45	
6942.00	90.990	92.290	6134.97	734.25	-577.78	660.85	40°22'25.298"N	104°13'11.994"W	2.15	
7038.00	91.700	92.510	6132.71	829.77	-581.80	756.74	40°22'25.259"N	104°13'10.755"W	0.77	
7133.00	91.770	92.770	6129.84	924.32	-586.18	851.59	40°22'25.215"N	104°13'09.529"W	0.28	
7228.00	90.430	91.850	6128.01	1018.85	-590.00	946.49	40°22'25.178"N	104°13'08.303"W	1.71	
7324.00	90.590	92.110	6127.16	1114.32	-593.32	1042.43	40°22'25.145"N	104°13'07.063"W	0.32	
7420.00	90.060	91.800	6126.61	1209.80	-596.60	1138.37	40°22'25.112"N	104°13'05.824"W	0.64	
7516.00	90.310	91.570	6126.30	1305.23	-599.42	1234.33	40°22'25.084"N	104°13'04.584"W	0.35	
7611.00	90.310	91.040	6125.79	1399.59	-601.58	1329.31	40°22'25.063"N	104°13'03.357"W	0.56	
7707.00	91.360	91.660	6124.39	1494.95	-603.84	1425.27	40°22'25.041"N	104°13'02.117"W	1.27	
7802.00	90.620	91.110	6122.75	1589.32	-606.14	1520.22	40°22'25.018"N	104°13'00.890"W	0.97	
7898.00	90.310	90.610	6121.97	1684.58	-607.58	1616.21	40°22'25.004"N	104°12'59.650"W	0.61	
7993.00	90.310	89.980	6121.46	1778.74	-608.07	1711.21	40°22'24.999"N	104°12'58.423"W	0.66	
8088.00	88.630	88.490	6122.33	1872.64	-606.80	1806.19	40°22'25.011"N	104°12'57.195"W	2.36	
8183.00	89.350	88.360	6124.01	1966.32	-604.19	1901.14	40°22'25.037"N	104°12'55.969"W	0.77	
8278.00	88.820	87.620	6125.53	2059.88	-600.86	1996.07	40°22'25.070"N	104°12'54.742"W	0.96	



# Actual Wellpath Report

## PRONGHORN 12-42-28HNC AWP

Page 5 of 7



### REFERENCE WELLPATH IDENTIFICATION

Operator	BONANZA CREEK OIL COMPANY	Slot	SLOT#03 PRONGHORN 12-42-28HNC (1412'FNL & 349'FWL,SEC.28)
Area	COLORADO	Well	PRONGHORN 12-42-28HNC
Field	WELD COUNTY	Wellbore	PRONGHORN 12-42-28HNC AWB
Facility	SEC.28-T5N-R61W		

### WELLPATH DATA (117 stations)

MD [ft]	Inclination [°]	Azimuth [°]	TVD [ft]	Vert Sect [ft]	North [ft]	East [ft]	Latitude	Longitude	DLS [°/100ft]	Comments
8373.00	89.850	88.780	6126.63	2153.50	-597.88	2091.01	40°22'25.099"N	104°12'53.515"W	1.63	
8468.00	89.220	90.680	6127.40	2247.52	-597.43	2186.00	40°22'25.103"N	104°12'52.288"W	2.11	
8564.00	91.390	90.860	6126.89	2342.77	-598.72	2281.98	40°22'25.091"N	104°12'51.048"W	2.27	
8658.00	90.590	91.300	6125.26	2436.08	-600.49	2375.95	40°22'25.073"N	104°12'49.834"W	0.97	
8752.00	90.280	91.110	6124.55	2529.43	-602.47	2469.93	40°22'25.053"N	104°12'48.620"W	0.39	
8848.00	90.410	91.230	6123.97	2624.76	-604.43	2565.91	40°22'25.034"N	104°12'47.380"W	0.18	
8944.00	91.260	91.050	6122.57	2720.08	-606.34	2661.88	40°22'25.015"N	104°12'46.140"W	0.91	
9040.00	92.060	91.660	6119.79	2815.40	-608.60	2757.81	40°22'24.992"N	104°12'44.900"W	1.05	
9136.00	91.790	91.450	6116.57	2910.76	-611.21	2853.72	40°22'24.967"N	104°12'43.661"W	0.36	
9230.00	91.600	91.800	6113.79	3004.15	-613.87	2947.64	40°22'24.940"N	104°12'42.448"W	0.42	
9326.00	89.720	91.530	6112.68	3099.56	-616.66	3043.59	40°22'24.912"N	104°12'41.208"W	1.98	
9422.00	90.000	91.950	6112.92	3195.00	-619.58	3139.54	40°22'24.884"N	104°12'39.968"W	0.53	
9518.00	91.020	92.800	6112.06	3290.55	-623.55	3235.46	40°22'24.844"N	104°12'38.729"W	1.38	
9614.00	90.620	91.430	6110.69	3386.04	-627.10	3331.38	40°22'24.809"N	104°12'37.490"W	1.49	
9709.00	88.760	90.600	6111.20	3480.34	-628.78	3426.36	40°22'24.792"N	104°12'36.262"W	2.14	
9806.00	88.920	91.250	6113.17	3576.60	-630.35	3523.32	40°22'24.777"N	104°12'35.010"W	0.69	
9901.00	88.700	91.430	6115.14	3670.95	-632.57	3618.28	40°22'24.755"N	104°12'33.783"W	0.30	
9998.00	89.880	91.750	6116.34	3767.35	-635.26	3715.23	40°22'24.728"N	104°12'32.530"W	1.26	
10094.00	90.370	92.060	6116.13	3862.82	-638.45	3811.18	40°22'24.696"N	104°12'31.290"W	0.60	
10191.00	89.910	88.330	6115.89	3958.91	-638.78	3908.16	40°22'24.693"N	104°12'30.037"W	3.87	
10286.00	89.260	87.610	6116.58	4052.48	-635.41	4003.10	40°22'24.726"N	104°12'28.811"W	1.02	
10381.00	89.320	88.630	6117.76	4146.08	-632.30	4098.04	40°22'24.756"N	104°12'27.584"W	1.08	
10477.00	90.520	89.490	6117.89	4240.93	-630.72	4194.02	40°22'24.772"N	104°12'26.344"W	1.54	
10571.00	90.030	88.720	6117.44	4333.82	-629.25	4288.01	40°22'24.786"N	104°12'25.130"W	0.97	
10664.00	89.940	88.610	6117.47	4425.60	-627.09	4380.98	40°22'24.807"N	104°12'23.928"W	0.15	
10695.00	90.250	88.420	6117.41	4456.18	-626.28	4411.97	40°22'24.815"N	104°12'23.528"W	1.17	Last BHI Survey
10765.00	90.250	88.420	6117.11	4525.22	-624.35	4481.94	40°22'24.834"N	104°12'22.624"W	0.00	Projection to Bit



# Actual Wellpath Report

PRONGHORN 12-42-28HNC AWP

Page 6 of 7



## REFERENCE WELLPATH IDENTIFICATION

Operator	BONANZA CREEK OIL COMPANY	Slot	SLOT#03 PRONGHORN 12-42-28HNC (1412'FNL & 349'FWL,SEC.28)
Area	COLORADO	Well	PRONGHORN 12-42-28HNC
Field	WELD COUNTY	Wellbore	PRONGHORN 12-42-28HNC AWB
Facility	SEC.28-T5N-R61W		

## HOLE & CASING SECTIONS - Ref Wellbore: PRONGHORN 12-42-28HNC AWB Ref Wellpath: PRONGHORN 12-42-28HNC AWP

String/Diameter	Start MD [ft]	End MD [ft]	Interval [ft]	Start TVD [ft]	End TVD [ft]	Start N/S [ft]	Start E/W [ft]	End N/S [ft]	End E/W [ft]
9.625in Casing Surface	17.00	775.00	758.00	17.00	774.99	0.00	0.00	-2.56	0.80
8.75in Open Hole	775.00	6521.00	5746.00	774.99	6128.83	-2.56	0.80	-580.63	240.20
7in Casing Intermediate	17.00	6499.00	6482.00	17.00	6127.75	0.00	0.00	-582.90	218.35
6.125in Open Hole	6521.00	10765.00	4244.00	6128.83	6117.11	-580.63	240.20	-624.35	4481.94

## WELLPATH COMPOSITION - Ref Wellbore: PRONGHORN 12-42-28HNC AWB Ref Wellpath: PRONGHORN 12-42-28HNC AWP

Start MD [ft]	End MD [ft]	Positional Uncertainty Model	Log Name/Comment	Wellbore
17.00	6461.00	NaviTrak (Standard)	BHI/Navtirak MWD 8.75 " Hole <237'-6461'>	PRONGHORN 12-42-28HNC AWB
6461.00	10695.00	NaviTrak (Standard)	BHI/Navitrak MWD 6.125" Hole <6570'-10695'>	PRONGHORN 12-42-28HNC AWB
10695.00	10765.00	Blind Drilling (std)	Projection to bit	PRONGHORN 12-42-28HNC AWB





**Actual Wellpath Report**  
**PRONGHORN 12-42-28HNC AWP**  
Page 7 of 7



REFERENCE WELLPATH IDENTIFICATION			
Operator	BONANZA CREEK OIL COMPANY	Slot	SLOT#03 PRONGHORN 12-42-28HNC (1412'FNL & 349'FWL,SEC.28)
Area	COLORADO	Well	PRONGHORN 12-42-28HNC
Field	WELD COUNTY	Wellbore	PRONGHORN 12-42-28HNC AWB
Facility	SEC.28-T5N-R61W		

WELLPATH COMMENTS				
MD [ft]	Inclination [°]	Azimuth [°]	TVD [ft]	Comment
17.00	0.000	71.280	17.00	Tie on Point
237.00	0.190	71.280	237.00	First BHI Survey
10695.00	90.250	88.420	6117.41	Last BHI Survey
10765.00	90.250	88.420	6117.11	Projection to Bit