



410 17th Street, Suite 1500  
Denver, CO 80202  
(720) 440-6100 phone  
(720) 305-0804 fax

[Bonanzacrk.com](http://Bonanzacrk.com)

March 18, 2013

Colorado Oil and Gas Conservation Commission  
The Chancery Building  
1120 Lincoln Street, Suite 801  
Denver, CO 80203

Attn: Director Matt Lepore

Re: Notice of 318A.a.(4)D. Horizontal Wellbore Spacing Unit Proposal  
North Platte E-A-24HNC  
SHL: SESW (461' FSL, 1359 FWL) Sec 24-5N-63W, 6<sup>TH</sup> PM  
Top of Production: SESW (531' FSL, 160' FWL) Sec 24-5N-63W, 6<sup>TH</sup> PM  
Bottom of Production: NENW (470' FNL, 160' FWL) Sec 24-5N-63W, 6<sup>TH</sup> PM  
Weld County, Colorado

Director Lepore:

Bonanza Creek Energy, Inc. (Bonanza) intends to permit, drill and operate the referenced Niobrara Horizontal Well. As defined by Colorado Oil and Gas Conservation Commission (COGCC) Rule 318A.a.(4)D., Bonanza proposes the following wellbore spacing unit:

W/2W/2 Sec 24-T5N-R63W 6th PM and E/2E/2 Sec 23-T5N-R63W 6th PM containing 320 acres more or less

Bonanza has notified the other owners in the unit and no objections were received. Copies of the notifications are maintained in Bonanza's files.

Bonanza respectfully requests that you review the enclosed wellbore spacing unit documentation and approve the referenced APD.

Please do not hesitate to call or email me, directly, at (720) 440-6100 or [KCaplan@bonanzacrk.com](mailto:KCaplan@bonanzacrk.com), should you have any questions pertaining to this matter.

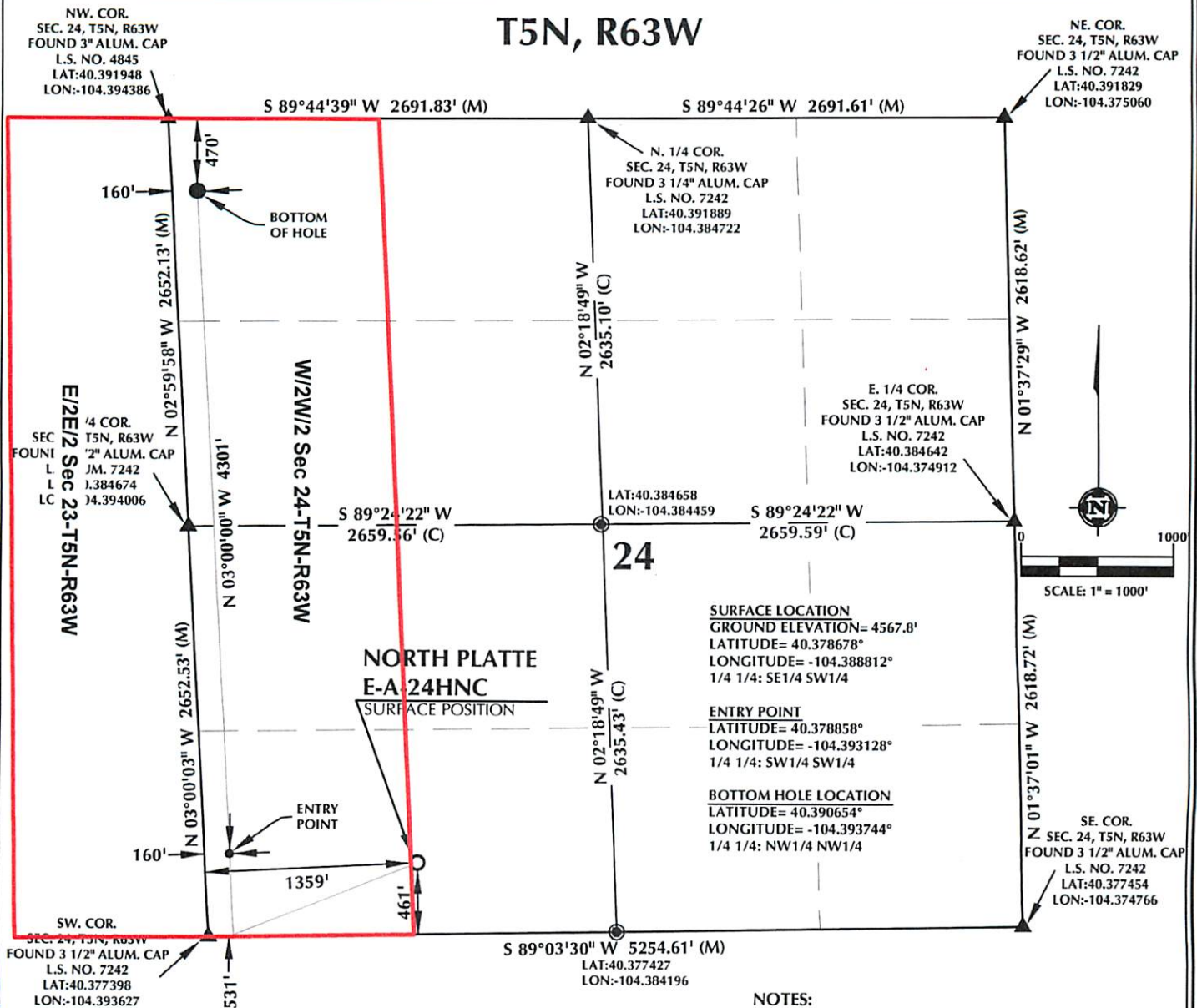
Thank you for your cooperation.

Sincerely,  
BONANZA CREEK ENERGY, INC.  
BONANZA CREEK ENERGY OPERATING COMPANY, LLC

A handwritten signature in black ink, appearing to read 'Keith Caplan'.

Keith Caplan  
Sr. Regulatory Specialist

# T5N, R63W



## NOTES:

- ▲ INDICATES FOUND SECTION CORNER
- INDICATES CALCULATED CORNER
- DRAWING LATITUDE AND LONGITUDE COORDINATES ARE NAD 83 (CORS 96)(EPOCH:2002)
- ELEVATION BASED ON NAVD88 (GEOID09)
- BASIS OF BEARING DERIVED FROM COLORADO COORDINATE

## CERTIFICATE OF SURVEYOR:

THIS IS TO CERTIFY THAT THE ABOVE PLAT WAS PREPARED FROM FIELD NOTES OF ACTUAL SURVEY MADE BY ME OR UNDER MY SUPERVISION AND THAT THE SAME ARE TRUE AND CORRECT TO THE BEST OF MY KNOWLEDGE AND BELIEF.

## NEAREST CULTURAL ITEMS:

BUILDING: ±557' SW  
BUILDING UNIT: 5280'+  
HIGH OCCUPANCY BUILDING UNIT: 5280'+  
DESIGNATED OUTSIDE ACTIVITY AREA: 5280'+



Wellbore Spacing Unit Outline

## Wellbore Spacing Unit Map

18 February 2014 ksc

North Platte E-A-24HNC  
W/2W/2 Sec 24-T5N-R63W 6th PM  
E/2E/2 Sec 23-T5N-R63W 6th PM  
Weld County, Colorado