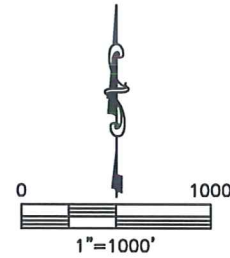
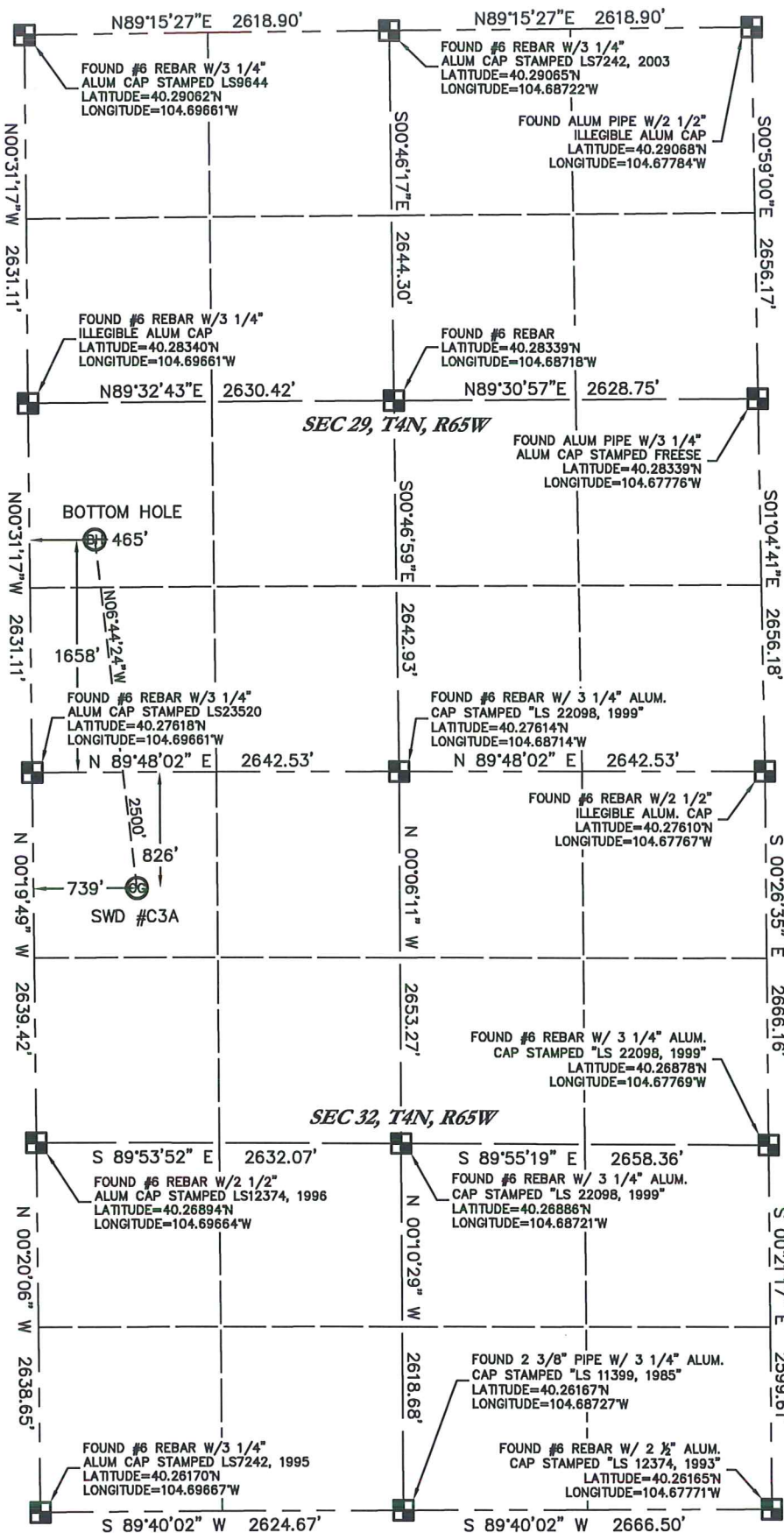


KING SURVEYORS 650 E. GARDEN DR. WINDSOR, CO 80550

WELL LOCATION CERTIFICATE

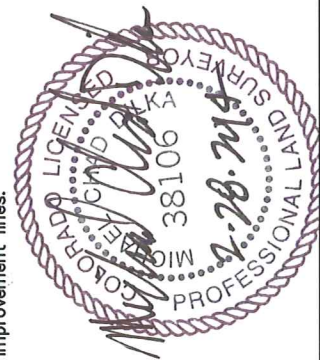
SWD #C3A
THIS MAP DOES NOT REPRESENT A BOUNDARY SURVEY

SECTION: 32
TOWNSHIP: 4N
RANGE: 65W



SURFACE LOCATION
LATITUDE: 40.27390°N
LONGITUDE: 104.69397°W
PDOP: 1.2
ELEV: 4901'
1/4, 1/4; NW1/4 NW1/4 SEC 32

BOTTOM HOLE
LATITUDE: 40.28072°N
LONGITUDE: 104.69494°W
1/4, 1/4; NW1/4 SW1/4 SEC 29



Michael Chad Dilka - On Behalf Of King Surveyors
Colorado Licensed Professional Land Surveyor #38106
PROJECT#: 2010104

In accordance with a request from CLAY DOKE for HIGH SIERRA WATER, King Surveyors has determined the surface location of SWD #C3A to be 826' from the NORTH line and 739' from the WEST line, as measured at right angles, from the section lines of Section 32 and the bottom hole to be 1658' from the SOUTH line and 465' from the WEST line, as measured at right angles, from the section lines of Section 29, both in Township 4 North, Range 65 West of the Sixth Principal Meridian, County of Weld, State of Colorado.

I hereby state that this Well Location Certificate was prepared by me, or under my direct supervision, that the fieldwork was completed on 12-26-2013, for and on behalf of HIGH SIERRA WATER, that this is not a Land Survey Plat or an Improvement Survey Plat, and that it is not to be relied upon for establishment of fence, building, or other future improvement lines.

- NOTES:**
- 1) Bearings shown are Grid Bearings of the Colorado State Plane Coordinate System, North Zone, North American Datum 1983. The lineal dimensions as contained herein are based upon the "U.S. Survey Foot".
 - 2) Ground elevations are based on an observed GPS elevation (NAVD 1988 DATUM).
 - 3) IMPROVEMENTS: See LOCATION DRAWING for all visible improvements within 500' of the disturbed area.
 - 4) SURFACE USE: OIL/GAS/WATER DISPOSAL FACILITY
 - 5) INSTRUMENT OPERATOR: AARON LUND
 - 6) NEAREST CULTURAL ITEMS:
 - BUILDING: 78' WEST
 - BUILDING UNIT: 355' NORTHWEST
 - HIGH OCCUPANCY BUILDING UTILITY AREA: 5280' +
 - DESIGNATED OUTDOOR ACTIVITY AREA: 5280' +
 - PUBLIC ROAD: 720' WEST
 - ABOVE GROUND UTILITY: 206' NORTHWEST
 - RAILROAD: 5280' +
 - PROPERTY LINE: 84' SOUTHEAST
- LEGEND**
- Found Aliquot Monument As Described
 - Calculated Position
 - Set Aliquot Monument As Described