

TVD 1:500 Feet	
Client: Total Directional	
Well Name: ANSCHUTZ STATE #5-62-25-1080XBH	
Field: Weld County, Colorado	
Location: SEC 25 T5N R62W 6TH P.	Company Representative
Country: United States	Cecil Crow
Prov/State: Colorado	
County: Weld	
Drilling Rig #: SST 17	Geologist
Latitude: 40.375022	Blue Spikes
Longitude: 104.279972	
UWI/API: 05-123-38353	
License/Permit#: 18336DSI	Directional Drillers
Job No: 13-132	Paul Loehr
Vertical Section Direction: 79.13	Scott Summers
KB: 18	
DF: 0	
GL: 4581	
Permanent Datum: 0	MWD Operator
Drilling Measurement From: 0	Paul Perhonis
Magnetic Declination: 8.26	David Keele
Meg Field: 0.530	
Dip Angle: 67.02	
Spud Date: 12-15-13	
Print Date: 12/25/2013	
Log Start Depth: 0	Leg Name
Log End Depth: 6500	Main Leg
Comments:	
- ZONE DIRECT MWD SERVICES LTD ("ZONE DIRECT") DOES NOT MAKE AND EXPRESSLY DISCLAIMS ALL WARRANTIES, REPRESENTATIONS AND CONDITIONS, WITH RESPECT TO THE INFORMATION CONTAINED IN THIS DOCUMENT, WHETHER ORAL OR WRITTEN, EXPRESS OR IMPLIED OR ARISING FROM CONTRACT OR STATUTE INCLUDING, WITHOUT LIMITATION, THE IMPLIED WARRANTIES OF MERCHANTABILITY, ACCURACY AND FITNESS FOR A PARTICULAR PURPOSE. ANYONE USING THIS INFORMATION DOES SO AT THEIR OWN RISK AND ACKNOWLEDGES AND AGREES THAT ZONE DIRECT SHALL NOT BE LIABLE FOR ANY ERROR, OMISSION, DEFECT, DEFICIENCY, OR NONCONFORMITY IN THE INFORMATION AND WITHOUT LIMITING THE FOREGOING, ZONE DIRECT DOES NOT WARRANT THAT THE INFORMATION (OR THE USE THEREOF) WILL BE FREE OF ALL ERRORS OR THAT IT DOES NOT INFRINGE ANY THIRD PARTY RIGHTS. ANYONE USING THE INFORMATION AGREES TO INDEMNIFY AND HOLD ZONE DIRECT HARMLESS FROM ALL CLAIMS, ACTIONS, COSTS (INCLUDING LEGAL COSTS ON A SOLICITOR AND HIS OWN CLIENT BASIS) AND LIABILITIES ARISING FROM OR IN CONNECTION WITH THE USE OF THE INFORMATION.	

BitRun:	1	2	3	4
Start Depth:	0	5645	5992	6595
End Depth:	5645	5992	6595	10808.2
Start Date:	2013/12/14	2013/12/19	2013/12/20	2013/12/23
End Date:	2013/12/19	2013/12/20	2013/12/21	2013/12/25
Gamma Scale Factor:	3.5	2.7	2.7	2.25
Survey-to-Bit (PTB):	52	53	53	62
Gamma-to-Bit (GTB):	41	43	43	49
Drill Collar ID/OD:	3.125 / 6.5	2.063/4.5	2.063 / 4.5	2.75 / 4.75
Hole Size:	8.75	8.75	8.75	6.125
Casing Size:	9.625	9.625	9.625	8
Casing Start Depth:	0	0	0	828
Casing End Depth:	800	810	810	6595
Mud Type 1:	Water Base	Water	Water	WBM
Mud Weight 1:	9.15	9.7	10.20	10
Mud Viscosity 1:	41	65	50	49
Mud Type 2:	0	-	-	-
Mud Weight 2:	0	-	-	-
Mud Viscosity 2:	0	-	-	-
Comment:	-	Curve Assembly	Swap MWD Tool String	Lateral Assembly

BitRun:				
Start Depth:				
End Depth:				
Start Date:				
End Date:				
Gamma Scale Factor:				
Survey-to-Bit (PTB):				
Gamma-to-Bit (GTB):				
Drill Collar ID/OD:				
Hole Size:				
Casing Size:				
Casing Start Depth:				
Casing End Depth:				
Mud Type 1:				
Mud Weight 1:				
Mud Viscosity 1:				
Mud Type 2:				
Mud Weight 2:				
Mud Viscosity 2:				
Comment:				

**TVD
1:500
Feet**

Feet

[illegible]

1283
1288
1293
1298
1303
1308
1313
1318
1323
1328
1333
1338
1343
1348
1353
1358
1363
1368
1373
1378
1383
1388
1393
1398
1403
1408
1413
1418
1423
1428
1433
1438
1443
1448
1453
1458
1463
1468
1473
1478
1483
1488
1493
1498
1503
1508
1513
1518
1523
1528
1533
1538
1543
1548
1553
1558
1563
1568
1573
1578
1583
1588
1593
1598
1603
1608
1613
1618
1623
1628
1633
1638
1643
1648
1653
1658
1663
1668
1673
1678
1683
1688
1693
1698
1703
1708
1713
1718
1723
1728
1733
1738
1743
1748
1753
1758
1763
1768
1773
1778
1783
1788
1793

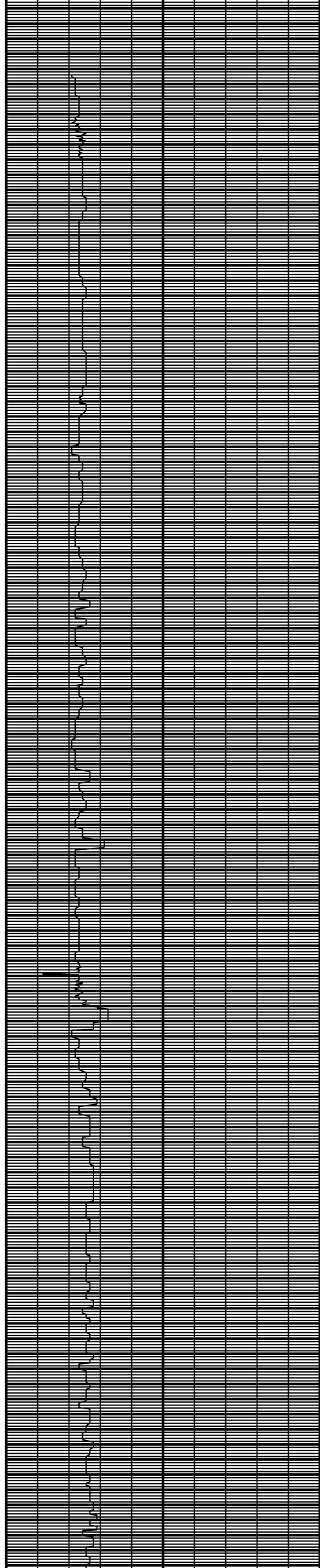
1798
1803
1808
1813
1818
1823
1828
1833
1838
1843
1848
1853
1858
1863
1868
1873
1878
1883
1888
1893
1898
1903
1908
1913
1918
1923
1928
1933
1938
1943
1948
1953
1958
1963
1968
1973
1978
1983
1988
1993
1998
2003
2008
2013
2018
2023
2028
2033
2038
2043
2048
2053
2058
2063
2068
2073
2078
2083
2088
2093
2098
2103
2108
2113
2118
2123
2128
2133
2138
2143
2148
2153
2158
2163
2168
2173
2178
2183
2188
2193
2198
2203
2208
2213
2218
2223
2228
2233
2238
2243
2248
2253
2258
2263
2268
2273
2278
2283
2288
2293
2298
2303
2308
2313

2318
2323
2328
2333
2338
2343
2348
2353
2358
2363
2368
2373
2378
2383
2388
2393
2398
2403
2408
2413
2418
2423
2428
2433
2438
2443
2448
2453
2458
2463
2468
2473
2478
2483
2488
2493
2498
2503
2508
2513
2518
2523
2528
2533
2538
2543
2548
2553
2558
2563
2568
2573
2578
2583
2588
2593
2598
2603
2608
2613
2618
2623
2628
2633
2638
2643
2648
2653
2658
2663
2668
2673
2678
2683
2688
2693
2698
2703
2708
2713
2718
2723
2728
2733
2738
2743
2748
2753
2758
2763
2768
2773
2778
2783
2788
2793
2798
2803
2808
2813
2818
2823
2828
2833

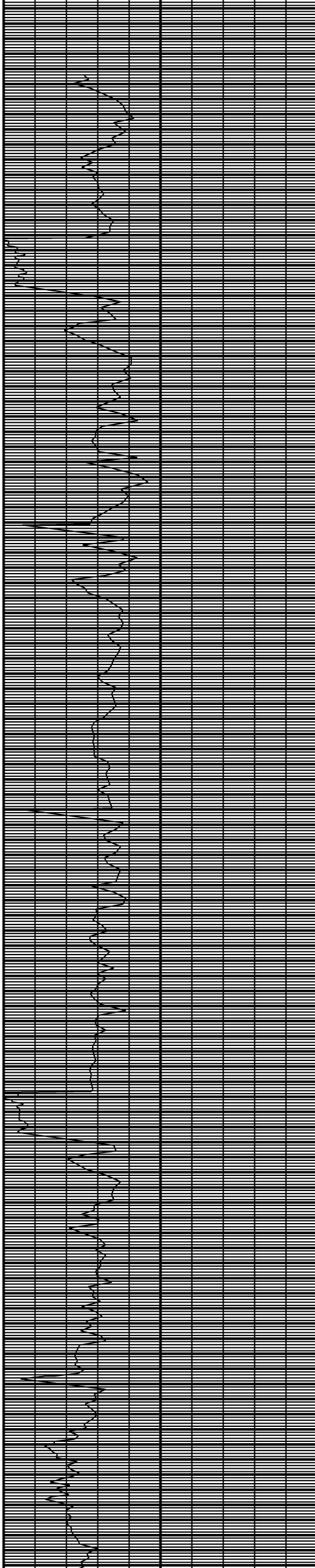
2838
2843
2848
2853
2858
2863
2868
2873
2878
2883
2888
2893
2898
2903
2908
2913
2918
2923
2928
2933
2938
2943
2948
2953
2958
2963
2968
2973
2978
2983
2988
2993
2998
3003
3008
3013
3018
3023
3028
3033
3038
3043
3048
3053
3058
3063
3068
3073
3078
3083
3088
3093
3098
3103
3108
3113
3118
3123
3128
3133
3138
3143
3148
3153
3158
3163
3168
3173
3178
3183
3188
3193
3198
3203
3208
3213
3218
3223
3228
3233
3238
3243
3248
3253
3258
3263
3268
3273
3278
3283
3288
3293
3298
3303
3308
3313
3318
3323
3328
3333
3338
3343
3348
3353

3358
3363
3368
3373
3378
3383
3388
3393
3398
3403
3408
3413
3418
3423
3428
3433
3438
3443
3448
3453
3458
3463
3468
3473
3478
3483
3488
3493
3498
3503
3508
3513
3518
3523
3528
3533
3538
3543
3548
3553
3558
3563
3568
3573
3578
3583
3588
3593
3598
3603
3608
3613
3618
3623
3628
3633
3638
3643
3648
3653
3658
3663
3668
3673
3678
3683
3688
3693
3698
3703
3708
3713
3718
3723
3728
3733
3738
3743
3748
3753
3758
3763
3768
3773
3778
3783
3788
3793
3798
3803
3808
3813
3818
3823
3828
3833
3838
3843
3848
3853
3858
3863
3868

3873
3878
3883
3888
3893
3898
3903
3908
3913
3918
3923
3928
3933
3938
3943
3948
3953
3958
3963
3968
3973
3978
3983
3988
3993
3998
4003
4008
4013
4018
4023
4028
4033
4038
4043
4048
4053
4058
4063
4068
4073
4078
4083
4088
4093
4098
4103
4108
4113
4118
4123
4128
4133
4138
4143
4148
4153
4158
4163
4168
4173
4178
4183
4188
4193
4198
4203
4208
4213
4218
4223
4228
4233
4238
4243
4248
4253
4258
4263
4268
4273
4278
4283
4288
4293
4298
4303
4308
4313
4318
4323
4328
4333
4338
4343
4348
4353
4358
4363
4368
4373
4378
4383
4388



4393
4398
4403
4408
4413
4418
4423
4428
4433
4438
4443
4448
4453
4458
4463
4468
4473
4478
4483
4488
4493
4498
4503
4508
4513
4518
4523
4528
4533
4538
4543
4548
4553
4558
4563
4568
4573
4578
4583
4588
4593
4598
4603
4608
4613
4618
4623
4628
4633
4638
4643
4648
4653
4658
4663
4668
4673
4678
4683
4688
4693
4698
4703
4708
4713
4718
4723
4728
4733
4738
4743
4748
4753
4758
4763
4768
4773
4778
4783
4788
4793
4798
4803
4808
4813
4818
4823
4828
4833
4838
4843
4848
4853
4858
4863
4868
4873
4878
4883
4888
4893
4898
4903
4908



MD: 4496
INC: 1
AZM: 223.8
TVD: 4414.85
TVD: 4414.85
TVD: 4414.85
TVD: 4414.85
TVD: 4414.85
TVD: 4414.85
TVD: 4414.85
TVD: 4414.85

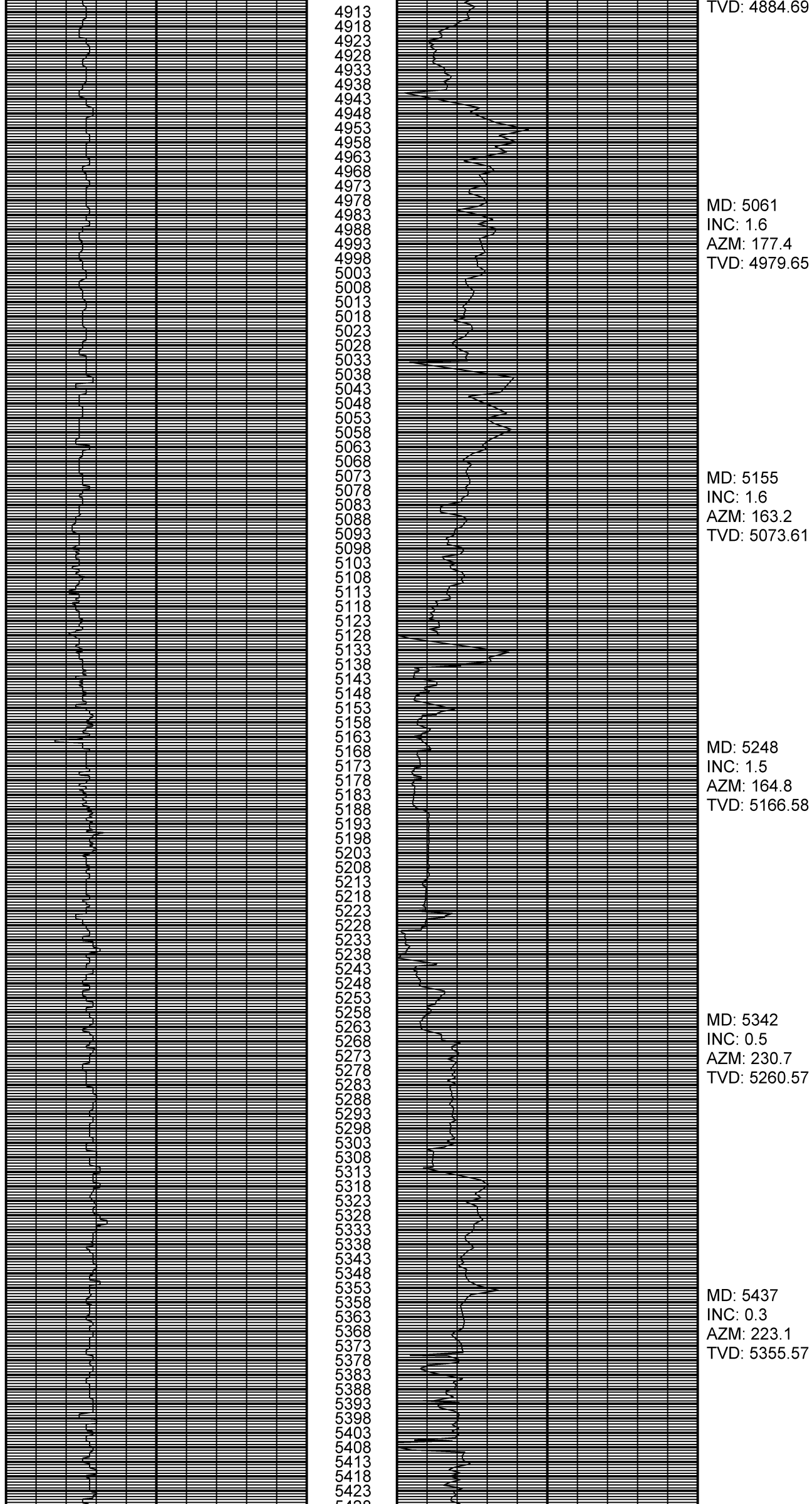
MD: 4591
INC: 1.6
AZM: 162.5
TVD: 4509.83

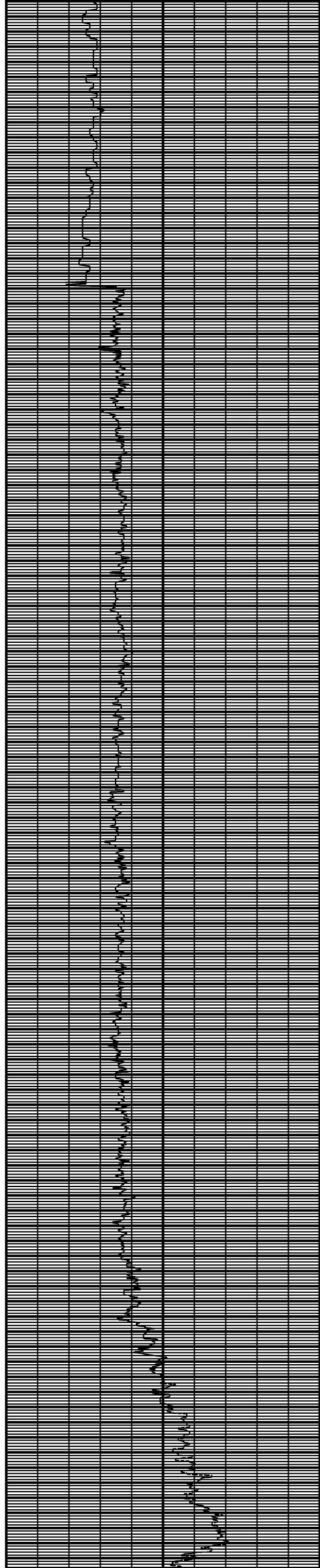
MD: 4685
INC: 1.2
AZM: 155.3
TVD: 4603.8

MD: 4779
INC: 1.2
AZM: 156.4
TVD: 4697.78

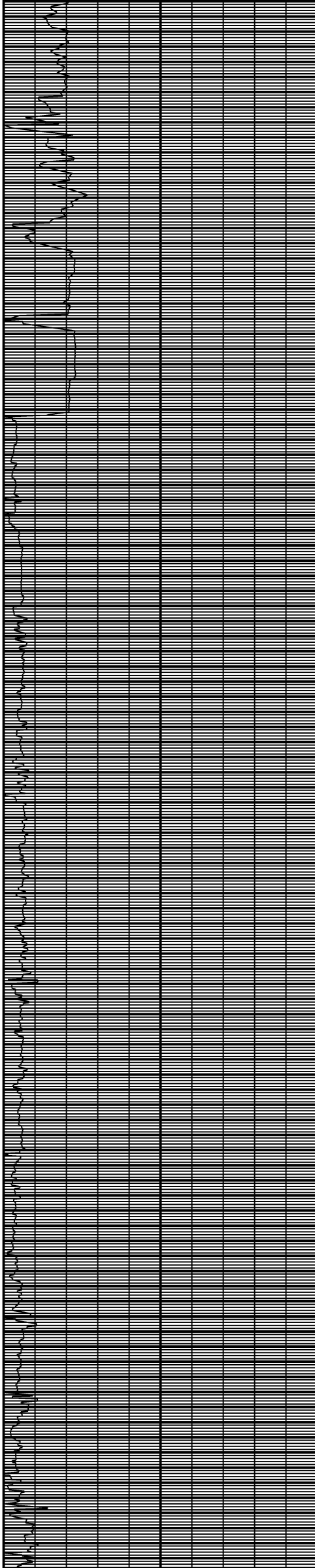
MD: 4872
INC: 2.2
AZM: 181.8
TVD: 4790.74

MD: 4966
INC: 1.7
AZM: 176.1
TVD: 4884.69





5428
5433
5438
5443
5448
5453
5458
5463
5468
5473
5478
5483
5488
5493
5498
5503
5508
5513
5518
5523
5528
5533
5538
5543
5548
5553
5558
5563
5568
5573
5578
5583
5588
5593
5598
5603
5608
5613
5618
5623
5628
5633
5638
5643
5648
5653
5658
5663
5668
5673
5678
5683
5688
5693
5698
5703
5708
5713
5718
5723
5728
5733
5738
5743
5748
5753
5758
5763
5768
5773
5778
5783
5788
5793
5798
5803
5808
5813
5818
5823
5828
5833
5838
5843
5848
5853
5858
5863
5868
5873
5878
5883
5888
5893
5898
5903
5908
5913
5918
5923
5928
5933
5938
5943



MD: 5531
INC: 0.5
AZM: 183.1
TVD: 5449.57
TVD: 5449.57

MD: 5593
INC: 0.7
AZM: 200.9
TVD: 5511.57

MD: 5625
INC: 0.7
AZM: 194
TVD: 5543.57

MD: 5657
INC: 0.5
AZM: 212.6
TVD: 5575.57

MD: 5720
INC: 5.1
AZM: 106.5
TVD: 5638.49

MD: 5782
INC: 12.4
AZM: 96.3
TVD: 5699.73

MD: 5814
INC: 16.4
AZM: 91.8
TVD: 5730.72

MD: 5845
INC: 19.4
AZM: 89.7
TVD: 5760.22

MD: 5876
INC: 23.6
AZM: 90.7
TVD: 5789.06

MD: 5907
INC: 26.7
AZM: 90.5
TVD: 5817.12

MD: 5938
INC: 31.1
AZM: 92
TVD: 5844.25

MD: 5969
INC: 34
AZM: 90
TVD: 5870.38

MD: 6001
INC: 34.9
AZM: 87.4
TVD: 5896.77

MD: 6032
INC: 36.4
AZM: 86.3
TVD: 5921.96

5948	MD: 6003
5953	INC: 41
5958	AZM: 85.7
5963	TVD: 5946.15
5968	MD: 6095
5973	INC: 42.2
5978	AZM: 87.4
5983	TVD: 5976.03
5988	MD: 6126
5993	INC: 44.6
5998	AZM: 87.8
6003	TVD: 5996.0
6008	MD: 6158
6013	INC: 47.3
6018	AZM: 89.2
6023	MD: 6189
6028	INC: 51.2
6033	AZM: 89.2
6038	MD: 6221
6043	INC: 55.3
6048	Δ ZM: 89.2
6053	MD: 6252
6058	INC: 58.4
6063	Δ ZM: 88.0
6068	MD: 6284
6073	MD: 10808
6078	INC: 91.7
6083	AZM: 85.2
6088	TVD: 6092.79
6093	TVD: 6101.34
6098	TVD: 6108.71
6103	TVD: 6116.08
6108	TVD: 6120.72
6113	TVD: 6124.37
6118	TVD: 6128.01
6123	TVD: 6132.66
6128	TVD: 6140.71
6133	TVD: 6148.41
6138	TVD: 6153.25
6143	TVD: 6158.02
6148	TVD: 6162.82
6153	TVD: 6167.62
6158	TVD: 6172.42
6163	TVD: 6177.22
6168	TVD: 6182.02
6173	TVD: 6186.82
6178	TVD: 6191.62
6183	TVD: 6196.42
6188	TVD: 6201.22
6193	TVD: 6206.02
6198	TVD: 6210.82
6203	TVD: 6215.62
6208	TVD: 6220.42
6213	TVD: 6225.22
6218	TVD: 6230.02
6223	TVD: 6234.82
6228	TVD: 6239.62
6233	TVD: 6244.42
6238	TVD: 6249.22
6243	TVD: 6254.02
6248	TVD: 6258.82
6253	TVD: 6263.62
6258	TVD: 6268.42
6263	TVD: 6273.22
6268	TVD: 6278.02
6273	TVD: 6282.82
6278	TVD: 6287.62
6283	TVD: 6292.42
6288	TVD: 6297.22
6293	TVD: 6302.02
6298	TVD: 6306.82
6303	TVD: 6311.62
6308	TVD: 6316.42
6313	TVD: 6321.22
6318	TVD: 6326.02
6323	TVD: 6330.82
6328	TVD: 6335.62
6333	TVD: 6340.42
6338	TVD: 6345.22
6343	TVD: 6350.02
6348	TVD: 6354.82
6353	TVD: 6359.62
6358	TVD: 6364.42
6363	TVD: 6369.22
6368	TVD: 6374.02
6373	TVD: 6378.82
6378	TVD: 6383.62
6383	TVD: 6388.42
6388	TVD: 6393.22
6393	TVD: 6398.02
6398	TVD: 6402.82
6403	TVD: 6407.62
6408	TVD: 6412.42
6413	TVD: 6417.22
6418	TVD: 6422.02
6423	TVD: 6426.82
6428	TVD: 6431.62
6433	TVD: 6436.42
6438	TVD: 6441.22
6443	TVD: 6446.02
6448	TVD: 6450.82
6453	TVD: 6455.62
6458	TVD: 6460.42
6463	TVD: 6465.22

[illegible]

6468
6473
6478
6483
6488
6493
6498

[illegible]