



Cathedral Energy Services
1949 Pyrite Rd
Casper, Wy, 82604

135444

5":100' - MD

11/11/2013 1:11:03 PM

Oper. Company: Anadarko

Country: USA

State / Province: Colorado

County / Parish: Weld

Started: 10/27/2013 04:00 AM

API/UWI: 05-123-36886-0000

Field: DJ Basin

Well: USA FED 2N-36HZ

Rig: Ensign 123

Ended: 10/29/2013 10:00 AM

Personnel

Day Hand: C. Van Oerle

Night Hand: R. Curtis

Comp. Emp: M. Cooney

Location

Latitude: 40.176359

Longitude: -104.722860

Elev. GL: 4995'

Elev. DF: 5008'

Elev. KB: 13'

TD 11,764'
Gamma
ROP

Hole Data

Size	From	To
8.75	885	7722
6.125	7723	11764

Casing Data

Size	From	To
9 5/8	0	885
7	0	7722

Bit Sizes

Size	From	To
8.75	885	7722
6.125	7723	11764

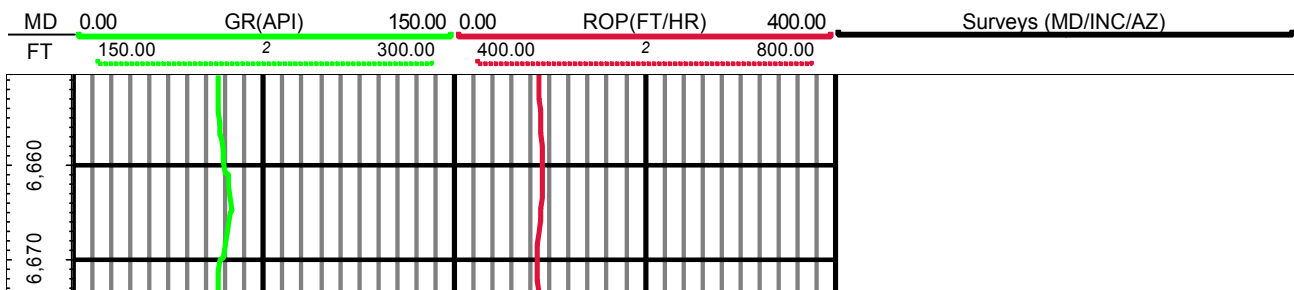
Mud Data

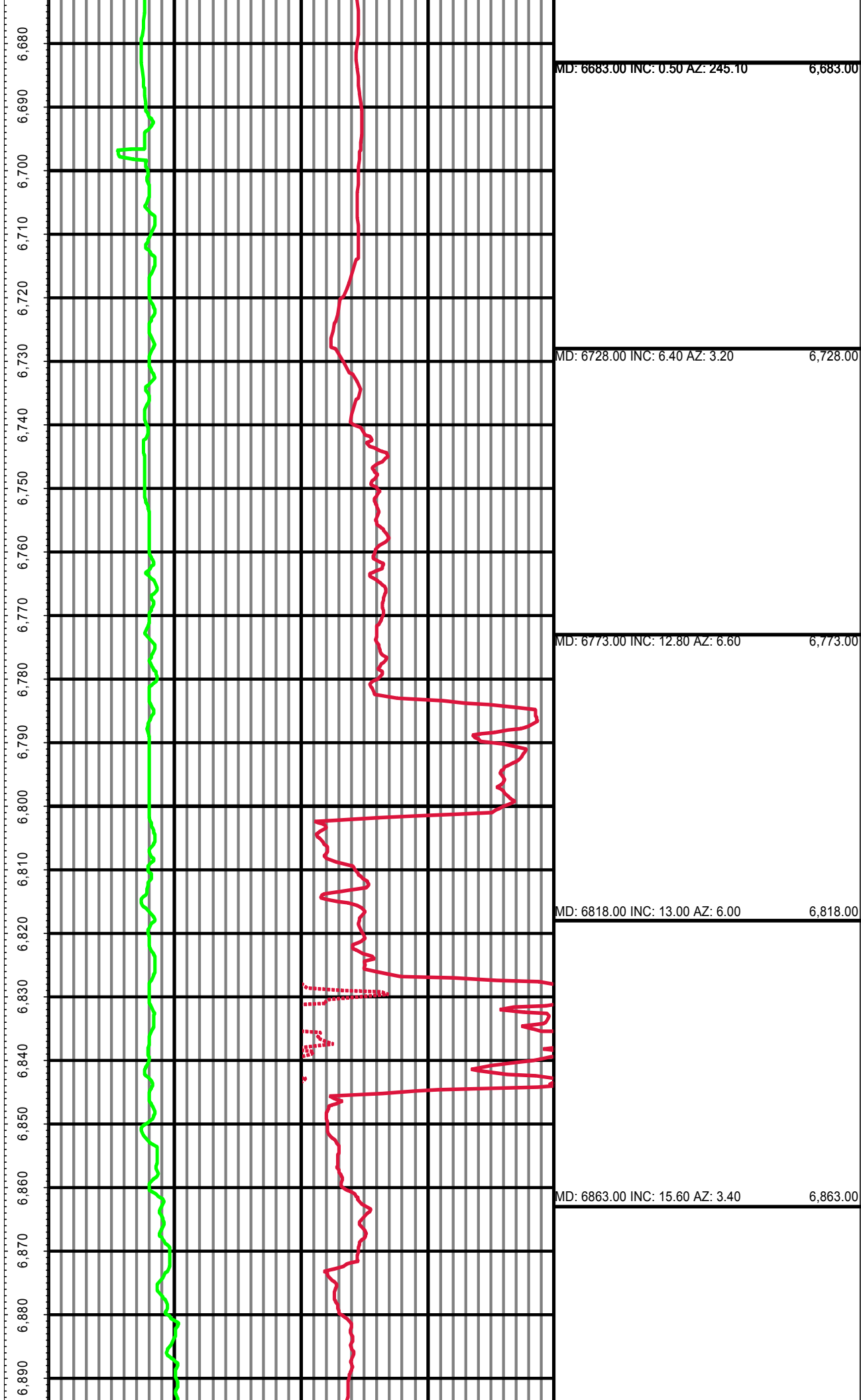
Type	Weight	Density	Viscosity	Rm	Rmf	Rmc	From	To
Water	8.3						885	5500
LSND	9.3						5501	7722
LSND	9.6						7723	11764

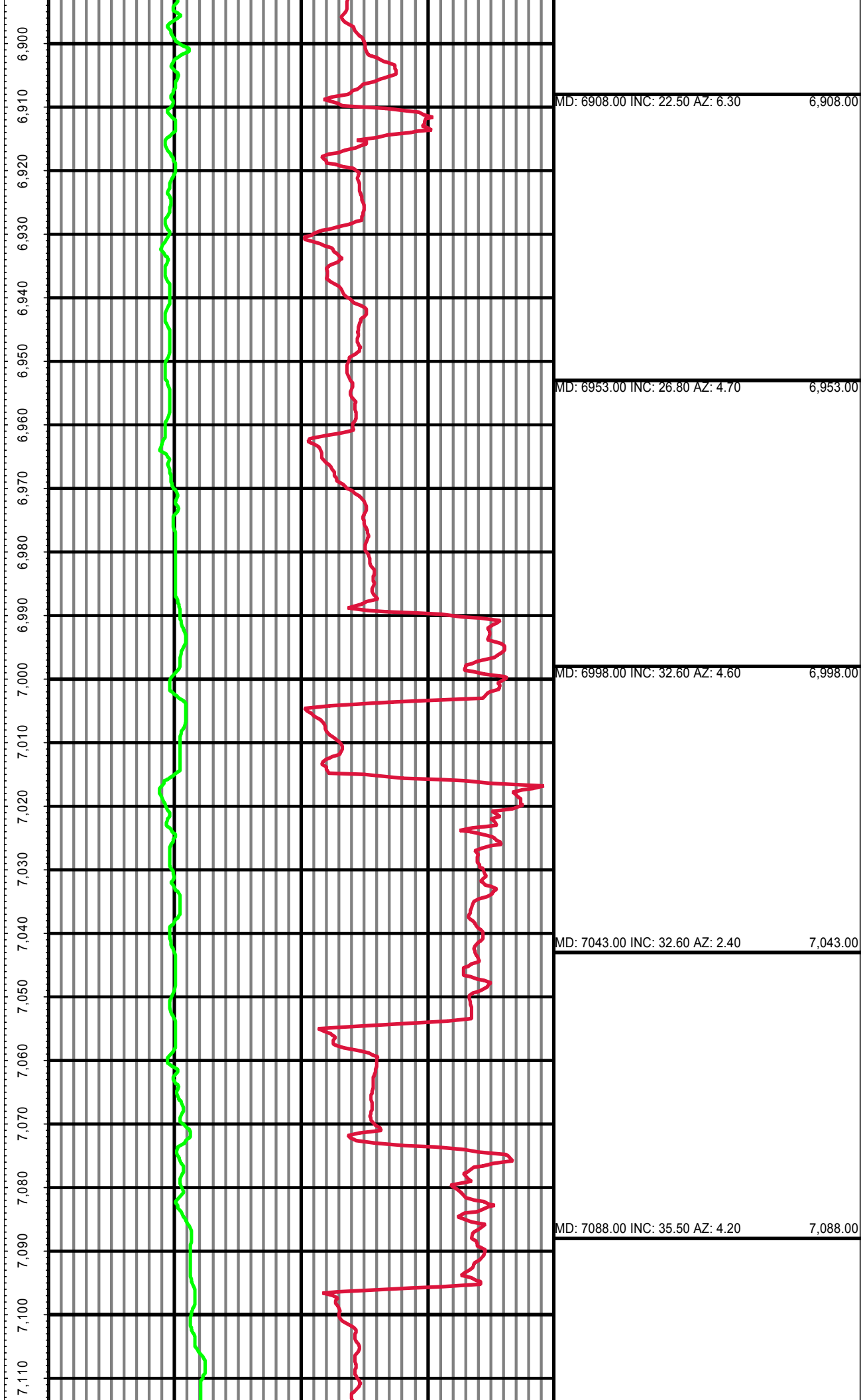
Tool Run Data

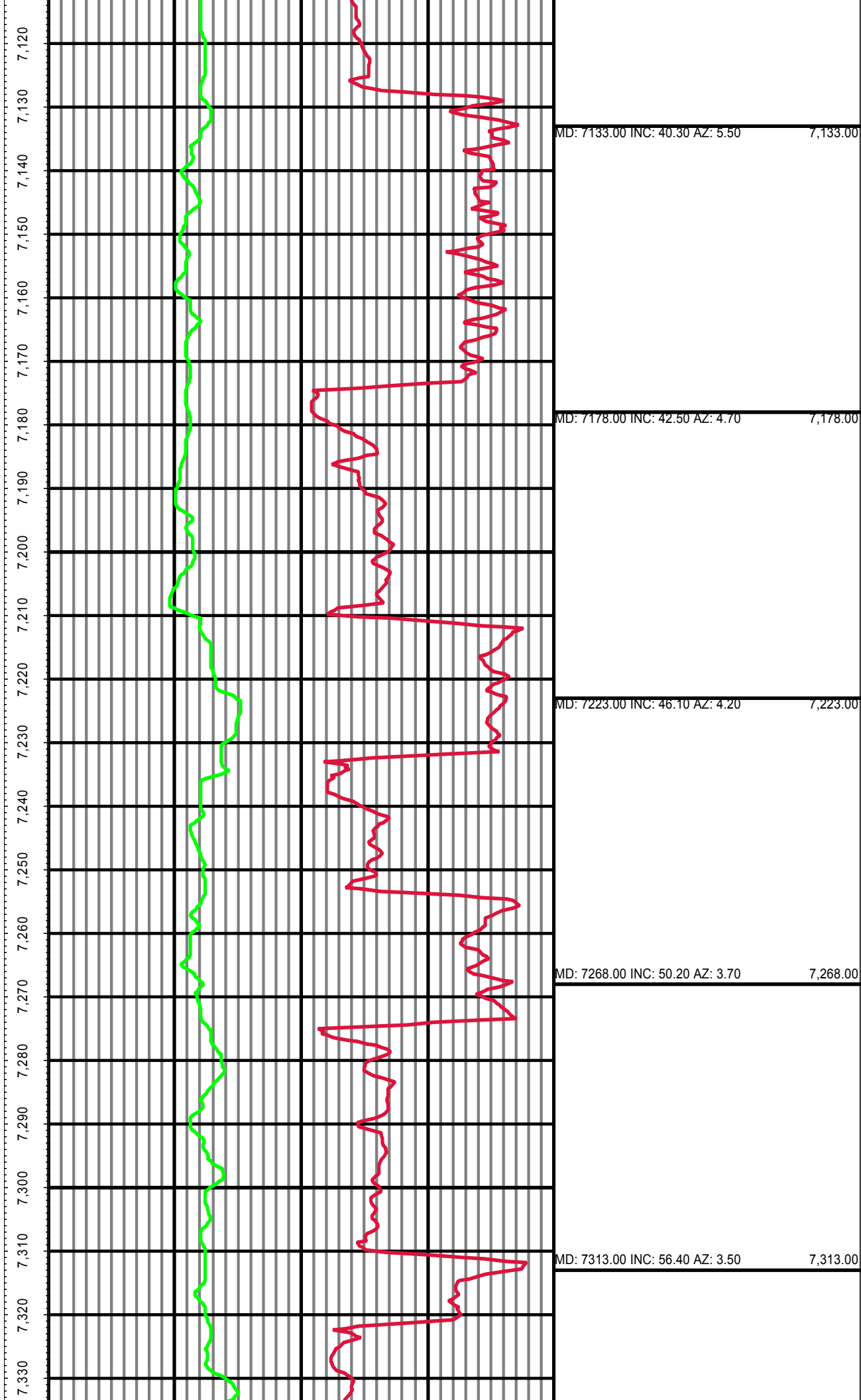
Serial Number	Gamma Offset	Resist. Offset	Start Time	Start Depth	End Time	End Depth
248	39.03	0	10/27/2013 4:00:30 AM	6500	10/29/2013 10:00:30 AM	7722
1061	40.63	0	10/30/2013 6:00:38 AM	7723	11/1/2013 6:00:38 AM	11764

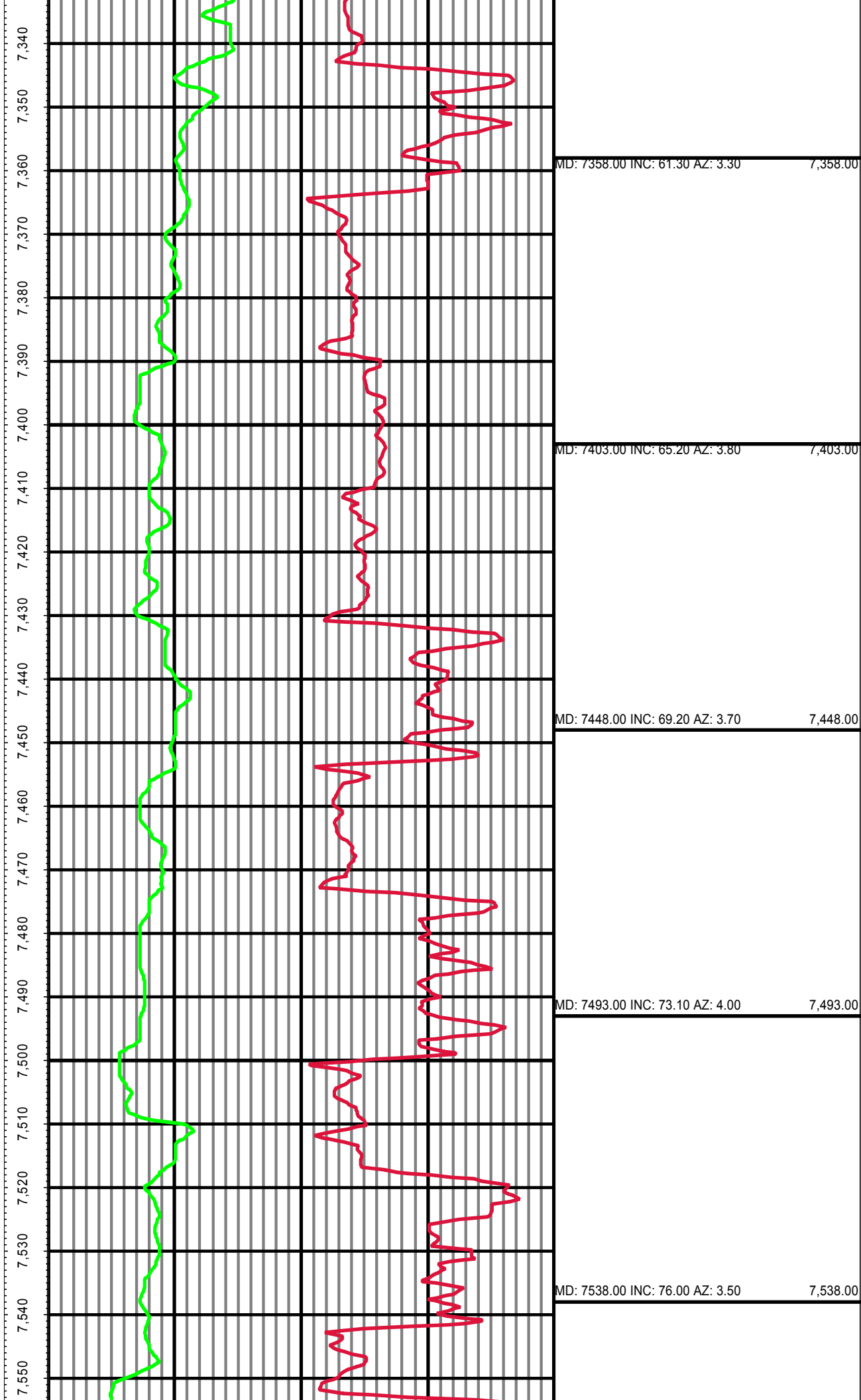
All interpretations are opinions based on inferences from electrical or other measurements and we cannot and do not guarantee the accuracy or correctness of any interpretation, and we shall not except in the case of gross or willful negligence on our part, be liable or responsible for any loss, cost damages or expenses incurred or sustained by anyone resulting from an interpretation made by any of our officers, agents, or employees.

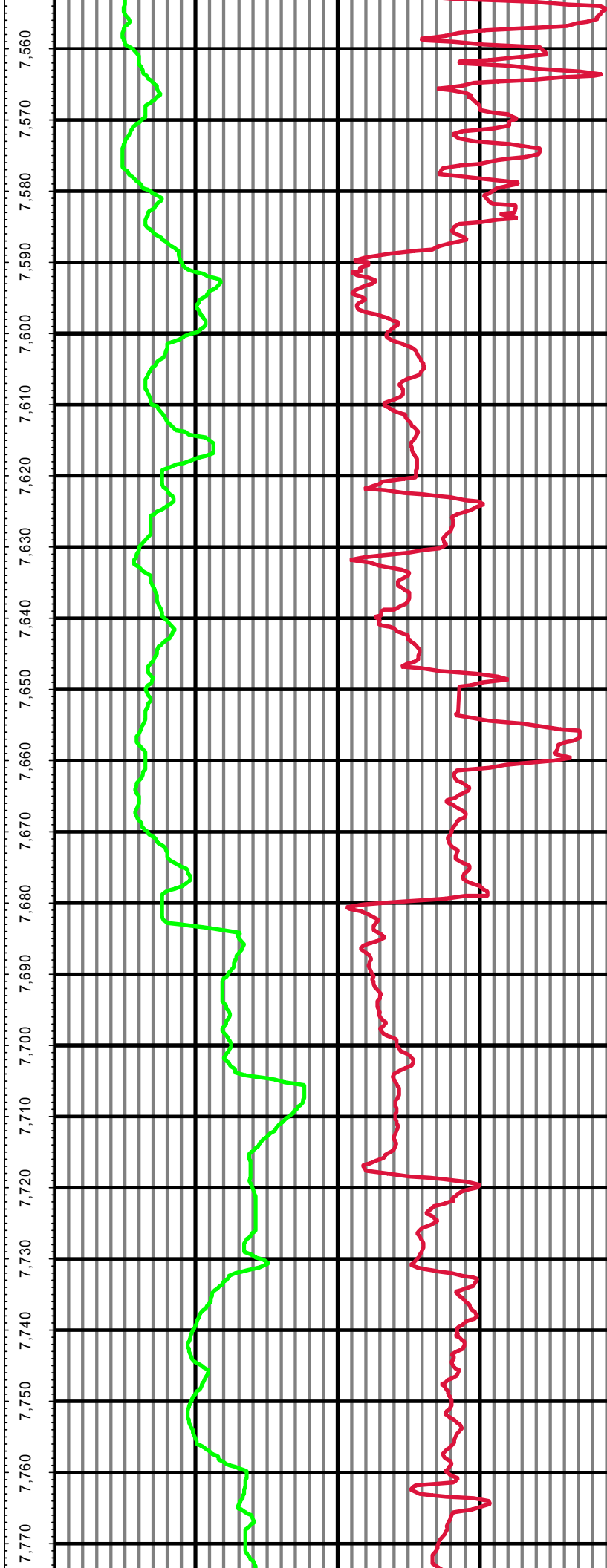










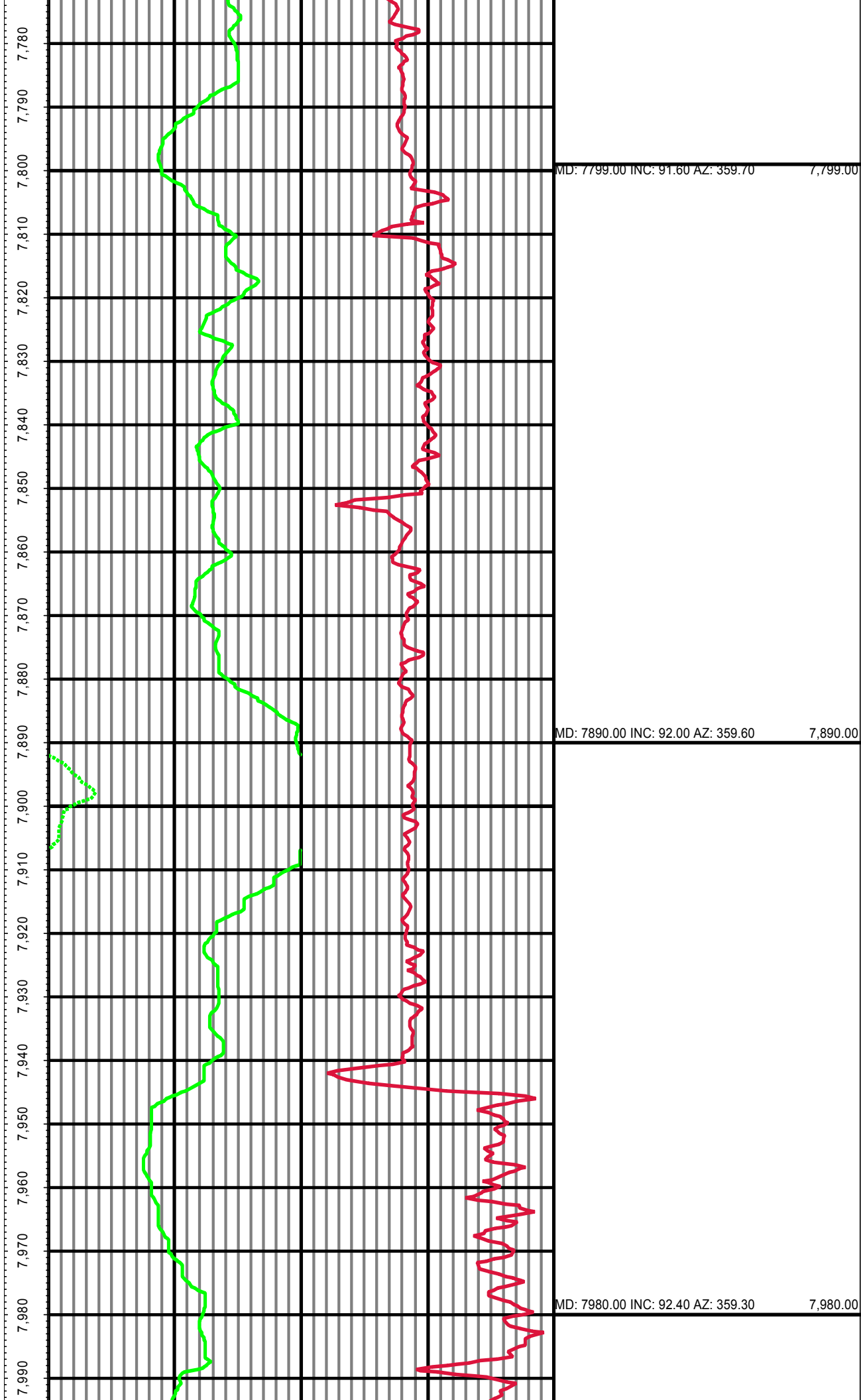


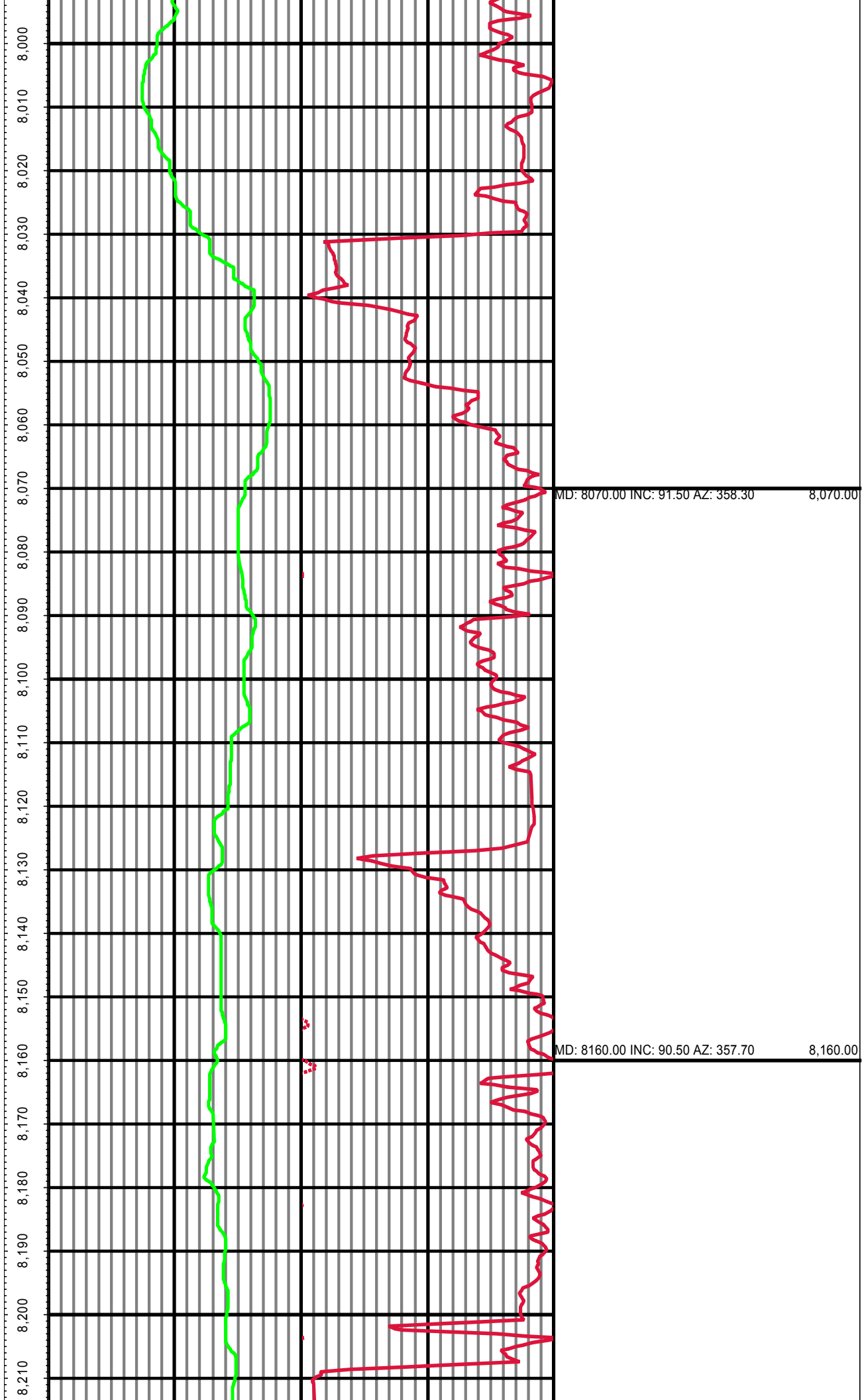
7,560 7,570 7,580 7,590 7,600 7,610 7,620 7,630 7,640 7,650 7,660 7,670 7,680 7,690 7,700 7,710 7,720 7,730 7,740 7,750 7,760 7,770

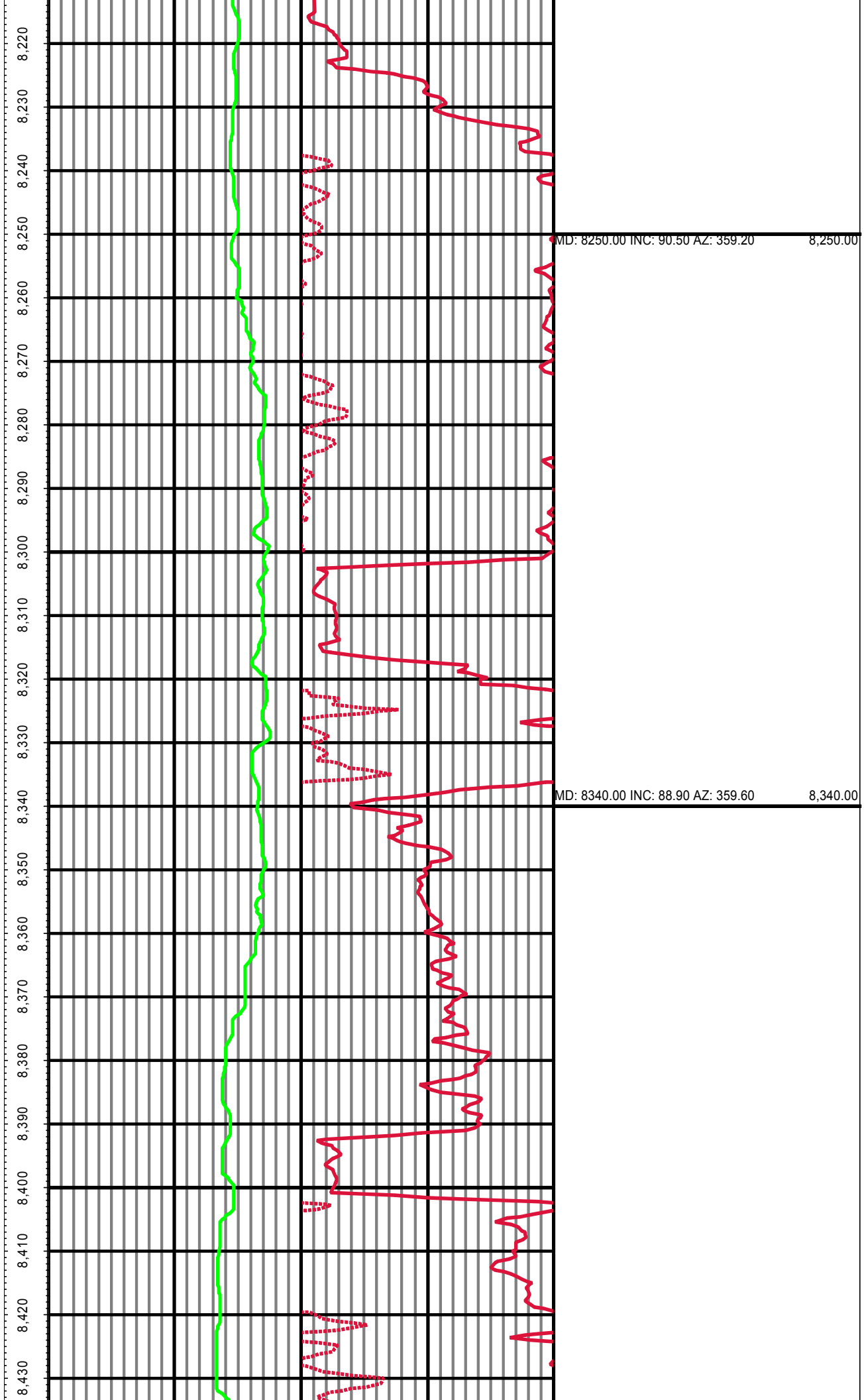
MD: 7583.00 INC: 78.00 AZ: 2.60 7,583.00

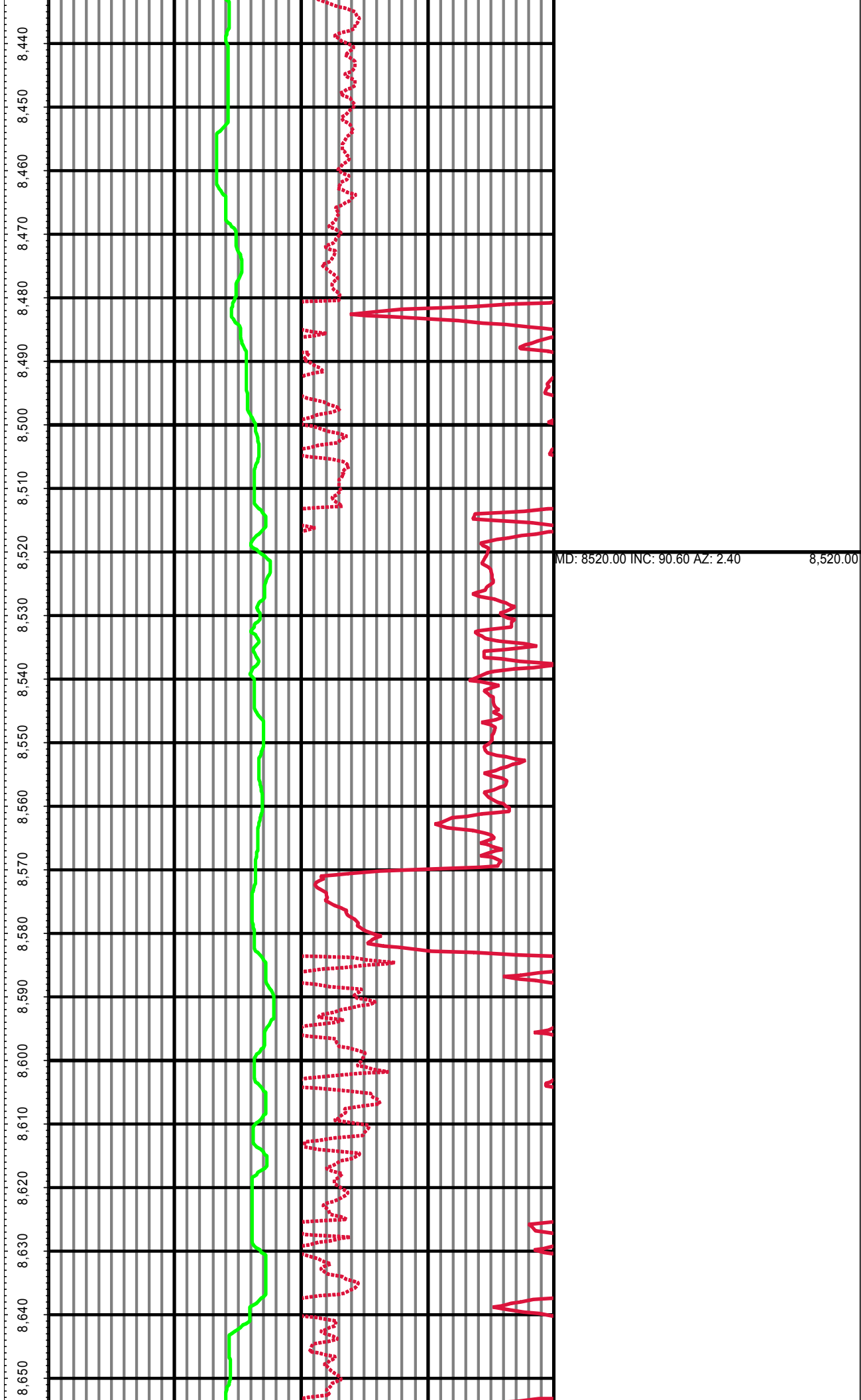
MD: 7624.00 INC: 81.30 AZ: 1.40 7,624.00

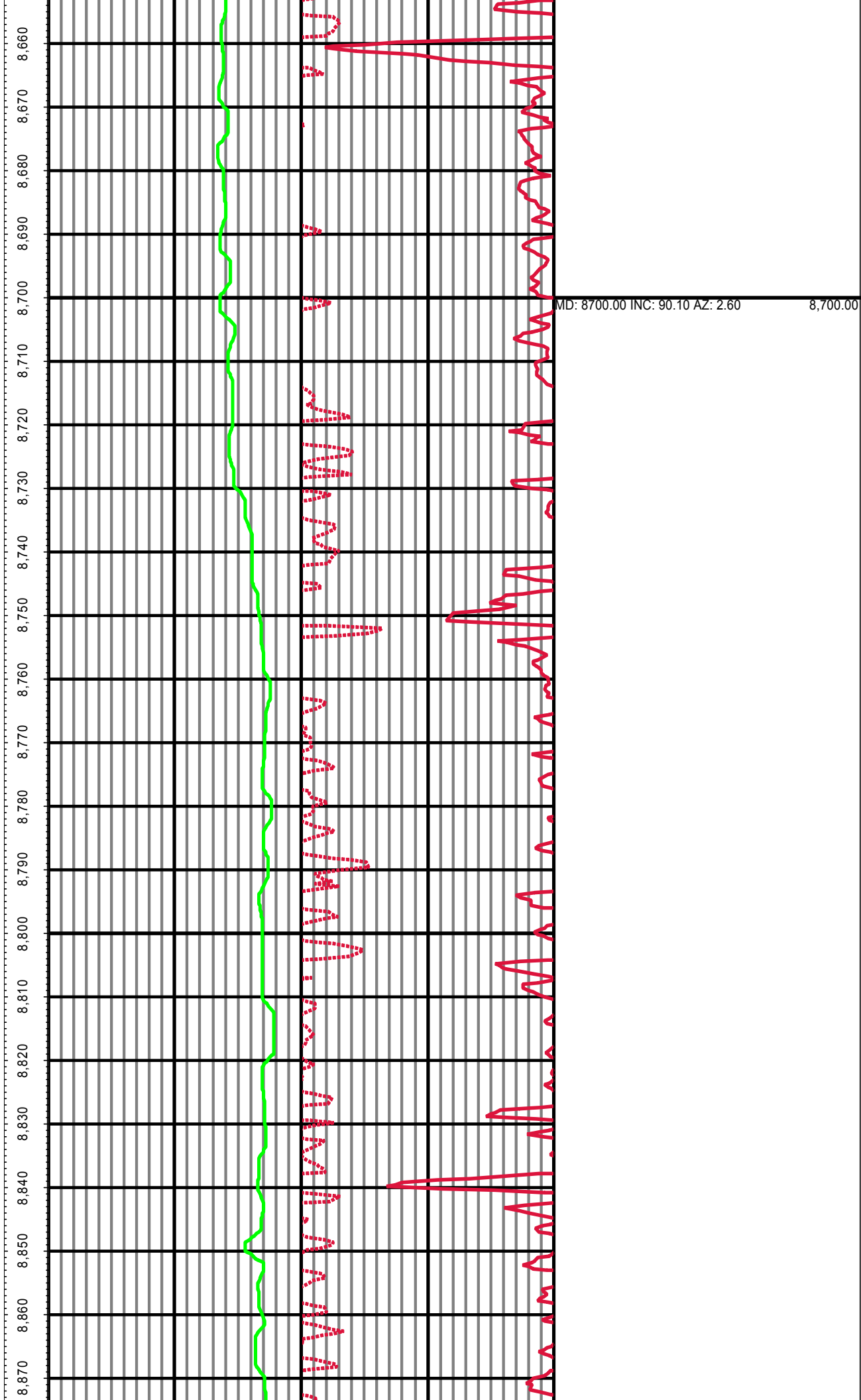
MD: 7667.00 INC: 84.40 AZ: 1.20 7,667.00

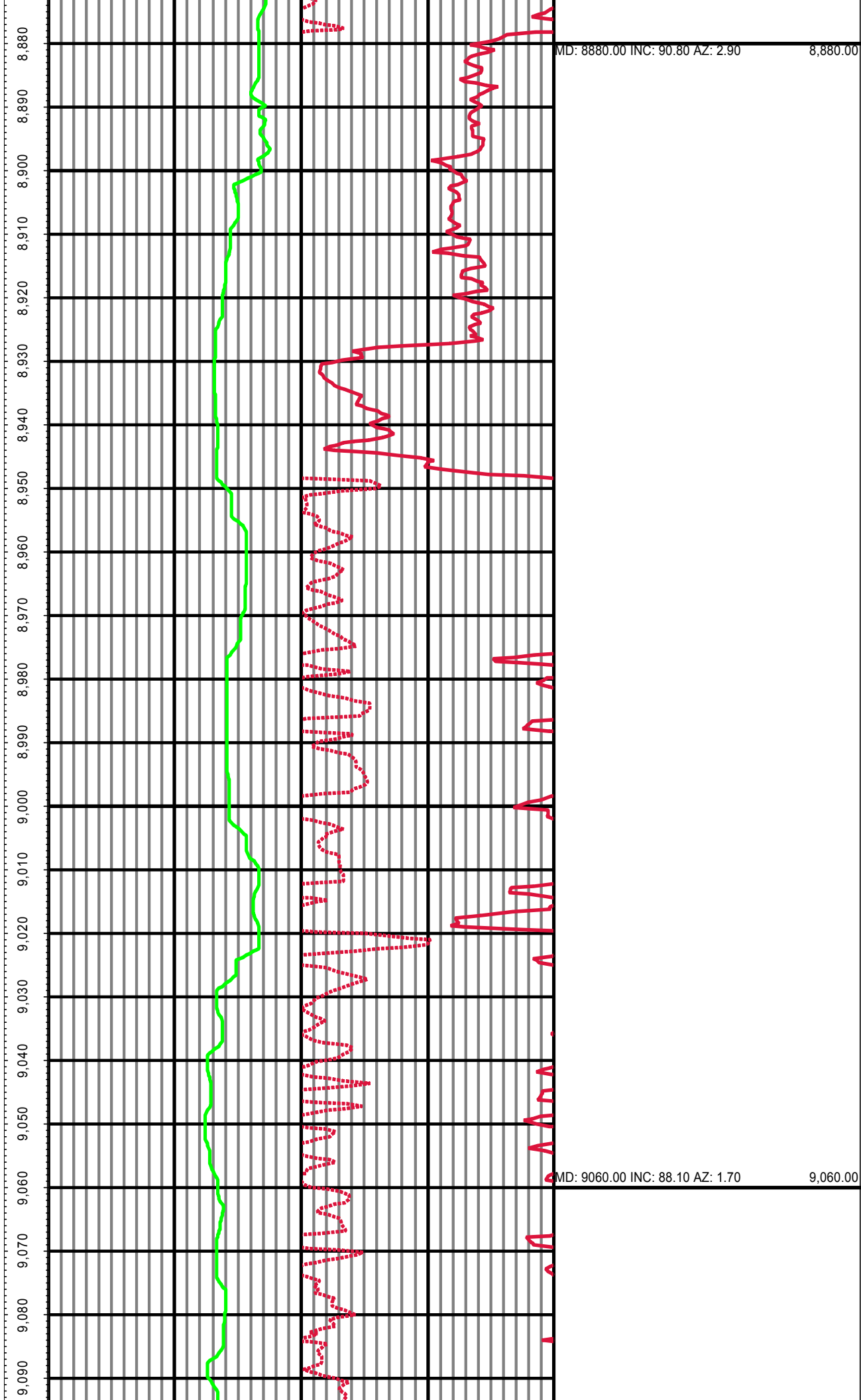


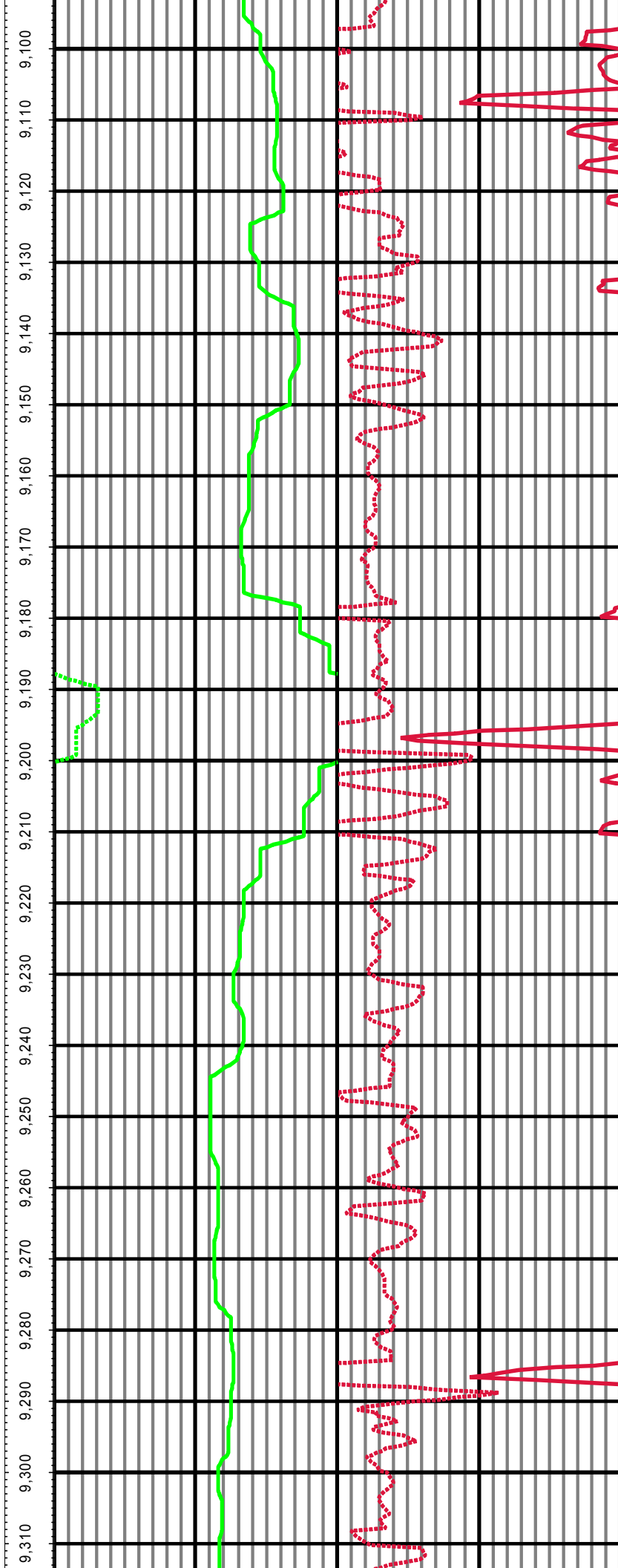






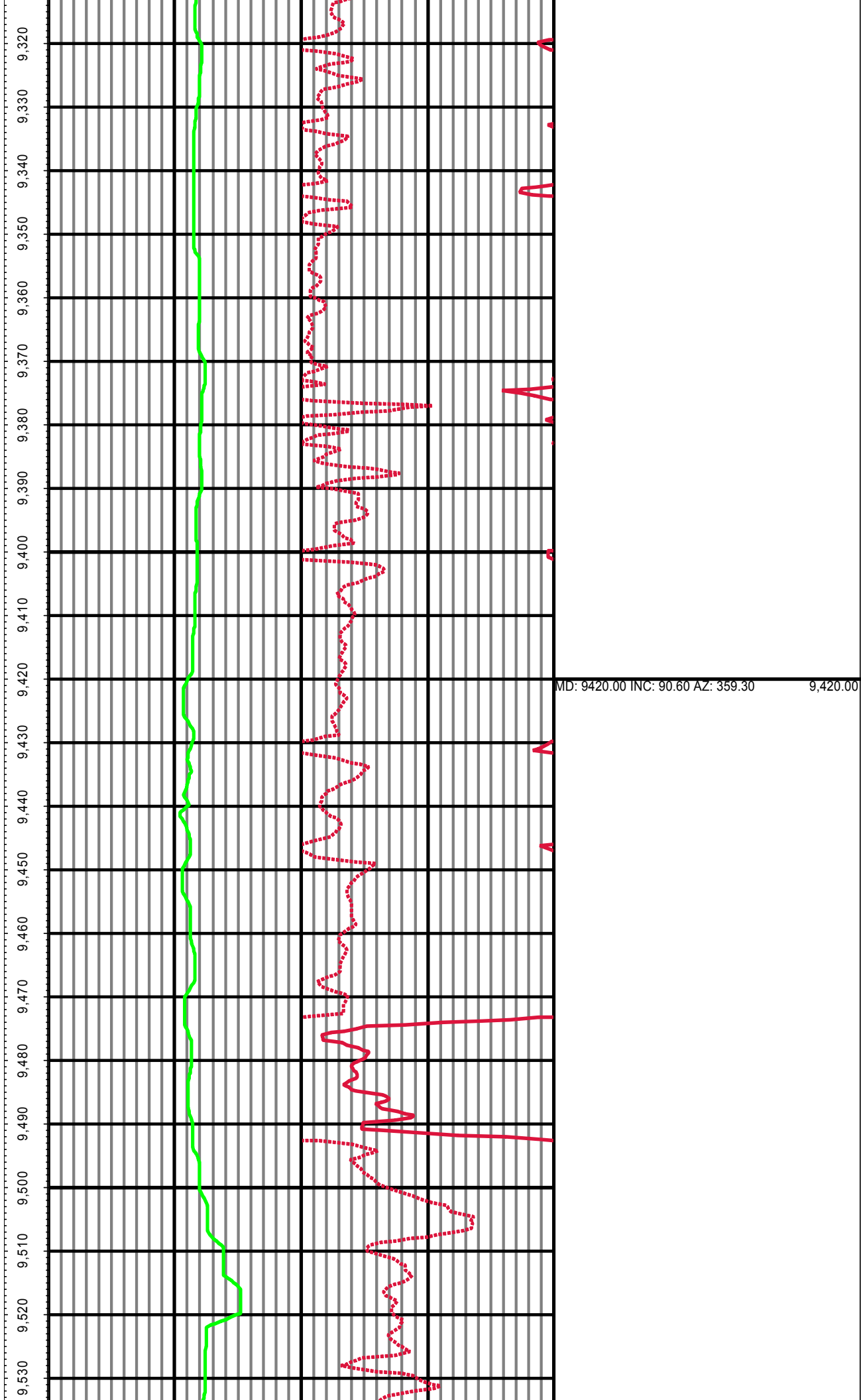


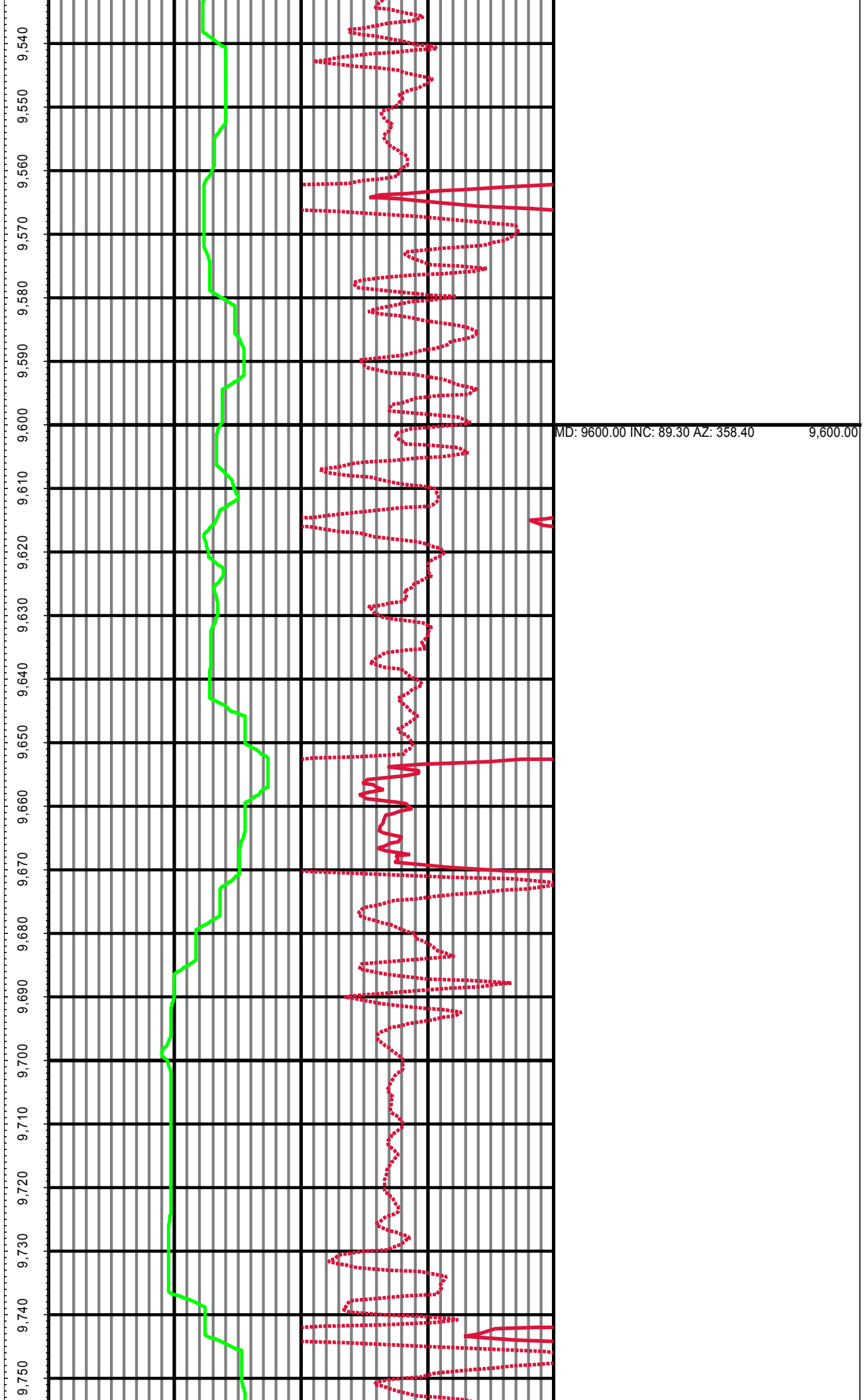


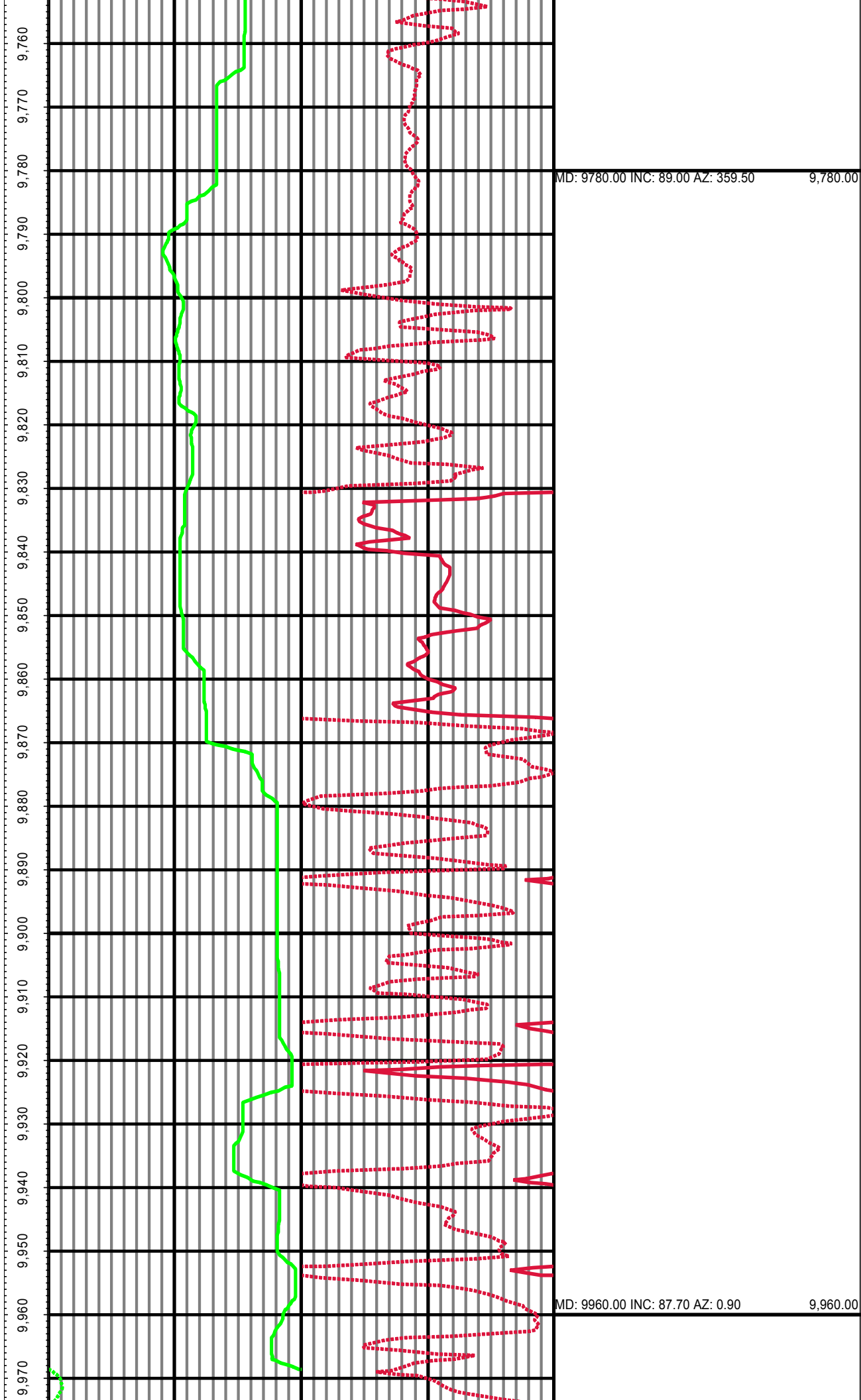


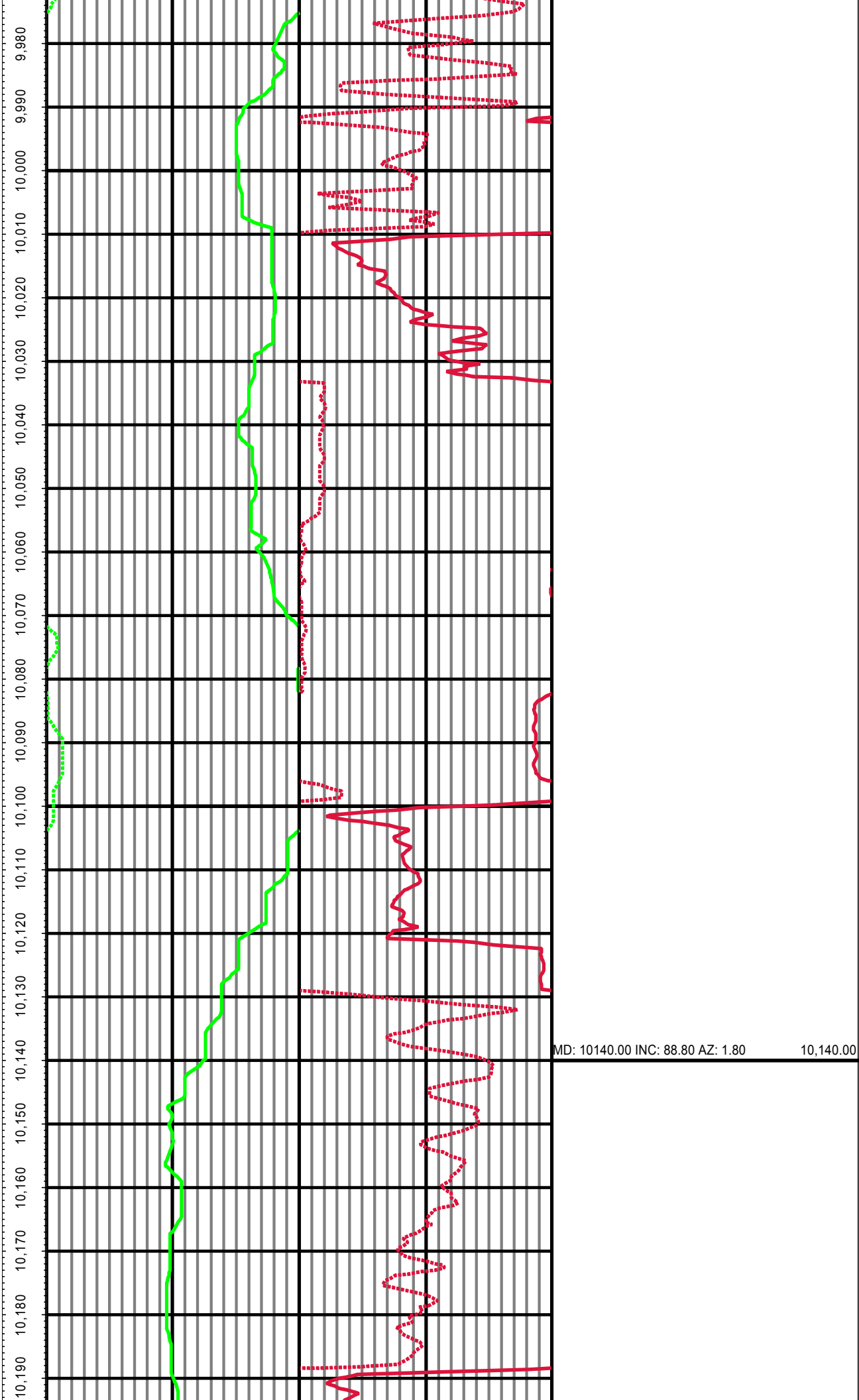
MD: 9240.00 INC: 88.00 AZ: 359.20

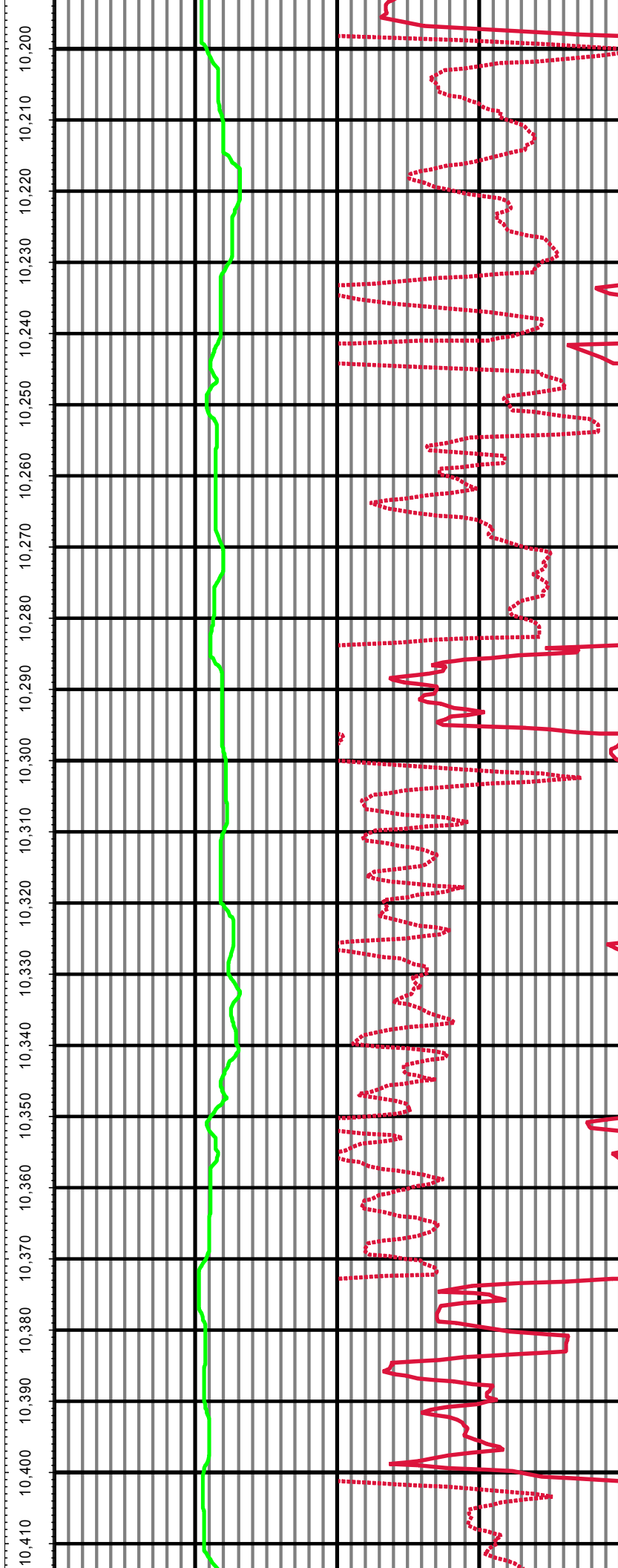
9,240.00





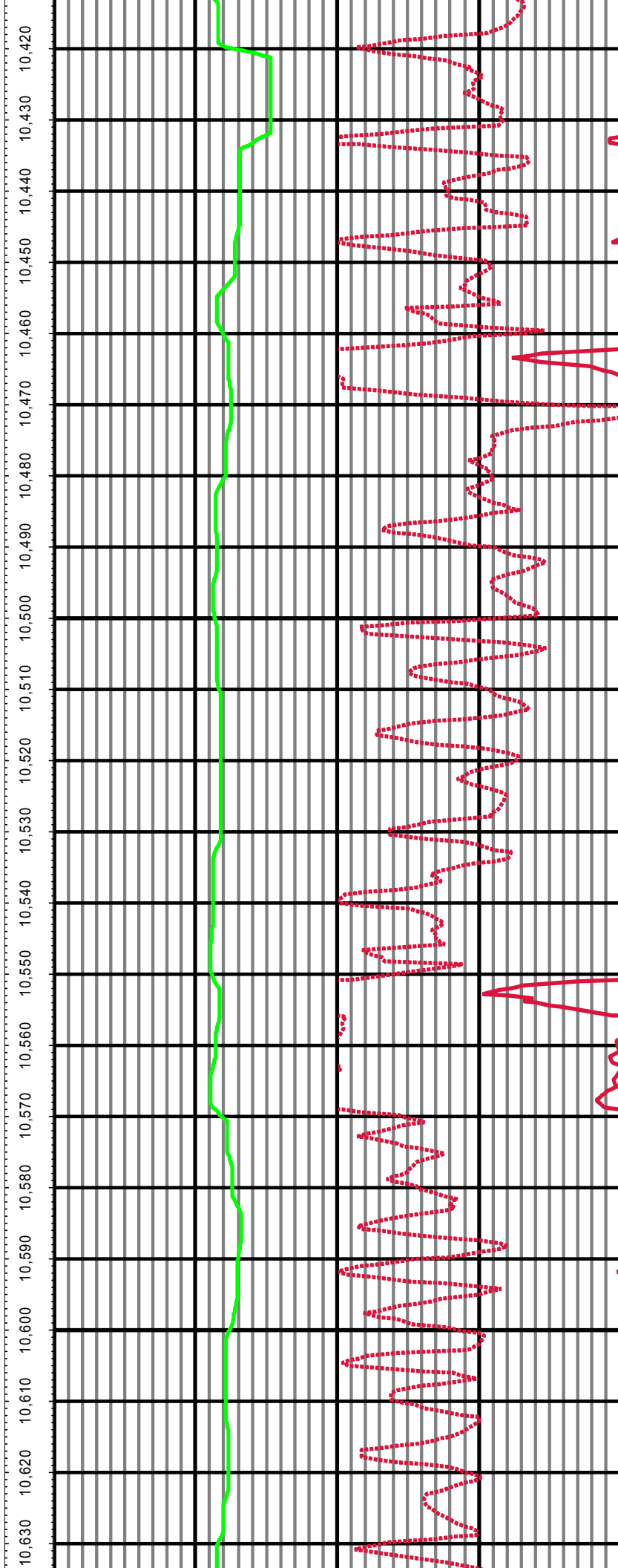






MD: 10321.00 INC: 89.40 AZ: 2.00

10,321.00



MD: 10501.00 INC: 90.90 AZ: 1.10

10,501.00

