

T7S, R96W, 6th. P.M.

WPX Energy Rocky Mountain, LLC

Well location, SG 542-21 (SURFACE LOCATION), located as shown in LOT 8 of Section 22, T7S, R96W, 6th P.M., Garfield County, Colorado.

BASIS OF ELEVATION

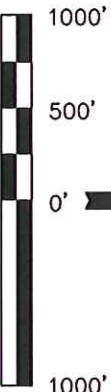
SPOT ELEVATION AT THE NORTHWEST CORNER OF SECTION 30, T5S, R95W, 6th P.M. TAKEN FROM THE FORKED GULCH QUADRANGLE, COLORADO, GARFIELD COUNTY, 7.5 MINUTE SERIES (TOPOGRAPHICAL MAP) PUBLISHED BY THE UNITED STATES DEPARTMENT OF THE INTERIOR, GEOLOGICAL SURVEY. SAID ELEVATION IS MARKED AS BEING 5966 FEET.

BASIS OF BEARINGS

BASIS OF BEARINGS IS A G.P.S. OBSERVATION.

LEGEND:

- = 90° SYMBOL
- = PROPOSED WELL HEAD.
- ▲ = SECTION CORNERS LOCATED.
- △ = SECTION CORNERS RE-ESTABLISHED. (Not Set on Ground.)



CERTIFICATE

THIS IS TO CERTIFY THAT THE ABOVE PLAT WAS PREPARED AND LOCATION AS SHOWN WAS TAKEN ON THE GROUND FROM FIELD NOTES OF ACTUAL SURVEYS MADE BY ME OR UNDER MY SUPERVISION AND THAT THE SAME ARE TRUE AND CORRECT TO THE BEST OF MY KNOWLEDGE AND BELIEF.

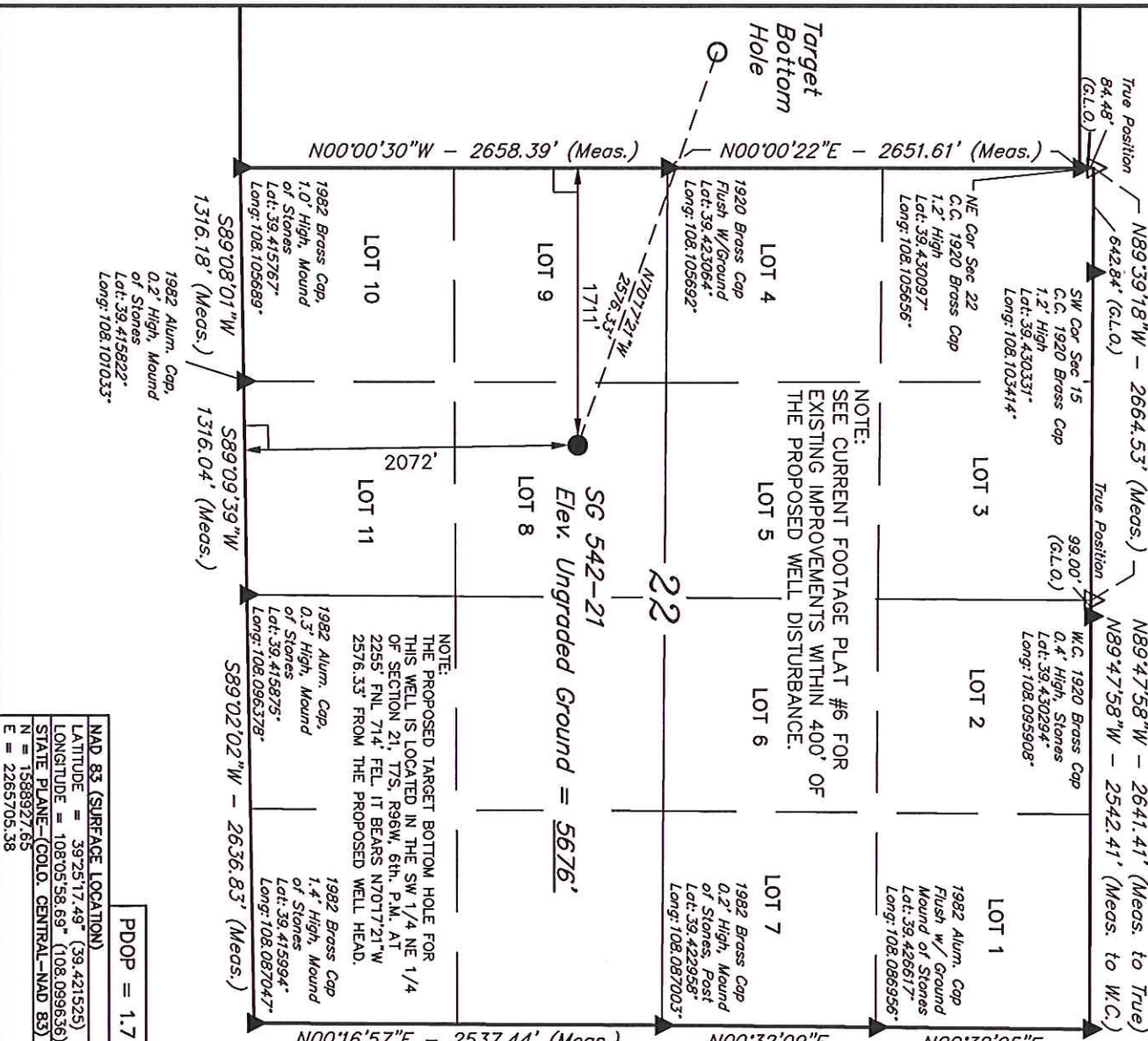
REGISTERED LAND SURVEYOR
REGISTRATION NO. 12492
STATE OF COLORADO 03-07-13

UTAH ENGINEERING & LAND SURVEYING
85 SOUTH 200 EAST - VERNAL, UTAH 84078
(435) 789-1017

SCALE 1" = 1000'
DATE SURVEYED: 04-24-13
DATE DRAWN: 05-06-13

PARTY B.J. B.B. T.B.
WEATHER COLD
FILE WPX Energy Rocky Mountain, LLC

PDOP = 1.7
NAD 83 (SURFACE LOCATION)
LATITUDE = 39°25'17.49" (39.421525)
LONGITUDE = 108°05'58.69" (108.099636)
STATE PLANE - (COLO. CENTRAL - NAD 83)
N = 1588927.65
E = 2265705.38



T7S, R96W, 6th. P.M.

WPX Energy Rocky Mountain, LLC

Well location, SG 542-21 (TARGET BOTTOM HOLE), located as shown in the SW 1/4 NE 1/4 of Section 21, T7S, R96W, 6th P.M., Garfield County, Colorado.

BASIS OF ELEVATION

SPOT ELEVATION AT THE NORTHWEST CORNER OF SECTION 30, T5S, R95W, 6th P.M. TAKEN FROM THE FORKED GULCH QUADRANGLE, COLORADO, GARFIELD COUNTY, 7.5 MINUTE SERIES (TOPOGRAPHICAL MAP) PUBLISHED BY THE UNITED STATES DEPARTMENT OF THE INTERIOR, GEOLOGICAL SURVEY. SAID ELEVATION IS MARKED AS BEING 5966 FEET.

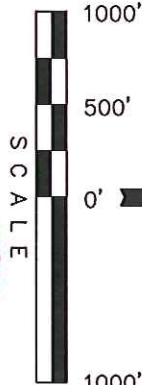
BASIS OF BEARINGS

BASIS OF BEARINGS IS A G.P.S. OBSERVATION.

LEGEND:

- └ = 90° SYMBOL
- = PROPOSED WELL HEAD.
- ▲ = SECTION CORNERS LOCATED.
- △ = SECTION CORNERS RE-ESTABLISHED. (Not Set on Ground.)

SG 542-21
SURFACE LOCATION



CERTIFICATE

THIS IS TO CERTIFY THAT THE ABOVE PLAT WAS PREPARED AND LOCATION AS SHOWN WAS STAKED ON THE GROUND FROM FIELD NOTES OF ACTUAL SURVEYS MADE BY ME OR UNDER MY SUPERVISION AND THAT THE SAME ARE TRUE AND CORRECT TO THE BEST OF MY KNOWLEDGE AND BELIEF.

REGISTERED LAND SURVEYOR
REGISTRATION NO. 12492
STATE OF COLORADO
06-07-13

UNTAH ENGINEERING & LAND SURVEYING
85 SOUTH 200 EAST - VERNAL, UTAH 84078
(435) 789-1017

SCALE 1" = 1000'
DATE SURVEYED: 04-24-13 DATE DRAWN: 05-06-13

PARTY B.J. B.B. T.B. REFERENCES G.L.O. PLAT

WEATHER COLD FILE

WPX Energy Rocky Mountain, LLC

NAD 83 (TARGET BOTTOM HOLE)
LATITUDE = 39°25'26.08" (39.423911)
LONGITUDE = 108°06'29.59" (108.108219)
STATE PLANE (COLO. CENTRAL-NAD 83)
N = 1589885.55
E = 2263306.73

LINE TABLE		
LINE	DIRECTION	LENGTH
L1	N89°56'21"W	509.15'

