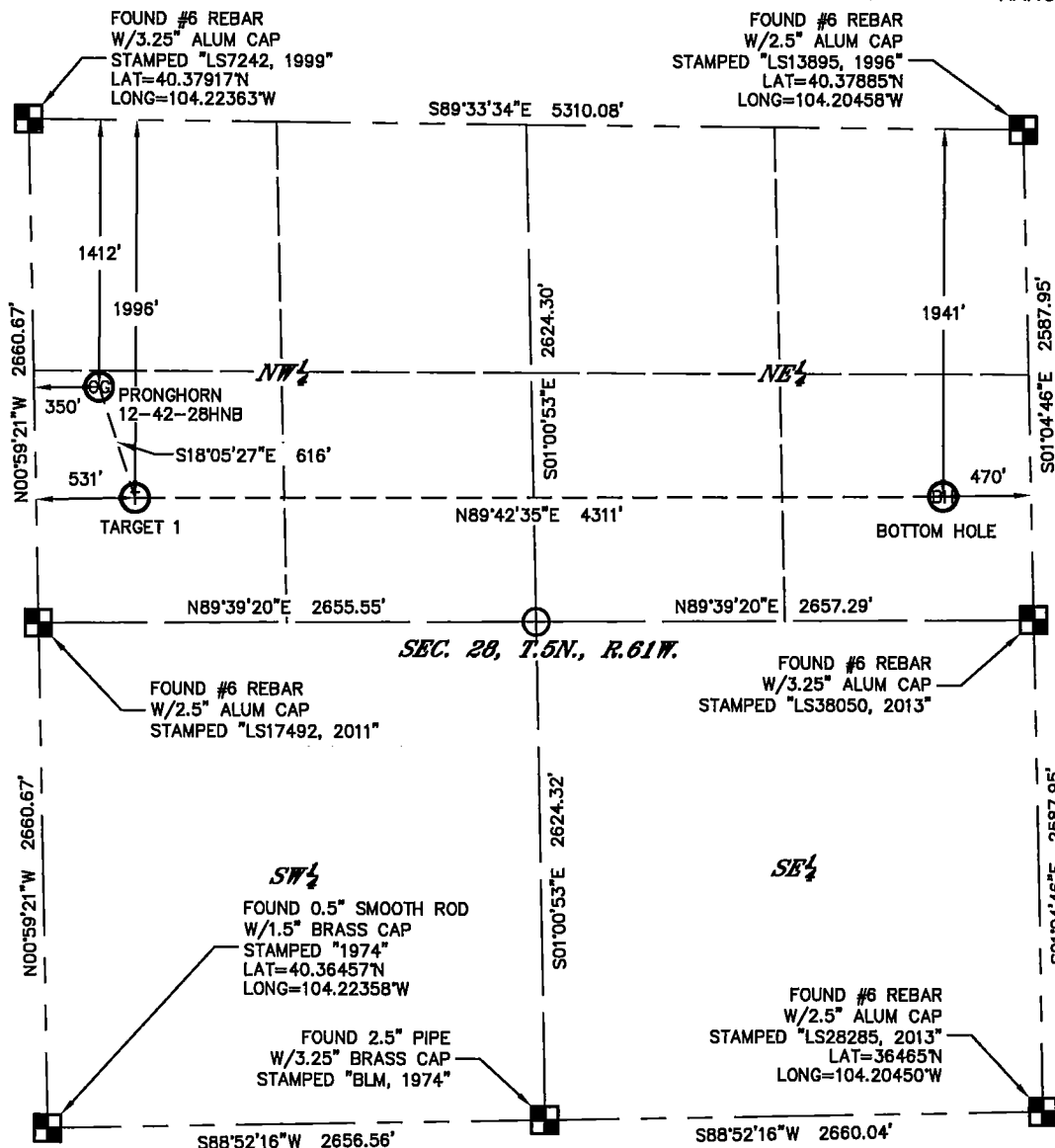


WELL LOCATION CERTIFICATE

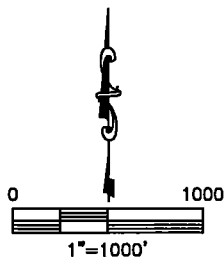
PRONGHORN 12-42-28HNB

THIS MAP DOES NOT REPRESENT A BOUNDARY SURVEY

SECTION: 28
TOWNSHIP: 5N
RANGE: 61W

In accordance with a request from RANDY EDELEN with BONANZA CREEK ENERGY, INC., King Surveyors has determined the surface location of PRONGHORN 12-42-28HNB to be 1412' from the NORTH line and 350' from the WEST line and the bottom hole to be 1941' from the NORTH line and 470' from the EAST line, as measured at right angles, from the section lines of Section 28, Township 5 North, Range 61 West of the Sixth Principal Meridian, County of Weld, State of Colorado.

I hereby state that this Well Location Certificate was prepared by me, or under my direct supervision, that the fieldwork was completed on 10-3-2013, for and on behalf of BONANZA CREEK ENERGY, INC., that this is not a Land Survey Plat or an Improvement Survey Plat, and that it is not to be relied upon for establishment of fence, building, or other future improvement lines.



NOTES:

- 1) Bearings shown are Grid Bearings of the Colorado State Plane Coordinate System, North Zone, North American Datum 1983. The lineal dimensions as contained herein are based upon the "U.S. Survey Foot."
- 2) Ground elevations are based on an observed GPS elevation (NAVD 1988 DATUM).
- 4) IMPROVEMENTS: See LOCATION DRAWING for all visible improvements within 500' of the disturbed area.
- 5) SURFACE USE: PASTURE/PRAIRIE
- 6) INSTRUMENT OPERATOR: AARON LUND

NOTICE

According to Colorado law, you must commence any legal action based upon any defect in this W.L.C. within three years after you first discover such defect. In no event, may any action based upon any defect in this survey be commenced more than ten years after the date of the certificate shown hereon. (13-80-105 C.R.S.)

LEGEND

- = FOUND ALIQUOT MONUMENT AS DESCRIBED
- = CALCULATED POSITION

SURFACE LOCATION

LATITUDE: 40.37528°N
LONGITUDE: 104.22236°W
PDOP: 1.3
ELEV: 4616'
1/4, 1/4: SW 1/4 NW 1/4
NEAREST PROPERTY LINE: WEST

TARGET

LATITUDE: 40.37366°N
LONGITUDE: 104.22171°W
1/4, 1/4: SW 1/4 NW 1/4

BOTTOM HOLE

LATITUDE: 40.37355°N
LONGITUDE: 104.20624°W
1/4, 1/4: SE 1/4 NE 1/4

33642
Lawrence S. Peper, Jr. on Behalf of King Surveyors
Colorado Licensed Professional Land Surveyor #33642

PROJECT#: 2013597