



Scale 1:240 (5"=100') Imperial  
Measured Depth Log

Well Name: Vonderlage 29C-31HZ  
 Location: Weld County, CO.  
 License Number: 051233601600  
 Spud Date: 07/17/13  
 Surface Coordinates: 491'FSL & 1770'FWL, SEC.31, T3N-R66W  
 Region: DJ basin  
 Drilling Completed:  
 Bottom Hole Coordinates: 460'FNL & 1584'FWL, SEC.31, T3N-R66W  
 Ground Elevation (ft): 4843' K.B. Elevation (ft): 4859'  
 Logged Interval (ft): 6795' To: 7325' Total Depth (ft):  
 Formation: Codell  
 Type of Drilling Fluid: Water Based Mud

Printed by MUD.LOG from WellSight Systems 1-800-447-1534 www.WellSight.com

#### OPERATOR

Company: Anadarko Petroleum Corporation  
 Address: Granite Tower  
 1099 18th Street, #1800  
 Denver, CO 80202

#### GEOLOGIST

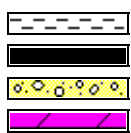
Name: Aaron Wiggins / Kyle Pickard  
 Company: Great Divide Consulting, Inc  
 Address: P.O. Box 630263  
 Highlands Ranch, CO 80163

#### Comments

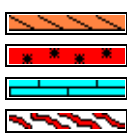
#### ROCK TYPES



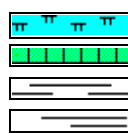
Anhy  
Bent  
Brec  
Cht



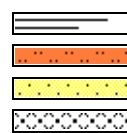
Clyst  
Coal  
Congl  
Dol



Gyp  
Igne  
Lmst  
Meta



Mrlst  
Salt  
Shale  
Shcol



Shgy  
Sltst  
Ss  
Till

# ACCESSORIES

## MINERAL

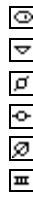
Anhy  
Arggrn  
Arg  
Bent  
Bit  
Brecfrag  
Calc  
Carb  
Chtdk  
Chltt  
Dol  
Feldspar  
Ferrpel  
Ferr  
Glau



Gyp  
Hvymin  
Kaol  
Marl  
Minxl  
Nodule  
Phos  
Pyr  
Salt  
Sandy  
Silt  
Sil  
Sulphur  
Tuff

## FOSSIL

Algae  
Amph  
Belm  
Bioclst  
Brach  
Bryozoa  
Cephal  
Coral  
Crin  
Echin  
Fish  
Foram  
Fossil  
Gastro  
Oolite



Ostra  
Pelec  
Pellet  
Pisolite  
Plant  
Strom

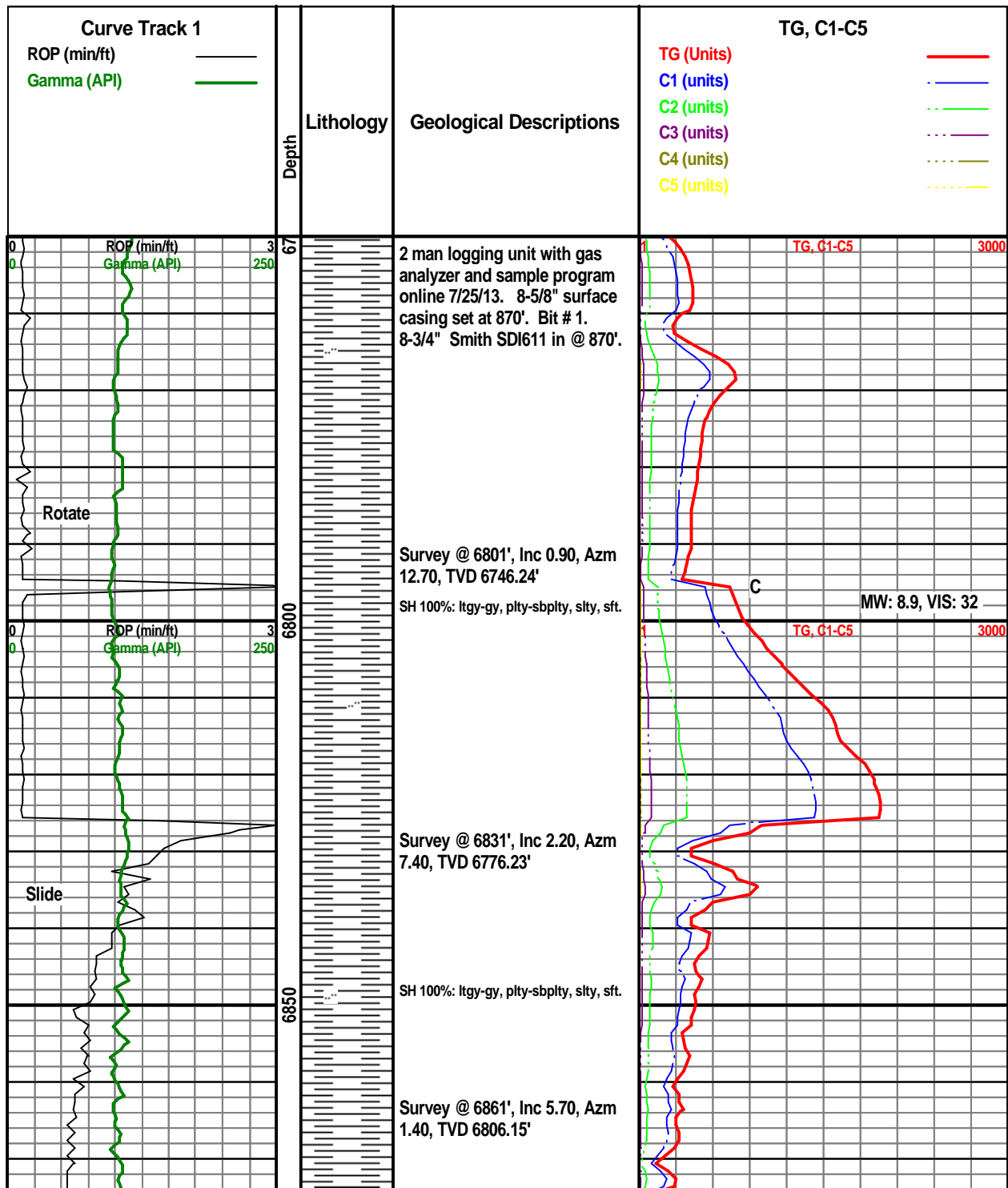
## STRINGER

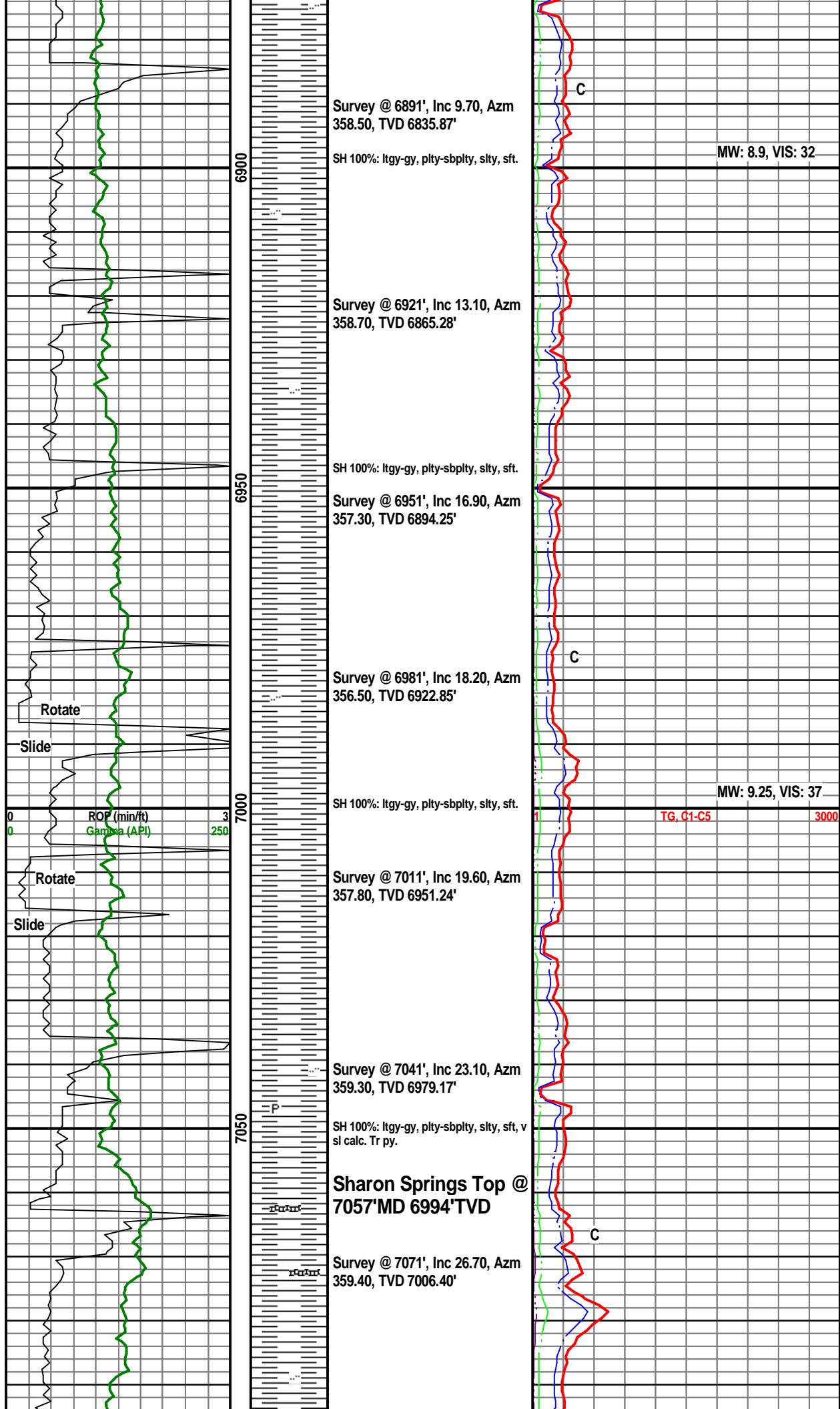
Anhy  
Arg  
Bent  
Coal  
Dol  
Gyp  
Ls  
Mrst

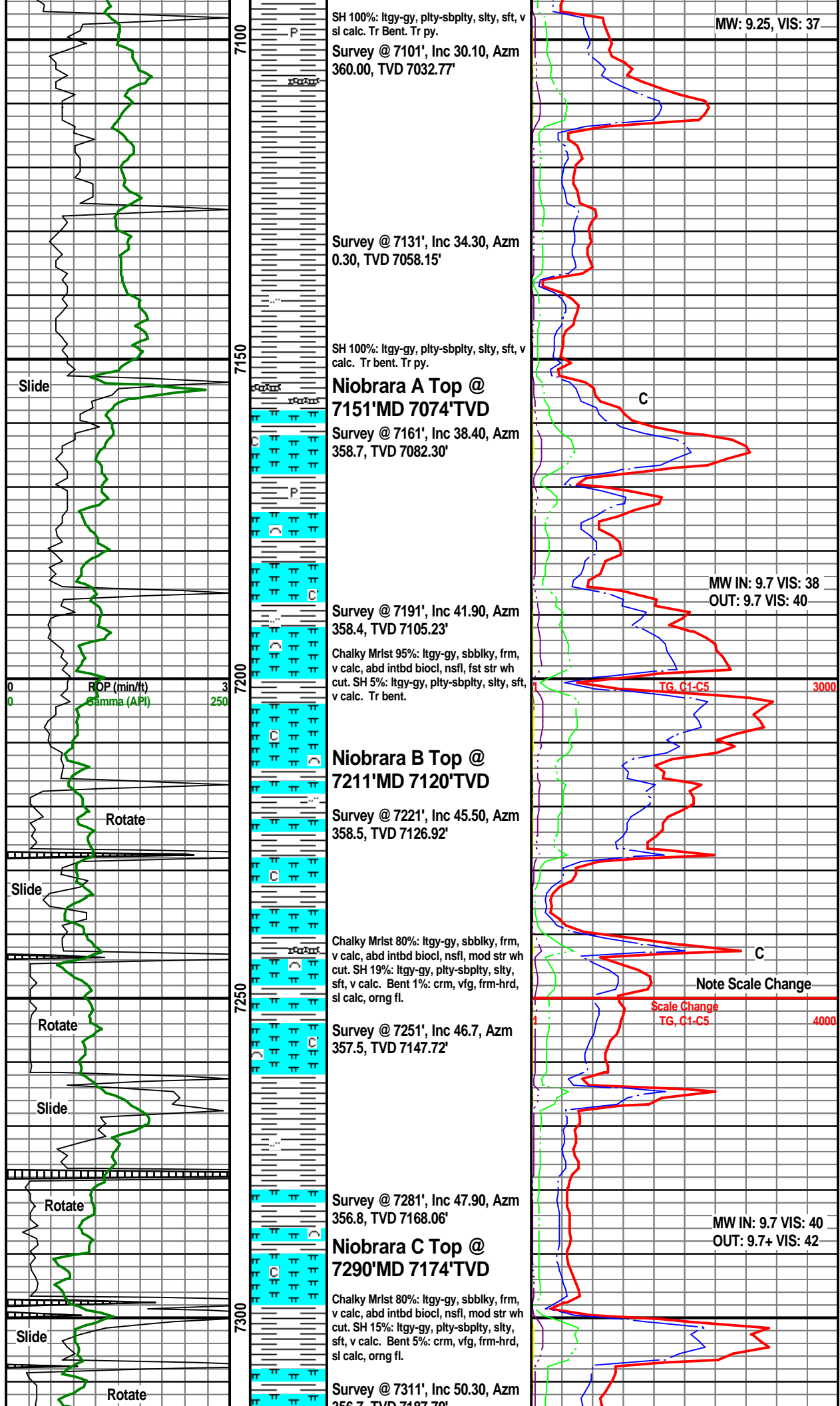
Sltstrg  
Ssstrg

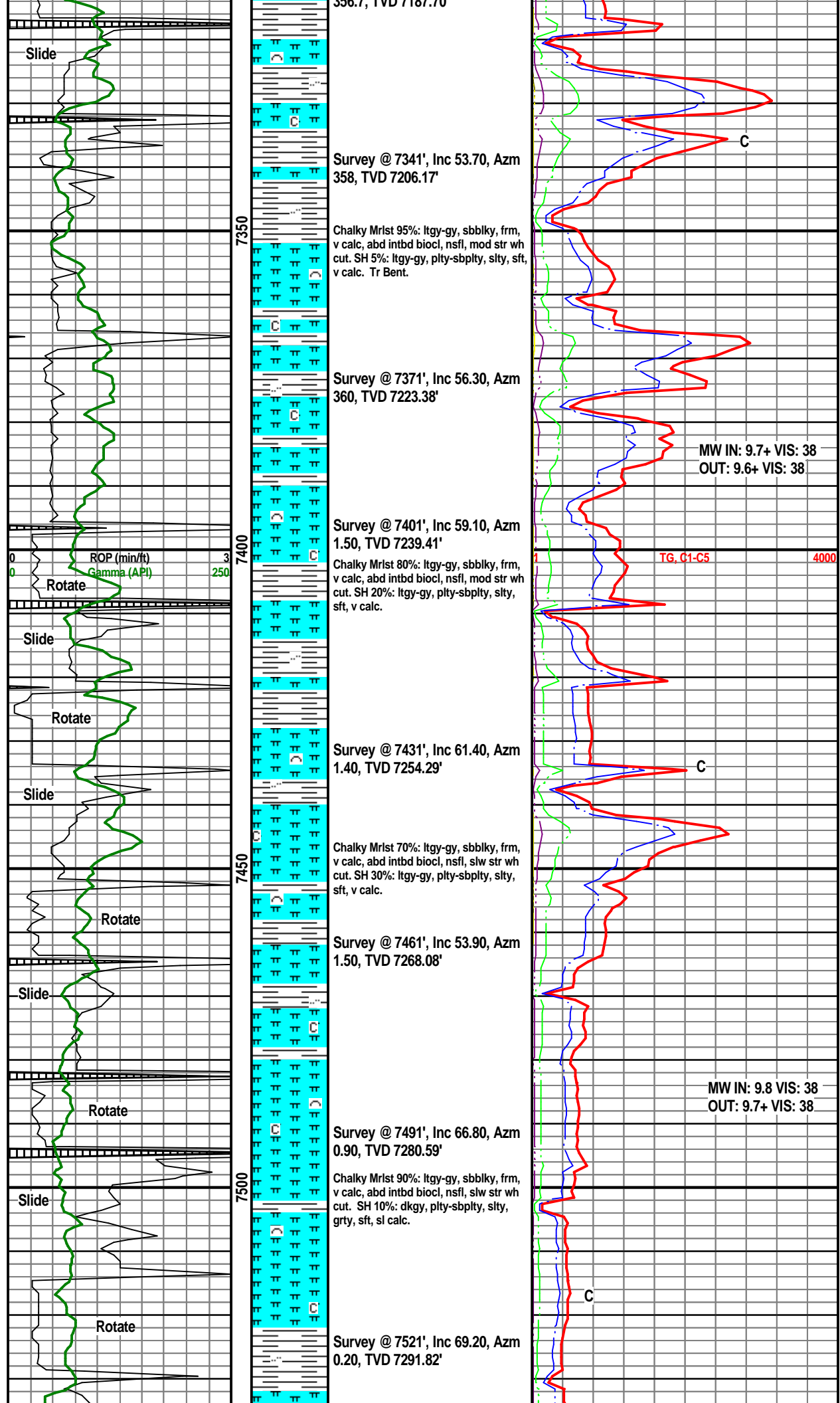
## TEXTURE

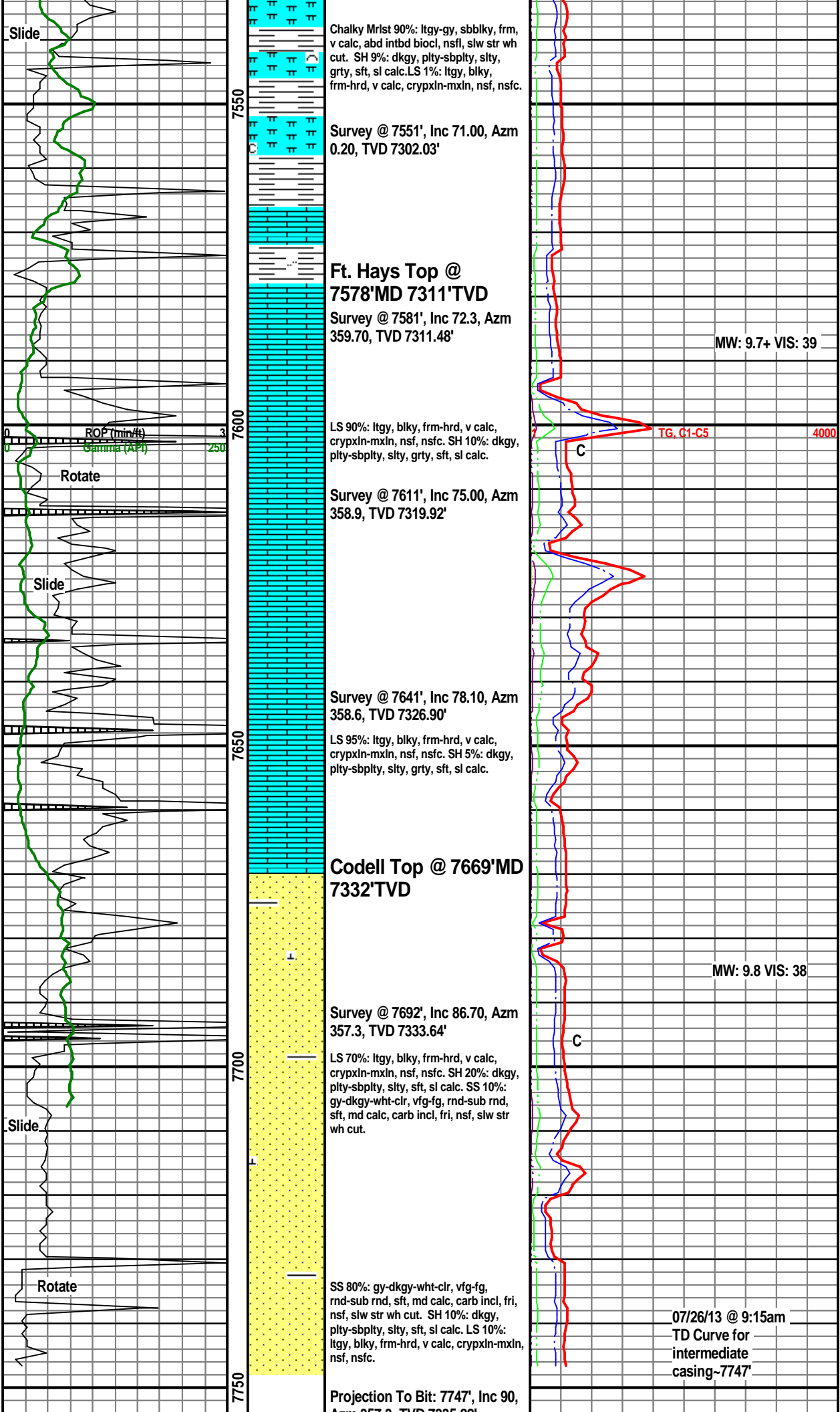
Boundst  
Chalky  
Cryxln  
Earthy  
Finexln  
Grainst  
Lithogr  
Microxln  
Mudst  
Packst  
Wackest











[illegible]