



5" = 100'
FEET MD

COMPANY : ANADARKO PETROLEUM
WELL : VONDERLAGE 29C-31HZ
FIELD : DJ WATTENBERG
COUNTRY : WELD
STATE : CO
COUNTRY : USA
API WELL No.: 05-123-36016-00

OTHER SERVICES

DEPTH REF. :	ROTARY TABLE
ELEVATION :	13.00 ft (ROTARY TABLE - GROUND LEVEL)
ALTITUDE :	4843.00 ft (GROUND LEVEL - MEAN SEA LEVEL)

DEVIATION RECORD

HOLE SIZE	in	FROM	ft	TO	ft	INCLINATION	deg	FROM	ft	TO	ft
8 3/4		0		7930		00 - 17		0		6951	
6 1/8		7630		11781		17 - 90		6951		7766	
						90 +/- 3		7766		11781	
CASING RECORD											
CASING SIZE	in	FROM	ft	TO	ft						
7		0		7736							

LWD END DATE : 03-AUG-13 DEPTH : 11781 ft

RUN DATA

RUN NUMBER	1					
START DATE	01-AUG-13					
START TIME	18:20					
END DATE	03-AUG-13					
END TIME	22:30					
DEPTH IN ft	7938					
DEPTH OUT ft	11781					
LOG TOP ft	7728					
LOG BOTTOM ft	11741					
HOLE SIZE in	6 1/8					
MUD DATA @ ft	10476					
MUD TYPE	WATER BASED					
DENSITY lb/gal	9.70					
VISCOSITY s/qt	38					
pH	8.4					
FLUID LOSS cm3/30	7.2					
SALINITY ppm	1200					
Rm ohmm @ deg F	0.065 @ 80					
Rmf ohmm @ deg F	@					

REMARKS
ANADARKO PETROLEUM CORPORATION AFE# 2067268.DRL
PATHFINDER JOB #: 13CAS0202
ALL LOGGING DATA IS MEMORY ONLY UNLESS STATED OTHERWISE.
ALL REFERENCES TO LOG TOP, LOG BOTTOM, OR LOGGING TOOL DEPTH REFER TO THE GAMMA-RAY SENSOR UNLESS STATED OTHERWISE.
ALL ANNOTATIONS IN THE DEPTH TRACK ARE REFERENCED TO BIT DEPTH.
THIRD PARTY DEPTH TRACKING PROVIDED BY PASON.
RUN #1: 4 3/4" HDS-1L/AWR LOGGING RUN.
REMARK #1: GAMMA-RAY AND RESISTIVITY FROM 7728'-7895'MD (7335'-7332'TVD) ARE TRANSMITTED ONLY.
REMARK #2: GAMMA-RAY AND RESISTIVITY FROM 7728-7897'MD (7735'-7332'TVD) LOGGED WHILE REAMING 48 HOURS AFTER DRILLING. ROP IS NOT AVAILABLE OVER THE CORRESPONDING INTERVAL.
NOTICE - All interpretations are opinions based on inferences from electrical or other measurements and we do not guarantee the accuracy or correctness of any interpretations. We shall not, except in the case of gross or willful negligence on our part, be liable or responsible for loss, costs, damages or expenses incurred or sustained by anyone as a result of any interpretations made by one of our officers, agents or employees. These interpretations are also subject to our General Terms and Conditions as set out in our current Price Schedule.
PATHFINDER - A Schlumberger Company
Version No : RX5 V6.04D Release 13Dec2012
Plot Time : 04-Aug-2013 00:08

[illegible]

SEE REMARK #1

7" CASING

7800

92.7 356.1
1 7334

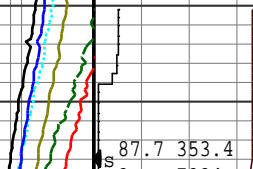
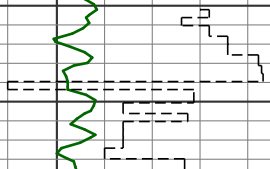
SEE REMARK #2

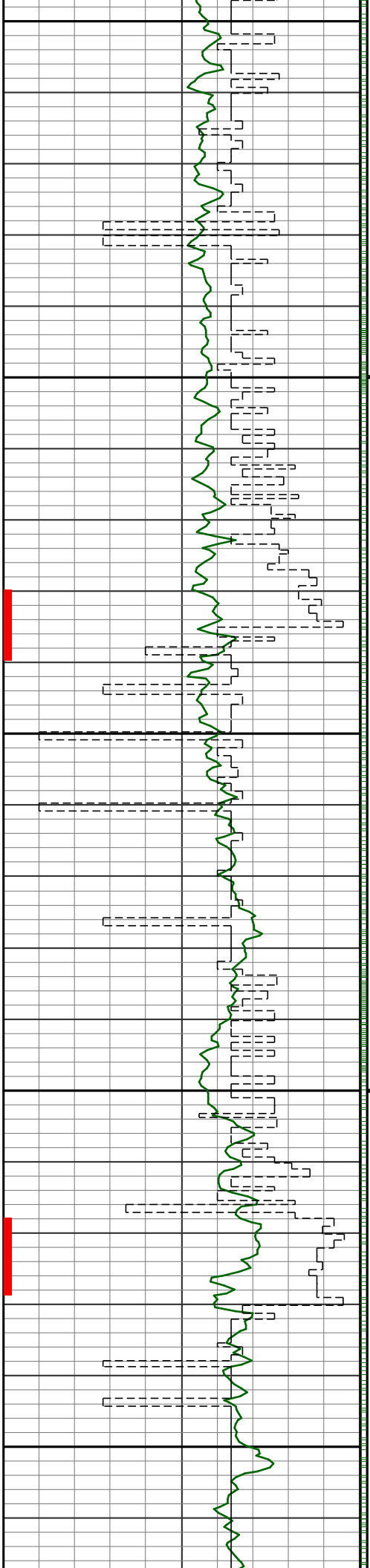
7900

89.9 355.1
2 7332

R
U
N

87.7 353.4





#1

8000

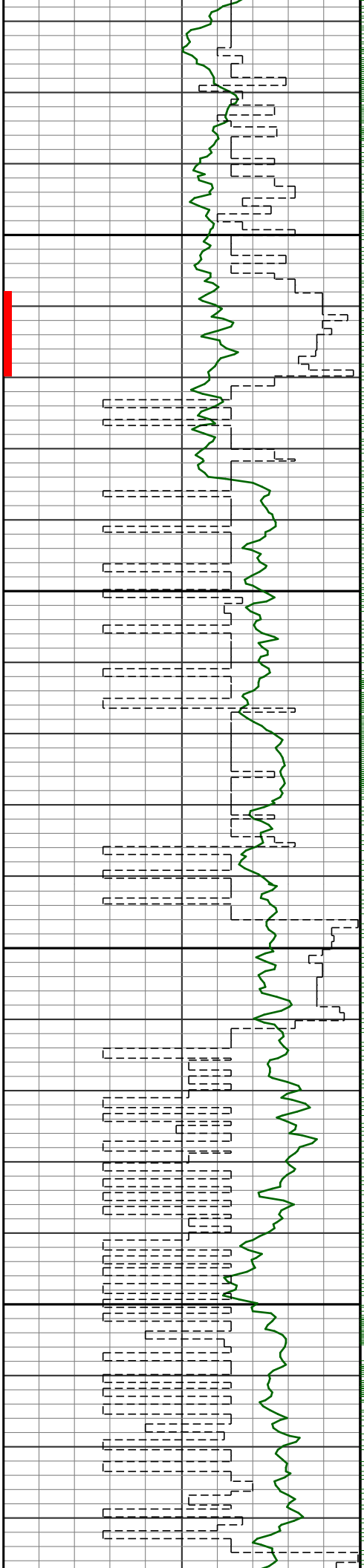
8100



3 7334

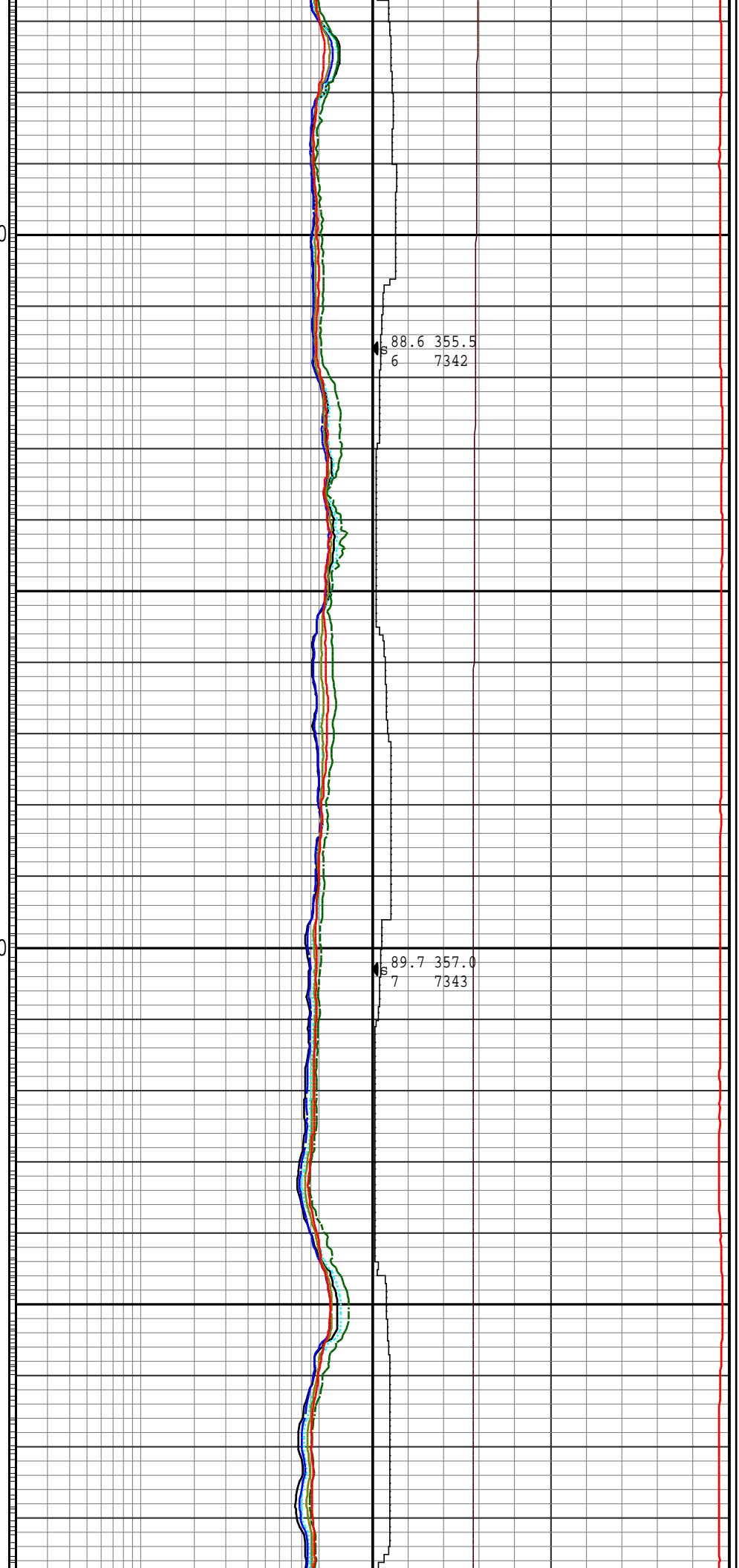
S 88.2 354.1
4 7337

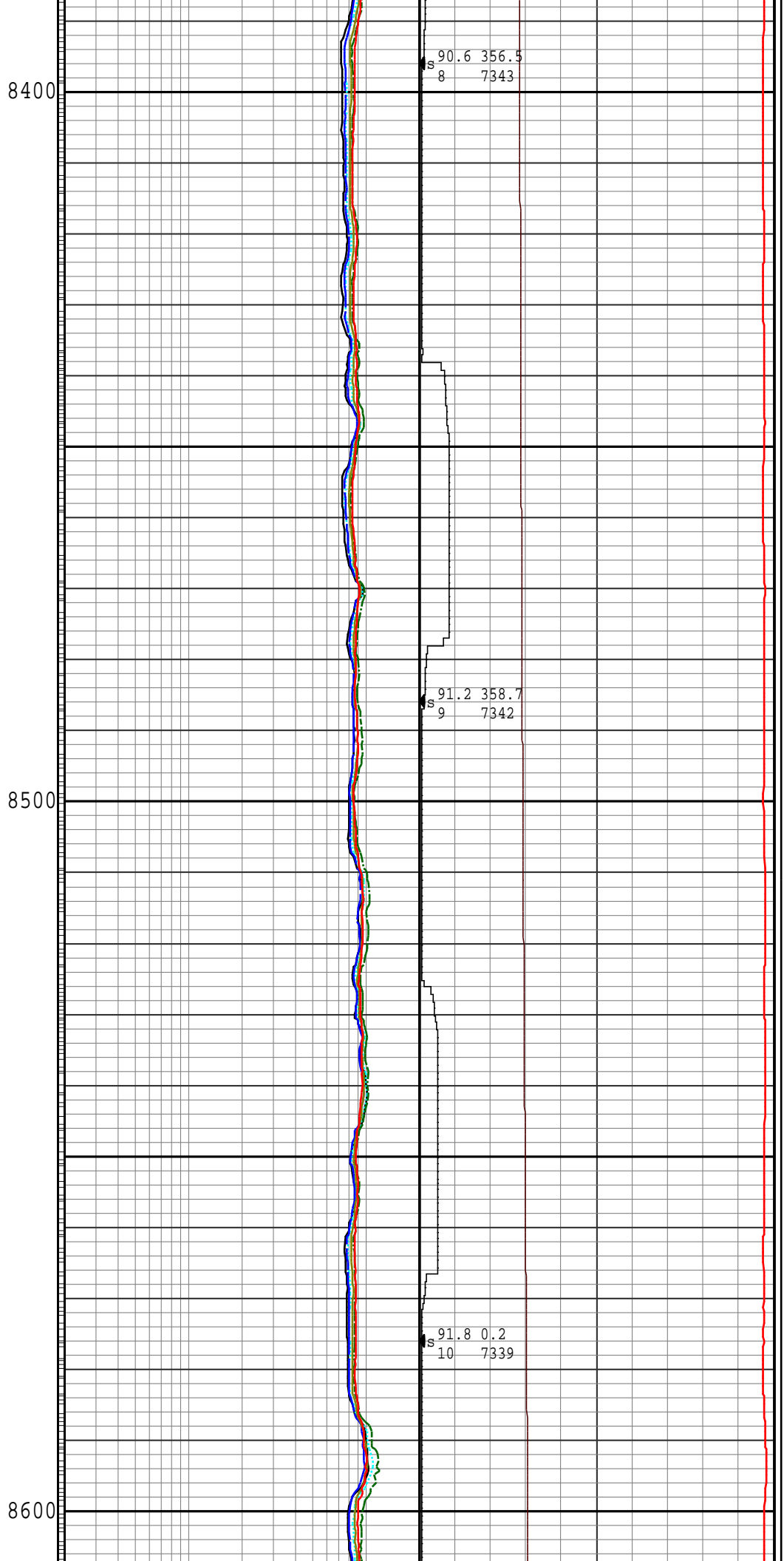
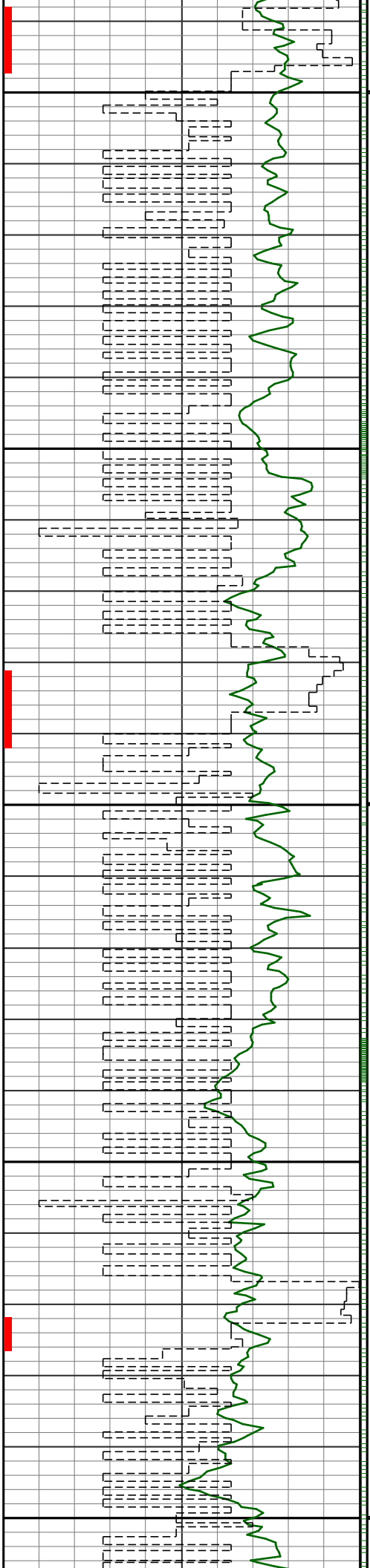
S 88.6 353.7
5 7340

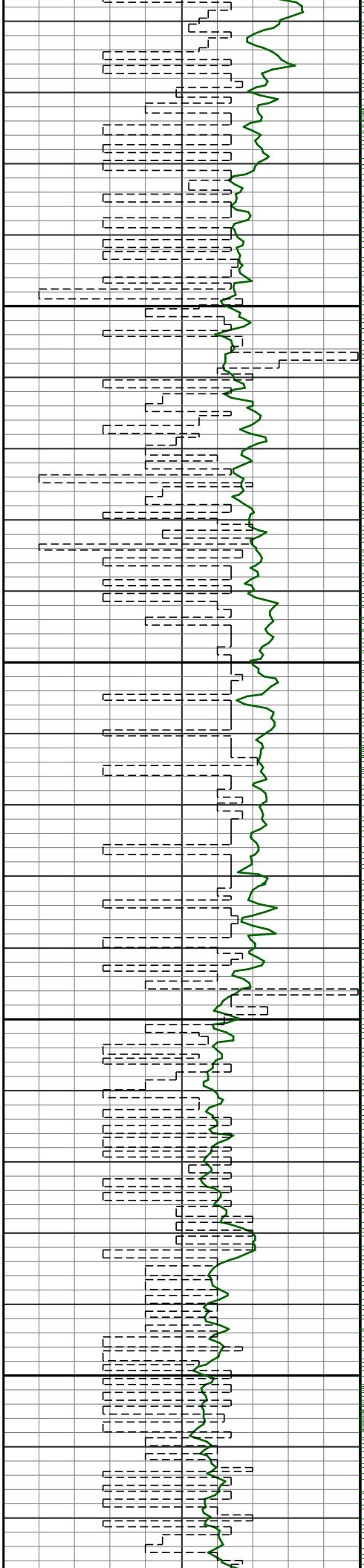


8200

8300

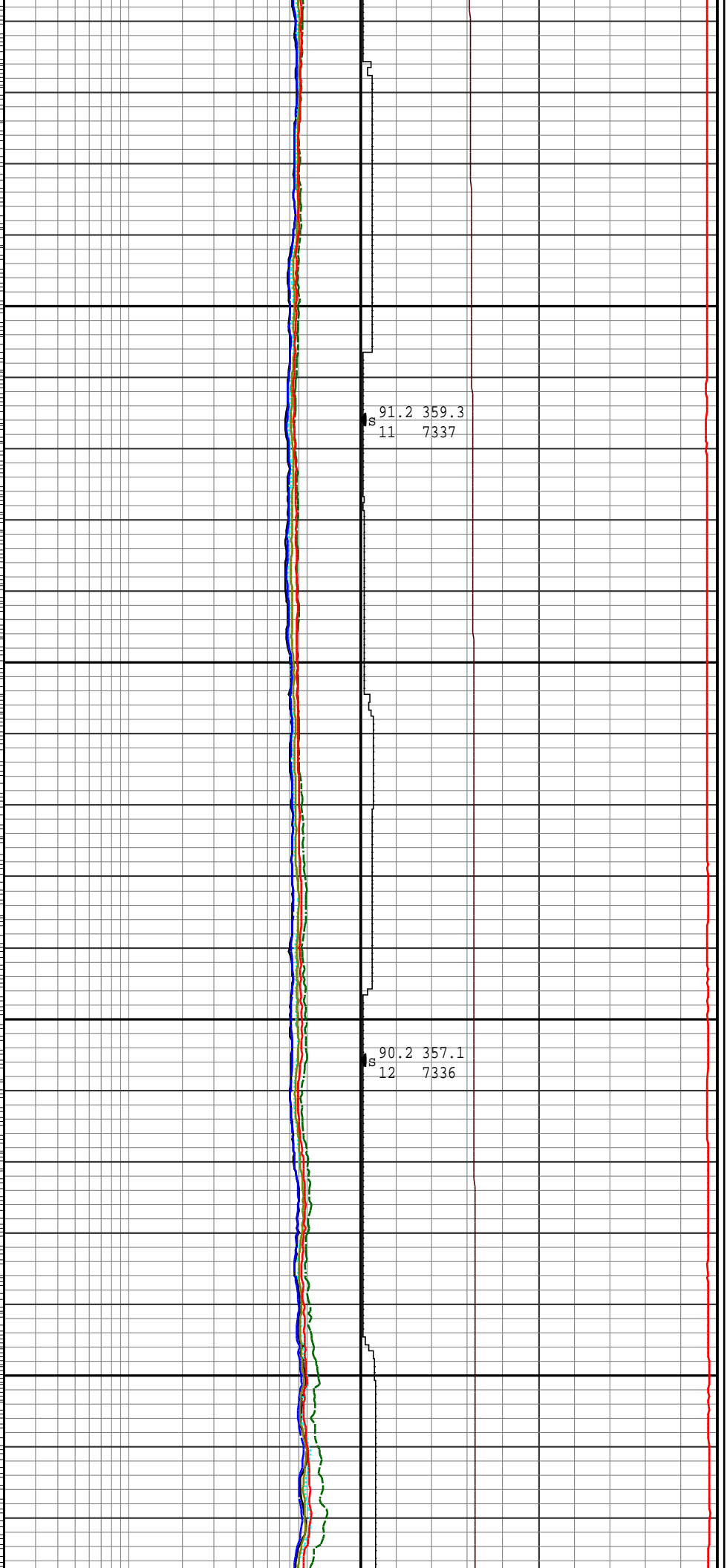


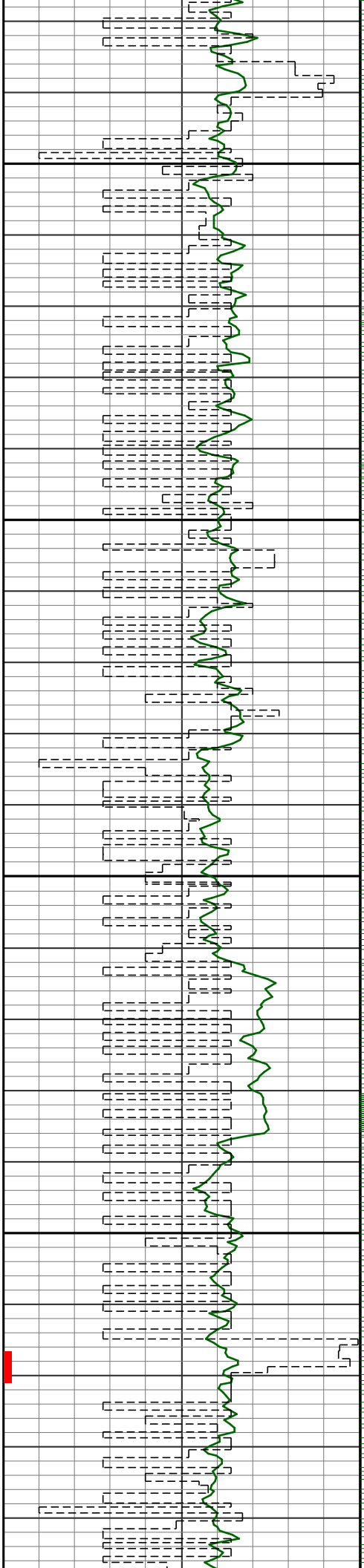




8700

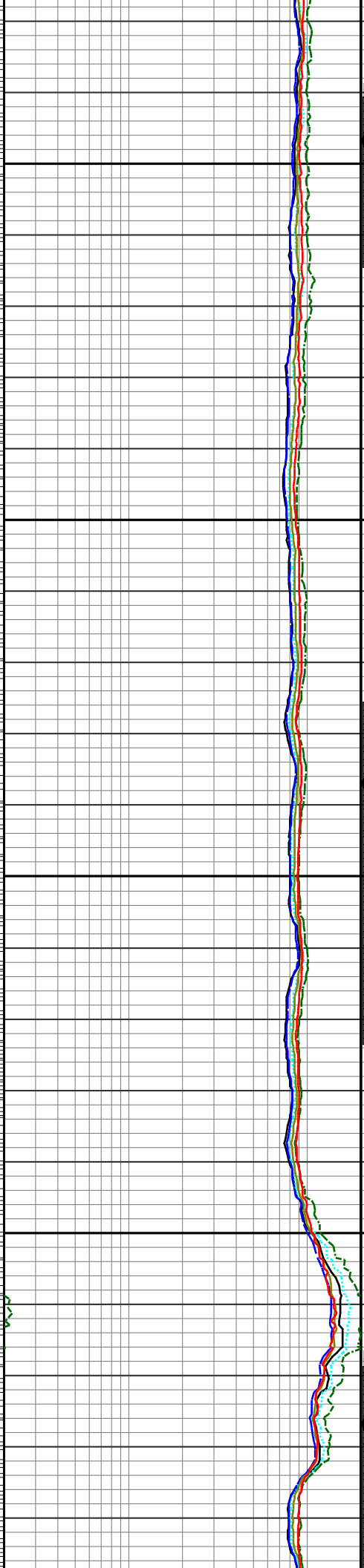
8800





8900

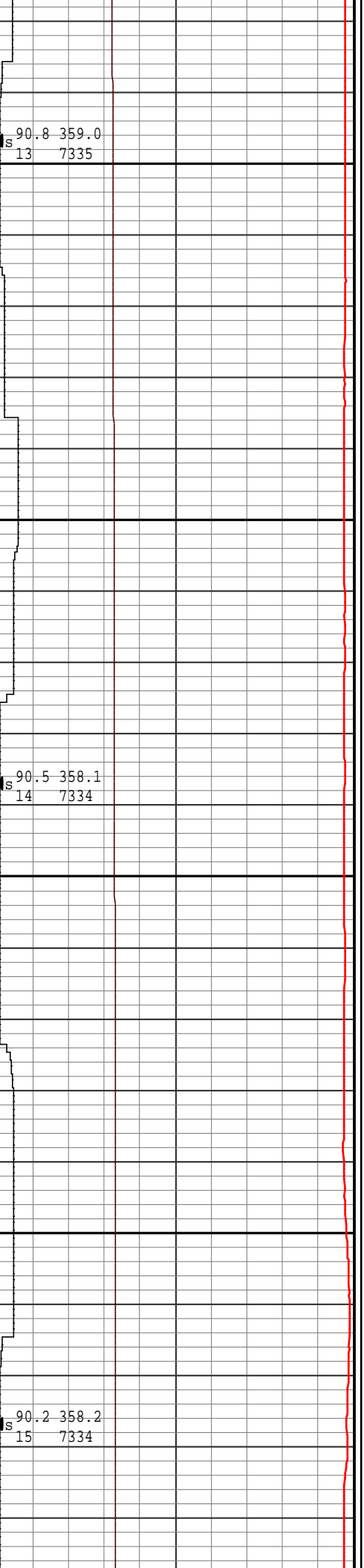
9000

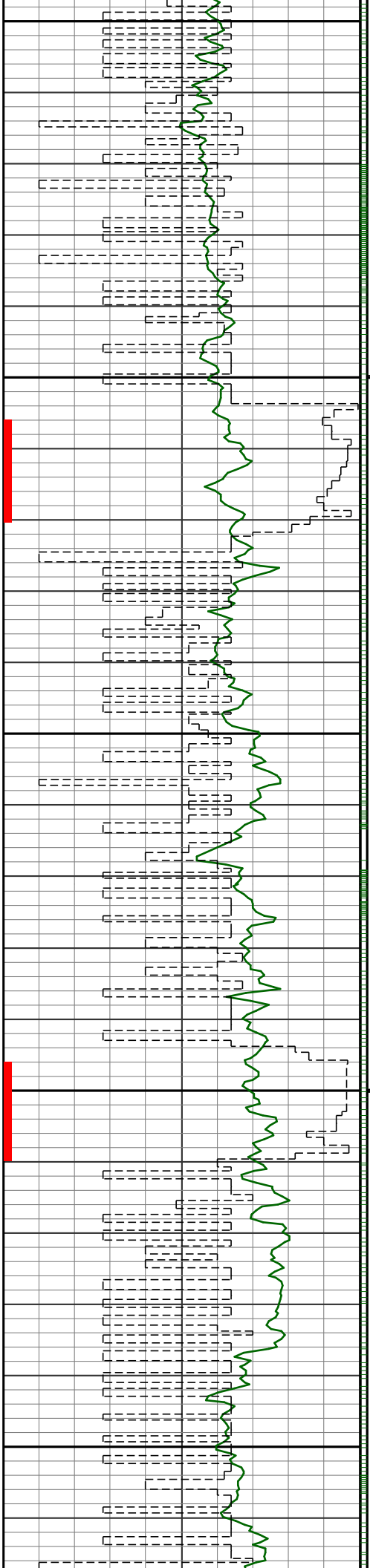


S 90.8 359.0
13 7335

S 90.5 358.1
14 7334

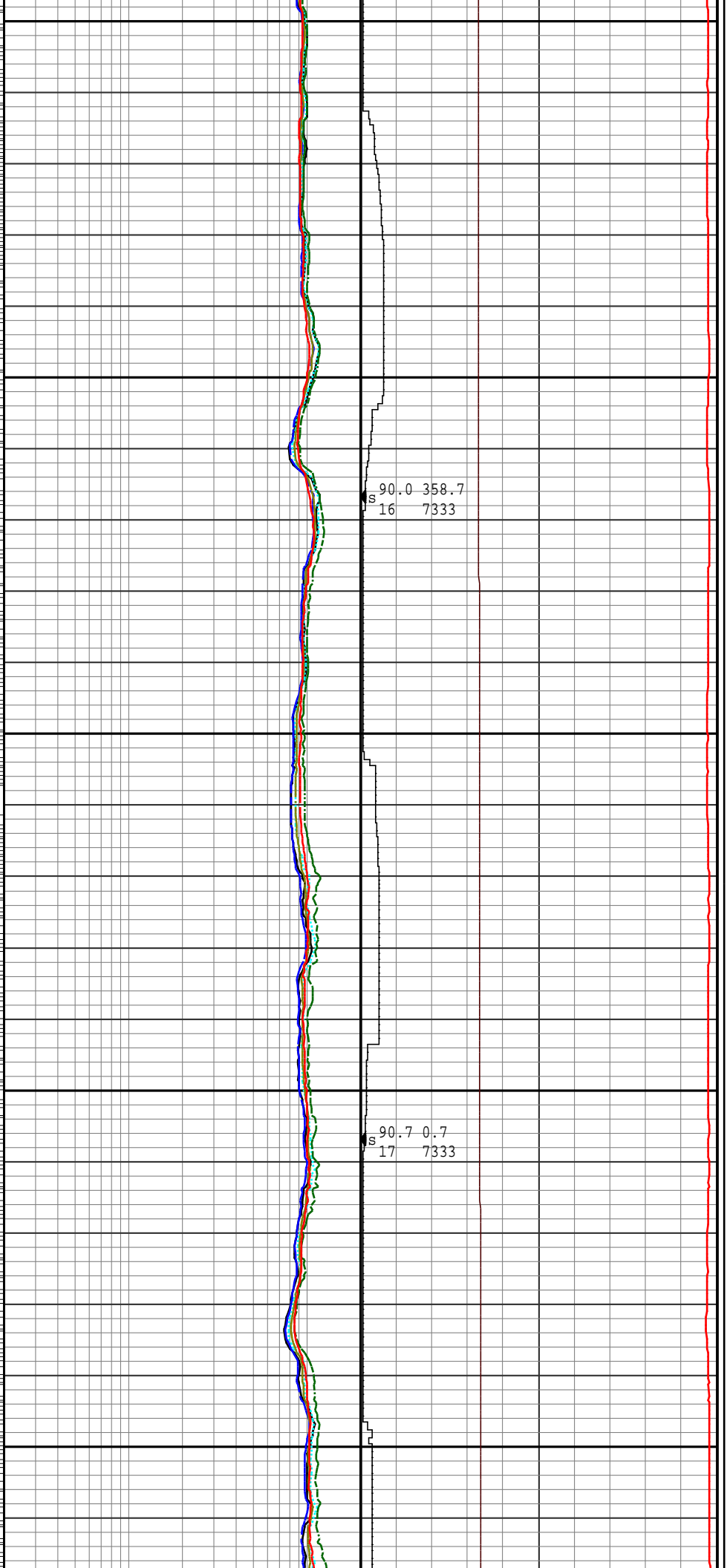
S 90.2 358.2
15 7334





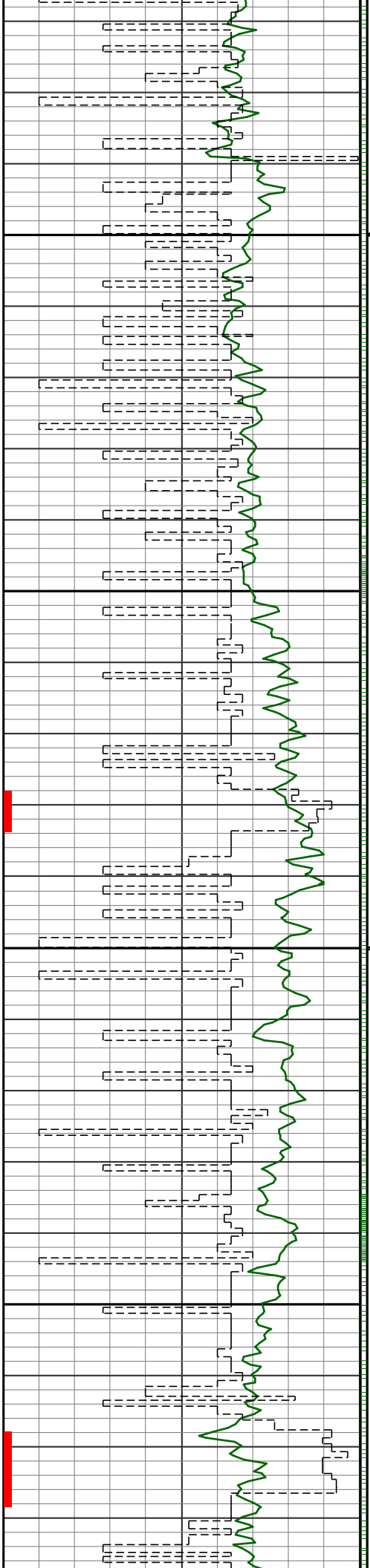
9100

9200



S 90.0 358.7
16 7333

S 90.7 0.7
17 7333



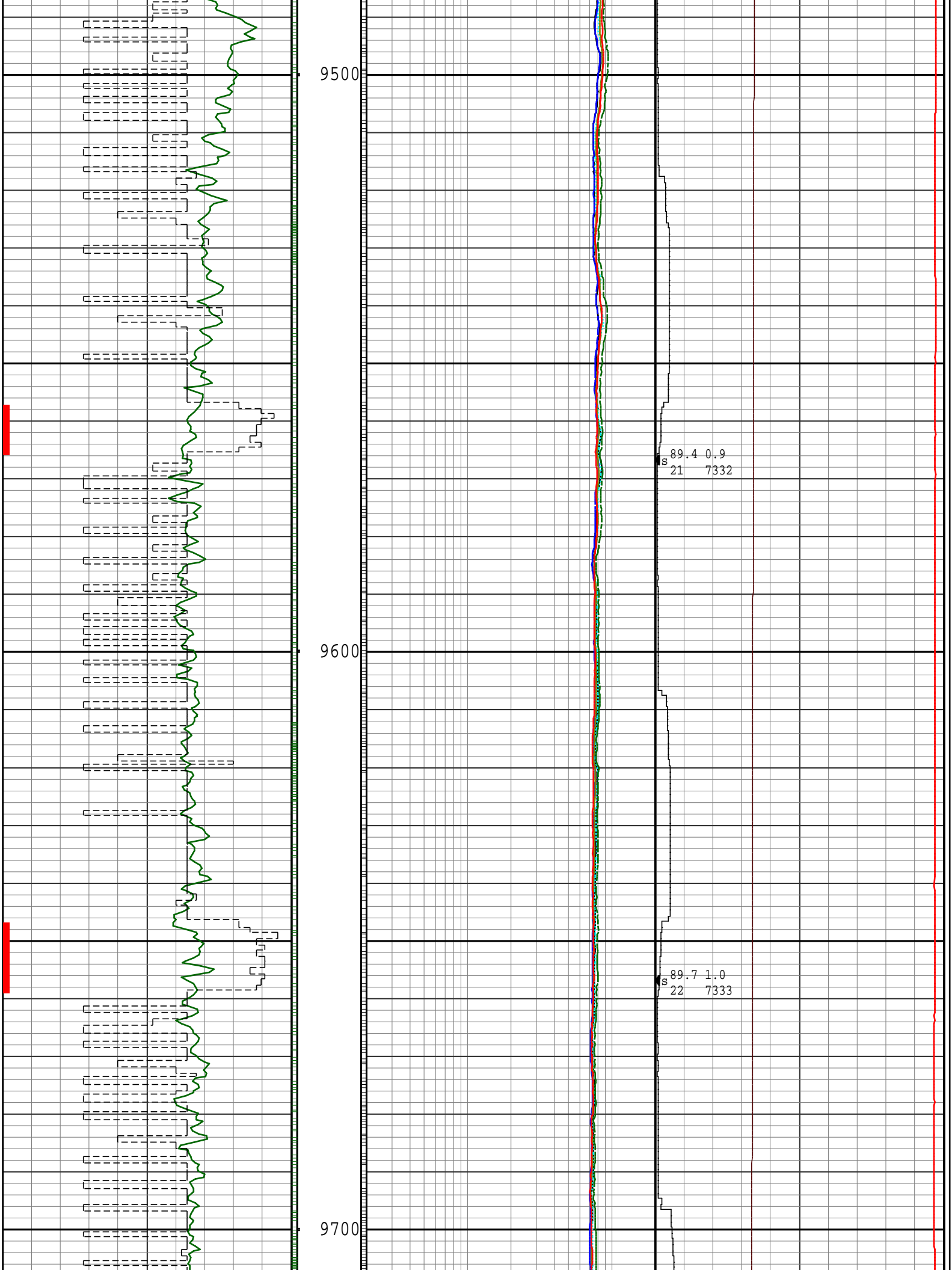
9300

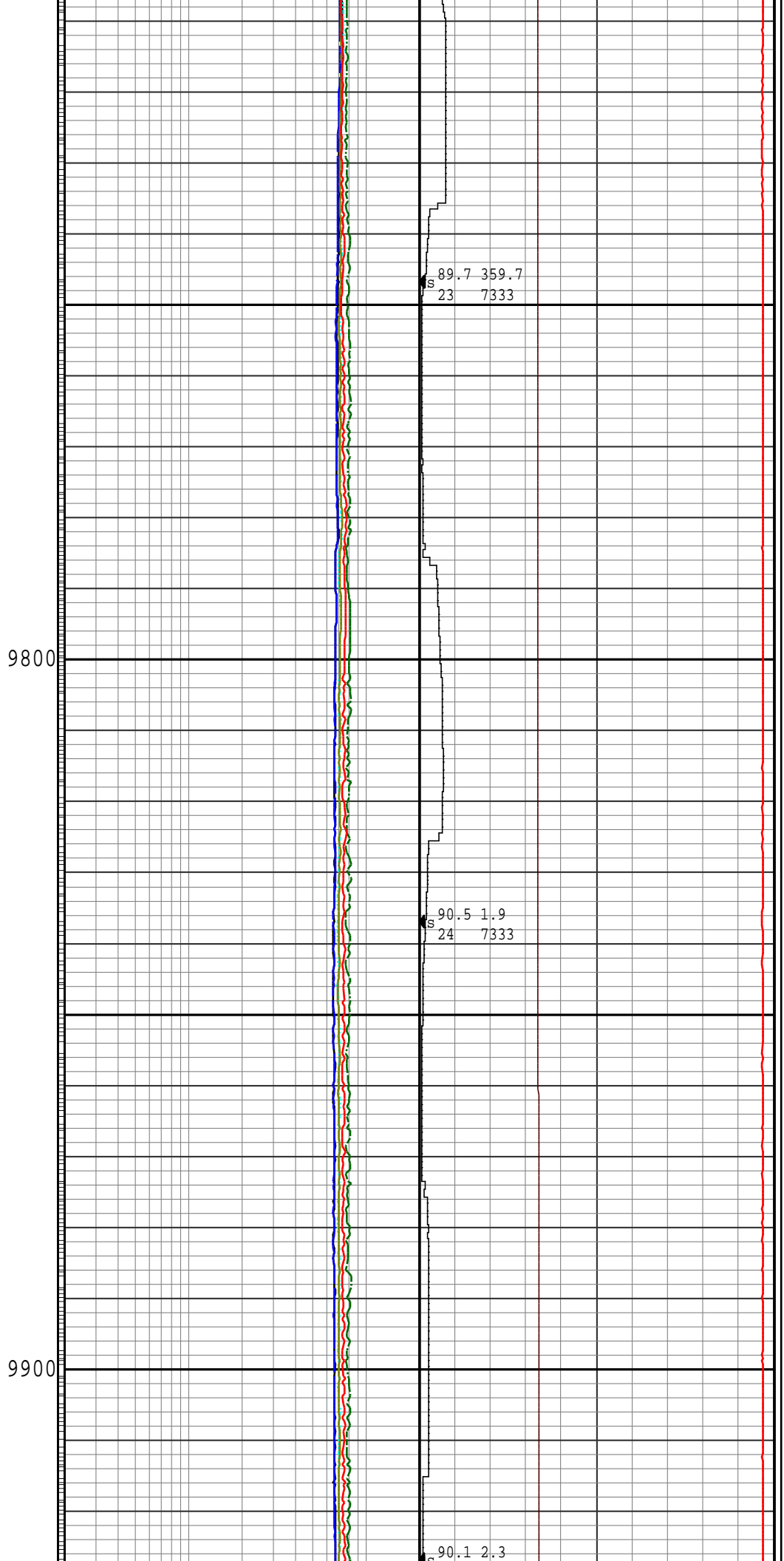
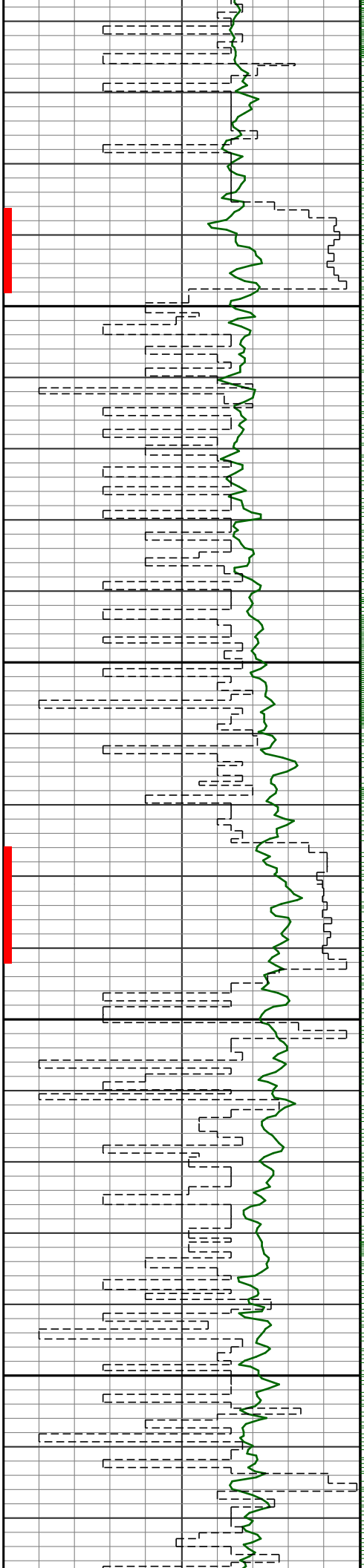
9400

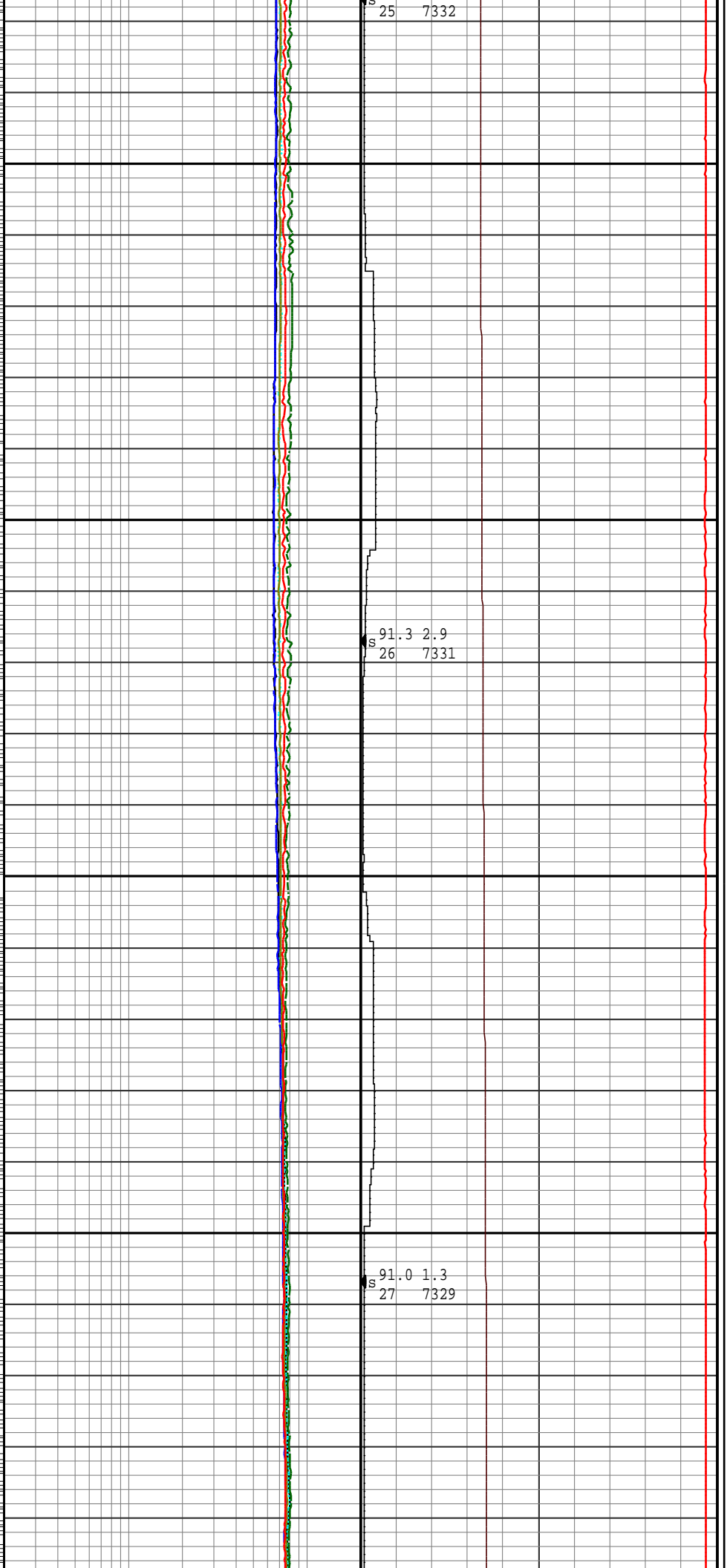
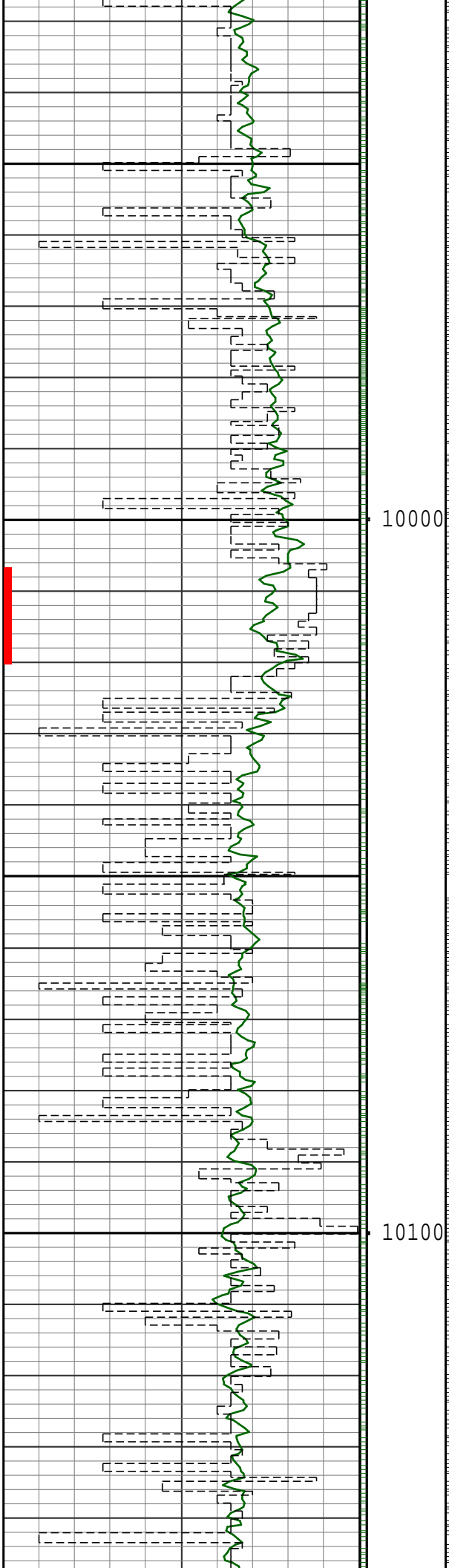
S 90.6 359.2
18 7332

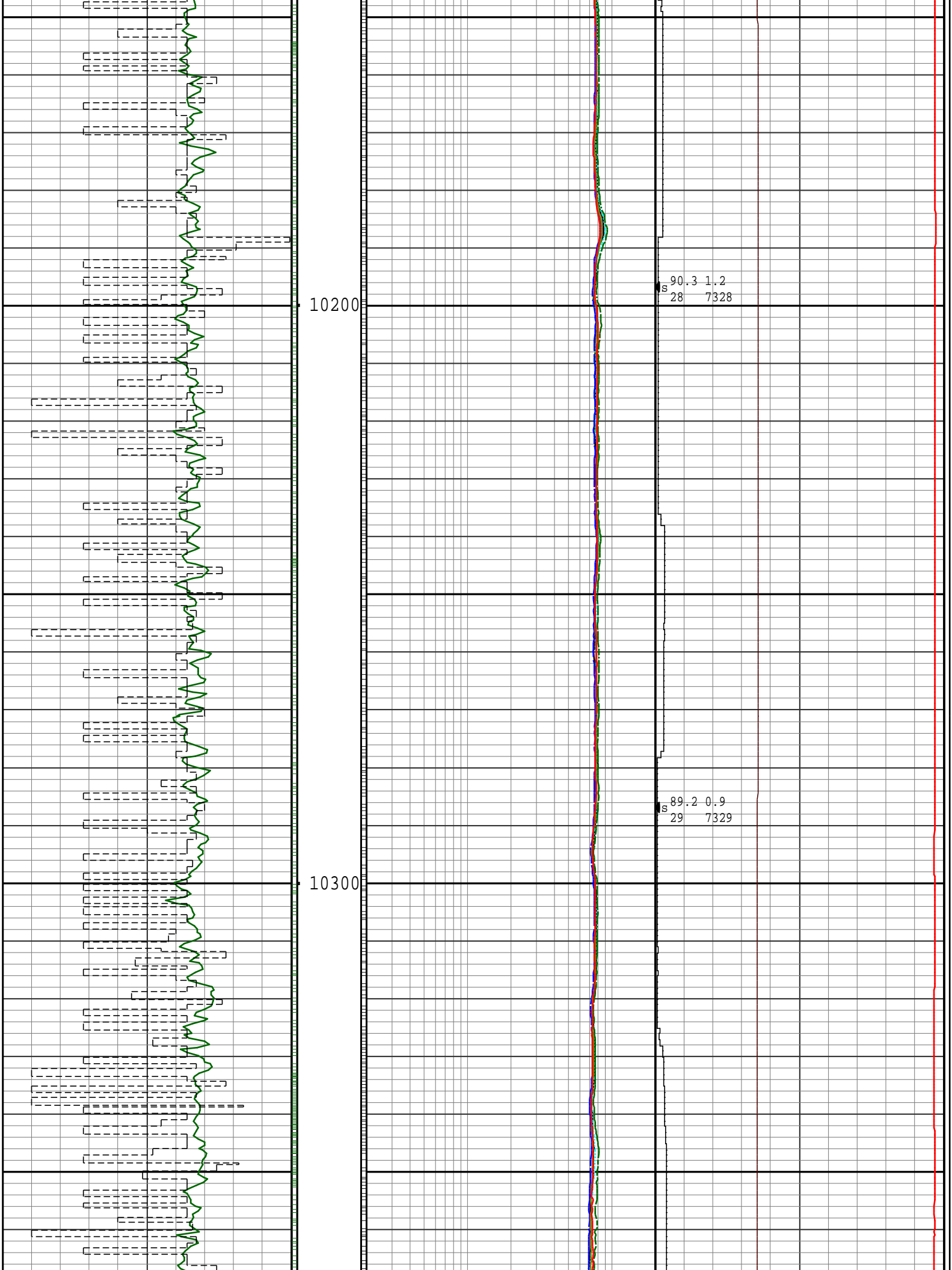
S 90.0 359.5
19 7331

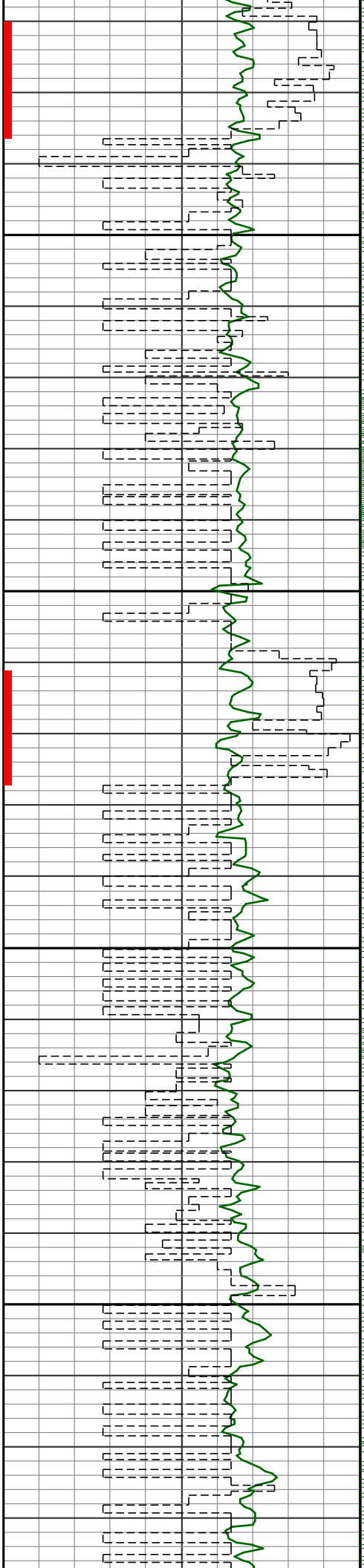
S 90.0 359.6
20 7331





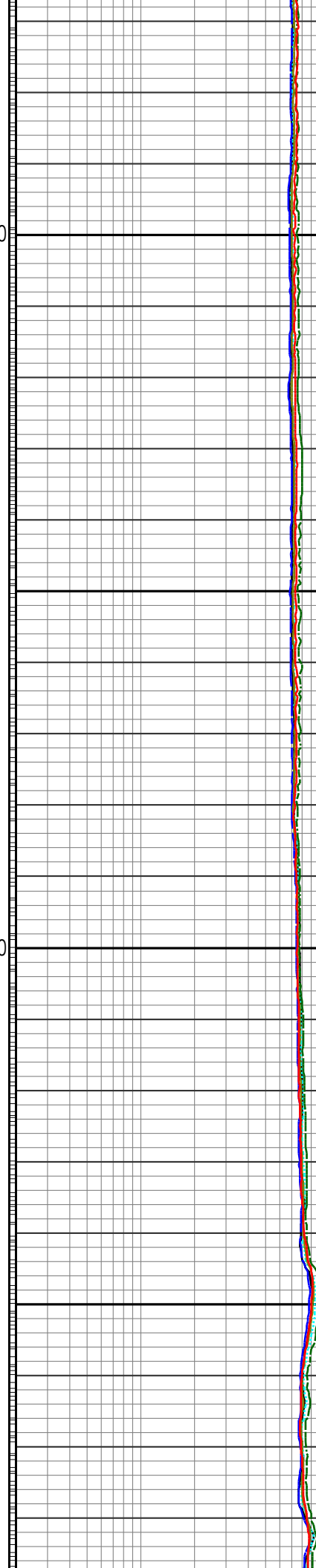






10400

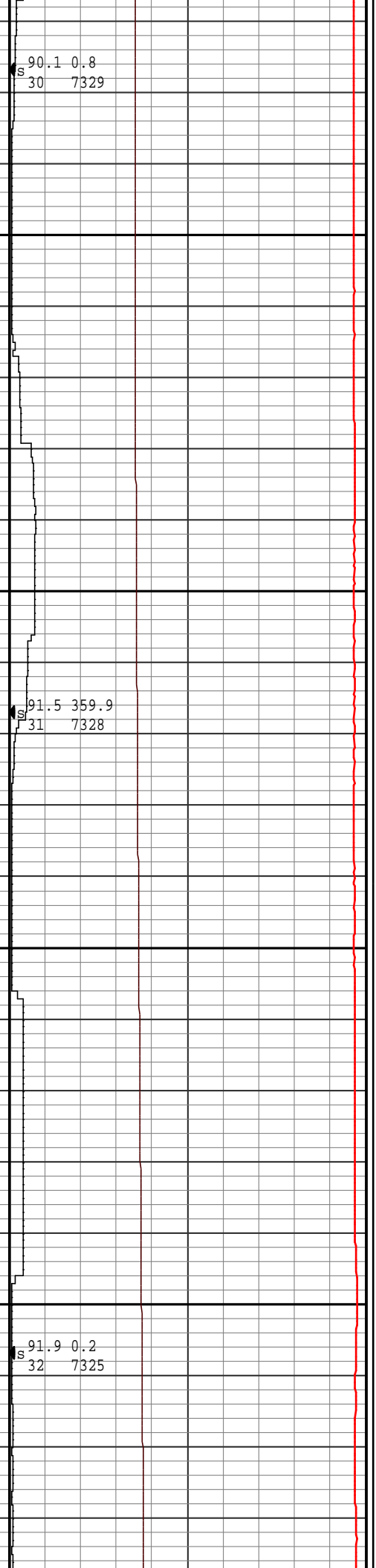
10500

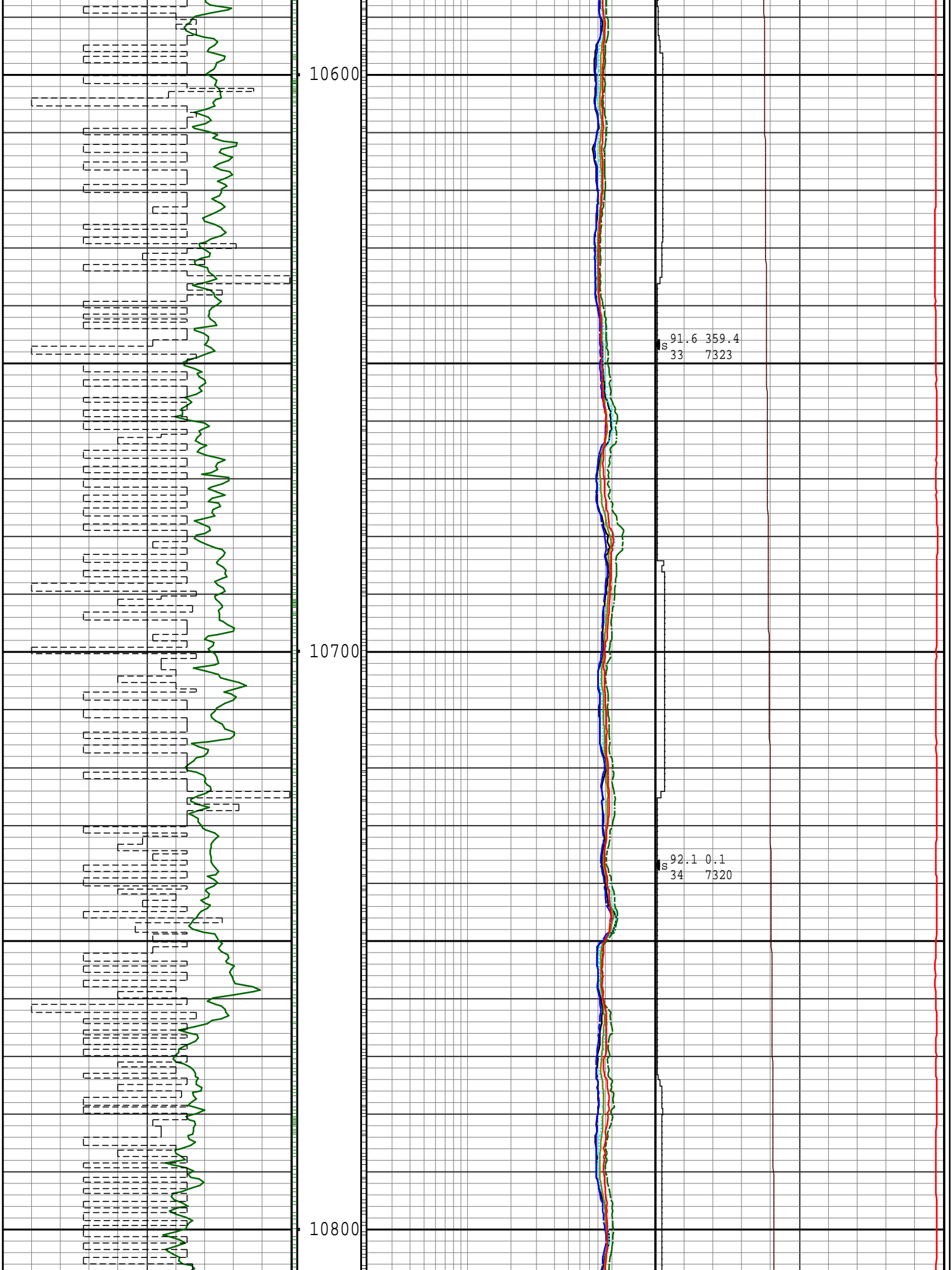


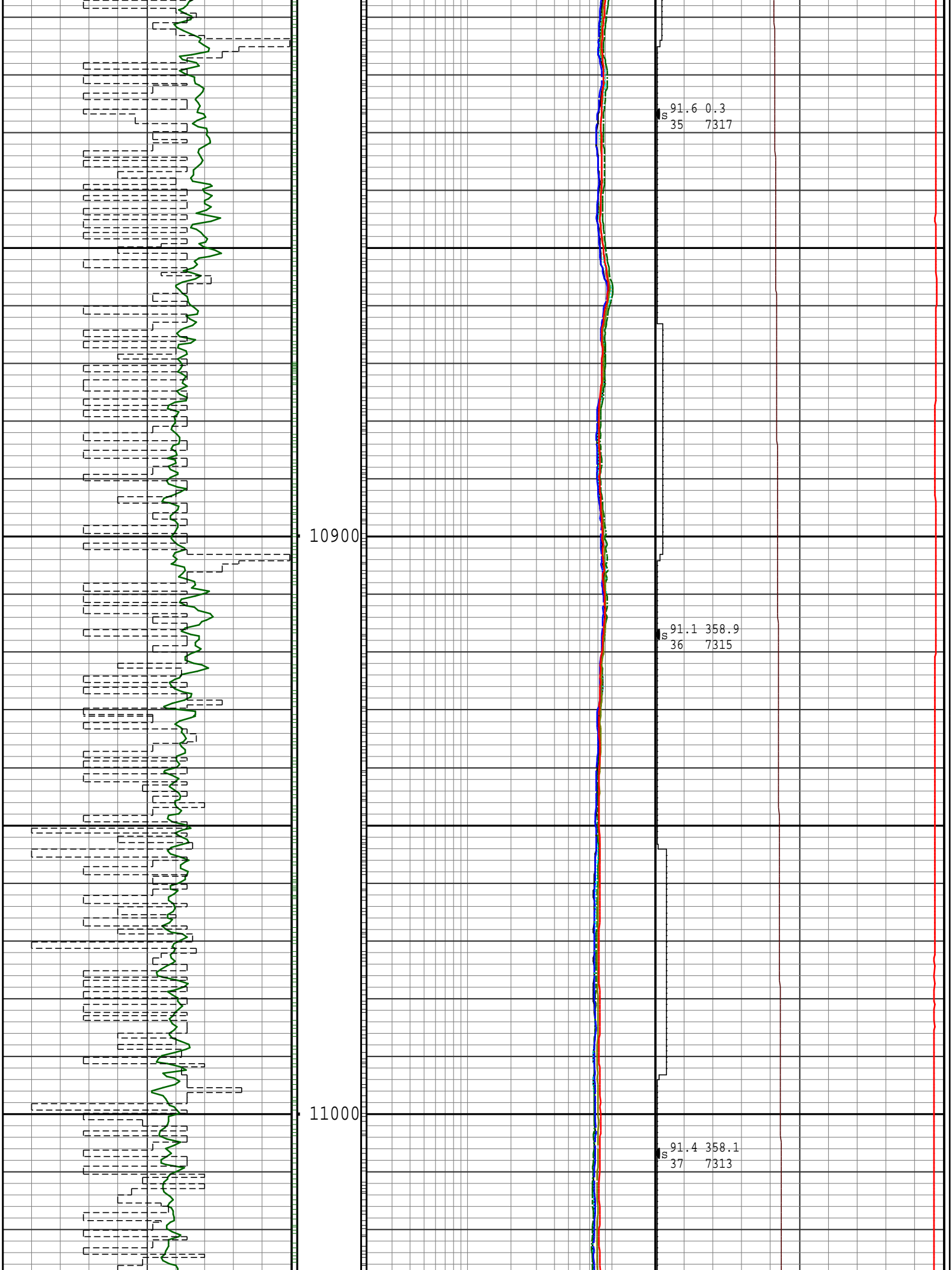
S 90.1 0.8
30 7329

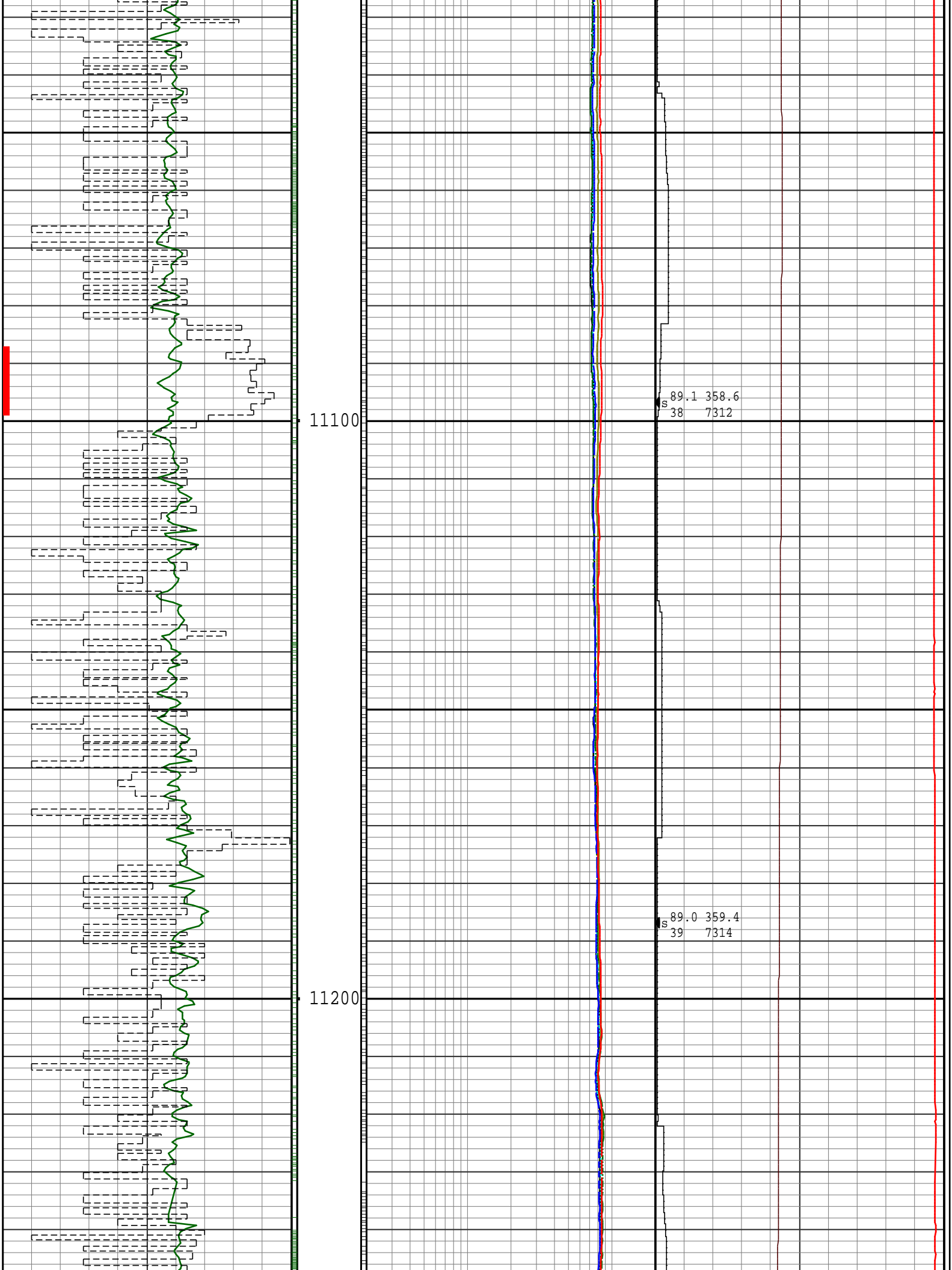
S 91.5 359.9
31 7328

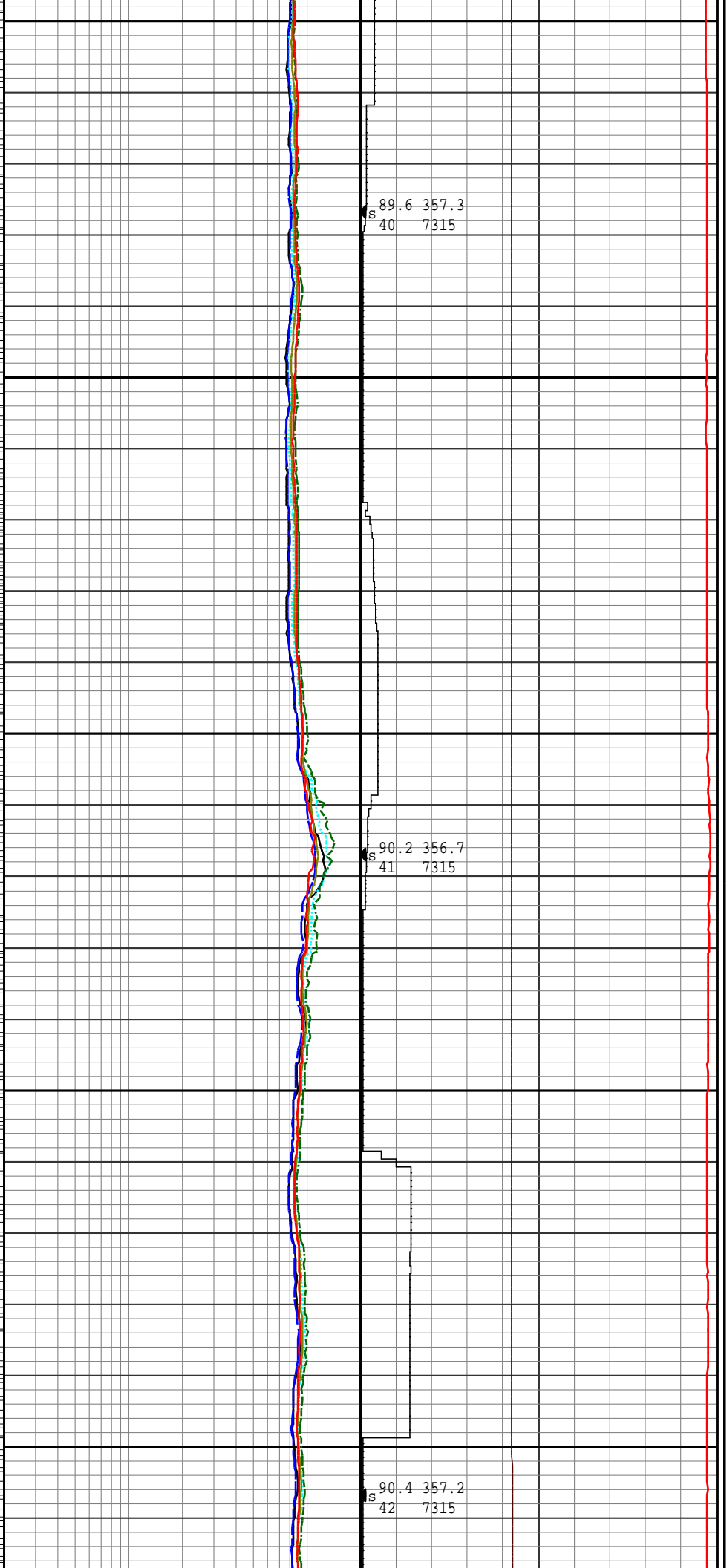
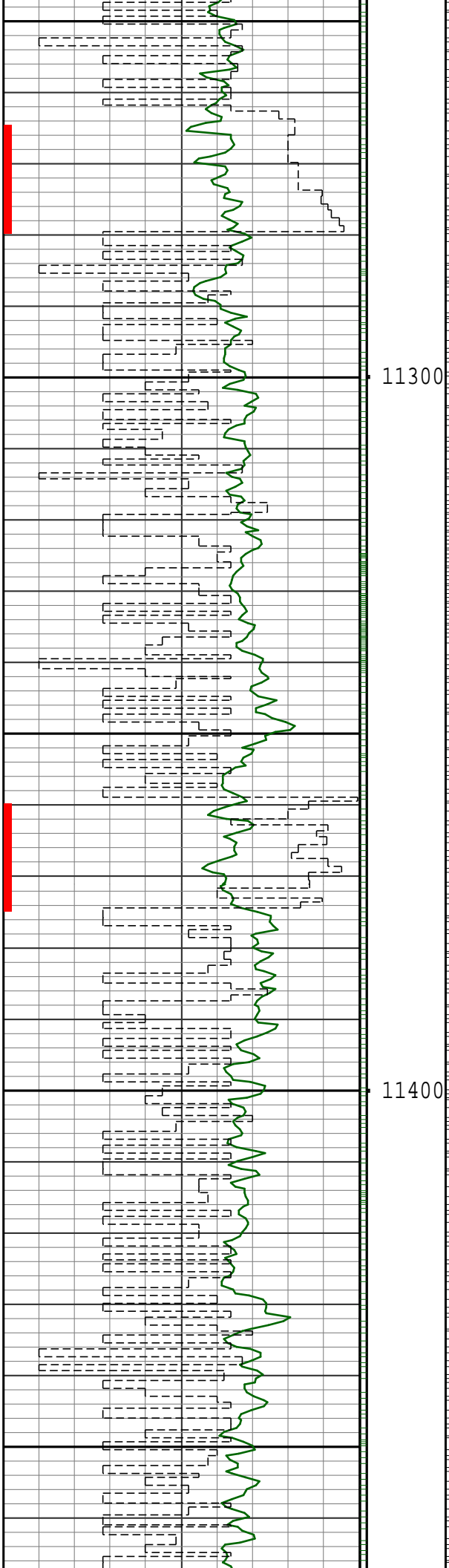
S 91.9 0.2
32 7325

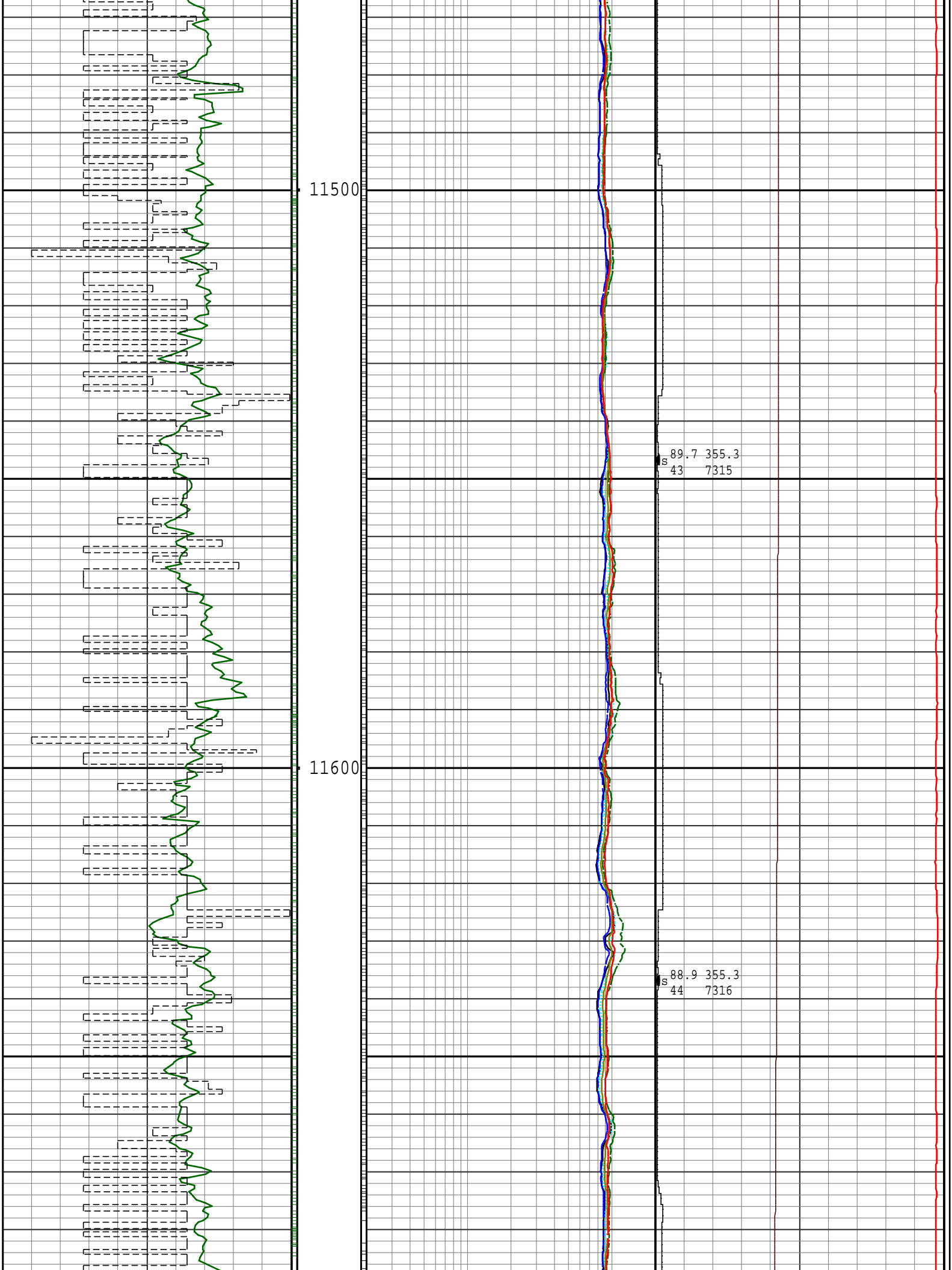


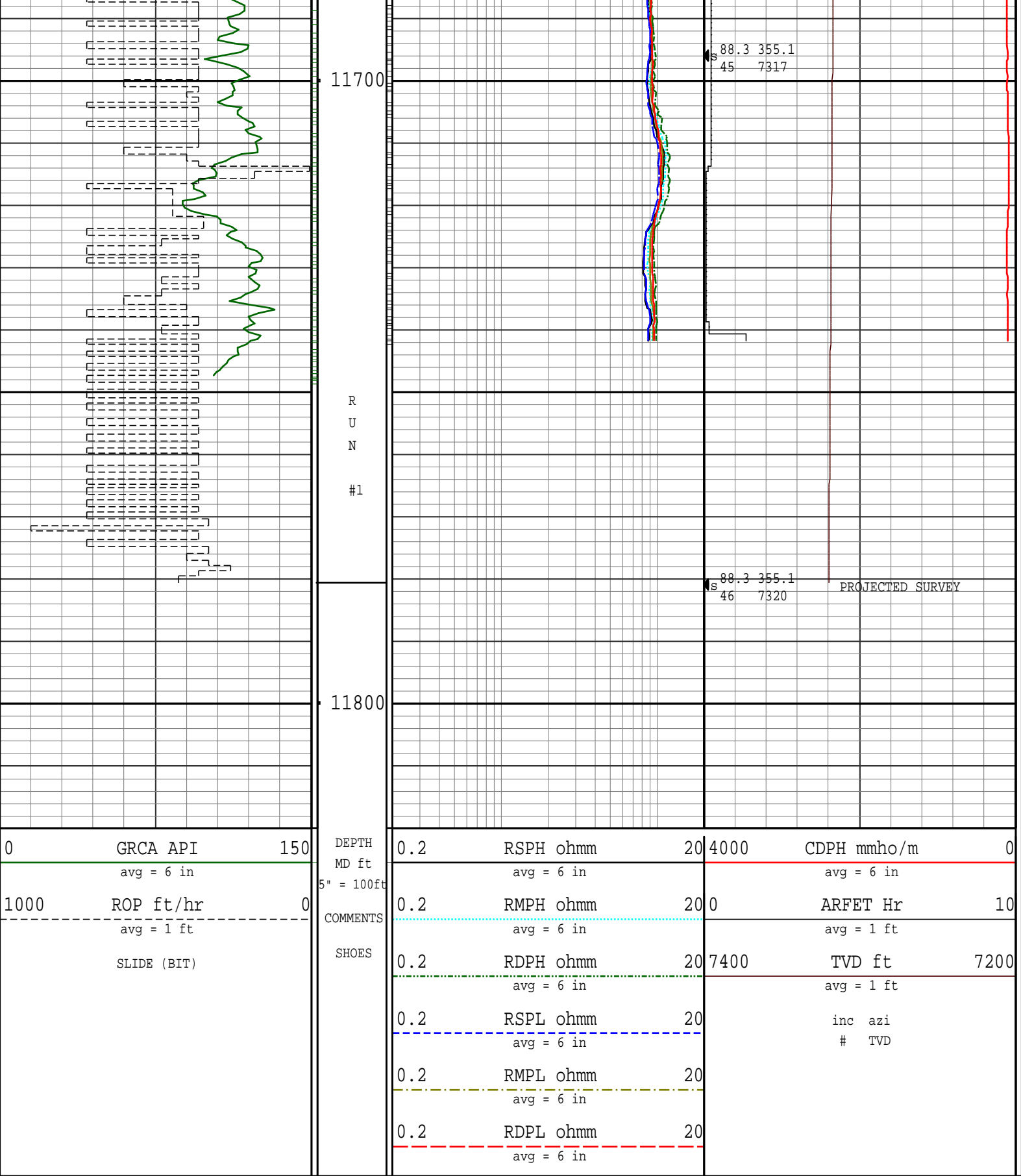












Survey Report											
Vertical Section Plane: 355.84°						Total Correction: 8.60° East to True					
Calculation Method: Minimum Curvature						Survey Reference: Rotary Table					
North Aligned to: True North						Well: VONDERLAGE 29C-31HZ					
RT: 13' ROTARY TABLE TO GROUND LEVEL						FIELD: DJ WATTENBERG					
Measured	Inclination	Azimuth	TVD	Course	Vertical	Rect Co-ord	Rect Co-ord	Closure	Closure	Dog-leg	Temp

Depth (ft)	(deg)	(deg)	(ft)	Length (ft)	Section (ft)	North (ft)	East (ft)	Distance (ft)	Direction (deg)	Severity (dg/hft)	(deg F)
THE FOLLOWING ARE CATHEDRAL EM SURVEYS.											
738.00	1.34	346.43	738.00	0.00	5.79	5.50 N	4.30 W	6.98	321.93	0.00	
940.00	1.40	327.00	939.94	202.00	10.29	9.86 N	6.20 W	11.65	327.83	0.23	
1033.00	1.20	248.90	1032.93	93.00	11.00	10.46 N	7.73 W	13.01	323.55	1.77	
1127.00	3.60	213.50	1126.84	94.00	8.37	7.65 N	10.28 W	12.81	306.66	2.89	
1220.00	5.20	201.90	1219.57	93.00	2.28	1.30 N	13.46 W	13.52	275.53	1.96	
1314.00	6.30	203.00	1313.09	94.00	-6.14	7.40 S	17.07 W	18.60	246.57	1.18	
1407.00	7.10	209.80	1405.46	93.00	-15.45	17.08 S	21.92 W	27.79	232.07	1.21	
1501.00	8.40	212.40	1498.60	94.00	-25.78	27.92 S	28.48 W	39.88	225.57	1.43	
1594.00	6.90	216.10	1590.77	93.00	-35.50	38.17 S	35.41 W	52.07	222.85	1.70	
1688.00	7.40	196.10	1684.05	94.00	-45.49	48.55 S	40.42 W	63.17	219.78	2.69	
1781.00	8.30	194.90	1776.18	93.00	-57.45	60.79 S	43.81 W	74.93	215.78	0.98	
1875.00	7.70	196.10	1869.26	94.00	-69.77	73.40 S	47.30 W	87.32	212.80	0.66	
1968.00	8.80	201.20	1961.30	93.00	-82.05	86.02 S	51.60 W	100.31	210.96	1.42	
2058.00	9.50	199.90	2050.15	90.00	-95.05	99.42 S	56.62 W	114.41	209.66	0.81	
2148.00	11.30	204.20	2138.67	90.00	-109.59	114.45 S	62.76 W	130.53	208.74	2.18	
2238.00	12.20	201.60	2226.79	90.00	-125.92	131.33 S	69.87 W	148.76	208.01	1.16	
2328.00	13.90	203.10	2314.46	90.00	-144.09	150.12 S	77.62 W	169.00	207.34	1.93	
2418.00	14.90	201.30	2401.63	90.00	-164.15	170.84 S	86.06 W	191.30	206.74	1.22	
2508.00	14.90	205.40	2488.61	90.00	-184.66	192.08 S	95.23 W	214.39	206.37	1.17	
2599.00	15.70	203.40	2576.38	91.00	-205.76	213.95 S	105.14 W	238.38	206.17	1.05	
2689.00	17.10	204.40	2662.72	90.00	-228.17	237.17 S	115.44 W	263.78	205.95	1.59	
2779.00	16.90	202.20	2748.79	90.00	-251.52	261.34 S	125.85 W	290.06	205.71	0.75	
2869.00	16.70	197.70	2834.95	90.00	-275.24	285.77 S	134.72 W	315.93	205.24	1.46	
2959.00	16.20	195.40	2921.27	90.00	-299.07	310.19 S	141.99 W	341.14	204.60	0.91	
3049.00	14.20	194.80	3008.11	90.00	-321.35	332.97 S	148.14 W	364.44	203.99	2.23	
3139.00	12.90	188.10	3095.61	90.00	-341.60	353.59 S	152.38 W	385.03	203.31	2.26	
3229.00	12.20	180.60	3183.47	90.00	-360.90	373.05 S	153.89 W	403.54	202.42	1.97	
3319.00	11.90	182.80	3271.48	90.00	-379.59	391.82 S	154.45 W	421.17	201.51	0.61	
3409.00	11.40	190.60	3359.64	90.00	-397.40	409.84 S	156.54 W	438.71	200.90	1.83	
3499.00	8.50	195.10	3448.27	90.00	-412.28	425.00 S	159.91 W	454.09	200.62	3.33	
3589.00	7.60	208.80	3537.39	90.00	-423.56	436.64 S	164.51 W	466.60	200.64	2.35	
3679.00	7.40	222.00	3626.63	90.00	-432.57	446.17 S	171.25 W	477.90	201.00	1.92	
3769.00	6.00	232.00	3716.02	90.00	-439.20	453.37 S	178.84 W	487.37	201.53	2.02	
3859.00	4.80	240.10	3805.62	90.00	-443.46	458.14 S	185.81 W	494.39	202.08	1.58	
3950.00	4.20	267.50	3896.35	91.00	-445.01	460.19 S	192.44 W	498.80	202.69	2.43	
4040.00	3.40	278.40	3986.15	90.00	-444.34	459.94 S	198.37 W	500.90	203.33	1.19	
4130.00	2.40	309.10	4076.04	90.00	-442.47	458.36 S	202.48 W	501.09	203.83	2.01	
4220.00	4.20	312.00	4165.88	90.00	-438.80	454.97 S	206.39 W	499.59	204.40	2.01	
4310.00	2.90	332.20	4255.71	90.00	-434.33	450.75 S	209.90 W	497.22	204.97	1.98	
4400.00	2.10	24.30	4345.64	90.00	-430.80	447.23 S	210.28 W	494.20	205.18	2.57	
4490.00	1.80	35.00	4435.59	90.00	-428.25	444.57 S	208.79 W	491.16	205.16	0.52	
4760.00	1.00	324.60	4705.52	270.00	-422.95	439.18 S	207.73 W	485.82	205.31	0.64	
4850.00	0.90	321.30	4795.51	90.00	-421.70	437.98 S	208.62 W	485.13	205.47	0.13	
4940.00	1.10	301.40	4885.49	90.00	-420.61	436.98 S	209.80 W	484.74	205.65	0.44	
5030.00	0.80	300.00	4975.48	90.00	-419.76	436.22 S	211.08 W	484.61	205.82	0.33	
5120.00	0.90	306.70	5065.47	90.00	-418.94	435.48 S	212.19 W	484.43	205.98	0.16	
5210.00	1.00	285.30	5155.46	90.00	-418.22	434.85 S	213.52 W	484.44	206.15	0.41	
5300.00	1.10	268.40	5245.44	90.00	-417.92	434.67 S	215.14 W	485.00	206.33	0.36	
5390.00	1.40	259.30	5335.42	90.00	-418.00	434.90 S	217.08 W	486.07	206.53	0.40	
5480.00	1.60	220.80	5425.39	90.00	-419.02	436.05 S	218.98 W	487.95	206.67	1.12	
5570.00	1.70	157.40	5515.36	90.00	-421.17	438.24 S	219.29 W	490.04	206.58	1.93	
5660.00	1.10	147.80	5605.34	90.00	-423.20	440.20 S	218.32 W	491.36	206.38	0.71	
5750.00	1.00	121.10	5695.32	90.00	-424.42	441.34 S	217.19 W	491.88	206.20	0.55	
5840.00	0.80	125.40	5785.31	90.00	-425.27	442.11 S	216.00 W	492.05	206.04	0.23	
5930.00	0.50	63.80	5875.31	90.00	-425.52	442.30 S	215.14 W	491.84	205.94	0.79	
6021.00	0.80	78.20	5966.30	91.00	-425.29	441.99 S	214.16 W	491.14	205.85	0.37	
6111.00	0.90	75.20	6056.29	90.00	-425.08	441.68 S	212.86 W	490.30	205.73	0.12	
6201.00	0.80	68.10	6146.28	90.00	-424.76	441.27 S	211.59 W	489.38	205.62	0.16	
6291.00	0.90	59.90	6236.27	90.00	-424.25	440.68 S	210.40 W	488.33	205.52	0.17	
6381.00	0.40	55.70	6326.26	90.00	-423.79	440.15 S	209.53 W	487.47	205.46	0.56	
6471.00	0.20	11.50	6416.26	90.00	-423.48	439.82 S	209.24 W	487.05	205.44	0.32	
6561.00	0.80	7.60	6506.26	90.00	-422.71	439.04 S	209.12 W	486.30	205.47	0.67	
6651.00	0.70	11.60	6596.25	90.00	-421.57	437.88 S	208.93 W	485.17	205.51	0.13	
6741.00	0.70	11.10	6686.24	90.00	-420.51	436.80 S	208.71 W	484.10	205.54	0.01	
6801.00	0.90	12.70	6746.24	60.00	-419.70	435.98 S	208.54 W	483.29	205.56	0.34	
6831.00	2.20	7.10	6776.23	30.00	-418.91	435.18 S	208.42 W	482.51	205.59	4.36	
6861.00	5.70	1.40	6806.15	30.00	-416.87	433.12 S	208.31 W	480.61	205.69	11.73	
6891.00	9.70	358.50	6835.88	30.00	-412.86	429.10 S	208.34 W	477.00	205.90	13.39	
6921.00	13.10	358.70	6865.28	30.00	-406.93	423.17 S	208.48 W	471.74	206.23	11.33	
6951.00	16.90	357.30	6894.25	30.00	-399.18	415.42 S	208.76 W	464.92	206.68	12.72	

Survey Report											
Vertical Section Plane: 355.84°						Total Correction: 8.60° East to True					
Calculation Method: Minimum Curvature						Survey Reference: Rotary Table					
North Aligned to: True North						Well: VONDERLAGE 29C-31HZ					
RT: 13' ROTARY TABLE TO GROUND LEVEL						FIELD: DJ WATTENBERG					
Measured Depth (ft)	Inclination (deg)	Azimuth (deg)	TVD (ft)	Course Length (ft)	Vertical Section (ft)	Rect Co-ord North (ft)	Rect Co-ord East (ft)	Closure Distance (ft)	Closure Direction (deg)	Dog-leg Severity (dg/hft)	Temp (deg F)

6981.00	18.20	356.50	6922.85	30.00	-390.13	406.38 S	209.26 W	457.09	207.24	4.41	
7011.00	19.60	357.80	6951.24	30.00	-380.42	396.68 S	209.74 W	448.71	207.87	4.87	
7041.00	23.10	359.30	6979.17	30.00	-369.51	385.76 S	210.00 W	439.22	208.56	11.81	
7071.00	26.70	359.40	7006.38	30.00	-356.91	373.13 S	210.14 W	428.24	209.39	12.00	
7101.00	30.10	0.00	7032.77	30.00	-342.67	358.87 S	210.21 W	415.90	210.36	11.37	
7131.00	34.30	0.30	7058.15	30.00	-326.74	342.89 S	210.17 W	402.17	211.51	14.01	
7161.00	38.40	358.70	7082.30	30.00	-308.99	325.11 S	210.34 W	387.22	212.90	14.03	
7191.00	41.90	358.40	7105.23	30.00	-289.68	305.78 S	210.83 W	371.41	214.59	11.68	
7221.00	45.50	358.50	7126.92	30.00	-268.97	285.06 S	211.39 W	354.89	216.56	12.00	
7251.00	46.70	357.50	7147.72	30.00	-247.37	263.46 S	212.14 W	338.25	218.84	4.67	
7281.00	47.90	356.80	7168.06	30.00	-225.33	241.44 S	213.24 W	322.12	221.45	4.35	
7311.00	50.30	356.70	7187.70	30.00	-202.66	218.80 S	214.53 W	306.42	224.44	8.00	
7341.00	53.70	358.00	7206.17	30.00	-179.03	195.19 S	215.61 W	290.84	227.85	11.84	
7371.00	56.30	0.00	7223.38	30.00	-154.50	170.62 S	216.04 W	275.29	231.70	10.24	
7401.00	59.10	1.50	7239.41	30.00	-129.24	145.27 S	215.70 W	260.06	236.04	10.25	
7431.00	61.40	1.40	7254.29	30.00	-103.32	119.24 S	215.04 W	245.88	240.99	7.67	
7461.00	63.90	1.50	7268.08	30.00	-76.80	92.60 S	214.37 W	233.51	246.64	8.34	
7491.00	66.80	0.90	7280.59	30.00	-49.66	65.34 S	213.80 W	223.56	253.01	9.84	
7521.00	69.20	0.20	7291.82	30.00	-21.94	37.53 S	213.53 W	216.80	260.03	8.29	
7551.00	71.00	0.20	7302.03	30.00	6.18	9.32 S	213.43 W	213.64	267.50	6.00	
7581.00	72.30	359.70	7311.48	30.00	34.59	19.15 N	213.46 W	214.32	275.13	4.61	
7611.00	75.00	358.90	7319.92	30.00	63.32	47.93 N	213.81 W	219.12	282.64	9.36	
7641.00	78.10	358.60	7326.90	30.00	92.45	77.10 N	214.45 W	227.89	289.77	10.38	
TIED INTO CATHEDRAL EM SURVEY AT 7692'MD.											
7692.00	86.70	357.30	7333.64		142.92	127.57 N	216.26 W	251.08	300.54		
THE FOLLOWING ARE PATHFINDER MWD SURVEYS.											
7766.00	92.68	356.12	7334.04	74.00	216.88	201.41 N	220.51 W	298.65	312.41	8.24	194.99
7856.00	89.87	355.07	7332.04	90.00	306.84	291.11 N	227.42 W	369.41	322.00	3.33	191.38
7946.00	87.67	353.39	7333.97	90.00	396.78	380.63 N	236.46 W	448.10	328.15	3.08	191.38
8036.00	88.20	354.14	7337.21	90.00	486.66	470.04 N	246.23 W	530.63	332.35	1.02	191.38
8126.00	88.55	353.66	7339.77	90.00	576.57	559.49 N	255.79 W	615.19	335.43	0.66	191.38
8216.00	88.55	355.46	7342.04	90.00	666.52	649.05 N	264.32 W	700.81	337.84	2.00	191.38
8303.00	89.69	356.95	7343.38	87.00	753.50	735.85 N	270.07 W	783.85	339.85	2.16	194.99
8396.00	90.57	356.52	7343.17	93.00	846.49	828.70 N	275.37 W	873.25	341.62	1.05	198.61
8486.00	91.19	358.70	7341.79	90.00	936.43	918.60 N	279.12 W	960.07	343.10	2.52	198.61
8576.00	91.80	0.17	7339.44	90.00	1026.22	1008.56 N	280.01 W	1046.71	344.48	1.77	202.22
8666.00	91.19	359.33	7337.09	90.00	1115.98	1098.53 N	280.40 W	1133.75	345.68	1.15	205.83
8756.00	90.22	357.07	7335.98	90.00	1205.89	1188.47 N	283.23 W	1221.76	346.60	2.73	205.83
8847.00	90.84	359.03	7335.14	91.00	1296.81	1279.41 N	286.33 W	1311.06	347.39	2.26	209.45
8937.00	90.48	358.08	7334.10	90.00	1386.70	1369.38 N	288.60 W	1399.46	348.10	1.13	209.45
9027.00	90.22	358.18	7333.55	90.00	1476.63	1459.33 N	291.53 W	1488.16	348.70	0.31	213.06
9117.00	90.04	358.69	7333.35	90.00	1566.54	1549.29 N	293.99 W	1576.94	349.26	0.60	213.06
9207.00	90.66	0.72	7332.80	90.00	1656.32	1639.28 N	294.45 W	1665.52	349.82	2.36	213.06
9297.00	90.57	359.16	7331.83	90.00	1746.09	1729.28 N	294.55 W	1754.18	350.33	1.74	216.68
9387.00	90.04	359.46	7331.35	90.00	1835.92	1819.27 N	295.63 W	1843.13	350.77	0.68	216.68
9477.00	89.96	359.60	7331.35	90.00	1925.73	1909.26 N	296.37 W	1932.13	351.18	0.18	216.68
9567.00	89.43	0.85	7331.83	90.00	2015.47	1999.26 N	296.02 W	2021.06	351.58	1.51	216.68
9657.00	89.69	0.97	7332.52	90.00	2105.11	2089.25 N	294.59 W	2109.91	351.97	0.32	220.29
9747.00	89.69	359.67	7333.01	90.00	2194.83	2179.24 N	294.09 W	2199.00	352.31	1.44	220.29
9837.00	90.48	1.88	7332.88	90.00	2284.49	2269.23 N	292.87 W	2288.05	352.65	2.61	220.29
9927.00	90.13	2.34	7332.40	90.00	2373.95	2359.16 N	289.55 W	2376.87	353.00	0.64	223.91
10017.00	91.28	2.87	7331.29	90.00	2463.32	2449.06 N	285.46 W	2465.64	353.35	1.41	223.91
10107.00	91.01	1.26	7329.49	90.00	2552.77	2538.98 N	282.22 W	2554.62	353.66	1.81	223.91
10197.00	90.31	1.18	7328.46	90.00	2642.36	2628.96 N	280.31 W	2643.86	353.91	0.78	227.52
10287.00	89.16	0.89	7328.87	90.00	2731.99	2718.94 N	278.68 W	2733.18	354.15	1.32	227.52
10377.00	90.13	0.82	7329.43	90.00	2821.64	2808.93 N	277.34 W	2822.58	354.36	1.08	227.52
10467.00	91.54	359.91	7328.12	90.00	2911.35	2898.91 N	276.76 W	2912.09	354.55	1.87	227.52
10557.00	91.89	0.16	7325.43	90.00	3001.07	2988.87 N	276.71 W	3001.65	354.71	0.48	227.52
10647.00	91.63	359.39	7322.66	90.00	3090.81	3078.83 N	277.06 W	3091.27	354.86	0.90	231.13
10737.00	92.07	0.10	7319.75	90.00	3180.56	3168.78 N	277.46 W	3180.90	355.00	0.93	231.13
10827.00	91.63	0.35	7316.85	90.00	3270.25	3258.73 N	277.11 W	3270.49	355.14	0.56	231.13
10917.00	91.10	358.94	7314.71	90.00	3360.02	3348.70 N	277.67 W	3360.19	355.26	1.67	231.13
11007.00	91.36	358.15	7312.77	90.00	3449.90	3438.65 N	279.95 W	3450.03	355.35	0.92	234.75
11097.00	89.08	358.64	7312.43	90.00	3539.80	3528.61 N	282.47 W	3539.90	355.42	2.59	234.75
11187.00	88.99	359.39	7313.94	90.00	3629.65	3618.58 N	284.02 W	3629.71	355.51	0.84	234.75
11277.00	89.60	357.28	7315.05	90.00	3719.55	3708.53 N	286.63 W	3719.59	355.58	2.44	234.75
11367.00	90.22	356.72	7315.19	90.00	3809.53	3798.41 N	291.34 W	3809.56	355.61	0.93	234.75
11457.00	90.40	357.23	7314.71	90.00	3899.51	3888.28 N	296.09 W	3899.54	355.65	0.60	238.36
11547.00	89.69	355.27	7314.63	90.00	3989.51	3978.08 N	301.98 W	3989.53	355.66	2.32	238.36
11637.00	88.90	355.26	7315.74	90.00	4079.50	4067.77 N	309.41 W	4079.52	355.65	0.88	238.36
11696.00	88.29	355.10	7317.19	59.00	4138.47	4126.54 N	314.36 W	4138.50	355.64	1.07	238.36

Survey Report											
Vertical Section Plane: 355.84°						Total Correction: 8.60° East to True					
Calculation Method: Minimum Curvature						Survey Reference: Rotary Table					
North Aligned to: True North						Well: VONDERLAGE 29C-31HZ					
RT: 13' ROTARY TABLE TO GROUND LEVEL						FIELD: DJ WATTENBERG					
Measured Depth (ft)	Inclination (deg)	Azimuth (deg)	TVD (ft)	Course Length (ft)	Vertical Section (ft)	Rect Co-ord North (ft)	Rect Co-ord East (ft)	Closure Distance (ft)	Closure Direction (deg)	Dog-leg Severity (dg/hft)	Temp (deg F)
STRAIGHT LINE PROJECTION TO BIT DEPTH AT 11781'MD.											
11781.00	88.29	355.10	7319.73	85.00	4223.43	4211.19 N	321.62 W	4223.46	355.63	0.00	

EQUIPMENT DATA						
RUN NUMBER	1					
RES DTA	4573					
RES MANDREL	4573					
RES SIZE in	4 3/4					
RES VERIFIER						
API BLANKET	.0013					
HDS-1M DTA						
HDS-1M MANDREL						
HDS-1M SIZE in						
DNSC DTA						
DNSC MANDREL						
DNSC SIZE in						
DENSITY SOURCE NO.						
NEUTRON SOURCE NO.						
CLSS DTA						
CLSS MANDREL						
CLSS SIZE in						
DPM DTA						
DPM SIZE in						
DFT DTA						
DFT MANDREL						
DFT SIZE in						
PZIG UXM DTA						
PZIG LXM DTA						
PZIG SIZE in						

BOTTOM HOLE ASSEMBLY RECORD							
RUN #1 ft							
6 1/8" PDC BIT	0.90						
1.5° MUD MOTOR	28.54						
AWR (RES/GR)	20.33						
ABS (BATTERY)	19.56						
SUB	1.13						
HDS-1L (DIR/GR)	28.75						
X/O	1.90						
REAMER	7.35						
DP X 60	1799.99						
AGITATOR	21.49						
DP X 75	2250.20						
HWDP X 60	1870.03						
TOTAL BHA:	6050.17						
SENSOR OFFSETS:							

AWR INCLINATION	32.71						
AWR GAMMA-RAY	33.11						
AWR RESISTIVITY	39.44						
GAMMA-RAY	74.33						
DIRECTIONAL	82.41						



A Schlumberger Company

RESISTIVITY
GAMMA-RAY
CONDUCTIVITY

5" = 100'
FEET MD