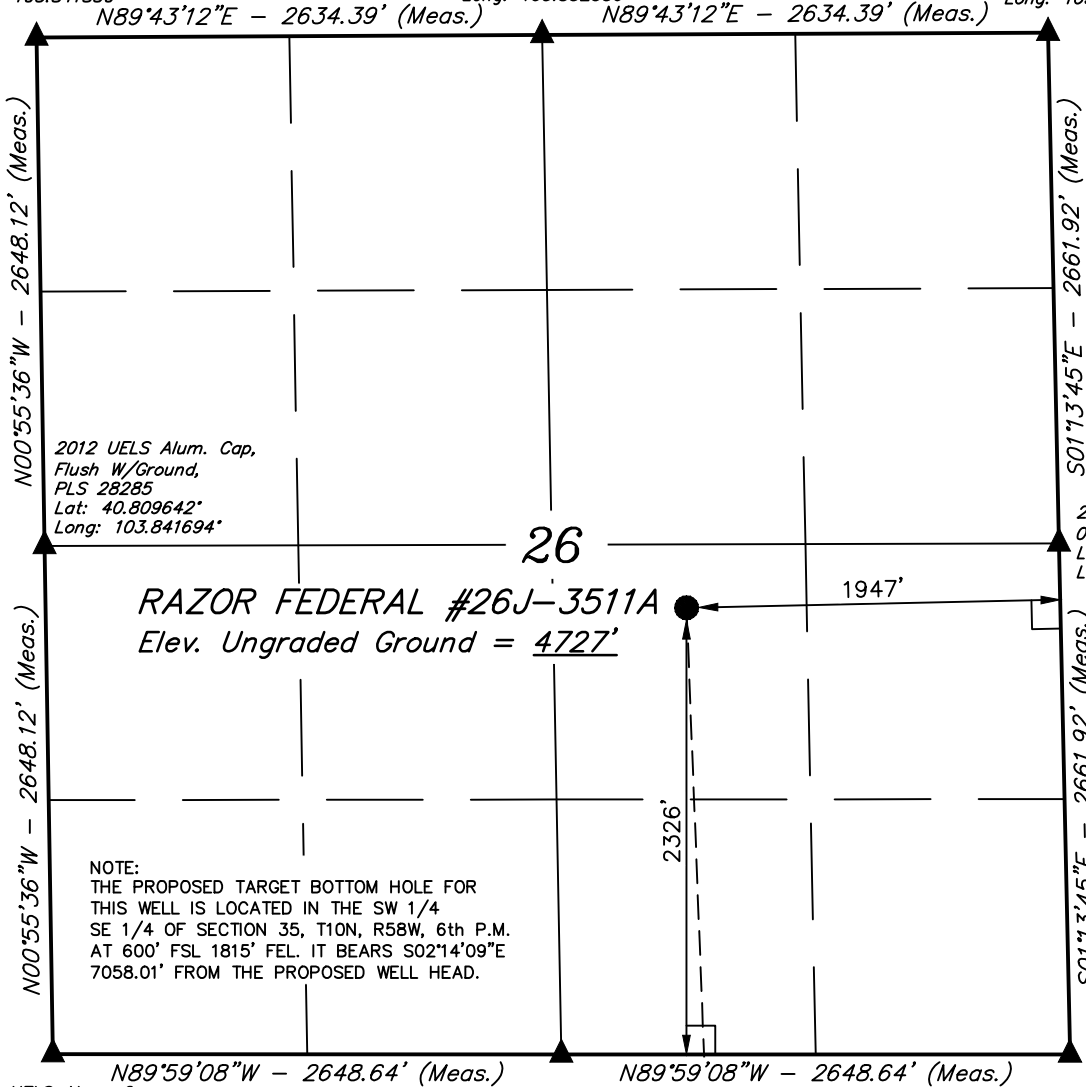


T10N, R58W, 6th P.M.

2010 UELS Alum. Cap,
Flush W/Ground
Lat: 40.816906°
Long: 103.841850°

2012 UELS Alum. Cap,
0.1' High, PLS 28285
Lat: 40.816942°
Long: 103.832336°

2010 UELS Alum. Cap,
0.3' High
Lat: 40.816975°
Long: 103.822819°



2010 UELS Alum. Cap,
Flush W/Ground
E/W Fence
Lat: 40.802375°
Long: 103.841542°

2012 Alum. Cap,
Flush W/Ground
PLS 28285
Lat: 40.802372°
Long: 103.831975°

2010 UELS Alum. Cap,
Flush W/Ground
Fence Corner
Lat: 40.802369°
Long: 103.822411°

LEGEND:

- └─┘ = 90° SYMBOL
- = PROPOSED WELL HEAD.
- ▲ = SECTION CORNERS LOCATED.

Target Bottom Hole

PDOP = 1.6	
NAD 83 (SURFACE LOCATION)	
LATITUDE =	40°48'31.52" (40.808756)
LONGITUDE =	103°49'46.64" (103.829622)
NAD 27 (SURFACE LOCATION)	
LATITUDE =	40°48'31.57" (40.808769)
LONGITUDE =	103°49'44.83" (103.829119)

WHITING OIL & GAS CORP.

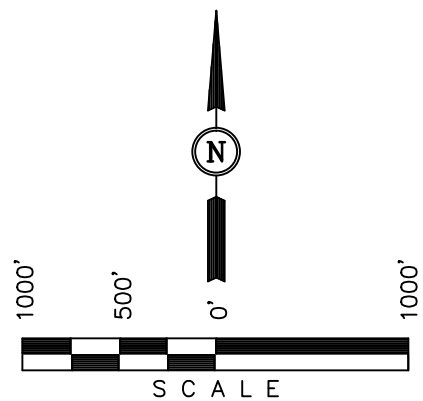
Well location, RAZOR FEDERAL #26J-3511A (SURFACE LOCATION), located as shown in the NW 1/4 SE 1/4 of Section 26, T10N, R58W, 6th P.M., Weld County, Colorado.

BASIS OF ELEVATION

SPOT ELEVATION LOCATED AT THE NORTHEAST CORNER OF SECTION 15, T9N, R58W, 6th P.M. TAKEN FROM THE GATEHOOK SPRING, QUADRANGLE, COLORADO, WELD COUNTY, 7.5 MINUTE QUAD (TOPOGRAPHIC MAP) PUBLISHED BY THE UNITED STATES DEPARTMENT OF THE INTERIOR, GEOLOGICAL SURVEY. SAID ELEVATION IS MARKED AS BEING 4679 FEET.

BASIS OF BEARINGS

BASIS OF BEARINGS IS A G.P.S. OBSERVATION.



CERTIFICATE

THIS IS TO CERTIFY THAT THE ABOVE MAP WAS PREPARED FROM FIELD NOTES OF ACTUAL SURVEYS MADE BY ME OR UNDER MY SUPERVISION AND THAT THE SAME ARE TRUE AND CORRECT TO THE BEST OF MY KNOWLEDGE AND BELIEF.

[Signature]
REGISTERED LAND SURVEYOR
REGISTRATION NO. 17492
STATE OF COLORADO
09-01-13

REVISED: 06-29-13
REVISED: 04-15-13

UINTAH ENGINEERING & LAND SURVEYING
85 SOUTH 200 EAST - VERNAL, UTAH 84078
(435) 789-1017

SCALE 1" = 1000'	DATE SURVEYED: 03-18-13	DATE DRAWN: 03-21-13
PARTY C.B. C.M. J.S.	REFERENCES G.L.O. PLAT	
WEATHER COOL	FILE WHITING OIL & GAS CORP.	

T10N, R58W, 6th P.M.

WHITING OIL & GAS CORP.

2010 UELS Alum. Cap,
Flush W/Ground
E/W Fence
Lat: 40.802375°
Long: 103.841542°

2010 UELS Alum.
Cap, Flush W/Ground
Fence Corner
Lat: 40.802369°
Long: 103.822411°

● Surface Location

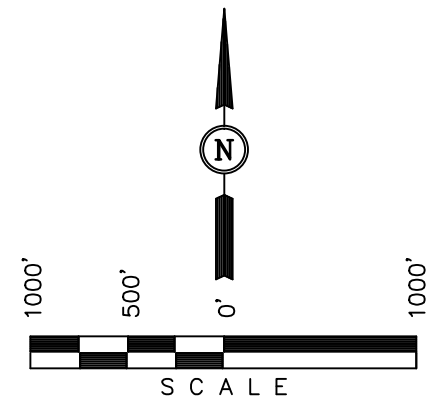
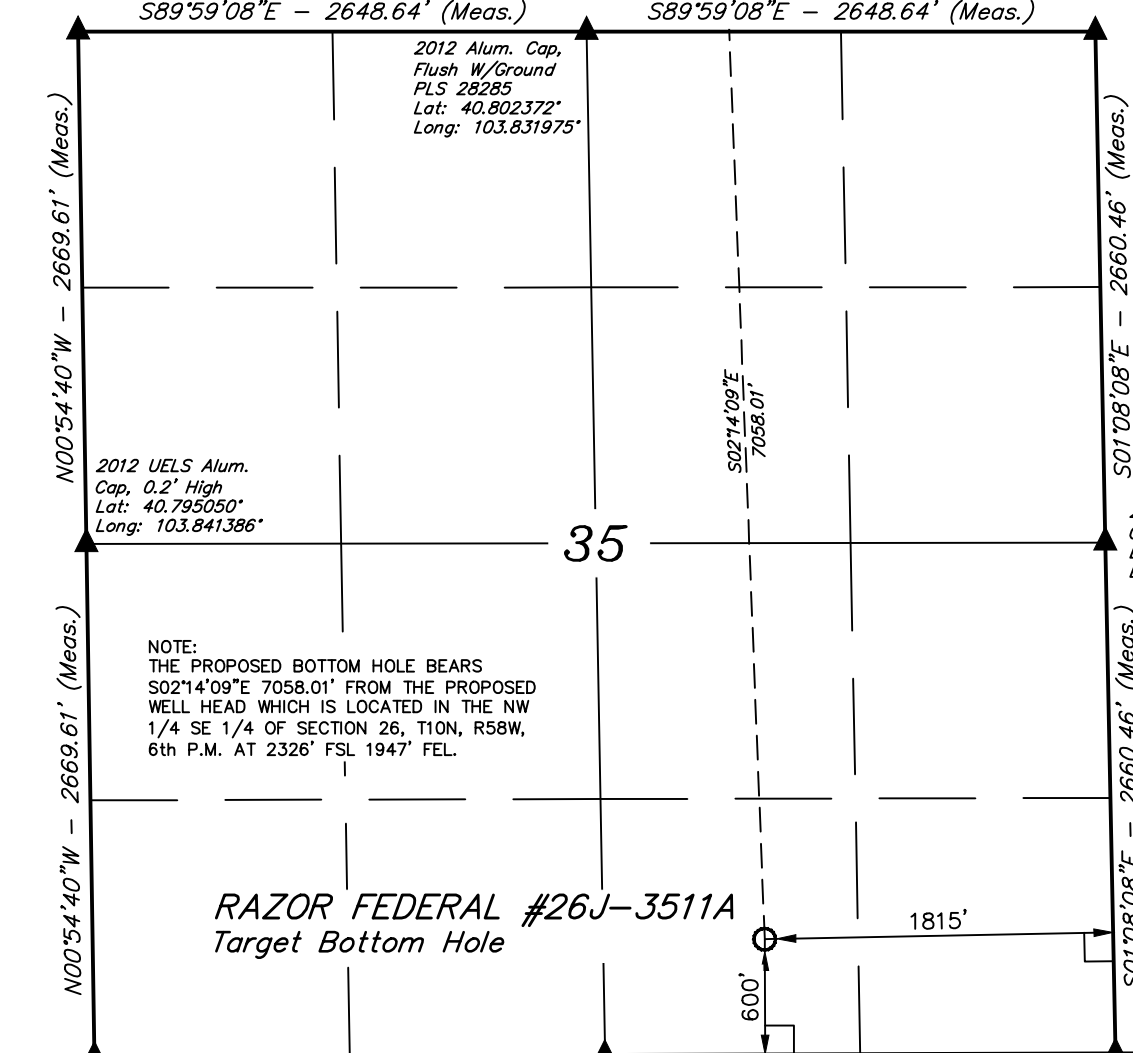
Well location, RAZOR FEDERAL #26J-3511A
(TARGET BOTTOM HOLE), located as shown in the
SW 1/4 SE 1/4 of Section 35, T10N, R58W, 6th
P.M., Weld County, Colorado.

BASIS OF ELEVATION

SPOT ELEVATION LOCATED AT THE NORTHEAST CORNER OF
SECTION 15, T9N, R58W, 6th P.M. TAKEN FROM THE
GATEHOOK SPRING, QUADRANGLE, COLORADO, WELD COUNTY,
7.5 MINUTE QUAD (TOPOGRAPHIC MAP) PUBLISHED BY THE
UNITED STATES DEPARTMENT OF THE INTERIOR, GEOLOGICAL
SURVEY. SAID ELEVATION IS MARKED AS BEING 4679 FEET.

BASIS OF BEARINGS

BASIS OF BEARINGS IS A G.P.S. OBSERVATION.



CERTIFICATE

THIS IS TO CERTIFY THAT THE ABOVE PLAT WAS PREPARED FROM
FIELD NOTES OF ACTUAL SURVEYS MADE BY ME OR UNDER MY
SUPERVISION AND THAT THE SAME ARE TRUE AND CORRECT TO THE
BEST OF MY KNOWLEDGE AND BELIEF.

REGISTERED LAND SURVEYOR
REGISTRATION NO. 17492
STATE OF COLORADO

REVISED: 04-15-13

2010 UELS Alum. Cap, 0.3' High, Steel Post
Lat: 40.787725°
Long: 103.841233°

2010 UELS Alum. Cap,
Flush W/Ground
Lat: 40.787747°
Long: 103.831633°

2010 Alum. Cap
0.1' High, Steel Post
Lat: 40.787772°
Long: 103.822033°

LEGEND:

- └─┘ = 90° SYMBOL
- = PROPOSED WELL HEAD.
- ▲ = SECTION CORNERS LOCATED.

NAD 83 (TARGET BOTTOM HOLE)	
LATITUDE	= 40°47'21.85" (40.789403)
LONGITUDE	= 103°49'43.07" (103.828631)
NAD 27 (TARGET BOTTOM HOLE)	
LATITUDE	= 40°47'21.90" (40.789417)
LONGITUDE	= 103°49'41.26" (103.828128)

UINTAH ENGINEERING & LAND SURVEYING		
85 SOUTH 200 EAST - VERNAL, UTAH 84078		
(435) 789-1017		
SCALE 1" = 1000'	DATE SURVEYED: 03-18-13	DATE DRAWN: 03-21-13
PARTY C.B. C.M. J.S.	REFERENCES G.L.O. PLAT	
WEATHER COOL	FILE WHITING OIL & GAS CORP.	