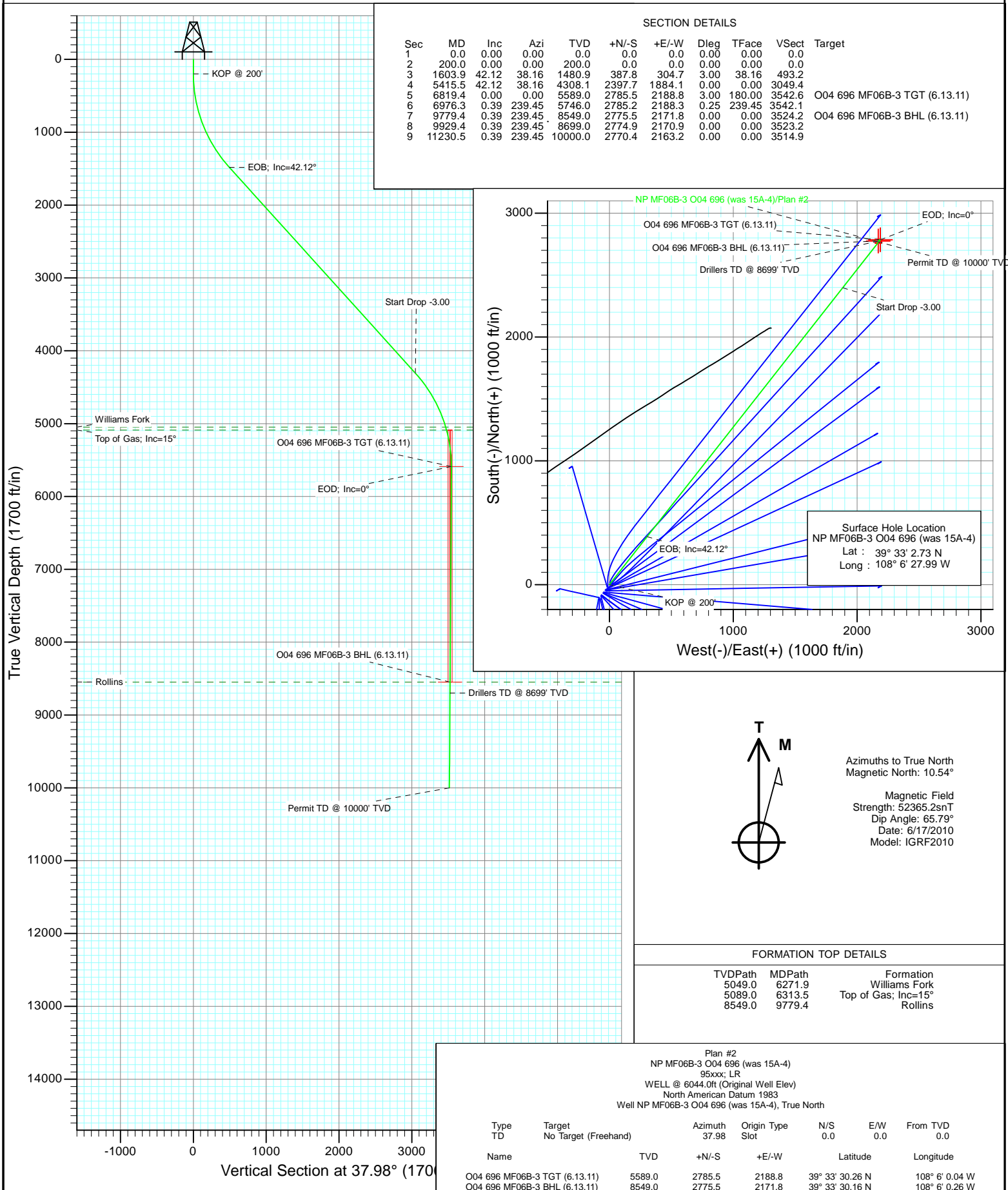




Project: North Piceance  
Site: O04 696 (3rd)  
Well: NP MF06B-3 O04 696 (was 15A-4)  
Wellbore: DD  
Design: Plan #2



## Planning Report

<b>Database:</b>	USA EDM 5000 US Multi Users DB	<b>Local Co-ordinate Reference:</b>	Well NP MF06B-3 O04 696 (was 15A-4)
<b>Company:</b>	EnCana Oil & Gas (USA) Inc	<b>TVD Reference:</b>	WELL @ 6044.0ft (Original Well Elev)
<b>Project:</b>	North Piceance	<b>MD Reference:</b>	WELL @ 6044.0ft (Original Well Elev)
<b>Site:</b>	O04 696 (3rd)	<b>North Reference:</b>	True
<b>Well:</b>	NP MF06B-3 O04 696 (was 15A-4)	<b>Survey Calculation Method:</b>	Minimum Curvature
<b>Wellbore:</b>	DD		
<b>Design:</b>	Plan #2		

<b>Project</b>	North Piceance		
<b>Map System:</b>	US State Plane 1983	<b>System Datum:</b>	Mean Sea Level
<b>Geo Datum:</b>	North American Datum 1983		
<b>Map Zone:</b>	Colorado Central Zone		

<b>Site</b>	O04 696 (3rd)			
<b>Site Position:</b>		<b>Northing:</b>	1,635,941.08 ft	<b>Latitude:</b> 39° 33' 1.64 N
<b>From:</b>	Lat/Long	<b>Easting:</b>	2,264,673.43 ft	<b>Longitude:</b> 108° 6' 29.09 W
<b>Position Uncertainty:</b>	0.0 ft	<b>Slot Radius:</b>	13.200 in	<b>Grid Convergence:</b> -1.64 °

<b>Well</b>	NP MF06B-3 O04 696 (was 15A-4)			
<b>Well Position</b>	<b>+N/-S</b>	0.0 ft	<b>Northing:</b>	1,636,048.83 ft
	<b>+E/-W</b>	0.0 ft	<b>Easting:</b>	2,264,762.72 ft
<b>Position Uncertainty</b>		0.0 ft	<b>Wellhead Elevation:</b>	ft
			<b>Ground Level:</b>	6,022.0 ft

<b>Wellbore</b>	DD				
<b>Magnetics</b>	<b>Model Name</b>	<b>Sample Date</b>	<b>Declination (°)</b>	<b>Dip Angle (°)</b>	<b>Field Strength (nT)</b>
	IGRF2010	6/17/2010	10.54	65.79	52,365

<b>Design</b>	Plan #2			
<b>Audit Notes:</b>				
<b>Version:</b>	<b>Phase:</b>	PLAN	<b>Tie On Depth:</b>	0.0
<b>Vertical Section:</b>	<b>Depth From (TVD) (ft)</b>	<b>+N/-S (ft)</b>	<b>+E/-W (ft)</b>	<b>Direction (°)</b>
	0.0	0.0	0.0	37.98

<b>Plan Sections</b>										
Measured Depth (ft)	Inclination (°)	Azimuth (°)	Vertical Depth (ft)	+N/-S (ft)	+E/-W (ft)	Dogleg Rate (°/100ft)	Build Rate (°/100ft)	Turn Rate (°/100ft)	TFO (°)	Target
0.0	0.00	0.00	0.0	0.0	0.0	0.00	0.00	0.00	0.00	
200.0	0.00	0.00	200.0	0.0	0.0	0.00	0.00	0.00	0.00	
1,603.9	42.12	38.16	1,480.9	387.8	304.7	3.00	3.00	0.00	38.16	
5,415.5	42.12	38.16	4,308.1	2,397.7	1,884.1	0.00	0.00	0.00	0.00	
6,819.4	0.00	0.00	5,589.0	2,785.5	2,188.8	3.00	-3.00	0.00	180.00	O04 696 MF06B-3 TC
6,976.3	0.39	239.45	5,746.0	2,785.2	2,188.3	0.25	0.25	-76.81	239.45	
9,779.4	0.39	239.45	8,549.0	2,775.5	2,171.8	0.00	0.00	0.00	0.00	O04 696 MF06B-3 B+
9,929.4	0.39	239.45	8,699.0	2,774.9	2,170.9	0.00	0.00	0.00	0.00	
11,230.5	0.39	239.45	10,000.0	2,770.4	2,163.2	0.00	0.00	0.00	0.00	

# Planning Report

**Database:** USA EDM 5000 US Multi Users DB  
**Company:** EnCana Oil & Gas (USA) Inc  
**Project:** North Piceance  
**Site:** O04 696 (3rd)  
**Well:** NP MF06B-3 O04 696 (was 15A-4)  
**Wellbore:** DD  
**Design:** Plan #2

**Local Co-ordinate Reference:** Well NP MF06B-3 O04 696 (was 15A-4)  
**TVD Reference:** WELL @ 6044.0ft (Original Well Elev)  
**MD Reference:** WELL @ 6044.0ft (Original Well Elev)  
**North Reference:** True  
**Survey Calculation Method:** Minimum Curvature

## Planned Survey

Measured Depth (ft)	Inclination (°)	Azimuth (°)	Vertical Depth (ft)	+N/-S (ft)	+E/-W (ft)	Vertical Section (ft)	Dogleg Rate (°/100ft)	Build Rate (°/100ft)	Comments / Formations
0.0	0.00	0.00	0.0	0.0	0.0	0.0	0.00	0.00	
30.0	0.00	0.00	30.0	0.0	0.0	0.0	0.00	0.00	
60.0	0.00	0.00	60.0	0.0	0.0	0.0	0.00	0.00	
90.0	0.00	0.00	90.0	0.0	0.0	0.0	0.00	0.00	
120.0	0.00	0.00	120.0	0.0	0.0	0.0	0.00	0.00	
150.0	0.00	0.00	150.0	0.0	0.0	0.0	0.00	0.00	
180.0	0.00	0.00	180.0	0.0	0.0	0.0	0.00	0.00	
200.0	0.00	0.00	200.0	0.0	0.0	0.0	0.00	0.00	KOP @ 200'
210.0	0.30	38.16	210.0	0.0	0.0	0.0	3.00	3.00	
240.0	1.20	38.16	240.0	0.3	0.3	0.4	3.00	3.00	
270.0	2.10	38.16	270.0	1.0	0.8	1.3	3.00	3.00	
300.0	3.00	38.16	300.0	2.1	1.6	2.6	3.00	3.00	
330.0	3.90	38.16	329.9	3.5	2.7	4.4	3.00	3.00	
360.0	4.80	38.16	359.8	5.3	4.1	6.7	3.00	3.00	
390.0	5.70	38.16	389.7	7.4	5.8	9.4	3.00	3.00	
420.0	6.60	38.16	419.5	10.0	7.8	12.7	3.00	3.00	
450.0	7.50	38.16	449.3	12.8	10.1	16.3	3.00	3.00	
480.0	8.40	38.16	479.0	16.1	12.7	20.5	3.00	3.00	
510.0	9.30	38.16	508.6	19.7	15.5	25.1	3.00	3.00	
540.0	10.20	38.16	538.2	23.7	18.6	30.2	3.00	3.00	
570.0	11.10	38.16	567.7	28.1	22.1	35.7	3.00	3.00	
600.0	12.00	38.16	597.1	32.8	25.8	41.7	3.00	3.00	
630.0	12.90	38.16	626.4	37.9	29.8	48.2	3.00	3.00	
660.0	13.80	38.16	655.6	43.3	34.1	55.1	3.00	3.00	
690.0	14.70	38.16	684.6	49.2	38.6	62.5	3.00	3.00	
720.0	15.60	38.16	713.6	55.3	43.5	70.4	3.00	3.00	
750.0	16.50	38.16	742.4	61.8	48.6	78.6	3.00	3.00	
780.0	17.40	38.16	771.1	68.7	54.0	87.4	3.00	3.00	
810.0	18.30	38.16	799.7	75.9	59.7	96.6	3.00	3.00	
840.0	19.20	38.16	828.1	83.5	65.6	106.2	3.00	3.00	
870.0	20.10	38.16	856.3	91.5	71.9	116.3	3.00	3.00	
900.0	21.00	38.16	884.4	99.7	78.4	126.9	3.00	3.00	
930.0	21.90	38.16	912.4	108.4	85.2	137.8	3.00	3.00	
960.0	22.80	38.16	940.1	117.3	92.2	149.2	3.00	3.00	
990.0	23.70	38.16	967.7	126.7	99.5	161.1	3.00	3.00	
1,020.0	24.60	38.16	995.0	136.3	107.1	173.3	3.00	3.00	
1,050.0	25.50	38.16	1,022.2	146.3	115.0	186.0	3.00	3.00	
1,080.0	26.40	38.16	1,049.2	156.6	123.1	199.2	3.00	3.00	
1,110.0	27.30	38.16	1,076.0	167.3	131.4	212.7	3.00	3.00	
1,140.0	28.20	38.16	1,102.5	178.2	140.1	226.7	3.00	3.00	
1,170.0	29.10	38.16	1,128.8	189.6	149.0	241.1	3.00	3.00	
1,200.0	30.00	38.16	1,154.9	201.2	158.1	255.9	3.00	3.00	
1,230.0	30.90	38.16	1,180.8	213.1	167.5	271.1	3.00	3.00	
1,260.0	31.80	38.16	1,206.4	225.4	177.1	286.7	3.00	3.00	
1,290.0	32.70	38.16	1,231.8	238.0	187.0	302.7	3.00	3.00	
1,320.0	33.60	38.16	1,256.9	250.9	197.2	319.1	3.00	3.00	
1,350.0	34.50	38.16	1,281.8	264.1	207.5	335.9	3.00	3.00	
1,380.0	35.40	38.16	1,306.3	277.6	218.2	353.1	3.00	3.00	
1,410.0	36.30	38.16	1,330.7	291.4	229.0	370.6	3.00	3.00	
1,440.0	37.20	38.16	1,354.7	305.6	240.1	388.6	3.00	3.00	
1,470.0	38.10	38.16	1,378.5	320.0	251.4	406.9	3.00	3.00	
1,500.0	39.00	38.16	1,401.9	334.7	263.0	425.6	3.00	3.00	

## Planning Report

<b>Database:</b>	USA EDM 5000 US Multi Users DB	<b>Local Co-ordinate Reference:</b>	Well NP MF06B-3 O04 696 (was 15A-4)
<b>Company:</b>	EnCana Oil & Gas (USA) Inc	<b>TVD Reference:</b>	WELL @ 6044.0ft (Original Well Elev)
<b>Project:</b>	North Piceance	<b>MD Reference:</b>	WELL @ 6044.0ft (Original Well Elev)
<b>Site:</b>	O04 696 (3rd)	<b>North Reference:</b>	True
<b>Well:</b>	NP MF06B-3 O04 696 (was 15A-4)	<b>Survey Calculation Method:</b>	Minimum Curvature
<b>Wellbore:</b>	DD		
<b>Design:</b>	Plan #2		

### Planned Survey

Measured Depth (ft)	Inclination (°)	Azimuth (°)	Vertical Depth (ft)	+N/-S (ft)	+E/-W (ft)	Vertical Section (ft)	Dogleg Rate (°/100ft)	Build Rate (°/100ft)	Comments / Formations
1,530.0	39.90	38.16	1,425.1	349.6	274.7	444.7	3.00	3.00	
1,560.0	40.80	38.16	1,447.9	364.9	286.7	464.1	3.00	3.00	
1,590.0	41.70	38.16	1,470.5	380.5	299.0	483.9	3.00	3.00	
1,603.9	42.12	38.16	1,480.9	387.8	304.7	493.2	3.00	3.00	EOB; Inc=42.12°
1,620.0	42.12	38.16	1,492.8	396.3	311.4	504.0	0.00	0.00	
1,650.0	42.12	38.16	1,515.0	412.1	323.8	524.1	0.00	0.00	
1,680.0	42.12	38.16	1,537.3	427.9	336.2	544.2	0.00	0.00	
1,710.0	42.12	38.16	1,559.5	443.7	348.7	564.3	0.00	0.00	
1,740.0	42.12	38.16	1,581.8	459.5	361.1	584.4	0.00	0.00	
1,770.0	42.12	38.16	1,604.0	475.4	373.5	604.6	0.00	0.00	
1,800.0	42.12	38.16	1,626.3	491.2	386.0	624.7	0.00	0.00	
1,830.0	42.12	38.16	1,648.6	507.0	398.4	644.8	0.00	0.00	
1,860.0	42.12	38.16	1,670.8	522.8	410.8	664.9	0.00	0.00	
1,890.0	42.12	38.16	1,693.1	538.6	423.3	685.0	0.00	0.00	
1,920.0	42.12	38.16	1,715.3	554.5	435.7	705.2	0.00	0.00	
1,950.0	42.12	38.16	1,737.6	570.3	448.1	725.3	0.00	0.00	
1,980.0	42.12	38.16	1,759.8	586.1	460.6	745.4	0.00	0.00	
2,010.0	42.12	38.16	1,782.1	601.9	473.0	765.5	0.00	0.00	
2,040.0	42.12	38.16	1,804.3	617.7	485.4	785.6	0.00	0.00	
2,070.0	42.12	38.16	1,826.6	633.6	497.8	805.8	0.00	0.00	
2,100.0	42.12	38.16	1,848.8	649.4	510.3	825.9	0.00	0.00	
2,130.0	42.12	38.16	1,871.1	665.2	522.7	846.0	0.00	0.00	
2,160.0	42.12	38.16	1,893.3	681.0	535.1	866.1	0.00	0.00	
2,190.0	42.12	38.16	1,915.6	696.8	547.6	886.2	0.00	0.00	
2,220.0	42.12	38.16	1,937.8	712.7	560.0	906.4	0.00	0.00	
2,250.0	42.12	38.16	1,960.1	728.5	572.4	926.5	0.00	0.00	
2,280.0	42.12	38.16	1,982.4	744.3	584.9	946.6	0.00	0.00	
2,310.0	42.12	38.16	2,004.6	760.1	597.3	966.7	0.00	0.00	
2,340.0	42.12	38.16	2,026.9	775.9	609.7	986.8	0.00	0.00	
2,370.0	42.12	38.16	2,049.1	791.8	622.2	1,007.0	0.00	0.00	
2,400.0	42.12	38.16	2,071.4	807.6	634.6	1,027.1	0.00	0.00	
2,430.0	42.12	38.16	2,093.6	823.4	647.0	1,047.2	0.00	0.00	
2,460.0	42.12	38.16	2,115.9	839.2	659.4	1,067.3	0.00	0.00	
2,490.0	42.12	38.16	2,138.1	855.0	671.9	1,087.4	0.00	0.00	

### Targets

Target Name	Dip Angle (°)	Dip Dir. (°)	TVD (ft)	+N/-S (ft)	+E/-W (ft)	Northing (ft)	Easting (ft)	Latitude	Longitude
- hit/miss target									
- Shape									
O04 696 MF06B-3 BHL	0.00	0.00	8,549.0	2,775.5	2,171.8	1,638,760.82	2,267,013.29	39° 33' 30.16 N	108° 6' 0.26 W
- plan misses target center by 6858.4ft at 2490.0ft MD (2138.1 TVD, 855.0 N, 671.9 E)									
- Rectangle (sides W30.0 H50.0 D0.0)									
Interp @ 4081.2 (NP MF	0.00	0.00	4,081.2	868.8	-348.3	1,636,927.29	2,264,439.47	39° 33' 11.32 N	108° 6' 32.44 W
- plan misses target center by 2194.6ft at 2490.0ft MD (2138.1 TVD, 855.0 N, 671.9 E)									
- Point									
O04 696 MF06B-3 TGT	0.00	0.00	5,589.0	2,785.5	2,188.8	1,638,770.36	2,267,030.56	39° 33' 30.26 N	108° 6' 0.04 W
- plan misses target center by 4235.1ft at 2490.0ft MD (2138.1 TVD, 855.0 N, 671.9 E)									
- Point									

# Planning Report

**Database:** USA EDM 5000 US Multi Users DB  
**Company:** EnCana Oil & Gas (USA) Inc  
**Project:** North Piceance  
**Site:** O04 696 (3rd)  
**Well:** NP MF06B-3 O04 696 (was 15A-4)  
**Wellbore:** DD  
**Design:** Plan #2

**Local Co-ordinate Reference:** Well NP MF06B-3 O04 696 (was 15A-4)  
**TVD Reference:** WELL @ 6044.0ft (Original Well Elev)  
**MD Reference:** WELL @ 6044.0ft (Original Well Elev)  
**North Reference:** True  
**Survey Calculation Method:** Minimum Curvature

## Planned Survey

Measured Depth (ft)	Inclination (°)	Azimuth (°)	Vertical Depth (ft)	+N/-S (ft)	+E/-W (ft)	Vertical Section (ft)	Dogleg Rate (°/100ft)	Build Rate (°/100ft)	Comments / Formations
2,500.0	42.12	38.16	2,145.5	860.3	676.0	1,094.1	0.00	0.00	
2,600.0	42.12	38.16	2,219.7	913.0	717.5	1,161.2	0.00	0.00	
2,700.0	42.12	38.16	2,293.9	965.8	758.9	1,228.3	0.00	0.00	
2,800.0	42.12	38.16	2,368.1	1,018.5	800.3	1,295.3	0.00	0.00	
2,900.0	42.12	38.16	2,442.3	1,071.2	841.8	1,362.4	0.00	0.00	
3,000.0	42.12	38.16	2,516.4	1,124.0	883.2	1,429.5	0.00	0.00	
3,100.0	42.12	38.16	2,590.6	1,176.7	924.6	1,496.5	0.00	0.00	
3,200.0	42.12	38.16	2,664.8	1,229.4	966.1	1,563.6	0.00	0.00	
3,300.0	42.12	38.16	2,739.0	1,282.2	1,007.5	1,630.7	0.00	0.00	
3,400.0	42.12	38.16	2,813.1	1,334.9	1,048.9	1,697.7	0.00	0.00	
3,500.0	42.12	38.16	2,887.3	1,387.6	1,090.4	1,764.8	0.00	0.00	
3,515.8	42.12	38.16	2,899.1	1,396.0	1,096.9	1,775.4	0.00	0.00	Interp @ 4081.2 (NP MF15A-4 O04 696 DD Pla
3,600.0	42.12	38.16	2,961.5	1,440.4	1,131.8	1,831.8	0.00	0.00	
3,700.0	42.12	38.16	3,035.7	1,493.1	1,173.3	1,898.9	0.00	0.00	
3,800.0	42.12	38.16	3,109.8	1,545.8	1,214.7	1,966.0	0.00	0.00	
3,900.0	42.12	38.16	3,184.0	1,598.6	1,256.1	2,033.0	0.00	0.00	
4,000.0	42.12	38.16	3,258.2	1,651.3	1,297.6	2,100.1	0.00	0.00	
4,100.0	42.12	38.16	3,332.4	1,704.0	1,339.0	2,167.2	0.00	0.00	
4,200.0	42.12	38.16	3,406.6	1,756.8	1,380.4	2,234.2	0.00	0.00	
4,300.0	42.12	38.16	3,480.7	1,809.5	1,421.9	2,301.3	0.00	0.00	
4,400.0	42.12	38.16	3,554.9	1,862.2	1,463.3	2,368.4	0.00	0.00	
4,500.0	42.12	38.16	3,629.1	1,915.0	1,504.8	2,435.4	0.00	0.00	
4,600.0	42.12	38.16	3,703.3	1,967.7	1,546.2	2,502.5	0.00	0.00	
4,700.0	42.12	38.16	3,777.4	2,020.4	1,587.6	2,569.6	0.00	0.00	
4,800.0	42.12	38.16	3,851.6	2,073.2	1,629.1	2,636.6	0.00	0.00	
4,900.0	42.12	38.16	3,925.8	2,125.9	1,670.5	2,703.7	0.00	0.00	
5,000.0	42.12	38.16	4,000.0	2,178.6	1,711.9	2,770.8	0.00	0.00	
5,100.0	42.12	38.16	4,074.2	2,231.4	1,753.4	2,837.8	0.00	0.00	
5,200.0	42.12	38.16	4,148.3	2,284.1	1,794.8	2,904.9	0.00	0.00	
5,300.0	42.12	38.16	4,222.5	2,336.8	1,836.2	2,972.0	0.00	0.00	
5,400.0	42.12	38.16	4,296.7	2,389.6	1,877.7	3,039.0	0.00	0.00	
5,415.5	42.12	38.16	4,308.1	2,397.7	1,884.1	3,049.4	0.00	0.00	Start Drop -3.00
5,500.0	39.58	38.16	4,372.1	2,441.2	1,918.2	3,104.7	3.00	-3.00	
5,600.0	36.58	38.16	4,450.8	2,489.7	1,956.4	3,166.3	3.00	-3.00	
5,700.0	33.58	38.16	4,532.6	2,534.9	1,991.9	3,223.8	3.00	-3.00	
5,800.0	30.58	38.16	4,617.3	2,576.6	2,024.7	3,276.9	3.00	-3.00	
5,900.0	27.58	38.16	4,704.7	2,614.8	2,054.7	3,325.5	3.00	-3.00	
6,000.0	24.58	38.16	4,794.5	2,649.4	2,081.9	3,369.5	3.00	-3.00	
6,100.0	21.58	38.16	4,886.5	2,680.2	2,106.1	3,408.7	3.00	-3.00	
6,200.0	18.58	38.16	4,980.4	2,707.2	2,127.3	3,443.0	3.00	-3.00	
6,271.9	16.42	38.16	5,049.0	2,724.2	2,140.7	3,464.6	3.00	-3.00	Williams Fork
6,300.0	15.58	38.16	5,076.0	2,730.3	2,145.4	3,472.4	3.00	-3.00	
6,313.5	15.18	38.16	5,089.0	2,733.1	2,147.6	3,475.9	3.00	-3.00	Top of Gas; Inc=15°
6,400.0	12.58	38.16	5,173.0	2,749.4	2,160.5	3,496.7	3.00	-3.00	
6,500.0	9.58	38.16	5,271.1	2,764.6	2,172.3	3,515.9	3.00	-3.00	
6,600.0	6.58	38.16	5,370.1	2,775.6	2,181.0	3,530.0	3.00	-3.00	
6,700.0	3.58	38.16	5,469.7	2,782.6	2,186.5	3,538.8	3.00	-3.00	
6,800.0	0.58	38.16	5,569.6	2,785.4	2,188.7	3,542.5	3.00	-3.00	
6,819.4	0.00	0.00	5,589.0	2,785.5	2,188.8	3,542.6	3.00	-3.00	EOD; Inc=0° - O04 696 MF06B-3 TGT (6.13.11)
6,900.0	0.20	239.45	5,669.6	2,785.4	2,188.7	3,542.4	0.25	0.25	
6,976.3	0.39	239.45	5,746.0	2,785.2	2,188.3	3,542.1	0.25	0.25	
7,000.0	0.39	239.45	5,769.6	2,785.1	2,188.2	3,541.9	0.00	0.00	

## Planning Report

<b>Database:</b>	USA EDM 5000 US Multi Users DB	<b>Local Co-ordinate Reference:</b>	Well NP MF06B-3 O04 696 (was 15A-4)
<b>Company:</b>	EnCana Oil & Gas (USA) Inc	<b>TVD Reference:</b>	WELL @ 6044.0ft (Original Well Elev)
<b>Project:</b>	North Piceance	<b>MD Reference:</b>	WELL @ 6044.0ft (Original Well Elev)
<b>Site:</b>	O04 696 (3rd)	<b>North Reference:</b>	True
<b>Well:</b>	NP MF06B-3 O04 696 (was 15A-4)	<b>Survey Calculation Method:</b>	Minimum Curvature
<b>Wellbore:</b>	DD		
<b>Design:</b>	Plan #2		

Planned Survey									
Measured Depth (ft)	Inclination (°)	Azimuth (°)	Vertical Depth (ft)	+N/-S (ft)	+E/-W (ft)	Vertical Section (ft)	Dogleg Rate (°/100ft)	Build Rate (°/100ft)	Comments / Formations
7,100.0	0.39	239.45	5,869.6	2,784.8	2,187.6	3,541.3	0.00	0.00	
7,200.0	0.39	239.45	5,969.6	2,784.4	2,187.0	3,540.6	0.00	0.00	
7,300.0	0.39	239.45	6,069.6	2,784.1	2,186.4	3,540.0	0.00	0.00	
7,400.0	0.39	239.45	6,169.6	2,783.8	2,185.8	3,539.4	0.00	0.00	
7,500.0	0.39	239.45	6,269.6	2,783.4	2,185.2	3,538.7	0.00	0.00	
7,600.0	0.39	239.45	6,369.6	2,783.1	2,184.7	3,538.1	0.00	0.00	
7,700.0	0.39	239.45	6,469.6	2,782.7	2,184.1	3,537.4	0.00	0.00	
7,800.0	0.39	239.45	6,569.6	2,782.4	2,183.5	3,536.8	0.00	0.00	
7,900.0	0.39	239.45	6,669.6	2,782.0	2,182.9	3,536.2	0.00	0.00	
8,000.0	0.39	239.45	6,769.6	2,781.7	2,182.3	3,535.5	0.00	0.00	
8,100.0	0.39	239.45	6,869.6	2,781.3	2,181.7	3,534.9	0.00	0.00	
8,200.0	0.39	239.45	6,969.6	2,781.0	2,181.1	3,534.3	0.00	0.00	
8,300.0	0.39	239.45	7,069.6	2,780.6	2,180.5	3,533.6	0.00	0.00	
8,400.0	0.39	239.45	7,169.6	2,780.3	2,179.9	3,533.0	0.00	0.00	
8,500.0	0.39	239.45	7,269.6	2,779.9	2,179.4	3,532.3	0.00	0.00	
8,600.0	0.39	239.45	7,369.6	2,779.6	2,178.8	3,531.7	0.00	0.00	
8,700.0	0.39	239.45	7,469.6	2,779.2	2,178.2	3,531.1	0.00	0.00	
8,800.0	0.39	239.45	7,569.6	2,778.9	2,177.6	3,530.4	0.00	0.00	
8,900.0	0.39	239.45	7,669.6	2,778.5	2,177.0	3,529.8	0.00	0.00	
9,000.0	0.39	239.45	7,769.6	2,778.2	2,176.4	3,529.2	0.00	0.00	
9,100.0	0.39	239.45	7,869.6	2,777.8	2,175.8	3,528.5	0.00	0.00	
9,200.0	0.39	239.45	7,969.6	2,777.5	2,175.2	3,527.9	0.00	0.00	
9,300.0	0.39	239.45	8,069.6	2,777.1	2,174.6	3,527.3	0.00	0.00	
9,400.0	0.39	239.45	8,169.6	2,776.8	2,174.0	3,526.6	0.00	0.00	
9,500.0	0.39	239.45	8,269.6	2,776.4	2,173.5	3,526.0	0.00	0.00	
9,600.0	0.39	239.45	8,369.6	2,776.1	2,172.9	3,525.3	0.00	0.00	
9,700.0	0.39	239.45	8,469.6	2,775.7	2,172.3	3,524.7	0.00	0.00	
9,779.4	0.39	239.45	8,549.0	2,775.5	2,171.8	3,524.2	0.00	0.00	Rollins - O04 696 MF06B-3 BHL (6.13.11)
9,800.0	0.39	239.45	8,569.6	2,775.4	2,171.7	3,524.1	0.00	0.00	
9,900.0	0.39	239.45	8,669.6	2,775.0	2,171.1	3,523.4	0.00	0.00	
9,929.4	0.39	239.45	8,699.0	2,774.9	2,170.9	3,523.2	0.00	0.00	Drillers TD @ 8699' TVD
10,000.0	0.39	239.45	8,769.6	2,774.7	2,170.5	3,522.8	0.00	0.00	
10,100.0	0.39	239.45	8,869.6	2,774.4	2,169.9	3,522.2	0.00	0.00	
10,200.0	0.39	239.45	8,969.6	2,774.0	2,169.3	3,521.5	0.00	0.00	
10,300.0	0.39	239.45	9,069.5	2,773.7	2,168.7	3,520.9	0.00	0.00	
10,400.0	0.39	239.45	9,169.5	2,773.3	2,168.1	3,520.2	0.00	0.00	
10,500.0	0.39	239.45	9,269.5	2,773.0	2,167.6	3,519.6	0.00	0.00	
10,600.0	0.39	239.45	9,369.5	2,772.6	2,167.0	3,519.0	0.00	0.00	
10,700.0	0.39	239.45	9,469.5	2,772.3	2,166.4	3,518.3	0.00	0.00	
10,800.0	0.39	239.45	9,569.5	2,771.9	2,165.8	3,517.7	0.00	0.00	
10,900.0	0.39	239.45	9,669.5	2,771.6	2,165.2	3,517.1	0.00	0.00	
11,000.0	0.39	239.45	9,769.5	2,771.2	2,164.6	3,516.4	0.00	0.00	
11,100.0	0.39	239.45	9,869.5	2,770.9	2,164.0	3,515.8	0.00	0.00	
11,200.0	0.39	239.45	9,969.5	2,770.5	2,163.4	3,515.1	0.00	0.00	
11,230.5	0.39	239.45	10,000.0	2,770.4	2,163.2	3,514.9	0.00	0.00	Permit TD @ 10000' TVD

## Planning Report

<b>Database:</b>	USA EDM 5000 US Multi Users DB	<b>Local Co-ordinate Reference:</b>	Well NP MF06B-3 O04 696 (was 15A-4)
<b>Company:</b>	EnCana Oil & Gas (USA) Inc	<b>TVD Reference:</b>	WELL @ 6044.0ft (Original Well Elev)
<b>Project:</b>	North Piceance	<b>MD Reference:</b>	WELL @ 6044.0ft (Original Well Elev)
<b>Site:</b>	O04 696 (3rd)	<b>North Reference:</b>	True
<b>Well:</b>	NP MF06B-3 O04 696 (was 15A-4)	<b>Survey Calculation Method:</b>	Minimum Curvature
<b>Wellbore:</b>	DD		
<b>Design:</b>	Plan #2		

Targets									
Target Name									
- hit/miss target	Dip Angle	Dip Dir.	TVD	+N/-S	+E/-W	Northing	Easting	Latitude	Longitude
- Shape	(°)	(°)	(ft)	(ft)	(ft)	(ft)	(ft)		
O04 696 MF06B-3 BHL - plan hits target center - Rectangle (sides W30.0 H50.0 D0.0)	0.00	0.00	8,549.0	2,775.5	2,171.8	1,638,760.82	2,267,013.29	39° 33' 30.16 N	108° 6' 0.26 W
Interp @ 4081.2 (NP MF - plan misses target center by 1940.1ft at 3515.8ft MD (2899.1 TVD, 1396.0 N, 1096.9 E) - Point	0.00	0.00	4,081.2	868.8	-348.3	1,636,927.29	2,264,439.47	39° 33' 11.32 N	108° 6' 32.44 W
O04 696 MF06B-3 TGT - plan hits target center - Point	0.00	0.00	5,589.0	2,785.5	2,188.8	1,638,770.36	2,267,030.56	39° 33' 30.26 N	108° 6' 0.04 W

Formations					
Measured Depth	Vertical Depth	Name	Lithology	Dip	Dip Direction
(ft)	(ft)			(°)	(°)
6,271.9	5,049.0	Williams Fork		0.00	
6,313.5	5,089.0	Top of Gas; Inc=15°		0.00	
9,779.4	8,549.0	Rollins		0.00	

Plan Annotations				
Measured Depth	Vertical Depth	Local Coordinates		Comment
(ft)	(ft)	+N/-S (ft)	+E/-W (ft)	
200.0	200.0	0.0	0.0	KOP @ 200'
1,603.9	1,480.9	387.8	304.7	EOB; Inc=42.12°
5,415.5	4,308.1	2,397.7	1,884.1	Start Drop -3.00
6,819.4	5,589.0	2,785.5	2,188.8	EOD; Inc=0°
9,929.4	8,699.0	2,785.2	2,188.3	Drillers TD @ 8699' TVD
11,230.5	10,000.0	2,775.5	2,171.8	Permit TD @ 10000' TVD

# **EnCana Oil & Gas (USA) Inc**

**North Piceance**

**O04 696 (3rd)**

**NP MF06B-3 O04 696 (was 15A-4)**

**DD**

**Plan #2**

## **Anticollision Report**

**14 June, 2011**



## Anticollision Report

<b>Company:</b>	EnCana Oil & Gas (USA) Inc	<b>Local Co-ordinate Reference:</b>	Well NP MF06B-3 O04 696 (was 15A-4)
<b>Project:</b>	North Piceance	<b>TVD Reference:</b>	WELL @ 6044.0ft (Original Well Elev)
<b>Reference Site:</b>	O04 696 (3rd)	<b>MD Reference:</b>	WELL @ 6044.0ft (Original Well Elev)
<b>Site Error:</b>	0.0ft	<b>North Reference:</b>	True
<b>Reference Well:</b>	NP MF06B-3 O04 696 (was 15A-4)	<b>Survey Calculation Method:</b>	Minimum Curvature
<b>Well Error:</b>	0.0ft	<b>Output errors are at</b>	2.00 sigma
<b>Reference Wellbore</b>	DD	<b>Database:</b>	EDM 5000.1 US Multi Users DB
<b>Reference Design:</b>	Plan #2	<b>Offset TVD Reference:</b>	Offset Datum

<b>Reference</b>	Plan #2		
<b>Filter type:</b>	NO GLOBAL FILTER: Using user defined selection & filtering criteria		
<b>Interpolation Method:</b>	MD Interval 100.0ft	<b>Error Model:</b>	Systematic Ellipse
<b>Depth Range:</b>	Unlimited	<b>Scan Method:</b>	Closest Approach 3D
<b>Results Limited by:</b>	Maximum center-center distance of 100.0ft	<b>Error Surface:</b>	Elliptical Conic
<b>Warning Levels Evaluated at:</b>	2.00 Sigma		

<b>Survey Tool Program</b>		<b>Date</b>	6/14/2011		
<b>From (ft)</b>	<b>To (ft)</b>	<b>Survey (Wellbore)</b>	<b>Tool Name</b>	<b>Description</b>	
0.0	11,230.5	Plan #2 (DD)	MWD	Geolink MWD	

# Anticollision Report

<b>Company:</b>	EnCana Oil & Gas (USA) Inc	<b>Local Co-ordinate Reference:</b>	Well NP MF06B-3 O04 696 (was 15A-4)
<b>Project:</b>	North Piceance	<b>TVD Reference:</b>	WELL @ 6044.0ft (Original Well Elev)
<b>Reference Site:</b>	O04 696 (3rd)	<b>MD Reference:</b>	WELL @ 6044.0ft (Original Well Elev)
<b>Site Error:</b>	0.0ft	<b>North Reference:</b>	True
<b>Reference Well:</b>	NP MF06B-3 O04 696 (was 15A-4)	<b>Survey Calculation Method:</b>	Minimum Curvature
<b>Well Error:</b>	0.0ft	<b>Output errors are at</b>	2.00 sigma
<b>Reference Wellbore</b>	DD	<b>Database:</b>	EDM 5000.1 US Multi Users DB
<b>Reference Design:</b>	Plan #2	<b>Offset TVD Reference:</b>	Offset Datum

## Summary

Site Name	Reference Measured Depth (ft)	Offset Measured Depth (ft)	Distance Between Centres (ft)	Between Ellipses (ft)	Separation Factor	Warning
<b>Offset Well - Wellbore - Design</b>						
C04 696 (NENW Sec4-T6S-R96W)						
N. Parachute C04 MF04D - DD - DD						Out of range
N. Parachute C04 MF04D - DD - Plan #2						Out of range
N. Parachute C04 MF04D - DD - Plan #3						Out of range
N. Parachute C04 MF08A - DD - DD						Out of range
N. Parachute C04 MF08A - DD - Plan #2						Out of range
N. Parachute C04 MF08A - DD - Plan #3						Out of range
N. Parachute C04 MF08A - DD - Plan #5						Out of range
N.P MF04B-3 C04 696 - DD - DD						Out of range
N.P MF04B-3 C04 696 - DD - Plan #1						Out of range
D31 595 (Lot 3 S31-T5S-R95W)						
NP EF11C D31 595 - DD - Plan #1						Out of range
NP EF11C D31 595 - DD - Plan #2						Out of range
NP EF11C D31 595 (was 14C) OLD Abandonnd - DD - Pla						Out of range
NP EF11C D31 595 (was 14C) OLD Abandonnd - DD - Pla						Out of range
N04 696 Pad (NESW Sec4-T6S-R96W)						
NP MF09A N04 696 - DD - DD						Out of range
NP MF09A N04 696 - DD - Plan #3						Out of range
NP MF09A N04 696 - DD - Plan #4						Out of range
O04 696 (3rd)						
NP MF01D-9 O04 696 (was 17C-4) - DD - Plan #2						Out of range
NP MF02A-9 O04 696 (was 18C-4) - DD - Plan #2						Out of range
NP MF06A-3 O04 696 (was 11C-3) - DD - Plan #2	200.0	200.0	20.5	19.9	32.955	CC, ES
NP MF06A-3 O04 696 (was 11C-3) - DD - Plan #2	1,000.0	1,006.1	96.6	89.8	14.211	SF
NP MF06C-3 O04 696 (was 09C-4) - DD - Plan #2	319.8	319.4	7.2	6.2	6.945	CC, ES
NP MF06C-3 O04 696 (was 09C-4) - DD - Plan #2	1,400.0	1,403.1	24.7	13.7	2.250	SF
NP MF06E-3 O04 696 (was 11B-3) - DD - Plan #2	200.0	200.0	11.8	11.2	18.979	CC, ES
NP MF06E-3 O04 696 (was 11B-3) - DD - Plan #2	1,600.0	1,596.8	92.3	72.9	4.765	SF
NP MF08B-9 O04 696 (was 01B-9) - DD - Plan #2						Out of range
NP MF11A-3 O04 696 (was 12C-3) - DD - Plan #2	200.0	200.0	8.1	7.4	12.962	CC
NP MF11A-3 O04 696 (was 12C-3) - DD - Plan #2	223.0	223.0	8.1	7.4	11.462	ES
NP MF11A-3 O04 696 (was 12C-3) - DD - Plan #2	1,500.0	1,513.3	86.1	75.0	7.809	SF
NP MF11B-3 O04 696 (was 14A-3) - DD - Plan #2	200.0	200.0	22.2	21.5	35.653	CC
NP MF11B-3 O04 696 (was 14A-3) - DD - Plan #2	300.0	300.9	22.5	21.5	23.030	ES
NP MF11B-3 O04 696 (was 14A-3) - DD - Plan #2	1,300.0	1,303.6	95.1	82.4	7.506	SF
NP MF11D-3 O04 696 (was 14B-3) - DD - Plan #2	200.0	200.0	29.4	28.8	47.377	CC, ES
NP MF11D-3 O04 696 (was 14B-3) - DD - Plan #2	1,100.0	1,103.6	96.4	87.7	11.035	SF
NP MF11E-3 O04 696 (was 13A-3) - DD - Plan #2	200.0	200.0	48.6	48.0	78.256	CC
NP MF11E-3 O04 696 (was 13A-3) - DD - Plan #2	300.0	302.3	48.9	47.9	50.074	ES
NP MF11E-3 O04 696 (was 13A-3) - DD - Plan #2	1,000.0	1,010.4	100.0	93.2	14.745	SF
NP MF11G-3 O04 696 (was 14C-3) - DD - Plan #2	200.0	200.0	56.3	55.7	90.612	CC, ES
NP MF11G-3 O04 696 (was 14C-3) - DD - Plan #2	700.0	708.7	91.8	89.1	34.591	SF
NP MF14A-3 O04 696 (was 13B-3) - DD - Plan #2	200.0	200.0	49.4	48.8	79.582	CC, ES
NP MF14A-3 O04 696 (was 13B-3) - DD - Plan #2	700.0	703.6	83.6	80.4	25.577	SF
NP MF14C-3 O04 696 (was 14D-3) - DD - Plan #2	200.0	200.0	57.0	56.4	91.796	CC, ES
NP MF14C-3 O04 696 (was 14D-3) - DD - Plan #2	700.0	701.3	99.6	96.4	30.778	SF
NP MF14D-3 O04 696 (was 19A-3) - DD - Plan #2	200.0	200.0	76.0	75.4	122.278	CC, ES
NP MF14D-3 O04 696 (was 19A-3) - DD - Plan #2	500.0	503.9	94.1	92.4	55.179	SF
NP MF14E-3 O04 696 (was 19B-3) - DD - Plan #2	200.0	200.0	76.5	75.9	123.121	CC, ES
NP MF14E-3 O04 696 (was 19B-3) - DD - Plan #2	500.0	501.3	95.1	93.3	51.593	SF
NP MF15A-4 O04 696 (was 11D-3) - DD - Plan #2	100.0	100.0	28.2	27.9	103.390	CC
NP MF15A-4 O04 696 (was 11D-3) - DD - Plan #2	200.0	200.0	28.2	27.5	45.306	ES

CC - Min centre to center distance or convergent point, SF - min separation factor, ES - min ellipse separation

## Anticollision Report

<b>Company:</b>	EnCana Oil & Gas (USA) Inc	<b>Local Co-ordinate Reference:</b>	Well NP MF06B-3 O04 696 (was 15A-4)
<b>Project:</b>	North Piceance	<b>TVD Reference:</b>	WELL @ 6044.0ft (Original Well Elev)
<b>Reference Site:</b>	O04 696 (3rd)	<b>MD Reference:</b>	WELL @ 6044.0ft (Original Well Elev)
<b>Site Error:</b>	0.0ft	<b>North Reference:</b>	True
<b>Reference Well:</b>	NP MF06B-3 O04 696 (was 15A-4)	<b>Survey Calculation Method:</b>	Minimum Curvature
<b>Well Error:</b>	0.0ft	<b>Output errors are at</b>	2.00 sigma
<b>Reference Wellbore</b>	DD	<b>Database:</b>	EDM 5000.1 US Multi Users DB
<b>Reference Design:</b>	Plan #2	<b>Offset TVD Reference:</b>	Offset Datum

Summary						
Site Name	Reference Measured Depth (ft)	Offset Measured Depth (ft)	Distance Between Centres (ft)	Distance Between Ellipses (ft)	Separation Factor	Warning
Offset Well - Wellbore - Design						
O04 696 (3rd)						
NP MF15A-4 O04 696 (was 11D-3) - DD - Plan #2	600.0	599.8	56.6	54.2	22.761	SF
NP MF15D-4 O04 696 (was 01B-9) - DD - Plan #2						Out of range
NP MF18B-4 O04 696 (was 01A-9) - DD - Plan #2						Out of range
NP MF19A-3 O04 696 (was 17B-4) - DD - Plan #2	200.0	200.0	84.5	83.8	135.918	CC, ES
NP MF19A-3 O04 696 (was 17B-4) - DD - Plan #2	400.0	401.3	93.6	92.2	69.966	SF
NP MF19C-3 O04 696 (was 20B-3) - DD - Plan #2	200.0	200.0	85.0	84.4	136.797	CC, ES
NP MF19C-3 O04 696 (was 20B-3) - DD - Plan #2	400.0	399.4	95.5	94.1	69.679	SF
NP MF19D-3 O04 696 (was 19C-3) - DD - Plan #2						Out of range
NP MF19E-3 O04 696 (was 19D-3) - DD - Plan #2						Out of range
NP MF20F-3 O04 696 (was 20D-3) - DD - Plan #2						Out of range

## Anticollision Report

<b>Company:</b>	EnCana Oil & Gas (USA) Inc	<b>Local Co-ordinate Reference:</b>	Well NP MF06B-3 O04 696 (was 15A-4)
<b>Project:</b>	North Piceance	<b>TVD Reference:</b>	WELL @ 6044.0ft (Original Well Elev)
<b>Reference Site:</b>	O04 696 (3rd)	<b>MD Reference:</b>	WELL @ 6044.0ft (Original Well Elev)
<b>Site Error:</b>	0.0ft	<b>North Reference:</b>	True
<b>Reference Well:</b>	NP MF06B-3 O04 696 (was 15A-4)	<b>Survey Calculation Method:</b>	Minimum Curvature
<b>Well Error:</b>	0.0ft	<b>Output errors are at</b>	2.00 sigma
<b>Reference Wellbore</b>	DD	<b>Database:</b>	EDM 5000.1 US Multi Users DB
<b>Reference Design:</b>	Plan #2	<b>Offset TVD Reference:</b>	Offset Datum

<b>Offset Design</b> O04 696 (3rd) - NP MF06A-3 O04 696 (was 11C-3) - DD - Plan #2												<b>Offset Site Error:</b>	0.0 ft
Survey Program: 0-MWD												<b>Offset Well Error:</b>	0.0 ft
Reference		Offset		Semi Major Axis		Distance							
Measured Depth (ft)	Vertical Depth (ft)	Measured Depth (ft)	Vertical Depth (ft)	Reference (ft)	Offset (ft)	Highside Toolface (°)	Offset Wellbore Centre +N/-S (ft)	+E/-W (ft)	Between Centres (ft)	Between Ellipses (ft)	Total Uncertainty Axis	Separation Factor	Warning
0.0	0.0	0.0	0.0	0.0	0.0	-142.26	-16.2	-12.5	20.5				
100.0	100.0	100.0	100.0	0.1	0.1	-142.26	-16.2	-12.5	20.5	20.2	0.27	75.206	
200.0	200.0	200.0	200.0	0.3	0.3	-142.26	-16.2	-12.5	20.5	19.9	0.62	32.955 CC, ES	
300.0	300.0	300.8	300.8	0.5	0.5	-175.94	-13.5	-12.5	21.1	20.1	0.98	21.606	
400.0	399.6	401.5	401.1	0.7	0.7	-164.18	-5.6	-12.5	23.5	22.2	1.36	17.295	
500.0	498.8	501.8	500.5	1.0	1.0	-150.05	7.6	-12.5	29.2	27.4	1.85	15.772	
600.0	597.1	601.5	598.6	1.4	1.4	-138.13	25.9	-12.5	39.0	36.5	2.52	15.462	
700.0	694.3	700.6	694.9	1.8	1.8	-129.62	49.0	-12.5	52.8	49.4	3.37	15.670	
800.0	790.2	801.8	792.1	2.4	2.3	-124.42	76.9	-10.4	68.3	63.9	4.37	15.630	
900.0	884.4	903.6	888.9	3.0	2.9	-121.61	108.0	-4.1	83.0	77.5	5.51	15.058	
1,000.0	976.8	1,006.1	984.8	3.7	3.6	-120.03	142.6	6.6	96.6	89.8	6.80	14.211 SF	

# Anticollision Report

<b>Company:</b>	EnCana Oil & Gas (USA) Inc	<b>Local Co-ordinate Reference:</b>	Well NP MF06B-3 O04 696 (was 15A-4)
<b>Project:</b>	North Piceance	<b>TVD Reference:</b>	WELL @ 6044.0ft (Original Well Elev)
<b>Reference Site:</b>	O04 696 (3rd)	<b>MD Reference:</b>	WELL @ 6044.0ft (Original Well Elev)
<b>Site Error:</b>	0.0ft	<b>North Reference:</b>	True
<b>Reference Well:</b>	NP MF06B-3 O04 696 (was 15A-4)	<b>Survey Calculation Method:</b>	Minimum Curvature
<b>Well Error:</b>	0.0ft	<b>Output errors are at</b>	2.00 sigma
<b>Reference Wellbore</b>	DD	<b>Database:</b>	EDM 5000.1 US Multi Users DB
<b>Reference Design:</b>	Plan #2	<b>Offset TVD Reference:</b>	Offset Datum

Offset Design O04 696 (3rd) - NP MF06C-3 O04 696 (was 09C-4) - DD - Plan #2														Offset Site Error:	0.0 ft
Survey Program: 0-MWD														Offset Well Error:	0.0 ft
Reference		Offset		Semi Major Axis			Distance				Total		Warning		
Measured Depth (ft)	Vertical Depth (ft)	Measured Depth (ft)	Vertical Depth (ft)	Reference (ft)	Offset (ft)	Highside Toolface (°)	Offset Wellbore Centre +N/-S (ft)	+E/-W (ft)	Between Centres (ft)	Between Ellipses (ft)	Uncertainty Axis	Separation Factor			
0.0	0.0	0.0	0.0	0.0	0.0	37.75	6.1	4.7	7.7						
100.0	100.0	100.0	100.0	0.1	0.1	37.75	6.1	4.7	7.7	7.4	0.27	28.197			
200.0	200.0	200.0	200.0	0.3	0.3	37.75	6.1	4.7	7.7	7.1	0.62	12.356			
300.0	300.0	299.7	299.6	0.5	0.5	-13.47	8.7	4.7	7.3	6.3	0.97	7.500			
319.8	319.7	319.4	319.3	0.5	0.5	-19.46	9.8	4.6	7.2	6.2	1.04	6.945 CC, ES			
400.0	399.6	399.2	398.8	0.7	0.7	-49.95	16.4	4.7	8.4	7.0	1.35	6.180			
500.0	498.8	498.9	497.8	1.0	1.0	-73.37	28.0	7.7	11.7	9.8	1.89	6.206			
600.0	597.1	598.8	596.3	1.4	1.3	-85.26	43.1	14.5	15.3	12.7	2.61	5.881			
700.0	694.3	698.8	694.0	1.8	1.7	-92.74	61.8	25.1	18.5	15.0	3.49	5.308			
800.0	790.2	799.1	790.7	2.4	2.2	-98.44	84.0	39.4	21.1	16.6	4.52	4.669			
900.0	884.4	899.4	886.0	3.0	2.8	-103.46	109.6	57.5	23.1	17.4	5.69	4.057			
1,000.0	976.8	999.9	979.7	3.7	3.5	-108.39	138.5	79.4	24.4	17.5	6.95	3.511			
1,100.0	1,067.1	1,100.6	1,071.5	4.5	4.2	-113.64	170.8	104.9	25.1	16.9	8.25	3.047			
1,200.0	1,154.9	1,201.3	1,161.2	5.4	5.1	-119.55	206.3	134.1	25.3	15.9	9.48	2.673			
1,300.0	1,240.2	1,302.1	1,248.4	6.4	6.0	-126.51	244.9	166.8	25.1	14.6	10.47	2.399			
1,400.0	1,322.6	1,403.1	1,332.9	7.5	7.1	-134.87	286.6	202.9	24.7	13.7	10.97	2.250 SF			
1,500.0	1,401.9	1,504.1	1,414.5	8.7	8.2	-144.95	331.2	242.5	24.3	13.7	10.62	2.290			
1,548.9	1,439.5	1,553.5	1,453.2	9.3	8.8	-150.54	354.0	263.0	24.3	14.2	10.03	2.418			
1,600.0	1,477.9	1,604.9	1,492.7	9.9	9.4	-156.84	378.4	285.1	24.5	15.4	9.08	2.693			
1,700.0	1,552.1	1,704.8	1,569.1	11.2	10.7	-169.07	426.0	328.3	26.6	19.7	6.93	3.841			
1,800.0	1,626.3	1,804.6	1,645.5	12.4	11.9	-179.09	473.6	371.5	29.8	23.7	6.04	4.930			
1,900.0	1,700.5	1,904.4	1,721.8	13.7	13.1	173.00	521.2	414.7	33.7	26.5	7.21	4.673			
2,000.0	1,774.7	2,004.3	1,798.2	15.0	14.3	166.82	568.8	458.0	38.1	28.6	9.52	4.000			
2,100.0	1,848.8	2,104.1	1,874.6	16.3	15.5	161.97	616.4	501.2	42.8	30.7	12.16	3.523			
2,200.0	1,923.0	2,203.9	1,950.9	17.5	16.8	158.10	664.0	544.4	47.8	33.0	14.83	3.227			
2,300.0	1,997.2	2,303.7	2,027.3	18.8	18.0	154.98	711.6	587.6	53.0	35.6	17.44	3.040			
2,400.0	2,071.4	2,403.6	2,103.7	20.1	19.2	152.42	759.2	630.8	58.3	38.3	19.97	2.920			
2,500.0	2,145.5	2,503.4	2,180.0	21.3	20.4	150.29	806.8	674.1	63.7	41.3	22.44	2.839			
2,600.0	2,219.7	2,603.2	2,256.4	22.6	21.7	148.49	854.4	717.3	69.2	44.3	24.85	2.785			
2,700.0	2,293.9	2,703.1	2,332.8	23.9	22.9	146.96	902.0	760.5	74.7	47.5	27.20	2.747			
2,800.0	2,368.1	2,802.9	2,409.1	25.2	24.1	145.64	949.6	803.7	80.3	50.8	29.52	2.721			
2,900.0	2,442.3	2,902.7	2,485.5	26.4	25.4	144.49	997.2	846.9	85.9	54.1	31.79	2.703			
3,000.0	2,516.4	3,002.5	2,561.9	27.7	26.6	143.48	1,044.8	890.2	91.6	57.5	34.04	2.690			
3,100.0	2,590.6	3,102.4	2,638.2	29.0	27.8	142.59	1,092.4	933.4	97.2	61.0	36.26	2.682			

CC - Min centre to center distance or convergent point, SF - min separation factor, ES - min ellipse separation

# Anticollision Report

<b>Company:</b>	EnCana Oil & Gas (USA) Inc	<b>Local Co-ordinate Reference:</b>	Well NP MF06B-3 O04 696 (was 15A-4)
<b>Project:</b>	North Piceance	<b>TVD Reference:</b>	WELL @ 6044.0ft (Original Well Elev)
<b>Reference Site:</b>	O04 696 (3rd)	<b>MD Reference:</b>	WELL @ 6044.0ft (Original Well Elev)
<b>Site Error:</b>	0.0ft	<b>North Reference:</b>	True
<b>Reference Well:</b>	NP MF06B-3 O04 696 (was 15A-4)	<b>Survey Calculation Method:</b>	Minimum Curvature
<b>Well Error:</b>	0.0ft	<b>Output errors are at</b>	2.00 sigma
<b>Reference Wellbore</b>	DD	<b>Database:</b>	EDM 5000.1 US Multi Users DB
<b>Reference Design:</b>	Plan #2	<b>Offset TVD Reference:</b>	Offset Datum

Offset Design												O04 696 (3rd) - NP MF06E-3 O04 696 (was 11B-3) - DD - Plan #2		Offset Site Error:		0.0 ft
Survey Program: 0-MWD														Offset Well Error:		0.0 ft
Reference		Offset		Semi Major Axis			Distance							Warning		
Measured Depth (ft)	Vertical Depth (ft)	Measured Depth (ft)	Vertical Depth (ft)	Reference (ft)	Offset (ft)	Highside Toolface (°)	Offset Wellbore Centre		Between Centres (ft)	Between Ellipses (ft)	Total Uncertainty Axis	Separation Factor				
							+N/-S (ft)	+E/-W (ft)								
0.0	0.0	0.0	0.0	0.0	0.0	85.10	1.0	11.7	11.8							
100.0	100.0	100.0	100.0	0.1	0.1	85.10	1.0	11.7	11.8	11.5	0.27	43.311				
200.0	200.0	200.0	200.0	0.3	0.3	85.10	1.0	11.7	11.8	11.2	0.62	18.979 CC, ES				
300.0	300.0	299.4	299.4	0.5	0.5	52.14	2.0	14.1	12.5	11.6	0.98	12.857				
400.0	399.6	398.7	398.3	0.7	0.7	64.21	4.9	21.3	15.3	13.9	1.38	11.083				
500.0	498.8	498.1	496.9	1.0	1.0	75.57	10.1	33.0	20.3	18.4	1.91	10.667				
600.0	597.1	597.6	594.8	1.4	1.3	82.45	19.2	48.0	26.1	23.5	2.61	10.016				
700.0	694.3	697.2	691.9	1.8	1.8	86.78	32.3	66.2	32.2	28.7	3.49	9.238				
800.0	790.2	796.9	787.8	2.4	2.3	89.70	49.3	87.7	38.6	34.0	4.56	8.468				
900.0	884.4	896.7	882.2	3.0	2.9	91.76	70.1	112.3	45.1	39.3	5.81	7.765				
1,000.0	976.8	996.6	974.9	3.7	3.6	93.27	94.8	140.0	51.7	44.4	7.24	7.141				
1,100.0	1,067.1	1,096.5	1,065.6	4.5	4.4	94.41	123.3	170.7	58.3	49.5	8.85	6.593				
1,200.0	1,154.9	1,196.6	1,154.1	5.4	5.3	95.28	155.5	204.4	65.0	54.4	10.64	6.114				
1,300.0	1,240.2	1,296.7	1,240.2	6.4	6.3	95.96	191.3	240.9	71.8	59.1	12.61	5.692				
1,400.0	1,322.6	1,396.9	1,323.5	7.5	7.3	96.49	230.7	280.2	78.5	63.7	14.75	5.320				
1,500.0	1,401.9	1,497.1	1,403.9	8.7	8.5	96.95	273.4	322.1	85.1	68.1	17.05	4.995				
1,600.0	1,477.9	1,596.8	1,482.7	9.9	9.6	99.37	317.1	364.7	92.3	72.9	19.37	4.765 SF				

# Anticollision Report

<b>Company:</b>	EnCana Oil & Gas (USA) Inc	<b>Local Co-ordinate Reference:</b>	Well NP MF06B-3 O04 696 (was 15A-4)
<b>Project:</b>	North Piceance	<b>TVD Reference:</b>	WELL @ 6044.0ft (Original Well Elev)
<b>Reference Site:</b>	O04 696 (3rd)	<b>MD Reference:</b>	WELL @ 6044.0ft (Original Well Elev)
<b>Site Error:</b>	0.0ft	<b>North Reference:</b>	True
<b>Reference Well:</b>	NP MF06B-3 O04 696 (was 15A-4)	<b>Survey Calculation Method:</b>	Minimum Curvature
<b>Well Error:</b>	0.0ft	<b>Output errors are at</b>	2.00 sigma
<b>Reference Wellbore</b>	DD	<b>Database:</b>	EDM 5000.1 US Multi Users DB
<b>Reference Design:</b>	Plan #2	<b>Offset TVD Reference:</b>	Offset Datum

Offset Design													O04 696 (3rd) - NP MF11A-3 O04 696 (was 12C-3) - DD - Plan #2		Offset Site Error:		0.0 ft
Survey Program: 0-MWD													Offset Well Error:		0.0 ft		
Reference		Offset		Semi Major Axis			Distance							Warning			
Measured Depth (ft)	Vertical Depth (ft)	Measured Depth (ft)	Vertical Depth (ft)	Reference (ft)	Offset (ft)	Highside Toolface (°)	Offset Wellbore Centre +N/-S (ft)	+E/-W (ft)	Between Centres (ft)	Between Ellipses (ft)	Total Uncertainty Axis	Separation Factor					
0.0	0.0	0.0	0.0	0.0	0.0	128.92	-5.1	6.3	8.1								
100.0	100.0	100.0	100.0	0.1	0.1	128.92	-5.1	6.3	8.1	7.8	0.27	29.579					
200.0	200.0	200.0	200.0	0.3	0.3	128.92	-5.1	6.3	8.1	7.4	0.62	12.962 CC					
223.0	223.0	223.0	223.0	0.4	0.4	91.74	-5.1	6.3	8.1	7.4	0.70	11.462 ES					
300.0	300.0	300.0	300.0	0.5	0.5	108.66	-5.1	6.3	8.5	7.5	0.98	8.693					
400.0	399.6	400.1	400.0	0.7	0.7	134.32	-3.1	8.0	11.4	10.0	1.35	8.432					
500.0	498.8	500.5	500.1	1.0	0.9	147.48	3.0	13.0	15.6	13.9	1.73	9.040					
600.0	597.1	601.2	599.9	1.4	1.2	154.34	13.1	21.5	20.4	18.3	2.11	9.642					
700.0	694.3	702.1	699.2	1.8	1.5	158.18	27.3	33.4	25.3	22.8	2.51	10.094					
800.0	790.2	803.4	797.6	2.4	1.9	160.42	45.5	48.7	30.4	27.5	2.93	10.386					
900.0	884.4	904.9	894.8	3.0	2.5	161.72	67.7	67.3	35.4	32.1	3.36	10.535					
1,000.0	976.8	1,006.5	990.5	3.7	3.1	162.23	93.8	89.4	40.6	36.7	3.85	10.548					
1,100.0	1,067.1	1,107.9	1,084.2	4.5	3.8	160.48	122.2	115.8	46.6	42.1	4.53	10.291					
1,200.0	1,154.9	1,209.5	1,175.9	5.4	4.6	156.97	152.8	146.8	54.0	48.4	5.55	9.727					
1,300.0	1,240.2	1,310.9	1,265.3	6.4	5.6	152.55	185.3	182.2	62.8	55.8	6.98	9.005					
1,400.0	1,322.6	1,412.3	1,352.0	7.5	6.6	147.81	219.6	222.0	73.4	64.6	8.82	8.326					
1,500.0	1,401.9	1,513.3	1,435.6	8.7	7.7	143.18	255.5	265.7	86.1	75.0	11.02	7.809 SF					

# Anticollision Report

<b>Company:</b>	EnCana Oil & Gas (USA) Inc	<b>Local Co-ordinate Reference:</b>	Well NP MF06B-3 O04 696 (was 15A-4)
<b>Project:</b>	North Piceance	<b>TVD Reference:</b>	WELL @ 6044.0ft (Original Well Elev)
<b>Reference Site:</b>	O04 696 (3rd)	<b>MD Reference:</b>	WELL @ 6044.0ft (Original Well Elev)
<b>Site Error:</b>	0.0ft	<b>North Reference:</b>	True
<b>Reference Well:</b>	NP MF06B-3 O04 696 (was 15A-4)	<b>Survey Calculation Method:</b>	Minimum Curvature
<b>Well Error:</b>	0.0ft	<b>Output errors are at</b>	2.00 sigma
<b>Reference Wellbore</b>	DD	<b>Database:</b>	EDM 5000.1 US Multi Users DB
<b>Reference Design:</b>	Plan #2	<b>Offset TVD Reference:</b>	Offset Datum

Offset Design													Offset Site Error:		0.0 ft
Survey Program: 0-MWD													Offset Well Error:		0.0 ft
Reference		Offset		Semi Major Axis			Distance						Warning		
Measured Depth (ft)	Vertical Depth (ft)	Measured Depth (ft)	Vertical Depth (ft)	Reference (ft)	Offset (ft)	Highside Toolface (°)	Offset Wellbore Centre +N/-S (ft)	+E/-W (ft)	Between Centres (ft)	Between Ellipses (ft)	Total Uncertainty Axis	Separation Factor			
0.0	0.0	0.0	0.0	0.0	0.0	-163.57	-21.2	-6.3	22.2						
100.0	100.0	100.0	100.0	0.1	0.1	-163.57	-21.2	-6.3	22.2	21.9	0.27	81.362			
200.0	200.0	200.0	200.0	0.3	0.3	-163.57	-21.2	-6.3	22.2	21.5	0.62	35.653	CC		
300.0	300.0	300.9	300.9	0.5	0.5	156.66	-19.7	-4.1	22.5	21.5	0.98	23.030	ES		
400.0	399.6	401.8	401.4	0.7	0.7	152.13	-14.9	2.3	23.6	22.2	1.36	17.339			
500.0	498.8	502.7	501.4	1.0	1.0	145.52	-7.0	13.0	25.7	23.9	1.83	14.061			
600.0	597.1	603.4	600.4	1.4	1.4	138.03	4.0	27.9	29.1	26.6	2.45	11.854			
700.0	694.3	704.0	698.2	1.8	1.8	130.75	18.1	46.9	34.0	30.7	3.30	10.307			
800.0	790.2	804.5	794.4	2.4	2.4	124.37	35.2	70.0	40.5	36.1	4.37	9.262			
900.0	884.4	904.7	888.9	3.0	3.0	119.08	55.2	97.1	48.5	42.9	5.65	8.580			
1,000.0	976.8	1,004.8	981.2	3.7	3.8	114.81	78.1	128.1	58.1	50.9	7.14	8.138			
1,100.0	1,067.1	1,104.7	1,071.2	4.5	4.6	111.39	103.8	162.8	69.1	60.3	8.80	7.846			
1,200.0	1,154.9	1,204.3	1,158.6	5.4	5.5	108.63	132.2	201.2	81.4	70.8	10.65	7.647			
1,300.0	1,240.2	1,303.6	1,243.2	6.4	6.6	106.38	163.2	243.0	95.1	82.4	12.67	7.506	SF		



# Anticollision Report

<b>Company:</b>	EnCana Oil & Gas (USA) Inc	<b>Local Co-ordinate Reference:</b>	Well NP MF06B-3 O04 696 (was 15A-4)
<b>Project:</b>	North Piceance	<b>TVD Reference:</b>	WELL @ 6044.0ft (Original Well Elev)
<b>Reference Site:</b>	O04 696 (3rd)	<b>MD Reference:</b>	WELL @ 6044.0ft (Original Well Elev)
<b>Site Error:</b>	0.0ft	<b>North Reference:</b>	True
<b>Reference Well:</b>	NP MF06B-3 O04 696 (was 15A-4)	<b>Survey Calculation Method:</b>	Minimum Curvature
<b>Well Error:</b>	0.0ft	<b>Output errors are at</b>	2.00 sigma
<b>Reference Wellbore</b>	DD	<b>Database:</b>	EDM 5000.1 US Multi Users DB
<b>Reference Design:</b>	Plan #2	<b>Offset TVD Reference:</b>	Offset Datum

<b>Offset Design</b> O04 696 (3rd) - NP MF11D-3 O04 696 (was 14B-3) - DD - Plan #2													Offset Site Error:	0.0 ft
Survey Program: 0-MWD													Offset Well Error:	0.0 ft
Reference		Offset		Semi Major Axis			Distance						Warning	
Measured Depth (ft)	Vertical Depth (ft)	Measured Depth (ft)	Vertical Depth (ft)	Reference (ft)	Offset (ft)	Highside Toolface (°)	Offset Wellbore Centre +N/-S (ft)	+E/-W (ft)	Between Centres (ft)	Between Ellipses (ft)	Total Uncertainty Axis	Separation Factor		
0.0	0.0	0.0	0.0	0.0	0.0	-158.13	-27.3	-11.0	29.4					
100.0	100.0	100.0	100.0	0.1	0.1	-158.13	-27.3	-11.0	29.4	29.2	0.27	108.117		
200.0	200.0	200.0	200.0	0.3	0.3	-158.13	-27.3	-11.0	29.4	28.8	0.62	47.377 CC, ES		
300.0	300.0	301.2	301.2	0.5	0.5	161.95	-26.0	-8.6	29.9	28.9	0.98	30.601		
400.0	399.6	402.4	402.0	0.7	0.7	156.98	-22.0	-1.7	31.4	30.0	1.36	23.089		
500.0	498.8	503.4	502.1	1.0	1.0	149.78	-15.3	9.9	34.3	32.5	1.82	18.820		
600.0	597.1	604.2	601.2	1.4	1.4	141.71	-6.1	26.0	39.1	36.7	2.45	15.988		
700.0	694.3	704.8	698.9	1.8	1.8	133.99	5.7	46.6	46.1	42.9	3.29	14.031		
800.0	790.2	805.1	795.0	2.4	2.4	127.33	20.0	71.5	55.4	51.1	4.35	12.732		
900.0	884.4	905.0	889.1	3.0	3.0	121.89	36.7	100.6	67.0	61.4	5.63	11.901		
1,000.0	976.8	1,004.5	981.0	3.7	3.8	117.54	55.8	133.8	80.7	73.6	7.09	11.375		
1,100.0	1,067.1	1,103.6	1,070.3	4.5	4.6	114.07	77.1	171.0	96.4	87.7	8.74	11.035 SF		

# Anticollision Report

<b>Company:</b>	EnCana Oil & Gas (USA) Inc	<b>Local Co-ordinate Reference:</b>	Well NP MF06B-3 O04 696 (was 15A-4)
<b>Project:</b>	North Piceance	<b>TVD Reference:</b>	WELL @ 6044.0ft (Original Well Elev)
<b>Reference Site:</b>	O04 696 (3rd)	<b>MD Reference:</b>	WELL @ 6044.0ft (Original Well Elev)
<b>Site Error:</b>	0.0ft	<b>North Reference:</b>	True
<b>Reference Well:</b>	NP MF06B-3 O04 696 (was 15A-4)	<b>Survey Calculation Method:</b>	Minimum Curvature
<b>Well Error:</b>	0.0ft	<b>Output errors are at</b>	2.00 sigma
<b>Reference Wellbore</b>	DD	<b>Database:</b>	EDM 5000.1 US Multi Users DB
<b>Reference Design:</b>	Plan #2	<b>Offset TVD Reference:</b>	Offset Datum

Offset Design													O04 696 (3rd) - NP MF11E-3 O04 696 (was 13A-3) - DD - Plan #2		Offset Site Error:		0.0 ft
Survey Program:													0-MWD		Offset Well Error:		0.0 ft
Reference		Offset		Semi Major Axis			Distance							Warning			
Measured Depth (ft)	Vertical Depth (ft)	Measured Depth (ft)	Vertical Depth (ft)	Reference (ft)	Offset (ft)	Highside Toolface (°)	Offset Wellbore Centre +N/-S (ft)	+E/-W (ft)	Between Centres (ft)	Between Ellipses (ft)	Total Uncertainty Axis	Separation Factor					
0.0	0.0	0.0	0.0	0.0	0.0	-142.25	-38.4	-29.8	48.6								
100.0	100.0	100.0	100.0	0.1	0.1	-142.25	-38.4	-29.8	48.6	48.4	0.27	178.583					
200.0	200.0	200.0	200.0	0.3	0.3	-142.25	-38.4	-29.8	48.6	48.0	0.62	78.256	CC				
300.0	300.0	302.3	302.2	0.5	0.5	178.13	-37.3	-27.3	48.9	47.9	0.98	50.074	ES				
400.0	399.6	404.5	404.1	0.7	0.7	173.88	-33.8	-19.8	49.8	48.5	1.34	37.081					
500.0	498.8	506.5	505.2	1.0	1.0	167.22	-28.1	-7.5	52.0	50.2	1.76	29.556					
600.0	597.1	608.2	605.1	1.4	1.4	158.96	-20.2	9.7	56.0	53.7	2.29	24.422					
700.0	694.3	709.5	703.5	1.8	1.9	150.16	-10.0	31.5	62.5	59.5	3.04	20.589					
800.0	790.2	810.4	800.0	2.4	2.4	141.81	2.2	58.0	72.0	67.9	4.04	17.807					
900.0	884.4	910.7	894.4	3.0	3.1	134.51	16.5	88.8	84.5	79.2	5.30	15.937					
1,000.0	976.8	1,010.4	986.3	3.7	3.8	128.42	32.8	123.9	100.0	93.2	6.78	14.745	SF				

## Anticollision Report

<b>Company:</b>	EnCana Oil & Gas (USA) Inc	<b>Local Co-ordinate Reference:</b>	Well NP MF06B-3 O04 696 (was 15A-4)
<b>Project:</b>	North Piceance	<b>TVD Reference:</b>	WELL @ 6044.0ft (Original Well Elev)
<b>Reference Site:</b>	O04 696 (3rd)	<b>MD Reference:</b>	WELL @ 6044.0ft (Original Well Elev)
<b>Site Error:</b>	0.0ft	<b>North Reference:</b>	True
<b>Reference Well:</b>	NP MF06B-3 O04 696 (was 15A-4)	<b>Survey Calculation Method:</b>	Minimum Curvature
<b>Well Error:</b>	0.0ft	<b>Output errors are at</b>	2.00 sigma
<b>Reference Wellbore</b>	DD	<b>Database:</b>	EDM 5000.1 US Multi Users DB
<b>Reference Design:</b>	Plan #2	<b>Offset TVD Reference:</b>	Offset Datum

Offset Design													O04 696 (3rd) - NP MF11G-3 O04 696 (was 14C-3) - DD - Plan #2		Offset Site Error:		0.0 ft
Survey Program: 0-MWD													Offset Well Error:		0.0 ft		
Reference		Offset		Semi Major Axis			Distance							Warning			
Measured Depth (ft)	Vertical Depth (ft)	Measured Depth (ft)	Vertical Depth (ft)	Reference (ft)	Offset (ft)	Highside Toolface (°)	Offset Wellbore Centre +N/-S (ft) +E/-W (ft)		Between Centres (ft)	Between Ellipses (ft)	Total Uncertainty Axis	Separation Factor					
0.0	0.0	0.0	0.0	0.0	0.0	-142.25	-44.5	-34.5	56.3								
100.0	100.0	100.0	100.0	0.1	0.1	-142.25	-44.5	-34.5	56.3	56.0	0.27	206.780					
200.0	200.0	200.0	200.0	0.3	0.3	-142.25	-44.5	-34.5	56.3	55.7	0.62	90.612 CC, ES					
300.0	300.0	300.0	300.0	0.5	0.5	179.60	-44.5	-34.5	58.9	57.9	0.97	60.769					
400.0	399.6	402.4	402.3	0.7	0.7	178.15	-43.9	-31.8	64.7	63.4	1.32	48.892					
500.0	498.8	504.7	504.4	1.0	0.9	174.28	-41.9	-23.8	71.7	70.0	1.69	42.365					
600.0	597.1	606.9	605.6	1.4	1.2	168.86	-38.5	-10.6	80.5	78.4	2.12	38.071					
700.0	694.3	708.7	705.6	1.8	1.5	162.68	-33.9	7.8	91.8	89.1	2.65	34.591 SF					

## Anticollision Report

<b>Company:</b>	EnCana Oil & Gas (USA) Inc	<b>Local Co-ordinate Reference:</b>	Well NP MF06B-3 O04 696 (was 15A-4)
<b>Project:</b>	North Piceance	<b>TVD Reference:</b>	WELL @ 6044.0ft (Original Well Elev)
<b>Reference Site:</b>	O04 696 (3rd)	<b>MD Reference:</b>	WELL @ 6044.0ft (Original Well Elev)
<b>Site Error:</b>	0.0ft	<b>North Reference:</b>	True
<b>Reference Well:</b>	NP MF06B-3 O04 696 (was 15A-4)	<b>Survey Calculation Method:</b>	Minimum Curvature
<b>Well Error:</b>	0.0ft	<b>Output errors are at</b>	2.00 sigma
<b>Reference Wellbore</b>	DD	<b>Database:</b>	EDM 5000.1 US Multi Users DB
<b>Reference Design:</b>	Plan #2	<b>Offset TVD Reference:</b>	Offset Datum

Offset Design													O04 696 (3rd) - NP MF14A-3 O04 696 (was 13B-3) - DD - Plan #2		Offset Site Error:		0.0 ft
Survey Program: 0-MWD													Offset Well Error:		0.0 ft		
Reference		Offset		Semi Major Axis			Distance							Warning			
Measured Depth (ft)	Vertical Depth (ft)	Measured Depth (ft)	Vertical Depth (ft)	Reference (ft)	Offset (ft)	Highside Toolface (°)	Offset Wellbore Centre +N/-S (ft)	+E/-W (ft)	Between Centres (ft)	Between Ellipses (ft)	Total Uncertainty Axis	Separation Factor					
0.0	0.0	0.0	0.0	0.0	0.0	-151.63	-43.5	-23.5	49.4								
100.0	100.0	100.0	100.0	0.1	0.1	-151.63	-43.5	-23.5	49.4	49.2	0.27	181.611					
200.0	200.0	200.0	200.0	0.3	0.3	-151.63	-43.5	-23.5	49.4	48.8	0.62	79.582	CC, ES				
300.0	300.0	301.6	301.5	0.5	0.5	168.31	-43.1	-20.8	50.4	49.4	0.98	51.499					
400.0	399.6	402.9	402.6	0.7	0.7	163.03	-41.7	-12.9	53.6	52.2	1.37	39.146					
500.0	498.8	503.9	502.6	1.0	1.0	155.63	-39.4	0.3	59.8	57.9	1.84	32.412					
600.0	597.1	604.1	601.1	1.4	1.4	147.67	-36.3	18.5	69.6	67.2	2.46	28.259					
700.0	694.3	703.6	697.8	1.8	1.8	140.34	-32.4	41.6	83.6	80.4	3.27	25.577	SF				

## Anticollision Report

<b>Company:</b>	EnCana Oil & Gas (USA) Inc	<b>Local Co-ordinate Reference:</b>	Well NP MF06B-3 O04 696 (was 15A-4)
<b>Project:</b>	North Piceance	<b>TVD Reference:</b>	WELL @ 6044.0ft (Original Well Elev)
<b>Reference Site:</b>	O04 696 (3rd)	<b>MD Reference:</b>	WELL @ 6044.0ft (Original Well Elev)
<b>Site Error:</b>	0.0ft	<b>North Reference:</b>	True
<b>Reference Well:</b>	NP MF06B-3 O04 696 (was 15A-4)	<b>Survey Calculation Method:</b>	Minimum Curvature
<b>Well Error:</b>	0.0ft	<b>Output errors are at</b>	2.00 sigma
<b>Reference Wellbore</b>	DD	<b>Database:</b>	EDM 5000.1 US Multi Users DB
<b>Reference Design:</b>	Plan #2	<b>Offset TVD Reference:</b>	Offset Datum

Offset Design													004 696 (3rd) - NP MF14C-3 004 696 (was 14D-3) - DD - Plan #2		Offset Site Error:		0.0 ft	
Survey Program: 0-MWD													Offset Well Error:		0.0 ft			
Reference		Offset		Semi Major Axis			Distance							Warning				
Measured Depth	Vertical Depth	Measured Depth	Vertical Depth	Reference	Offset	Highside Toolface	Offset Wellbore Centre		Between Centres	Between Ellipses	Total Uncertainty Axis	Separation Factor						
(ft)	(ft)	(ft)	(ft)	(ft)	(ft)	(°)	+N/-S (ft)	+E/-W (ft)	(ft)	(ft)								
0.0	0.0	0.0	0.0	0.0	0.0	-150.37	-49.6	-28.2	57.0									
100.0	100.0	100.0	100.0	0.1	0.1	-150.37	-49.6	-28.2	57.0	56.8	0.27	209.482						
200.0	200.0	200.0	200.0	0.3	0.3	-150.37	-49.6	-28.2	57.0	56.4	0.62	91.796	CC, ES					
300.0	300.0	301.5	301.4	0.5	0.5	169.57	-49.5	-25.5	58.3	57.3	0.98	59.509						
400.0	399.6	402.7	402.3	0.7	0.7	164.38	-49.4	-17.5	62.4	61.1	1.37	45.447						
500.0	498.8	503.2	502.0	1.0	1.0	157.21	-49.1	-4.2	70.2	68.4	1.85	37.962						
600.0	597.1	602.9	599.9	1.4	1.4	149.62	-48.8	14.1	82.5	80.0	2.46	33.529						
700.0	694.3	701.3	695.6	1.8	1.8	142.73	-48.4	37.2	99.6	96.4	3.24	30.778	SF					

## Anticollision Report

<b>Company:</b>	EnCana Oil & Gas (USA) Inc	<b>Local Co-ordinate Reference:</b>	Well NP MF06B-3 O04 696 (was 15A-4)
<b>Project:</b>	North Piceance	<b>TVD Reference:</b>	WELL @ 6044.0ft (Original Well Elev)
<b>Reference Site:</b>	O04 696 (3rd)	<b>MD Reference:</b>	WELL @ 6044.0ft (Original Well Elev)
<b>Site Error:</b>	0.0ft	<b>North Reference:</b>	True
<b>Reference Well:</b>	NP MF06B-3 O04 696 (was 15A-4)	<b>Survey Calculation Method:</b>	Minimum Curvature
<b>Well Error:</b>	0.0ft	<b>Output errors are at</b>	2.00 sigma
<b>Reference Wellbore</b>	DD	<b>Database:</b>	EDM 5000.1 US Multi Users DB
<b>Reference Design:</b>	Plan #2	<b>Offset TVD Reference:</b>	Offset Datum

<b>Offset Design</b> O04 696 (3rd) - NP MF14D-3 O04 696 (was 19A-3) - DD - Plan #2													Offset Site Error:	0.0 ft
Survey Program: 0-MWD													Offset Well Error:	0.0 ft
Reference		Offset		Semi Major Axis			Distance							
Measured Depth (ft)	Vertical Depth (ft)	Measured Depth (ft)	Vertical Depth (ft)	Reference (ft)	Offset (ft)	Highside Toolface (°)	Offset Wellbore Centre +N/-S (ft)	+E/-W (ft)	Between Centres (ft)	Between Ellipses (ft)	Total Uncertainty Axis	Separation Factor	Warning	
0.0	0.0	0.0	0.0	0.0	0.0	-141.79	-59.7	-47.0	76.0					
100.0	100.0	100.0	100.0	0.1	0.1	-141.79	-59.7	-47.0	76.0	75.7	0.27	279.044		
200.0	200.0	200.0	200.0	0.3	0.3	-141.79	-59.7	-47.0	76.0	75.4	0.62	122.278 CC, ES		
300.0	300.0	300.0	300.0	0.5	0.5	-179.95	-59.7	-47.0	78.6	77.6	0.97	81.062		
400.0	399.6	402.1	402.0	0.7	0.7	178.51	-59.9	-44.3	85.0	83.7	1.32	64.175		
500.0	498.8	503.9	503.5	1.0	0.9	174.47	-60.6	-36.2	94.1	92.4	1.70	55.179 SF		

## Anticollision Report

<b>Company:</b>	EnCana Oil & Gas (USA) Inc	<b>Local Co-ordinate Reference:</b>	Well NP MF06B-3 O04 696 (was 15A-4)
<b>Project:</b>	North Piceance	<b>TVD Reference:</b>	WELL @ 6044.0ft (Original Well Elev)
<b>Reference Site:</b>	O04 696 (3rd)	<b>MD Reference:</b>	WELL @ 6044.0ft (Original Well Elev)
<b>Site Error:</b>	0.0ft	<b>North Reference:</b>	True
<b>Reference Well:</b>	NP MF06B-3 O04 696 (was 15A-4)	<b>Survey Calculation Method:</b>	Minimum Curvature
<b>Well Error:</b>	0.0ft	<b>Output errors are at</b>	2.00 sigma
<b>Reference Wellbore</b>	DD	<b>Database:</b>	EDM 5000.1 US Multi Users DB
<b>Reference Design:</b>	Plan #2	<b>Offset TVD Reference:</b>	Offset Datum

<b>Offset Design</b> O04 696 (3rd) - NP MF14E-3 O04 696 (was 19B-3) - DD - Plan #2													<b>Offset Site Error:</b>	0.0 ft
Survey Program: 0-MWD													<b>Offset Well Error:</b>	0.0 ft
Reference		Offset		Semi Major Axis			Distance						Warning	
Measured Depth (ft)	Vertical Depth (ft)	Measured Depth (ft)	Vertical Depth (ft)	Reference (ft)	Offset (ft)	Highside Toolface (°)	Offset Wellbore Centre +N/-S (ft)	+E/-W (ft)	Between Centres (ft)	Between Ellipses (ft)	Total Uncertainty Axis	Separation Factor		
0.0	0.0	0.0	0.0	0.0	0.0	-147.83	-64.8	-40.7	76.5					
100.0	100.0	100.0	100.0	0.1	0.1	-147.83	-64.8	-40.7	76.5	76.2	0.27	280.968		
200.0	200.0	200.0	200.0	0.3	0.3	-147.83	-64.8	-40.7	76.5	75.9	0.62	123.121 CC, ES		
300.0	300.0	301.1	301.0	0.5	0.5	172.33	-65.5	-38.1	78.4	77.4	0.98	79.954		
400.0	399.6	401.7	401.3	0.7	0.7	167.78	-67.5	-30.5	84.3	82.9	1.38	61.272		
500.0	498.8	501.3	500.0	1.0	1.0	161.56	-71.0	-17.8	95.1	93.3	1.84	51.593 SF		

## Anticollision Report

<b>Company:</b>	EnCana Oil & Gas (USA) Inc	<b>Local Co-ordinate Reference:</b>	Well NP MF06B-3 O04 696 (was 15A-4)
<b>Project:</b>	North Piceance	<b>TVD Reference:</b>	WELL @ 6044.0ft (Original Well Elev)
<b>Reference Site:</b>	O04 696 (3rd)	<b>MD Reference:</b>	WELL @ 6044.0ft (Original Well Elev)
<b>Site Error:</b>	0.0ft	<b>North Reference:</b>	True
<b>Reference Well:</b>	NP MF06B-3 O04 696 (was 15A-4)	<b>Survey Calculation Method:</b>	Minimum Curvature
<b>Well Error:</b>	0.0ft	<b>Output errors are at</b>	2.00 sigma
<b>Reference Wellbore</b>	DD	<b>Database:</b>	EDM 5000.1 US Multi Users DB
<b>Reference Design:</b>	Plan #2	<b>Offset TVD Reference:</b>	Offset Datum

Offset Design													Offset Site Error:		0.0 ft
Survey Program: 0-MWD													Offset Well Error:		0.0 ft
Reference		Offset		Semi Major Axis			Distance							Warning	
Measured Depth Depth (ft)	Vertical Depth (ft)	Measured Depth (ft)	Vertical Depth (ft)	Reference (ft)	Offset (ft)	Highside Toolface (°)	Offset Wellbore +N/-S (ft)	Centre +E/-W (ft)	Between Centres (ft)	Between Ellipses (ft)	Total Uncertainty Axis	Separation Factor			
0.0	0.0	0.0	0.0	0.0	0.0	-142.25	-22.3	-17.2	28.2						
100.0	100.0	100.0	100.0	0.1	0.1	-142.25	-22.3	-17.2	28.2	27.9	0.27	103.390	CC		
200.0	200.0	200.0	200.0	0.3	0.3	-142.25	-22.3	-17.2	28.2	27.5	0.62	45.306	ES		
300.0	300.0	300.8	300.8	0.5	0.5	-176.17	-19.7	-18.0	29.3	28.3	0.98	29.965			
400.0	399.6	401.3	400.9	0.7	0.7	-165.45	-12.1	-20.2	33.5	32.2	1.37	24.459			
500.0	498.8	501.1	499.8	1.0	1.0	-153.12	0.5	-23.8	42.4	40.5	1.86	22.796			
600.0	597.1	599.8	596.9	1.4	1.4	-142.91	17.8	-28.8	56.6	54.2	2.49	22.761	SF		
700.0	694.3	697.5	692.0	1.8	1.8	-135.93	39.2	-35.0	76.2	73.0	3.24	23.530			
800.0	790.2	794.6	786.4	2.4	2.2	-133.38	61.1	-41.4	100.0	95.9	4.04	24.721			



## Anticollision Report

<b>Company:</b>	EnCana Oil & Gas (USA) Inc	<b>Local Co-ordinate Reference:</b>	Well NP MF06B-3 O04 696 (was 15A-4)
<b>Project:</b>	North Piceance	<b>TVD Reference:</b>	WELL @ 6044.0ft (Original Well Elev)
<b>Reference Site:</b>	O04 696 (3rd)	<b>MD Reference:</b>	WELL @ 6044.0ft (Original Well Elev)
<b>Site Error:</b>	0.0ft	<b>North Reference:</b>	True
<b>Reference Well:</b>	NP MF06B-3 O04 696 (was 15A-4)	<b>Survey Calculation Method:</b>	Minimum Curvature
<b>Well Error:</b>	0.0ft	<b>Output errors are at</b>	2.00 sigma
<b>Reference Wellbore</b>	DD	<b>Database:</b>	EDM 5000.1 US Multi Users DB
<b>Reference Design:</b>	Plan #2	<b>Offset TVD Reference:</b>	Offset Datum

Offset Design													Offset Site Error:		0.0 ft
Survey Program: 0-MWD													Offset Well Error:		0.0 ft
Reference		Offset		Semi Major Axis			Distance							Warning	
Measured Depth	Vertical Depth	Measured Depth	Vertical Depth	Reference	Offset	Highside Toolface	Offset Wellbore Centre	Between Centres	Between Ellipses	Total Uncertainty Axis	Separation Factor				
(ft)	(ft)	(ft)	(ft)	(ft)	(ft)	(°)	+N/-S (ft)	+E/-W (ft)	(ft)	(ft)					
0.0	0.0	0.0	0.0	0.0	0.0	-142.25	-66.8	-51.7	84.5						
100.0	100.0	100.0	100.0	0.1	0.1	-142.25	-66.8	-51.7	84.5	84.2	0.27	310.171			
200.0	200.0	200.0	200.0	0.3	0.3	-142.25	-66.8	-51.7	84.5	83.8	0.62	135.918	CC, ES		
300.0	300.0	300.5	300.5	0.5	0.5	179.17	-67.0	-51.1	86.9	85.9	0.97	89.484			
400.0	399.6	401.3	401.1	0.7	0.7	176.07	-69.1	-46.2	93.6	92.2	1.34	69.966	SF		

## Anticollision Report

<b>Company:</b>	EnCana Oil & Gas (USA) Inc	<b>Local Co-ordinate Reference:</b>	Well NP MF06B-3 O04 696 (was 15A-4)
<b>Project:</b>	North Piceance	<b>TVD Reference:</b>	WELL @ 6044.0ft (Original Well Elev)
<b>Reference Site:</b>	O04 696 (3rd)	<b>MD Reference:</b>	WELL @ 6044.0ft (Original Well Elev)
<b>Site Error:</b>	0.0ft	<b>North Reference:</b>	True
<b>Reference Well:</b>	NP MF06B-3 O04 696 (was 15A-4)	<b>Survey Calculation Method:</b>	Minimum Curvature
<b>Well Error:</b>	0.0ft	<b>Output errors are at</b>	2.00 sigma
<b>Reference Wellbore</b>	DD	<b>Database:</b>	EDM 5000.1 US Multi Users DB
<b>Reference Design:</b>	Plan #2	<b>Offset TVD Reference:</b>	Offset Datum

Offset Design												Offset Site Error:		0.0 ft
Survey Program: 0-MWD												Offset Well Error:		0.0 ft
Reference		Offset		Semi Major Axis			Distance						Warning	
Measured Depth Depth (ft)	Vertical Depth (ft)	Measured Depth (ft)	Vertical Depth (ft)	Reference (ft)	Offset (ft)	Highside Toolface (°)	Offset Wellbore Centre +N/-S (ft)	+E/-W (ft)	Between Centres (ft)	Between Ellipses (ft)	Total Uncertainty Axis	Separation Factor		
0.0	0.0	0.0	0.0	0.0	0.0	-147.69	-71.8	-45.4	85.0					
100.0	100.0	100.0	100.0	0.1	0.1	-147.69	-71.8	-45.4	85.0	84.7	0.27	312.178		
200.0	200.0	200.0	200.0	0.3	0.3	-147.69	-71.8	-45.4	85.0	84.4	0.62	136.797 CC, ES		
300.0	300.0	300.0	300.0	0.5	0.5	172.60	-73.2	-43.2	87.5	86.6	0.98	89.482		
400.0	399.6	399.4	399.0	0.7	0.7	168.48	-77.1	-36.5	95.5	94.1	1.37	69.679 SF		

# Anticollision Report

<b>Company:</b>	EnCana Oil & Gas (USA) Inc	<b>Local Co-ordinate Reference:</b>	Well NP MF06B-3 O04 696 (was 15A-4)
<b>Project:</b>	North Piceance	<b>TVD Reference:</b>	WELL @ 6044.0ft (Original Well Elev)
<b>Reference Site:</b>	O04 696 (3rd)	<b>MD Reference:</b>	WELL @ 6044.0ft (Original Well Elev)
<b>Site Error:</b>	0.0ft	<b>North Reference:</b>	True
<b>Reference Well:</b>	NP MF06B-3 O04 696 (was 15A-4)	<b>Survey Calculation Method:</b>	Minimum Curvature
<b>Well Error:</b>	0.0ft	<b>Output errors are at</b>	2.00 sigma
<b>Reference Wellbore</b>	DD	<b>Database:</b>	EDM 5000.1 US Multi Users DB
<b>Reference Design:</b>	Plan #2	<b>Offset TVD Reference:</b>	Offset Datum

Reference Depths are relative to WELL @ 6044.0ft (Original Well Elev)

Offset Depths are relative to Offset Datum

Central Meridian is 105° 30' 0.00 W °

Coordinates are relative to: NP MF06B-3 O04 696 (was 15A-4)

Coordinate System is US State Plane 1983, Colorado Central Zone

Grid Convergence at Surface is: -1.64°

