

T5N, R91W, 6th P.M.

SWEPI LP

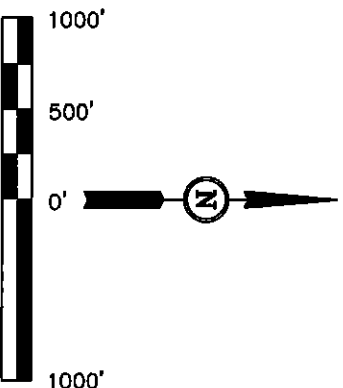
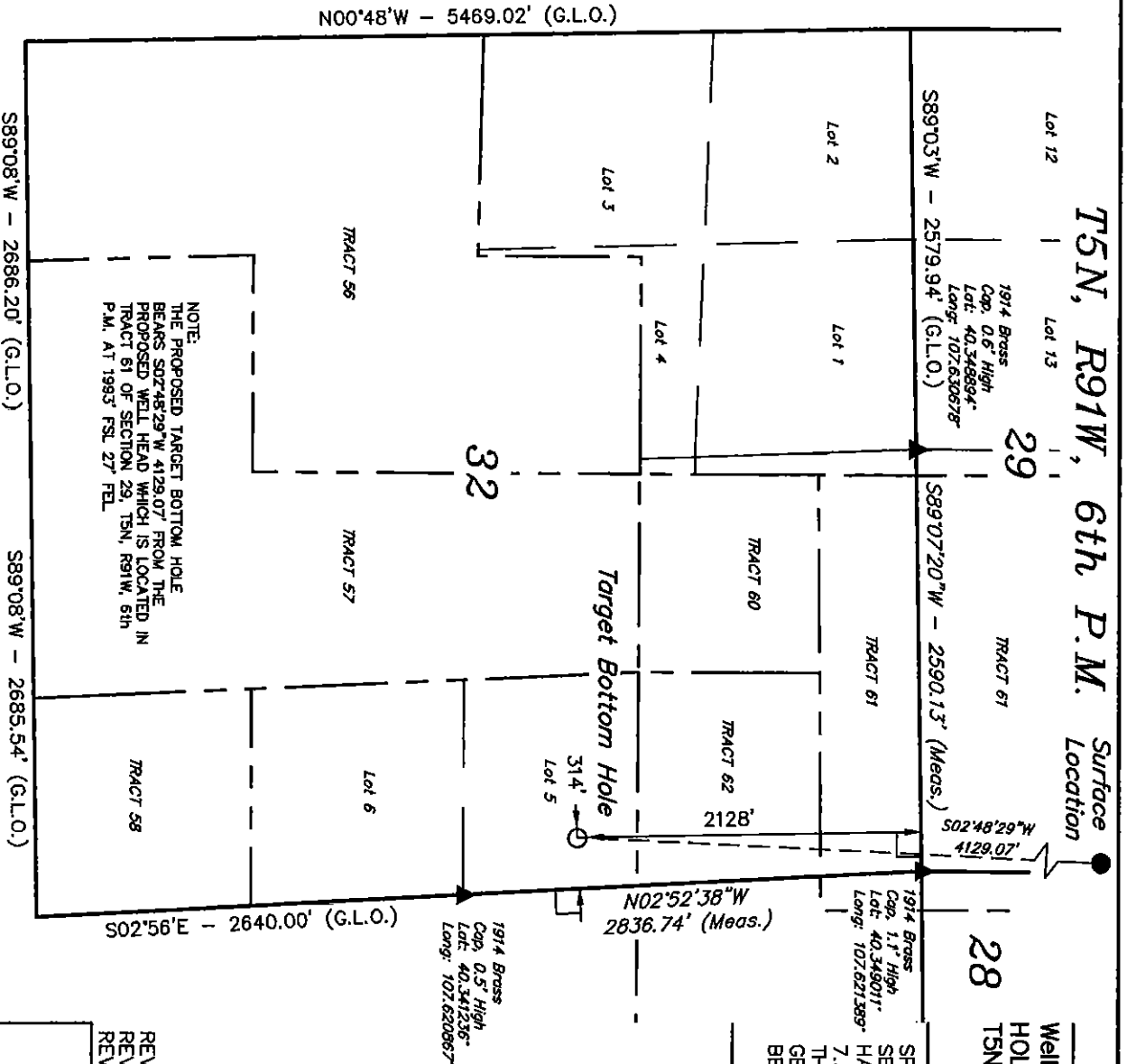
Well location, HAMILTON #2-29 (TARGET BOTTOM HOLE), located as shown in LOT 5 of Section 32, T5N, R91W, 6th P.M., Moffat County, Colorado.

BASIS OF ELEVATION

SPOT ELEVATION AT THE NORTHEAST CORNER OF SECTION 31, T5N, R90W, 6th P.M. TAKEN FROM THE HAMILTON QUADRANGLE, COLORADO, MOFFAT COUNTY, 7.5 MINUTE QUAD (TOPOGRAPHIC MAP) PUBLISHED BY THE UNITED STATES DEPARTMENT OF THE INTERIOR, GEOLOGICAL SURVEY. SAID ELEVATION IS MARKED AS BEING 6664 FEET.

BASIS OF BEARINGS

BASIS OF BEARINGS IS A G.P.S. OBSERVATION.



CERTIFICATE

THIS IS TO CERTIFY THAT THE ABOVE PLATS, BEARINGS, DISTANCES, FIELD NOTES OF ACTUAL SURVEYS MADE BY ME OR UNDER MY SUPERVISION AND THAT THE SAME ARE TRUE AND CORRECT TO THE BEST OF MY KNOWLEDGE AND BELIEF.

REVISED: 07-17-13 M.D.
REVISED: 07-03-13 M.D.
REVISED: 01-22-13

REGISTERED LAND SURVEYOR
STATE OF COLORADO
09-17-13

UNITAH ENGINEERING & LAND SURVEYING
85 SOUTH 200 EAST - VERNAL, UTAH 84078
(435) 789-1017

LEGEND:

- = 90° SYMBOL
- = PROPOSED WELL HEAD.
- ▲ = SECTION CORNERS LOCATED.

NAD 83 (TARGET BOTTOM HOLE)	
LATITUDE = 40°20'35.38" (40.343161)	
LONGITUDE = 107°37'19.65" (107.622125)	
NAD 27 (TARGET BOTTOM HOLE)	
LATITUDE = 40°20'35.48" (40.343189)	
LONGITUDE = 107°37'17.41" (107.621503)	

SCALE	1" = 1000'	DATE SURVEYED:	06-01-12	DATE DRAWN:	06-07-12
PARTY	G.M. M.M. J.M.H.	REFERENCES	G.L.O. PLAT		
WEATHER	WARM	FILE	SWEPI LP		