



CEMENT BOND LOG & V.D. GAMMA-RAY & C.C.L.

Pioneer Energy Services

Company ENCANA OIL & GAS
Well ARISTOCRAT ANGUS 3-3
Field WATTENBERG
County WELD
State COLORADO

Company ENCANA OIL & GAS
Well ARISTOCRAT ANGUS 3-3
Field WATTENBERG
County WELD
State COLORADO

Location: API #: 0512334332000000
Permanent Datum GL
Log Measured From GL
Drilling Measured From KB
Elevation 4806'
Other Services NONE
Elevation K.B. NA
D.F. NA
G.L. 4806'

Date	5-31-13
Run Number	1
Depth Driller	7458'
Depth Logger	7416'
Bottom Logged Interval	7404'
Top Log Interval	2880'
Open Hole Size	7 7/8"
Type Fluid	WATER
Density / Viscosity	
Max. Recorded Temp.	264
Estimated Cement Top	3196'
Time Well Ready	ROA
Time Logger on Bottom	AM
Equipment Number	24
Location	FT. MORGAN
Recorded By	JOHN HOLLIS
Witnessed By	TOM MAJORS
Borehole Record	
Run Number	Bit
	From
	To
	Size
	Weight
	From
	To
	Size
	Wgt/Ft
	Top
	Bottom
Casing Record	Size
Surface String	
Prot. String	
Production String	4.5"
Liner	11.6#

<<< Fold Here >>>

All interpretations are opinions based on inferences from electrical or other measurements and we cannot and do not guarantee the accuracy or correctness of any interpretation, and we shall not, except in the case of gross or willful negligence on our part, be liable or responsible for any loss, costs, damages, or expenses incurred or sustained by anyone resulting from any interpretation made by any of our officers, agents or employees. These interpretations are also subject to our general terms and conditions set out in our current Price Schedule.

Comments

S.O. 2-203948
NO OPEN-HOLE LOG
E
N X O S
W

WCR 38 & WCR 39 EAST 1.7 SOUTH 1 MILE EAST 3/4 INTO

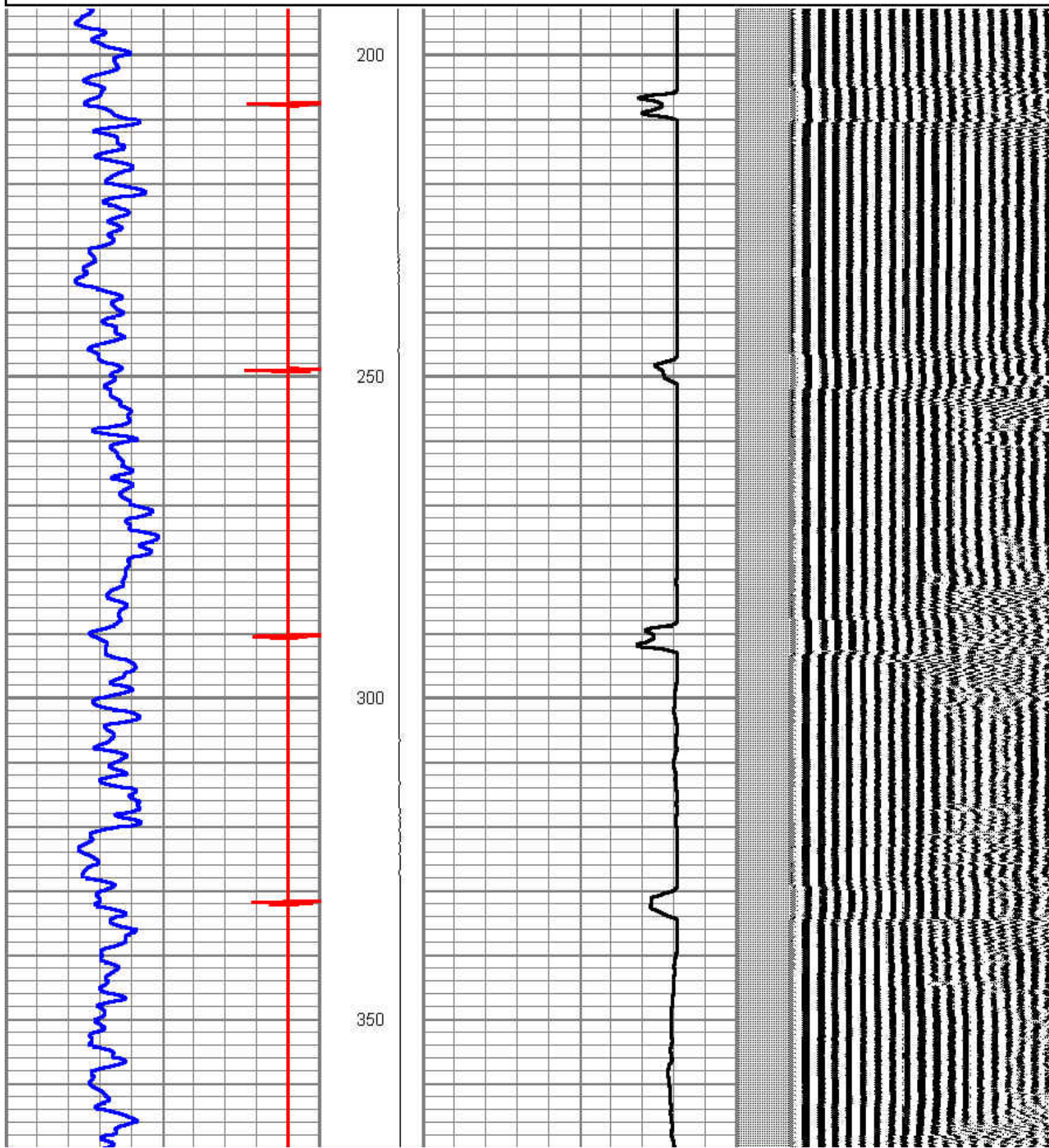
THANK YOU FOR USING PIONEER ENERGY SERVICES

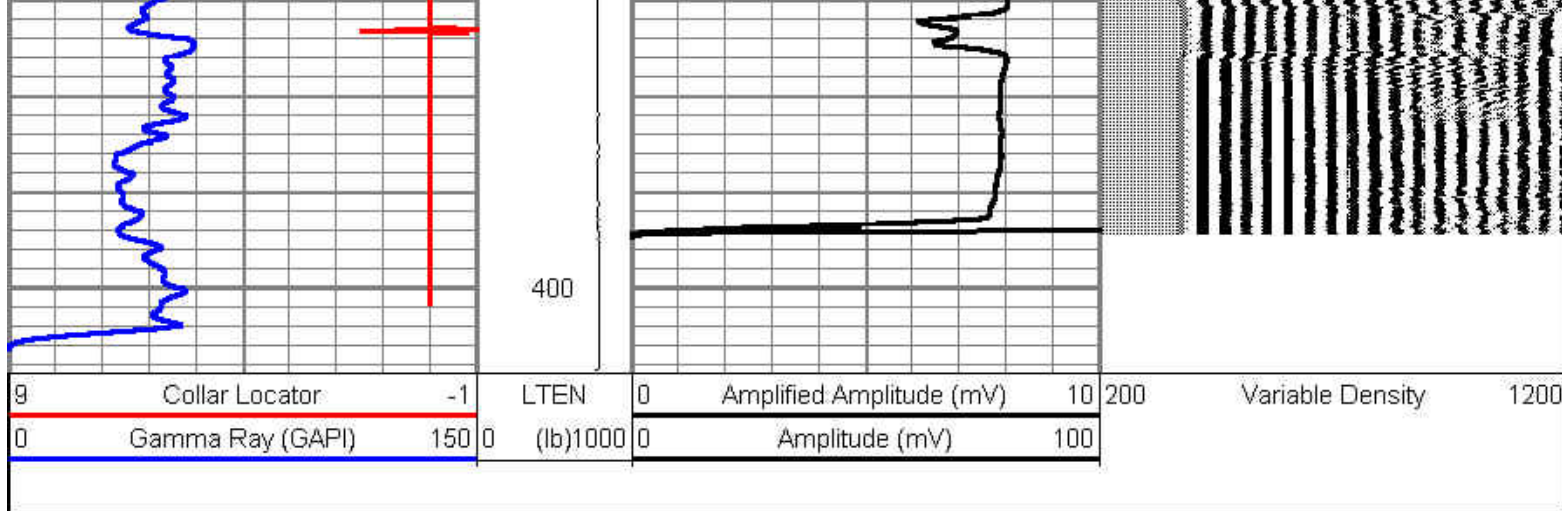
Sensor	Offset (ft)	Schematic	Description	Len (ft)	OD (in)	Wt (lb)
			SDSCHD Cable Head for Testing	1.00	1.44	1.00

			cent.-Probe (cent) probe cent.	2.88	2.75	25.00
			cent.-Probe (cent) probe cent.	2.88	2.75	25.00
WVF3	15.35		CBL-Probe (110215) 2.75 digital probe	8.75	2.75	106.50
WVF5	14.35					
			cent.-Probe (cent) probe cent.	2.88	2.75	25.00
CCL	7.00		CCL-Probe (081119)	2.02	2.75	
GR	3.67		GR-Probe275dig (110249) Probe Digital Gamma-Ray	3.33	2.75	57.00
			cent.-Probe (cent) probe cent.	2.88	2.75	25.00
Dataset: aristocrat angus 3-3 enc.db; field/well/run1/pass5 Total Length: 26.60 ft Total Weight: 264.50 lb O.D.: 2.75 in						

Database File: aristocrat angus 3-3 enc.db
 Dataset Pathname: pass2
 Presentation Format: cbl_dr
 Dataset Creation: Fri May 31 11:04:06 2013 by Log SCH 120430
 Charted by: Depth in Feet scaled 1:240

9	Collar Locator	-1	LTEN	0	Amplified Amplitude (mV)	10	200	Variable Density	1200
0	Gamma Ray (GAPI)	150	0	(lb)1000	0	Amplitude (mV)	100		



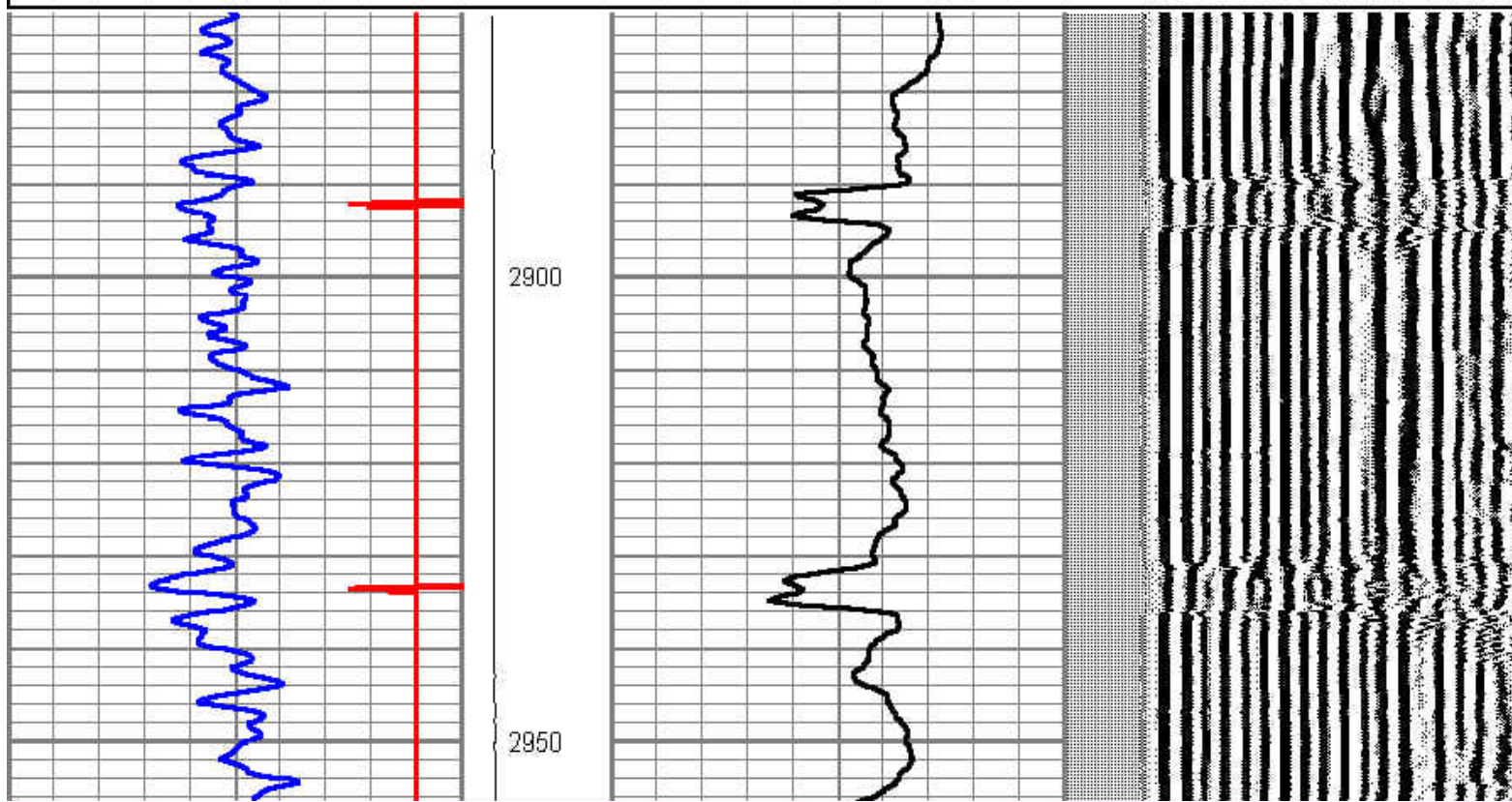
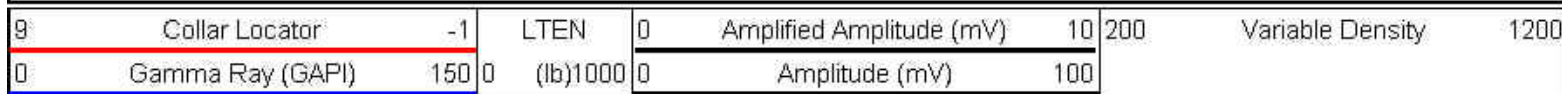


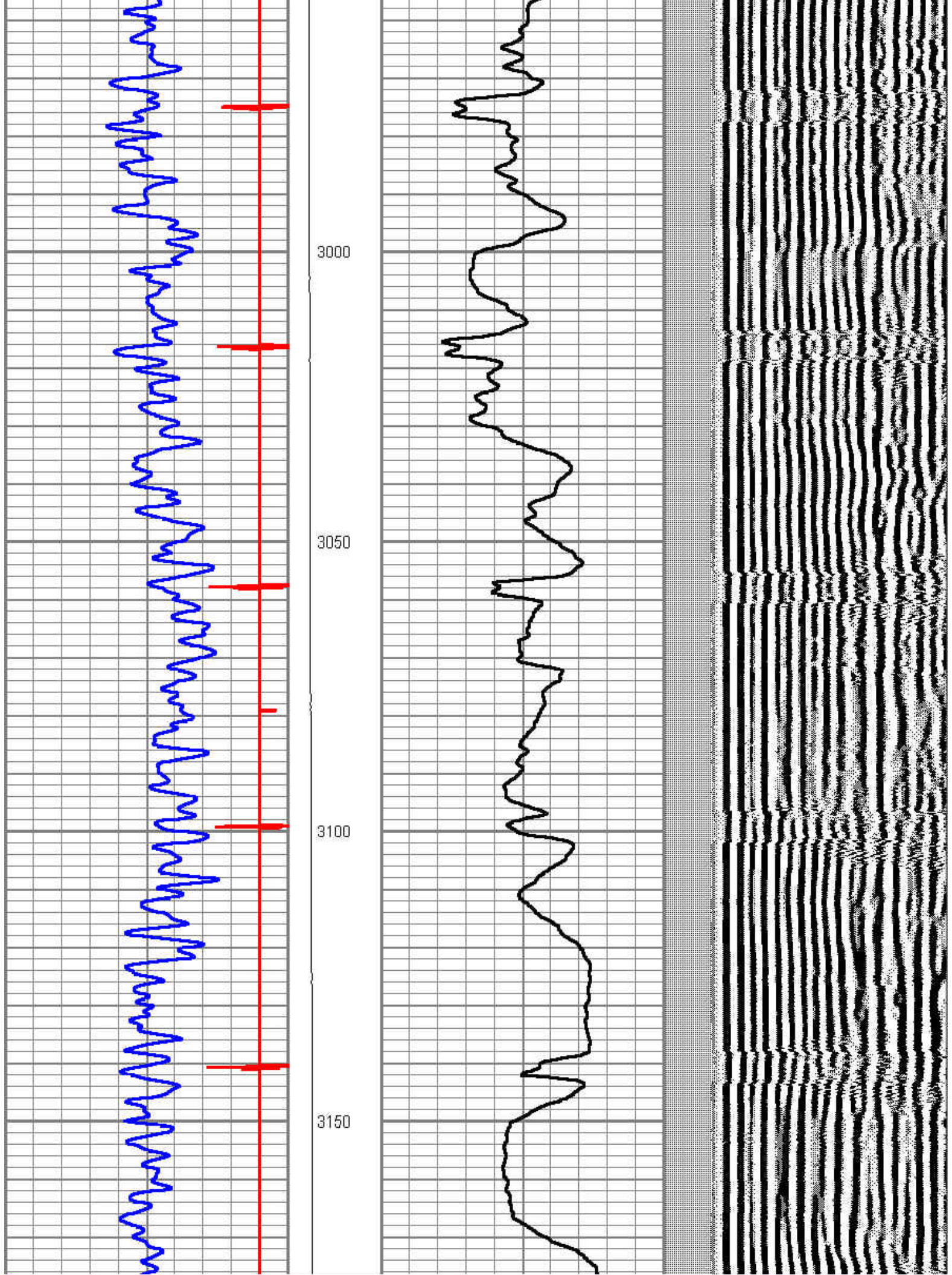
FREE PIPE PASS

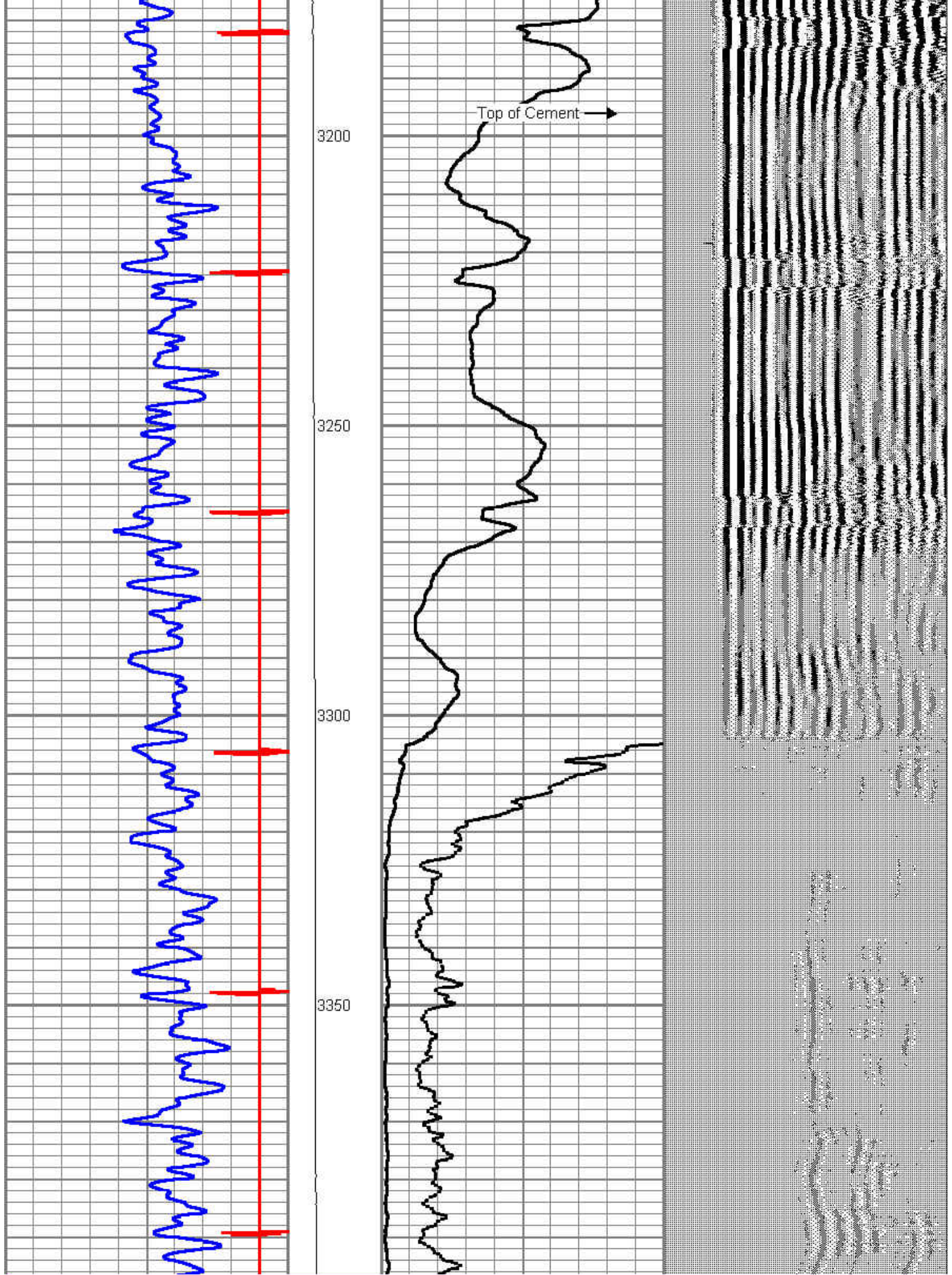


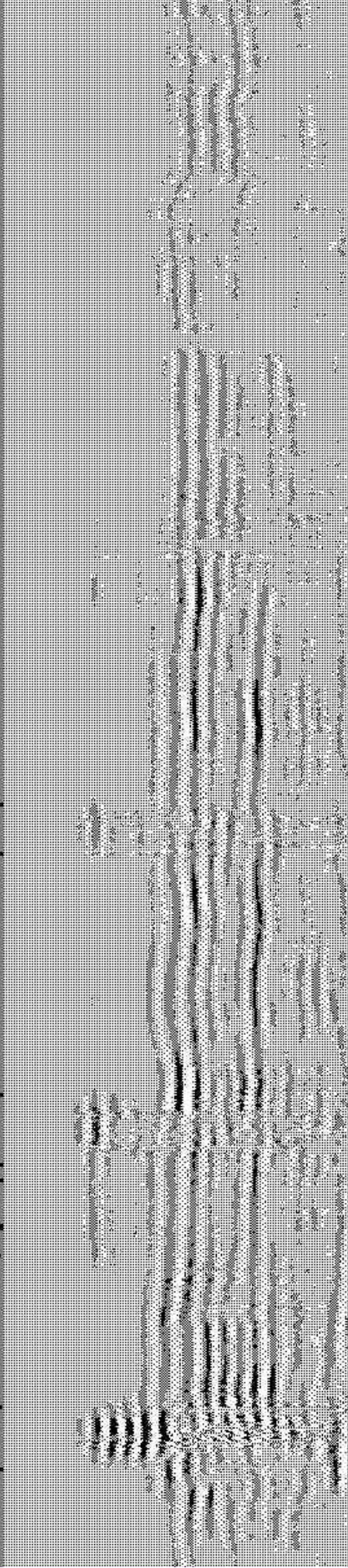
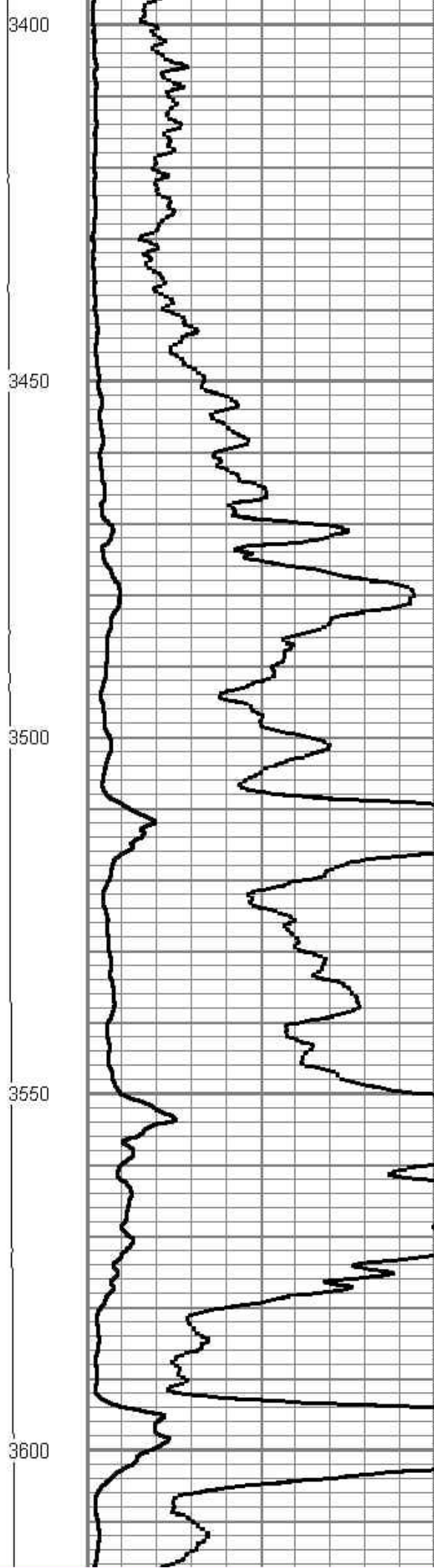
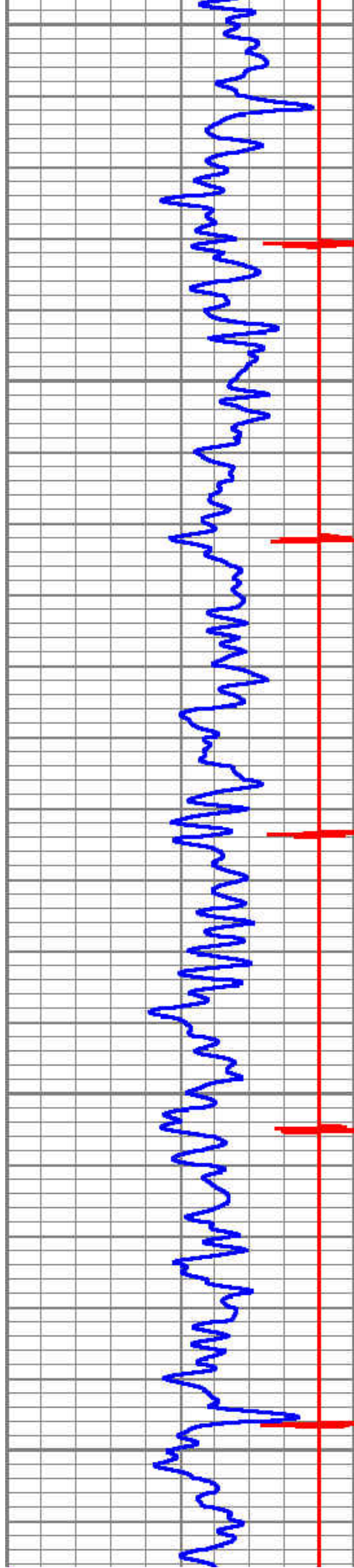
MAIN PASS

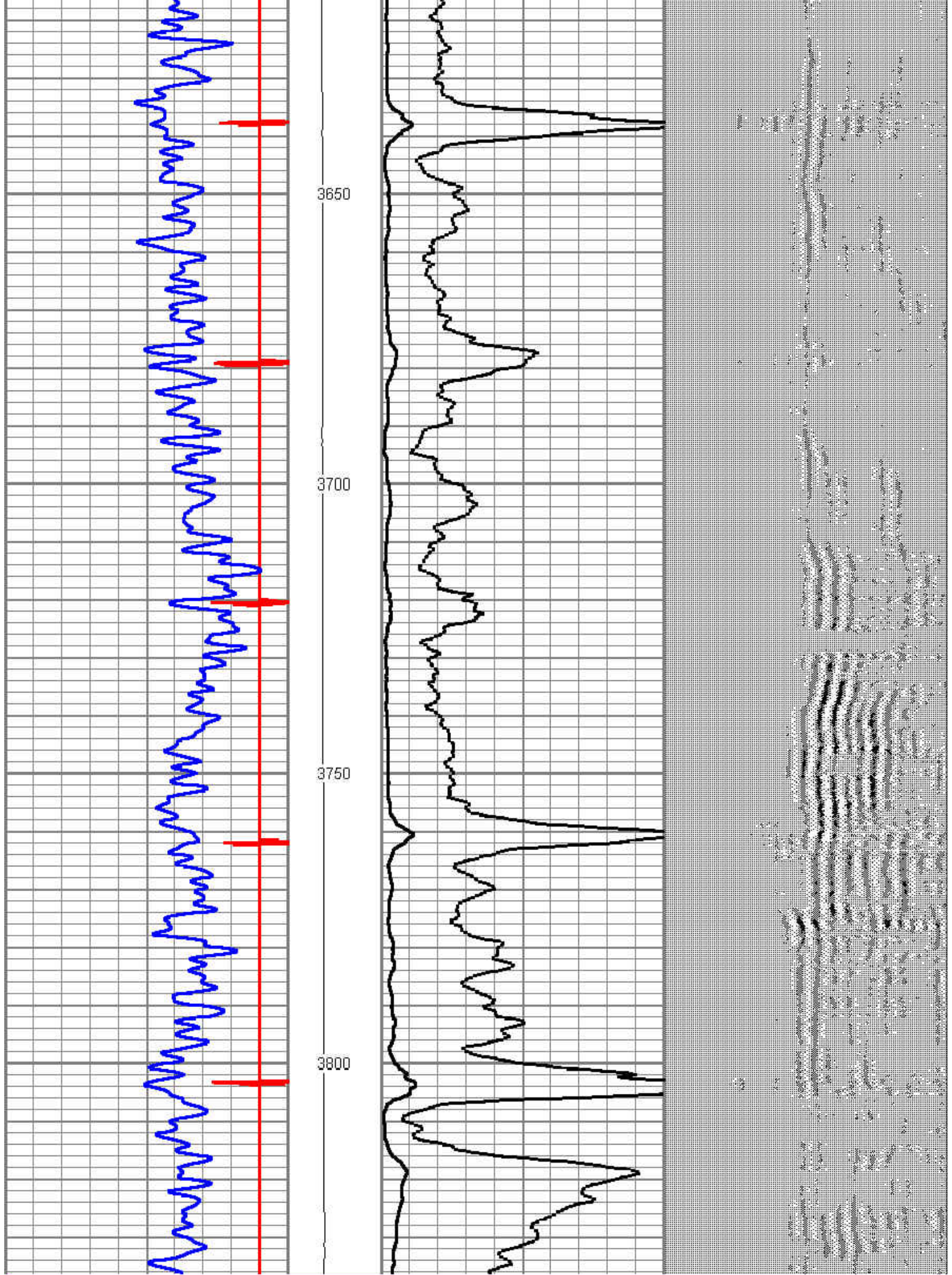
Database File: aristocrat angus 3-3 enc.db
 Dataset Pathname: pass5
 Presentation Format: cbl_dr
 Dataset Creation: Fri May 31 11:34:13 2013 by Log SCH 120430
 Charted by: Depth in Feet scaled 1:240

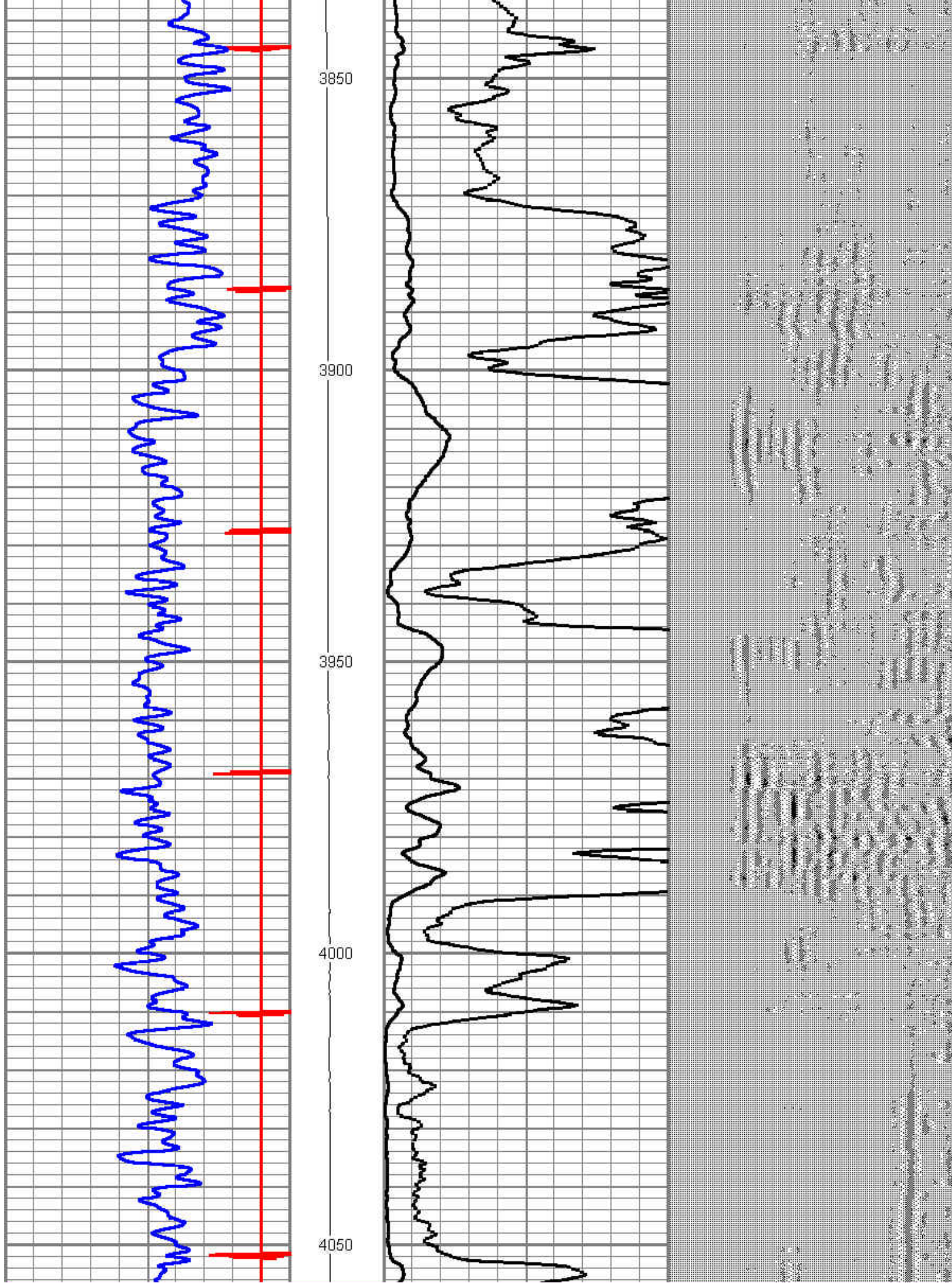


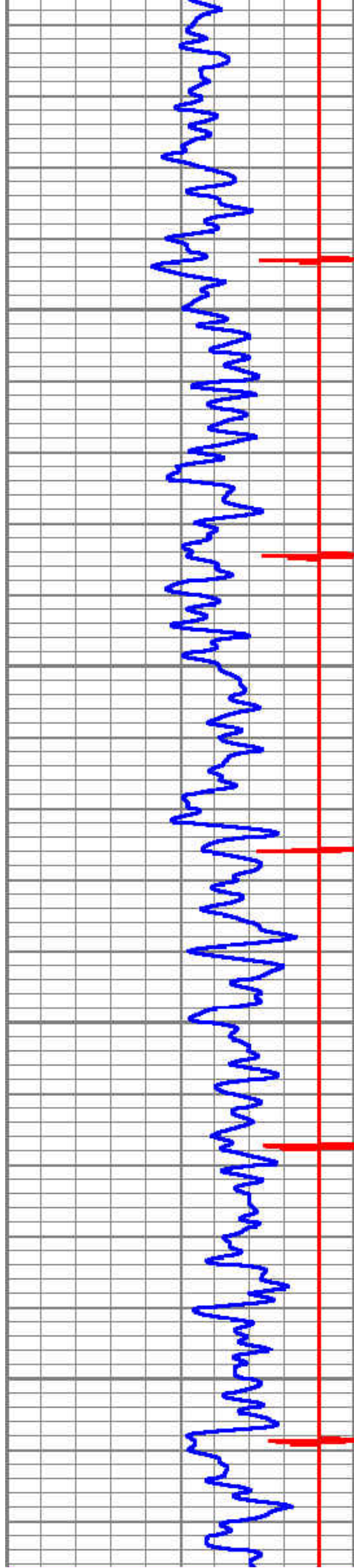










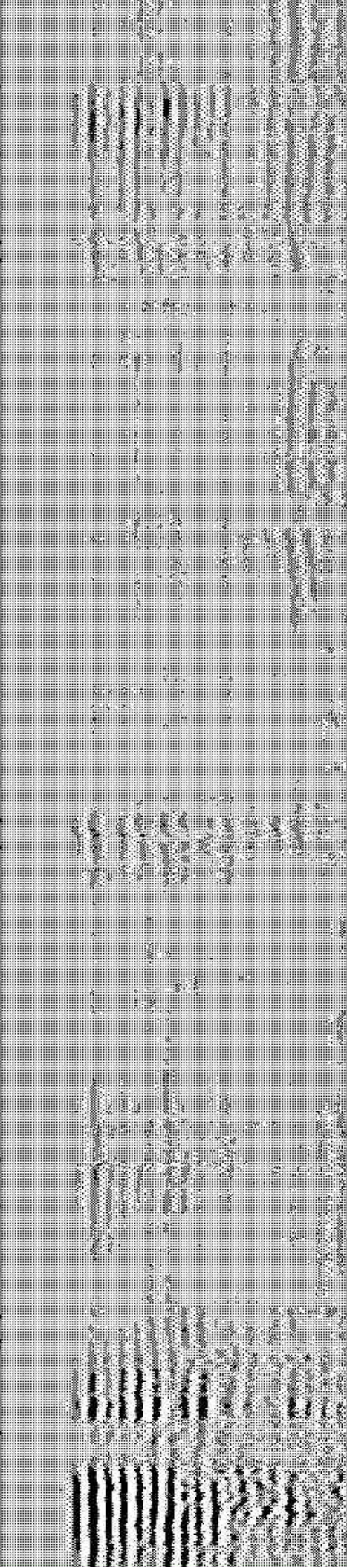
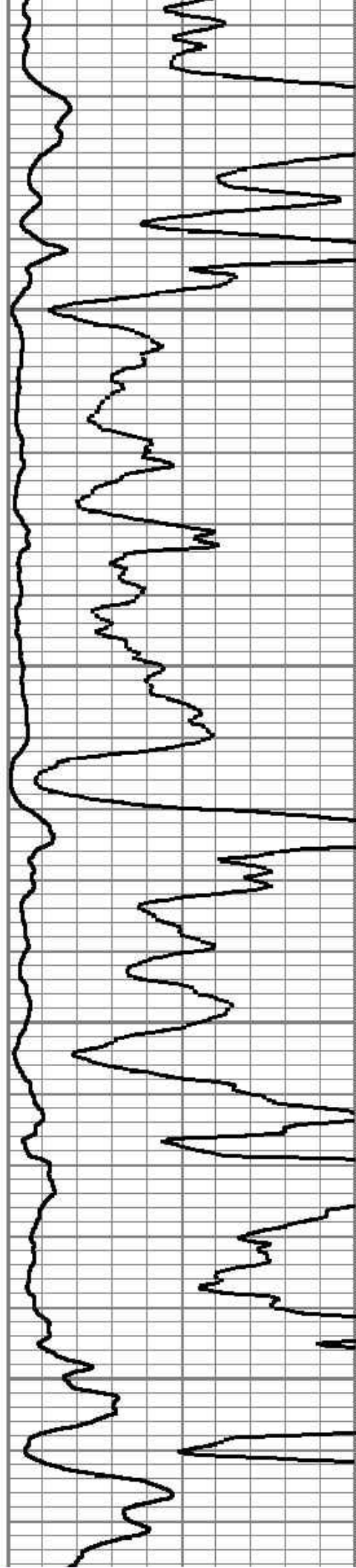


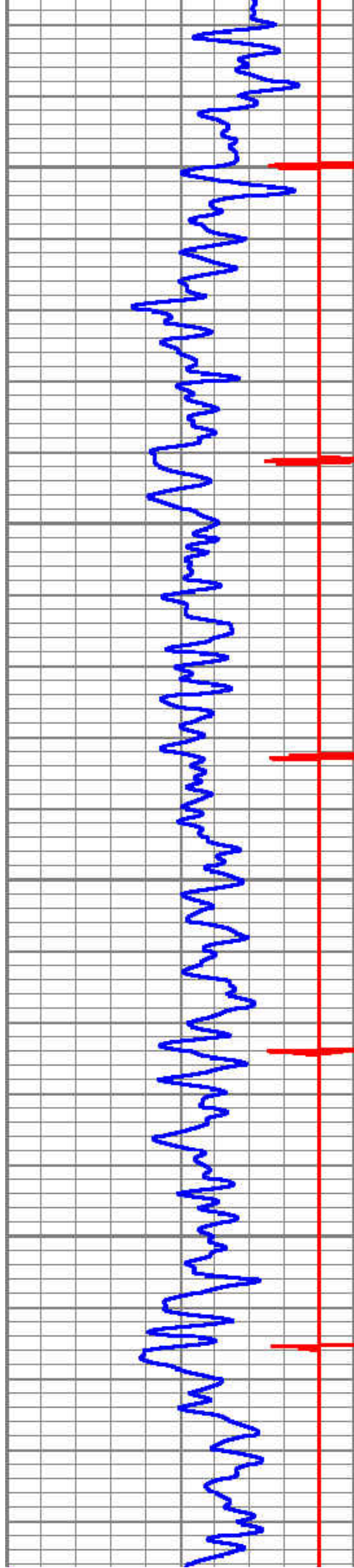
4100

4150

4200

4250



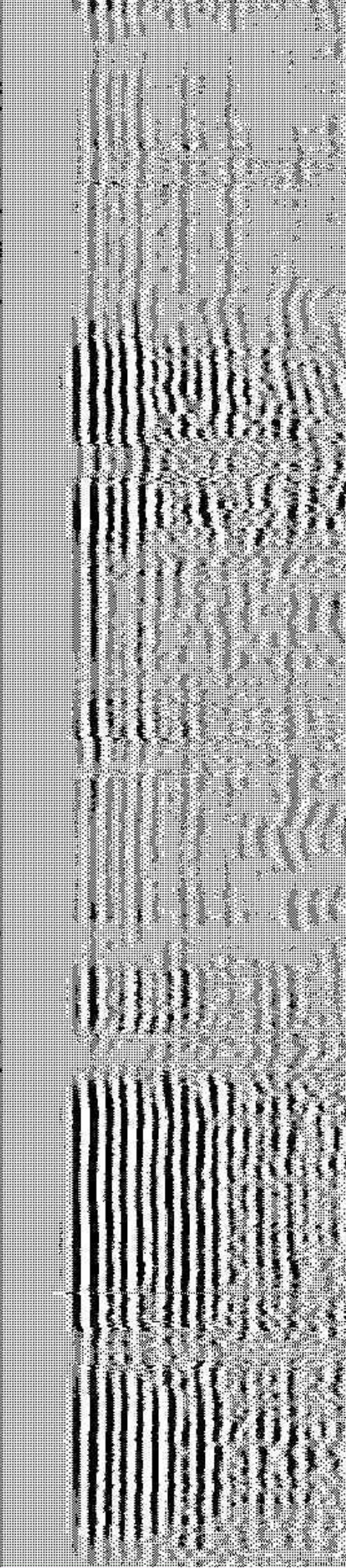
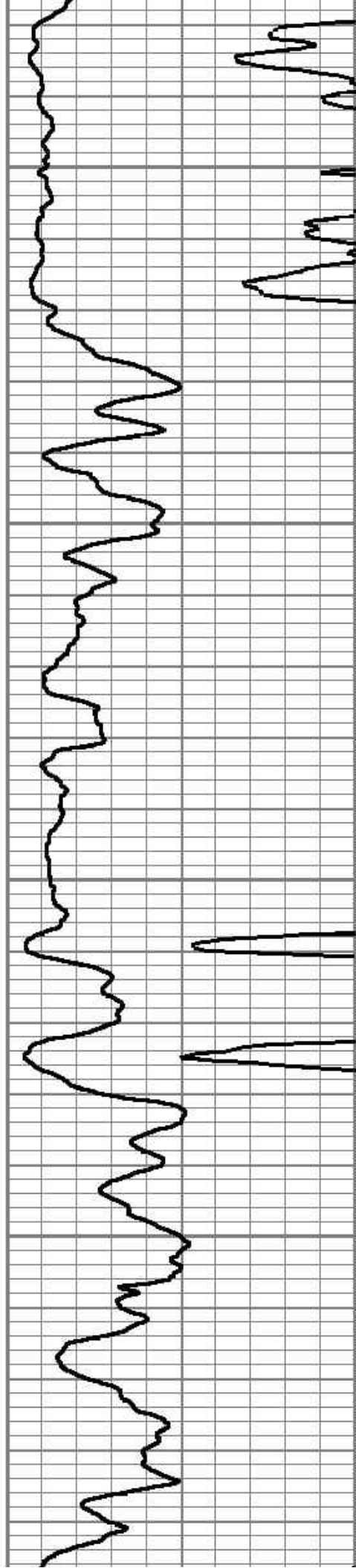


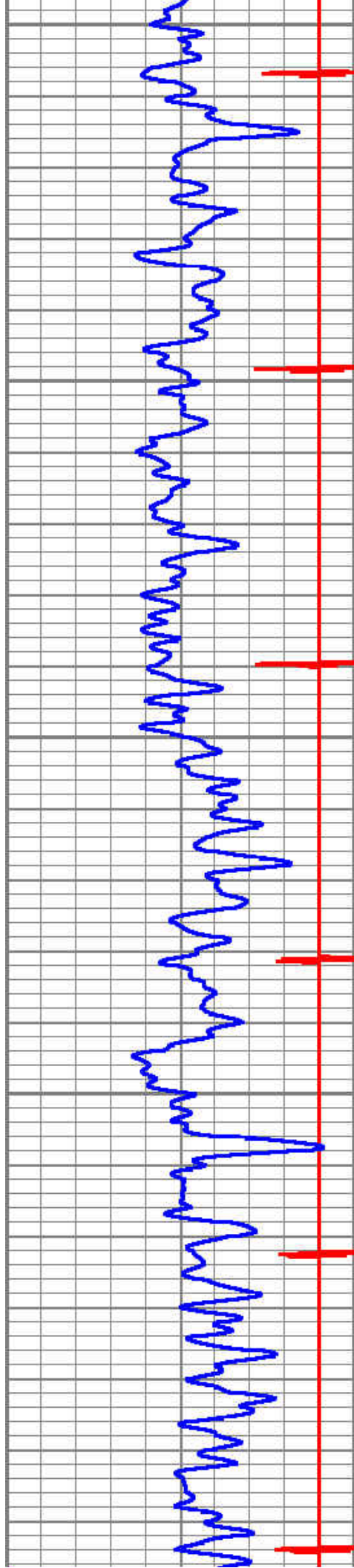
4300

4350

4400

4450





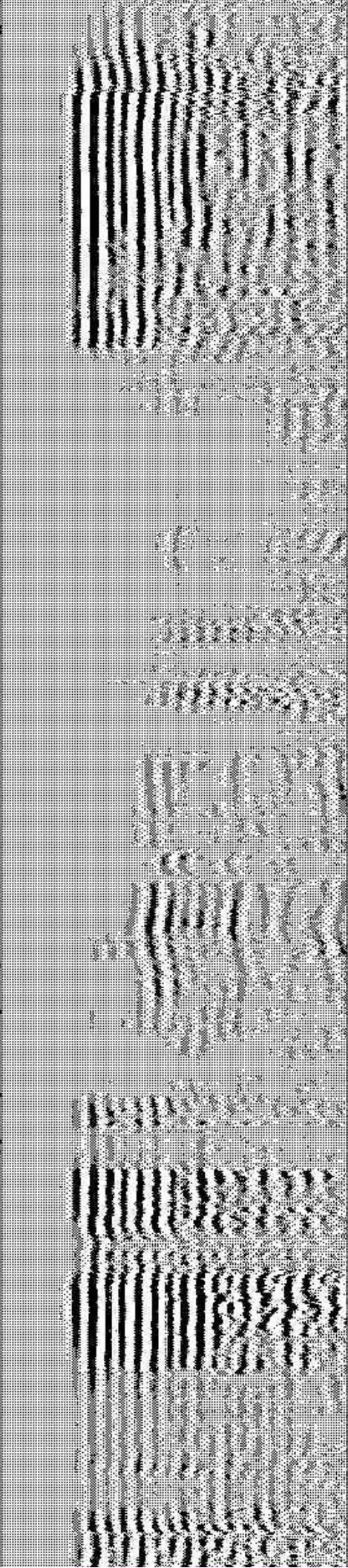
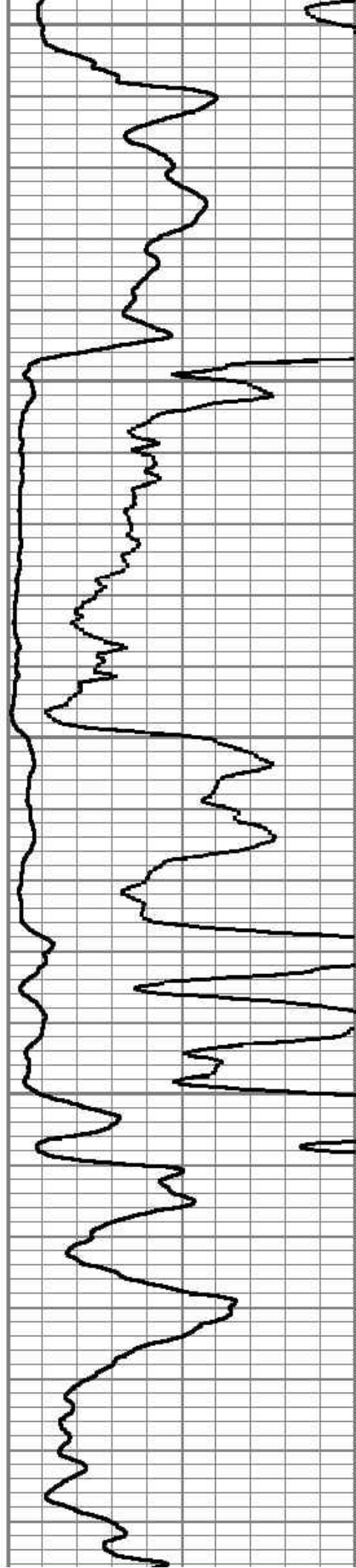
4500

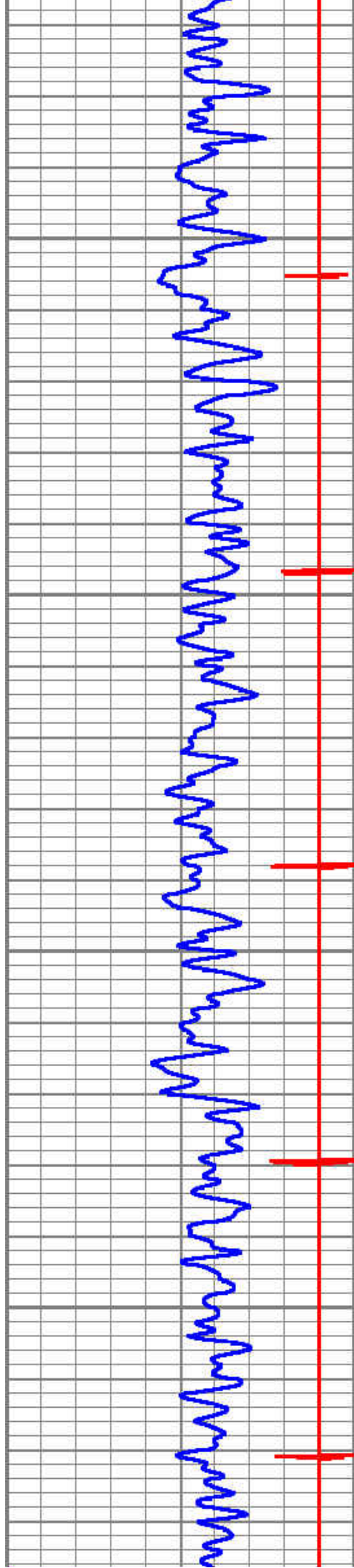
4550

4600

4650

4700



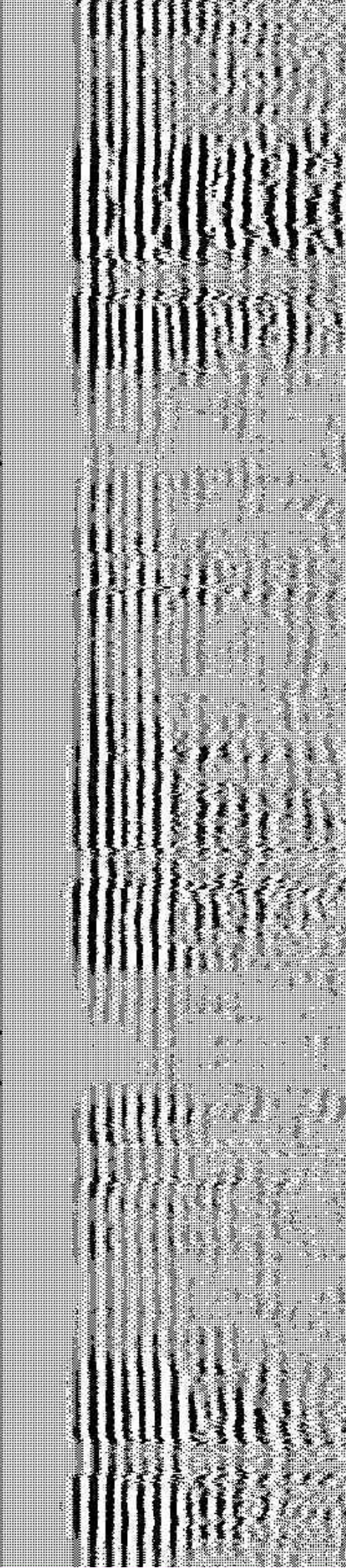
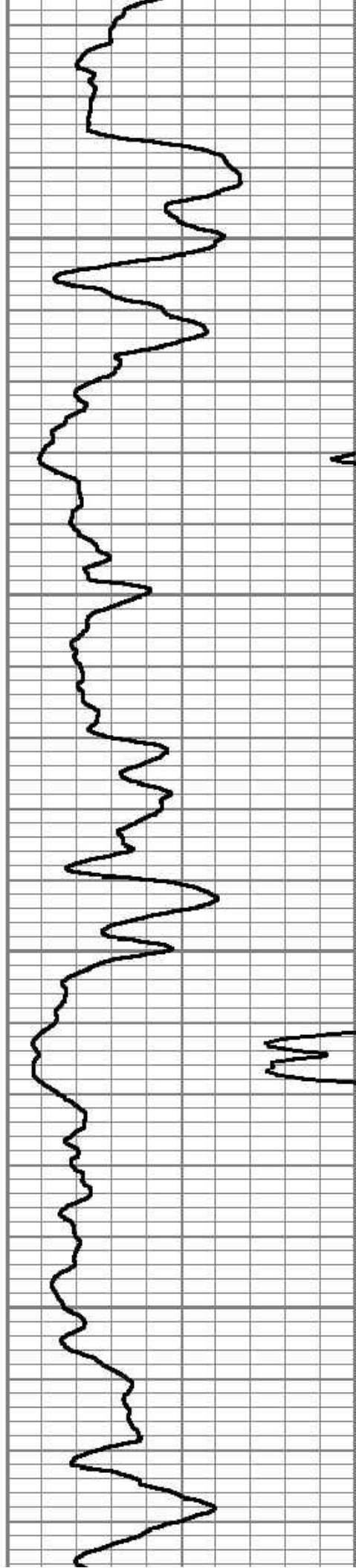


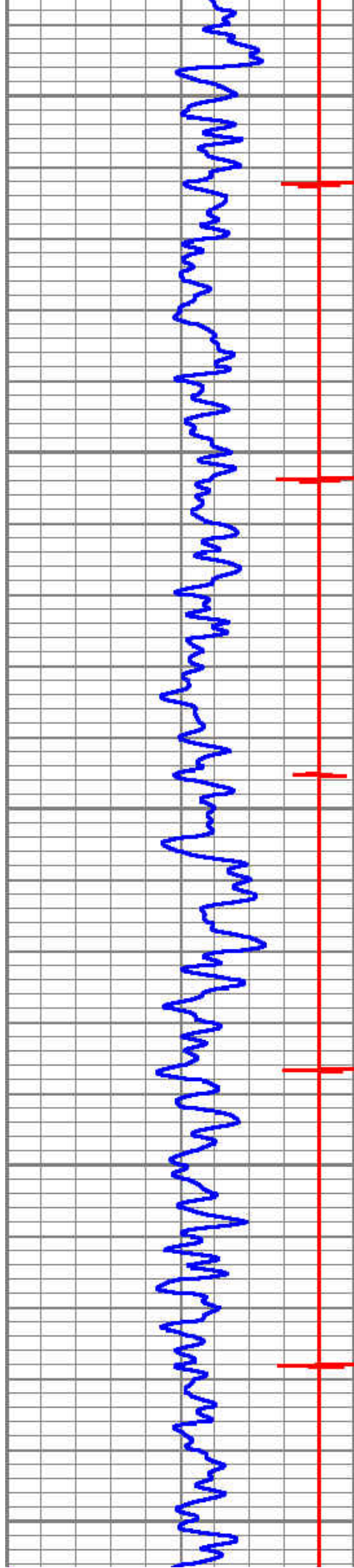
4750

4800

4850

4900





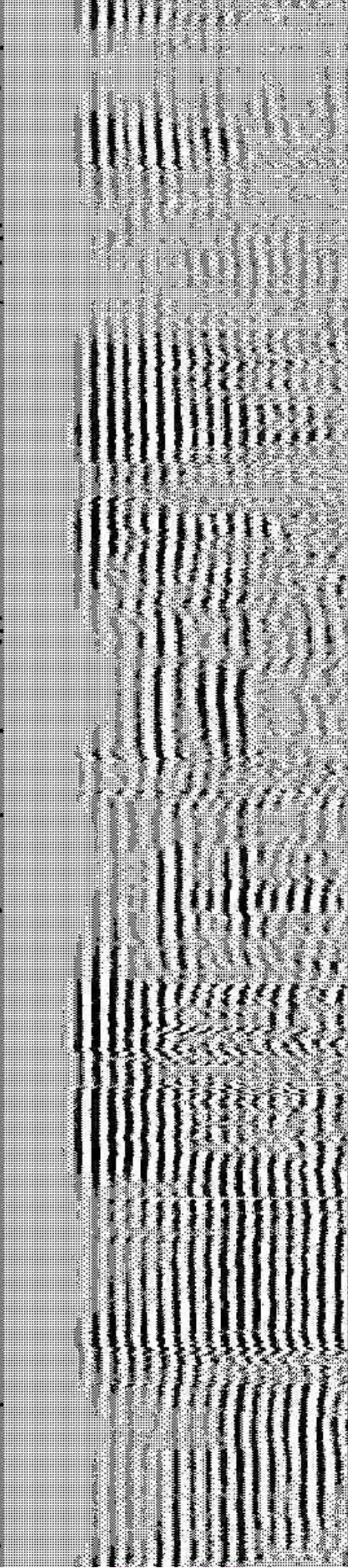
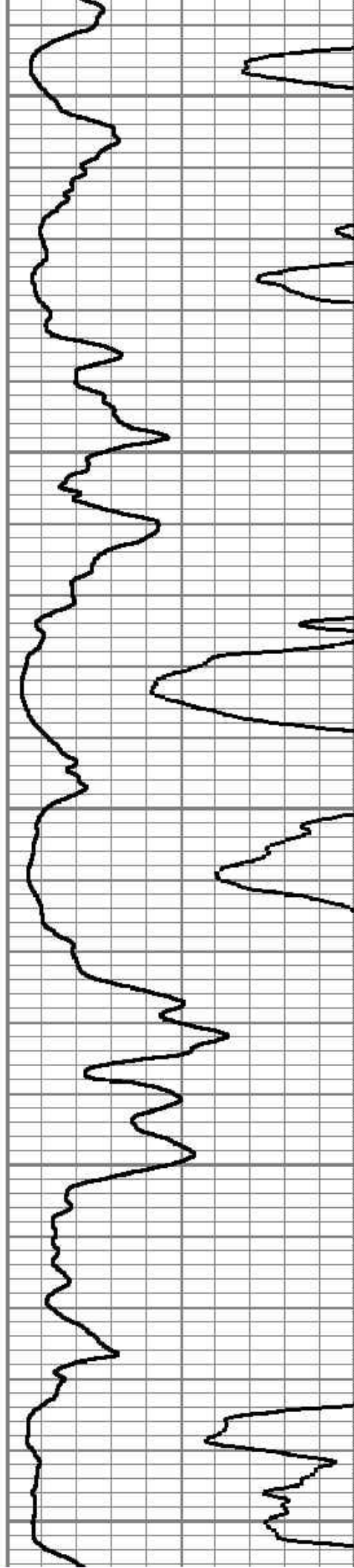
4950

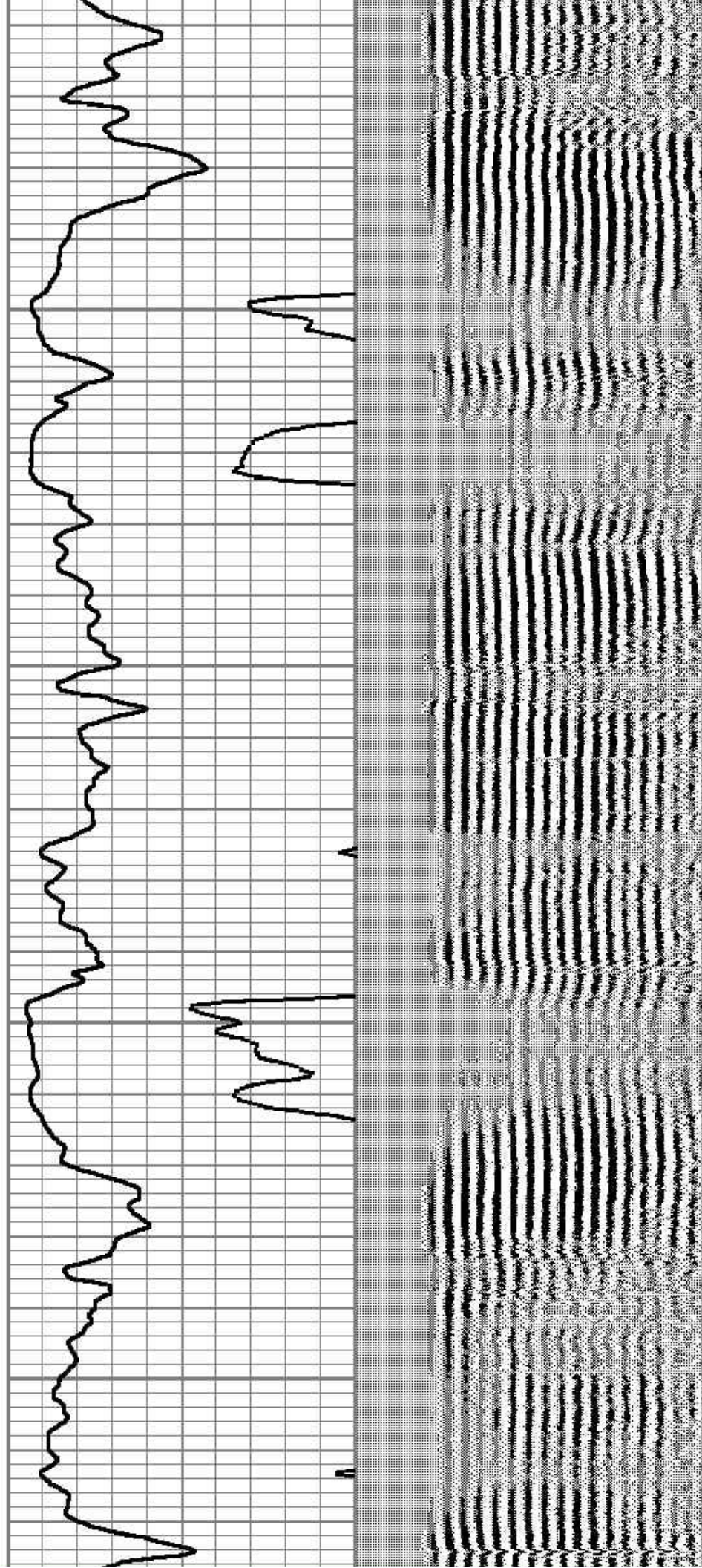
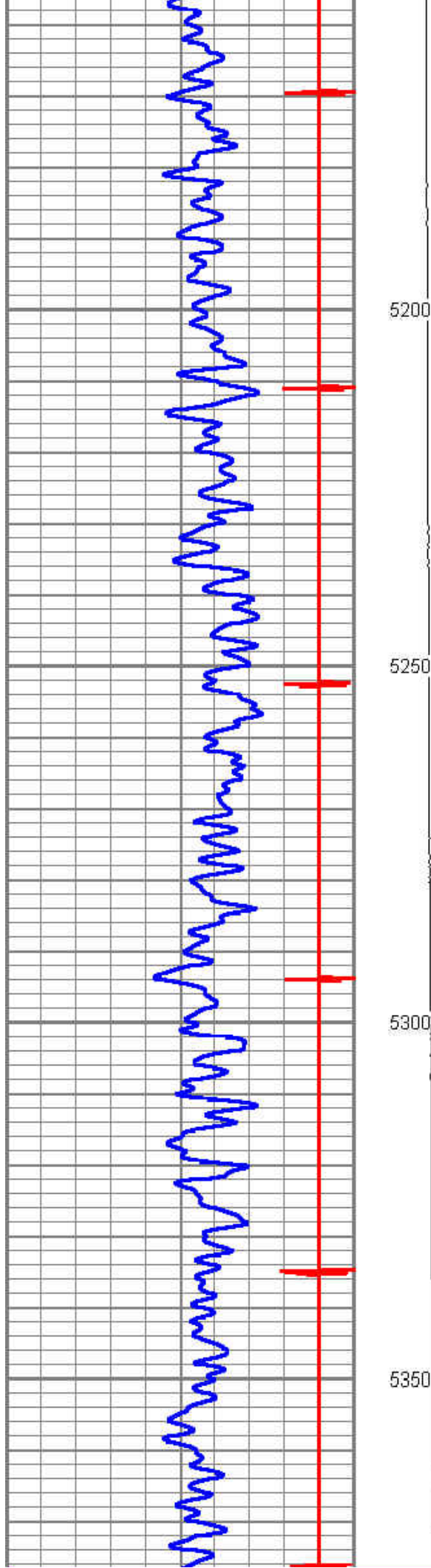
5000

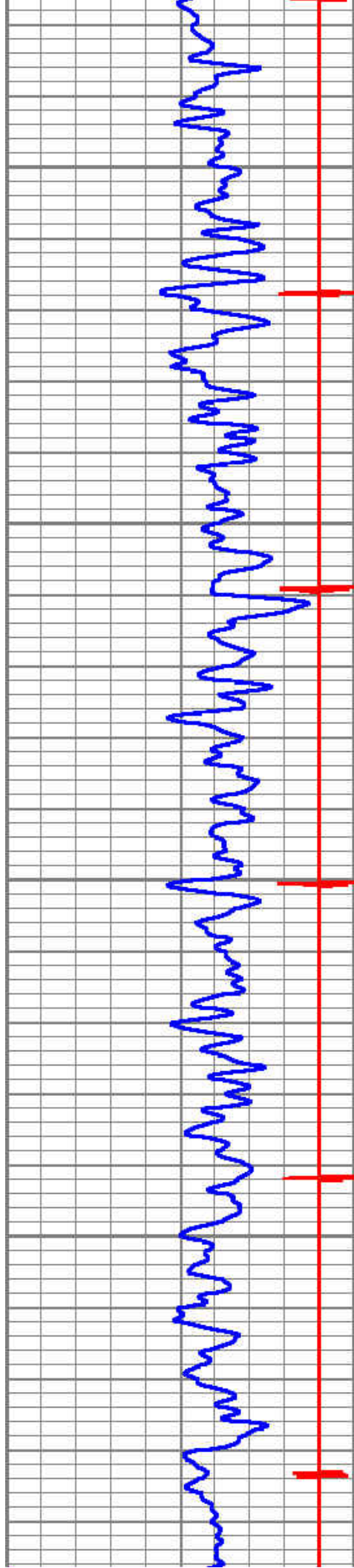
5050

5100

5150





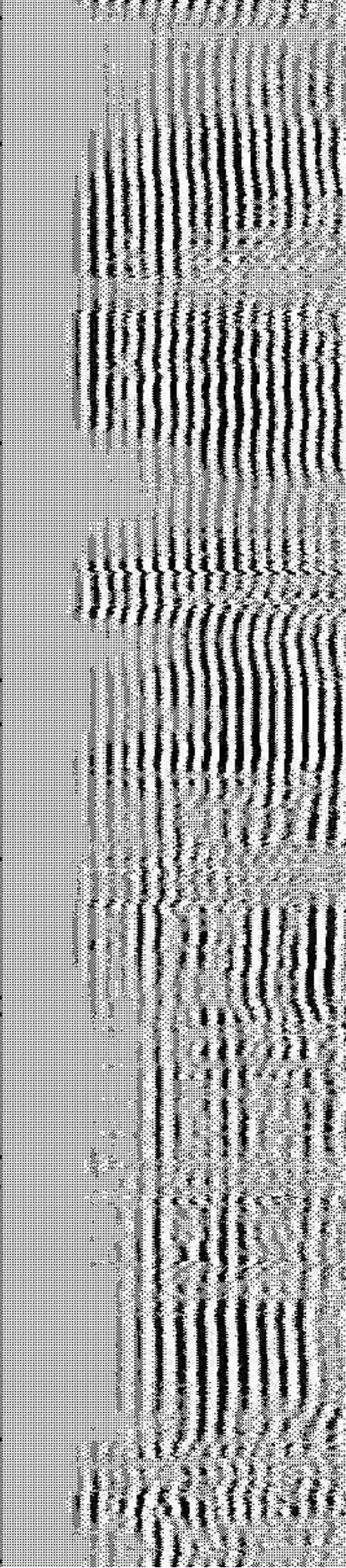
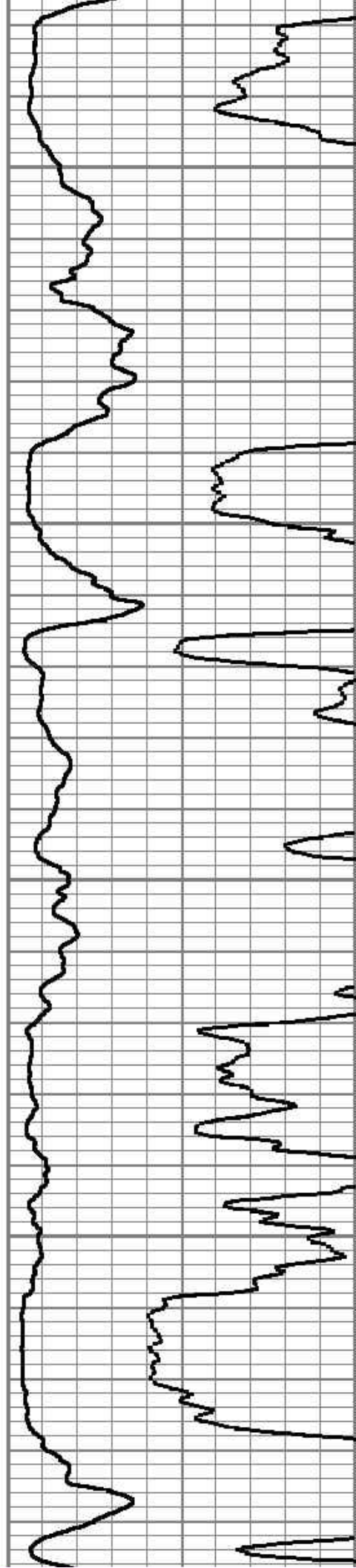


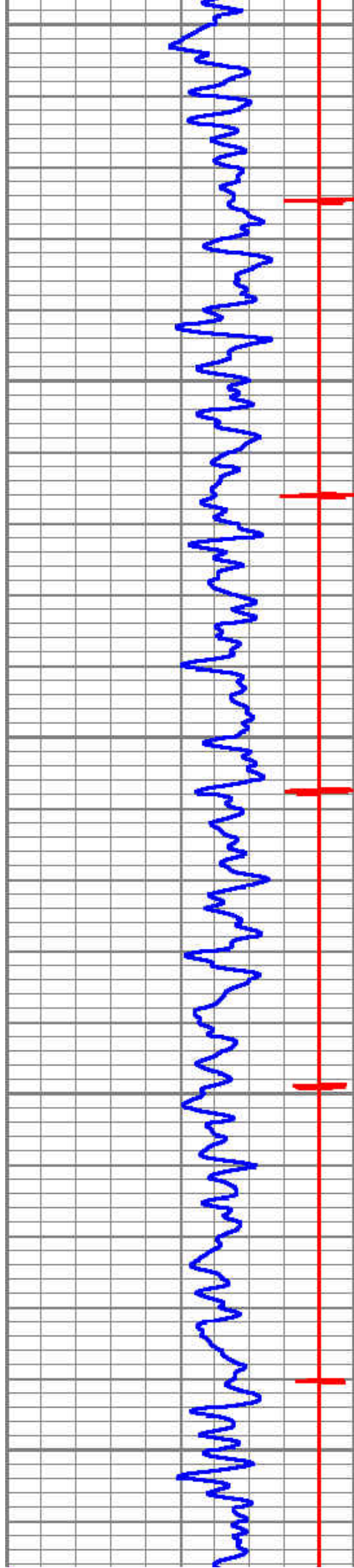
5400

5450

5500

5550





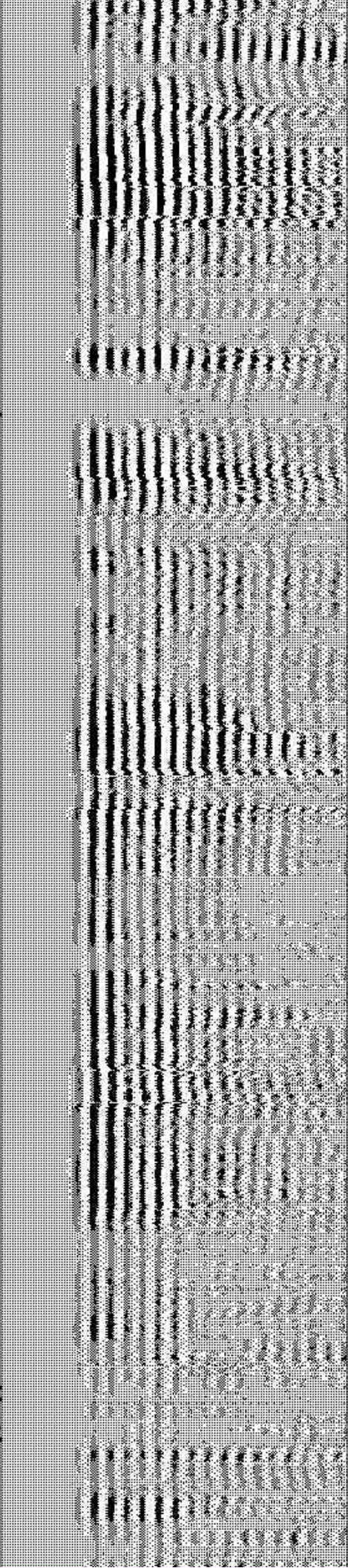
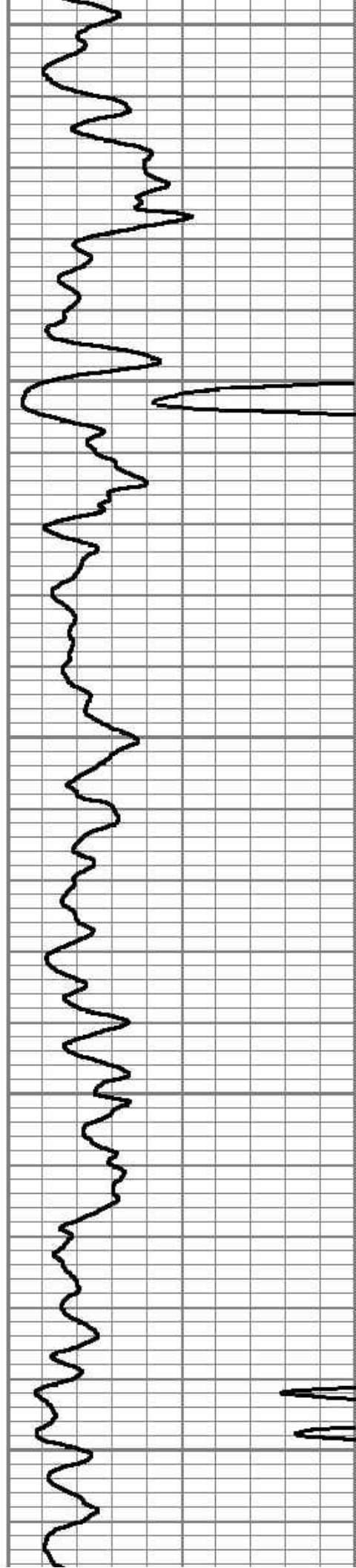
5600

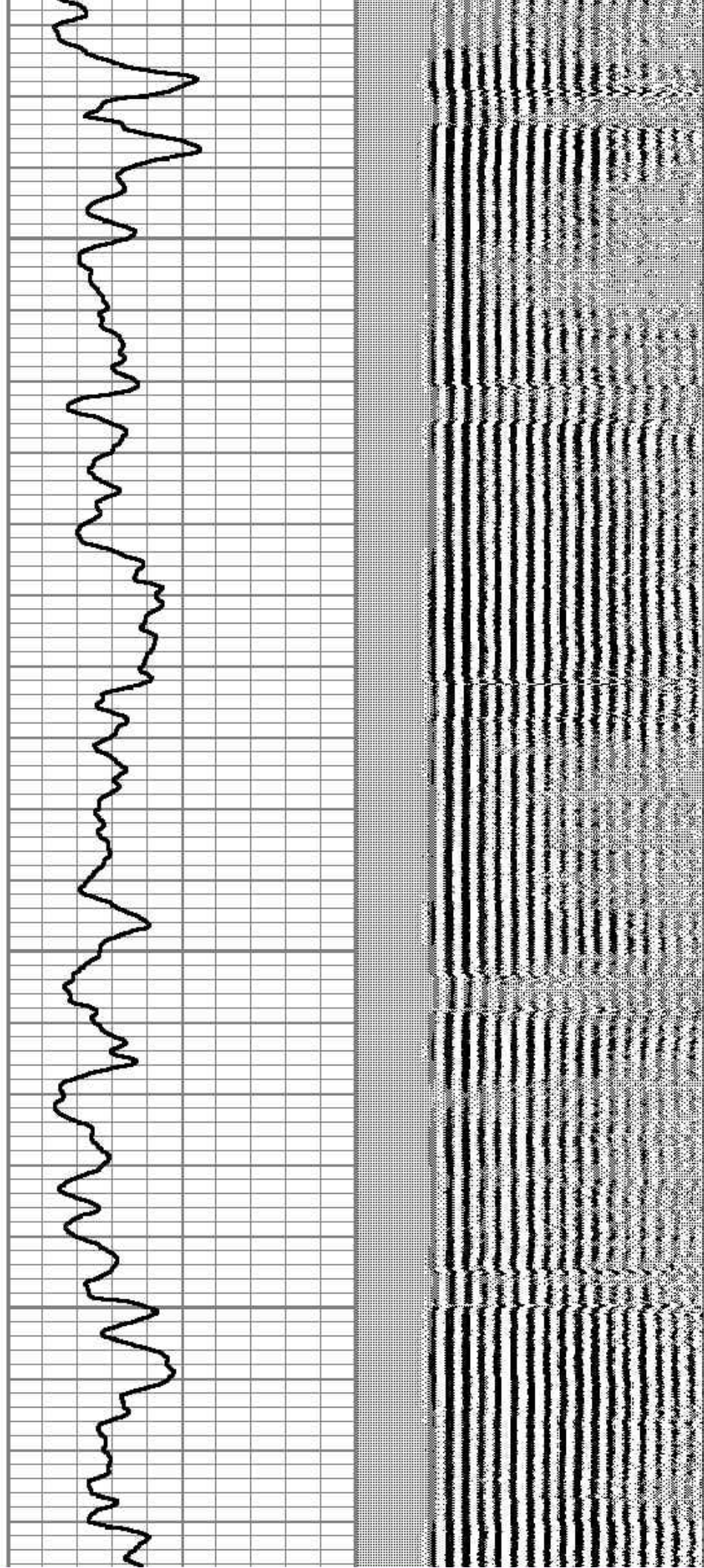
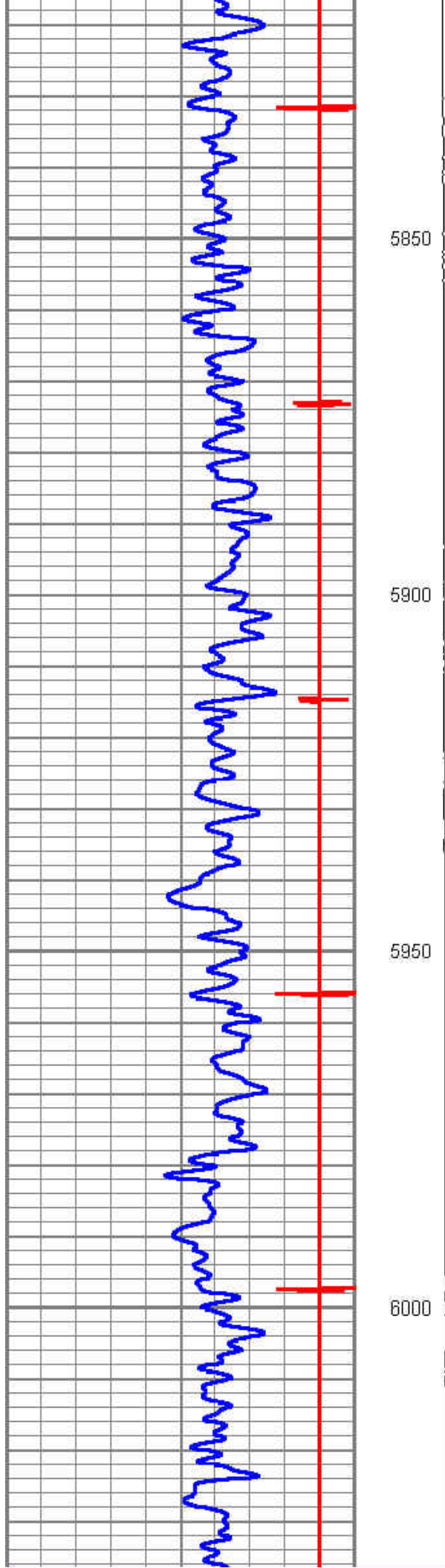
5650

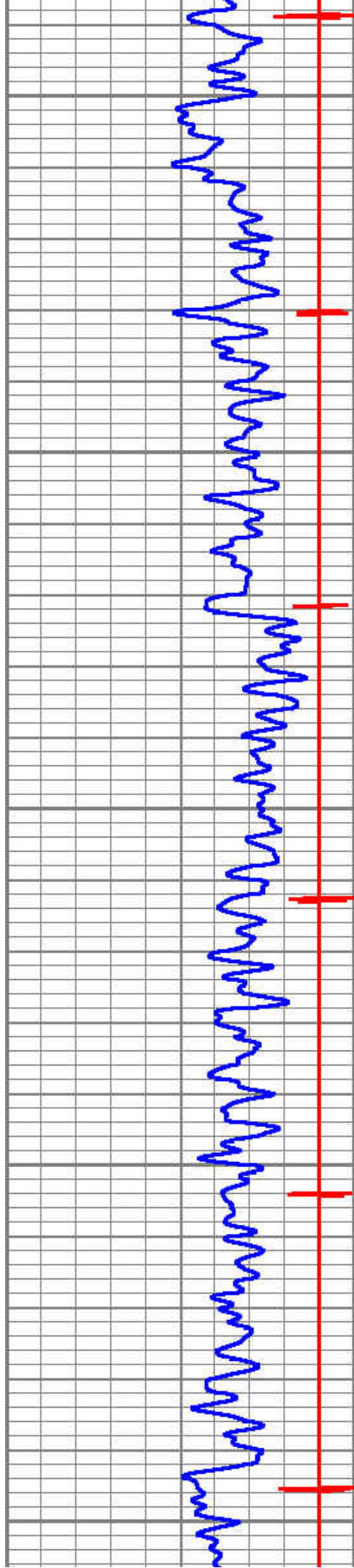
5700

5750

5800







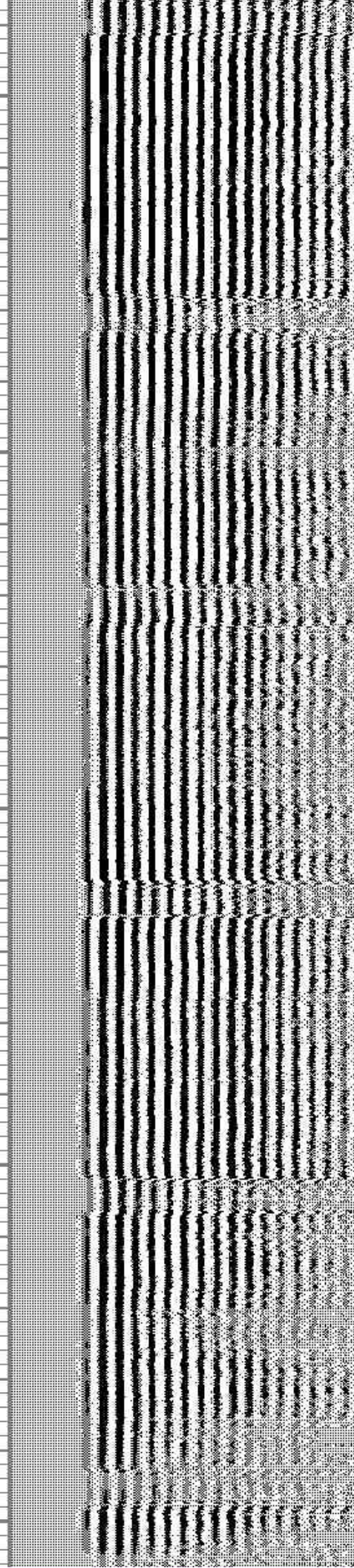
6050

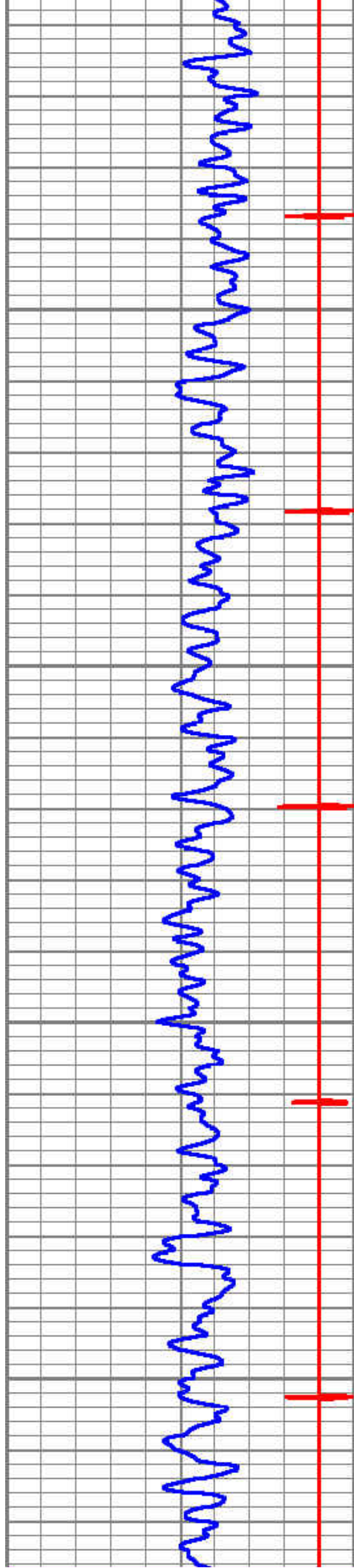
6100

6150

6200

6250



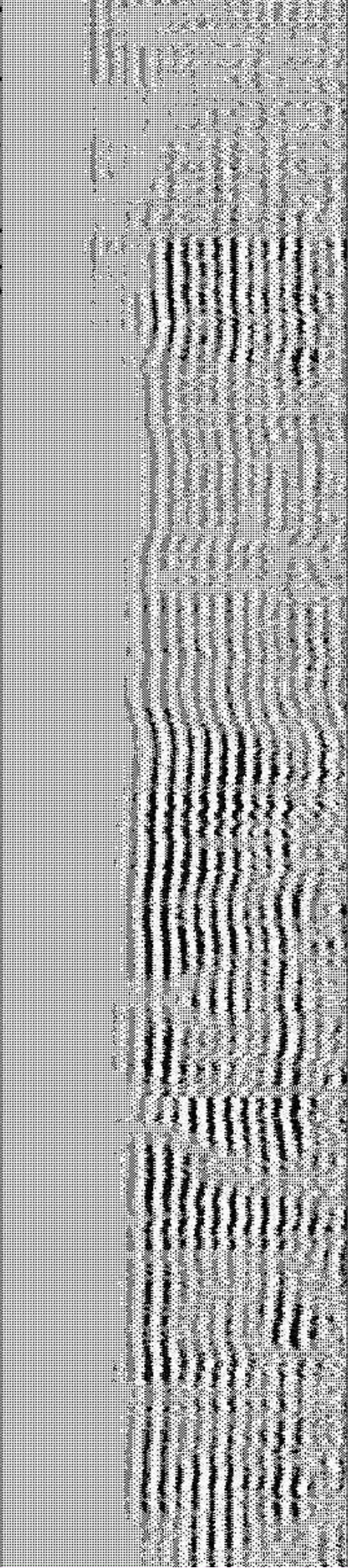
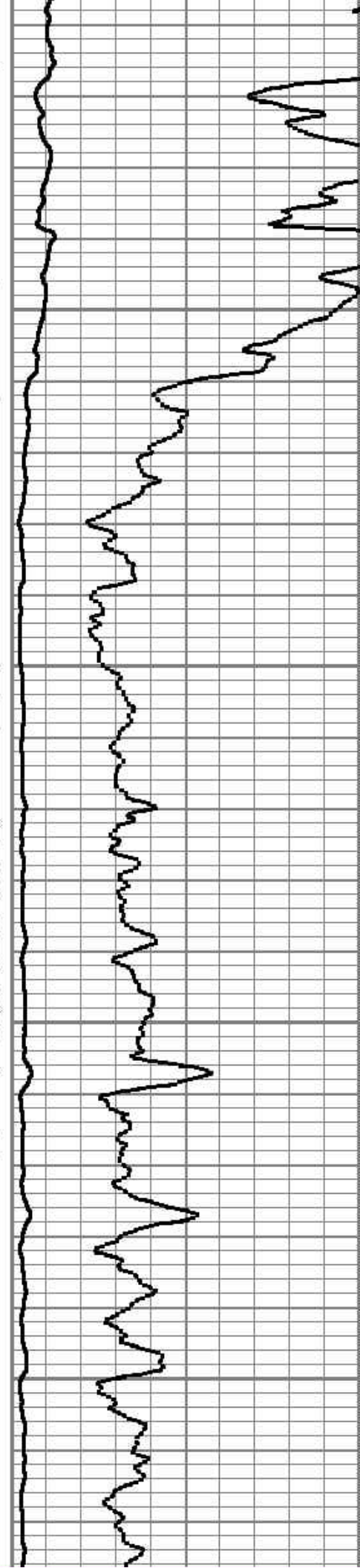


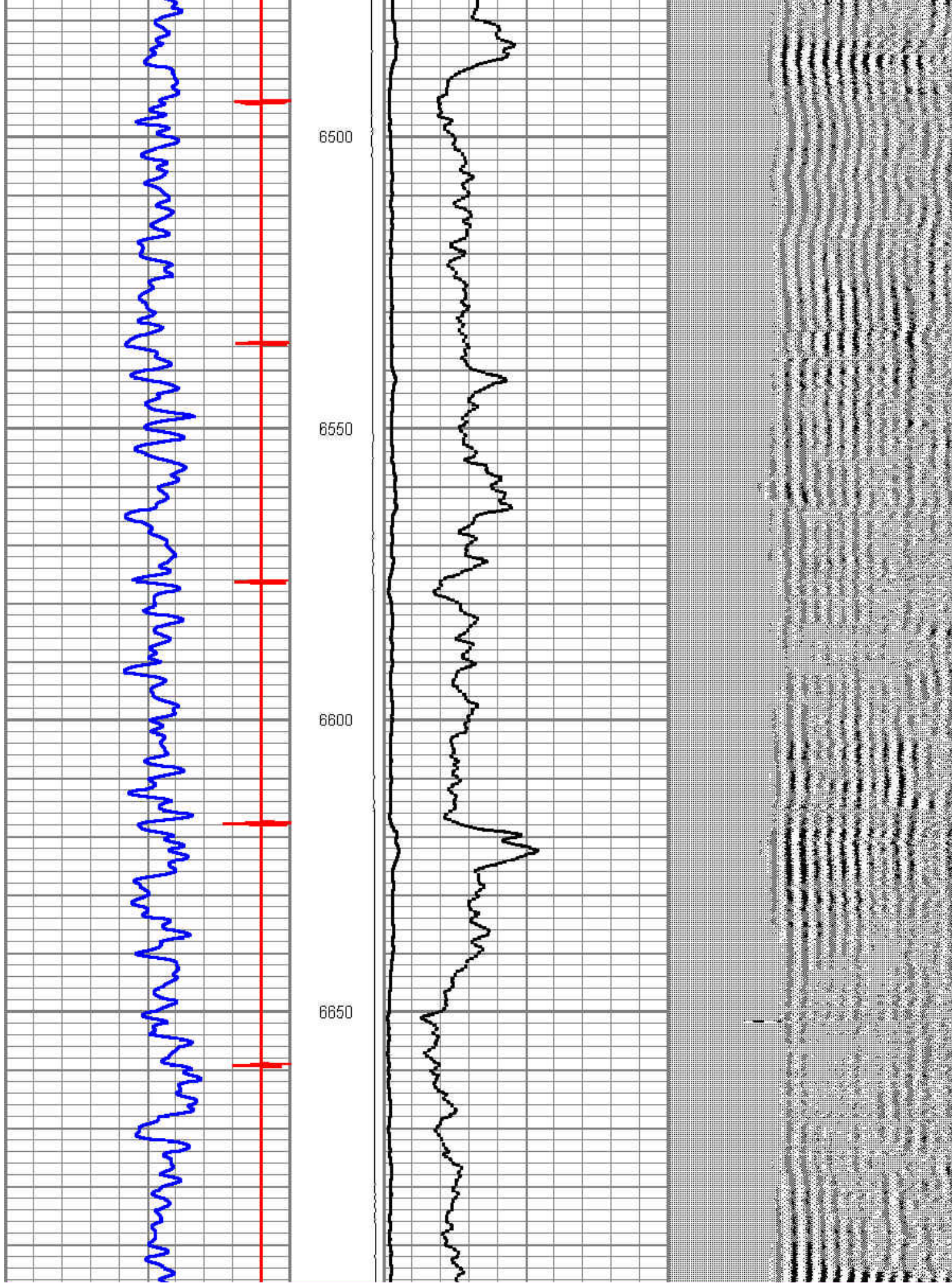
6300

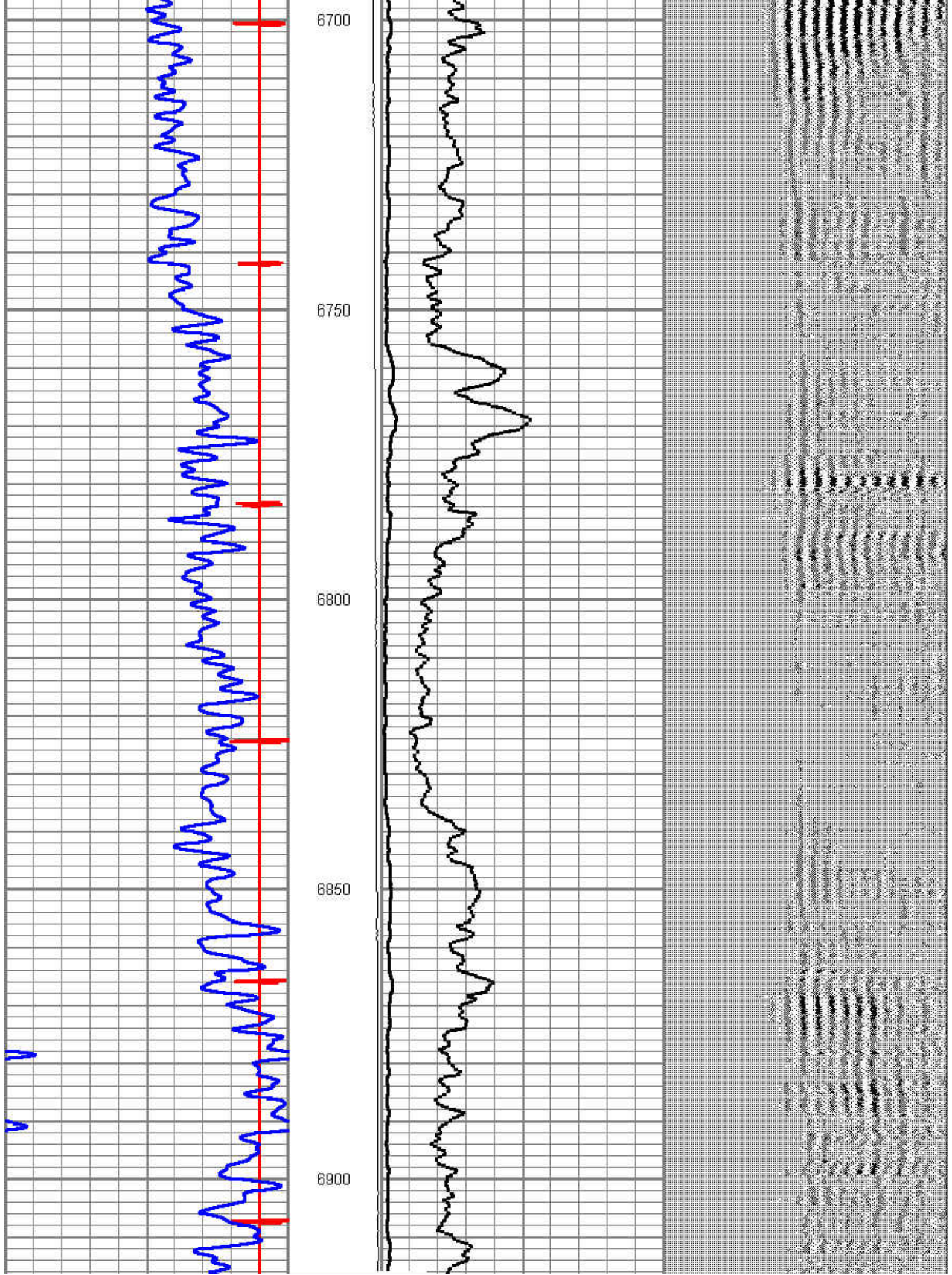
6350

6400

6450







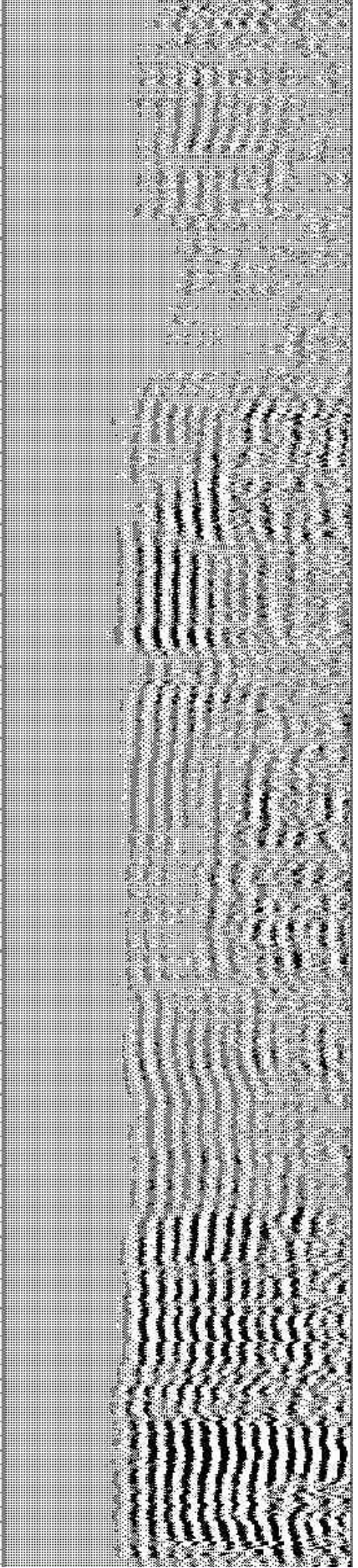
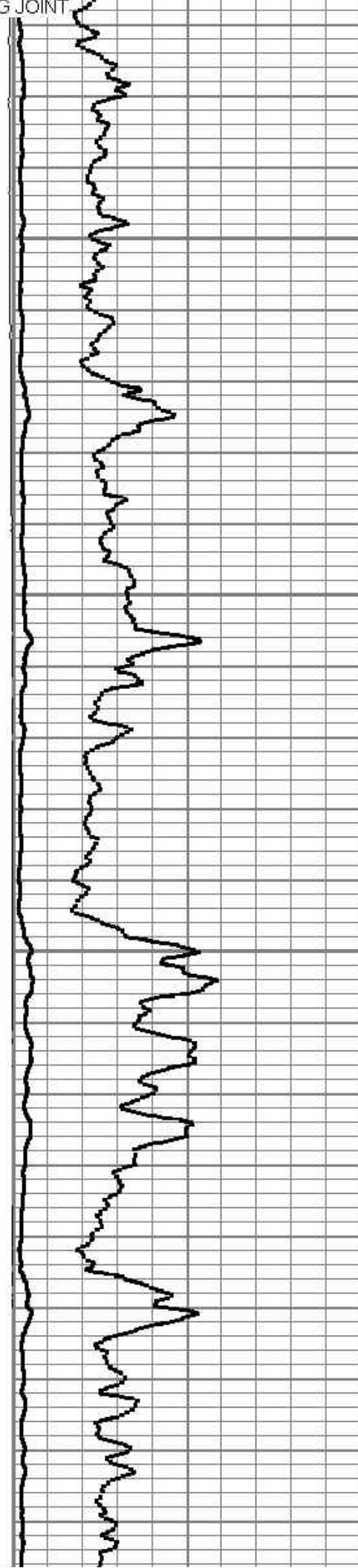
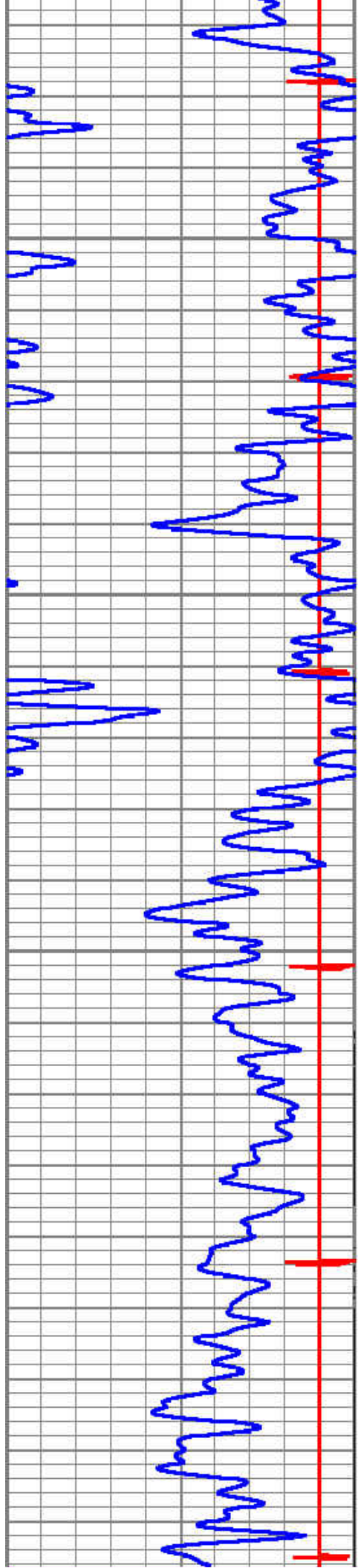
← FLAG JOINT

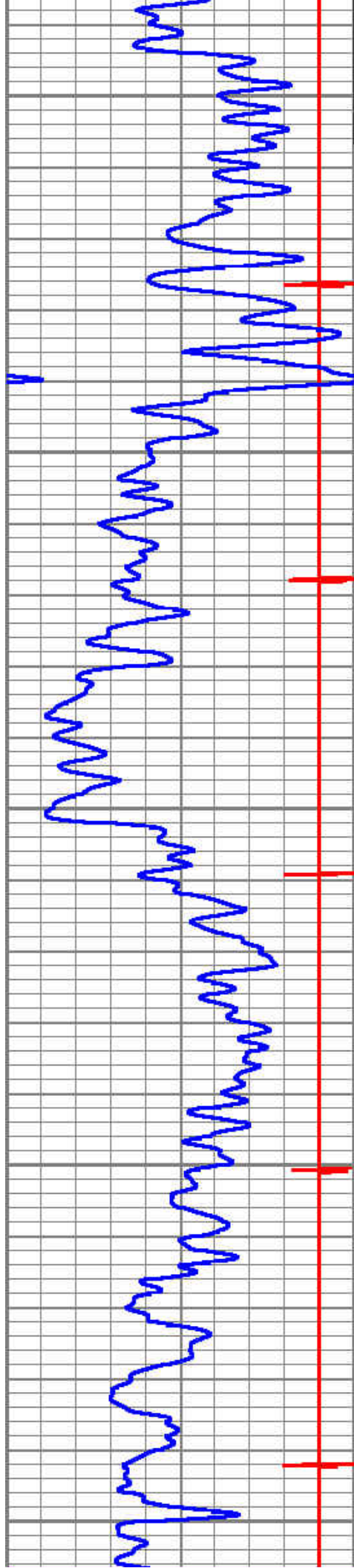
6950

7000

7050

7100





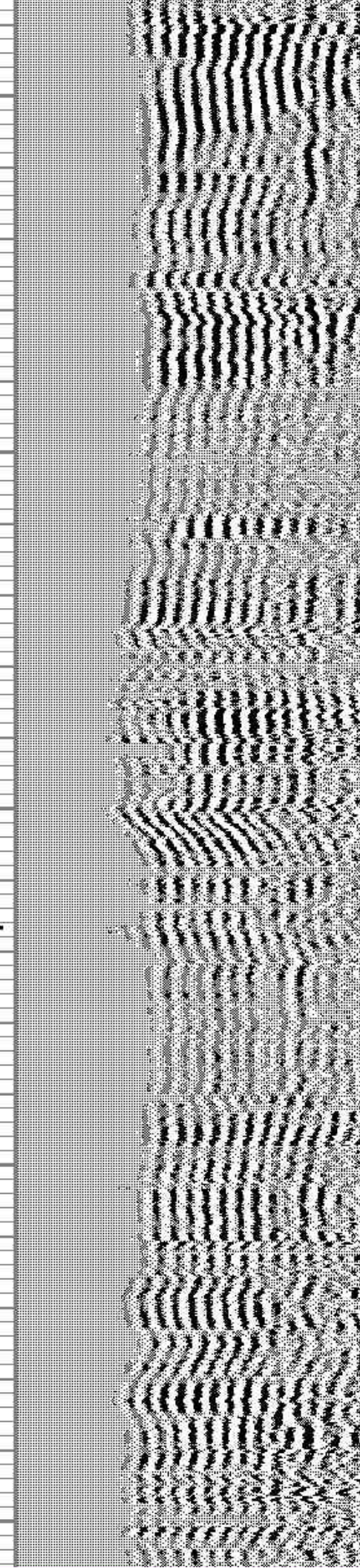
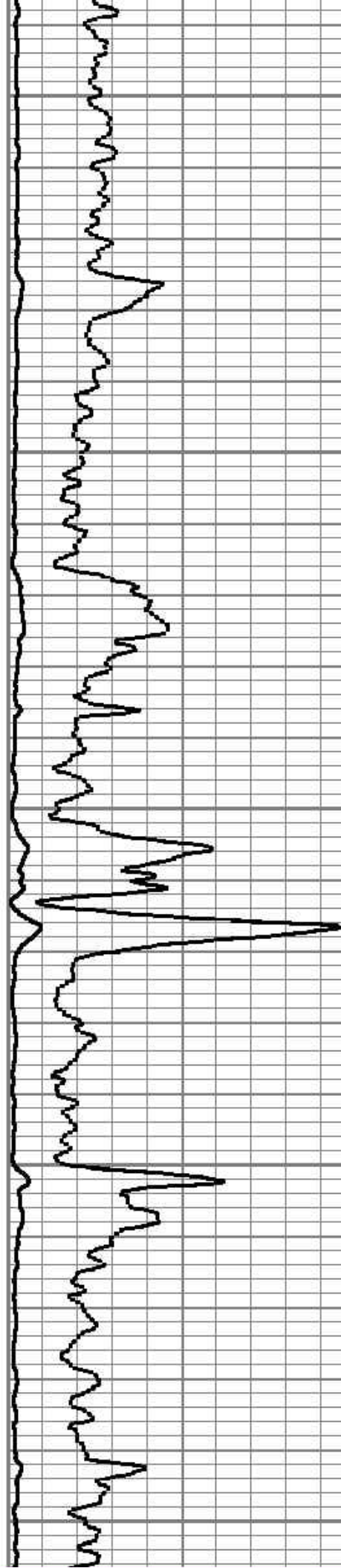
7150

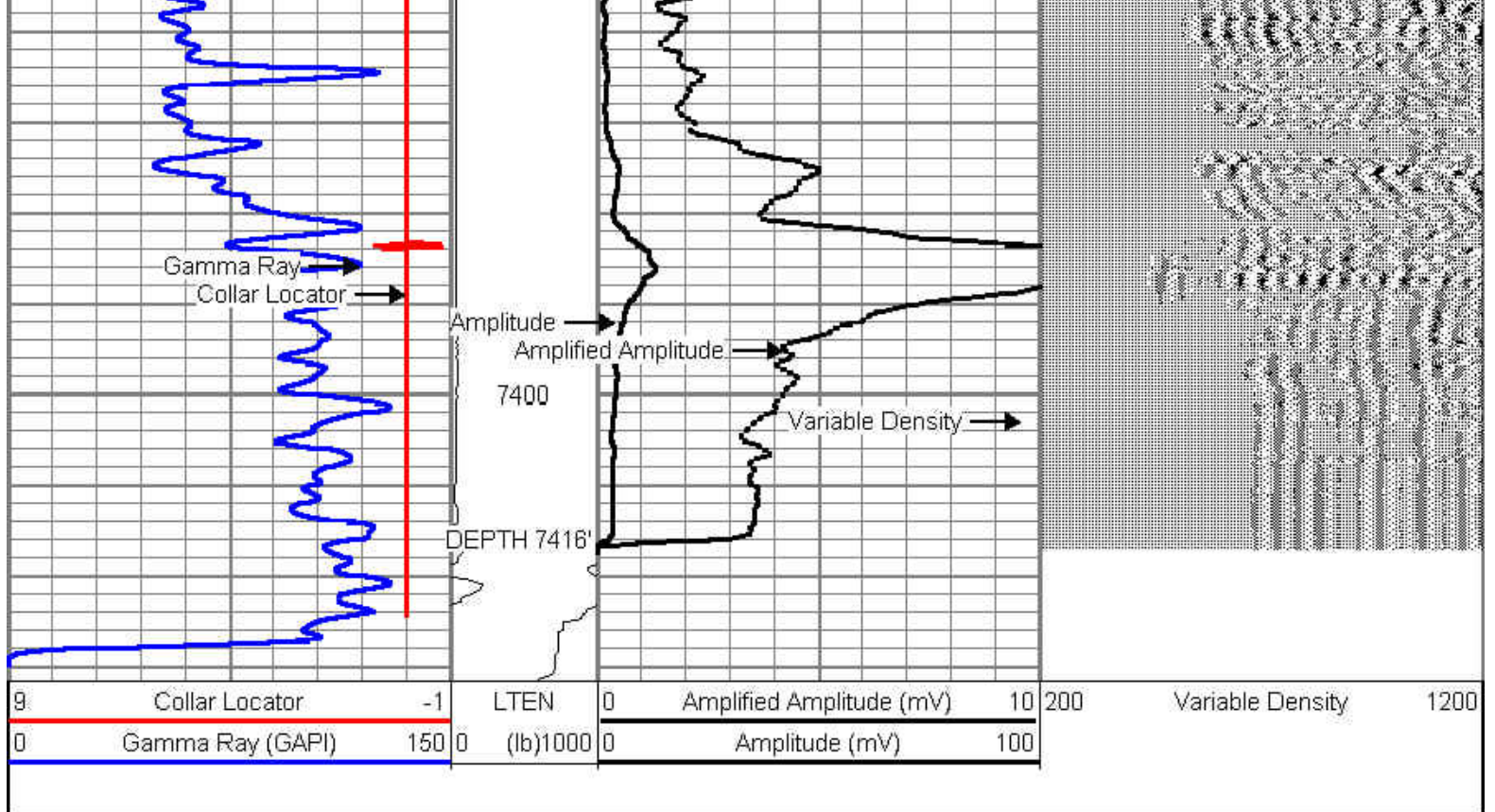
7200

7250

7300

7350





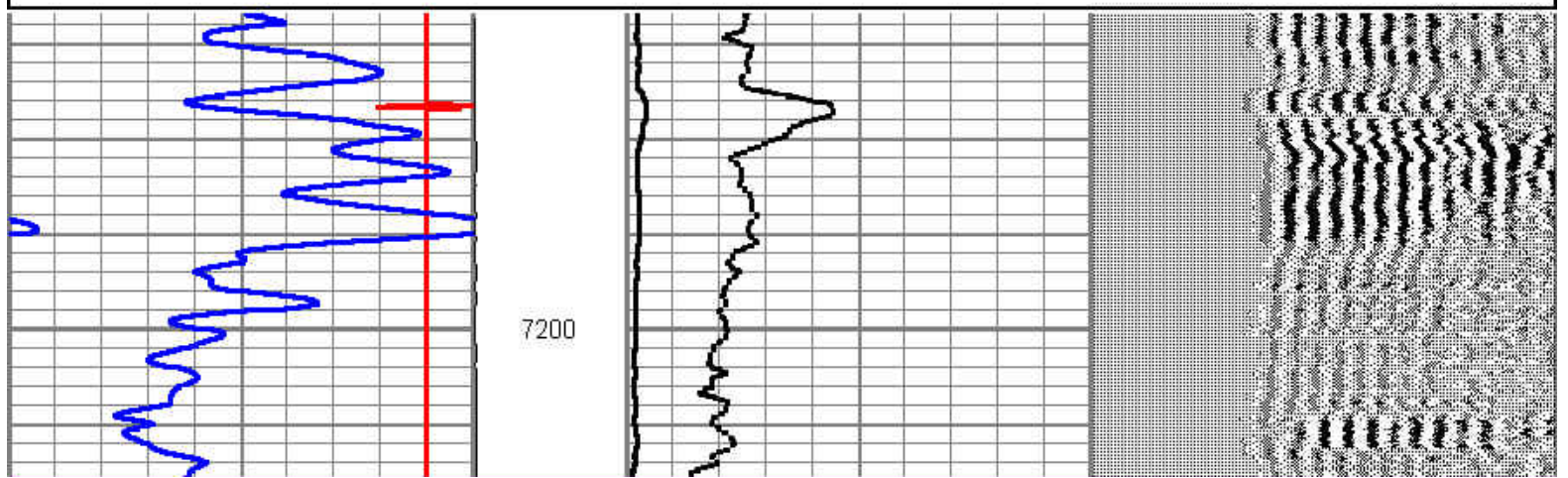
MAIN PASS

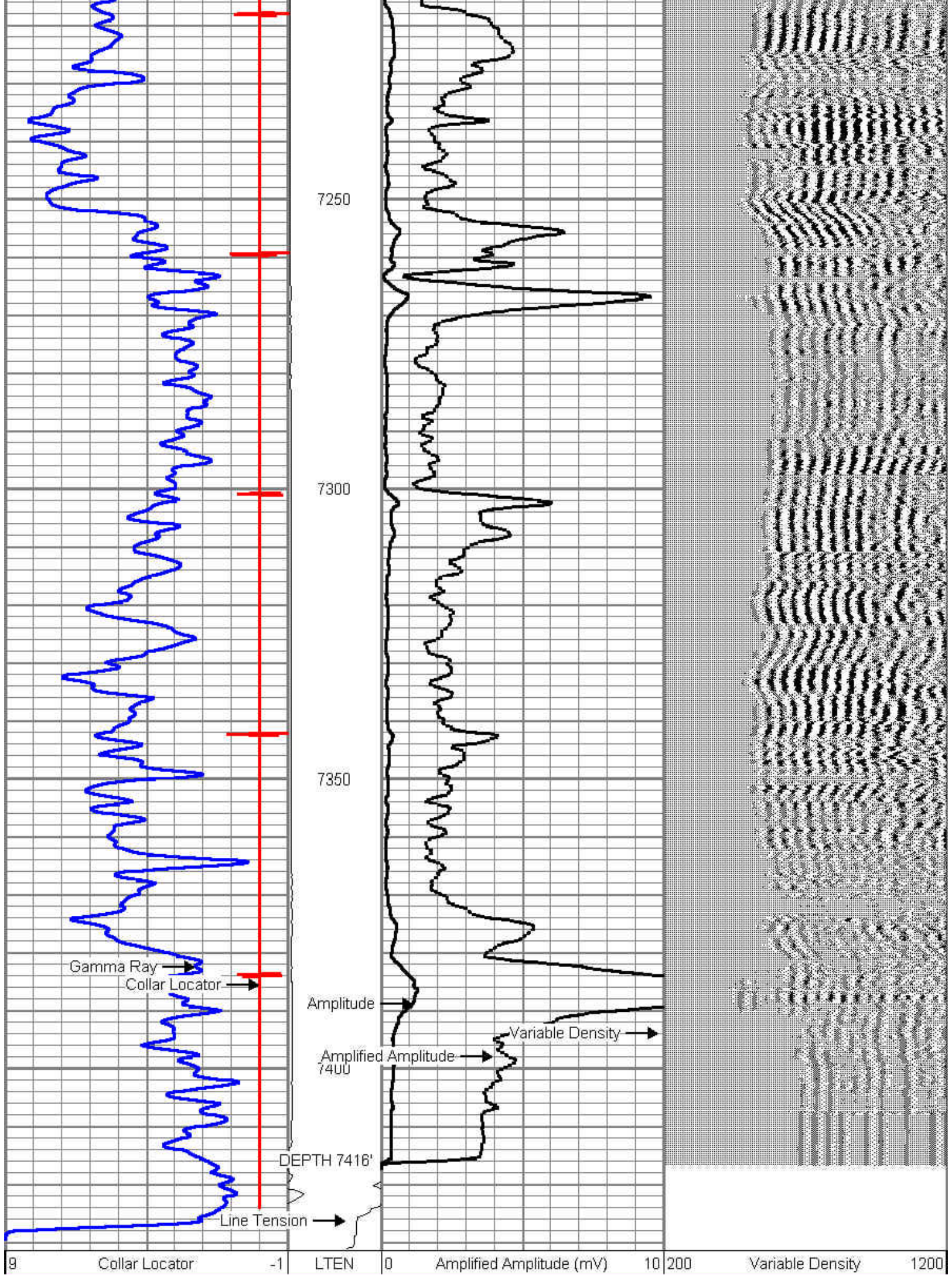


REPEAT PASS

Database File: aristocrat angus 3-3 enc.db
 Dataset Pathname: pass4
 Presentation Format: cbl_dr
 Dataset Creation: Fri May 31 11:28:57 2013 by Log SCH 120430
 Charted by: Depth in Feet scaled 1:240

9	Collar Locator	-1	LTEN	0	Amplified Amplitude (mV)	10	200	Variable Density	1200
0	Gamma Ray (GAPI)	150	0	(lb)1000	0	Amplitude (mV)	100		





0	Gamma Ray (GAPI)	150	0	(lb)1000	0	Amplitude (mV)	100
---	------------------	-----	---	----------	---	----------------	-----



REPEAT PASS