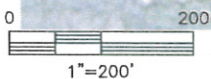
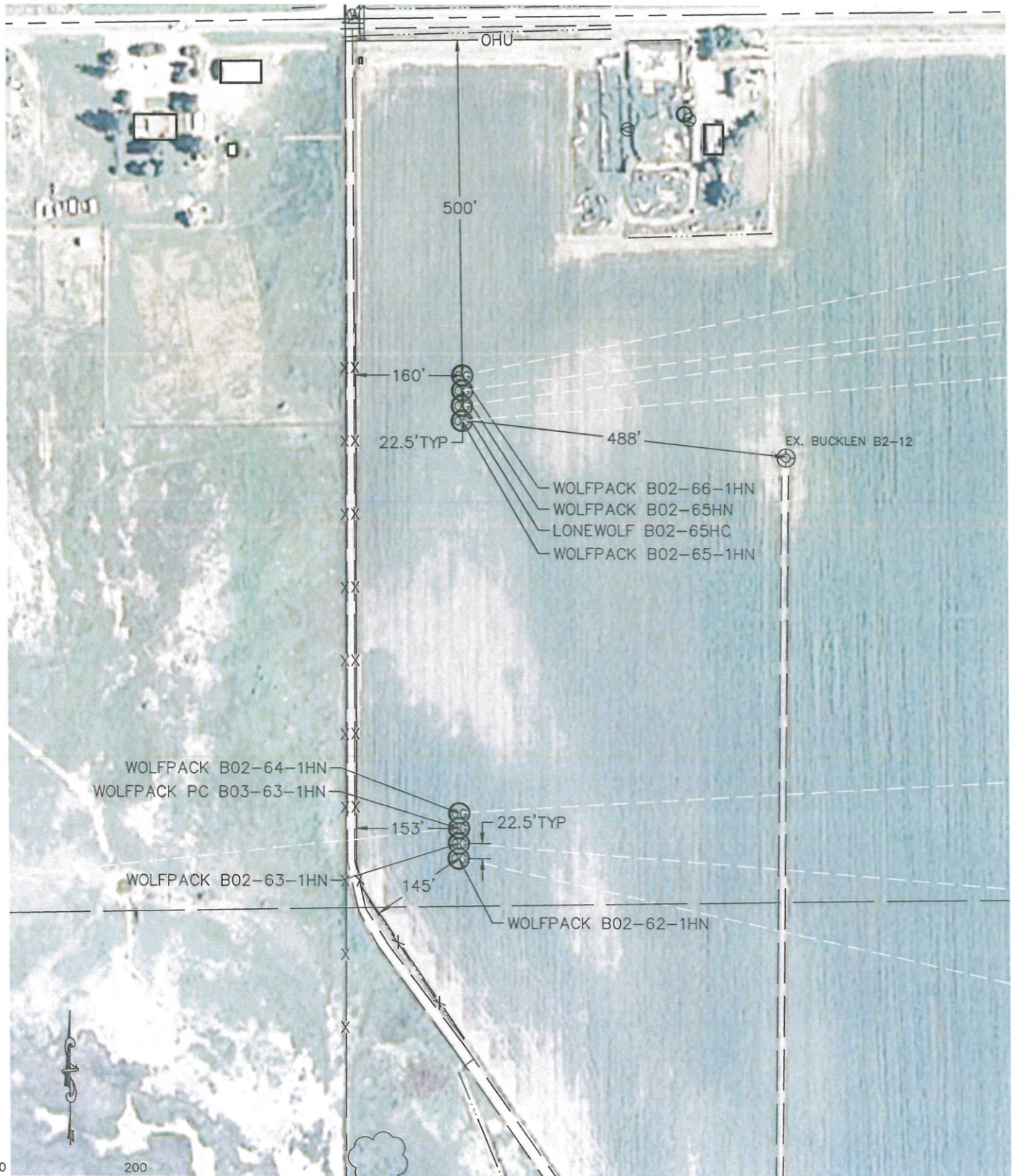


MULTI-WELL PLAN

WOLFPACK B02-62-1HN PAD &
WOLFPACK B02-66-1HN PAD

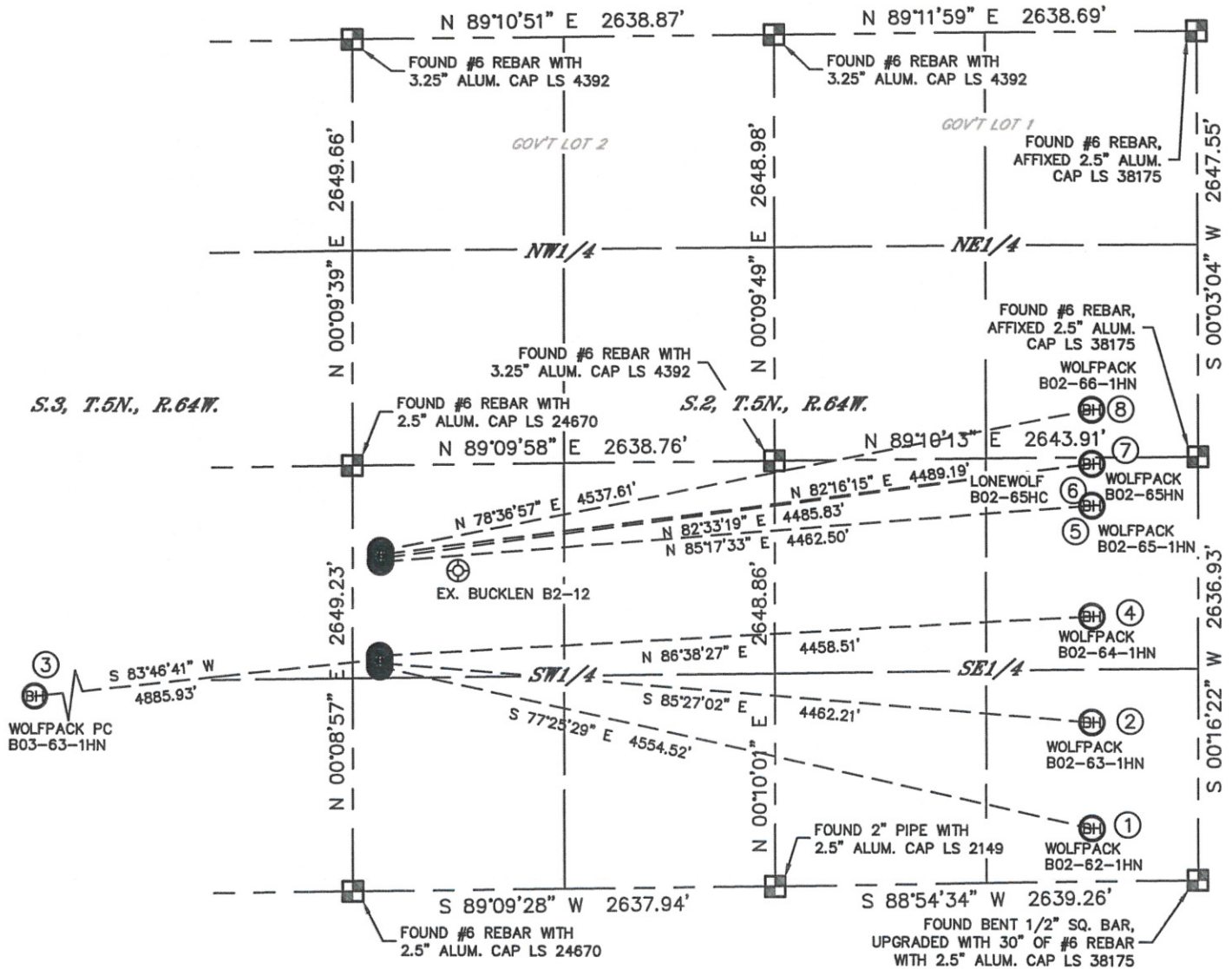
SECTION: 2
TOWNSHIP: 5N
RANGE: 64W



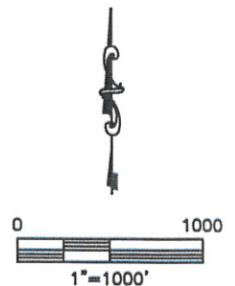
MULTI-WELL PLAN

WOLFPACK B02-62-1HN PAD &
WOLFPACK B02-66-1HN PAD
THIS MAP DOES NOT REPRESENT A BOUNDARY SURVEY

SECTION: 2
TOWNSHIP: 5N
RANGE: 64W



- | | | | |
|----------------------------------------------------------------------------------------------------------------------------|---------------------------------------------------------------------------------------------------------------------------|------------------------------------------------------------------------------------------------------------------------------|----------------------------------------------------------------------------------------------------------------------------|
| <p>①</p> <p>—BOTTOM HOLE—
WOLFPACK B02-62-1HN
330' FSL
660' FEL
LAT: 40.42205°N
LONG: 104.51044°W</p> | <p>②</p> <p>—BOTTOM HOLE—
WOLFPACK B02-63-1HN
990' FSL
660' FEL
LAT: 40.42386°N
LONG: 104.51040°W</p> | <p>③</p> <p>—BOTTOM HOLE—
WOLFPACK PC B03-63-1HN
990' FSL
535' FWL
LAT: 40.42372°N
LONG: 104.54382°W</p> | <p>④</p> <p>—BOTTOM HOLE—
WOLFPACK B02-64-1HN
1650' FSL
660' FEL
LAT: 40.42567°N
LONG: 104.51036°W</p> |
| <p>⑤</p> <p>—BOTTOM HOLE—
WOLFPACK B02-65-1HN
2340' FSL
660' FEL
LAT: 40.42757°N
LONG: 104.51032°W</p> | <p>⑥</p> <p>—BOTTOM HOLE—
LONEWOLF B02-65HC
2600' FSL
660' FEL
LAT: 40.42828°N
LONG: 104.51031°W</p> | <p>⑦</p> <p>—BOTTOM HOLE—
WOLFPACK B02-65HN
2600' FSL
660' FEL
LAT: 40.42828°N
LONG: 104.51031°W</p> | <p>⑧</p> <p>—BOTTOM HOLE—
WOLFPACK B02-66-1HN
2350' FNL
660' FEL
LAT: 40.42921°N
LONG: 104.51029°W</p> |



LEGEND

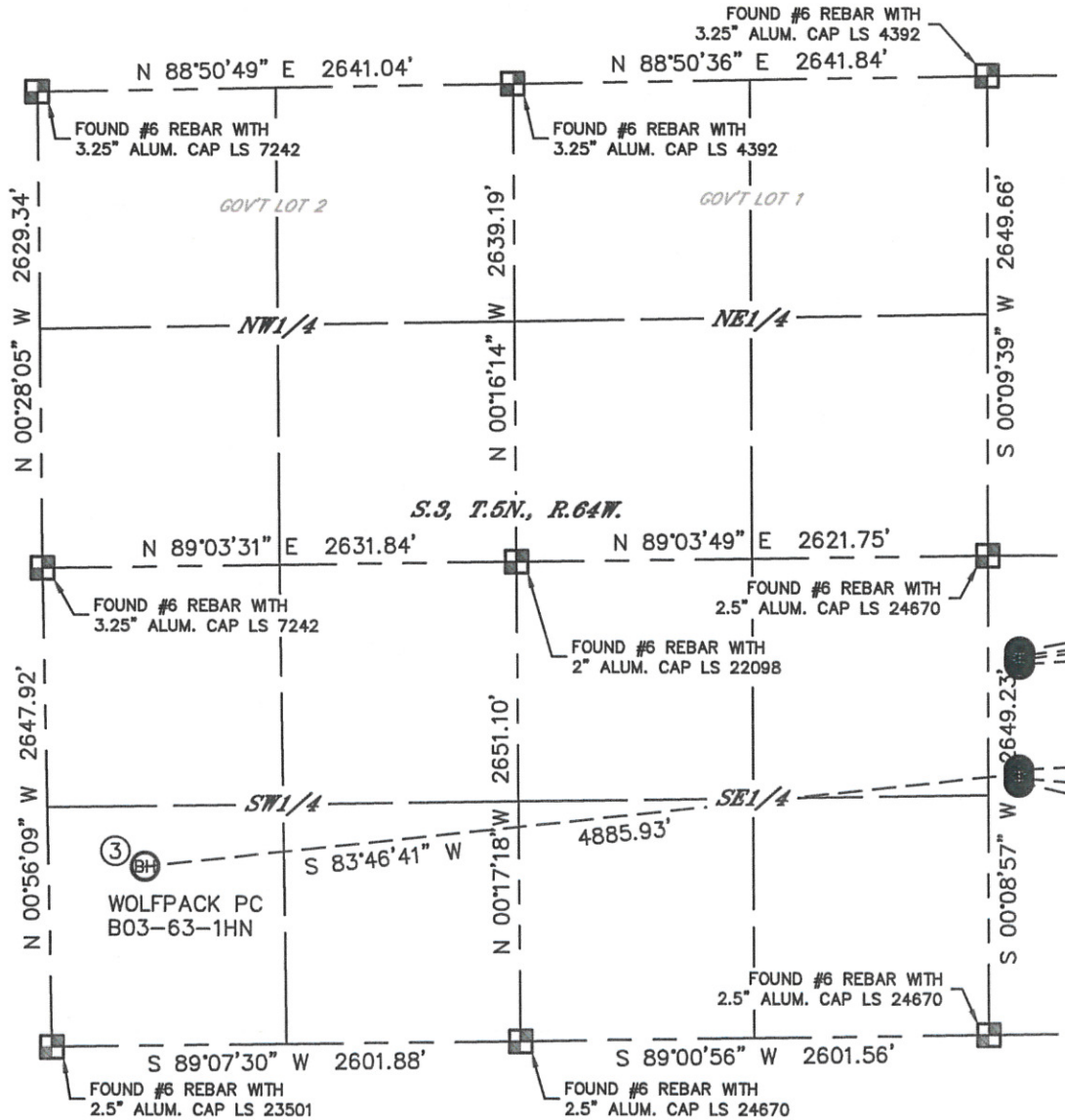
- = ALIQUOT MONUMENT AS DESCRIBED
 = CALCULATED POSITION

MULTI-WELL PLAN

WOLFPACK B02-62-1HN PAD



THIS MAP DOES NOT REPRESENT A BOUNDARY SURVEY

SECTION: 3
TOWNSHIP: 5N
RANGE: 64W



③
-BOTTOM HOLE-
WOLFPACK PC B03-63-1HN
990' FSL
535' FWL
LAT: 40.42372°N
LONG: 104.54382°W

LEGEND

-  = ALIQUOT MONUMENT AS DESCRIBED
-  = CALCULATED POSITION

