

# PETROLEUM DEVELOPMENT CORP Weld County CO

**Well Name: Maxey 24P-332**

Surface Location: Maxey 24Q-HZ Pad Sec.24-T5N-R65W  
North American Datum 1983 , US State Plane 1983 , Colorado Northern Zone

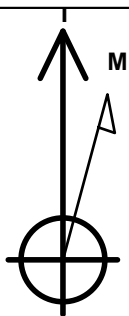
Ground Elevation: 4635.0

+N/-S	+E/-W	Northing	Easting	Latitude	Longitude	Slot
0.0	0.0	1381915.63	3247745.85	40.378350	-104.610730	

RKB - 15' WELL @ 4650.0ft (RKB - 15')

## WELLBORE TARGET DETAILS

Name	TVD	+N/-S	+E/-W	Shape Point
BHL 738'FSL & 2140'FWL, SEC.19	6770.0	372.0	4594.2	Point



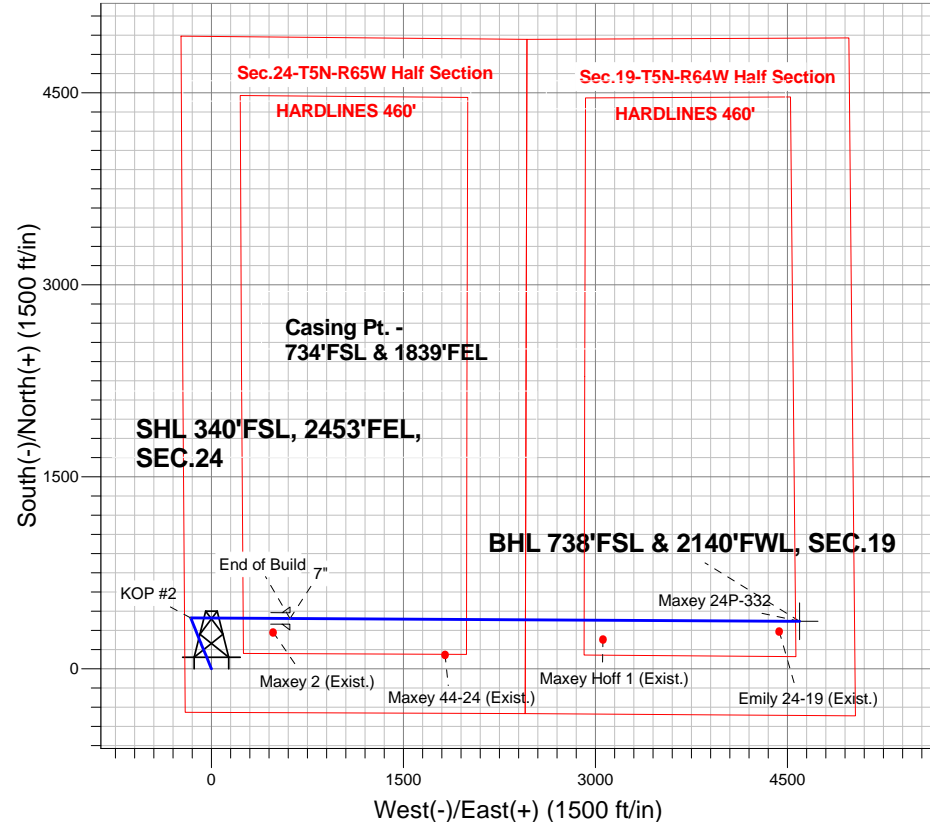
Azimuths to True North  
Magnetic North: 8.54°

Magnetic Field  
Strength: 52952.8nT  
Dip Angle: 67.00°  
Date: 3/18/2013  
Model: IGRF2010

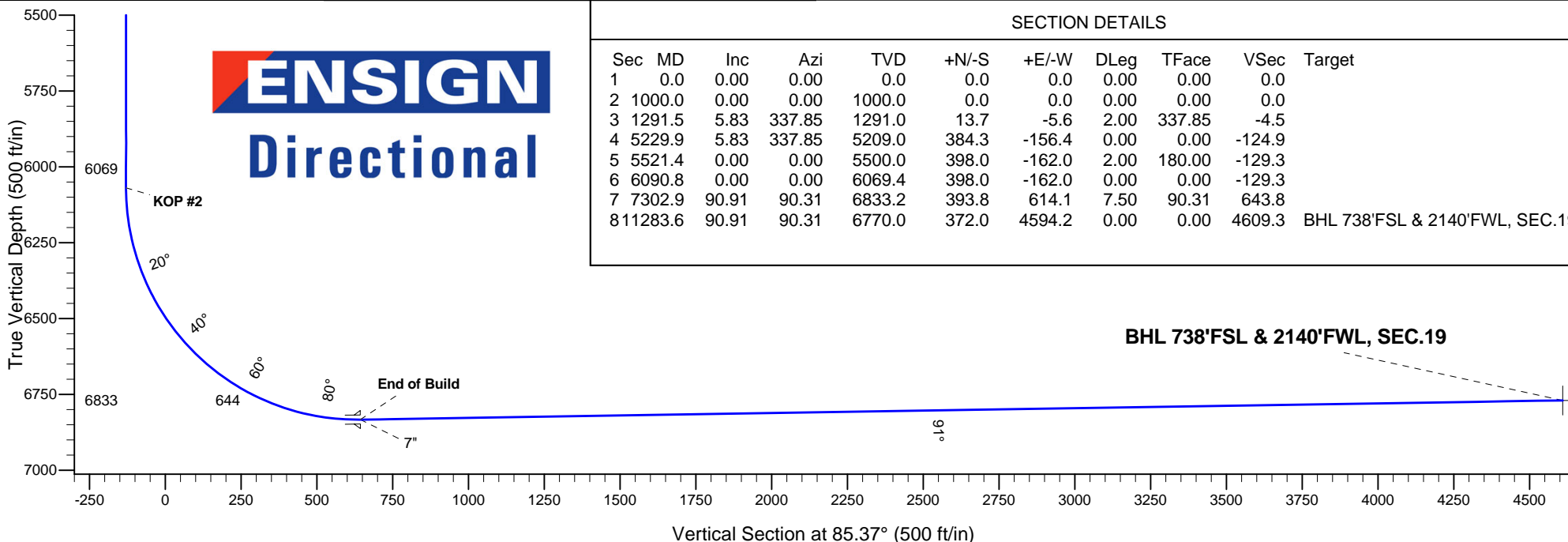
## ANNOTATIONS

TVD	MD	Annotation
1000.0	1000.0	KOP #1
6069.4	6090.8	KOP #2
6833.2	7302.9	End of Build

Maxey 24Q-HZ Pad Sec.24-T5N-R65W  
Maxey 24P-332  
Plan #1 (03-07-13)



**ENSIGN**  
**Directional**



## SECTION DETAILS

Sec	MD	Inc	Azi	TVD	+N/-S	+E/-W	DLeg	TFace	VSec	Target
1	0.0	0.00	0.00	0.0	0.0	0.0	0.00	0.00	0.0	
2	1000.0	0.00	0.00	1000.0	0.0	0.0	0.00	0.00	0.0	
3	1291.5	5.83	337.85	1291.0	13.7	-5.6	2.00	337.85	-4.5	
4	5229.9	5.83	337.85	5209.0	384.3	-156.4	0.00	0.00	-124.9	
5	5521.4	0.00	0.00	5500.0	398.0	-162.0	2.00	180.00	-129.3	
6	6090.8	0.00	0.00	6069.4	398.0	-162.0	0.00	0.00	-129.3	
7	7302.9	90.91	90.31	6833.2	393.8	614.1	7.50	90.31	643.8	
8	11283.6	90.91	90.31	6770.0	372.0	4594.2	0.00	0.00	4609.3	BHL 738'FSL & 2140'FWL, SEC.19



## **Directional**

# **PETROLEUM DEVELOPMENT CORP Weld County CO**

**SEC.24-T5N-R65W**

**Maxey 24Q-HZ Pad Sec.24-T5N-R65W**

**Maxey 24P-332**

**Wellbore #1**

**Plan: Plan #1 (03-07-13)**

## **Standard Planning Report**

**18 March, 2013**

<b>Database:</b>	Landmark	<b>Local Co-ordinate Reference:</b>	Well Maxey 24P-332
<b>Company:</b>	PETROLEUM DEVELOPMENT CORP Weld County CO	<b>TVD Reference:</b>	WELL @ 4650.0ft (Original Well Elev)
<b>Project:</b>	SEC.24-T5N-R65W	<b>MD Reference:</b>	WELL @ 4650.0ft (Original Well Elev)
<b>Site:</b>	Maxey 24Q-HZ Pad Sec.24-T5N-R65W	<b>North Reference:</b>	True
<b>Well:</b>	Maxey 24P-332	<b>Survey Calculation Method:</b>	Minimum Curvature
<b>Wellbore:</b>	Wellbore #1		
<b>Design:</b>	Plan #1 (03-07-13)		

<b>Project</b>	SEC.24-T5N-R65W, Weld County, Colorado		
<b>Map System:</b>	US State Plane 1983	<b>System Datum:</b>	Mean Sea Level
<b>Geo Datum:</b>	North American Datum 1983		Using Well Reference Point
<b>Map Zone:</b>	Colorado Northern Zone		Using geodetic scale factor

Site						Maxey 24Q-HZ Pad Sec.24-T5N-R65W											
Site Position:						Northing:			1,381,915.64 ft			Latitude:			40.378350		
From:			Lat/Long			Easting:			3,247,745.85 ft			Longitude:			-104.610730		
Position Uncertainty:			0.0 ft			Slot Radius:			"			Grid Convergence:			0.57 °		

Well	Maxey 24P-332					
Well Position	+N-S	0.0 ft	Northing:	1,381,915.63 ft	Latitude:	40.378350
	+E-W	0.0 ft	Easting:	3,247,745.85 ft	Longitude:	-104.610730
Position Uncertainty		0.0 ft	Wellhead Elevation:	ft	Ground Level:	4,635.0 ft

<b>Wellbore</b>	Wellbore #1				
<b>Magnetics</b>	<b>Model Name</b>	<b>Sample Date</b>	<b>Declination (°)</b>	<b>Dip Angle (°)</b>	<b>Field Strength (nT)</b>
	IGRF2010	3/18/2013	8.54	67.00	52,953

<b>Design</b>	Plan #1 (03-07-13)			
<b>Audit Notes:</b>				
<b>Version:</b>	<b>Phase:</b>	PROTOTYPE	<b>Tie On Depth:</b>	0.0
<b>Vertical Section:</b>	<b>Depth From (TVD) (ft)</b>	<b>+N/-S (ft)</b>	<b>+E/-W (ft)</b>	<b>Direction (°)</b>
	0.0	0.0	0.0	85.37

<b>Plan Sections</b>										
Measured Depth (ft)	Inclination (°)	Azimuth (°)	Vertical Depth (ft)	+N/-S (ft)	+E/-W (ft)	Dogleg Rate (°/100ft)	Build Rate (°/100ft)	Turn Rate (°/100ft)	TFO (°)	Target
0.0	0.00	0.00	0.0	0.0	0.0	0.00	0.00	0.00	0.00	
1,000.0	0.00	0.00	1,000.0	0.0	0.0	0.00	0.00	0.00	0.00	
1,291.5	5.83	337.85	1,291.0	13.7	-5.6	2.00	2.00	0.00	337.85	
5,229.9	5.83	337.85	5,209.0	384.3	-156.4	0.00	0.00	0.00	0.00	
5,521.4	0.00	0.00	5,500.0	398.0	-162.0	2.00	-2.00	0.00	180.00	
6,090.8	0.00	0.00	6,069.4	398.0	-162.0	0.00	0.00	0.00	0.00	
7,302.9	90.91	90.31	6,833.2	393.8	614.1	7.50	7.50	0.00	90.31	
11,283.6	90.91	90.31	6,770.0	372.0	4,594.2	0.00	0.00	0.00	0.00	BHL 738'FSL & 214

<b>Database:</b>	Landmark	<b>Local Co-ordinate Reference:</b>	Well Maxey 24P-332
<b>Company:</b>	PETROLEUM DEVELOPMENT CORP Weld County CO	<b>TVD Reference:</b>	WELL @ 4650.0ft (Original Well Elev)
<b>Project:</b>	SEC.24-T5N-R65W	<b>MD Reference:</b>	WELL @ 4650.0ft (Original Well Elev)
<b>Site:</b>	Maxey 24Q-HZ Pad Sec.24-T5N-R65W	<b>North Reference:</b>	True
<b>Well:</b>	Maxey 24P-332	<b>Survey Calculation Method:</b>	Minimum Curvature
<b>Wellbore:</b>	Wellbore #1		
<b>Design:</b>	Plan #1 (03-07-13)		

Planned Survey									
Measured Depth (ft)	Inclination (°)	Azimuth (°)	Vertical Depth (ft)	+N-S (ft)	+E-W (ft)	Vertical Section (ft)	Dogleg Rate (°/100ft)	Build Rate (°/100ft)	Turn Rate (°/100ft)
0.0	0.00	0.00	0.0	0.0	0.0	0.0	0.00	0.00	0.00
40.0	0.00	0.00	40.0	0.0	0.0	0.0	0.00	0.00	0.00
80.0	0.00	0.00	80.0	0.0	0.0	0.0	0.00	0.00	0.00
120.0	0.00	0.00	120.0	0.0	0.0	0.0	0.00	0.00	0.00
160.0	0.00	0.00	160.0	0.0	0.0	0.0	0.00	0.00	0.00
200.0	0.00	0.00	200.0	0.0	0.0	0.0	0.00	0.00	0.00
240.0	0.00	0.00	240.0	0.0	0.0	0.0	0.00	0.00	0.00
280.0	0.00	0.00	280.0	0.0	0.0	0.0	0.00	0.00	0.00
320.0	0.00	0.00	320.0	0.0	0.0	0.0	0.00	0.00	0.00
360.0	0.00	0.00	360.0	0.0	0.0	0.0	0.00	0.00	0.00
400.0	0.00	0.00	400.0	0.0	0.0	0.0	0.00	0.00	0.00
440.0	0.00	0.00	440.0	0.0	0.0	0.0	0.00	0.00	0.00
480.0	0.00	0.00	480.0	0.0	0.0	0.0	0.00	0.00	0.00
520.0	0.00	0.00	520.0	0.0	0.0	0.0	0.00	0.00	0.00
560.0	0.00	0.00	560.0	0.0	0.0	0.0	0.00	0.00	0.00
600.0	0.00	0.00	600.0	0.0	0.0	0.0	0.00	0.00	0.00
640.0	0.00	0.00	640.0	0.0	0.0	0.0	0.00	0.00	0.00
680.0	0.00	0.00	680.0	0.0	0.0	0.0	0.00	0.00	0.00
720.0	0.00	0.00	720.0	0.0	0.0	0.0	0.00	0.00	0.00
760.0	0.00	0.00	760.0	0.0	0.0	0.0	0.00	0.00	0.00
800.0	0.00	0.00	800.0	0.0	0.0	0.0	0.00	0.00	0.00
840.0	0.00	0.00	840.0	0.0	0.0	0.0	0.00	0.00	0.00
880.0	0.00	0.00	880.0	0.0	0.0	0.0	0.00	0.00	0.00
920.0	0.00	0.00	920.0	0.0	0.0	0.0	0.00	0.00	0.00
960.0	0.00	0.00	960.0	0.0	0.0	0.0	0.00	0.00	0.00
1,000.0	0.00	0.00	1,000.0	0.0	0.0	0.0	0.00	0.00	0.00
<b>KOP #1</b>									
1,040.0	0.80	337.85	1,040.0	0.3	-0.1	-0.1	2.00	2.00	0.00
1,080.0	1.60	337.85	1,080.0	1.0	-0.4	-0.3	2.00	2.00	0.00
1,120.0	2.40	337.85	1,120.0	2.3	-0.9	-0.8	2.00	2.00	0.00
1,160.0	3.20	337.85	1,159.9	4.1	-1.7	-1.3	2.00	2.00	0.00
1,200.0	4.00	337.85	1,199.8	6.5	-2.6	-2.1	2.00	2.00	0.00
1,240.0	4.80	337.85	1,239.7	9.3	-3.8	-3.0	2.00	2.00	0.00
1,280.0	5.60	337.85	1,279.6	12.7	-5.2	-4.1	2.00	2.00	0.00
1,291.5	5.83	337.85	1,291.0	13.7	-5.6	-4.5	2.00	2.00	0.00
1,320.0	5.83	337.85	1,319.3	16.4	-6.7	-5.3	0.00	0.00	0.00
1,360.0	5.83	337.85	1,359.1	20.2	-8.2	-6.6	0.00	0.00	0.00
1,400.0	5.83	337.85	1,398.9	23.9	-9.7	-7.8	0.00	0.00	0.00
1,440.0	5.83	337.85	1,438.7	27.7	-11.3	-9.0	0.00	0.00	0.00
1,480.0	5.83	337.85	1,478.5	31.5	-12.8	-10.2	0.00	0.00	0.00
1,520.0	5.83	337.85	1,518.3	35.2	-14.3	-11.4	0.00	0.00	0.00
1,560.0	5.83	337.85	1,558.1	39.0	-15.9	-12.7	0.00	0.00	0.00
1,600.0	5.83	337.85	1,597.9	42.8	-17.4	-13.9	0.00	0.00	0.00
1,640.0	5.83	337.85	1,637.7	46.5	-18.9	-15.1	0.00	0.00	0.00
1,680.0	5.83	337.85	1,677.5	50.3	-20.5	-16.3	0.00	0.00	0.00
1,720.0	5.83	337.85	1,717.3	54.0	-22.0	-17.6	0.00	0.00	0.00
1,760.0	5.83	337.85	1,757.1	57.8	-23.5	-18.8	0.00	0.00	0.00
1,800.0	5.83	337.85	1,796.9	61.6	-25.1	-20.0	0.00	0.00	0.00
1,840.0	5.83	337.85	1,836.7	65.3	-26.6	-21.2	0.00	0.00	0.00
1,880.0	5.83	337.85	1,876.5	69.1	-28.1	-22.5	0.00	0.00	0.00
1,920.0	5.83	337.85	1,916.2	72.9	-29.7	-23.7	0.00	0.00	0.00
1,960.0	5.83	337.85	1,956.0	76.6	-31.2	-24.9	0.00	0.00	0.00
2,000.0	5.83	337.85	1,995.8	80.4	-32.7	-26.1	0.00	0.00	0.00

<b>Database:</b>	Landmark	<b>Local Co-ordinate Reference:</b>	Well Maxey 24P-332
<b>Company:</b>	PETROLEUM DEVELOPMENT CORP Weld County CO	<b>TVD Reference:</b>	WELL @ 4650.0ft (Original Well Elev)
<b>Project:</b>	SEC.24-T5N-R65W	<b>MD Reference:</b>	WELL @ 4650.0ft (Original Well Elev)
<b>Site:</b>	Maxey 24Q-HZ Pad Sec.24-T5N-R65W	<b>North Reference:</b>	True
<b>Well:</b>	Maxey 24P-332	<b>Survey Calculation Method:</b>	Minimum Curvature
<b>Wellbore:</b>	Wellbore #1		
<b>Design:</b>	Plan #1 (03-07-13)		

Planned Survey										
Measured Depth (ft)	Inclination (°)	Azimuth (°)	Vertical Depth (ft)	+N/-S (ft)	+E/-W (ft)	Vertical Section (ft)	Dogleg Rate (°/100ft)	Build Rate (°/100ft)	Turn Rate (°/100ft)	
2,040.0	5.83	337.85	2,035.6	84.1	-34.3	-27.3	0.00	0.00	0.00	
2,080.0	5.83	337.85	2,075.4	87.9	-35.8	-28.6	0.00	0.00	0.00	
2,120.0	5.83	337.85	2,115.2	91.7	-37.3	-29.8	0.00	0.00	0.00	
2,160.0	5.83	337.85	2,155.0	95.4	-38.8	-31.0	0.00	0.00	0.00	
2,200.0	5.83	337.85	2,194.8	99.2	-40.4	-32.2	0.00	0.00	0.00	
2,240.0	5.83	337.85	2,234.6	103.0	-41.9	-33.5	0.00	0.00	0.00	
2,280.0	5.83	337.85	2,274.4	106.7	-43.4	-34.7	0.00	0.00	0.00	
2,320.0	5.83	337.85	2,314.2	110.5	-45.0	-35.9	0.00	0.00	0.00	
2,360.0	5.83	337.85	2,354.0	114.3	-46.5	-37.1	0.00	0.00	0.00	
2,400.0	5.83	337.85	2,393.8	118.0	-48.0	-38.4	0.00	0.00	0.00	
2,440.0	5.83	337.85	2,433.6	121.8	-49.6	-39.6	0.00	0.00	0.00	
2,480.0	5.83	337.85	2,473.3	125.5	-51.1	-40.8	0.00	0.00	0.00	
2,520.0	5.83	337.85	2,513.1	129.3	-52.6	-42.0	0.00	0.00	0.00	
2,560.0	5.83	337.85	2,552.9	133.1	-54.2	-43.2	0.00	0.00	0.00	
2,600.0	5.83	337.85	2,592.7	136.8	-55.7	-44.5	0.00	0.00	0.00	
2,640.0	5.83	337.85	2,632.5	140.6	-57.2	-45.7	0.00	0.00	0.00	
2,680.0	5.83	337.85	2,672.3	144.4	-58.8	-46.9	0.00	0.00	0.00	
2,720.0	5.83	337.85	2,712.1	148.1	-60.3	-48.1	0.00	0.00	0.00	
2,760.0	5.83	337.85	2,751.9	151.9	-61.8	-49.4	0.00	0.00	0.00	
2,800.0	5.83	337.85	2,791.7	155.7	-63.4	-50.6	0.00	0.00	0.00	
2,840.0	5.83	337.85	2,831.5	159.4	-64.9	-51.8	0.00	0.00	0.00	
2,880.0	5.83	337.85	2,871.3	163.2	-66.4	-53.0	0.00	0.00	0.00	
2,920.0	5.83	337.85	2,911.1	166.9	-68.0	-54.3	0.00	0.00	0.00	
2,960.0	5.83	337.85	2,950.9	170.7	-69.5	-55.5	0.00	0.00	0.00	
3,000.0	5.83	337.85	2,990.7	174.5	-71.0	-56.7	0.00	0.00	0.00	
3,040.0	5.83	337.85	3,030.5	178.2	-72.5	-57.9	0.00	0.00	0.00	
3,080.0	5.83	337.85	3,070.2	182.0	-74.1	-59.1	0.00	0.00	0.00	
3,120.0	5.83	337.85	3,110.0	185.8	-75.6	-60.4	0.00	0.00	0.00	
3,160.0	5.83	337.85	3,149.8	189.5	-77.1	-61.6	0.00	0.00	0.00	
3,200.0	5.83	337.85	3,189.6	193.3	-78.7	-62.8	0.00	0.00	0.00	
3,240.0	5.83	337.85	3,229.4	197.1	-80.2	-64.0	0.00	0.00	0.00	
3,280.0	5.83	337.85	3,269.2	200.8	-81.7	-65.3	0.00	0.00	0.00	
3,320.0	5.83	337.85	3,309.0	204.6	-83.3	-66.5	0.00	0.00	0.00	
3,360.0	5.83	337.85	3,348.8	208.3	-84.8	-67.7	0.00	0.00	0.00	
3,400.0	5.83	337.85	3,388.6	212.1	-86.3	-68.9	0.00	0.00	0.00	
3,440.0	5.83	337.85	3,428.4	215.9	-87.9	-70.2	0.00	0.00	0.00	
3,480.0	5.83	337.85	3,468.2	219.6	-89.4	-71.4	0.00	0.00	0.00	
3,520.0	5.83	337.85	3,508.0	223.4	-90.9	-72.6	0.00	0.00	0.00	
3,560.0	5.83	337.85	3,547.8	227.2	-92.5	-73.8	0.00	0.00	0.00	
3,600.0	5.83	337.85	3,587.6	230.9	-94.0	-75.0	0.00	0.00	0.00	
3,640.0	5.83	337.85	3,627.3	234.7	-95.5	-76.3	0.00	0.00	0.00	
3,680.0	5.83	337.85	3,667.1	238.5	-97.1	-77.5	0.00	0.00	0.00	
3,720.0	5.83	337.85	3,706.9	242.2	-98.6	-78.7	0.00	0.00	0.00	
3,760.0	5.83	337.85	3,746.7	246.0	-100.1	-79.9	0.00	0.00	0.00	
3,800.0	5.83	337.85	3,786.5	249.7	-101.7	-81.2	0.00	0.00	0.00	
3,840.0	5.83	337.85	3,826.3	253.5	-103.2	-82.4	0.00	0.00	0.00	
3,880.0	5.83	337.85	3,866.1	257.3	-104.7	-83.6	0.00	0.00	0.00	
3,920.0	5.83	337.85	3,905.9	261.0	-106.2	-84.8	0.00	0.00	0.00	
3,960.0	5.83	337.85	3,945.7	264.8	-107.8	-86.1	0.00	0.00	0.00	
4,000.0	5.83	337.85	3,985.5	268.6	-109.3	-87.3	0.00	0.00	0.00	
4,040.0	5.83	337.85	4,025.3	272.3	-110.8	-88.5	0.00	0.00	0.00	
4,080.0	5.83	337.85	4,065.1	276.1	-112.4	-89.7	0.00	0.00	0.00	
4,120.0	5.83	337.85	4,104.9	279.9	-113.9	-90.9	0.00	0.00	0.00	

<b>Database:</b>	Landmark	<b>Local Co-ordinate Reference:</b>	Well Maxey 24P-332
<b>Company:</b>	PETROLEUM DEVELOPMENT CORP Weld County CO	<b>TVD Reference:</b>	WELL @ 4650.0ft (Original Well Elev)
<b>Project:</b>	SEC.24-T5N-R65W	<b>MD Reference:</b>	WELL @ 4650.0ft (Original Well Elev)
<b>Site:</b>	Maxey 24Q-HZ Pad Sec.24-T5N-R65W	<b>North Reference:</b>	True
<b>Well:</b>	Maxey 24P-332	<b>Survey Calculation Method:</b>	Minimum Curvature
<b>Wellbore:</b>	Wellbore #1		
<b>Design:</b>	Plan #1 (03-07-13)		

Planned Survey									
Measured Depth (ft)	Inclination (°)	Azimuth (°)	Vertical Depth (ft)	+N/-S (ft)	+E/-W (ft)	Vertical Section (ft)	Dogleg Rate (°/100ft)	Build Rate (°/100ft)	Turn Rate (°/100ft)
4,160.0	5.83	337.85	4,144.7	283.6	-115.4	-92.2	0.00	0.00	0.00
4,200.0	5.83	337.85	4,184.5	287.4	-117.0	-93.4	0.00	0.00	0.00
4,240.0	5.83	337.85	4,224.2	291.1	-118.5	-94.6	0.00	0.00	0.00
4,280.0	5.83	337.85	4,264.0	294.9	-120.0	-95.8	0.00	0.00	0.00
4,320.0	5.83	337.85	4,303.8	298.7	-121.6	-97.1	0.00	0.00	0.00
4,360.0	5.83	337.85	4,343.6	302.4	-123.1	-98.3	0.00	0.00	0.00
4,400.0	5.83	337.85	4,383.4	306.2	-124.6	-99.5	0.00	0.00	0.00
4,440.0	5.83	337.85	4,423.2	310.0	-126.2	-100.7	0.00	0.00	0.00
4,480.0	5.83	337.85	4,463.0	313.7	-127.7	-102.0	0.00	0.00	0.00
4,520.0	5.83	337.85	4,502.8	317.5	-129.2	-103.2	0.00	0.00	0.00
4,560.0	5.83	337.85	4,542.6	321.2	-130.8	-104.4	0.00	0.00	0.00
4,600.0	5.83	337.85	4,582.4	325.0	-132.3	-105.6	0.00	0.00	0.00
4,640.0	5.83	337.85	4,622.2	328.8	-133.8	-106.8	0.00	0.00	0.00
4,680.0	5.83	337.85	4,662.0	332.5	-135.4	-108.1	0.00	0.00	0.00
4,720.0	5.83	337.85	4,701.8	336.3	-136.9	-109.3	0.00	0.00	0.00
4,760.0	5.83	337.85	4,741.6	340.1	-138.4	-110.5	0.00	0.00	0.00
4,800.0	5.83	337.85	4,781.3	343.8	-140.0	-111.7	0.00	0.00	0.00
4,840.0	5.83	337.85	4,821.1	347.6	-141.5	-113.0	0.00	0.00	0.00
4,880.0	5.83	337.85	4,860.9	351.4	-143.0	-114.2	0.00	0.00	0.00
4,920.0	5.83	337.85	4,900.7	355.1	-144.5	-115.4	0.00	0.00	0.00
4,960.0	5.83	337.85	4,940.5	358.9	-146.1	-116.6	0.00	0.00	0.00
5,000.0	5.83	337.85	4,980.3	362.6	-147.6	-117.9	0.00	0.00	0.00
5,040.0	5.83	337.85	5,020.1	366.4	-149.1	-119.1	0.00	0.00	0.00
5,080.0	5.83	337.85	5,059.9	370.2	-150.7	-120.3	0.00	0.00	0.00
5,120.0	5.83	337.85	5,099.7	373.9	-152.2	-121.5	0.00	0.00	0.00
5,160.0	5.83	337.85	5,139.5	377.7	-153.7	-122.7	0.00	0.00	0.00
5,200.0	5.83	337.85	5,179.3	381.5	-155.3	-124.0	0.00	0.00	0.00
5,229.9	5.83	337.85	5,209.0	384.3	-156.4	-124.9	0.00	0.00	0.00
5,240.0	5.63	337.85	5,219.1	385.2	-156.8	-125.2	2.00	-2.00	0.00
5,280.0	4.83	337.85	5,258.9	388.6	-158.2	-126.3	2.00	-2.00	0.00
5,320.0	4.03	337.85	5,298.8	391.4	-159.3	-127.2	2.00	-2.00	0.00
5,360.0	3.23	337.85	5,338.7	393.8	-160.3	-128.0	2.00	-2.00	0.00
5,400.0	2.43	337.85	5,378.7	395.6	-161.0	-128.6	2.00	-2.00	0.00
5,440.0	1.63	337.85	5,418.6	396.9	-161.6	-129.0	2.00	-2.00	0.00
5,480.0	0.83	337.85	5,458.6	397.7	-161.9	-129.3	2.00	-2.00	0.00
5,520.0	0.03	337.85	5,498.6	398.0	-162.0	-129.3	2.00	-2.00	0.00
5,521.4	0.00	0.00	5,500.0	398.0	-162.0	-129.3	2.00	-2.00	0.00
5,560.0	0.00	0.00	5,538.6	398.0	-162.0	-129.3	0.00	0.00	0.00
5,600.0	0.00	0.00	5,578.6	398.0	-162.0	-129.3	0.00	0.00	0.00
5,640.0	0.00	0.00	5,618.6	398.0	-162.0	-129.3	0.00	0.00	0.00
5,680.0	0.00	0.00	5,658.6	398.0	-162.0	-129.3	0.00	0.00	0.00
5,720.0	0.00	0.00	5,698.6	398.0	-162.0	-129.3	0.00	0.00	0.00
5,760.0	0.00	0.00	5,738.6	398.0	-162.0	-129.3	0.00	0.00	0.00
5,800.0	0.00	0.00	5,778.6	398.0	-162.0	-129.3	0.00	0.00	0.00
5,840.0	0.00	0.00	5,818.6	398.0	-162.0	-129.3	0.00	0.00	0.00
5,880.0	0.00	0.00	5,858.6	398.0	-162.0	-129.3	0.00	0.00	0.00
5,920.0	0.00	0.00	5,898.6	398.0	-162.0	-129.3	0.00	0.00	0.00
5,960.0	0.00	0.00	5,938.6	398.0	-162.0	-129.3	0.00	0.00	0.00
6,000.0	0.00	0.00	5,978.6	398.0	-162.0	-129.3	0.00	0.00	0.00
6,040.0	0.00	0.00	6,018.6	398.0	-162.0	-129.3	0.00	0.00	0.00
6,080.0	0.00	0.00	6,058.6	398.0	-162.0	-129.3	0.00	0.00	0.00
6,090.8	0.00	0.00	6,069.4	398.0	-162.0	-129.3	0.00	0.00	0.00
KOP #2									

<b>Database:</b>	Landmark	<b>Local Co-ordinate Reference:</b>	Well Maxey 24P-332
<b>Company:</b>	PETROLEUM DEVELOPMENT CORP Weld County CO	<b>TVD Reference:</b>	WELL @ 4650.0ft (Original Well Elev)
<b>Project:</b>	SEC.24-T5N-R65W	<b>MD Reference:</b>	WELL @ 4650.0ft (Original Well Elev)
<b>Site:</b>	Maxey 24Q-HZ Pad Sec.24-T5N-R65W	<b>North Reference:</b>	True
<b>Well:</b>	Maxey 24P-332	<b>Survey Calculation Method:</b>	Minimum Curvature
<b>Wellbore:</b>	Wellbore #1		
<b>Design:</b>	Plan #1 (03-07-13)		

Planned Survey									
Measured Depth (ft)	Inclination (°)	Azimuth (°)	Vertical Depth (ft)	+N/-S (ft)	+E/-W (ft)	Vertical Section (ft)	Dogleg Rate (°/100ft)	Build Rate (°/100ft)	Turn Rate (°/100ft)
6,120.0	2.19	90.31	6,098.6	398.0	-161.4	-128.8	7.51	7.51	0.00
6,160.0	5.19	90.31	6,138.5	398.0	-158.9	-126.2	7.50	7.50	0.00
6,200.0	8.19	90.31	6,178.2	398.0	-154.2	-121.6	7.50	7.50	0.00
6,240.0	11.19	90.31	6,217.7	397.9	-147.5	-114.9	7.50	7.50	0.00
6,280.0	14.19	90.31	6,256.7	397.9	-138.7	-106.1	7.50	7.50	0.00
6,320.0	17.19	90.31	6,295.2	397.8	-127.9	-95.3	7.50	7.50	0.00
6,360.0	20.19	90.31	6,333.1	397.7	-115.0	-82.6	7.50	7.50	0.00
6,400.0	23.19	90.31	6,370.2	397.7	-100.3	-67.8	7.50	7.50	0.00
6,440.0	26.19	90.31	6,406.6	397.6	-83.5	-51.2	7.50	7.50	0.00
6,480.0	29.19	90.31	6,442.0	397.5	-65.0	-32.7	7.50	7.50	0.00
6,520.0	32.19	90.31	6,476.4	397.4	-44.5	-12.3	7.50	7.50	0.00
6,560.0	35.19	90.31	6,509.7	397.2	-22.4	9.8	7.50	7.50	0.00
6,600.0	38.19	90.31	6,541.7	397.1	1.5	33.6	7.50	7.50	0.00
6,640.0	41.19	90.31	6,572.5	397.0	27.1	59.0	7.50	7.50	0.00
6,680.0	44.19	90.31	6,601.9	396.8	54.2	86.1	7.50	7.50	0.00
6,720.0	47.19	90.31	6,629.8	396.7	82.8	114.6	7.50	7.50	0.00
6,760.0	50.19	90.31	6,656.2	396.5	112.9	144.5	7.50	7.50	0.00
6,800.0	53.19	90.31	6,681.0	396.3	144.3	175.8	7.50	7.50	0.00
6,840.0	56.19	90.31	6,704.2	396.2	176.9	208.3	7.50	7.50	0.00
6,880.0	59.19	90.31	6,725.5	396.0	210.7	242.0	7.50	7.50	0.00
6,920.0	62.19	90.31	6,745.1	395.8	245.6	276.7	7.50	7.50	0.00
6,960.0	65.19	90.31	6,762.8	395.6	281.4	312.4	7.50	7.50	0.00
7,000.0	68.19	90.31	6,778.7	395.4	318.2	349.0	7.50	7.50	0.00
7,040.0	71.19	90.31	6,792.5	395.2	355.7	386.4	7.50	7.50	0.00
7,080.0	74.19	90.31	6,804.4	395.0	393.8	424.4	7.50	7.50	0.00
7,120.0	77.19	90.31	6,814.3	394.8	432.6	463.1	7.50	7.50	0.00
7,160.0	80.19	90.31	6,822.2	394.5	471.8	502.1	7.50	7.50	0.00
7,200.0	83.19	90.31	6,827.9	394.3	511.4	541.6	7.50	7.50	0.00
7,240.0	86.19	90.31	6,831.6	394.1	551.2	581.2	7.50	7.50	0.00
7,280.0	89.19	90.31	6,833.2	393.9	591.2	621.0	7.50	7.50	0.00
7,302.9	90.91	90.31	6,833.2	393.8	614.1	643.9	7.50	7.50	0.00
End of Build - 7"									
7,320.0	90.91	90.31	6,832.9	393.7	631.2	660.9	0.00	0.00	0.00
7,360.0	90.91	90.31	6,832.3	393.5	671.2	700.7	0.00	0.00	0.00
7,400.0	90.91	90.31	6,831.7	393.2	711.2	740.6	0.00	0.00	0.00
7,440.0	90.91	90.31	6,831.0	393.0	751.2	780.4	0.00	0.00	0.00
7,480.0	90.91	90.31	6,830.4	392.8	791.2	820.3	0.00	0.00	0.00
7,520.0	90.91	90.31	6,829.8	392.6	831.1	860.1	0.00	0.00	0.00
7,560.0	90.91	90.31	6,829.1	392.4	871.1	900.0	0.00	0.00	0.00
7,600.0	90.91	90.31	6,828.5	392.1	911.1	939.8	0.00	0.00	0.00
7,640.0	90.91	90.31	6,827.9	391.9	951.1	979.7	0.00	0.00	0.00
7,680.0	90.91	90.31	6,827.2	391.7	991.1	1,019.5	0.00	0.00	0.00
7,720.0	90.91	90.31	6,826.6	391.5	1,031.1	1,059.4	0.00	0.00	0.00
7,760.0	90.91	90.31	6,826.0	391.3	1,071.1	1,099.2	0.00	0.00	0.00
7,800.0	90.91	90.31	6,825.3	391.1	1,111.1	1,139.0	0.00	0.00	0.00
7,840.0	90.91	90.31	6,824.7	390.8	1,151.1	1,178.9	0.00	0.00	0.00
7,880.0	90.91	90.31	6,824.1	390.6	1,191.1	1,218.7	0.00	0.00	0.00
7,920.0	90.91	90.31	6,823.4	390.4	1,231.1	1,258.6	0.00	0.00	0.00
7,960.0	90.91	90.31	6,822.8	390.2	1,271.1	1,298.4	0.00	0.00	0.00
8,000.0	90.91	90.31	6,822.1	390.0	1,311.1	1,338.3	0.00	0.00	0.00
8,040.0	90.91	90.31	6,821.5	389.7	1,351.1	1,378.1	0.00	0.00	0.00
8,080.0	90.91	90.31	6,820.9	389.5	1,391.1	1,418.0	0.00	0.00	0.00
8,120.0	90.91	90.31	6,820.2	389.3	1,431.1	1,457.8	0.00	0.00	0.00



<b>Database:</b>	Landmark	<b>Local Co-ordinate Reference:</b>	Well Maxey 24P-332
<b>Company:</b>	PETROLEUM DEVELOPMENT CORP Weld County CO	<b>TVD Reference:</b>	WELL @ 4650.0ft (Original Well Elev)
<b>Project:</b>	SEC.24-T5N-R65W	<b>MD Reference:</b>	WELL @ 4650.0ft (Original Well Elev)
<b>Site:</b>	Maxey 24Q-HZ Pad Sec.24-T5N-R65W	<b>North Reference:</b>	True
<b>Well:</b>	Maxey 24P-332	<b>Survey Calculation Method:</b>	Minimum Curvature
<b>Wellbore:</b>	Wellbore #1		
<b>Design:</b>	Plan #1 (03-07-13)		

Planned Survey									
Measured Depth (ft)	Inclination (°)	Azimuth (°)	Vertical Depth (ft)	+N/-S (ft)	+E/-W (ft)	Vertical Section (ft)	Dogleg Rate (°/100ft)	Build Rate (°/100ft)	Turn Rate (°/100ft)
8,160.0	90.91	90.31	6,819.6	389.1	1,471.1	1,497.7	0.00	0.00	0.00
8,200.0	90.91	90.31	6,819.0	388.9	1,511.1	1,537.5	0.00	0.00	0.00
8,240.0	90.91	90.31	6,818.3	388.7	1,551.0	1,577.4	0.00	0.00	0.00
8,280.0	90.91	90.31	6,817.7	388.4	1,591.0	1,617.2	0.00	0.00	0.00
8,320.0	90.91	90.31	6,817.1	388.2	1,631.0	1,657.0	0.00	0.00	0.00
8,360.0	90.91	90.31	6,816.4	388.0	1,671.0	1,696.9	0.00	0.00	0.00
8,400.0	90.91	90.31	6,815.8	387.8	1,711.0	1,736.7	0.00	0.00	0.00
8,440.0	90.91	90.31	6,815.2	387.6	1,751.0	1,776.6	0.00	0.00	0.00
8,480.0	90.91	90.31	6,814.5	387.3	1,791.0	1,816.4	0.00	0.00	0.00
8,520.0	90.91	90.31	6,813.9	387.1	1,831.0	1,856.3	0.00	0.00	0.00
8,560.0	90.91	90.31	6,813.3	386.9	1,871.0	1,896.1	0.00	0.00	0.00
8,600.0	90.91	90.31	6,812.6	386.7	1,911.0	1,936.0	0.00	0.00	0.00
8,640.0	90.91	90.31	6,812.0	386.5	1,951.0	1,975.8	0.00	0.00	0.00
8,680.0	90.91	90.31	6,811.4	386.2	1,991.0	2,015.7	0.00	0.00	0.00
8,720.0	90.91	90.31	6,810.7	386.0	2,031.0	2,055.5	0.00	0.00	0.00
8,760.0	90.91	90.31	6,810.1	385.8	2,071.0	2,095.4	0.00	0.00	0.00
8,800.0	90.91	90.31	6,809.4	385.6	2,111.0	2,135.2	0.00	0.00	0.00
8,840.0	90.91	90.31	6,808.8	385.4	2,151.0	2,175.1	0.00	0.00	0.00
8,880.0	90.91	90.31	6,808.2	385.2	2,191.0	2,214.9	0.00	0.00	0.00
8,920.0	90.91	90.31	6,807.5	384.9	2,231.0	2,254.7	0.00	0.00	0.00
8,960.0	90.91	90.31	6,806.9	384.7	2,270.9	2,294.6	0.00	0.00	0.00
9,000.0	90.91	90.31	6,806.3	384.5	2,310.9	2,334.4	0.00	0.00	0.00
9,040.0	90.91	90.31	6,805.6	384.3	2,350.9	2,374.3	0.00	0.00	0.00
9,080.0	90.91	90.31	6,805.0	384.1	2,390.9	2,414.1	0.00	0.00	0.00
9,120.0	90.91	90.31	6,804.4	383.8	2,430.9	2,454.0	0.00	0.00	0.00
9,160.0	90.91	90.31	6,803.7	383.6	2,470.9	2,493.8	0.00	0.00	0.00
9,200.0	90.91	90.31	6,803.1	383.4	2,510.9	2,533.7	0.00	0.00	0.00
9,240.0	90.91	90.31	6,802.5	383.2	2,550.9	2,573.5	0.00	0.00	0.00
9,280.0	90.91	90.31	6,801.8	383.0	2,590.9	2,613.4	0.00	0.00	0.00
9,320.0	90.91	90.31	6,801.2	382.8	2,630.9	2,653.2	0.00	0.00	0.00
9,360.0	90.91	90.31	6,800.6	382.5	2,670.9	2,693.1	0.00	0.00	0.00
9,400.0	90.91	90.31	6,799.9	382.3	2,710.9	2,732.9	0.00	0.00	0.00
9,440.0	90.91	90.31	6,799.3	382.1	2,750.9	2,772.7	0.00	0.00	0.00
9,480.0	90.91	90.31	6,798.6	381.9	2,790.9	2,812.6	0.00	0.00	0.00
9,520.0	90.91	90.31	6,798.0	381.7	2,830.9	2,852.4	0.00	0.00	0.00
9,560.0	90.91	90.31	6,797.4	381.4	2,870.9	2,892.3	0.00	0.00	0.00
9,600.0	90.91	90.31	6,796.7	381.2	2,910.9	2,932.1	0.00	0.00	0.00
9,640.0	90.91	90.31	6,796.1	381.0	2,950.9	2,972.0	0.00	0.00	0.00
9,680.0	90.91	90.31	6,795.5	380.8	2,990.8	3,011.8	0.00	0.00	0.00
9,720.0	90.91	90.31	6,794.8	380.6	3,030.8	3,051.7	0.00	0.00	0.00
9,760.0	90.91	90.31	6,794.2	380.4	3,070.8	3,091.5	0.00	0.00	0.00
9,800.0	90.91	90.31	6,793.6	380.1	3,110.8	3,131.4	0.00	0.00	0.00
9,840.0	90.91	90.31	6,792.9	379.9	3,150.8	3,171.2	0.00	0.00	0.00
9,880.0	90.91	90.31	6,792.3	379.7	3,190.8	3,211.1	0.00	0.00	0.00
9,920.0	90.91	90.31	6,791.7	379.5	3,230.8	3,250.9	0.00	0.00	0.00
9,960.0	90.91	90.31	6,791.0	379.3	3,270.8	3,290.7	0.00	0.00	0.00
10,000.0	90.91	90.31	6,790.4	379.0	3,310.8	3,330.6	0.00	0.00	0.00
10,040.0	90.91	90.31	6,789.8	378.8	3,350.8	3,370.4	0.00	0.00	0.00
10,080.0	90.91	90.31	6,789.1	378.6	3,390.8	3,410.3	0.00	0.00	0.00
10,120.0	90.91	90.31	6,788.5	378.4	3,430.8	3,450.1	0.00	0.00	0.00
10,160.0	90.91	90.31	6,787.8	378.2	3,470.8	3,490.0	0.00	0.00	0.00
10,200.0	90.91	90.31	6,787.2	378.0	3,510.8	3,529.8	0.00	0.00	0.00
10,240.0	90.91	90.31	6,786.6	377.7	3,550.8	3,569.7	0.00	0.00	0.00



<b>Database:</b>	Landmark	<b>Local Co-ordinate Reference:</b>	Well Maxey 24P-332
<b>Company:</b>	PETROLEUM DEVELOPMENT CORP Weld County CO	<b>TVD Reference:</b>	WELL @ 4650.0ft (Original Well Elev)
<b>Project:</b>	SEC.24-T5N-R65W	<b>MD Reference:</b>	WELL @ 4650.0ft (Original Well Elev)
<b>Site:</b>	Maxey 24Q-HZ Pad Sec.24-T5N-R65W	<b>North Reference:</b>	True
<b>Well:</b>	Maxey 24P-332	<b>Survey Calculation Method:</b>	Minimum Curvature
<b>Wellbore:</b>	Wellbore #1		
<b>Design:</b>	Plan #1 (03-07-13)		

Planned Survey									
Measured Depth (ft)	Inclination (°)	Azimuth (°)	Vertical Depth (ft)	+N/-S (ft)	+E/-W (ft)	Vertical Section (ft)	Dogleg Rate (°/100ft)	Build Rate (°/100ft)	Turn Rate (°/100ft)
10,280.0	90.91	90.31	6,785.9	377.5	3,590.8	3,609.5	0.00	0.00	0.00
10,320.0	90.91	90.31	6,785.3	377.3	3,630.8	3,649.4	0.00	0.00	0.00
10,360.0	90.91	90.31	6,784.7	377.1	3,670.7	3,689.2	0.00	0.00	0.00
10,400.0	90.91	90.31	6,784.0	376.9	3,710.7	3,729.1	0.00	0.00	0.00
10,440.0	90.91	90.31	6,783.4	376.6	3,750.7	3,768.9	0.00	0.00	0.00
10,480.0	90.91	90.31	6,782.8	376.4	3,790.7	3,808.7	0.00	0.00	0.00
10,520.0	90.91	90.31	6,782.1	376.2	3,830.7	3,848.6	0.00	0.00	0.00
10,560.0	90.91	90.31	6,781.5	376.0	3,870.7	3,888.4	0.00	0.00	0.00
10,600.0	90.91	90.31	6,780.9	375.8	3,910.7	3,928.3	0.00	0.00	0.00
10,640.0	90.91	90.31	6,780.2	375.6	3,950.7	3,968.1	0.00	0.00	0.00
10,680.0	90.91	90.31	6,779.6	375.3	3,990.7	4,008.0	0.00	0.00	0.00
10,720.0	90.91	90.31	6,779.0	375.1	4,030.7	4,047.8	0.00	0.00	0.00
10,760.0	90.91	90.31	6,778.3	374.9	4,070.7	4,087.7	0.00	0.00	0.00
10,800.0	90.91	90.31	6,777.7	374.7	4,110.7	4,127.5	0.00	0.00	0.00
10,840.0	90.91	90.31	6,777.0	374.5	4,150.7	4,167.4	0.00	0.00	0.00
10,880.0	90.91	90.31	6,776.4	374.2	4,190.7	4,207.2	0.00	0.00	0.00
10,920.0	90.91	90.31	6,775.8	374.0	4,230.7	4,247.1	0.00	0.00	0.00
10,960.0	90.91	90.31	6,775.1	373.8	4,270.7	4,286.9	0.00	0.00	0.00
11,000.0	90.91	90.31	6,774.5	373.6	4,310.7	4,326.7	0.00	0.00	0.00
11,040.0	90.91	90.31	6,773.9	373.4	4,350.7	4,366.6	0.00	0.00	0.00
11,080.0	90.91	90.31	6,773.2	373.2	4,390.6	4,406.4	0.00	0.00	0.00
11,120.0	90.91	90.31	6,772.6	372.9	4,430.6	4,446.3	0.00	0.00	0.00
11,160.0	90.91	90.31	6,772.0	372.7	4,470.6	4,486.1	0.00	0.00	0.00
11,200.0	90.91	90.31	6,771.3	372.5	4,510.6	4,526.0	0.00	0.00	0.00
11,240.0	90.91	90.31	6,770.7	372.3	4,550.6	4,565.8	0.00	0.00	0.00
11,280.0	90.91	90.31	6,770.1	372.1	4,590.6	4,605.7	0.00	0.00	0.00
11,283.6	90.91	90.31	6,770.0	372.0	4,594.2	4,609.3	0.00	0.00	0.00

Casing Points				
Measured Depth (ft)	Vertical Depth (ft)	Name	Casing Diameter (")	Hole Diameter (")
7,302.9	6,833.2	7"	7	7-1/2

Plan Annotations				
Measured Depth (ft)	Vertical Depth (ft)	Local Coordinates		Comment
		+N/-S (ft)	+E/-W (ft)	
1,000.0	1,000.0	0.0	0.0	KOP #1
6,090.8	6,069.4	398.0	-162.0	KOP #2
7,302.9	6,833.2	393.8	614.1	End of Build



## **Directional**

# **PETROLEUM DEVELOPMENT CORP Weld County CO**

**SEC.24-T5N-R65W**

**Maxey 24Q-HZ Pad Sec.24-T5N-R65W**

**Maxey 24P-332**

**Wellbore #1**

**Plan #1 (03-07-13)**

## **Anticollision Report**

**18 March, 2013**



<b>Company:</b>	PETROLEUM DEVELOPMENT CORP Weld County CO	<b>Local Co-ordinate Reference:</b>	Well Maxey 24P-332
<b>Project:</b>	SEC.24-T5N-R65W	<b>TVD Reference:</b>	WELL @ 4650.0ft (Original Well Elev)
<b>Reference Site:</b>	Maxey 24Q-HZ Pad Sec.24-T5N-R65W	<b>MD Reference:</b>	WELL @ 4650.0ft (Original Well Elev)
<b>Site Error:</b>	0.0ft	<b>North Reference:</b>	True
<b>Reference Well:</b>	Maxey 24P-332	<b>Survey Calculation Method:</b>	Minimum Curvature
<b>Well Error:</b>	0.0ft	<b>Output errors are at</b>	2.00 sigma
<b>Reference Wellbore</b>	Wellbore #1	<b>Database:</b>	Landmark
<b>Reference Design:</b>	Plan #1 (03-07-13)	<b>Offset TVD Reference:</b>	Offset Datum

<b>Reference</b>	Plan #1 (03-07-13)		
<b>Filter type:</b>	NO GLOBAL FILTER: Using user defined selection & filtering criteria		
<b>Interpolation Method:</b>	MD Interval 100.0ft	<b>Error Model:</b>	ISCWSA
<b>Depth Range:</b>	Unlimited	<b>Scan Method:</b>	Closest Approach 3D
<b>Results Limited by:</b>	Maximum center-center distance of 1,000.0ft	<b>Error Surface:</b>	Elliptical Conic
<b>Warning Levels Evaluated at:</b>	2.00 Sigma		

<b>Survey Tool Program</b>	<b>Date</b> 3/18/2013			
<b>From (ft)</b>	<b>To (ft)</b>	<b>Survey (Wellbore)</b>	<b>Tool Name</b>	<b>Description</b>
0.0	11,283.6	Plan #1 (03-07-13) (Wellbore #1)	MWD	MWD - Standard

<b>Summary</b>						
<b>Site Name</b>	<b>Reference Measured Depth (ft)</b>	<b>Offset Measured Depth (ft)</b>	<b>Distance Between Centres (ft)</b>	<b>Distance Between Ellipses (ft)</b>	<b>Separation Factor</b>	<b>Warning</b>
<b>Offset Well - Wellbore - Design</b>						
Maxey 24Q-HZ Pad Sec.24-T5N-R65W						
Emily 24-19 (Exist.) - Wellbore #1 - Wellbore #1	11,125.2	6,751.5	77.4	-55.9	0.581	Level 1, CC, ES, SF
Maxey 2 (Exist.) - Wellbore #1 - Wellbore #1	7,170.9	6,808.9	106.7	78.0	3.726	CC, ES, SF
Maxey 24P-232 - Wellbore #1 - Plan #1 (3-07-13)	200.0	200.0	30.6	30.0	45.451	CC
Maxey 24P-232 - Wellbore #1 - Plan #1 (3-07-13)	300.0	299.8	31.0	29.9	27.591	ES
Maxey 24P-232 - Wellbore #1 - Plan #1 (3-07-13)	11,283.6	11,236.0	363.3	104.0	1.401	Level 3, SF
Maxey 24Q-112 - Wellbore #1 - Plan #1 (3-07-13)	1,000.0	1,000.0	30.6	26.4	7.176	CC, ES
Maxey 24Q-112 - Wellbore #1 - Plan #1 (3-07-13)	11,283.6	11,064.3	369.3	137.2	1.591	SF
Maxey 24Q-302 - Wellbore #1 - Plan #1 (3-07-13)	1,000.0	1,000.0	61.3	57.0	14.353	CC, ES
Maxey 24Q-302 - Wellbore #1 - Plan #1 (3-07-13)	11,283.6	11,271.0	659.4	400.0	2.542	SF
Maxey 44-24 (Exist.) - Wellbore #1 - Wellbore #1	8,515.4	6,796.0	274.1	212.7	4.461	CC, ES, SF
Maxey Hoff 1 (Exist.) - Wellbore #1 - Wellbore #1	9,749.1	6,775.4	147.1	51.9	1.546	CC, ES, SF

Offset Design												Offset Site Error:	0.0 ft
Survey Program: 7300-MWD												Offset Well Error:	0.0 ft
Reference		Offset		Semi Major Axis			Distance						
Measured Depth	Vertical Depth	Measured Depth	Vertical Depth	Reference	Offset	Highside Toolface	Offset Wellbore Centre		Between Centres	Between Ellipses	Minimum Separation	Separation Factor	Warning
(ft)	(ft)	(ft)	(ft)	(ft)	(ft)	(°)	+N/-S (ft)	+E/-W (ft)	(ft)	(ft)	(ft)		
10,200.0	6,787.2	6,766.2	6,766.2	100.1	7.6	100.75	295.5	4,435.4	928.3	822.1	106.19	8.742	
10,300.0	6,785.6	6,764.6	6,764.6	102.8	7.6	99.61	295.5	4,435.4	828.7	719.5	109.23	7.587	
10,400.0	6,784.0	6,763.0	6,763.0	105.6	7.6	98.46	295.5	4,435.4	729.2	617.0	112.25	6.497	
10,500.0	6,782.4	6,761.4	6,761.4	108.4	7.6	97.31	295.5	4,435.4	629.9	514.7	115.25	5.466	
10,600.0	6,780.9	6,759.9	6,759.9	111.2	7.6	96.15	295.5	4,435.4	530.8	412.6	118.23	4.490	
10,700.0	6,779.3	6,758.3	6,758.3	113.9	7.6	94.99	295.5	4,435.4	432.2	311.0	121.18	3.566	
10,800.0	6,777.7	6,756.7	6,756.7	116.7	7.6	93.82	295.5	4,435.4	334.3	210.2	124.09	2.694	
10,900.0	6,776.1	6,755.1	6,755.1	119.5	7.6	92.65	295.5	4,435.4	238.1	111.2	126.97	1.875	
11,000.0	6,774.5	6,753.5	6,753.5	122.3	7.6	91.47	295.5	4,435.4	147.2	17.4	129.81	1.134	Level 2
11,100.0	6,772.9	6,751.9	6,751.9	125.1	7.6	90.30	295.5	4,435.4	81.4	-51.2	132.61	0.614	Level 1
11,125.2	6,772.5	6,751.5	6,751.5	125.8	7.6	90.00	295.5	4,435.4	77.4	-55.9	133.30	0.581	Level 1, CC, ES, SF
11,200.0	6,771.3	6,750.3	6,750.3	127.9	7.6	89.12	295.5	4,435.4	107.6	-27.7	135.35	0.795	Level 1
11,283.6	6,770.0	6,749.0	6,749.0	130.2	7.6	88.14	295.5	4,435.4	176.3	38.7	137.61	1.281	Level 3

<b>Company:</b>	PETROLEUM DEVELOPMENT CORP Weld County CO	<b>Local Co-ordinate Reference:</b>	Well Maxey 24P-332
<b>Project:</b>	SEC.24-T5N-R65W	<b>TVD Reference:</b>	WELL @ 4650.0ft (Original Well Elev)
<b>Reference Site:</b>	Maxey 24Q-HZ Pad Sec.24-T5N-R65W	<b>MD Reference:</b>	WELL @ 4650.0ft (Original Well Elev)
<b>Site Error:</b>	0.0ft	<b>North Reference:</b>	True
<b>Reference Well:</b>	Maxey 24P-332	<b>Survey Calculation Method:</b>	Minimum Curvature
<b>Well Error:</b>	0.0ft	<b>Output errors are at</b>	2.00 sigma
<b>Reference Wellbore</b>	Wellbore #1	<b>Database:</b>	Landmark
<b>Reference Design:</b>	Plan #1 (03-07-13)	<b>Offset TVD Reference:</b>	Offset Datum

Offset Design													Offset Site Error:	0.0 ft
Survey Program: 7300-MWD													Offset Well Error:	0.0 ft
Reference	Offset	Semi Major Axis		Distance		Minimum		Separation		Warning				
Measured Depth (ft)	Vertical Depth (ft)	Measured Depth (ft)	Vertical Depth (ft)	Reference (ft)	Offset (ft)	Highside Toolface (°)	Offset Wellbore Centre +N/-S (ft)	Offset Wellbore Centre +E/-W (ft)	Between Centres (ft)	Between Ellipses (ft)	Minimum Separation (ft)	Separation Factor		
0.0	0.0	0.0	0.0	0.0	0.0	59.16	287.8	482.0	561.6					
100.0	100.0	85.0	85.0	0.1	0.1	59.16	287.8	482.0	561.4	561.2	0.21	2,697.599		
200.0	200.0	185.0	185.0	0.3	0.2	59.16	287.8	482.0	561.4	560.8	0.55	1,029.591		
300.0	300.0	285.0	285.0	0.6	0.3	59.16	287.8	482.0	561.4	560.5	0.88	636.206		
400.0	400.0	385.0	385.0	0.8	0.4	59.16	287.8	482.0	561.4	560.2	1.22	460.325		
500.0	500.0	485.0	485.0	1.0	0.5	59.16	287.8	482.0	561.4	559.8	1.56	360.628		
600.0	600.0	585.0	585.0	1.2	0.7	59.16	287.8	482.0	561.4	559.5	1.89	296.428		
700.0	700.0	685.0	685.0	1.5	0.8	59.16	287.8	482.0	561.4	559.2	2.23	251.632		
800.0	800.0	785.0	785.0	1.7	0.9	59.16	287.8	482.0	561.4	558.8	2.57	218.598		
900.0	900.0	885.0	885.0	1.9	1.0	59.16	287.8	482.0	561.4	558.5	2.91	193.230		
1,000.0	1,000.0	985.0	985.0	2.1	1.1	59.16	287.8	482.0	561.4	558.1	3.24	173.138		
1,100.0	1,100.0	1,085.0	1,085.0	2.4	1.2	81.49	287.8	482.0	561.1	557.5	3.58	156.824		
1,200.0	1,199.8	1,184.8	1,184.8	2.6	1.3	82.03	287.8	482.0	560.4	556.5	3.91	143.170		
1,300.0	1,299.5	1,284.5	1,284.5	2.8	1.4	82.93	287.8	482.0	559.2	555.0	4.26	131.365		
1,400.0	1,398.9	1,383.9	1,383.9	3.1	1.6	83.96	287.8	482.0	558.1	553.5	4.61	121.041		
1,500.0	1,498.4	1,483.4	1,483.4	3.3	1.7	84.99	287.8	482.0	557.1	552.1	4.97	112.046		
1,600.0	1,597.9	1,582.9	1,582.9	3.6	1.8	86.03	287.8	482.0	556.3	550.9	5.34	104.183		
1,700.0	1,697.4	1,682.4	1,682.4	3.8	1.9	87.07	287.8	482.0	555.7	550.0	5.71	97.280		
1,800.0	1,796.9	1,781.9	1,781.9	4.1	2.0	88.11	287.8	482.0	555.2	549.2	6.09	91.194		
1,900.0	1,896.3	1,881.3	1,881.3	4.4	2.1	89.15	287.8	482.0	555.0	548.5	6.47	85.803		
1,981.1	1,977.0	1,962.0	1,962.0	4.6	2.2	90.00	287.8	482.0	554.9	548.2	6.78	81.869		
2,000.0	1,995.8	1,980.8	1,980.8	4.6	2.2	90.20	287.8	482.0	554.9	548.1	6.85	81.006		
2,100.0	2,095.3	2,080.3	2,080.3	4.9	2.3	91.24	287.8	482.0	555.1	547.8	7.23	76.721		
2,200.0	2,194.8	2,179.8	2,179.8	5.2	2.4	92.28	287.8	482.0	555.4	547.8	7.62	72.878		
2,300.0	2,294.3	2,279.3	2,279.3	5.5	2.6	93.32	287.8	482.0	555.9	547.9	8.01	69.418		
2,400.0	2,393.8	2,378.8	2,378.8	5.7	2.7	94.36	287.8	482.0	556.6	548.2	8.40	66.292		
2,500.0	2,493.2	2,478.2	2,478.2	6.0	2.8	95.40	287.8	482.0	557.4	548.6	8.78	63.458		
2,600.0	2,592.7	2,577.7	2,577.7	6.3	2.9	96.43	287.8	482.0	558.5	549.3	9.17	60.882		
2,700.0	2,692.2	2,677.2	2,677.2	6.6	3.0	97.46	287.8	482.0	559.7	550.2	9.56	58.534		
2,800.0	2,791.7	2,776.7	2,776.7	6.9	3.1	98.48	287.8	482.0	561.1	551.2	9.95	56.388		
2,900.0	2,891.2	2,876.2	2,876.2	7.1	3.2	99.50	287.8	482.0	562.7	552.4	10.34	54.422		
3,000.0	2,990.7	2,975.7	2,975.7	7.4	3.3	100.51	287.8	482.0	564.5	553.8	10.73	52.616		
3,100.0	3,090.1	3,075.1	3,075.1	7.7	3.5	101.52	287.8	482.0	566.5	555.3	11.12	50.955		
3,200.0	3,189.6	3,174.6	3,174.6	8.0	3.6	102.51	287.8	482.0	568.6	557.1	11.50	49.424		
3,300.0	3,289.1	3,274.1	3,274.1	8.3	3.7	103.51	287.8	482.0	570.9	559.0	11.89	48.010		
3,400.0	3,388.6	3,373.6	3,373.6	8.6	3.8	104.49	287.8	482.0	573.3	561.1	12.28	46.701		
3,500.0	3,488.1	3,473.1	3,473.1	8.8	3.9	105.46	287.8	482.0	576.0	563.3	12.66	45.489		
3,600.0	3,587.6	3,572.6	3,572.6	9.1	4.0	106.43	287.8	482.0	578.8	565.7	13.05	44.365		
3,700.0	3,687.0	3,672.0	3,672.0	9.4	4.1	107.38	287.8	482.0	581.8	568.3	13.43	43.320		
3,800.0	3,786.5	3,771.5	3,771.5	9.7	4.2	108.33	287.8	482.0	584.9	571.1	13.81	42.348		
3,900.0	3,886.0	3,871.0	3,871.0	10.0	4.4	109.26	287.8	482.0	588.2	574.0	14.19	41.443		
4,000.0	3,985.5	3,970.5	3,970.5	10.3	4.5	110.19	287.8	482.0	591.6	577.0	14.57	40.600		
4,100.0	4,085.0	4,070.0	4,070.0	10.6	4.6	111.10	287.8	482.0	595.2	580.3	14.95	39.812		
4,200.0	4,184.5	4,169.5	4,169.5	10.9	4.7	112.00	287.8	482.0	599.0	583.6	15.33	39.076		
4,300.0	4,283.9	4,268.9	4,268.9	11.1	4.8	112.89	287.8	482.0	602.9	587.2	15.70	38.388		
4,400.0	4,383.4	4,368.4	4,368.4	11.4	4.9	113.77	287.8	482.0	606.9	590.8	16.08	37.744		
4,500.0	4,482.9	4,467.9	4,467.9	11.7	5.0	114.64	287.8	482.0	611.1	594.6	16.45	37.141		
4,600.0	4,582.4	4,567.4	4,567.4	12.0	5.1	115.50	287.8	482.0	615.4	598.6	16.83	36.576		
4,700.0	4,681.9	4,666.9	4,666.9	12.3	5.2	116.34	287.8	482.0	619.9	602.7	17.20	36.045		
4,800.0	4,781.3	4,766.3	4,766.3	12.6	5.4	117.17	287.8	482.0	624.5	606.9	17.57	35.548		
4,900.0	4,880.8	4,865.8	4,865.8	12.9	5.5	117.99	287.8	482.0	629.2	611.2	17.94	35.080		

CC - Min centre to center distance or convergent point, SF - min separation factor, ES - min ellipse separation

<b>Company:</b>	PETROLEUM DEVELOPMENT CORP Weld County CO	<b>Local Co-ordinate Reference:</b>	Well Maxey 24P-332
<b>Project:</b>	SEC.24-T5N-R65W	<b>TVD Reference:</b>	WELL @ 4650.0ft (Original Well Elev)
<b>Reference Site:</b>	Maxey 24Q-HZ Pad Sec.24-T5N-R65W	<b>MD Reference:</b>	WELL @ 4650.0ft (Original Well Elev)
<b>Site Error:</b>	0.0ft	<b>North Reference:</b>	True
<b>Reference Well:</b>	Maxey 24P-332	<b>Survey Calculation Method:</b>	Minimum Curvature
<b>Well Error:</b>	0.0ft	<b>Output errors are at</b>	2.00 sigma
<b>Reference Wellbore</b>	Wellbore #1	<b>Database:</b>	Landmark
<b>Reference Design:</b>	Plan #1 (03-07-13)	<b>Offset TVD Reference:</b>	Offset Datum

<b>Offset Design</b> Maxey 24Q-HZ Pad Sec.24-T5N-R65W - Maxey 2 (Exist.) - Wellbore #1 - Wellbore #1												<b>Offset Site Error:</b>	0.0 ft
Survey Program: 7300-MWD												<b>Offset Well Error:</b>	0.0 ft
Reference	Offset	Semi Major Axis		Distance		Warning							
Measured Depth (ft)	Vertical Depth (ft)	Measured Depth (ft)	Vertical Depth (ft)	Reference (ft)	Offset (ft)	Highside Toolface (°)	Offset Wellbore Centre +N/-S (ft)	Offset Wellbore Centre +E/-W (ft)	Between Centres (ft)	Between Ellipses (ft)	Minimum Separation (ft)	Separation Factor	
5,000.0	4,980.3	4,965.3	4,965.3	13.2	5.6	118.80	287.8	482.0	634.0	615.7	18.30	34.640	
5,100.0	5,079.8	5,064.8	5,064.8	13.5	5.7	119.60	287.8	482.0	639.0	620.3	18.67	34.227	
5,200.0	5,179.3	5,164.3	5,164.3	13.7	5.8	120.38	287.8	482.0	644.1	625.1	19.04	33.838	
5,300.0	5,278.8	5,263.8	5,263.8	14.0	5.9	121.14	287.8	482.0	648.9	629.5	19.38	33.490	
5,400.0	5,378.7	5,363.7	5,363.7	14.2	6.0	121.64	287.8	482.0	652.0	632.3	19.66	33.159	
5,500.0	5,478.6	5,463.6	5,463.6	14.4	6.1	121.85	287.8	482.0	653.3	633.4	19.93	32.775	
5,600.0	5,578.6	5,563.6	5,563.6	14.5	6.3	99.71	287.8	482.0	653.3	633.9	19.48	33.539	
5,700.0	5,678.6	5,663.6	5,663.6	14.7	6.4	99.71	287.8	482.0	653.3	633.5	19.80	32.998	
5,800.0	5,778.6	5,763.6	5,763.6	14.9	6.5	99.71	287.8	482.0	653.3	633.2	20.12	32.472	
5,900.0	5,878.6	5,863.6	5,863.6	15.1	6.6	99.71	287.8	482.0	653.3	632.9	20.44	31.963	
6,000.0	5,978.6	5,963.6	5,963.6	15.3	6.7	99.71	287.8	482.0	653.3	632.6	20.76	31.468	
6,100.0	6,078.6	6,063.6	6,063.6	15.5	6.8	9.40	287.8	482.0	653.3	631.6	21.74	30.050	
6,200.0	6,178.2	6,163.2	6,163.2	15.6	6.9	9.61	287.8	482.0	645.7	623.8	21.85	29.554	
6,300.0	6,276.0	6,261.0	6,261.0	15.7	7.0	10.19	287.8	482.0	625.3	603.5	21.74	28.764	
6,400.0	6,370.2	6,355.2	6,355.2	15.8	7.1	11.26	287.8	482.0	592.5	571.1	21.43	27.655	
6,500.0	6,459.3	6,444.3	6,444.3	15.9	7.2	12.99	287.8	482.0	548.0	527.1	20.94	26.172	
6,600.0	6,541.7	6,526.7	6,526.7	16.0	7.3	15.76	287.8	482.0	492.7	472.4	20.34	24.219	
6,700.0	6,616.1	6,601.1	6,601.1	16.1	7.4	20.24	287.8	482.0	427.8	408.0	19.79	21.619	
6,800.0	6,681.0	6,666.0	6,666.0	16.3	7.5	27.75	287.8	482.0	354.7	335.1	19.64	18.065	
6,900.0	6,735.5	6,720.5	6,720.5	17.2	7.6	40.56	287.8	482.0	276.0	255.3	20.74	13.306	
7,000.0	6,778.7	6,763.7	6,763.7	18.4	7.6	60.20	287.8	482.0	196.0	172.2	23.78	8.242	
7,100.0	6,809.6	6,794.6	6,794.6	19.9	7.6	80.86	287.8	482.0	127.3	100.2	27.02	4.709	
7,170.9	6,823.9	6,808.9	6,808.9	21.2	7.7	90.00	287.8	482.0	106.7	78.0	28.63	3.726 CC, ES, SF	
7,200.0	6,827.9	6,812.9	6,812.9	21.8	7.7	91.83	287.8	482.0	110.5	81.3	29.18	3.786	
7,300.0	6,833.3	6,818.3	6,818.3	23.7	7.7	89.16	287.8	482.0	167.1	135.9	31.15	5.364	
7,400.0	6,831.7	6,816.7	6,816.7	25.9	7.7	88.05	287.8	482.0	252.3	219.0	33.25	7.588	
7,500.0	6,830.1	6,815.1	6,815.1	28.1	7.7	87.20	287.8	482.0	345.5	310.0	35.46	9.741	
7,600.0	6,828.5	6,813.5	6,813.5	30.5	7.7	86.35	287.8	482.0	441.6	403.9	37.77	11.694	
7,700.0	6,826.9	6,811.9	6,811.9	32.9	7.7	85.50	287.8	482.0	539.2	499.1	40.13	13.436	
7,800.0	6,825.3	6,810.3	6,810.3	35.3	7.7	84.65	287.8	482.0	637.5	595.0	42.54	14.985	
7,900.0	6,823.7	6,808.7	6,808.7	37.8	7.7	83.81	287.8	482.0	736.3	691.3	44.99	16.366	
8,000.0	6,822.1	6,807.1	6,807.1	40.4	7.7	82.97	287.8	482.0	835.4	787.9	47.46	17.602	
8,100.0	6,820.6	6,805.6	6,805.6	43.0	7.6	82.13	287.8	482.0	934.6	884.7	49.94	18.714	

<b>Company:</b>	PETROLEUM DEVELOPMENT CORP Weld County CO	<b>Local Co-ordinate Reference:</b>	Well Maxey 24P-332
<b>Project:</b>	SEC.24-T5N-R65W	<b>TVD Reference:</b>	WELL @ 4650.0ft (Original Well Elev)
<b>Reference Site:</b>	Maxey 24Q-HZ Pad Sec.24-T5N-R65W	<b>MD Reference:</b>	WELL @ 4650.0ft (Original Well Elev)
<b>Site Error:</b>	0.0ft	<b>North Reference:</b>	True
<b>Reference Well:</b>	Maxey 24P-332	<b>Survey Calculation Method:</b>	Minimum Curvature
<b>Well Error:</b>	0.0ft	<b>Output errors are at</b>	2.00 sigma
<b>Reference Wellbore</b>	Wellbore #1	<b>Database:</b>	Landmark
<b>Reference Design:</b>	Plan #1 (03-07-13)	<b>Offset TVD Reference:</b>	Offset Datum

Offset Design Maxey 24Q-HZ Pad Sec.24-T5N-R65W - Maxey 24P-232 - Wellbore #1 - Plan #1 (3-07-13)													Offset Site Error:	0.0 ft
Survey Program: 0-MWD													Offset Well Error:	0.0 ft
Measured Depth (ft)	Vertical Depth (ft)	Measured Depth (ft)	Vertical Depth (ft)	Reference	Offset	Semi Major Axis	Highside Toolface (°)	Offset Wellbore Centre +N/-S (ft)	Offset Wellbore Centre +E/-W (ft)	Between Centres (ft)	Between Ellipses (ft)	Minimum Separation (ft)	Separation Factor	Warning
0.0	0.0	0.0	0.0	0.0	0.0	-90.05	-90.05	0.0	-30.6	30.6				
100.0	100.0	100.0	100.0	0.1	0.1	-90.05	-90.05	0.0	-30.6	30.6	30.4	0.22	136.352	
200.0	200.0	200.0	200.0	0.3	0.3	-90.05	-90.05	0.0	-30.6	30.6	30.0	0.67	45.451 CC	
300.0	300.0	299.8	299.7	0.6	0.6	-86.89	-86.89	1.7	-31.0	31.0	29.9	1.12	27.591 ES	
400.0	400.0	399.3	399.1	0.8	0.8	-77.98	-77.98	6.8	-31.9	32.6	31.0	1.58	20.630	
500.0	500.0	498.3	497.8	1.0	1.0	-65.49	-65.49	15.2	-33.4	36.8	34.8	2.05	17.974	
600.0	600.0	596.7	595.4	1.2	1.3	-52.84	-52.84	26.9	-35.6	44.9	42.3	2.52	17.822	
700.0	700.0	694.8	692.4	1.5	1.6	-42.58	-42.58	41.6	-38.2	57.0	54.0	2.99	19.092	
800.0	800.0	793.6	789.9	1.7	2.0	-35.80	-35.80	56.8	-41.0	70.8	67.4	3.44	20.586	
900.0	900.0	892.3	887.5	1.9	2.3	-31.27	-31.27	72.1	-43.8	85.3	81.4	3.90	21.872	
1,000.0	1,000.0	991.1	985.0	2.1	2.7	-28.06	-28.06	87.3	-46.6	100.1	95.7	4.36	22.943	
1,100.0	1,100.0	1,090.1	1,082.8	2.4	3.0	-3.56	-3.56	102.6	-49.3	113.4	108.6	4.85	23.378	
1,200.0	1,199.8	1,189.5	1,181.0	2.6	3.4	-1.77	-1.77	118.0	-52.1	123.5	118.2	5.31	23.244	
1,300.0	1,299.5	1,289.2	1,279.5	2.8	3.7	-0.26	-0.26	133.4	-54.9	130.1	124.4	5.77	22.546	
1,400.0	1,398.9	1,389.1	1,378.0	3.1	4.1	1.11	1.11	148.8	-57.7	135.4	129.2	6.24	21.691	
1,500.0	1,498.4	1,488.9	1,476.6	3.3	4.4	2.38	2.38	164.2	-60.5	140.8	134.0	6.71	20.963	
1,600.0	1,597.9	1,588.7	1,575.2	3.6	4.8	3.55	3.55	179.6	-63.4	146.2	139.0	7.19	20.335	
1,700.0	1,697.4	1,688.5	1,673.8	3.8	5.2	4.64	4.64	195.0	-66.2	151.6	144.0	7.66	19.788	
1,800.0	1,796.9	1,788.3	1,772.3	4.1	5.5	5.66	5.66	210.5	-69.0	157.2	149.0	8.14	19.307	
1,900.0	1,896.3	1,888.1	1,870.9	4.4	5.9	6.60	6.60	225.9	-71.8	162.7	154.1	8.62	18.881	
2,000.0	1,995.8	1,987.9	1,969.5	4.6	6.2	7.48	7.48	241.3	-74.6	168.3	159.2	9.10	18.502	
2,100.0	2,095.3	2,087.7	2,068.1	4.9	6.6	8.31	8.31	256.7	-77.4	174.0	164.4	9.58	18.161	
2,200.0	2,194.8	2,187.5	2,166.6	5.2	7.0	9.08	9.08	272.1	-80.2	179.7	169.6	10.06	17.854	
2,300.0	2,294.3	2,287.3	2,265.2	5.5	7.3	9.81	9.81	287.5	-83.0	185.4	174.8	10.55	17.575	
2,400.0	2,393.8	2,387.2	2,363.8	5.7	7.7	10.49	10.49	302.9	-85.8	191.1	180.1	11.03	17.321	
2,500.0	2,493.2	2,487.0	2,462.3	6.0	8.1	11.13	11.13	318.4	-88.6	196.9	185.3	11.52	17.089	
2,600.0	2,592.7	2,586.8	2,560.9	6.3	8.4	11.74	11.74	333.8	-91.4	202.7	190.6	12.01	16.875	
2,700.0	2,692.2	2,686.6	2,659.5	6.6	8.8	12.31	12.31	349.2	-94.2	208.5	196.0	12.50	16.678	
2,800.0	2,791.7	2,786.4	2,758.1	6.9	9.2	12.85	12.85	364.6	-97.0	214.3	201.3	12.99	16.496	
2,900.0	2,891.2	2,886.2	2,856.6	7.1	9.5	13.36	13.36	380.0	-99.8	220.1	206.7	13.48	16.327	
3,000.0	2,990.7	2,986.0	2,955.2	7.4	9.9	13.85	13.85	395.4	-102.6	226.0	212.0	13.98	16.170	
3,100.0	3,090.1	3,085.8	3,053.8	7.7	10.2	14.31	14.31	410.8	-105.4	231.9	217.4	14.47	16.024	
3,200.0	3,189.6	3,185.6	3,152.4	8.0	10.6	14.75	14.75	426.3	-108.3	237.8	222.8	14.97	15.887	
3,300.0	3,289.1	3,285.4	3,250.9	8.3	11.0	15.17	15.17	441.7	-111.1	243.7	228.2	15.46	15.758	
3,400.0	3,388.6	3,385.3	3,349.5	8.6	11.3	15.56	15.56	457.1	-113.9	249.6	233.6	15.96	15.638	
3,500.0	3,488.1	3,485.1	3,448.1	8.8	11.7	15.94	15.94	472.5	-116.7	255.5	239.1	16.46	15.524	
3,600.0	3,587.6	3,584.9	3,546.6	9.1	12.1	16.31	16.31	487.9	-119.5	261.5	244.5	16.96	15.418	
3,700.0	3,687.0	3,684.7	3,645.2	9.4	12.4	16.65	16.65	503.3	-122.3	267.4	250.0	17.46	15.317	
3,800.0	3,786.5	3,784.5	3,743.8	9.7	12.8	16.98	16.98	518.7	-125.1	273.4	255.4	17.96	15.221	
3,900.0	3,886.0	3,884.3	3,842.4	10.0	13.2	17.30	17.30	534.1	-127.9	279.3	260.9	18.46	15.131	
4,000.0	3,985.5	3,984.1	3,940.9	10.3	13.5	17.60	17.60	549.6	-130.7	285.3	266.3	18.96	15.045	
4,100.0	4,085.0	4,083.9	4,039.5	10.6	13.9	17.89	17.89	565.0	-133.5	291.3	271.8	19.47	14.964	
4,200.0	4,184.5	4,183.7	4,138.1	10.9	14.3	18.17	18.17	580.4	-136.3	297.3	277.3	19.97	14.887	
4,300.0	4,283.9	4,283.5	4,236.7	11.1	14.6	18.44	18.44	595.8	-139.1	303.3	282.8	20.47	14.813	
4,400.0	4,383.4	4,383.4	4,335.2	11.4	15.0	18.70	18.70	611.2	-141.9	309.3	288.3	20.98	14.743	
4,500.0	4,482.9	4,483.2	4,433.8	11.7	15.3	18.95	18.95	626.6	-144.7	315.3	293.8	21.48	14.676	
4,600.0	4,582.4	4,583.0	4,532.4	12.0	15.7	19.18	19.18	642.0	-147.5	321.3	299.3	21.99	14.612	
4,700.0	4,681.9	4,682.8	4,630.9	12.3	16.1	19.41	19.41	657.5	-150.3	327.3	304.8	22.50	14.550	
4,800.0	4,781.3	4,782.6	4,729.5	12.6	16.4	19.64	19.64	672.9	-153.2	333.4	310.4	23.00	14.492	
4,900.0	4,880.8	4,882.4	4,828.1	12.9	16.8	19.85	19.85	688.3	-156.0	339.4	315.9	23.51	14.436	
5,000.0	4,980.3	4,982.2	4,926.7	13.2	17.2	20.06	20.06	703.7	-158.8	345.4	321.4	24.02	14.382	

CC - Min centre to center distance or convergent point, SF - min separation factor, ES - min ellipse separation

<b>Company:</b>	PETROLEUM DEVELOPMENT CORP Weld County CO	<b>Local Co-ordinate Reference:</b>	Well Maxey 24P-332
<b>Project:</b>	SEC.24-T5N-R65W	<b>TVD Reference:</b>	WELL @ 4650.0ft (Original Well Elev)
<b>Reference Site:</b>	Maxey 24Q-HZ Pad Sec.24-T5N-R65W	<b>MD Reference:</b>	WELL @ 4650.0ft (Original Well Elev)
<b>Site Error:</b>	0.0ft	<b>North Reference:</b>	True
<b>Reference Well:</b>	Maxey 24P-332	<b>Survey Calculation Method:</b>	Minimum Curvature
<b>Well Error:</b>	0.0ft	<b>Output errors are at</b>	2.00 sigma
<b>Reference Wellbore</b>	Wellbore #1	<b>Database:</b>	Landmark
<b>Reference Design:</b>	Plan #1 (03-07-13)	<b>Offset TVD Reference:</b>	Offset Datum

Offset Design Maxey 24Q-HZ Pad Sec.24-T5N-R65W - Maxey 24P-232 - Wellbore #1 - Plan #1 (3-07-13)													Offset Site Error:	0.0 ft
Survey Program: 0-MWD													Offset Well Error:	0.0 ft
Measured Depth (ft)	Vertical Depth (ft)	Measured Depth (ft)	Vertical Depth (ft)	Reference	Offset	Semi Major Axis	Highside Toolface (°)	Offset Wellbore Centre +N/-S (ft)	Offset Wellbore Centre +E/-W (ft)	Between Centres (ft)	Between Ellipses (ft)	Minimum Separation (ft)	Separation Factor	Warning
5,100.0	5,079.8	5,082.0	5,025.2	13.5	17.5	20.26	20.26	719.1	-161.6	351.5	326.9	24.53	14.330	
5,200.0	5,179.3	5,192.3	5,134.3	13.7	17.9	20.50	20.50	734.9	-164.4	356.4	331.4	25.04	14.236	
5,300.0	5,278.8	5,306.3	5,247.7	14.0	18.2	20.80	20.80	747.0	-166.7	358.4	332.9	25.47	14.068	
5,400.0	5,378.7	5,420.4	5,361.5	14.2	18.4	21.00	21.00	754.7	-168.0	359.5	333.7	25.82	13.925	
5,500.0	5,478.6	5,534.6	5,475.6	14.4	18.6	21.09	21.09	757.9	-168.6	360.0	333.9	26.11	13.786	
5,600.0	5,578.6	5,637.6	5,578.6	14.5	18.7	-1.06	-1.06	758.0	-168.6	360.0	327.2	32.82	10.970	
5,700.0	5,678.6	5,737.6	5,678.6	14.7	18.8	-1.06	-1.06	758.0	-168.6	360.0	326.9	33.15	10.861	
5,800.0	5,778.6	5,837.6	5,778.6	14.9	19.0	-1.06	-1.06	758.0	-168.6	360.0	326.5	33.48	10.753	
5,900.0	5,878.6	5,937.6	5,878.6	15.1	19.1	-1.06	-1.06	758.0	-168.6	360.0	326.2	33.82	10.646	
6,000.0	5,978.6	6,037.6	5,978.6	15.3	19.3	-1.06	-1.06	758.0	-168.6	360.0	325.9	34.16	10.540	
6,100.0	6,078.6	6,138.1	6,078.9	15.5	19.4	-90.32	-90.32	757.9	-162.0	359.9	331.4	28.56	12.602	
6,116.2	6,094.8	6,154.2	6,094.8	15.5	19.4	-90.01	-90.01	757.9	-159.7	359.9	331.3	28.63	12.571	
6,200.0	6,178.2	6,236.9	6,175.7	15.6	19.5	-88.43	-88.43	757.8	-142.7	360.1	331.1	28.98	12.423	
6,300.0	6,276.0	6,334.2	6,267.8	15.7	19.6	-86.59	-86.59	757.7	-111.6	360.6	331.2	29.36	12.281	
6,400.0	6,370.2	6,430.2	6,354.1	15.8	19.6	-84.82	-84.82	757.4	-69.7	361.4	331.7	29.72	12.163	
6,500.0	6,459.3	6,524.9	6,433.4	15.9	19.7	-83.15	-83.15	757.2	-18.1	362.6	332.5	30.11	12.040	
6,600.0	6,541.7	6,618.4	6,504.9	16.0	19.8	-81.61	-81.61	756.9	42.1	363.9	333.2	30.66	11.868	
6,700.0	6,616.1	6,711.0	6,568.0	16.1	20.0	-80.22	-80.22	756.5	109.8	365.3	333.8	31.48	11.604	
6,800.0	6,681.0	6,802.7	6,621.9	16.3	20.2	-79.00	-79.00	756.1	184.0	366.8	334.0	32.72	11.210	
6,900.0	6,735.5	6,893.7	6,666.2	17.2	20.6	-77.95	-77.95	755.7	263.4	368.1	333.6	34.50	10.670	
7,000.0	6,778.7	6,984.1	6,700.5	18.4	21.3	-77.10	-77.10	755.2	346.9	369.4	332.5	36.88	10.015	
7,100.0	6,809.6	7,074.0	6,724.7	19.9	22.3	-76.44	-76.44	754.8	433.5	370.4	330.5	39.84	9.296	
7,200.0	6,827.9	7,163.6	6,738.5	21.8	23.7	-75.99	-75.99	754.3	521.9	371.1	327.8	43.30	8.569	
7,300.0	6,833.3	7,254.5	6,742.0	23.7	25.4	-75.77	-75.77	753.8	612.7	371.4	324.3	47.19	7.871	
7,400.0	6,831.7	7,354.5	6,741.6	25.9	27.4	-75.95	-75.95	753.3	712.7	371.2	319.8	51.37	7.225	
7,500.0	6,830.1	7,454.5	6,741.2	28.1	29.5	-76.13	-76.13	752.8	812.7	370.9	315.1	55.77	6.651	
7,600.0	6,828.5	7,554.5	6,740.8	30.5	31.8	-76.31	-76.31	752.2	912.7	370.6	310.3	60.35	6.141	
7,700.0	6,826.9	7,654.5	6,740.4	32.9	34.1	-76.49	-76.49	751.7	1,012.7	370.4	305.3	65.08	5.691	
7,800.0	6,825.3	7,754.5	6,740.0	35.3	36.5	-76.67	-76.67	751.2	1,112.7	370.1	300.2	69.93	5.293	
7,900.0	6,823.7	7,854.5	6,739.6	37.8	39.0	-76.85	-76.85	750.6	1,212.7	369.8	295.0	74.88	4.939	
8,000.0	6,822.1	7,954.5	6,739.2	40.4	41.5	-77.03	-77.03	750.1	1,312.7	369.6	289.7	79.90	4.625	
8,100.0	6,820.6	8,054.5	6,738.8	43.0	44.1	-77.21	-77.21	749.6	1,412.6	369.3	284.3	85.00	4.345	
8,200.0	6,819.0	8,154.4	6,738.4	45.6	46.6	-77.39	-77.39	749.1	1,512.6	369.1	278.9	90.15	4.094	
8,300.0	6,817.4	8,254.4	6,738.0	48.2	49.2	-77.57	-77.57	748.5	1,612.6	368.9	273.5	95.36	3.868	
8,400.0	6,815.8	8,354.4	6,737.6	50.9	51.9	-77.75	-77.75	748.0	1,712.6	368.6	268.0	100.60	3.664	
8,500.0	6,814.2	8,454.4	6,737.2	53.5	54.5	-77.93	-77.93	747.5	1,812.6	368.4	262.5	105.88	3.479	
8,600.0	6,812.6	8,554.4	6,736.8	56.2	57.2	-78.11	-78.11	746.9	1,912.6	368.2	257.0	111.20	3.311	
8,700.0	6,811.0	8,654.4	6,736.4	58.9	59.8	-78.29	-78.29	746.4	2,012.6	367.9	251.4	116.54	3.157	
8,800.0	6,809.4	8,754.4	6,736.0	61.6	62.5	-78.47	-78.47	745.9	2,112.6	367.7	245.8	121.91	3.016	
8,900.0	6,807.9	8,854.4	6,735.6	64.3	65.2	-78.65	-78.65	745.3	2,212.6	367.5	240.2	127.30	2.887	
9,000.0	6,806.3	8,954.4	6,735.2	67.1	67.9	-78.84	-78.84	744.8	2,312.6	367.3	234.6	132.71	2.767	
9,100.0	6,804.7	9,054.4	6,734.8	69.8	70.6	-79.02	-79.02	744.3	2,412.6	367.0	228.9	138.14	2.657	
9,200.0	6,803.1	9,154.4	6,734.4	72.5	73.4	-79.20	-79.20	743.8	2,512.5	366.8	223.3	143.59	2.555	
9,300.0	6,801.5	9,254.4	6,734.0	75.3	76.1	-79.38	-79.38	743.2	2,612.5	366.6	217.6	149.05	2.460	
9,400.0	6,799.9	9,354.4	6,733.6	78.0	78.8	-79.57	-79.57	742.7	2,712.5	366.4	211.9	154.53	2.371	
9,500.0	6,798.3	9,454.4	6,733.2	80.7	81.6	-79.75	-79.75	742.2	2,812.5	366.2	206.2	160.02	2.289	
9,600.0	6,796.7	9,554.4	6,732.8	83.5	84.3	-79.93	-79.93	741.6	2,912.5	366.0	200.5	165.52	2.211	
9,700.0	6,795.2	9,654.3	6,732.3	86.3	87.0	-80.12	-80.12	741.1	3,012.5	365.9	194.8	171.04	2.139	
9,800.0	6,793.6	9,754.3	6,731.9	89.0	89.8	-80.30	-80.30	740.6	3,112.5	365.7	189.1	176.56	2.071	
9,900.0	6,792.0	9,854.3	6,731.5	91.8	92.5	-80.48	-80.48	740.0	3,212.5	365.5	183.4	182.10	2.007	
10,000.0	6,790.4	9,954.3	6,731.1	94.5	95.3	-80.67	-80.67	739.5	3,312.5	365.3	177.7	187.64	1.947	

CC - Min centre to center distance or convergent point, SF - min separation factor, ES - min ellipse separation



<b>Company:</b>	PETROLEUM DEVELOPMENT CORP Weld County CO	<b>Local Co-ordinate Reference:</b>	Well Maxey 24P-332
<b>Project:</b>	SEC.24-T5N-R65W	<b>TVD Reference:</b>	WELL @ 4650.0ft (Original Well Elev)
<b>Reference Site:</b>	Maxey 24Q-HZ Pad Sec.24-T5N-R65W	<b>MD Reference:</b>	WELL @ 4650.0ft (Original Well Elev)
<b>Site Error:</b>	0.0ft	<b>North Reference:</b>	True
<b>Reference Well:</b>	Maxey 24P-332	<b>Survey Calculation Method:</b>	Minimum Curvature
<b>Well Error:</b>	0.0ft	<b>Output errors are at</b>	2.00 sigma
<b>Reference Wellbore</b>	Wellbore #1	<b>Database:</b>	Landmark
<b>Reference Design:</b>	Plan #1 (03-07-13)	<b>Offset TVD Reference:</b>	Offset Datum

<b>Offset Design</b> Maxey 24Q-HZ Pad Sec.24-T5N-R65W - Maxey 24P-232 - Wellbore #1 - Plan #1 (3-07-13)												<b>Offset Site Error:</b>	0.0 ft
Survey Program: 0-MWD												<b>Offset Well Error:</b>	0.0 ft
Measured Depth (ft)	Vertical Depth (ft)	Measured Depth (ft)	Vertical Depth (ft)	Reference	Offset	Semi Major Axis Highside Toolface (°)	Offset Wellbore Centre +N/-S (ft)	Offset Wellbore Centre +E/-W (ft)	Between Centres (ft)	Between Ellipses (ft)	Minimum Separation (ft)	Separation Factor	Warning
10,100.0	6,788.8	10,054.3	6,730.7	97.3	98.1	-80.85	739.0	3,412.5	365.1	171.9	193.19	1.890	
10,200.0	6,787.2	10,154.3	6,730.3	100.1	100.8	-81.04	738.4	3,512.5	365.0	166.2	198.75	1.836	
10,300.0	6,785.6	10,254.3	6,729.9	102.8	103.6	-81.22	737.9	3,612.4	364.8	160.5	204.32	1.785	
10,400.0	6,784.0	10,354.3	6,729.5	105.6	106.4	-81.41	737.4	3,712.4	364.6	154.7	209.90	1.737	
10,500.0	6,782.4	10,454.3	6,729.1	108.4	109.1	-81.59	736.9	3,812.4	364.5	149.0	215.48	1.691	
10,600.0	6,780.9	10,554.3	6,728.7	111.2	111.9	-81.78	736.3	3,912.4	364.3	143.2	221.06	1.648	
10,700.0	6,779.3	10,654.3	6,728.3	113.9	114.7	-81.96	735.8	4,012.4	364.2	137.5	226.66	1.607	
10,800.0	6,777.7	10,754.3	6,727.9	116.7	117.5	-82.15	735.3	4,112.4	364.0	131.7	232.26	1.567	
10,900.0	6,776.1	10,854.3	6,727.5	119.5	120.2	-82.33	734.7	4,212.4	363.9	126.0	237.86	1.530	
11,000.0	6,774.5	10,954.3	6,727.1	122.3	123.0	-82.52	734.2	4,312.4	363.7	120.2	243.47	1.494	Level 3
11,100.0	6,772.9	11,054.2	6,726.7	125.1	125.8	-82.70	733.7	4,412.4	363.6	114.5	249.08	1.460	Level 3
11,200.0	6,771.3	11,154.2	6,726.3	127.9	128.6	-82.89	733.1	4,512.4	363.4	108.7	254.70	1.427	Level 3
11,264.7	6,770.3	11,218.9	6,726.1	129.7	130.4	-83.01	732.8	4,577.1	363.4	105.0	258.33	1.407	Level 3
11,283.6	6,770.0	11,236.0	6,726.0	130.2	130.8	-83.04	732.7	4,594.2	363.3	104.0	259.35	1.401	Level 3, SF

<b>Company:</b>	PETROLEUM DEVELOPMENT CORP Weld County CO	<b>Local Co-ordinate Reference:</b>	Well Maxey 24P-332
<b>Project:</b>	SEC.24-T5N-R65W	<b>TVD Reference:</b>	WELL @ 4650.0ft (Original Well Elev)
<b>Reference Site:</b>	Maxey 24Q-HZ Pad Sec.24-T5N-R65W	<b>MD Reference:</b>	WELL @ 4650.0ft (Original Well Elev)
<b>Site Error:</b>	0.0ft	<b>North Reference:</b>	True
<b>Reference Well:</b>	Maxey 24P-332	<b>Survey Calculation Method:</b>	Minimum Curvature
<b>Well Error:</b>	0.0ft	<b>Output errors are at</b>	2.00 sigma
<b>Reference Wellbore</b>	Wellbore #1	<b>Database:</b>	Landmark
<b>Reference Design:</b>	Plan #1 (03-07-13)	<b>Offset TVD Reference:</b>	Offset Datum

Offset Design Maxey 24Q-HZ Pad Sec.24-T5N-R65W - Maxey 24Q-112 - Wellbore #1 - Plan #1 (3-07-13)													Offset Site Error:	0.0 ft
Survey Program: 0-MWD													Offset Well Error:	0.0 ft
Measured Depth (ft)	Vertical Depth (ft)	Measured Depth (ft)	Vertical Depth (ft)	Reference	Offset	Semi Major Axis	Highside Toolface (°)	Offset Wellbore Centre +N/-S (ft)	Offset Wellbore Centre +E/-W (ft)	Distance Between Centres (ft)	Distance Between Ellipses (ft)	Minimum Separation (ft)	Separation Factor	Warning
0.0	0.0	0.0	0.0	0.0	0.0	90.02	90.02	0.0	30.6	30.6				
100.0	100.0	100.0	100.0	0.1	0.1	90.02	90.02	0.0	30.6	30.6	30.4	0.22	136.352	
200.0	200.0	200.0	200.0	0.3	0.3	90.02	90.02	0.0	30.6	30.6	30.0	0.67	45.451	
300.0	300.0	300.0	300.0	0.6	0.6	90.02	90.02	0.0	30.6	30.6	29.5	1.12	27.270	
400.0	400.0	400.0	400.0	0.8	0.8	90.02	90.02	0.0	30.6	30.6	29.1	1.57	19.479	
500.0	500.0	500.0	500.0	1.0	1.0	90.02	90.02	0.0	30.6	30.6	28.6	2.02	15.150	
600.0	600.0	600.0	600.0	1.2	1.2	90.02	90.02	0.0	30.6	30.6	28.2	2.47	12.396	
700.0	700.0	700.0	700.0	1.5	1.5	90.02	90.02	0.0	30.6	30.6	27.7	2.92	10.489	
800.0	800.0	800.0	800.0	1.7	1.7	90.02	90.02	0.0	30.6	30.6	27.3	3.37	9.090	
900.0	900.0	900.0	900.0	1.9	1.9	90.02	90.02	0.0	30.6	30.6	26.8	3.82	8.021	
1,000.0	1,000.0	1,000.0	1,000.0	2.1	2.1	90.02	90.02	0.0	30.6	30.6	26.4	4.27	7.176 CC, ES	
1,100.0	1,100.0	1,100.0	1,100.0	2.4	2.4	115.11	115.11	0.0	30.6	31.3	26.6	4.72	6.644	
1,200.0	1,199.8	1,199.8	1,199.8	2.6	2.6	123.09	123.09	0.0	30.6	33.9	28.7	5.16	6.566	
1,300.0	1,299.5	1,299.5	1,299.5	2.8	2.8	133.68	133.68	0.0	30.6	39.3	33.7	5.61	7.016	
1,400.0	1,398.9	1,398.9	1,398.9	3.1	3.0	142.66	142.66	0.0	30.6	47.0	40.9	6.06	7.752	
1,500.0	1,498.4	1,498.4	1,498.4	3.3	3.3	149.04	149.04	0.0	30.6	55.4	48.9	6.51	8.512	
1,600.0	1,597.9	1,599.9	1,599.9	3.6	3.5	154.37	154.37	0.6	29.0	62.7	55.8	6.95	9.025	
1,700.0	1,697.4	1,701.7	1,701.6	3.8	3.7	159.91	159.91	2.4	24.0	67.3	60.0	7.39	9.114	
1,800.0	1,796.9	1,803.5	1,803.0	4.1	3.9	166.29	166.29	5.5	15.5	69.5	61.7	7.83	8.874	
1,900.0	1,896.3	1,903.5	1,902.3	4.4	4.2	173.29	173.29	9.3	5.2	70.7	62.4	8.29	8.535	
2,000.0	1,995.8	2,003.1	2,001.3	4.6	4.4	179.95	179.95	13.0	-5.2	72.9	64.2	8.76	8.329	
2,100.0	2,095.3	2,102.7	2,100.3	4.9	4.6	-173.86	-173.86	16.8	-15.6	76.1	66.8	9.25	8.228	
2,200.0	2,194.8	2,202.3	2,199.3	5.2	4.9	-168.21	-168.21	20.6	-26.0	80.0	70.3	9.75	8.207	
2,300.0	2,294.3	2,302.0	2,298.3	5.5	5.2	-163.13	-163.13	24.4	-36.4	84.7	74.4	10.27	8.245	
2,400.0	2,393.8	2,401.6	2,397.3	5.7	5.4	-158.61	-158.61	28.2	-46.8	89.9	79.1	10.80	8.324	
2,500.0	2,493.2	2,501.2	2,496.3	6.0	5.7	-154.61	-154.61	31.9	-57.2	95.7	84.3	11.35	8.433	
2,600.0	2,592.7	2,600.8	2,595.3	6.3	6.0	-151.08	-151.08	35.7	-67.6	101.8	90.0	11.90	8.561	
2,700.0	2,692.2	2,700.5	2,694.3	6.6	6.3	-147.96	-147.96	39.5	-78.0	108.4	95.9	12.45	8.701	
2,800.0	2,791.7	2,800.1	2,793.4	6.9	6.5	-145.19	-145.19	43.3	-88.4	115.1	102.1	13.01	8.849	
2,900.0	2,891.2	2,899.7	2,892.4	7.1	6.8	-142.74	-142.74	47.1	-98.8	122.2	108.6	13.57	9.000	
3,000.0	2,990.7	2,999.3	2,991.4	7.4	7.1	-140.56	-140.56	50.8	-109.2	129.4	115.3	14.14	9.152	
3,100.0	3,090.1	3,099.0	3,090.4	7.7	7.4	-138.62	-138.62	54.6	-119.6	136.8	122.1	14.70	9.302	
3,200.0	3,189.6	3,198.6	3,189.4	8.0	7.7	-136.87	-136.87	58.4	-130.0	144.3	129.0	15.27	9.450	
3,300.0	3,289.1	3,298.2	3,288.4	8.3	8.0	-135.30	-135.30	62.2	-140.4	152.0	136.1	15.84	9.595	
3,400.0	3,388.6	3,398.2	3,387.9	8.6	8.2	-134.58	-134.58	65.3	-149.0	159.6	143.3	16.33	9.777	
3,500.0	3,488.1	3,498.2	3,487.8	8.8	8.4	-135.13	-135.13	67.2	-154.3	167.1	150.3	16.78	9.957	
3,600.0	3,587.6	3,598.0	3,587.5	9.1	8.5	-136.77	-136.77	68.0	-156.3	174.5	157.3	17.20	10.146	
3,700.0	3,687.0	3,697.5	3,687.0	9.4	8.7	-138.95	-138.95	68.0	-156.4	182.0	164.4	17.60	10.342	
3,800.0	3,786.5	3,796.9	3,786.5	9.7	8.9	-140.96	-140.96	68.0	-156.4	189.8	171.8	18.02	10.533	
3,900.0	3,886.0	3,896.4	3,886.0	10.0	9.1	-142.81	-142.81	68.0	-156.4	197.8	179.4	18.44	10.727	
4,000.0	3,985.5	3,995.9	3,985.5	10.3	9.3	-144.51	-144.51	68.0	-156.4	206.0	187.1	18.86	10.922	
4,100.0	4,085.0	4,095.4	4,085.0	10.6	9.5	-146.09	-146.09	68.0	-156.4	214.4	195.1	19.28	11.117	
4,200.0	4,184.5	4,194.9	4,184.5	10.9	9.7	-147.54	-147.54	68.0	-156.4	222.9	203.2	19.70	11.311	
4,300.0	4,283.9	4,294.4	4,283.9	11.1	9.9	-148.89	-148.89	68.0	-156.4	231.5	211.4	20.13	11.503	
4,400.0	4,383.4	4,393.8	4,383.4	11.4	10.1	-150.14	-150.14	68.0	-156.4	240.3	219.8	20.55	11.692	
4,500.0	4,482.9	4,493.3	4,482.9	11.7	10.4	-151.30	-151.30	68.0	-156.4	249.2	228.2	20.98	11.878	
4,600.0	4,582.4	4,592.8	4,582.4	12.0	10.6	-152.38	-152.38	68.0	-156.4	258.1	236.7	21.40	12.061	
4,700.0	4,681.9	4,692.3	4,681.9	12.3	10.8	-153.39	-153.39	68.0	-156.4	267.2	245.4	21.83	12.239	
4,800.0	4,781.3	4,791.8	4,781.3	12.6	11.0	-154.33	-154.33	68.0	-156.4	276.3	254.1	22.26	12.413	
4,900.0	4,880.8	4,891.3	4,880.8	12.9	11.2	-155.22	-155.22	68.0	-156.4	285.5	262.8	22.69	12.583	
5,000.0	4,980.3	4,990.7	4,980.3	13.2	11.4	-156.04	-156.04	68.0	-156.4	294.8	271.7	23.12	12.749	

CC - Min centre to center distance or convergent point, SF - min separation factor, ES - min ellipse separation

<b>Company:</b>	PETROLEUM DEVELOPMENT CORP Weld County CO	<b>Local Co-ordinate Reference:</b>	Well Maxey 24P-332
<b>Project:</b>	SEC.24-T5N-R65W	<b>TVD Reference:</b>	WELL @ 4650.0ft (Original Well Elev)
<b>Reference Site:</b>	Maxey 24Q-HZ Pad Sec.24-T5N-R65W	<b>MD Reference:</b>	WELL @ 4650.0ft (Original Well Elev)
<b>Site Error:</b>	0.0ft	<b>North Reference:</b>	True
<b>Reference Well:</b>	Maxey 24P-332	<b>Survey Calculation Method:</b>	Minimum Curvature
<b>Well Error:</b>	0.0ft	<b>Output errors are at</b>	2.00 sigma
<b>Reference Wellbore</b>	Wellbore #1	<b>Database:</b>	Landmark
<b>Reference Design:</b>	Plan #1 (03-07-13)	<b>Offset TVD Reference:</b>	Offset Datum

Offset Design Maxey 24Q-HZ Pad Sec.24-T5N-R65W - Maxey 24Q-112 - Wellbore #1 - Plan #1 (3-07-13)													Offset Site Error:	0.0 ft
Survey Program: 0-MWD													Offset Well Error:	0.0 ft
Measured Depth (ft)	Vertical Depth (ft)	Measured Depth (ft)	Vertical Depth (ft)	Reference	Offset	Semi Major Axis	Highside Toolface (°)	Offset Wellbore Centre +N/-S (ft)	Offset Wellbore Centre +E/-W (ft)	Between Centres (ft)	Between Ellipses (ft)	Minimum Separation (ft)	Separation Factor	Warning
5,100.0	5,079.8	5,090.2	5,079.8	13.5	11.6	-156.82		68.0	-156.4	304.1	280.5	23.56	12.910	
5,200.0	5,179.3	5,189.7	5,179.3	13.7	11.8	-157.55		68.0	-156.4	313.5	289.5	23.99	13.067	
5,300.0	5,278.8	5,289.3	5,278.8	14.0	12.0	-158.22		68.0	-156.4	322.1	297.7	24.42	13.191	
5,400.0	5,378.7	5,389.1	5,378.7	14.2	12.2	-158.65		68.0	-156.4	327.7	302.9	24.80	13.213	
5,500.0	5,478.6	5,489.0	5,478.6	14.4	12.5	-158.83		68.0	-156.4	330.0	304.8	25.16	13.117	
5,600.0	5,578.6	5,589.0	5,578.6	14.5	12.7	179.02		68.0	-156.4	330.1	303.6	26.43	12.489	
5,700.0	5,678.6	5,689.0	5,678.6	14.7	12.9	179.02		68.0	-156.4	330.1	303.2	26.84	12.299	
5,800.0	5,778.6	5,789.0	5,778.6	14.9	13.1	179.02		68.0	-156.4	330.1	302.8	27.25	12.114	
5,863.6	5,842.2	5,852.6	5,842.2	15.0	13.2	179.02		68.0	-156.4	330.1	302.5	27.51	11.999	
5,900.0	5,878.6	5,889.0	5,878.5	15.1	13.3	179.01		68.0	-156.3	330.1	302.4	27.66	11.934	
6,000.0	5,978.6	5,987.3	5,976.5	15.3	13.5	177.73		68.0	-148.9	330.3	302.2	28.07	11.768	
6,100.0	6,078.6	6,082.3	6,069.5	15.5	13.6	84.12		67.9	-129.9	331.8	304.4	27.42	12.104	
6,200.0	6,178.2	6,173.6	6,156.0	15.6	13.7	80.07		67.7	-100.8	335.3	307.7	27.58	12.156	
6,300.0	6,276.0	6,262.6	6,236.5	15.7	13.8	76.28		67.5	-62.8	340.1	312.4	27.74	12.261	
6,400.0	6,370.2	6,350.0	6,310.6	15.8	14.0	72.81		67.3	-16.6	346.0	318.1	27.92	12.392	
6,500.0	6,459.3	6,434.9	6,377.1	15.9	14.3	69.73		67.0	36.1	352.4	324.3	28.16	12.516	
6,600.0	6,541.7	6,518.7	6,436.6	16.0	14.7	67.01		66.7	95.0	359.1	330.6	28.50	12.598	
6,700.0	6,616.1	6,600.0	6,487.8	16.1	15.3	64.72		66.4	158.1	365.5	336.5	29.01	12.601	
6,800.0	6,681.0	6,682.8	6,532.8	16.3	16.1	62.78		66.1	227.6	371.5	341.7	29.81	12.461	
6,900.0	6,735.5	6,763.5	6,569.2	17.2	17.1	61.24		65.7	299.6	376.6	345.6	30.95	12.169	
7,000.0	6,778.7	6,843.7	6,597.6	18.4	18.3	60.09		65.3	374.5	380.6	348.1	32.50	11.713	
7,100.0	6,809.6	6,923.3	6,617.9	19.9	19.7	59.31		64.9	451.5	383.5	349.0	34.50	11.115	
7,200.0	6,827.9	7,000.0	6,629.8	21.8	21.1	58.91		64.6	527.2	385.0	348.1	36.90	10.434	
7,300.0	6,833.3	7,082.1	6,634.0	23.7	22.8	58.85		64.1	609.1	385.2	345.4	39.80	9.677	
7,400.0	6,831.7	7,180.8	6,633.2	25.9	25.0	58.95		63.7	707.8	384.7	341.2	43.51	8.843	
7,500.0	6,830.1	7,280.8	6,632.4	28.1	27.2	59.04		63.2	807.8	384.3	336.9	47.45	8.099	
7,600.0	6,828.5	7,380.8	6,631.5	30.5	29.6	59.13		62.6	907.8	383.9	332.3	51.57	7.444	
7,700.0	6,826.9	7,480.8	6,630.6	32.9	32.1	59.22		62.1	1,007.8	383.5	327.7	55.82	6.870	
7,800.0	6,825.3	7,580.7	6,629.8	35.3	34.6	59.31		61.6	1,107.8	383.1	322.9	60.19	6.365	
7,900.0	6,823.7	7,680.7	6,628.9	37.8	37.1	59.40		61.1	1,207.8	382.7	318.0	64.64	5.920	
8,000.0	6,822.1	7,780.7	6,628.1	40.4	39.7	59.49		60.6	1,307.8	382.3	313.1	69.16	5.527	
8,100.0	6,820.6	7,880.7	6,627.2	43.0	42.3	59.58		60.1	1,407.8	381.9	308.1	73.75	5.178	
8,200.0	6,819.0	7,980.7	6,626.4	45.6	44.9	59.67		59.6	1,507.8	381.4	303.1	78.38	4.866	
8,300.0	6,817.4	8,080.7	6,625.5	48.2	47.6	59.77		59.1	1,607.7	381.0	298.0	83.07	4.587	
8,400.0	6,815.8	8,180.7	6,624.7	50.9	50.2	59.86		58.6	1,707.7	380.6	292.8	87.79	4.336	
8,500.0	6,814.2	8,280.7	6,623.8	53.5	52.9	59.95		58.1	1,807.7	380.2	287.7	92.55	4.108	
8,600.0	6,812.6	8,380.7	6,623.0	56.2	55.6	60.04		57.6	1,907.7	379.8	282.5	97.33	3.902	
8,700.0	6,811.0	8,480.7	6,622.1	58.9	58.3	60.13		57.1	2,007.7	379.4	277.3	102.15	3.714	
8,800.0	6,809.4	8,580.7	6,621.2	61.6	61.0	60.23		56.6	2,107.7	379.0	272.0	106.99	3.542	
8,900.0	6,807.9	8,680.7	6,620.4	64.3	63.8	60.32		56.1	2,207.7	378.6	266.8	111.85	3.385	
9,000.0	6,806.3	8,780.7	6,619.5	67.1	66.5	60.41		55.6	2,307.7	378.2	261.5	116.74	3.240	
9,100.0	6,804.7	8,880.7	6,618.7	69.8	69.2	60.51		55.1	2,407.7	377.8	256.2	121.64	3.106	
9,200.0	6,803.1	8,980.7	6,617.8	72.5	72.0	60.60		54.6	2,507.7	377.4	250.8	126.57	2.982	
9,300.0	6,801.5	9,080.7	6,617.0	75.3	74.7	60.69		54.1	2,607.7	377.0	245.5	131.51	2.867	
9,400.0	6,799.9	9,180.7	6,616.1	78.0	77.5	60.79		53.6	2,707.7	376.6	240.2	136.46	2.760	
9,500.0	6,798.3	9,280.7	6,615.3	80.7	80.2	60.88		53.1	2,807.7	376.2	234.8	141.43	2.660	
9,600.0	6,796.7	9,380.7	6,614.4	83.5	83.0	60.98		52.6	2,907.6	375.8	229.4	146.42	2.567	
9,700.0	6,795.2	9,480.7	6,613.5	86.3	85.7	61.07		52.1	3,007.6	375.4	224.0	151.42	2.479	
9,800.0	6,793.6	9,580.7	6,612.7	89.0	88.5	61.17		51.6	3,107.6	375.0	218.6	156.43	2.397	
9,900.0	6,792.0	9,680.7	6,611.8	91.8	91.3	61.26		51.1	3,207.6	374.7	213.2	161.46	2.320	
10,000.0	6,790.4	9,780.7	6,611.0	94.5	94.0	61.36		50.6	3,307.6	374.3	207.8	166.50	2.248	

CC - Min centre to center distance or convergent point, SF - min separation factor, ES - min ellipse separation

<b>Company:</b>	PETROLEUM DEVELOPMENT CORP Weld County CO	<b>Local Co-ordinate Reference:</b>	Well Maxey 24P-332
<b>Project:</b>	SEC.24-T5N-R65W	<b>TVD Reference:</b>	WELL @ 4650.0ft (Original Well Elev)
<b>Reference Site:</b>	Maxey 24Q-HZ Pad Sec.24-T5N-R65W	<b>MD Reference:</b>	WELL @ 4650.0ft (Original Well Elev)
<b>Site Error:</b>	0.0ft	<b>North Reference:</b>	True
<b>Reference Well:</b>	Maxey 24P-332	<b>Survey Calculation Method:</b>	Minimum Curvature
<b>Well Error:</b>	0.0ft	<b>Output errors are at</b>	2.00 sigma
<b>Reference Wellbore</b>	Wellbore #1	<b>Database:</b>	Landmark
<b>Reference Design:</b>	Plan #1 (03-07-13)	<b>Offset TVD Reference:</b>	Offset Datum

<b>Offset Design</b> Maxey 24Q-HZ Pad Sec.24-T5N-R65W - Maxey 24Q-112 - Wellbore #1 - Plan #1 (3-07-13)												<b>Offset Site Error:</b>	0.0 ft
Survey Program: 0-MWD												<b>Offset Well Error:</b>	0.0 ft
Measured Depth (ft)	Vertical Depth (ft)	Measured Depth (ft)	Vertical Depth (ft)	Reference	Offset	Highside Toolface (°)	Offset Wellbore Centre +N/-S (ft)	+E/-W (ft)	Between Centres (ft)	Between Ellipses (ft)	Minimum Separation (ft)	Separation Factor	Warning
10,100.0	6,788.8	9,880.7	6,610.1	97.3	96.8	61.45	50.1	3,407.6	373.9	202.3	171.55	2.179	
10,200.0	6,787.2	9,980.7	6,609.3	100.1	99.6	61.55	49.6	3,507.6	373.5	196.9	176.61	2.115	
10,300.0	6,785.6	10,080.7	6,608.4	102.8	102.4	61.64	49.1	3,607.6	373.1	191.4	181.69	2.053	
10,400.0	6,784.0	10,180.7	6,607.6	105.6	105.1	61.74	48.6	3,707.6	372.7	185.9	186.78	1.996	
10,500.0	6,782.4	10,280.7	6,606.7	108.4	107.9	61.84	48.1	3,807.6	372.3	180.5	191.87	1.940	
10,600.0	6,780.9	10,380.7	6,605.8	111.2	110.7	61.93	47.6	3,907.6	371.9	175.0	196.98	1.888	
10,700.0	6,779.3	10,480.7	6,605.0	113.9	113.5	62.03	47.1	4,007.6	371.6	169.5	202.10	1.839	
10,800.0	6,777.7	10,580.7	6,604.1	116.7	116.3	62.12	46.6	4,107.6	371.2	164.0	207.23	1.791	
10,900.0	6,776.1	10,680.7	6,603.3	119.5	119.1	62.22	46.1	4,207.5	370.8	158.4	212.37	1.746	
11,000.0	6,774.5	10,780.7	6,602.4	122.3	121.8	62.32	45.6	4,307.5	370.4	152.9	217.52	1.703	
11,100.0	6,772.9	10,880.7	6,601.6	125.1	124.6	62.42	45.1	4,407.5	370.0	147.4	222.67	1.662	
11,200.0	6,771.3	10,980.7	6,600.7	127.9	127.4	62.51	44.6	4,507.5	369.7	141.8	227.84	1.622	
11,283.6	6,770.0	11,064.3	6,600.0	130.2	129.8	62.60	44.2	4,591.1	369.3	137.2	232.17	1.591 SF	

<b>Company:</b>	PETROLEUM DEVELOPMENT CORP Weld County CO	<b>Local Co-ordinate Reference:</b>	Well Maxey 24P-332
<b>Project:</b>	SEC.24-T5N-R65W	<b>TVD Reference:</b>	WELL @ 4650.0ft (Original Well Elev)
<b>Reference Site:</b>	Maxey 24Q-HZ Pad Sec.24-T5N-R65W	<b>MD Reference:</b>	WELL @ 4650.0ft (Original Well Elev)
<b>Site Error:</b>	0.0ft	<b>North Reference:</b>	True
<b>Reference Well:</b>	Maxey 24P-332	<b>Survey Calculation Method:</b>	Minimum Curvature
<b>Well Error:</b>	0.0ft	<b>Output errors are at</b>	2.00 sigma
<b>Reference Wellbore</b>	Wellbore #1	<b>Database:</b>	Landmark
<b>Reference Design:</b>	Plan #1 (03-07-13)	<b>Offset TVD Reference:</b>	Offset Datum

Offset Design Maxey 24Q-HZ Pad Sec.24-T5N-R65W - Maxey 24Q-302 - Wellbore #1 - Plan #1 (3-07-13)													Offset Site Error:	0.0 ft
Survey Program: 0-MWD													Offset Well Error:	0.0 ft
Measured Depth (ft)	Vertical Depth (ft)	Measured Depth (ft)	Vertical Depth (ft)	Reference	Offset	Semi Major Axis	Highside Toolface (°)	Offset Wellbore Centre +N/-S (ft)	Offset Wellbore Centre +E/-W (ft)	Between Centres (ft)	Between Ellipses (ft)	Minimum Separation (ft)	Separation Factor	Warning
0.0	0.0	0.0	0.0	0.0	0.0	90.02	90.02	0.0	61.3	61.3				
100.0	100.0	100.0	100.0	0.1	0.1	90.02	90.02	0.0	61.3	61.3	61.1	0.22	272.703	
200.0	200.0	200.0	200.0	0.3	0.3	90.02	90.02	0.0	61.3	61.3	60.6	0.67	90.901	
300.0	300.0	300.0	300.0	0.6	0.6	90.02	90.02	0.0	61.3	61.3	60.2	1.12	54.541	
400.0	400.0	400.0	400.0	0.8	0.8	90.02	90.02	0.0	61.3	61.3	59.7	1.57	38.958	
500.0	500.0	500.0	500.0	1.0	1.0	90.02	90.02	0.0	61.3	61.3	59.3	2.02	30.300	
600.0	600.0	600.0	600.0	1.2	1.2	90.02	90.02	0.0	61.3	61.3	58.8	2.47	24.791	
700.0	700.0	700.0	700.0	1.5	1.5	90.02	90.02	0.0	61.3	61.3	58.4	2.92	20.977	
800.0	800.0	800.0	800.0	1.7	1.7	90.02	90.02	0.0	61.3	61.3	57.9	3.37	18.180	
900.0	900.0	900.0	900.0	1.9	1.9	90.02	90.02	0.0	61.3	61.3	57.5	3.82	16.041	
1,000.0	1,000.0	1,000.0	1,000.0	2.1	2.1	90.02	90.02	0.0	61.3	61.3	57.0	4.27	14.353 CC, ES	
1,100.0	1,100.0	1,100.0	1,100.0	2.4	2.4	113.65	113.65	0.0	61.3	62.0	57.3	4.72	13.135	
1,200.0	1,199.8	1,199.8	1,199.8	2.6	2.6	117.88	117.88	0.0	61.3	64.3	59.1	5.16	12.443	
1,300.0	1,299.5	1,299.5	1,299.5	2.8	2.8	124.22	124.22	0.0	61.3	68.8	63.2	5.61	12.255	
1,400.0	1,398.9	1,398.9	1,398.9	3.1	3.0	130.64	130.64	0.0	61.3	75.0	68.9	6.06	12.362	
1,500.0	1,498.4	1,498.4	1,498.4	3.3	3.3	136.02	136.02	0.0	61.3	82.0	75.4	6.52	12.573	
1,600.0	1,597.9	1,597.9	1,597.9	3.6	3.5	140.53	140.53	0.0	61.3	89.6	82.6	6.97	12.842	
1,700.0	1,697.4	1,697.4	1,697.4	3.8	3.7	144.31	144.31	0.0	61.3	97.6	90.2	7.43	13.141	
1,800.0	1,796.9	1,797.1	1,797.1	4.1	3.9	148.41	148.41	-1.3	60.2	106.0	98.1	7.86	13.484	
1,900.0	1,896.3	1,896.2	1,896.1	4.4	4.1	153.59	153.59	-5.2	57.0	114.8	106.5	8.26	13.897	
2,000.0	1,995.8	1,994.6	1,994.1	4.6	4.3	159.52	159.52	-11.7	51.6	124.9	116.2	8.67	14.404	
2,100.0	2,095.3	2,092.7	2,091.6	4.9	4.5	165.59	165.59	-20.1	44.6	136.7	127.6	9.09	15.036	
2,200.0	2,194.8	2,191.0	2,189.2	5.2	4.7	170.73	170.73	-28.7	37.5	149.9	140.4	9.53	15.732	
2,300.0	2,294.3	2,289.3	2,286.9	5.5	4.9	175.03	175.03	-37.3	30.4	164.1	154.1	9.97	16.452	
2,400.0	2,393.8	2,387.6	2,384.5	5.7	5.1	178.63	178.63	-45.9	23.3	179.0	168.6	10.43	17.170	
2,500.0	2,493.2	2,485.9	2,482.2	6.0	5.4	-178.32	-178.32	-54.5	16.1	194.6	183.7	10.89	17.872	
2,600.0	2,592.7	2,584.1	2,579.8	6.3	5.6	-175.73	-175.73	-63.2	9.0	210.6	199.2	11.35	18.550	
2,700.0	2,692.2	2,682.4	2,677.5	6.6	5.9	-173.51	-173.51	-71.8	1.9	227.0	215.1	11.82	19.199	
2,800.0	2,791.7	2,780.7	2,775.1	6.9	6.1	-171.58	-171.58	-80.4	-5.3	243.6	231.3	12.29	19.816	
2,900.0	2,891.2	2,879.0	2,872.8	7.1	6.4	-169.90	-169.90	-89.0	-12.4	260.5	247.8	12.77	20.402	
3,000.0	2,990.7	2,977.3	2,970.4	7.4	6.7	-168.43	-168.43	-97.6	-19.5	277.6	264.4	13.25	20.956	
3,100.0	3,090.1	3,075.6	3,068.1	7.7	6.9	-167.13	-167.13	-106.2	-26.6	294.9	281.1	13.73	21.480	
3,200.0	3,189.6	3,173.9	3,165.8	8.0	7.2	-165.97	-165.97	-114.8	-33.8	312.2	298.0	14.21	21.974	
3,300.0	3,289.1	3,272.2	3,263.4	8.3	7.5	-164.93	-164.93	-123.4	-40.9	329.7	315.0	14.69	22.442	
3,400.0	3,388.6	3,370.5	3,361.1	8.6	7.8	-164.00	-164.00	-132.0	-48.0	347.3	332.1	15.18	22.883	
3,500.0	3,488.1	3,468.8	3,458.7	8.8	8.0	-163.16	-163.16	-140.6	-55.1	365.0	349.3	15.66	23.301	
3,600.0	3,587.6	3,567.1	3,556.4	9.1	8.3	-162.39	-162.39	-149.2	-62.3	382.7	366.6	16.15	23.696	
3,700.0	3,687.0	3,665.4	3,654.0	9.4	8.6	-161.70	-161.70	-157.8	-69.4	400.5	383.9	16.64	24.070	
3,800.0	3,786.5	3,763.7	3,751.7	9.7	8.9	-161.06	-161.06	-166.4	-76.5	418.4	401.2	17.13	24.424	
3,900.0	3,886.0	3,861.9	3,849.3	10.0	9.2	-160.47	-160.47	-175.0	-83.6	436.3	418.6	17.62	24.760	
4,000.0	3,985.5	3,960.2	3,947.0	10.3	9.5	-159.93	-159.93	-183.6	-90.8	454.2	436.1	18.11	25.079	
4,100.0	4,085.0	4,058.5	4,044.6	10.6	9.8	-159.44	-159.44	-192.2	-97.9	472.2	453.6	18.60	25.382	
4,200.0	4,184.5	4,156.8	4,142.3	10.9	10.1	-158.97	-158.97	-200.8	-105.0	490.2	471.1	19.10	25.670	
4,300.0	4,283.9	4,255.1	4,240.0	11.1	10.4	-158.54	-158.54	-209.4	-112.2	508.2	488.6	19.59	25.944	
4,400.0	4,383.4	4,353.4	4,337.6	11.4	10.6	-158.14	-158.14	-218.0	-119.3	526.3	506.2	20.08	26.205	
4,500.0	4,482.9	4,451.7	4,435.3	11.7	10.9	-157.77	-157.77	-226.7	-126.4	544.3	523.8	20.58	26.454	
4,600.0	4,582.4	4,550.0	4,532.9	12.0	11.2	-157.42	-157.42	-235.3	-133.5	562.4	541.4	21.07	26.692	
4,700.0	4,681.9	4,648.3	4,630.6	12.3	11.5	-157.09	-157.09	-243.9	-140.7	580.6	559.0	21.57	26.919	
4,800.0	4,781.3	4,757.1	4,738.8	12.6	11.8	-156.80	-156.80	-252.8	-148.1	598.2	576.2	22.06	27.113	
4,900.0	4,880.8	4,875.6	4,856.9	12.9	12.1	-156.75	-156.75	-259.3	-153.4	613.0	590.5	22.55	27.183	
5,000.0	4,980.3	4,995.0	4,976.3	13.2	12.3	-156.99	-156.99	-261.9	-155.6	624.7	601.6	23.03	27.126	

CC - Min centre to center distance or convergent point, SF - min separation factor, ES - min ellipse separation

<b>Company:</b>	PETROLEUM DEVELOPMENT CORP Weld County CO	<b>Local Co-ordinate Reference:</b>	Well Maxey 24P-332
<b>Project:</b>	SEC.24-T5N-R65W	<b>TVD Reference:</b>	WELL @ 4650.0ft (Original Well Elev)
<b>Reference Site:</b>	Maxey 24Q-HZ Pad Sec.24-T5N-R65W	<b>MD Reference:</b>	WELL @ 4650.0ft (Original Well Elev)
<b>Site Error:</b>	0.0ft	<b>North Reference:</b>	True
<b>Reference Well:</b>	Maxey 24P-332	<b>Survey Calculation Method:</b>	Minimum Curvature
<b>Well Error:</b>	0.0ft	<b>Output errors are at</b>	2.00 sigma
<b>Reference Wellbore</b>	Wellbore #1	<b>Database:</b>	Landmark
<b>Reference Design:</b>	Plan #1 (03-07-13)	<b>Offset TVD Reference:</b>	Offset Datum

Offset Design Maxey 24Q-HZ Pad Sec.24-T5N-R65W - Maxey 24Q-302 - Wellbore #1 - Plan #1 (3-07-13)													Offset Site Error:	0.0 ft
Survey Program: 0-MWD													Offset Well Error:	0.0 ft
Measured Depth (ft)	Vertical Depth (ft)	Measured Depth (ft)	Vertical Depth (ft)	Reference	Offset	Highside Toolface (°)	Offset Wellbore Centre +N/-S (ft)	Offset Wellbore Centre +E/-W (ft)	Between Centres (ft)	Between Ellipses (ft)	Minimum Separation (ft)	Separation Factor	Warning	
5,100.0	5,079.8	5,098.5	5,079.8	13.5	12.5	-157.36	-262.0	-155.7	634.1	610.6	23.47	27.018		
5,200.0	5,179.3	5,198.0	5,179.3	13.7	12.7	-157.71	-262.0	-155.7	643.5	619.6	23.90	26.919		
5,300.0	5,278.8	5,297.5	5,278.8	14.0	12.8	-158.06	-262.0	-155.7	652.1	627.8	24.35	26.782		
5,400.0	5,378.7	5,397.3	5,378.7	14.2	13.0	-158.30	-262.0	-155.7	657.7	632.9	24.74	26.581		
5,500.0	5,478.6	5,497.3	5,478.6	14.4	13.2	-158.40	-262.0	-155.7	660.0	634.9	25.11	26.287		
5,600.0	5,578.6	5,597.3	5,578.6	14.5	13.4	179.45	-262.0	-155.7	660.1	633.1	27.00	24.448		
5,700.0	5,678.6	5,697.3	5,678.6	14.7	13.5	179.45	-262.0	-155.7	660.1	632.7	27.38	24.110		
5,800.0	5,778.6	5,797.3	5,778.6	14.9	13.7	179.45	-262.0	-155.7	660.1	632.3	27.76	23.780		
5,900.0	5,878.6	5,897.3	5,878.6	15.1	13.9	179.45	-262.0	-155.7	660.1	631.9	28.14	23.458		
6,000.0	5,978.6	5,997.3	5,978.6	15.3	14.1	179.45	-262.0	-155.7	660.1	631.5	28.52	23.142		
6,100.0	6,078.6	6,097.2	6,078.5	15.5	14.3	89.14	-262.0	-155.6	660.1	632.5	27.53	23.977		
6,200.0	6,178.2	6,195.9	6,176.9	15.6	14.4	89.15	-262.1	-148.1	660.0	632.2	27.84	23.708		
6,300.0	6,276.0	6,294.7	6,273.5	15.7	14.5	89.17	-262.2	-127.9	660.0	632.0	28.08	23.505		
6,400.0	6,370.2	6,393.5	6,366.7	15.8	14.6	89.20	-262.3	-95.4	660.0	631.7	28.29	23.328		
6,500.0	6,459.3	6,492.3	6,455.0	15.9	14.6	89.25	-262.6	-51.1	660.0	631.5	28.56	23.111		
6,600.0	6,541.7	6,591.3	6,536.9	16.0	14.7	89.32	-262.9	4.2	660.0	631.0	28.99	22.764		
6,700.0	6,616.1	6,690.3	6,611.1	16.1	14.8	89.39	-263.2	69.7	660.0	630.2	29.74	22.188		
6,800.0	6,681.0	6,789.5	6,676.2	16.3	15.0	89.47	-263.6	144.4	660.0	629.0	30.97	21.312		
6,900.0	6,735.5	6,888.7	6,731.2	17.2	15.9	89.56	-264.1	227.0	660.0	627.2	32.78	20.131		
7,000.0	6,778.7	6,988.2	6,775.1	18.4	17.2	89.66	-264.5	316.1	659.9	624.7	35.25	18.722		
7,100.0	6,809.6	7,087.7	6,807.1	19.9	18.7	89.77	-265.0	410.3	659.9	621.6	38.34	17.213		
7,200.0	6,827.9	7,187.5	6,826.6	21.8	20.5	89.88	-265.6	508.1	659.9	617.9	41.95	15.729		
7,300.0	6,833.3	7,287.4	6,833.2	23.7	22.5	89.99	-266.1	607.7	659.9	613.9	45.95	14.361		
7,400.0	6,831.7	7,387.4	6,831.7	25.9	24.7	90.00	-266.6	707.6	659.9	609.6	50.23	13.137		
7,500.0	6,830.1	7,487.4	6,830.1	28.1	26.9	90.00	-267.2	807.6	659.9	605.1	54.75	12.053		
7,600.0	6,828.5	7,587.4	6,828.5	30.5	29.3	90.00	-267.7	907.6	659.9	600.4	59.45	11.099		
7,700.0	6,826.9	7,687.4	6,826.9	32.9	31.7	90.00	-268.2	1,007.6	659.8	595.5	64.31	10.261		
7,800.0	6,825.3	7,787.4	6,825.3	35.3	34.2	90.00	-268.8	1,107.6	659.8	590.6	69.27	9.525		
7,900.0	6,823.7	7,887.4	6,823.8	37.8	36.7	90.00	-269.3	1,207.6	659.8	585.5	74.33	8.876		
8,000.0	6,822.1	7,987.4	6,822.2	40.4	39.3	90.00	-269.8	1,307.6	659.8	580.3	79.47	8.303		
8,100.0	6,820.6	8,087.4	6,820.6	43.0	41.9	90.00	-270.4	1,407.5	659.8	575.1	84.67	7.793		
8,200.0	6,819.0	8,187.4	6,819.0	45.6	44.5	90.00	-270.9	1,507.5	659.8	569.9	89.91	7.338		
8,300.0	6,817.4	8,287.4	6,817.4	48.2	47.2	90.00	-271.4	1,607.5	659.8	564.6	95.20	6.930		
8,400.0	6,815.8	8,387.4	6,815.8	50.9	49.8	90.00	-272.0	1,707.5	659.8	559.2	100.53	6.563		
8,500.0	6,814.2	8,487.4	6,814.2	53.5	52.5	90.00	-272.5	1,807.5	659.7	553.9	105.88	6.231		
8,600.0	6,812.6	8,587.4	6,812.6	56.2	55.2	90.00	-273.0	1,907.5	659.7	548.5	111.26	5.929		
8,700.0	6,811.0	8,687.4	6,811.0	58.9	57.9	90.00	-273.6	2,007.5	659.7	543.1	116.67	5.655		
8,800.0	6,809.4	8,787.4	6,809.5	61.6	60.6	90.00	-274.1	2,107.4	659.7	537.6	122.09	5.404		
8,900.0	6,807.9	8,887.4	6,807.9	64.3	63.4	90.00	-274.6	2,207.4	659.7	532.2	127.53	5.173		
9,000.0	6,806.3	8,987.4	6,806.3	67.1	66.1	90.00	-275.2	2,307.4	659.7	526.7	132.98	4.961		
9,100.0	6,804.7	9,087.4	6,804.7	69.8	68.8	90.00	-275.7	2,407.4	659.7	521.2	138.45	4.765		
9,200.0	6,803.1	9,187.4	6,803.1	72.5	71.6	90.00	-276.2	2,507.4	659.7	515.7	143.93	4.583		
9,300.0	6,801.5	9,287.4	6,801.5	75.3	74.3	90.00	-276.8	2,607.4	659.7	510.2	149.42	4.415		
9,400.0	6,799.9	9,387.4	6,799.9	78.0	77.1	90.00	-277.3	2,707.4	659.6	504.7	154.92	4.258		
9,500.0	6,798.3	9,487.4	6,798.3	80.7	79.8	90.00	-277.8	2,807.3	659.6	499.2	160.42	4.112		
9,600.0	6,796.7	9,587.4	6,796.8	83.5	82.6	90.00	-278.4	2,907.3	659.6	493.7	165.94	3.975		
9,700.0	6,795.2	9,687.4	6,795.2	86.3	85.3	90.00	-278.9	3,007.3	659.6	488.1	171.46	3.847		
9,800.0	6,793.6	9,787.4	6,793.6	89.0	88.1	90.00	-279.4	3,107.3	659.6	482.6	176.98	3.727		
9,900.0	6,792.0	9,887.4	6,792.0	91.8	90.9	90.00	-280.0	3,207.3	659.6	477.1	182.51	3.614		
10,000.0	6,790.4	9,987.4	6,790.4	94.5	93.6	90.00	-280.5	3,307.3	659.6	471.5	188.05	3.507		
10,100.0	6,788.8	10,087.4	6,788.8	97.3	96.4	90.00	-281.0	3,407.3	659.6	466.0	193.59	3.407		

CC - Min centre to center distance or convergent point, SF - min separation factor, ES - min ellipse separation

<b>Company:</b>	PETROLEUM DEVELOPMENT CORP Weld County CO	<b>Local Co-ordinate Reference:</b>	Well Maxey 24P-332
<b>Project:</b>	SEC.24-T5N-R65W	<b>TVD Reference:</b>	WELL @ 4650.0ft (Original Well Elev)
<b>Reference Site:</b>	Maxey 24Q-HZ Pad Sec.24-T5N-R65W	<b>MD Reference:</b>	WELL @ 4650.0ft (Original Well Elev)
<b>Site Error:</b>	0.0ft	<b>North Reference:</b>	True
<b>Reference Well:</b>	Maxey 24P-332	<b>Survey Calculation Method:</b>	Minimum Curvature
<b>Well Error:</b>	0.0ft	<b>Output errors are at</b>	2.00 sigma
<b>Reference Wellbore</b>	Wellbore #1	<b>Database:</b>	Landmark
<b>Reference Design:</b>	Plan #1 (03-07-13)	<b>Offset TVD Reference:</b>	Offset Datum

Offset Design												Maxey 24Q-HZ Pad Sec.24-T5N-R65W - Maxey 24Q-302 - Wellbore #1 - Plan #1 (3-07-13)		Offset Site Error:		0.0 ft
Survey Program: 0-MWD														Offset Well Error:		0.0 ft
Reference		Offset		Semi Major Axis			Distance							Warning		
Measured Depth	Vertical Depth	Measured Depth	Vertical Depth	Reference	Offset	Highside Toolface	Offset Wellbore Centre		Between Centres	Between Ellipses	Minimum Separation	Separation Factor				
(ft)	(ft)	(ft)	(ft)	(ft)	(ft)	(°)	+N/-S (ft)	+E/-W (ft)	(ft)	(ft)	(ft)					
10,200.0	6,787.2	10,187.4	6,787.2	100.1	99.2	90.00	-281.6	3,507.2	659.5	460.4	199.14	3.312				
10,300.0	6,785.6	10,287.4	6,785.6	102.8	101.9	90.00	-282.1	3,607.2	659.5	454.8	204.69	3.222				
10,400.0	6,784.0	10,387.4	6,784.0	105.6	104.7	90.00	-282.7	3,707.2	659.5	449.3	210.24	3.137				
10,500.0	6,782.4	10,487.4	6,782.5	108.4	107.5	90.00	-283.2	3,807.2	659.5	443.7	215.80	3.056				
10,600.0	6,780.9	10,587.4	6,780.9	111.2	110.3	90.00	-283.7	3,907.2	659.5	438.1	221.36	2.979				
10,700.0	6,779.3	10,687.4	6,779.3	113.9	113.1	90.00	-284.3	4,007.2	659.5	432.6	226.92	2.906				
10,800.0	6,777.7	10,787.4	6,777.7	116.7	115.9	90.00	-284.8	4,107.2	659.5	427.0	232.49	2.837				
10,900.0	6,776.1	10,887.4	6,776.1	119.5	118.6	90.00	-285.3	4,207.2	659.5	421.4	238.05	2.770				
11,000.0	6,774.5	10,987.4	6,774.5	122.3	121.4	90.00	-285.9	4,307.1	659.5	415.8	243.62	2.707				
11,100.0	6,772.9	11,087.4	6,772.9	125.1	124.2	90.00	-286.4	4,407.1	659.4	410.2	249.20	2.646				
11,200.0	6,771.3	11,187.4	6,771.3	127.9	127.0	90.00	-286.9	4,507.1	659.4	404.7	254.77	2.588				
11,283.6	6,770.0	11,271.0	6,770.0	130.2	129.3	90.00	-287.4	4,590.7	659.4	400.0	259.43	2.542 SF				



<b>Company:</b>	PETROLEUM DEVELOPMENT CORP Weld County CO	<b>Local Co-ordinate Reference:</b>	Well Maxey 24P-332
<b>Project:</b>	SEC.24-T5N-R65W	<b>TVD Reference:</b>	WELL @ 4650.0ft (Original Well Elev)
<b>Reference Site:</b>	Maxey 24Q-HZ Pad Sec.24-T5N-R65W	<b>MD Reference:</b>	WELL @ 4650.0ft (Original Well Elev)
<b>Site Error:</b>	0.0ft	<b>North Reference:</b>	True
<b>Reference Well:</b>	Maxey 24P-332	<b>Survey Calculation Method:</b>	Minimum Curvature
<b>Well Error:</b>	0.0ft	<b>Output errors are at</b>	2.00 sigma
<b>Reference Wellbore</b>	Wellbore #1	<b>Database:</b>	Landmark
<b>Reference Design:</b>	Plan #1 (03-07-13)	<b>Offset TVD Reference:</b>	Offset Datum

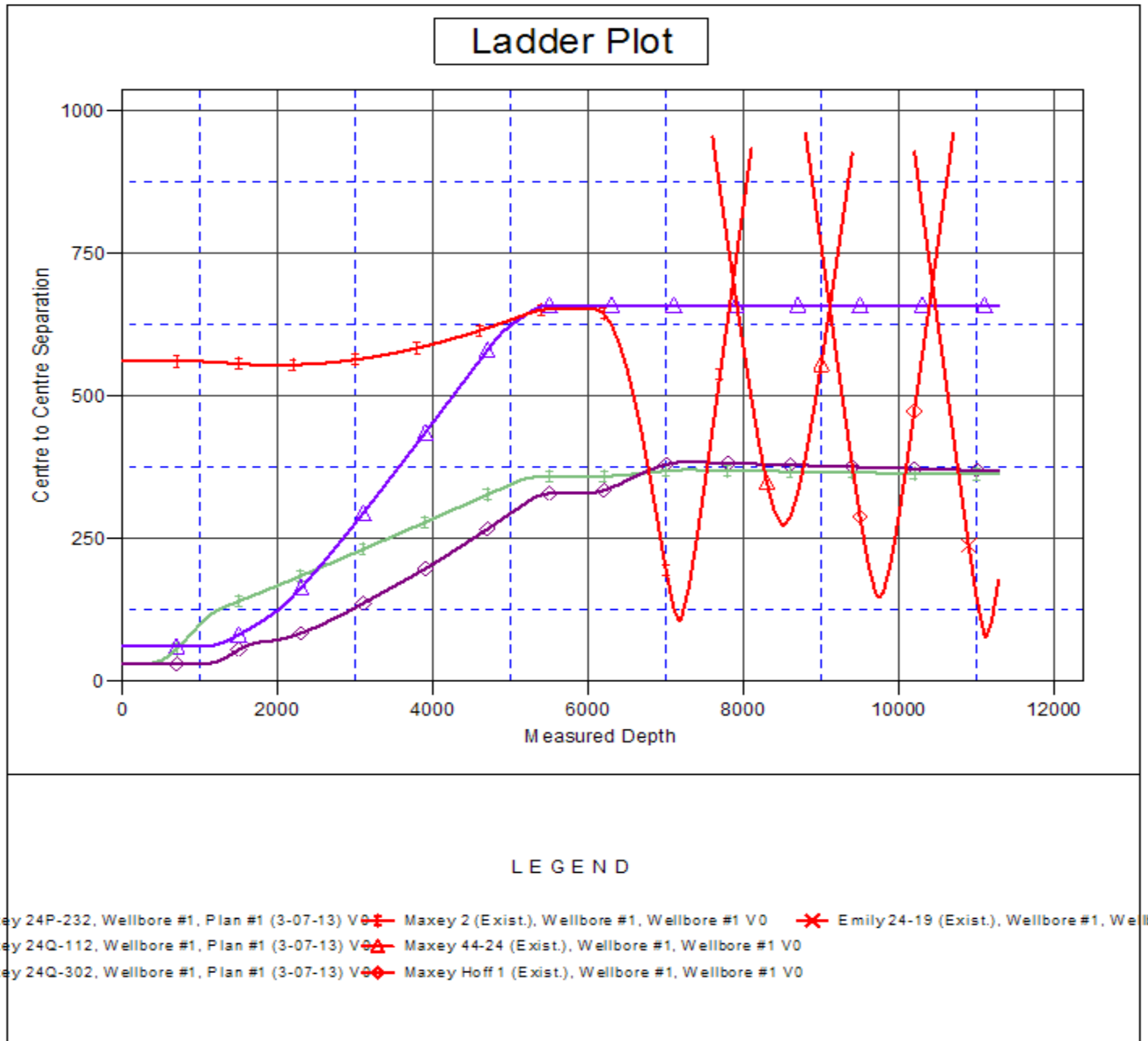
<b>Offset Design</b> Maxey 24Q-HZ Pad Sec.24-T5N-R65W - Maxey 44-24 (Exist.) - Wellbore #1 - Wellbore #1												<b>Offset Site Error:</b>	0.0 ft
Survey Program: 7300-MWD												<b>Offset Well Error:</b>	0.0 ft
Reference		Offset		Semi Major Axis		Highside Toolface (°)	Distance		Between Centres (ft)	Between Ellipses (ft)	Minimum Separation (ft)	Separation Factor	Warning
Measured Depth (ft)	Vertical Depth (ft)	Measured Depth (ft)	Vertical Depth (ft)	Reference (ft)	Offset (ft)		Offset Wellbore Centre +N/-S (ft)	+E/-W (ft)					
7,600.0	6,828.5	6,810.5	6,810.5	30.5	7.7	93.04	113.0	1,824.9	955.4	917.5	37.92	25.197	
7,700.0	6,826.9	6,808.9	6,808.9	32.9	7.7	92.70	113.0	1,824.9	860.1	819.8	40.33	21.325	
7,800.0	6,825.3	6,807.3	6,807.3	35.3	7.7	92.37	113.0	1,824.9	766.0	723.2	42.81	17.894	
7,900.0	6,823.7	6,805.7	6,805.7	37.8	7.6	92.04	113.0	1,824.9	673.6	628.3	45.33	14.860	
8,000.0	6,822.1	6,804.1	6,804.1	40.4	7.6	91.71	113.0	1,824.9	583.7	535.8	47.89	12.189	
8,100.0	6,820.6	6,802.6	6,802.6	43.0	7.6	91.38	113.0	1,824.9	497.6	447.2	50.48	9.859	
8,200.0	6,819.0	6,801.0	6,801.0	45.6	7.6	91.05	113.0	1,824.9	417.8	364.8	53.09	7.870	
8,300.0	6,817.4	6,799.4	6,799.4	48.2	7.6	90.71	113.0	1,824.9	348.6	292.9	55.73	6.256	
8,400.0	6,815.8	6,797.8	6,797.8	50.9	7.6	90.38	113.0	1,824.9	297.4	239.0	58.38	5.095	
8,500.0	6,814.2	6,796.2	6,796.2	53.5	7.6	90.05	113.0	1,824.9	274.6	213.5	61.05	4.498	
8,515.4	6,814.0	6,796.0	6,796.0	54.0	7.6	90.00	113.0	1,824.9	274.1	212.7	61.46	4.461	CC, ES, SF
8,600.0	6,812.6	6,794.6	6,794.6	56.2	7.6	89.72	113.0	1,824.9	286.9	223.2	63.72	4.502	
8,700.0	6,811.0	6,793.0	6,793.0	58.9	7.6	89.39	113.0	1,824.9	330.5	264.1	66.41	4.977	
8,800.0	6,809.4	6,791.4	6,791.4	61.6	7.6	89.06	113.0	1,824.9	395.1	326.0	69.11	5.718	
8,900.0	6,807.9	6,789.9	6,789.9	64.3	7.6	88.72	113.0	1,824.9	472.3	400.5	71.81	6.577	
9,000.0	6,806.3	6,788.3	6,788.3	67.1	7.6	88.39	113.0	1,824.9	556.7	482.2	74.51	7.472	
9,100.0	6,804.7	6,786.7	6,786.7	69.8	7.6	88.06	113.0	1,824.9	645.6	568.4	77.22	8.361	
9,200.0	6,803.1	6,785.1	6,785.1	72.5	7.6	87.73	113.0	1,824.9	737.4	657.4	79.94	9.225	
9,300.0	6,801.5	6,783.5	6,783.5	75.3	7.6	87.40	113.0	1,824.9	831.0	748.4	82.65	10.055	
9,400.0	6,799.9	6,781.9	6,781.9	78.0	7.6	87.07	113.0	1,824.9	926.0	840.6	85.37	10.847	

<b>Company:</b>	PETROLEUM DEVELOPMENT CORP Weld County CO	<b>Local Co-ordinate Reference:</b>	Well Maxey 24P-332
<b>Project:</b>	SEC.24-T5N-R65W	<b>TVD Reference:</b>	WELL @ 4650.0ft (Original Well Elev)
<b>Reference Site:</b>	Maxey 24Q-HZ Pad Sec.24-T5N-R65W	<b>MD Reference:</b>	WELL @ 4650.0ft (Original Well Elev)
<b>Site Error:</b>	0.0ft	<b>North Reference:</b>	True
<b>Reference Well:</b>	Maxey 24P-332	<b>Survey Calculation Method:</b>	Minimum Curvature
<b>Well Error:</b>	0.0ft	<b>Output errors are at</b>	2.00 sigma
<b>Reference Wellbore</b>	Wellbore #1	<b>Database:</b>	Landmark
<b>Reference Design:</b>	Plan #1 (03-07-13)	<b>Offset TVD Reference:</b>	Offset Datum

<b>Offset Design</b> Maxey 24Q-HZ Pad Sec.24-T5N-R65W - Maxey Hoff 1 (Exist.) - Wellbore #1 - Wellbore #1												<b>Offset Site Error:</b>	0.0 ft
<b>Survey Program:</b> 7300-MWD												<b>Offset Well Error:</b>	0.0 ft
Reference		Offset		Semi Major Axis		Distance							
Measured Depth (ft)	Vertical Depth (ft)	Measured Depth (ft)	Vertical Depth (ft)	Reference (ft)	Offset (ft)	Highside Toolface (°)	Offset Wellbore Centre +N/-S (ft)	+E/-W (ft)	Between Centres (ft)	Between Ellipses (ft)	Minimum Separation (ft)	Separation Factor	Warning
8,800.0	6,809.4	6,790.4	6,790.4	61.6	7.6	95.85	233.4	3,059.1	960.3	891.3	68.95	13.927	
8,900.0	6,807.9	6,788.9	6,788.9	64.3	7.6	95.24	233.4	3,059.1	861.6	789.9	71.70	12.017	
9,000.0	6,806.3	6,787.3	6,787.3	67.1	7.6	94.62	233.4	3,059.1	763.3	688.8	74.46	10.251	
9,100.0	6,804.7	6,785.7	6,785.7	69.8	7.6	94.01	233.4	3,059.1	665.5	588.2	77.22	8.618	
9,200.0	6,803.1	6,784.1	6,784.1	72.5	7.6	93.39	233.4	3,059.1	568.4	488.4	79.98	7.106	
9,300.0	6,801.5	6,782.5	6,782.5	75.3	7.6	92.78	233.4	3,059.1	472.5	389.8	82.75	5.710	
9,400.0	6,799.9	6,780.9	6,780.9	78.0	7.6	92.16	233.4	3,059.1	378.8	293.3	85.51	4.429	
9,500.0	6,798.3	6,779.3	6,779.3	80.7	7.6	91.54	233.4	3,059.1	289.2	201.0	88.27	3.277	
9,600.0	6,796.7	6,777.7	6,777.7	83.5	7.6	90.92	233.4	3,059.1	209.4	118.4	91.03	2.300	
9,700.0	6,795.2	6,776.2	6,776.2	86.3	7.6	90.30	233.4	3,059.1	155.0	61.3	93.78	1.653	
9,749.1	6,794.4	6,775.4	6,775.4	87.6	7.6	90.00	233.4	3,059.1	147.1	51.9	95.13	1.546 CC, ES, SF	
9,800.0	6,793.6	6,774.6	6,774.6	89.0	7.6	89.69	233.4	3,059.1	155.6	59.1	96.53	1.612	
9,900.0	6,792.0	6,773.0	6,773.0	91.8	7.6	89.07	233.4	3,059.1	210.7	111.4	99.27	2.123	
10,000.0	6,790.4	6,771.4	6,771.4	94.5	7.6	88.45	233.4	3,059.1	290.8	188.8	102.00	2.851	
10,100.0	6,788.8	6,769.8	6,769.8	97.3	7.6	87.83	233.4	3,059.1	380.4	275.7	104.72	3.633	
10,200.0	6,787.2	6,768.2	6,768.2	100.1	7.6	87.21	233.4	3,059.1	474.2	366.8	107.44	4.414	
10,300.0	6,785.6	6,766.6	6,766.6	102.8	7.6	86.60	233.4	3,059.1	570.1	460.0	110.14	5.177	
10,400.0	6,784.0	6,765.0	6,765.0	105.6	7.6	85.98	233.4	3,059.1	667.2	554.4	112.83	5.914	
10,500.0	6,782.4	6,763.4	6,763.4	108.4	7.6	85.36	233.4	3,059.1	765.1	649.6	115.50	6.624	
10,600.0	6,780.9	6,761.9	6,761.9	111.2	7.6	84.75	233.4	3,059.1	863.4	745.3	118.16	7.307	
10,700.0	6,779.3	6,760.3	6,760.3	113.9	7.6	84.14	233.4	3,059.1	962.1	841.3	120.81	7.964	

<b>Company:</b>	PETROLEUM DEVELOPMENT CORP Weld County CO	<b>Local Co-ordinate Reference:</b>	Well Maxey 24P-332
<b>Project:</b>	SEC.24-T5N-R65W	<b>TVD Reference:</b>	WELL @ 4650.0ft (Original Well Elev)
<b>Reference Site:</b>	Maxey 24Q-HZ Pad Sec.24-T5N-R65W	<b>MD Reference:</b>	WELL @ 4650.0ft (Original Well Elev)
<b>Site Error:</b>	0.0ft	<b>North Reference:</b>	True
<b>Reference Well:</b>	Maxey 24P-332	<b>Survey Calculation Method:</b>	Minimum Curvature
<b>Well Error:</b>	0.0ft	<b>Output errors are at</b>	2.00 sigma
<b>Reference Wellbore</b>	Wellbore #1	<b>Database:</b>	Landmark
<b>Reference Design:</b>	Plan #1 (03-07-13)	<b>Offset TVD Reference:</b>	Offset Datum

Reference Depths are relative to WELL @ 4650.0ft (Original Well Elev) Coordinates are relative to: Maxey 24P-332  
Offset Depths are relative to Offset Datum  
Central Meridian is -105.500000 °  
Coordinate System is US State Plane 1983, Colorado Northern Zone  
Grid Convergence at Surface is: 0.57°



<b>Company:</b>	PETROLEUM DEVELOPMENT CORP Weld County CO	<b>Local Co-ordinate Reference:</b>	Well Maxey 24P-332
<b>Project:</b>	SEC.24-T5N-R65W	<b>TVD Reference:</b>	WELL @ 4650.0ft (Original Well Elev)
<b>Reference Site:</b>	Maxey 24Q-HZ Pad Sec.24-T5N-R65W	<b>MD Reference:</b>	WELL @ 4650.0ft (Original Well Elev)
<b>Site Error:</b>	0.0ft	<b>North Reference:</b>	True
<b>Reference Well:</b>	Maxey 24P-332	<b>Survey Calculation Method:</b>	Minimum Curvature
<b>Well Error:</b>	0.0ft	<b>Output errors are at</b>	2.00 sigma
<b>Reference Wellbore</b>	Wellbore #1	<b>Database:</b>	Landmark
<b>Reference Design:</b>	Plan #1 (03-07-13)	<b>Offset TVD Reference:</b>	Offset Datum

Reference Depths are relative to WELL @ 4650.0ft (Original Well Elev) Coordinates are relative to: Maxey 24P-332  
 Offset Depths are relative to Offset Datum  
 Central Meridian is -105.500000 °  
 Coordinate System is US State Plane 1983, Colorado Northern Zone  
 Grid Convergence at Surface is: 0.57°

